

7



Section 7 Security Racks, Consoles and Enclosures

Middle Atlantic 7.2–7.16

Hoffman 7.17–7.22

Winsted 7.23–7.24

Rack Systems Secure Your Equipment

Physical Support & Protection



EQUIPMENT ENCLOSURES

Full range of wall mount and floor mount cabinets are engineered for strength, equipment access, and cooling. Seismic-certified models are available for critical applications.

Command & Control Systems



SECURITY CONSOLE SYSTEMS

Attractive new designs feature fully welded construction and provide a full range of ergonomic, cooling, access, and cable management advantages.

Middle Atlantic equipment mounting solutions provide the strong foundation you need to ensure effective reliability and performance for your security systems. All our products are designed to seamlessly work together to provide an integrated support system including physical protection, cooling, power distribution, and cable management. Whether the job is a small surveillance station or a large scale command and control environment, Middle Atlantic Products can help make sure your installed system performs as designed.

Trust Middle Atlantic to help you install your best performing, most reliable systems.

Call us for details 800-266-7225 | www.middleatlantic.com

EXCEPTIONAL SUPPORT & PROTECTION™


Middle Atlantic Products

Security Racks, Consoles and Enclosures

Middle Atlantic

ViewPoint Technical Furniture

MIDDLE ATLANTIC PRODUCTS



Serious furniture for mission-critical installations.

FEATURES

- Modular design allows economical additions and limitless configuration choices
- Consoles are optimized for flexible flat screen arrangements and ergonomically designed with the user in mind
- Fully welded bays provide a heavy-duty structure that can be assembled quickly
- Available with an 18 in. deep work surface or 34 in. desktop
- A large variety of standard finishes available
- Most configurations ship in three weeks or less
- Custom finishes and work surfaces available upon request
- UL Listed in the U.S. and Canada
- GREENGUARD IAQ certified
- LCD monitors can be mounted using optional monitor arms
- Ergonomically designed professional use operator chair available

Call Middle Atlantic for Free Designer layout software for console designs.

LCD Monitoring Desk System

MIDDLE ATLANTIC PRODUCTS



Versatile, configurable monitoring desk system provides more useable space in a smaller footprint and is optimized for use with LCD screens. Satisfying the need for optimized technical furniture, the highly-modular LCD Monitoring Desk System is equally suited for single-desk surveillance applications or larger-scale command and control environments.

For additional LCD Monitoring Consoles or accessories, please contact your local sales location.

Anixter No.	Vendor No.	Description
275169	LD-L48	Light bridge for 48 in. desk
275170	LD-L64	Light bridge for 64 in. desk
275220	LD-M2X1	Monitor mount, 2 monitors, 2 across
275222	LD-M2X2	Monitor mount, 4 monitors, 2 across, 2 levels

Anixter No.	Vendor No.	Description
275221	LD-M3X1	Monitor mount, 3 monitors, 3 across
275225	D-PT20	Pencil tray, 20 in. wide, mounts under desk
369796	LD-4830	48 in. wide LCD desk, specify color*
369799	LD-6430	64 in. wide LCD desk, specify color*
369802	LD-SP30	Pair of half height side panels for LCD desks, specify color*
369807	LD-PSP30	Pair of full height side panels for LCD desks, specify color*
369901	LD-M3X2	Monitor mount, 6 monitors 3 across, 2 levels

*Add -DC for Dark Cherry, -HM for Honey Maple, -PS for Pepperstone or -SL for Slate (available for side panels only) at the end of the vendor number for color.

Quiet-Cool Series Monitoring Consoles

MIDDLE ATLANTIC PRODUCTS



The modular design of Quiet-Cool Series and Convective Series consoles allow for limitless configurations. The combinations of base modules, top tiers, corner wedges and writing surface option allows designs that can match any requirements, and assemble in 1/3 of the time of knock-down consoles. Whether the system requires active cooling, or natural convective cooling, it is easy to select the configuration that will meet the needs of each project.

Console configuration can be ordered quickly and easily with a single part number. When passive cooling is need, select Convective Series configurations, or choose the Quiet-Cool Series for systems requiring active cooling. Each configuration includes the same features and benefits that are an integral part of Middle Atlantic's consoles.

FEATURES

- Welded design ships fully assembled to minimize installation time
- 14-gauge construction provides a robust 1,500 lb. weight capacity
- Space saving 22 in. width, 27 in. deep
- Optional sliding rotating rack bay available
- Convective Series Consoles are Seismic Certified (UBC and CBC Zone 4 and IBC, ASCE and FPA Seismic use Group III) for protecting 375 lb. of equipment when used with SC-Z4 brackets
- Granite gray color standard, black and light gray also available standard
- UL Listed in the U.S. and Canada
- Each configuration comes complete with:
 - Locking solid front door on each bay
 - 25 rack screws per bay
 - Ganging hardware
 - 15 amp power distribution

Middle Atlantic

Anixter No.	Vendor No.	Description
327166	SCQ-4	3 bay convective console configuration package with wedges
369772	SC-2	2 bay straight convective console configuration package
369774	SCQ-2	2 bay straight Quiet-Cool console configuration package
369775	SC-3	3 bay straight convective console package
369776	SCQ-3	3 bay straight Quiet-Cool console configuration package
369777	SC-4	4 bay straight convective console package
369781	SC-3W2	3 bay convective console configuration package with wedges
369783	SCQ-3W2	3 bay Quiet-Cool console configuration package with wedges
369785	SC-4W2	4 bay convective console configuration package with wedges
369789	SCQ-4W2	4 bay Quiet-Cool console configuration package with wedges
369791	SC-5W2-53T	5 bay convective console configuration package with wedges and third tiers
369793	SCQ-5W2-53T	5 bay Quiet-Cool console configuration package with wedges and third tiers

Pivoting Panel Mount

MIDDLE ATLANTIC PRODUCTS



Wall-mount racks provide easy rear access.

FEATURES

- Unique design allows punching down while fully open
- Available in three depths: 6 in., 12 in. and 18 in.
- Abundant internal tie points for cable management
- Includes Velcro cable loops

Anixter No.	Vendor No.	Description
240825	PPM-2	3 1/2 in. (2 space)
231155	PPM-4	7 in. (4 space)
231159	PPM-6	10 1/2 in. (6 space)
231167	PPM-6-12	10 1/2 in. (6 space), 12 in. deep
231168	PPM-8-12	14 in. (8 space), 12 in. deep
231169	PPM-8-18	14 in. (8 space), 18 in. deep

WRS Series 19 in. Low-profile Wall-mount Rack

MIDDLE ATLANTIC PRODUCTS



The WRP/WRS Series low-profile wall cabinets allow mounting of equipment in a vertical "knobs-up" fashion for space efficiency and aesthetics. With adjustable rackrail providing 20 in. to 23 in. of useable racking depth, the innovative design features a vented bottom, two bottom located fan mounting positions with grills (fans not included), and the angled top cover (hinged plexiglass for the WRP and solid steel for the WRS) allows convenient equipment access, and is keyed separately from the body keylock to provide user access to front equipment controls while limiting access to connections in the rear of the equipment.

FEATURES

- Low-profile design
- Available in black or putty colors
- UL Listed in the U.S. and Canada

Anixter No.	Vendor No.	Description
275132	WRS-4	7 in. racking height (4 space), 23 in. deep, black color, solid steel top cover
231269	WRS-6	10 1/2 in. racking height (6 space), 23 in. deep, black color, solid steel top cover
231272	WRS-8	14 in. racking height (8 space), 23 in. deep, black color, solid steel top cover
231265	WRP-6	10 1/2 in. racking height (6 space), 23 in. deep, putty color, plexiglass top cover
268474	WRP-8	14 in. racking height (8 space), 23 in. deep, putty color, plexiglass top cover
231266	WRP-4	7 in. racking height (4 space), 23 in. deep, putty color plexiglass top cover
236158	WRP-4	7 in. racking height (4 space), 23 in. deep, putty color plexiglass top cover

Security Racks, Consoles and Enclosures

Middle Atlantic

Adjustable Depth Hinged Panel-mount Rack

MIDDLE ATLANTIC PRODUCTS



Economical hinged wall mount provides easy rear access to rack-mount components.

FEATURES

- One side hinged at two points for easy rear access
- Simple adjustable depth accommodates components from 9 in. to 15 in.
- Available in four, six or eight rack space models
- Built-in cable management
- Includes four 10-32 rack screws
- Grounding stud built-in
- Space indicators marked on rackrail

Anixter No.	Vendor No.	Description
421695	HPM-4-915	Four rack space, adjustable depth 9 in. to 15 in.
421696	HPM-6-915	Six rack space, adjustable depth 9 in. to 15 in.
421693	HPM-8-915	Eight rack space, adjustable depth 9 in. to 15 in.

Vertical Panel Wall Mount

MIDDLE ATLANTIC PRODUCTS



Cost-effective, versatile solution to wall-mount racking.

FEATURES

- Can accommodate all depths of equipment
- Mounts horizontally or vertically allowing versatile component placement
- Heavy-duty threaded rackrail
- Available in two, three or four rack space models

Anixter No.	Vendor No.	Description
421697	VPM-2	Two rack space, vertical panel mount
421698	VPM-3	Three rack space, vertical panel mount
421699	VPM-4	Four rack space, vertical panel mount

DWR Series Sectional Wall Racks

MIDDLE ATLANTIC PRODUCTS



Specify a DWR wall cabinet when floor space is an issue. This pivoting, sectional wall cabinet is ideal for larger systems in both secure and non-secured areas. Equipped with fully-adjustable 11-gauge, 10-32 threaded rackrail and advanced cable management systems, Middle Atlantic's DWR series welded sectional wall racks feature 16-gauge steel construction and are offered in depths of 17 in., 22 in., 26 in. and 32 in.

FEATURES

- Sectional wall rack
- Finished in durable black powder coat
- New tool-free Quick-Mount system for easy, one-person mounting of the center section to the backpan on the job site
- Up to 300 lb. capacity depending on model
- Superior natural ventilation with additional cooling available with optional fans
- Abundant built-in cable lacing points in interior
- UL Listed in the U.S. and Canada
- Accepts the new zero clearance latch which allows mounting side-by-side or in a corner
- Available in granite gray

17 IN. DEPTH (15 IN. USEABLE)

Anixter No.	Vendor No.	Description
240830	DWR-35-17	68 5/16 in. high, 35 rack space, 300 lb. weight capacity
240827	DWR-24-17	49 1/16 in. high, 24 rack space, 300 lb. weight capacity
275120	DWR-24-17PD	49 1/16 in. high, 24 rack space, 300 lb. weight capacity, includes plexiglass door
240828	DWR-21-17	43 3/16 in. high, 21 rack space, 250 lb. weight capacity
275121	DWR-21-17PD	43 13/16 in. high, 21 rack space, 250 lb. weight capacity, includes plexiglass door
240829	DWR-18-17	38 9/16 in. high, 18 rack space, 250 lb. weight capacity
240835	DWR-16-17	35 1/16 in. high, 16 rack space, 200 lb. weight capacity
275122	DWR-16-17PD	35 1/16 in. high, 16 rack space, 200 lb. weight capacity, includes plexiglass door
240836	DWR-12-17	28 1/16 in. high, 12 rack space, 200 lb. weight capacity
231165	DWR-10-17	17 1/2 in. high, 10 rack space, 200 lb. weight capacity
268467	DWR-10-17PD	24 9/16 in. high, 10 rack space, 200 lb. weight capacity, includes plexiglass door

Middle Atlantic

22 IN. DEPTH (20 IN. USEABLE)

Anixter No.	Vendor No.	Description
240831	DWR-35-22	68 5/16 in. high, 35 rack space, 300 lb. weight capacity
275123	DWR-35-22PD	68 5/16 in. high, 35 rack space, 300 lb. weight capacity, includes plexiglass door
231177	DWR-24-22	49 1/16 in. high, 24 rack space, 300 lb. weight capacity
247021	DWR-24-22PD	49 1/16 in., 24 rack space, 300 lb. weight capacity, includes plexiglass door
240832	DWR-21-22	43 3/16 in. high, 21 rack space, 250 lb. weight capacity
229932	DWR-21-22PD	43 13/16 in. high, 21 rack space, 250 lb. weight capacity, includes plexiglass door
231173	DWR-18-22	38 9/16 in. high, 18 rack space, 200 lb. weight capacity
240833	DWR-16-22	35 1/16 in. high, 16 rack space, 200 lb. weight capacity
268471	DWR-16-22PD	22 in. deep, 16 rack space, DWR with plexiglass front door, 200 lb. weight capacity
240834	DWR-12-22	28 1/16 in. high, 12 rack space, 200 lb. weight capacity
231170	DWR-10-22	17 1/2 in. high, 10 rack space, 200 lb. weight capacity
264574	DWR-10-22-PD	24 9/16 in. high, 10 rack space, 200 lb. weight capacity, includes plexiglass door

26 IN. DEPTH (24 IN. USEABLE)

Anixter No.	Vendor No.	Description
275124	DWR-35-26	68 5/16 in. high, 35 rack space, 300 lb. weight capacity
275125	DWR-35-26PD	68 5/16 in. high, 35 rack space, 300 lb. weight capacity, includes plexiglass door
275126	DWR-24-26	49 1/16 in. high, 24 rack space, 300 lb. weight capacity
275127	DWR-24-26PD	49 1/16 in., 24 rack space, 300 lb. weight capacity, includes plexiglass door
275128	DWR-18-26	38 9/16 in. high, 18 rack space, 250 lb. weight capacity
275129	DWR-18-26PD	38 9/16 in. high, 18 rack space, 250 lb. weight capacity, includes plexiglass door
275130	DWR-12-26	28 1/16 in. high, 12 rack space, 200 lb. weight capacity
275131	DWR-12-26PD	28 1/6 in. high, 26 in. deep, 12 rack space, 200 lb. weight capacity, DWR with plexiglass front door

32 IN. DEPTH (30 IN. USEABLE)

Anixter No.	Vendor No.	Description
371051	DWR-12-32	28 1/16 in. high, 12 rack space, 200 lb. weight capacity
371052	DWR-1832	38 9/16 in. high, 18 rack space, 250 lb. weight capacity
371053	DWR-24-32	49 1/16 in. high, 24 rack space, 300 lb. weight capacity

Swing Frame Wall Rack

MIDDLE ATLANTIC PRODUCTS



Open wall-mount racks.

FEATURES

- Open back design maximizes useable wall space
- 90 degree opening with positive stop facilitates punching down of wires
- Ships ready-to-assemble to reduce space needed for storage and transport
- Unique, open swing frame design utilizes pivot points instead of hinges and can be inverted to allow opening from the left or the right
- Durable black powder coat finish
- 50 rack screws included
- Abundant tie points and cable pass throughs ease cable management
- Permanently lubricated bushings with a proprietary pivot prevent sag

Anixter No.	Vendor No.	Description
259902	SFR-12-18	12 rack space, 18 in. deep swing-frame rack
259904	SFR-20-18	20 rack space, 18 in. deep swing-frame rack
375077	SFR-25-18	25 rack space, 18 in. deep swing-frame rack
421701	SFR-12-24	12 rack space, 24 in. deep swing-frame rack
421702	SFR-20-24	20 rack space, 24 in. deep swing-frame rack
421703	SFR-25-24	25 rack space, 24 in. deep swing-frame rack

Security Racks, Consoles and Enclosures

Middle Atlantic

SBX Series 19 in. Wall-mount Rack

MIDDLE ATLANTIC PRODUCTS



Available in 7 and 10 rack spaces high and 17 in. deep, the SBX series enclosures offer an economical solution to those seeking a wall-mount rack for smaller systems. The fully welded construction utilizes 18-gauge steel, incorporates a locking front door which swings open a full 180 degrees on a virtually indestructible hinge, and includes a removable backpan for easier wall mounting. Ventilation slots at the top of each side provide superior cooling, while a deep rail-to-door clearance ratio provides flexibility not found in flush-mount door designs. Additional features include 11-gauge threaded 10-32 rackrails, 1/2 in. and 3/4 in. electrical knockouts at top, bottom and rear and a black textured powder coat finish.

Anixter No.	Vendor No.	Description
231289	SBX-7	12 1/4 in. high, 7 rack space, 14 in. deep, 75 lb. capacity
240784	SBX-10	17 1/2 in. high, 10 rack space, 14 in. deep, 100 lb. capacity

SR 19 in. Pivoting Rack

MIDDLE ATLANTIC PRODUCTS



Wall rack pivots on a floor base for easy equipment access.

FEATURES

- Fully welded construction, 16-gauge steel
- UL Listed in the U.S. and Canada
- 500 lb. weight capacity
- Backpan features a large laser knock-out panel and accommodates 89-D brackets and electrical boxes when used with optional subplate. Backpan accepts up to four subplates
- Bottom cable-entry platform supports entire weight of rack on floor
- 70 in. (40 space)
- One subplate mounting kit for 89-D type brackets and electrical boxes, includes mounting hardware

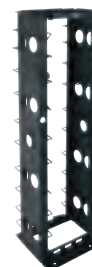
Anixter No.	Vendor No.	Description
255593	SR-40-28	Swing-out cabinet, floor and wall-supported, 40 RMU, 28 in. D

Anixter No.	Vendor No.	Description
231228	SR-40-22	Swing-out cabinet, floor and wall-supported, 40 RMU, 22 in. D
305194	SR-40-32	Swing-out cabinet, floor and wall-supported, 40 RMU, 32 in. D
305454	SR-46-28	Swing-out cabinet, floor and wall-supported, 46 RMU, 28 in. D
319793	SR-24-28	24 RMU, 28 in. D, SR pivoting rack
319794	SR-24-32	Swing-out cabinet, floor and wall-supported, 24 RMU, 32 in. D
240824	SR-SUB	Subplate mounting kit
255015	FD-40	Solid front door, 40 RMU
231151	PFD-40	Plexiglass front door, 40 RMU
231254	VFD-40	Vented front door, 40 RMU
275138	DWR-RR40	*Additional rackrail, 40 RMU
231140	PFD-24	Plexiglass front door, 24 RMU
231251	VFD-24	Vented front door, 24 RMU
255016	FD-24	Solid front door, 24 RMU
302340	DWR-RR24	Additional rackrail, 24 RMU
369836	DWR-RR46	Additional rackrail, 46 RMU

* Fits both SR-40-28 and SR-40-22

MK Cable Management Racks

MIDDLE ATLANTIC PRODUCTS



Engineered for high-density patching applications.

FEATURES

- Two mounting depths available: 16 7/16 in. (6 3/8 in. useable) and new 24 in. (14 in. useable)
- Oversized cable ducts manage massive cable bundles
- Seismic certified to the UBC 1997 and 2001 CBC Seismic Zone 4 and the IBC 2000, IBC 2003, 2002 ASCE Standard 7 and 2003 NFPA 5000 Seismic Use Group III for protecting 500 lb. of essential equipment in upper floor installations with an Ip value of 1.5
- Unique swiveling front D-Rings provide patch cable management
- Integral top cable tray, front and rear
- Modern design incorporates captive fasteners
- Hook-and-loop fasteners and front cable feed-through holes included
- 100 rack screws included

Anixter No.	Vendor No.	Description
231191	MK-19-45	Rack cable management; overall height 84 1/4 in.
337232	MK-1945-24	Rack cable management; overall height 84 1/4 in. and 24 in. depth

Middle Atlantic

VMRK-54 19 in. 54 Space Rack Enclosure

MIDDLE ATLANTIC PRODUCTS



54 space enclosure provides more racking height.

FEATURES

- 100 5/8 in. OD height, 54 useable spaces
- 31 in. OD depth
- UL Listed in the U.S. and Canada
- Broadcast standard 22 in. width
- Fully welded construction
- Substantial 2,500 lb. weight capacity
- Two pairs threaded 10-32 "Z-RAIL" standard
- Seismic Certified (UBC and CBC Zone 4 and IBC, ASCE, and NFPA Seismic use Group III) for protecting 600 lb. of equipment when used with MRK-Z4 bracket

Anixter No.	Vendor No.	Description
240837	VMRK-54	54 RMU VMRK cabinet frame, 31 in. deep with rear door
254081	MRK-Z4	Seismic bracket for MRK and VMRK cabinets

MRK Series 19 in. Gangable Enclosures

MIDDLE ATLANTIC PRODUCTS



These racks feature a narrow design for large-scale multi-bay jobs, and accept optional removable side panels for easy equipment access.

FEATURES

- Fully welded construction, open sides
- UL Listed in the U.S. and Canada
- Substantial 2,500 lb. weight capacity
- Slim 22 in. OD width
- Available in three depths: 26 1/2 in., 31 1/2 in. and 36 in.
- Available with Proliant style cage-nut rackrail
- Seismic Certified (UBC and CBC Zone 4 and IBC, ASCE, and NFPA Seismic use Group III) for protecting 1,000 lb. of equipment when used with MRK-Z4 brackets

26 1/2 IN. OUTSIDE DEPTH

Anixter No.	Vendor No.
231193	MRK-4426

240798	MRK-4026
--------	----------

240799	MRK-3726
--------	----------

240796	MRK-2426
--------	----------

254081	MRK-Z4
--------	--------

Description

44 RMU MRK cabinet frame, 26 in. deep with rear door

40 RMU MRK cabinet frame, 26 in. deep with rear door

37 RMU MRK cabinet frame, 26 in. deep with rear door

24 RMU MRK cabinet frame, 26 in. deep with rear door

Seismic bracket for MRK and VMRK cabinets

31 1/2 IN. OUTSIDE DEPTH

Anixter No.	Vendor No.
231198	MRK-4431

240800	MRK-4031
--------	----------

240801	MRK-3731
--------	----------

240802	MRK-2431
--------	----------

254081	MRK-Z4
--------	--------

Description

44 RMU MRK cabinet frame, 31 in. deep with rear door

40 RMU MRK cabinet frame, 31 in. deep with rear door

37 RMU MRK cabinet frame, 31 in. deep with rear door

24 RMU MRK cabinet frame, 31 in. deep with rear door

Seismic bracket for MRK and VMRK cabinets

36 IN. OUTSIDE DEPTH

Anixter No.	Vendor No.
240806	MRK-4436

334389	MRK-4442
--------	----------

254081	MRK-Z4
--------	--------

Description

44 RMU MRK cabinet frame, 36 in. deep with rear door

44 RMU MRK cabinet frame, 42 in. deep with rear door

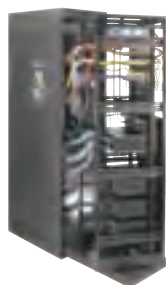
Seismic bracket for MRK and VMRK cabinets

Security Racks, Consoles and Enclosures

Middle Atlantic

WR Series Roll-out Rotating System

MIDDLE ATLANTIC PRODUCTS



Gain unrestricted access to equipment and cabling without the need for tracks and stands. Ideal for environments that require equipment bays to be placed up against walls or back to back, the award-winning WR allows entire bays of equipment to roll out and rotate for service and installation flexibility

FEATURES

- Slides out and rotates 60 degrees, requiring no additional accessories
- UL Listed in the U.S. and Canada
- Host enclosure can be pre-installed on-site while detachable rack frame is integrated with equipment off-site, simplifying installation
- 26 in. useable depth, 32 7/8 in. deep host enclosure
- 750 lb. weight capacity with proper weight distribution
- Available in 44 and 37 space rack frame heights
- Effective cable management system provided
- Knockouts provided for cable pass-through and ganging multiple racks
- Engineered ventilation locations optimize passive heat convection
- Configurable open top accepts a number of options for active thermal management
- Standard front and rear 11-gauge, 10-32 threaded rackrail with marked rack space increments

Anixter No.	Vendor No.	Description
303393	WR-37-32	37SP/32D roll-out rotating rack
303394	WR-44-32	44 SP/32D roll-out rotating rack
303395	WRFD-37	37 SP solid front door for WR cabinet
303396	WRFD-44	44 SP solid front door for WR cabinet

CableSafe Data Wall Cabinet

MIDDLE ATLANTIC PRODUCTS



26 in. width cabinet to allow for much needed space for patching. Comes standard with wide-face rackrail on left and right of cabinet or an optional off-set face rail for dressing to either side using included cable management rings or optional fiber spools.

Anixter No.	Vendor No.	Description
393132	CWR-12-17PD	12RU tall, 17 in. deep with plexiglass door
394305	CWR-18-17PD	18RU tall, 17 in. deep with plexiglass door
394307	CWR-26-17PD	26RU tall, 17 in. deep with plexiglass door
394310	CWR-26-17PD	12RU tall, 22 in. deep with plexiglass door
393134	CWR-18-22PD	18RU tall, 22 in. deep with plexiglass door
394313	CWR-26-22PD	26RU tall, 22 in. deep with plexiglass door
393133	CWR-12-26PD	12RU tall, 26 in. deep with plexiglass door
393135	CWR-18-26PD	18RU tall, 26 in. deep with plexiglass door
394315	CWR-26-26PD	26RU tall, 26 in. deep with plexiglass door
394320	CWR-12-32PD	12RU tall, 32 in. deep with plexiglass door
394323	CWR-18-32PD	18RU tall, 32 in. deep with plexiglass door
393137	CWR-26-32PD	26RU tall, 32 in. deep with plexiglass door

TOR Series Tilt Out Wall Rack

MIDDLE ATLANTIC PRODUCTS



Ideal for small sound systems, paging and patching applications in schools, hotels, offices or anywhere a secure, low-profile wall-mount solution is required.

Anixter No.	Vendor No.	Description
303310	TOR-2-20SP	Racking height 3 1/2 in. (2 space), useable depth 20 in., outside height 30 1/4 in., outside width 24 1/2 in., outside depth 4 7/16 in.
303309	TOR-2-20RP	Racking height 3 1/2 in. (2 space), useable depth 20 in., outside height 30 1/4 in., outside width 24 1/2 in., outside depth 4 7/16 in.
303312	TOR-3-20SP	Racking height 4 1/4 in. (3 space), useable depth 20 in., outside height 30 1/4 in., outside width 24 1/2 in., outside depth 6 3/16 in.
303311	TOR-3-20RP	Racking height 3 1/2 in. (2 space), useable depth 20 in., outside height 30 1/4 in., outside width 24 1/2 in., outside depth 4 7/16 in.
303314	TOR-4-20SP	Racking height 7 in. (4 space), useable depth 20 in., outside height 30 1/4 in., outside width 24 1/2 in., outside depth 4 15/16 in.
303313	TOR-4-20RP	Racking height 7 in. (4 space), useable depth 20 in., outside height 30 1/4 in., outside width 24 1/2 in., outside depth 7 15/16 in.

Middle Atlantic

Horizontal Distribution Rack

MIDDLE ATLANTIC PRODUCTS



Upper bay mounts patch panels and pivots 100 degrees with positive stop for punch-downs. Lower bay mounts switches, hubs and routers and pivots 15 degrees for access to rear connections. Integral electrical box for power distribution. Vented, locking front door for mounting in non-secure areas.

Multiple electrical knockouts to accommodate electrical conduit.

Anixter No.	Vendor No.	Description
268472	HDR-4	3 1/2 in. + 3 1/2 in. (2 space + 2 space)
302499	HDR-FAN	External 4 1/2 in. fan kit

Slim 5 Series 19 in. Equipment Racks

MIDDLE ATLANTIC PRODUCTS

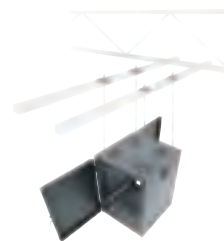


Anixter No.	Vendor No.	Description
231079	5-43	20 in. deep, 75 1/4 in. rack height (43 rack space)
301963	5-43-26	26 in. deep, 75 1/4 height (43 rack spaces)
231077	5-37	20 in. deep, 64 3/4 in. rack height (37 rack space)
301952	5-37-26	26 in. deep, 64 3/4 in. rack height (37 rack space)
243086	5-29	20 in. deep, 50 3/4 in. rack height (29 rack space)
301937	5-29-26	26 in. deep, 50 3/4 in. rack height (29 rack space)
231075	5-21	20 in. deep, 36 3/4 in. rack height (21 rack space)
301922	5-21-26	26 in. deep, 36 3/4 in. rack height (21 rack space)
243087	5-14	20 in. deep, 24 1/2 in. rack height (14 rack space)
360580	5-14-26	26 in. deep, 24 1/2 in. rack height (14 rack space)

Anixter No.	Vendor No.	Description
243088	5-8	20 in. deep, 14 in. rack height (8 rack space)
301964	5-8-26	26 in. deep, 14 in. rack height (8 rack space)

Intermediate Distribution Rack

MIDDLE ATLANTIC PRODUCTS



Rack-mount hubs, routers and other equipment overhead in warehouses, retail outlets and other large, open area locations.

FEATURES

- Mounts overhead directly to uni-strut beams or from trusses using threaded rods (not included)
- Dual exhaust fans extend equipment life
- Bottom plate can be machined in the field to mount wireless antennae, dome cameras and more
- Multiple UHF/VHF antenna knockouts on the bottom of the enclosure
- Grounding/bonding stud in top of enclosure facilitates proper grounding and bonding of electronic equipment, per NEBS and NEC standards
- Side knockouts for conduit pass-through to internal, standard electrical box
- Ships with included rack-mount power distribution unit, model #PD-915R
- Top includes four integral gland grommets for protecting cables and reducing dust within the enclosure
- Durable textured black powder coat finish
- UL Listed in the U.S. and Canada

Anixter No.	Vendor No.	Description
354192	IDF-TM-1224BK	12 SP, truss mounted, 24 in. DP enclosure

115 volt Vertical Power Strips

MIDDLE ATLANTIC PRODUCTS



FEATURES

- UL Listed in the U.S. and Canada
- 15 and 20 amp circuits
- Isolated ground circuits
- Single and dual circuits (with color-coded outlets for each circuit)
- Multiple MOV surge and spike protection
- Circuit breaker protection (non-protected strips are also available)
- Multiple termination choices: cord with plug, metal flex with tails or J-Box

Continued on next page >>

Security Racks, Consoles and Enclosures

Middle Atlantic

(continued) 115 volt Vertical Power Strips

15 AMP STRIPS

Anixter No.	Vendor No.	Description
231126	PD-615C-NS	6 outlet - 15 amp (1 circuit), cord with NEMA 5-15P plug, circuit breaker
240915	PD-615C	6 outlet - 15 amp (1 circuit), cord with NEMA 5-15P plug, MOV surge + EMI filter + breaker
231108	PD-1015C-NS	10 outlet - 15 amp (1 circuit), cord with NEMA 5-15P plug, circuit breaker
231103	PD-1015C	10 outlet - 15 amp (1 circuit), cord with NEMA 5-15P plug, MOV surge + EMI filter + breaker
240917	PD-2X615	12 outlet - 15 amp (2 circuit), 3 in. flex with 6 in. tails
231124	PD-1415C-NS	14 outlet - 15 amp (1 circuit), cord with NEMA 5-15P plug, circuit breaker
231120	PD-1415C	14 outlet - 15 amp (1 circuit), cord with NEMA 5-15P plug, MOV surge + EMI filter + breaker

20 AMP STRIPS

Anixter No.	Vendor No.	Description
240913	PD-620C-NS	6 outlet - 20 amp (1 circuit), cord with NEMA 5-20P plug, circuit breaker
240920	PD-620J-IG	6 outlet - 20 amp ISO ground (1 circuit), J-Box
240914	PD-1020C-NS	10 outlet - 20 amp (1 circuit), cord with NEMA 5-20P plug, circuit breaker
240921	PD-1020J-IG	10 outlet - 20A ISO ground (1 circuit), J-Box
231114	PD-1220C-NS	12 outlet - 20 amp (1 circuit), cord with NEMA 5-20P plug, circuit breaker
240922	PD-1220J	12 outlet - 20 amp (1 circuit), J-Box
240919	PD-1220J-IG	12 outlet - 20 amp ISO ground (1 circuit), J-Box
240918	PD-2X620J	12 outlet - 20 amp (2 circuit), J-Box

High-density Slim 115 volt Vertical Power Strips

MIDDLE ATLANTIC PRODUCTS



FEATURES

- UL and CSA Listed
- Slim 1 5/8 in. width uses a minimum of rack space
- Outlets are spaced to accommodate plug-in power supplies
- Ships complete with a 10 ft. power cord terminated with a NEMA 5-15P plug, and 15 amp circuit breaker

Anixter No.	Vendor No.	Description
258735	PD-2415SC-NS	24 outlet, 15 amp vertical power strip, slim style, no surge protection

Anixter No.	Vendor No.	Description
258736	PD-815SC-NS	8 outlet, 15 amp vertical power strip, slim style, no surge protection
268475	PD-2415SC	24 outlet, 15 amp vertical power strip, slim style
266386	PD-815SC	8 outlet, 15 amp vertical power strip, slim style

PDT Series Power Strips

MIDDLE ATLANTIC PRODUCTS



15 AMP

Anixter No.	Vendor No.	Description
319811	PDT-1015C-NS	10 outlet, 15 amp vertical power strip, thin series, cord, no surge protection
319812	PDT-2015C-NS	20 outlet, 15 amp vertical power strip, thin series, cord, no surge protection
319814	PDT-2X1015T	20 outlet, 72 3/4 in. with J-Box ground top

20 AMP

Anixter No.	Vendor No.	Description
319817	PDT-2020TL-NS	20 outlet, 20 amp vertical power strip, thin series, twist lock cord, no surge protection
319818	PDT-2X1020	2 circuit, 20 outlet, 20 amp vertical power strip
319819	PDT-2X1020T	20 outlet, 72 3/4 in. with J-Box ground top

115 volt Vertical Power Strips - 30 amp

MIDDLE ATLANTIC PRODUCTS



The PD Series dual circuit 30 amp power distribution strip supplies power on two circuits to 15 amp equipment. With 12 duplexes (24 outlets) and a 9 1/2 ft. cord, this new power strip allows connection to uninterruptible power supplies. Ideal for high-density server cabinets. UL listed in the U.S. and Canada.

Anixter No.	Vendor No.	Description
369864	PD-2X1215TL-30CB	24 outlet (12 per circuit) - 2x15 amp circuits, cord with NEMA L5-30P plug, circuit breakers

Multi-mount Rack-mount Power Strips - 15 amp

MIDDLE ATLANTIC PRODUCTS



Designed to optimize space and efficiency in power management, the new single circuit, 15 amp rack-mount power distribution system provides 20 total outlets within a shallow depth.

FEATURES

- Versatile design allows for the unit to be mounted either horizontally or vertically in the rack
- Shallow 4 in. depth
- 20 total outlets (10 on front of unit, 10 on rear of unit)
- 9 in., 14 gauge Signal Safe power cord minimizes the effects of AC magnetic fields
- Reversible, adjustable mounting ears provide more flexible installation options with either 0 degree or 90 degree mounting
- Outlets are oriented in various directions to accommodate plugs of different shapes, sizes and orientations. When installed with 90 degree orientation, the unit supports heavy "wall wart" power supply plugs

Anixter No.	Vendor No.	Description
380260	PD-2015R-NS	One 15 amp, no power switch and the cord length is 9 in.
380261	PD-2015R-HH-NS	One 15 amp with illuminated power switch and a 9 in. length cord

115 volt Rack-mount Power Strips - 15 amp

MIDDLE ATLANTIC PRODUCTS



The PD-915R rack-mount 15 amp power distribution unit is equipped with eight rear outlets and one front outlet. Standard equipment includes surge and spike protection, EMI filtering and a 9 ft. cord. An illuminated combination power switch/circuit breaker is located on the front panel. Occupies one rack space. UL Listed in the U.S. and Canada.

Anixter No.	Vendor No.	Description
231128	PD-915R	9 outlet, 15 amp rack-mount power strip
334452	PD-915RV-RN	9 outlet, 15 amp rack-mount power strip, with two stage surge protection

115 volt Rack-mount Power Strips - 20 amp

MIDDLE ATLANTIC PRODUCTS



The PD-920R-NS rack-mount 20 amp power distribution unit is equipped with eight circuit breaker protected rear outlets (NEMA 5-20R), and one 15 amp front outlet (NEMA 5-15R). An illuminated power switch is located on the front panel and a 20 amp circuit breaker is located in the rear. Occupies one rack space. UL Listed in the U.S. and Canada.

Anixter No.	Vendor No.	Description
231131	PD-920R-NS	9 outlet, 20 amp rack-mount power strip, no surge protection

Uninterruptible Power Supply

MIDDLE ATLANTIC PRODUCTS



Pure Sine Wave technology provides optimum waveform for sensitive A/V components. Line interactive with automatic voltage regulation. Compact rack-mount is only 19 in. deep.

Easily integrates with control systems using RS-232 and analog I/O. Total of 8 surge protected outlets. Expansion battery pack option. Connect up to 10 to a single UPS for extended half-load runtimes of up to 20 hours. Energy Saver circuitry reduces power consumption by up to 75 percent when compared with traditional UPS designs.

Three-year warranty.

Anixter No.	Vendor No.	Description
394381	UPS-1000R	1,000 VA / 750 W UPS, 17 in. W x 3.5 in. H x 19 in. D
394382	UPS-2200R	2,150 VA / 1,650 W UPS, 17 in. W x 3.5 in. H x 19 in. D
394383	UPS-EBPR	UPS expansion battery pack, 17 in. W x 3.5 in. H x 19 in. D
394384	UPS-RBP	UPS replacement battery pack

Security Racks, Consoles and Enclosures

Middle Atlantic

Clamping Rack Shelves

MIDDLE ATLANTIC PRODUCTS



Clamping rack shelves captivate components.

FEATURES

- Available in 2 to 8 rack units
- 15 1/2 in. depth
- UL Listed in the U.S. and Canada

Anixter No.	Vendor No.	Description
231195	RC-2	2 RMU clamping rack shelf
231196	RC-3	3 RMU clamping rack shelf
231197	RC-4	4 RMU clamping rack shelf
240855	CAP5	8 3/4 in. (5 space), knock-down construction
240856	CAP6	10 1/2 in. (6 space), knock-down construction
240857	CAP7	12 1/4 in. (7 space), knock-down construction
240858	CAP8	14 in. (8 space), knock-down construction

VSA Series Adjustable Telescoping Rack Shelf

MIDDLE ATLANTIC PRODUCTS

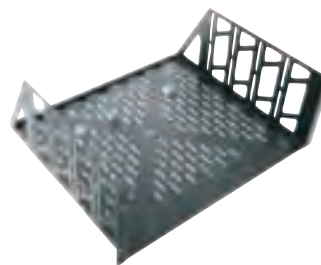


Unlike standard adjustable shelves, the entire VSA shelf telescopes to reach rear rail, providing a range of useable depths from 16 in. to 44 in. Providing the greatest useable depth in its class, the heavy-duty VSA is ideal for even the deepest components. Constructed of hemmed 16-gauge steel and finished in a durable black powder coat, the VSA is fully vented for superior cooling and features many tie points for enhanced cable management. 500 lb. weight capacity.

Anixter No.	Vendor No.	Description
358800	VSA-1626	16 in. - 26 in. telescoping shelf
358801	VSA-2744	27 in. - 44 in. telescoping shelf

Vented Universal Rack Shelves

MIDDLE ATLANTIC PRODUCTS

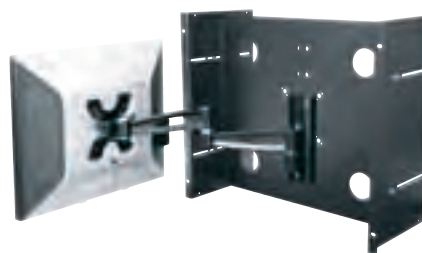


Featuring fully ventilated bottom and sides for heat dissipation, these fully welded, easy-to-install shelves fit all components up to 17 3/8 in. wide to quickly meet all of your rack mounting needs. Made from 16-gauge steel, each unit is individually boxed. Includes three rear brackets to prevent components from sliding backwards. This shelf helps to save valuable space by accepting the mounting of the PD-815SC-PBSH 8 outlet, 15 amp power strip on the rear of shelf. Also allows the attachment of optional clamping bars to secure components.

Anixter No.	Vendor No.	Description
394300	U2V	3 1/2 in. (2 space), 17.44 in. W x 15 in. D, 50 lb.
394302	U3V	5 1/4 in. (3 space), 17.44 in. W x 15 in. D, 70 lb.
394303	U4V	7 in. (4 space), 17.44 in. W x 15.50 in. D, 85 lb.

LCD Rack-mount

MIDDLE ATLANTIC PRODUCTS



FEATURES

- Generous front to back adjustment
- Versatile rack-mounting of LCD screen from 15 in. to 19 in., including some 20 in. monitors
- RM-LCD-MT can mount larger monitors, up to 32 in. depending on weight

Anixter No.	Vendor No.	Description
412963	RM-LCD-MV	9 SP, rack-mount, LCD, VESA
412964	RM-LCD-MT	9 SP, rack-mount, LCD, articulating
412965	RM-LCD-MK	9 SP, rack-mount, LCD, tilt mechanism

Heavy-duty D and TD Series Drawers

MIDDLE ATLANTIC PRODUCTS



Fully enclosed with inside dimensions measuring 15 7/8 in. wide by 14 1/2 in. deep, the D and TD series drawers feature spring-loaded latches and rugged, straightforward construction. Faceplates come with a textured black powder coat or brushed and black anodized finish. Installed keylock option available.

BLACK BRUSHED AND ANODIZED FINISH

Anixter No.	Vendor No.	Description
231158	D2	2 RMU anodized finish rack-mount drawer
231161	D3	3 RMU anodized finish rack-mount drawer
231162	D4	4 RMU anodized finish rack-mount drawer
240885	D5	5 RMU anodized finish rack-mount drawer
229265	TD2	2 RMU textured finish rack-mount drawer
229293	TD3	3 RMU textured finish rack-mount drawer
229297	TD4	4 RMU textured finish rack-mount drawer
240974	TD5	5 RMU textured finish rack-mount drawer
303305	TD8FLK	8 RMU textured finish rack-mount file storage drawer with lock

BLACK TEXTURED FINISH

Anixter No.	Vendor No.	Description
229265	TD2	2 RMU textured finish rack-mount drawer
229293	TD3	3 RMU textured finish rack-mount drawer
229297	TD4	4 RMU textured finish rack-mount drawer
240974	TD5	5 RMU textured finish rack-mount drawer

Rack-mount Computer Keyboard

MIDDLE ATLANTIC PRODUCTS



FEATURES

- Includes high-quality keyboard
- Keyboard features built-in trackball and padded wrist-rests
- Hinged cable manager in rear
- Includes 12 ft. keyboard and trackball cable
- Occupies one space (1.75 in.)

Anixter No.	Vendor No.	Description
231232	RM-KB	Rack-mount computer keyboard, 1 RMU

Rack-mount LCD Monitor With Keyboard and Touch Pad

MIDDLE ATLANTIC PRODUCTS



Space saving design occupies a single rack space. No hassle one-year warranty. Easy to read bright active matrix LCD display. LCD can be in open position for system monitoring while keyboard is in the closed position. Standard 105 key keyboard with touch pad. 17 in. monitor is capable of supporting 1,280 x 1,024 screen resolution.

Anixter No.	Vendor No.	Description
319809	RM-KB-LCD17	Single space rack-mount 17 in. LCD monitor with keyboard and touch pad
369897	RM-KB-LCD17X8KVM	Single space rack-mount 17 in. LCD monitor with keyboard, touch pad and 8-port KVM switch
369899	RM-KB-LCD17X16KVM	Single space rack-mount 17 in. LCD monitor with keyboard, touch pad and 16-port KVM switch
394380	PS2/USB-4C	PS/2 and USB cables, 4 pcs.

LBX Series Lockboxes

MIDDLE ATLANTIC PRODUCTS



Safely secure gear in Middle Atlantic's rack-mount LBX series lockboxes. 9 in. deep, 3 and 4 space models are offered with a durable black powder coat finish. UL Listed in the U.S. and Canada.

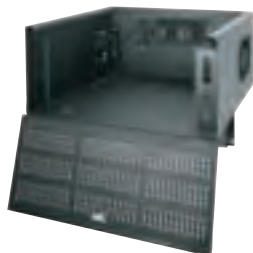
Anixter No.	Vendor No.	Description
231186	LBX-3	3 RMU lock box, rack-mount
231188	LBX-4	4 RMU lock box, rack-mount

Security Racks, Consoles and Enclosures

Middle Atlantic

DLBX Series DVR Lockboxes

MIDDLE ATLANTIC PRODUCTS



Optimized to handle the active or passive thermal management needs of digital video recorders and other digital equipment. Mounts vertically or horizontally to the wall, also can be used as a monitoring shelf. Configurable thermal management system includes fan and two filters, and can be set up to accommodate the needs of any DVR. Optional proportional speed thermostatic fan control ensures fan only runs when needed, reducing maintenance requirements and noise.

Extensive cable management includes tie points, EKO's and cable pass-throughs. Mechanically interlocking top provides added security yet removes easily for equipment servicing. Standard keylocked solid hinging front door allows easy equipment access.

Anixter No.	Vendor No.	Description
281779	DLBX	DVR lockbox with fan
281781	DLBX-WM	Pair of wall-mount brackets for DLBX
302259	DLBX-RR5	10-32 threaded rackrail kit for DLBX, 5 spaces with cutouts for cable pass-through
352618	FC-2-215-1C	Proportional speed thermostatic fan control with two 15 amp outlets

EB Series Blank Panels

MIDDLE ATLANTIC PRODUCTS



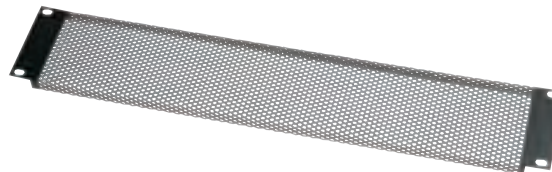
FEATURES

- Flanged steel
- Durable powder coat finish

Anixter No.	Vendor No.	Description
231178	EB1	1 RMU blank panel
231183	EB2	2 RMU blank panel
231187	EB3	3 RMU blank panel
231190	EB4	4 RMU blank panel
240849	EB5	5 RMU blank panel
240850	EB6	6 RMU blank panel

VT Series Vent Panels

MIDDLE ATLANTIC PRODUCTS



FEATURES

- Vent panels with high percentage of open area
- 16-gauge perforated steel
- Flanged for strength
- Durable black powder coat finish

Anixter No.	Vendor No.	Description
240851	VT1	1 3/4 in. (1 space)
240852	VT2	3 1/2 in. (2 space)
240853	VT3	5 1/4 in. (3 space)
240854	VT4	7 in. (4 space)

Perforated Security Covers

MIDDLE ATLANTIC PRODUCTS



Eliminate the prospect of any tampering with these tough security covers. Offered in large or fine perforation styles (models S and SF respectively), each cover is 1 inch deep.

LARGE PERFORATION STYLE

Allows unobstructed view of knob settings

Anixter No.	Vendor No.	Description
231271	S1	1 space (1 3/4 in.) regular perforated pattern
231275	S2	2 space (3 1/2 in.) regular perforated pattern
231277	S3	3 space (5 1/4 in.) regular perforated pattern
231278	S4	4 space (7 in.) regular perforated pattern

FINE PERFORATION STYLE

Allows sight of LEDs; most secure

Anixter No.	Vendor No.	Description
231290	SF1	1 RMU fine perforated vented security panel
231292	SF2	2 RMU fine perforated vented security panel
231293	SF3	3 RMU fine perforated vented security panel
231294	SF4	4 RMU fine perforated vented security panel

Brush Grommet Panels

MIDDLE ATLANTIC PRODUCTS



The brush grommet panels provide a clean, organized cable entry method when used in conjunction with any work surface. Features a built-in cable management tray. Available in one and new two space versions. Two space brush grommet panel fits in opening on all MW Series top options.

Anixter No.	Vendor No.	Description
302118	BR1	1 RMU brush panel for cable pass through
334554	BR2	2 RMU brush panel for cable pass through

Quiet Fan Panel Assemblies

MIDDLE ATLANTIC PRODUCTS



Available with one or two fans in a textured or anodized aluminum finish. 3 space, includes fans and grills. UQFP Series are 2 space panels with either two or four fans. Available with or without the LED temperature display, fan failure notification and remote over-temp notification.

ANODIZED

Anixter No.	Vendor No.	Description
231194	QFP-2	2 fan, 5 1/4 in. high (3 space), free air dB rating < 33 dB
231171	QFP-1	1 fan, 5 1/4 in. high (3 space), free air dB rating < 30 dB

TEXTURED

Anixter No.	Vendor No.	Description
243125	QTFP-2	2 fan, 5 1/4 in. high (3 space), free air dB rating < 33 dB
243126	QTFP-1	1 fan, 5 1/4 in. high (3 space), free air dB rating < 30 dB
326261	UQFP-2D	50 cfm fan panel with LED display, remote failure notification, overtemp alarm
326262	UQFP-4D	100 cfm fan panel with LED display, remote failure notification, overtemp alarm
326260	UQFP-2	50 cfm fan panel, overtemp alarm
325467	UQFP-4	100 cfm fan panel, overtemp alarm

Cable Management Bars

MIDDLE ATLANTIC PRODUCTS



The economical and effective way to manage cable horizontally. Made from 1/4 in. diameter flattened rod (model LBP-1R, LBP-1.5 and model LBP-1R4) or 3/16 in. thick aluminum (model LBP-1S), each bar provides convenient cable tie points.

Anixter No.	Vendor No.	Description
231182	LBP-1R	Round horizontal lacing bars, ten-pack
231185	LBP-1S	Square horizontal lacing bars, ten-pack
240884	LBP-1.5	1.5 in. offset round rod, 10 pcs.
231184	LBP-1R4	4 in. offset round rod, 10 pcs.
231181	LBP-1A	L bar, 10 pcs.
290517	LBP-2A	2 in. offset L style lacing bars, ten-pack
290518	LBP-4A	4 in. offset L style lacing bars, ten-pack
290519	LBP-6A	L bar, 6 in. offset, 10 pcs.
305193	LBP-LTF	2 RMU lacing panel, ten-pack

Cable Management

MIDDLE ATLANTIC PRODUCTS



FEATURES

- Available in a variety of styles to suit any application
- Welded steel construction
- Finished in durable black powder coat

Anixter No.	Vendor No.	Description
231106	HCM-1	1 RMU horizontal cable manager
231117	HCM-1V	1 3/4 in. (1 space) micro-clip style, end rings
231109	HCM-1D	1 RMU horizontal cable manager, large D-Rings
231115	HCM-1DV	1 3/4 in. (1 space) D-Ring style, end rings
231119	HCM-2D	2 RMU horizontal cable manager, large D-Rings
231123	HCM-2DV	3 1/2 in. (2 space) D-Ring style, end rings
231111	HCM-1DR	1 RMU horizontal cable manager, front and rear D-Rings
231121	HCM-2DR	2 RMU horizontal cable manager, front and rear D-Rings
231163	D-RING	Wall-mount/rack-mount D-Ring

Security Racks, Consoles and Enclosures

Middle Atlantic

Plastic Horizontal Cable Managers

MIDDLE ATLANTIC PRODUCTS



FEATURES

- Matches and integrates well with PCD Series Ducts
- Comes with removable hinged cover
- Available in single piece and 4 packs

Anixter No.	Vendor No.	Description
421707	PHCM-1-2	One space and 2 in. depth
421708	PHCM-1-4	One space and 2 in. depth
421709	PHCM-2-3	Two space and 3 in. depth
421710	PHCM-1-2-P4	Four pack with one space and 2 in. depth
421711	PHCM-1-4-P4	Four pack with one space and 4 in. depth
421712	PHCM-2-3-P4	Four pack with two space and 3 in. depth

PCD Series Plastic Cable Managers

MIDDLE ATLANTIC PRODUCTS



Flexible application for vertical cable management on open frame racks. Plastic cable ducts provide a cost-effective solution to protect, route and organize data cables, patch cords and power cords.

FEATURES

- Available in 1 1/2 in., 2 in., 3 in. and 4 in. widths
- Available in 2 in., 3 in. and 4 in. depths; single channel and 6 in. and 8 in. depths; dual channel
- 38, 45 and 51 split space heights available for all two-post and four-post racks
- Slotted finger design allows for horizontal cable access exactly where its needed
- Fingers can be easily removed for larger capacity
- Plastic covers provide organization while keeping cables hidden

Anixter No.	Vendor No.	Description
421713	PCD-1.5X2-4BK	1.5 in. W x 2 in. D x 41RU, single, four pieces
421719	PCD-1.5X4-4BK	1.5 in. W x 4 in. D x 41RU, single, four pieces

Anixter No.	Vendor No.	Description
421720	PCD-2-3-51SC	2 in. W x 3 in. D x 51RU, single
421722	PCD-2-3-45SC	2 in. W x 3 in. D x 45RU, single
421723	PCD-2-3-38SC	2 in. W x 3 in. D x 38RU, single
421724	PCD-2-3-30SC	2 in. W x 3 in. D x 30RU, single
421726	PCD-2-3-25SC	2 in. W x 3 in. D x 25RU, single
421728	PCD-2-3-20SC	2 in. W x 3 in. D x 20RU, single
421731	PCD-2-3-15SC	2 in. W x 3 in. D x 15RU, single
421733	PCD-2-3-12SC	2 in. W x 3 in. D x 12RU, single
421734	PCD-2-3-8SC	2 in. W x 3 in. D x 8RU, single
421735	PCD-3-3-51SC	3 in. W x 3 in. D x 51RU, single
421736	PCD-3-6-51DC	3 in. W x 6 in. D x 51RU, dual
421737	PCD-3-3-45SC	3 in. W x 3 in. D x 45RU, single
421738	PCD-3-6-45DC	3 in. W x 6 in. D x 51RU, dual
421739	PCD-3-3-38SC	3 in. W x 3 in. D x 38RU, single
421740	PCD-3-6-38DC	3 in. W x 6 in. D x 38RU, dual
421741	PCD-4-4-51SC	4 in. W x 4 in. D x 51RU, single
421742	PCD-4-8-51DC	4 in. W x 8 in. D x 51RU, dual
421743	PCD-4-4-45SC	4 in. W x 4 in. D x 45RU, single
421744	PCD-4-8-45DC	4 in. W x 8 in. D x 45RU, dual
421745	PCD-4-4-38SC	4 in. W x 4 in. D x 38RU, single
421746	PCD-4-8-38DC	4 in. W x 8 in. D x 38RU, dual

Hinged Horizontal Cable Managers

MIDDLE ATLANTIC PRODUCTS



FEATURES

- Dress cables between open frame racks and other enclosures
- Cable strain relief provides more reliable connections
- Multiple cable pass-throughs - top, rear, bottom and sides
- Solid face conceals cables from view
- Hinged panel allows easy entry for and access to cable bundles

Anixter No.	Vendor No.	Description
336582	HHCM-1	One rack space, hinged horizontal cable manager
268463	HHCM-2	Two rack space, hinged horizontal cable manager

Screw Cover Type 1 Pull Box

HOFFMAN ENCLOSURES INC



Designed for use as a junction box and pull box in commercial and general applications. Flush covers and door frames must be ordered separately for flush installations.

FEATURES

- Industry standard: NEMA/EEMAC Type 1
- Flat, removable covers fastened with plated steel screws
- Provision for grounding
- Mounting holes on back of box
- Unique keyhole screw slots in the cover permit removal of the cover without extracting the screws
- ANSI 61 gray polyester powder paint finish inside and out

Anixter No.	Vendor No.	Description
366304	ASE4X4X4	Pull box, 4 in. H x 4 in. W x 4 in. D
ASE6X6X4	ASE6X6X4	Pull box, 6 in. H x 6 in. W x 4 in. D
ASE8X8X4	ASE8X8X4	Pull box, 8 in. H x 8 in. W x 4 in. D
366307	ASE10X10X4	Pull box, 10 in. H x 10 in. W x 4 in. D
366308	ASE12X12X4	Pull box, 12 in. H x 12 in. W x 4 in. D
366309	ASE6X6X6	Pull box, 6 in. H x 6 in. W x 6 in. D
366310	ASE8X8X6	Pull box, 8 in. H x 8 in. W x 6 in. D
366311	ASE10X10X6	Pull box, 10 in. H x 10 in. W x 6 in. D
ASE12X12X6	ASE12X12X6	Pull box, 12 in. H x 12 in. W x 6 in. D
ASE18X18X6	ASE18X18X6	Pull box, 18 in. H x 18 in. W x 6 in. D
366314	ASE24X24X6	Pull box, 24 in. H x 24 in. W x 6 in. D
366315	ASE24X24X8	Pull box, 24 in. H x 24 in. W x 8 in. D

More sizes available and also without knockouts. For more information contact your sales representative.

Hinged Cover Type 1 Cutout Box

HOFFMAN ENCLOSURES INC



Designed for use as a surface-mounted junction box, service box, switch box or cutout box.

FEATURES

- Industry standard: NEMA/EEMAC Type 1
- 14 or 16 gauge steel
- Butt hinges
- Mounting holes on back of box
- Provision for grounding

Anixter No.	Vendor No.	Description
366316	AHE6X6X4	Hinged cover cutout box, 6 in. H x 6 in. W x 4 in. D
366317	AHE8X6X4	Hinged cover cutout box, 8 in. H x 6 in. W x 4 in. D
366318	AHE8X8X4	Hinged cover cutout box, 8 in. H x 8 in. W x 4 in. D
366319	AHE10X8X4	Hinged cover cutout box, 10 in. H x 8 in. W x 4 in. D
366320	AHE10X10X4	Hinged cover cutout box, 10 in. H x 10 in. W x 4 in. D
366321	AHE12X10X4	Hinged cover cutout box, 12 in. H x 10 in. W x 4 in. D
366322	AHE10X8X6	Hinged cover cutout box, 10 in. H x 8 in. W x 6 in. D
366323	AHE10X10X6	Hinged cover cutout box, 10 in. H x 10 in. W x 6 in. D
366324	AHE12X12X6	Hinged cover cutout box, 12 in. H x 12 in. W x 6 in. D
366325	AHE16X16X6	Hinged cover cutout box, 16 in. H x 16 in. W x 6 in. D
355062	AHE18X18X6	Hinged cover cutout box, 18 in. H x 18 in. W x 6 in. D
366326	AHE24X18X6	Hinged cover cutout box, 24 in. H x 18 in. W x 6 in. D

More sizes available. For more information contact your sales representative.

Security Racks, Consoles and Enclosures

Hoffman

Type 1 Enclosure

HOFFMAN ENCLOSURES INC



Designed for use in control and instrumentation applications in areas that do not require oiltight and dust-tight specifications. Available perforated back panel reduces time required to mount components.

FEATURES

- Industry standard: NEMA/EMAC Type 1
- Flush slotted latch operated with a screwdriver. Optional latches available
- Weldnuts provided for mounting optional panels
- 16 gauge steel
- Butt hinges
- Mounting holes on back of enclosure
- ANSI 61 gray polyester powder paint finish inside and out

ENCLOSURES

Anixter No.	Vendor No.	Description
366327	A6N64	Type 1 small enclosure, 6 in. H x 6 in. W x 4 in. D
366328	A8N64	Type 1 small enclosure, 8 in. H x 6 in. W x 4 in. D
366329	A8N84	Type 1 small enclosure, 8 in. H x 8 in. W x 4 in. D
366330	A12N104	Type 1 small enclosure, 12 in. H x 10 in. W x 4 in. D
366331	A12N124	Type 1 small enclosure, 12 in. H x 12 in. W x 4 in. D
366332	A8N86	Type 1 small enclosure, 8 in. H x 8 in. W x 6 in. D
366333	A10N106	Type 1 small enclosure, 10 in. H x 10 in. W x 6 in. D
366334	A12N126	Type 1 small enclosure, 12 in. H x 12 in. W x 6 in. D
366335	A14N126	Type 1 small enclosure, 14 in. H x 12 in. W x 6 in. D
366336	A16N126	Type 1 small enclosure, 16 in. H x 12 in. W x 6 in. D
366337	A20N16ALP	Type 1 medium enclosure, 20 in. H x 16 in. W x 6.62 in. D
366338	A20N20ALP	Type 1 medium enclosure, 20 in. H x 20 in. W x 6.62 in. D
255674	A24N24ALP	Type 1 medium enclosure, 24 in. H x 24 in. W x 6.62 in. D
366339	A20N12BLP	Type 1 medium enclosure, 20 in. H x 12 in. W x 8.62 in. D

Anixter No.	Vendor No.	Description
366340	A20N20BLP	Type 1 medium enclosure, 20 in. H x 20 in. W x 8.62 in. D
366341	A24N20BLP	Type 1 medium enclosure, 24 in. H x 20 in. W x 8.62 in. D
366342	A24N24BLP	Type 1 medium enclosure, 24 in. H x 24 in. W x 8.62 in. D
366343	A24N24DLP	Type 1 medium enclosure, 24 in. H x 24 in. W x 12.62 in. D
A42N3609	A42N3609	Type 1 large enclosure, 42 in. H x 36 in. W x 9.25 in. D

ACCESSORIES

Anixter No.	Vendor No.	Description
366344	A6N6PP	Perforated back panel for 6 in. H x 6 in. W small enclosure
366345	A8N6PP	Perforated back panel for 8 in. H x 6 in. W small enclosure
366346	A8N8PP	Perforated back panel for 8 in. H x 8 in. W small enclosure
335283	A10N10PP	Perforated back panel for 10 in. H x 10 in. W small enclosure
366347	A12N10PP	Perforated back panel for 12 in. H x 10 in. W small enclosure
366348	A12N12PP	Perforated back panel for 12 in. H x 12 in. W small enclosure
366349	A14N12PP	Perforated back panel for 14 in. H x 12 in. W small enclosure
366350	A16N12PP	Perforated back panel for 16 in. H x 12 in. W small enclosure
366351	A16N12MPP	Perforated back panel for 16 in. H x 12 in. W medium enclosure
366352	A20N12MPP	Perforated back panel for 20 in. H x 12 in. W medium enclosure
366353	A20N16MPP	Perforated back panel for 20 in. H x 16 in. W medium enclosure
366354	A20N20MPP	Perforated back panel for 20 in. H x 20 in. W medium enclosure
366355	A24N20MPP	Perforated back panel for 24 in. H x 20 in. W medium enclosure
331032	A24N24MPP	Perforated back panel for 24 in. H x 24 in. W medium enclosure
A42P36	A42P36	Solid back panel for 42 in. H x 36 in. W large enclosure
AL12AR	AL12AR	Optional cylinder lock kit

More sizes available. For more information contact your sales representative.

Type 1 Control Box

HOFFMAN ENCLOSURES INC



This convenient combination enclosure, with a perforated panel assembly, provides a ready solution for mounting electrical control gear. The enclosed panel is perforated to reduce the time required to mount components. Use a #8 self-tapping screw to attach components directly onto the panel, eliminating the need to measure, mark and drill.

FEATURES

- Industry standard: NEMA/EEMAC Type 1
- Door has key lock quarter-turn latch; two keys included
- Includes removable 16 gauge gray perforated panel
- ANSI 61 gray polyester powder paint finish inside and out

Anixter No.	Vendor No.	Description
A12126T1PP	A12126T1PP	Type 1 enclosure with lock and panel, 12 in. H x 12 in. W x 6 in. D
A16126T1PP	A16126T1PP	Type 1 enclosure with lock and panel, 16 in. H x 12 in. W x 6 in. D
A2016AT1PP	A2016AT1PP	Type 1 enclosure with lock and panel, 20 in. H x 16 in. W x 6.62 in. D
A2420AT1PP	A2420AT1PP	Type 1 enclosure with lock and panel, 24 in. H x 20 in. W x 6.62 in. D
A3624AT1PP	A3624AT1PP	Type 1 enclosure with lock and panel, 36 in. H x 24 in. W x 6.62 in. D
A3630AT1PP	A3630AT1PP	Type 1 enclosure with lock and panel, 36 in. H x 30 in. W x 6.62 in. D

Type 3R Enclosures

HOFFMAN ENCLOSURES INC

Designed for use as a wiring box and junction box. Enclosure provides protection against rain, sleet and snow in outdoor installations or against dripping water in indoor installations.

FEATURES

- Industry standard: NEMA/EEMAC Type 3R
- Drip shield top and seam-free sides, front and back
- Slip-on removable cover fastened with plated steel screws along the bottom edge
- Provision for padlocking
- No gasketing
- ANSI 61 gray polyester powder paint finish inside and out

SCREW COVER



Anixter No.	Vendor No.	Description
366672	A4R44	Type 3R screw cover enclosure, 4 in. H x 4 in. W x 4 in. D
366673	A6R64	Type 3R screw cover enclosure, 6 in. H x 6 in. W x 4 in. D
259511	A8R64	Type 3R screw cover enclosure, 8 in. H x 6 in. W x 4 in. D
259513	A8R84	Type 3R screw cover enclosure, 8 in. H x 8 in. W x 4 in. D
366674	A10R104	Type 3R screw cover enclosure, 10 in. H x 10 in. W x 4 in. D
316679	A12R124	Type 3R screw cover enclosure, 12 in. H x 12 in. W x 4 in. D
366675	A6R66	Type 3R screw cover enclosure, 6 in. H x 6 in. W x 6 in. D
366676	A8R86	Type 3R screw cover enclosure, 8 in. H x 8 in. W x 6 in. D
366677	A10R106	Type 3R screw cover enclosure, 10 in. H x 10 in. W x 6 in. D
366678	A12R126	Type 3R screw cover enclosure, 12 in. H x 12 in. W x 6 in. D
366679	A16R126	Type 3R screw cover enclosure, 16 in. H x 12 in. W x 6 in. D
366680	A18R186	Type 3R screw cover enclosure, 18 in. H x 18 in. W x 6 in. D
366681	A24R246	Type 3R screw cover enclosure, 24 in. H x 24 in. W x 6 in. D
366682	A12R128	Type 3R screw cover enclosure, 12 in. H x 12 in. W x 8 in. D
366683	A18R188	Type 3R screw cover enclosure, 18 in. H x 18 in. W x 8 in. D
366684	A24R248	Type 3R screw cover enclosure, 24 in. H x 24 in. W x 8 in. D

Continued on next page >>

Security Racks, Consoles and Enclosures

Hoffman

(continued) Type 3R Enclosures

HINGED COVER



Anixter No.	Vendor No.	Description
366685	A6R44HCR	Type 3R hinged cover enclosure, 6 in. H x 4 in. W x 4 in. D
317368	A6R64HCR	Type 3R hinged cover enclosure, 6 in. H x 6 in. W x 4 in. D
366686	A8R64HCR	Type 3R hinged cover enclosure, 8 in. H x 6 in. W x 4 in. D
366687	A8R86HCR	Type 3R hinged cover enclosure, 8 in. H x 8 in. W x 6 in. D
366688	A10R86HCR	Type 3R hinged cover enclosure, 10 in. H x 8 in. W x 6 in. D
366689	A12R106HCR	Type 3R hinged cover enclosure, 12 in. H x 10 in. W x 6 in. D
366690	A12R126HCR	Type 3R hinged cover enclosure, 12 in. H x 12 in. W x 6 in. D
366691	A12R1210HCR	Type 3R hinged cover enclosure, 12 in. H x 12 in. W x 10 in. D

Type 3R Telephone Cabinet

HOFFMAN ENCLOSURES INC

Designed as a wall-mount telephone termination cabinet that is suited for outdoor and indoor use. These cabinets are also used for mounting and protecting telecommunications circuit accessories, cross-connect terminal block assemblies, maintenance terminal modules, cable-splice enclosures, network interface devices, wireguide assemblies and telephone protectors.

FEATURES

- Industry standard: NEMA Type 3R
- Lift off hinges
- Four position grounding bar #14-2/0
- Tamper resistant quarter turn latch, 7 mm square drive; opens with 5/16 12-point socket
- Padlock hasp
- 3/4 in. thick plywood panel
- ANSI 61 gray polyester powder paint finish inside and out

SINGLE-DOOR



Anixter No.	Vendor No.	Description
366692	ATC26R248	Type 3R telephone cabinet, single-door, 26 in. H x 24 in. W x 8 in. D
366693	ATC36R248	Type 3R telephone cabinet, single-door, 36 in. H x 24 in. W x 8 in. D
366694	ATC36R369	Type 3R telephone cabinet, single-door, 36 in. H x 36 in. W x 9 in. D
366697	ATC36R3612	Type 3R telephone cabinet, single-door, 36 in. H x 36 in. W x 12 in. D
366698	ALTC3R	Locking T-handle accessory

DOUBLE-DOOR



Anixter No.	Vendor No.	Description
366695	ATC48R369	Type 3R telephone cabinet, double-door, 48 in. H x 36 in. W x 9 in. D
366696	ATC48R489	Type 3R telephone cabinet, double-door, 48 in. H x 48 in. W x 9 in. D
366698	ALTC3R	Locking T-handle accessory

More sizes available. For more information contact your sales representative.

Type 4x Fiberglass Hinged Cover Wi-Fi Cabinet

HOFFMAN ENCLOSURES INC



Provides a secure enclosure for wireless equipment in both indoor and outdoor locations. Ideal for locations such as tunnels, floor vaults, marinas, outside walls and rooftops. Fiberglass construction allows Wi-Fi and WLAN signals to pass through the cabinet unimpeded. Light weight for easy mounting. Available with solid and

window covers. Covers are secured with screws; optional quick release latches are available.

FEATURES

- Industry standard: NEMA/EEMAC Type 4, 4X, 12 and 13
- Enclosures and cover made of molded fiberglass polyester that resists chemicals and temperature change
- Includes a 3/4 in. plywood panel for mounting equipment
- Seamless foam-in-place gasket assures watertight and dust-tight seal
- Screw cover enclosures are secured with two captivated Type 316 stainless steel slotted cross point cover screws

Anixter No.	Vendor No.	Description
366699	D664CHSCFGP	Type 4x, fiberglass, Wi-Fi enclosure, solid cover, 6 in. H x 6 in. W x 4 in. D
317883	D16148CHSCFGP	Type 4x, fiberglass, Wi-Fi enclosure, solid cover, 16 in. H x 14 in. W x 8 in. D
366700	D181610CHSCFGP	Type 4x, fiberglass, Wi-Fi enclosure, solid cover, 18 in. H x 16 in. W x 10 in. D

Also available with window cover. For more information contact your sales representative.

ACCESSPLUS II Type 1 Double-hinged Wall-mount Cabinets

HOFFMAN ENCLOSURES INC



ACCESSPLUS II Cabinets provide security, equipment access, cooling and support for network and other 19 in. rack-mount equipment. The cabinet has three components: front door, center section and wall section. Double-hinged for easy equipment access; center section provides 19 in. rack mounting per EIA universal spacing and is accessed through the front door or swing the center section away from the wall section for rear access.

FEATURES

- Industry standard: NEMA Type 1
- Front door has either a solid steel or hardened, tinted safety-glass window door for superior scratch resistance
- Center section easily removed from rear section; tool-less one-person installation possible
- Self-locking center-to-wall section latches in two locations
- Front access to all latches (no exposed side latches); cabinet can be installed tightly in corners
- Vented sides provide cross flow ventilation to improve heat dissipation

- RAL 9005 black light-textured, low-gloss polyester powder paint

Anixter No.	Vendor No.	Description
394585	EWMW242418	ACCESSPLUS II, window door, 24 in. H x 24 in. W x 18 in. D, 12RU
394586	EWMW362418	ACCESSPLUS II, window door, 36 in. H x 24 in. W x 18 in. D, 19RU
394587	EWMW482418	ACCESSPLUS II, window door, 48 in. H x 24 in. W x 18 in. D, 26RU
390048	EWMW242425	ACCESSPLUS II, window door, 24 in. H x 24 in. W x 25 in. D, 12RU
390051	EWMW362425	ACCESSPLUS II, window door, 36 in. H x 24 in. W x 25 in. D, 19RU
390053	EWMW482425	ACCESSPLUS II, window door, 48 in. H x 24 in. W x 25 in. D, 26RU
394588	EWMS242418	ACCESSPLUS II, solid door, 24 in. H x 24 in. W x 18 in. D, 12RU
394589	EWMS362418	ACCESSPLUS II, solid door, 36 in. H x 24 in. W x 18 in. D, 19RU
394590	EWMS482418	ACCESSPLUS II, solid door, 48 in. H x 24 in. W x 18 in. D, 26RU
394591	EWMS242425	ACCESSPLUS II, solid door, 24 in. H x 24 in. W x 25 in. D, 12RU
394592	EWMS362425	ACCESSPLUS II, solid door, 36 in. H x 24 in. W x 25 in. D, 19RU
394593	EWMS482425	ACCESSPLUS II, solid door, 48 in. H x 24 in. W x 25 in. D, 26RU

More sizes and configurations available. For more information contact your sales representative.

ProTek DH Type 4 and Type 12 Double-hinged Wall-mount Cabinet

HOFFMAN ENCLOSURES INC

This double-hinged wall-mounted cabinet is ideal for protecting 19 in. network equipment from falling dirt, splashing water, dust and other contaminants. This versatile cabinet mounts to a wall or can be pole-mounted with the optional pole mounting kit. Designed to hold multiple pieces of voice/data equipment comfortably, it can be mounted to be left- or right-hinged and comes completely assembled and ready to mount.

FEATURES

- Industry standard: NEMA/EEMAC Type 4 or 12
- Solid door provides complete physical and visual protection
- Window door, made with scratch-resistant safety glass, allows equipment monitoring without opening the door
- Double-hinged for easy equipment access
- Foam-in-place seamless gasket around door seals against outdoor air infiltration and is non-absorbing and chemical resistant
- Type 12 cabinets have solid or window doors and a locking wing knob with two keys. They provide security and convenience in indoor applications
- Type 4 cabinets have solid doors and a padlock capable 1/4-turn latch. They provide easy operation and locking options in indoor and outdoor applications
- One set of adjustable tapped 19 in. rack angles included
- RAL 7035 light gray textured, low-gloss polyester powder paint

Continued on next page >>

Security Racks, Consoles and Enclosures

Hoffman

(continued) ProTek DH Type 4 and Type 12 Double-hinged Wall-mount Cabinet

PROTEK DH WALL-MOUNT CABINETS



Anixter No.	Vendor No.	Description
366701	PTDHW162415G	ProTek, Type 12, window door, 16 in. H x 24 in. W x 15 in. D, 7RU
366702	PTDHW202415G	ProTek, Type 12, window door, 20 in. H x 24 in. W x 15 in. D, 10RU
366703	PTDHW242415G	ProTek, Type 12, window door, 24 in. H x 24 in. W x 15 in. D, 12RU
366704	PTDHW242424G	ProTek, Type 12, window door, 24 in. H x 24 in. W x 24 in. D, 12RU
366705	PTDHW362415G	ProTek, Type 12, window door, 36 in. H x 24 in. W x 15 in. D, 19RU
366706	PTDHW362424G	ProTek, Type 12, window door, 36 in. H x 24 in. W x 24 in. D, 19RU
366707	PTDHW482415G	ProTek, Type 12, window door, 48 in. H x 24 in. W x 15 in. D, 26RU
331734	PTDHW482424G	ProTek, Type 12, window door, 48 in. H x 24 in. W x 24 in. D, 26RU
366709	PTDHS242424G	ProTek, Type 12, solid door, 24 in. H x 24 in. W x 24 in. D, 12RU
366710	PTDHS362424G	ProTek, Type 12, solid door, 36 in. H x 24 in. W x 24 in. D, 19RU
366711	PTDHS482424G	ProTek, Type 12, solid door, 48 in. H x 24 in. W x 24 in. D, 26RU
366712	PTDHS242424G4	ProTek, Type 4, solid door, 24 in. H x 24 in. W x 24 in. D, 12RU
366713	PTDHS362424G4	ProTek, Type 4, solid door, 36 in. H x 24 in. W x 24 in. D, 19RU
366714	PTDHS482424G4	ProTek, Type 4, solid door, 48 in. H x 24 in. W x 24 in. D, 26RU

PROTEK DH AC PACKAGE



ProTek Air Conditioner Packages provide cool air to internal equipment when high ambient air temperatures exist (up to 130° F). AC packages include an 800 Btu indoor/outdoor air conditioner that operates on 115 V AC with 5-15P plug.

Anixter No.	Vendor No.	Description
394618	PTDHW242429GA	ProTek AC package, Type 12, window door, 24 in. H x 24 in. W x 29 in. D, 12RU
394619	PTDHW362429GA	ProTek AC package, Type 12, window door, 36 in. H x 24 in. W x 29 in. D, 19RU
394620	PTDHW482429GA	ProTek AC package, Type 12, window door, 48 in. H x 24 in. W x 29 in. D, 26RU
394621	PTDHS242429GA4	ProTek AC package, Type 4, solid door, 24 in. H x 24 in. W x 29 in. D, 12RU
394623	PTDHS362429GA4	ProTek AC package, Type 4, solid door, 36 in. H x 24 in. W x 29 in. D, 19RU
394624	PTDHS482429GA4	ProTek AC package, Type 4, solid door, 48 in. H x 24 in. W x 29 in. D, 26RU

More sizes and configurations available. For more information contact your sales representative.

DVR and 19 in. Rack Equipment Cabinet

HOFFMAN ENCLOSURES INC



These cabinets provide physical protection and access control to DVR, 19 in. equipment or other equipment. Mount the cabinet vertically or horizontally.

FEATURES

- Industry standard: NEMA Type 1
- Top cover has tool-less removal, is captivated by door and secured by keylock, providing easy access and installation
- Solid front door has 180 degree opening continuous hinge
- Vented sides dissipate heat from equipment
- A fan-ready cutout is provided
- 19 in. rack angles and hardware included
- Doors and body made of 18 gauge steel; top cover is 16 gauge steel
- RAL 9005 black, light-textured, low-gloss polyester powder paint

Anixter No.	Vendor No.	Description
394599	DVR4U	4RU cabinet, 9.5 in. H x 21.7 in. W x 18.4 in. D
394604	DVR6U	6RU cabinet, 13 in. H x 21.7 in. W x 18.4 in. D
394598	A4AXFNPQG	4 in. fan, 115 V AC, with plug

W5701 Sight-Line Console

WINSTED



Sight-Line consoles allow flexibility and expandability in console configurations to fit any space requirement, user need or budget. In today's demanding control rooms, monitor viewing angles and operator sight lines are critical to long-term success. To address this issue, Sight-Line consoles feature Winsted's new integrated Versa-Trak monitor array system, which offers the ultimate in adjustability. The Versa-Trak system permits users to optimize, and easily modify, sight lines and viewing angles based on personal needs. Sight-Line is a beautiful console with a feature-set second to none. The W5701 is just a sample of Sight-Line's flexibility. Let us design the perfect solution for you.

Contact your local sales representative for ordering information.

Insight Console

WINSTED



Winsted's compact console features a high-density profile designed for a high-performance world. Insight's overall depth of 32 in. saves valuable space and maximizes control room functionality. Our engineers reduced the depth of both the chase and the work surface on the popular Sight-Line console to create a solution with a more efficient footprint that meets ergonomic standards, and provides ample desktop workspace. This configuration is just a sample of Insight's flexibility. Whether you need a single workstation, or a complete control room, Insight is the perfect solution. Let us design a console just for you.

Contact your local sales representative for ordering information.

Ascend Sit/Stand Console

WINSTED



Winsted's sit/stand console offers three programmable height settings for ultimate versatility and optimum comfort in any control room setting. This completely redesigned sit/stand console includes electric-lift legs, which enable operators to quickly and easily adjust the work surface height from 29 to 44 inches with the push of a button. Two, three and four leg systems are available with load capacities of 300, 450 and 600 lb. respectively. This is just one example of an Ascend sit/stand solution. Let us design a console specifically for you, and take your control room to new heights with Ascend.

Contact your local sales representative for ordering information.

E4858 Encompass II Workstation

WINSTED



This unique workstation fits every environment from multimedia, to video, to security and office settings. Bring your work envelope closer to you. Encompass your surroundings with this workstation for maximum work performance. Choose from popular in-stock components, or create a customized look. Designed for efficient workspace comfort. The E4858 is just one example of Winsted's Encompass II product line. Choose from many other pre-configured models, or let us design the perfect solution for you.

Contact your local sales representative for ordering information.

Security Racks, Consoles and Enclosures

Winsted

E4860 Surveillance Workstation

WINSTED



The E4860 provides a compact, economical solution for supporting your electronics. This ergonomic workstation enhances the workspace environment while maximizing both operator performance and operator comfort. Customized workstations offer a personal touch, with expanding possibilities in the future. The E4860 is just one option, Winsted has many other workstations to choose from.

Contact your local sales representative for ordering information.

M-View Monitor Wall

WINSTED



Winsted's M-View is a custom built, extruded aluminum monitor wall that is flexible and completely modular. Each M-View is designed and manufactured to support your specific monitor configuration and fit in your unique space. The M-View is fabricated from lightweight, high-strength extruded aluminum with a black anodized finish. The monitor wall can support any size LCD and/or plasma screen and can be configured as an in-line, concave or convex mounting solution. The M-View seamlessly integrates technology and space to optimize viewing angles, improve operator comfort and increase productivity. This configuration is just an example of M-View's flexibility.

Contact your local sales representative for ordering information.

G5305 LCD/3 Console

WINSTED



LCD/3 Consoles target the low-profile demands of today's command centers, reception areas, surveillance areas and control rooms. Put your LCD application into single, double or triple-tier modular consoles. LCD/3 Consoles are ergonomically designed for the flat panel market and expand easily with your growing needs. The G5305 is just one example of Winsted's LCD/3 product line. Choose from several other pre-configured models.

Contact your local sales representative for ordering information.

J8540 System 85/Console

WINSTED



System/85 modular consoles create technical furniture solutions unique to your needs. Flexible components, TruForm work surfaces, standard EIA rack-mount support and heavy-duty welded steel deliver customized solutions where you need them. Models include: standard pedestal, base/slope frame, sides, tops, blank panels for base section and a TruForm work surface with brackets. The J8540 is just one example of Winsted's System/85 product line. Choose from several other standard configurations.

Contact your local sales representative for ordering information.