



Section 11 Intrusion Detection Systems

Belden	11.1–11.3
Bosch Security Systems, Inc.	11.4–11.9
GE Security	11.10–11.25
Fiber SenSys	11.26–11.27
Optex	11.28–11.30

Multiconductor Shielded Plenum/Alarm Cable

BELDEN

Power limited circuit and communications cable for plenum applications. For use in remote control, signaling, security systems, communications, intercom/P.A. systems, sound/audio and nurse call.

SPECIFICATIONS

1. CONDUCTOR: Solid or stranded bare copper
2. INSULATION: Flamarrest
3. SHIELD: Beldfoil shield applied overall with a drain wire
4. JACKET: Natural Flamarrest with ripcord
5. STANDARDS: NEC CMP or CL2P (CMP: 22-16 AWG), (CL2P: 14-12 AWG)
6. TEMPERATURE: 75°C

Anixter No.	Vendor No.	Conductor Size AWG	Conductor Strand	No. of Conductors	Insulation Thickness (in.)	Jacket Thickness (in.)	Nominal O.D. (in.)	Approx. Wt. lb./1,000 ft.
B6000FE	6000FE 8771000	12	19 x 25	2	0.011	0.015	0.260	68
B6100FE	6100FE 8775000	14	19 x 27	2	0.011	0.015	0.220	51
B6101FE	6101FE 8771000	14	19 x 27	3	0.011	0.015	0.234	66
B6200FE	6200FE 8775000	16	19 x 29	2	0.009	0.015	0.178	33
B6201FE	6201FE 8771000	16	19 x 29	3	0.009	0.015	0.195	45
B6202FE	6202FE 8771000	16	19 x 29	4	0.009	0.015	0.215	55.3
B6300FE	6300FE 8775000	18	7 x 26	2	0.009	0.015	0.162	23
B6301FE	6301FE 8775000	18	7 x 26	3	0.009	0.015	0.172	31
B6302FE	6302FE 8775000	18	7 x 26	4	0.009	0.015	0.188	37
B6304FE	6304FE 8775000	18	7 x 26	6	0.009	0.015	0.226	52
B6307FE	6307FE 8771000	18	7 x 26	9	0.009	0.015	0.266	73
B6309FE	6309FE 8771000	18	7 x 26	12	0.009	0.018	0.306	99
B6320FE	6320FE 8771000	18	Solid	2	0.009	0.015	0.150	22
B6400FE	6400FE 8771000	20	7 x 28	2	0.009	0.015	0.138	17
B6401FE-U1000	6401FE 877U1000	20	7 x 28	3	0.009	0.015	0.150	22
B6402FE	6402FE 8771000	20	7 x 28	4	0.009	0.015	0.167	27
B6420FE	6420FE 8771000	20	Solid	2	0.009	0.015	0.137	15.4
B6500FE	6500FE 8775000	22	7 x 30	2	0.009	0.015	0.128	13
B6501FE	6501FE 8771000	22	7 x 30	3	0.009	0.015	0.135	16
B6502FE	6502FE 8771000	22	7 x 30	4	0.009	0.015	0.147	20
B6504FE	6504FE 8775000	22	7 x 30	6	0.009	0.015	0.175	26
B6508FE	6508FE 8771000	22	7 x 30	10	0.009	0.015	0.222	42
B6520FE	6520FE 8771000	22	Solid	2	0.009	0.015	0.122	13

Belden

Multiconductor Shielded Nonplenum/Alarm Cables

BELDEN

Power limited circuit and communications cable for riser and conduit. For use in remote control, signaling, security systems, communications, intercom/P.A. systems, sound/audio and nurse call.

SPECIFICATIONS

1. CONDUCTOR: Solid or stranded bare copper
2. INSULATION: PVC or polypropylene
3. SHIELD: Beldfoil shield applied overall with a drain wire
4. JACKET: Gray PVC with ripcord
5. STANDARDS: NEC CMR or CL3R (CMR: 22-16 AWG), (CL3R: 14-12 AWG). FPLR (2C 12 AWG and 2C 14 AWG when jacket is red)
6. TEMPERATURE: 75°C

Anixter No.	Vendor No.	Conductor Size AWG	Conductor Strand	No. of Conductors	Insulation Thickness (in.)	Jacket Thickness (in.)	Nominal O.D. (in.)	Approx. Wt. lb./1,000 ft.
B5000FE	5000FE 0021000	12	19 x 25	2	0.014	0.015	0.272	67
B5100FE	5100FE 0081000	14	19 x 27	2	0.014	0.015	0.238	51
B5101FE-1000	5101FE 0081000	14	19 x 27	3	0.014	0.015	0.250	66
B5200FE	5200FE 0081000	16	19 x 29	2	0.010	0.015	0.188	32
B5201FE	5201FE 0081000	16	19 x 29	3	0.010	0.015	0.200	42
B5202FE	5202FE 0081000	16	19 Strands	4	0.010	0.015	0.220	54
B5300FE	5300FE 0081000	18	7 x 26	2	0.010	0.015	0.165	23
B5301FE	5301FE 0081000	18	7 x 26	3	0.010	0.015	0.175	30
B5302FE	5302FE 0081000	18	7 x 26	4	0.010	0.015	0.192	37
B5303FE	5303FE 0081000	18	7 x 26	5	0.010	0.015	0.211	45
B5304FE	5304FE 0081000	18	7 x 26	6	0.010	0.015	0.230	52
B5306FE	5306FE 0081000	18	7 x 26	8	0.010	0.015	0.270	64
B5307FE	5307FE 0081000	18	7 x 26	9	0.007	0.018	0.254	71
B5320FE	5320FE 0081000	18	Solid	2	0.010	0.015	0.155	21
B5400FE	5400FE 0081000	20	7 x 28	2	0.010	0.015	0.145	17
B5401FE	5401FE 0081000	20	7 x 28	3	0.010	0.015	0.153	21
B5402FE	5402FE 0081000	20	7 x 28	4	0.010	0.015	0.168	26
B5403FE-1000	5403FE 0081000	20	7 x 28	5	0.010	0.015	0.184	30
B5500FE	5500FE 0081000	22	7 x 30	2	0.010	0.015	0.130	12
B5501FE	5501FE 0081000	22	7 x 30	3	0.010	0.015	0.138	15
B5502FE	5502FE 0081000	22	7 x 30	4	0.010	0.015	0.152	18
B5504FE	5504FE 0081000	22	7 x 30	6	0.010	0.015	0.179	29
B5506FE	5506FE 0081000	22	7 x 30	8	0.010	0.015	0.195	32.2
B5508FE	5508FE 0081000	22	7 x 30	10	0.010	0.015	0.230	40
B5520FE	5520FE 0081000	22	Solid	2	0.010	0.015	0.125	14
B5521FE	5521FE 0081000	22	Solid	3	0.010	0.015	0.132	12

Multiconductor Nonshielded Plenum Security/Alarm Cables

BELDEN

Power limited circuit and communications cable for riser or plenum applications. For use in remote control, signaling, security systems, communications, intercom/P.A. systems, speaker, sound, audio and nurse call.

SPECIFICATIONS

1. CONDUCTOR: Solid or stranded bare copper
2. INSULATION: Flamarrest
3. JACKET: Natural Flamarrest with ripcord. Speaker cable constructions available in additional colors
4. STANDARDS: NEC CMP or CL2P (CMP: 22-16 AWG), (CL2P: 14-12 AWG)
5. TEMPERATURE: 75°C
6. Coil packages save space and time

Anixter No.	Vendor No.	Conductor Size AWG	Conductor Strand	No. of Conductors	Insulation Thickness (in.)	Jacket Thickness (in.)	Nominal O.D. (in.)	Approx. Wt. lb./1,000 ft.
B6000UE	6000UE 8775000	12	19 x 25	2	0.011	0.015	0.256	58
B6001UE	6001UE 8771000	12	19 x 25	3	0.011	0.015	0.271	83
B6100UE	6100UE 8775000	14	19 x 27	2	0.011	0.015	0.222	38
B6101UE	6101UE 8771000	14	19 x 27	3	0.011	0.015	0.236	56
B6102UE	6102UE 8771000	14	19 x 27	4	0.011	0.015	0.261	73
B6200UE	6200UE 8771000	16	19 x 29	2	0.009	0.015	0.178	26
B6201UE-1000	6201UE 8771000	18	19 x 29	3	0.009	0.015	0.189	37
B6202UE	6202UE 8771000	16	19 x 29	4	0.009	0.015	0.208	48
B6300UE	6300UE 8771000	18	7 x 26	2	0.009	0.015	0.157	18
B6301UE	6301UE 8775000	18	7 x 26	3	0.009	0.015	0.168	25.4
B6302UE	6302UE 8771000	18	7 x 26	4	0.009	0.015	0.186	39
B6303UE	6303UE 8771000	18	7 x 26	5	0.009	0.015	0.203	40
B6304UE	6304UE 8775000	18	7 x 26	6	0.009	0.015	0.222	51
B6306UE	6306UE 8771000	18	7 x 26	8	0.009	0.015	0.242	65
B6308UE	6308UE 8771000	18	7 x 26	10	0.009	0.015	0.286	75
B6309UE	6309UE 8771000	18	7 x 26	12	0.009	0.020	0.296	88
B6320UE	6320UE 877U1000	18	Solid	2	0.009	0.015	0.147	17
B6321UE	6321UE 8771000	18	Solid	3	0.009	0.015	0.156	24
B6400UE-1000	6400UE 8771000	20	7 x 28	2	0.009	0.015	0.138	13.9
B6401UE	6401UE 8771000	20	7 x 28	3	0.009	0.015	0.146	18
B6402UE	6402UE 8771000	20	7 x 28	4	0.009	0.015	0.160	24.2
B6403UE	6403UE 8771000	20	7 x 28	5	0.009	0.015	0.176	28
B6500UE-U1000	6500UE 877U1000	22	7 x 30	2	0.009	0.015	0.124	10
B6501UE-1000	6501UE 8771000	22	7 x 30	3	0.009	0.015	0.131	13.3
B6502UE	6502UE 8775000	22	7 x 30	4	0.009	0.015	0.143	24
B6504UE	6504UE 8775000	22	7 x 30	6	0.009	0.015	0.171	24
B6506UE	6506UE 8771000	22	7 x 30	8	0.009	0.015	0.186	31.3
B6508UE-U1000	6508UE 877U1000	22	7 x 30	10	0.009	0.015	0.218	39.4
B6509UE	6509UE 8771000	22	7 x 30	12	0.009	0.015	0.225	45
B6520UE	6520UE 8771000	22	Solid	2	0.009	0.015	0.118	9.5
B6521UE-U1000	6521UE	22	Solid	3	0.009	0.015	0.125	13

Intrusion Detection Systems

Bosch Security Systems, Inc.

DS1100i Glass Breakage Detector Series

BOSCH SECURITY SYSTEMS



The DS1100i Detector Series uses microprocessor-based Sound Analysis Technology (SAT) to listen for the specific frequencies associated with breaking glass. The DS1101i, DS1108i, DS1103i, and DS1102i can be used to detect breakage of plate, tempered, laminated and wired glass types. A built-in environmental test feature alerts the installer of false alarm hazards in harsh environments. Several cover designs are available.

FEATURES

- Microprocessor-based Sound Analysis Technology (SAT)
- Automatic environmental test circuitry
- Sound check
- Multiple enclosure designs

Anixter No.	Vendor No.	Description
242825	DS1101I	3.4 in., round, Form C contacts
242826	DS1102I	3.4 in., square, Form C contacts
242827	DS1103I	4.8 in. x 3.25 in., flush mount, closed contacts
242828	DS1108I	3.4 in., round, closed contacts

DS1109i Glass Breakage Detector

BOSCH SECURITY SYSTEMS



The DS1109i Detector uses microprocessor-based Sound Analysis Technology (SAT) to listen for the specific frequencies associated with breaking glass. It can be used to detect breakage of plate, tempered, laminated and wired glass types. A built-in environmental test feature alerts the installer of false alarm hazards in harsh environments. It is specially designed to be mounted on door or window frames, too. A built-in magnetic contact allows monitoring of a door or window opening.

FEATURES

- Microprocessor-based Sound Analysis Technology (SAT)
- Automatic environmental test circuitry
- Built-in door/window contact

Anixter No.	Vendor No.	Description
242829	DS1109I	Glassbreak detector

DS415i/435i Photoelectric Intrusion Detector

BOSCH SECURITY SYSTEMS



This series consists of the DS415i, DS415iDC, and DS435i with their separate transmitters and receivers. The transmitter emits an invisible infrared beam to the receiver. If the beam is broken, the receiver signals an alarm.

FEATURES

- 500 ft. (150 m) range
- Friction lock optics
- Alarm retransmission

Anixter No.	Vendor No.	Description
242807	DS415I	Single beam detector
242808	DS435I	High-performance DC is the only detector that includes inhibit wiring and alarm memory

DS420 Dual Beam Indoor/Outdoor Photoelectric Detector Series

BOSCH SECURITY SYSTEMS



The DS420 Series consists of the DS422, DS424 and DS426. The detectors consist of separate transmitters and receivers. The transmitters emit invisible infrared beams to the receivers. If the beams are broken, the receivers signal an alarm.

FEATURES

- Dual beam detection
- Two mounting options
- Adjustable trigger response time

Anixter No.	Vendor No.	Description
242809	DS422	130 ft. indoor, 65 ft. outdoor
242810	DS424	260 ft. indoor, 130 ft. outdoor
242811	DS426	395 ft. indoor, 200 ft. outdoor

Bosch Security Systems, Inc.

DS484Q/DS486Q Photoelectric Detector

BOSCH SECURITY SYSTEMS



FEATURES

- Quad beam detection and multiple-channel operation
- Easy alignment
- Sounder for installation ease
- Two coverage ranges and four mounting options
- Environmental discrimination circuit and/or mode selection

Anixter No.	Vendor No.	Description
305495	DS484Q	Coverage of 400 ft. outdoors, 800 ft. indoors, current draw of 35 mA

DS720i TriTech PIR Intrusion Detector

BOSCH SECURITY SYSTEMS



The wall- or ceiling-mount DS720i TriTech PIR/Microwave Detector covers up to 300 ft. (91.5 m). Motion monitor and anti-masking protection provide coverage integrity. Field replaceable mirrored optics and three different coverage patterns provide installation flexibility.

FEATURES

- Supervised microwave and PIR
- Anti-masking with spray detect
- Motion monitor
- Motion Analyzer II
- Field-changeable mirrored optics

Anixter No.	Vendor No.	Description
240016	DS720I	Motion monitor

DS778 Long-range PIR Detector

BOSCH SECURITY SYSTEMS



The wall-mount, long range (200 ft. x 15 ft., 60 m x 5.7 m) DS778 PIR Detector uses Motion Analyzer II signal processing to reduce false alarms. To aid in walk testing, the DS778 features a high-efficiency alarm LED that is visible throughout the coverage pattern. This allows one installer to install and test the detector. The detector's internally pointable optics and mounting options provide installation flexibility.

FEATURES

- Motion Analyzer II processing
- Field replaceable pointable mirrored optics
- Q-Map signal processing
- 200 ft. x 15 ft. (60 m x 5.7 m) coverage
- Four mounting options

Anixter No.	Vendor No.	Description
240028	DS778	Long-range PIR

DS820i/DS835i Surface- or Corner-mount TriTech PIR/Microwave Detector with Pet Immunity

BOSCH SECURITY SYSTEMS



The DS820i and DS835i Detectors provide immunity to false alarms caused by pets (one dog up to 100 lb./45 kg, two dogs up to 60 lb./27 kg or up to 10 cats). Passive infrared and microwave processing provide excellent catch performance with freedom from false alarms. This small unobtrusive detector is simple to install and does not require field adjustments.

FEATURES

- Artificial intelligence
- Flexible mounting height
- Supervised microwave
- No adjustment necessary
- Pet immunity
- Draft/insect immunity
- Eight detection layers including Look Down Zones
- Temperature compensation

Anixter No.	Vendor No.	Description
240008	DS820I	20 ft. x 20 ft. coverage area
240009	DS835I	35 ft. x 35 ft. coverage area

Intrusion Detection Systems

Bosch Security Systems, Inc.

DS825/DS840 Surface- or Corner-mount TriTech PIR/Microwave Detectors with Pet Immunity

BOSCH SECURITY SYSTEMS



The DS825 and DS840 Detectors provide immunity to false alarms caused by pets. Passive infrared and microwave processing provides excellent catch performance with freedom from false alarms.

FEATURES

- Artificial intelligence
- First Step Processing (FSP)
- Pointable mirrored optics
- Four mounting options
- Supervised microwave and PIR
- Pet/animal immunity
- Temperature compensation

Anixter No.	Vendor No.	Description
240010	DS825	25 ft. x 25 ft. coverage area
240011	DS840	40 ft. x 40 ft. coverage area

Blue Line P1 Passive Infrared Detector

BOSCH SECURITY SYSTEMS



The BLP1 detector uses a Fresnel lens designed to produce sharply-focused images throughout the field of view of the lens to provide superior response to intruders. Easy installation and flexible mounting options provide state-of-the-art detection every time.

FEATURES

- First Step Processing (FSP)
- Installation-friendly two-piece design
- Easy wiring access with plug-in terminals
- No range or height adjustments
- Draft and insect immunity
- Optional camera modules

Anixter No.	Vendor No.	Description
305197	ISM-BLP1	Passive infrared detector
305198	ISM-BLP1-P	Pet-friendly passive infrared detector

Blue Line D1-P TriTech Detectors

BOSCH SECURITY SYSTEMS



The ISM-BLD1-P Pet Friendly TriTech Detectors use a combination of passive infrared (PIR) and microwave detection technologies. With advanced signal processing and these detection technologies, the detectors generate alarms for human intruders without generating false alarms for pets. These small unobtrusive detectors are simple to install and do not need field adjustments.

FEATURES

- 11 m x 11 m (35 ft. x 35 ft.) broad coverage
- EN50131-2-4 Grade 2 compliant
- Pet friendly
- Dual detection technologies with advanced signal processing

Anixter No.	Vendor No.	Description
305497	ISM-BLD1-P-F1	10.525 GHz detector
305498	ISM-BLD1-P-F3	9.9 GHz detector
305499	ISM-BLD1-P-F4	10.687 GHz detector

Blue Line Q1 Quad Passive Infrared Detector

BOSCH SECURITY SYSTEMS



The BLQ1 Quad PIR Detector uses two individual sensors that operate like two PIRs in one. Each sensor processes signals separately. Both must activate to cause an alarm. This increases reliability, because false alarm sources such as noise spikes and small warm objects are ignored.

FEATURES

- Dual sensor/quad element design (two separate pyroelectric elements) with 35 ft. (11 m) broad coverage
- Installation-friendly two-piece design
- Easy wiring access with plug-in terminals
- No range or height adjustments
- Eight detection layers including user-selectable look-down zone

Anixter No.	Vendor No.	Description
307872	ISM-BLQ1	Quad PIR detector

Bosch Security Systems, Inc.

Blue Line A1-CC Color Camera Modules

BOSCH SECURITY SYSTEMS



The BLA1-CC color camera modules attach to the Blue Line detectors. These camera modules, available in either NTSC or PAL formats, are small, easy to mount and attractive. Set the camera to run continuously or to run for either 15 seconds or 90 seconds when activated by the detector alarm.

FEATURES

- Color charge-coupled device (CCD) camera with 3.4 lx light sensitivity
- 330 lines of horizontal resolution
- The camera may be left on or controlled by the detector alarm
- Selectable (Form A or Form B) alarm relay outputs
- Includes video cable with BNC connector

Anixter No.	Vendor No.	Description
305501	ISM-BLA1-CC-N	A1-CC color camera

Blue Line A1-CM Monochrome Camera Modules

BOSCH SECURITY SYSTEMS



The BLA1-CM monochrome camera modules attach to the Blue Line detectors. These camera modules, available in either EIA or CCIR format, are small, easy to mount and attractive. Set the camera to run continuously or to run for either 15 seconds or 90 seconds when triggered by the detector alarm.

FEATURES

- Pinhole charge-coupled device (CCD) camera with 3 lx light sensitivity
- 380 TV lines of horizontal resolution
- The camera may be left on or controlled by the detector alarm
- Selectable (Form A or Form B) alarm relay outputs
- Includes video cable with BNC connector
- Available in EIA or CCIR format

Anixter No.	Vendor No.	Description
305502	ISM-BLA1-CM-C	A1-CM monochrome camera

Light/Sounder Modules

BOSCH SECURITY SYSTEMS

The light and sounder modules available with the Blue Line of intrusion detectors provide greater flexibility when there are requirements for additional emergency lighting or local annunciation for PIR activation. These modules mount to the top of all of the Blue Line detectors and install with an additional two conductors at each location. With these aesthetically designed modules, the installer can provide cost-effective solutions for both commercial and residential applications.

FEATURES

- Four white LEDs with diffuser to distribute illumination
- Programmable timer on light module from 30 seconds to 4 minutes
- Dual brightness settings
- Sounder module provides 85 dB at 1 m

LED ADD-ON MODULE



Anixter No.	Vendor No.	Description
311625	ISM-BLA1-LM	Blue Line LED add-on module

SOUNDER ADD-ON MODULE



Anixter No.	Vendor No.	Description
311626	ISM-BLA1-SM	Blue Line sounder add-on module

Intrusion Detection Systems

Bosch Security Systems, Inc.

Professional Series Detectors

BOSCH SECURITY SYSTEMS



While other motion detectors merely react to input from one or two sensors with a simple yes or no decision, Bosch Professional Series detectors actually integrate and process data from up to five different sensors to make intelligent alarm decisions. The exclusive Sensor Data Fusion technology uses a sophisticated microcontroller within the detector to constantly adjust and balance the sensitivities of each sensor, resulting in the most accurate alarm decisions.

FEATURES

- Contain long and short- to mid-range PIRs
- Dynamic temperature compensation
- Active white light suppression
- Range adaptive Doppler Radar
- Sealed units prevent damage during installation
- Flexible mounting heights from 7 to 10 ft. without adjustment

Anixter No.	Vendor No.	Description
341760	ISC-PPR1-W16	Professional Series PIR detector
341761	ISC-PDL1-W18G	Professional Series dual detector

DS936 Low-profile Panoramic Ceiling-mount PIR Detector

BOSCH SECURITY SYSTEMS



The ceiling-mount, low-profile panoramic DS936 PIR Detector uses alternate polarity pulse count. It also uses a pointable Fresnel lens to provide up to 24 ft. (7.5 m) of coverage and may be mounted on the surface or semi-flush directly to a ceiling or a standard octagonal electrical box.

FEATURES

- Enhanced signal processing
- 360° x 24 ft. (7.5 m) pattern
- Surface/semi-flush mountable
- Internal pointability
- Sealed detector chamber
- Mounting height 7 ft. to 12 ft. (2 m to 3.6 m)

Anixter No.	Vendor No.	Description
240031	DS936	Ceiling-mount PIR detector

DS9370 TriTech PIR/Microwave Ceiling-mount Intrusion Detector

BOSCH SECURITY SYSTEMS



The ceiling-mount panoramic DS9370 TriTech PIR/Microwave Detector uses several patented processing techniques to provide excellent catch performance with freedom from false alarms. It can be used on ceilings as high as 25 ft. (7.6 m). With three separate PIR sections that are fully adjustable, the DS9370 provides coverage integrity at all mounting heights, plus the ability to customize the coverage for specific areas.

FEATURES

- Up to 25 ft. (7.6 m) mounting height
- Fully adjustable optics for coverage integrity and customization
- Hinged chassis and base plate for easy installation
- High-efficiency LED and Light Pipe System for easy walk testing
- First Step Processing (FSP)
- Microwave adaptive processing
- 360° x 70 ft. (21 m) diameter pattern

Anixter No.	Vendor No.	Description
274270	DS9370	TriTech PIR/microwave ceiling-mount intrusion detector - white
305196	DS9371	TriTech PIR/microwave ceiling-mount intrusion detector - black

DS938Z Ceiling-mount PIR

BOSCH SECURITY SYSTEMS



The DS938Z and ZX938Z are ceiling-mount, 360 degree passive infrared intrusion detectors that use Motion Analyzer II to reduce false alarms. Both are equipped with advanced PIR detection and supervision circuits and are designed to provide an alarm condition upon detection of an intruder passing through its area of coverage. The ZX938Z includes a built-in POPIT for convenient addressable alarm and trouble signalling. The built-in POPIT makes it easier to install, with low current consumption and fewer wires needed. Motion Analyzer II uses multiple thresholds and timing windows to analyze timing, amplitude, duration and polarity of signals to make an alarm decision. Three PIR sensitivity settings are available.

Bosch Security Systems, Inc.

FEATURES

- Motion Analyzer II Processing (patented)
- Motion Monitor (patented)
- Self-Test supervision system
- Changeable mirrors
- 360° x 60 ft. (18.3 m) diameter pattern
- 8 ft. to 18 ft. (2.4 m to 5.5 m) mounting height
- Built-in POPIT with tamper sensor (ZX938Z)

Anixter No.	Vendor No.	Description
231787	DS938Z	PIR, motion monitor

DS939 Ceiling-mount PIR

BOSCH SECURITY SYSTEMS



The ceiling-mount DS939 PIR Detector provides a 70 ft. (21 m) panoramic coverage pattern and can be used on ceilings as high as 25 ft. (7.6 m). With three separate PIR sections that are fully adjustable, the DS939 provides coverage integrity at all mounting heights, plus the ability to customize the coverage for specific areas. The DS939 uses several patented processing techniques to provide excellent catch performance with freedom from false alarms.

FEATURES

- Up to 25 ft. (7.6 m) mounting height
- Fully adjustable optics for coverage integrity and customization
- Hinged chassis and base plate for easy installation
- High-efficiency LED and light pipe system for easy walk testing
- First Step Processing (FSP)
- 360° x 70 ft. (21 m) diameter pattern

Anixter No.	Vendor No.	Description
274271	DS939	Ceiling-mount PIR

DS940P Pet Immune PIR Detector

BOSCH SECURITY SYSTEMS



This detector series includes the DS940P and DS940PT. Each detector uses "grooves-in" Fresnel lenses to provide superior catch performance. The ease of

installation and flexible mounting options provide state-of-the-art detection every time.

FEATURES

- First Step Processing (FSP)
- Easy to install with flexible mounting options
- Small unobtrusive design
- Pet and animal immunity
- 40 ft. (12 m) broad coverage
- Bracket mounting option
- Draft/insect immunity
- Temperature compensation

Anixter No.	Vendor No.	Description
240012	DS940P	Motion detector
309006	DS940PT	Motion detector with tamper switch

DS950/DS970 High-performance TriTech PIR/Microwave Detectors

BOSCH SECURITY SYSTEMS



The DS950 and DS970 Detectors provide excellent catch performance and freedom from false alarms with five layers of detection (including "look down" zone), patented passive infrared and microwave processing.

FEATURES

- Five layers of detection including "look down zone"
- Supervised microwave and PIR
- Anti-masking feature
- Selectable PIR sensitivity
- Five mounting options
- Draft/insect immunity
- Motion monitor

Anixter No.	Vendor No.	Description
240019	DS950	50 ft. x 50 ft. coverage area
240021	DS970	70 ft. x 70 ft. coverage area

Intrusion Detection Systems

GE Security

NX-4 Security Control Panel

GE SECURITY



The NX-4 brings sophisticated security with an economical appeal to the NetworX family of control/communicators. Capable of supporting virtually any of the powerful expander modules from the NetworX family, the NX-4 expands the universe of options available to the smaller systems user.

FEATURES

- Four fully programmed zones
- Zone doubling options
- Hardware/wireless hybrid
- All zones programmable as fire and burglary
- 20 customizable pre-configured zone types
- Eight user codes
- One duress code
- Up/downloadable with competitor lockout
- SIA and Contact ID format
- Swinger shutdown
- Siren supervision
- Automatic arming with auto retry
- Fire alarm verification

CONTROL PANEL

Includes owner's manual and installation instructions. Keypad and transformer sold separately.

Anixter No.	Vendor No.	Description
235272	NX-4	4-zone control panel

KIT

Kit includes NX-4 panel, NX-108E LED keypad and 16.5 V AC, 40 VA transformer.

Anixter No.	Vendor No.	Description
235275	NX-4-KIT	NX-4 kit with NX-108E keypad and transformer

FASTPACK

Fastpack includes NX-4 panel, NX-1308E LED keypad, hardwired pet-immune motion sensor, 16.5 V AC, 40 VA transformer, 12 V 4 Ah backup battery, 15 watt interior speaker, RJ block and cord.

Anixter No.	Vendor No.	Description
235274	NX-4-FP	NX-4 Fastpack with NX-1308E keypad

NX-6 Security Control Panel

GE SECURITY



With available add-on modules to accommodate enhancements such as wireless integration, X-10 home automation, two-way voice, and cellemetry backup, the NX-6 provides flexible expansion capabilities for mid-size installations.

FEATURES

- Six fully programmable zones
- Zone doubling to 12 zones option
- Wireless expansion up to 16 zones
- All zones programmable as fire or burglary
- Up/downloadable with competitor lockout
- Maximum eight keypads per partition
- Automatic arming with auto retry
- Assign zones to one or multiple partitions
- 40 user code (four or six digit)
- Built-in siren driver/voltage out
- Siren supervision
- SIA and Contact ID formats

CONTROL PANEL

Includes owner's manual and installation instructions. Keypad and transformer sold separately.

Anixter No.	Vendor No.	Description
235277	NX-6	NX-6 control panel

KIT

Includes NX-6 panel, NX-108E LED keypad and 16.5 V AC, 40 VA transformer.

Anixter No.	Vendor No.	Description
235280	NX-6-KIT	NX-6 kit with NX-108E keypad

FASTPACK

Includes NX-6 panel, NX-1308E LED or NX-1448e keypad, hardwired pet-immune motion sensor, 16.5 V AC, 40 VA transformer, 12 V 4 Ah backup battery, 15 watt interior speaker, RJ block and cord.

Anixter No.	Vendor No.	Description
235279	NX-6-FP	NX-6 Fastpack with NX-1308E keypad
320881	NX-6-FP-8	NX-6 Fastpack with NX-1448e keypad

NX-8 Security Control Panel

GE SECURITY



Only from NetworX, the "installer-friendly" X-Pand-A-Can design allows for the first time, complete integration of multiple systems modules within one enclosure.

FEATURES

- Expandable to 48 fully programmable zones
- All zones programmable as fire or burglary
- Maximum 24 keypads
- Wireless expansion up to 48 zones
- Up/downloadable with competitor lockout
- Four on-board outputs
- Maximum eight keypads per partition
- 2-wire or 4-wire smoke detectors
- Built-in siren driver/voltage out

CONTROL PANEL

Includes owner's manual and installation instructions. Keypad and transformer sold separately.

Anixter No.	Vendor No.	Description
235283	NX-8	NX-8 control panel

KIT

Kit includes NX-8 panel, NX-108E LED, or NX-148E keypad, 16.5 V AC, 40 VA transformer.

Anixter No.	Vendor No.	Description
235287	NX-8-KIT	NX-8 kit with NX-108E keypad and transformer
235291	NX-848-KIT	NX-8 kit with NX-148E keypad and transformer

FASTPACK

Includes NX-8 panel, NX-1308E LED or NX-148e keypad, hardwired pet-immune motion sensor, transformer, backup battery, interior speaker, RJ block and cord.

Anixter No.	Vendor No.	Description
235286	NX-8-FP	NX-8 Fastpack with NX-1308E keypad

NX-8E Security Control Panel

GE SECURITY



The most versatile NetworX control available, expandable to 192 zones. Ideal for home automation to medium-sized commercial installations, the NX-8E is flexible enough to meet the most demanding applications.

FEATURES

- Expandable to 192 fully programmable zones
- All zones programmable as fire or burglary
- Maximum 24 keypads
- Wireless expansion up to 192 zones
- Up/downloadable with competitor lockout
- Up to eight partitions
- Maximum eight keypads per partition
- 2-wire or 4-wire smoke detectors
- Automatic arming with auto retry
- Assign zones to one or multiple partitions
- 240 four digit user codes
- Zone activity monitor
- Late-to-close / early-to-open reporting
- Built-in RS-232 serial interface for printer or direct computer connect (adapter cable needed)

CONTROL PANEL

Anixter No.	Vendor No.	Description
235292	NX-8E	NX-8E control panel

KIT

Kit includes NX-8E panel, NX-148E LCD keypad, 16.5 V AC, 50 VA transformer.

Anixter No.	Vendor No.	Description
235295	NX-848E-KIT	NX-8E kit with NX-148E keypad and transformer

FASTPACK

Includes NX-8 panel, NX-148E LCD keypad, hardwired pet-immune motion sensor, transformer, backup battery, interior speaker, RJ block and cord.

Anixter No.	Vendor No.	Description
305829	NX-848-FP	NX-8 Fastpack with NX-148E keypad

Intrusion Detection Systems

GE Security

8-zone LED Keypads

GE SECURITY

NX-108E LED KEYPAD



Original design. 4.0 in. H x 6.5 in. W x 1.3 in. D. 55-130 mA nominal current draw.

Anixter No.	Vendor No.	Description
235301	NX-108E	8-zone LED keypad

NX-1308E LED KEYPAD



Traditional design. 5.3 in. H x 6.2 in. W x 1.3 in. D. Swing-down removable door conceals controls.

Anixter No.	Vendor No.	Description
235347	NX-1308E	8-zone LED keypad

NX-1508E LED KEYPAD



Slimline design. 5.8 in. H x 3.1 in. W x 1.3 in. D. Swing-down removable door conceals controls. Includes trim piece.

Anixter No.	Vendor No.	Description
305788	NX-1508E	8-zone LED keypad

NX-1208E LED KEYPAD



5.0 in. H x 4.5 in. W x 0.9 in. D. Swing-out door conceals controls. Stay/Away/Night modes. Currently only compatible with NX-8E.

Anixter No.	Vendor No.	Description
305775	NX-1208E	8-zone LED keypad

16-zone LED Keypad

GE SECURITY

NX-1316E LED KEYPAD



Traditional design. 5.3 in. H x 6.2 in. W x 1.3 in. D. Swing-down removable door conceals controls.

Anixter No.	Vendor No.	Description
235348	NX-1316E	16-zone LED keypad

NC-116E LED KEYPAD



Original design. 4.0 in. H x 6.5 in. W x 1.3 in. D.

Anixter No.	Vendor No.	Description
235302	NX-116E	16-zone LED keypad

24-zone LED Keypad

GE SECURITY

NX-124E LED KEYPAD



Original design. 4.0 in. H x 6.5 in. W x 1.3 in. D.

Anixter No.	Vendor No.	Description
235303	NX-124E	24-zone LED keypad

NX-1324E LED KEYPAD



Traditional design. 5.3 in. H x 6.2 in. W x 1.3 in. D. Swing-down removable door conceals controls.

Anixter No.	Vendor No.	Description
236446	NX-1324E	24-zone LED keypad

192-zone Keypad

GE SECURITY

NX-1448E KEYPAD



Euro design. 192 zones. 5.2 in. H x 6.2 in. W x 1.3 in. D. Swing-down removable door conceals controls.

Anixter No.	Vendor No.	Description
305794	NX-1448E	192-zone keypad

192-zone Capable LCD Keypads

GE SECURITY

NX-148E LCD KEYPAD



75-110 mA nominal current draw, dimensions 6.2 in. W X 1.3 in. D, keypad.

Anixter No.	Vendor No.	Description
235306	NX-148E	192-zone LCD keypad
319321	NX-148E-RF	192-zone LCD keypad with 48-zone wireless receiver

NX-1248E LCD KEYPAD



Custom English language programming, adjustable backlighting, real-time clock, adjustable sounder, Stay/Away/Night mode functions.

Anixter No.	Vendor No.	Description
305778	NX-1248E	192-zone LCD keypad

NX-1192E LCD KEYPAD



Custom English language programming, Euro design, adjustable backlighting, real-time clock, adjustable sounder.

Anixter No.	Vendor No.	Description
319317	NX-1192E	192-zone LCD keypad

Intrusion Detection Systems

GE Security

Wireless Modules

GE SECURITY

FEATURES

- Expands wireless control

Anixter No.	Vendor No.	Description
235334	NX-487	Flexguard sound sensor
235333	NX-485	Pet Alley lens for NX-480, 3 pack
235331	NX-480	Indoor SAW wireless PIR motion sensor
235330	NX-475	Water-resistant pendant panic
235316	NX-450	SAW door/window transmitter
235329	NX-470	4-button SAW keychain touchpad
235312	NX-401	Wireless kit - 1-NX408E, 2-NX450, 1-NX470
235311	NX-400	Wireless kit - 1-NX408E, 2-NX450, 1-NX480
305812	NX-405	Wireless kit - 1-NX-416E, 5-NX-450 door/window sensors

NetworX GSM Receiver

GE SECURITY



The NX-591E-GSM is a self-contained GSM modem module for the NetworX control panels. It offers a secure cellular communications channel to any central station in the event of a line cut or any other interruption of land line telephone service.

FEATURES

- GSM cellular communication
- Full data reporting
- Plug-in module for NetworX panels
- Automatic weekly/daily tests and reports
- Reliable SMSXpress GSM cellular network
- Easy to install and maintain
- Web-enabled management

Anixter No.	Vendor No.	Description
357215	NX-591E-GSM	NetworX cellemetry GSM-module

NetworX PinPoint System

GE SECURITY

AP750-ID



The addressable AP750W PIR motion sensor features Adaptive Signal Processing that analyzes size, speed, shape and adaptive alarm threshold. Provides four separate curtain coverage patterns with 50 ft. range. Flat wall or corner mounting.

Anixter No.	Vendor No.	Description
305816	AP750-ID	Addressable PIR motion sensor
5845-ID		



The addressable wireless ShatterPro glassbreak sensor features Pattern Recognition Technology for superior detection and false alarm immunity. It protects all glass types up to a thickness of 1/4 in. Senses through light blinds and drapes. It has a range of 20 ft. and can be wall or ceiling mounted.

Anixter No.	Vendor No.	Description
305817	5845-ID	Glassbreak sensor

SI-ID

The addressable single input device connects a single non-addressable device to the NX-2192 interface card.

Anixter No.	Vendor No.	Description
305818	SI-ID	Single input device, addressable

4140-ID

The addressable four input, four output device allows connection of up to four non-addressable devices to the NX-2192 Interface Card. Supports four inputs and four unsupervised outputs (horns, bells, sirens, etc.)

Anixter No.	Vendor No.	Description
305819	4140-ID	Four input four output device, addressable

DesignLine Flat Wall Wireless Keypad

GE SECURITY



The GE DesignLine flat wall keypad has all the same functions of the 4-button keyfob, but easily mounts to a wall for convenience. It can arm or disarm the system, activate the police or auxiliary panic alarm and turn lights on and off.

FEATURES

- Flat wall design for a sleek, modern look
- Wireless technology for easy and cost-efficient installation
- Compatible with all GE Security 319.5 MHz control panels and receivers
- Functions at open-air distances of up to 350 ft.
- Runs on lithium coin cell battery for up to five years

Anixter No.	Vendor No.	Description
366030	TX-3030-01-1	DesignLine 4-button wall TX/RF keypad, white

PrecisionLine Series Motion Sensor

GE SECURITY



PrecisionLine dual technology motion sensors offer new, easy solutions for your most challenging residential, pet or commercial applications. Using a sophisticated combination of precision controlled microwave and passive infrared technologies, these sensors give you total Coverage-On-Demand. Sensors have four shells with varying ranges, providing options for coverage from 9-90 ft. For high-security installations that require quicker detection, radar-only mode is available except in RCR-PET.

FEATURES

- Exclusive range-control technology
- Stealth Mode mounting options

- RCR-PET ignores animals up to 80 lb.
- Form C relays and tampered units available

Anixter No.	Vendor No.	Description
300202	RCR-50	20, 30, 40 and 50 ft. range options, Form C relay, tamper
305731	RCR-PET	9, 18, 27 and 35 ft. range options, Form A relay, pet immunity to 80 lb.
305732	RCR-A	9, 18, 27 and 35 ft. range options, Form A relay
305733	RCR-C	9, 18, 27 and 35 ft. range options, Form C relay, tamper

6000 Motion Detector Series

GE SECURITY



The GE 6000 Motion Detector Series includes the PI6000 designed to meet the growing need for pet immunity in residential settings. If you have customers with small pets or rodent problems, you no longer have to mount PIRs at 3-4 feet and change to pet alley lenses. Instead, simply mount the PI6000 at standard mounting height (7-9 ft.).

The PI6000 lens design is optimized for pet immunity while the 6000 incorporates a "quick catch", high-density lens design. Both the PI6000 and 6000 feature easy-to-install housing, sealed optics, an opaque Fresnel lens and either 2- or 3-pulse mode settings. The 6000 Series provides the false alarm immunity typically seen only in much more expensive commercial PIRs.

FEATURES

- Choose from the 6000 with new high-density (HD) lens or the PI6000 with small pet and rodent immunity up to 30 lb.
- ASIC-based signal processing analyzes size, speed and shape of incoming signals
- Sealed optics prevent false alarms caused by insects getting inside detector
- Commercial performance in a residential package

Anixter No.	Vendor No.	Description
235876	PI6000	40 ft. x 40 ft. PIR with pet immunity up to 30 lb.
235872	6000	35 ft. x 35 ft. PIR, UL Residential

Intrusion Detection Systems

GE Security

Commercial Grade PIR

GE SECURITY



GE's SharpShooter passive infrared detector is an advanced PIR highly sensitive to moving infrared sources while offering increased immunity to RFI, vibration, static, stray light, rapid temperature changes and other false alarm sources.

FEATURES

- Advanced Digital Signal Processing and ASIC reduce false alarms
- Opaque Fresnel lens and custom pyro provide better detection
- High immunity to dirt, dust, bugs, temperature changes
- Flexible one- and two-zone detection
- GE PIRs average return rate over the past five years is less than 1/2 of 1 percent
- Variety of lens and mounting accessories available

Anixter No.	Vendor No.	Description
235882	6157CT-N	SPDT and cold temperature
235881	6155XT-N	Quad extended temperature
235880	6155CT-N	Sharpshooter PIR, closed loop, Form A, cold temp
235879	6157-N	Sharpshooter PIR, Form C relay, 45 ft. x 45 ft.
235878	6155-N	Sharpshooter PIR, closed loop, Form A, 45 ft. x 45 ft.

Long-range PIR Commercial Grade

GE SECURITY



The AP adaptive passive infrared detectors feature advanced optical design that provides a far larger coverage area than conventional sensors. This enables installers to use just one sensor in applications where two or more sensors are normally required. The savings in equipment, wiring and labor costs can be substantial.

FEATURES

- 12 coverage patterns include 200 ft. long range and 80 ft. wide angle in one sensor
- Microprocessor-based "4D" signal processing provides maximum immunity to false alarms

- Solid 40 ft. center curtain available with all 12 coverage patterns
- Excellent for high-security applications
- UL Approved

Anixter No.	Vendor No.	Description
235867	AP633A	Adaptive motion sensor with tamper, 200 ft. long range, 80 ft. wide angle

Ceiling-mount Commercial Grade PIRs

GE SECURITY



The AP Series ceiling-mount PIR with Dual Optic Technology (DOT) incorporates two independent pyros, two separate ASICs and two 180 degree mirror segments that provide two independent 180 degree fields of view. This design enables the detector to substantially increase the overall volume of its coverage area, providing superior detection performance and enhanced false alarm immunity.

Unlike other ceiling-mount PIRs, the AP669 patented mirror optical system yields 18 solid curtains that flood the room with detection.

FEATURES

- Dual Optic Technology (DOT)
- Two 180 degree mirror segments, two pyros and two ASICs for superior detection and enhanced false alarm immunity
- AP Series - Adaptive Passive Infrared Technology
- 60 ft. diameter 360 degree coverage
- 18 full curtains provide superior detection at all mounting heights (8-16 ft.)
- Head and base style unit adjusts 15 degrees in either direction for easier aiming
- 180 degree shunt provides flexibility to use only one-half of the unit's field of view when necessary

Anixter No.	Vendor No.	Description
235869	AP669	Commercial ceiling-mount with tamper, 60 ft. diameter, Form C

Curtain PIR Commerical Grade

GE SECURITY



The AP passive infrared detector is ideal for commercial and residential solutions when detection is as critical as preventing false alarms. For easy installation, a simple clip-on plastic mirror inserts on the AP450 to let you choose from four coverage patterns: full 90 degree, 45 degree left, 45 degree right and center curtain only.

FEATURES

- Adaptive 4D signal processing analyzes size, speed, shape and adaptive alarm threshold
- True curtain "barrier" coverage patterns
- AP450 - nine curtains, 50 ft. range at 6 ft. to 10 ft. mounting heights - Form C relay with tamper
- AP475 - one single long range curtain, 75 ft. range up to 16 ft. high - Form C relay with tamper
- Commercial solution when detection is as critical as preventing false alarms
- Ceiling-/wall-mount swivel bracket (optional): Vendor No. SB01

Anixter No.	Vendor No.	Description
305726	AP450	50 ft., nine curtain, Form C
305728	AP450A	50 ft., nine curtain, Form A
235866	AP475	75 ft., one curtain, Form C

Anti-masking PIR

GE SECURITY



GE's AP950AM sensor is a high-security sensor that provides an anti-masking feature to detect attempts at blocking its field of view.

FEATURES

- Adaptive 4D signal processing analyzes size, speed, shape and adaptive alarm threshold
- True curtain "barrier" coverage patterns
- AP950AM - nine curtains, 50 ft. range at 6 ft. to 10 ft. mounting heights
- Commercial solution when detection is as critical as preventing false alarms
- 2-in-1 high-security PIR with pet immunity also available (Vendor No. AP950PI)
- Ceiling-/wall-mount swivel bracket available (Vendor no. SB01)

Anixter No.	Vendor No.	Description
235871	AP950AM	High-security anti-masking PIR - nine curtains at 50 ft.

SharpShooter DesignLine

GE SECURITY



The GE SharpShooter DesignLine (DL) PIR motion detector is specifically designed for residential applications. The detector design is attractive and unobtrusive. The PIR is easily mounted in the corner - the preferred location for most residential applications. It can be mounted within 1/8 inch of the ceiling, from 7 ft. to 11 ft. high.

FEATURES

- Easy installation. Mounts within 1/8 in. of ceiling, from 7 ft. to 11 ft. high
- Coverage patterns included in the box: 90 degree wide angle, vertical barrier, Pet Alley
- Attractive, decorator unit complements residential decor
- Field-proven SharpShooter technology provides excellent immunity from false alarms

Anixter No.	Vendor No.	Description
240682	6351-W	35 ft. x 35 ft. standard PIR, no tamper

Industrial/Outdoor SharpShooter

GE SECURITY



The GE rugged passive infrared detector is excellent for use in many harsh environments. The unique design enables the detector to be used in applications that range from outdoors to indoor industrial plants that are exposed to water, dust, shock and severe temperatures.

The detector uses a dual pyroelectric sensor with jumper selectable one- or two-zone detections. It features a sequence processor that combines bi-directional pulse counting and Motion Verification, the most sophisticated signal processing available.

FEATURES

- UL Listed for outdoor applications
- Ultraviolet-stabilized protective lens cover
- Water-resistant, dustproof
- 40°F (-40°C) to +120°F (50°C) operating temperature

Continued on next page >>

Intrusion Detection Systems

GE Security

(continued) Industrial/Outdoor SharpShooter

- A perfect solution for warehouses, food processing plants, underground parking garages
- Die-cast aluminum housing with gasket for rugged installations
- CT Cold Temperature feature for harsh indoor or outdoor applications
- Includes standard, long-range and vertical barrier lenses

Anixter No.	Vendor No.	Description
235906	6187CTX-N	SPDT, industrial and outdoor, cold temperature

SureShot Flush Mount

GE SECURITY



The GE SureShot Series passive infrared detector is an advanced PIR designed for excellent detection while offering increased immunity to RFI, vibration, static, stray light, rapid temperature changes and other false alarm sources.

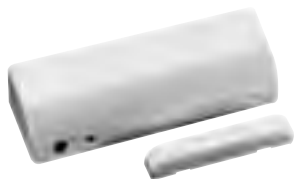
FEATURES

- Does not look like a PIR - can be mounted anywhere
- The only PIR with all these coverage patterns built-in: 360 degree ceiling mount, wide angle, Pet Alley, vertical barrier, and single-spot zone
- Easy two-step installation into a single gang box
- The only recessed PIR combining unobtrusive aesthetics with superior performance
- Comes with five coverage patterns in the box
- Easy to install, no adjustments necessary
- Remote test model available upon request

Anixter No.	Vendor No.	Description
235892	6255-W	30 ft. standard PIR
235896	6255FM-W	30 ft. flush mount PIR, single gang

ShatterPoint Acoustic Sensor

GE SECURITY



The GE Residential ShatterPoint "Tru-Dual" Transducer Sensor provides superior false alarm immunity and perimeter protection for a single point of entry such as sliding glass doors, side-light windows, kitchen windows or large picture windows up to

10 ft. (3 m) of range. The sensor mounts to any frame behind drapes and blinds, so there is no worry about shadowing the sensor. The 5620 models, with built-in reed switch, offer a perfect and economical solution for detection of all forced entries.

FEATURES

- Effective in harsh environments such as kitchens and laundry rooms - even behind drapes and blinds
- Ideal for detection on sliding glass doors, picture windows and windows that open
- Double detection - glassbreak and forced opening
- Excellent false alarm immunity
- 90 degree mounting bracket built in
- Alarm memory
- Available in wireless

Anixter No.	Vendor No.	Description
235916	5650C-W	Commercial with tamper UL
235915	5625-W	Residential with magnetic contact and tamper
235912	5600-W	Residential 10 ft. range UL

ShatterPro Wireless Acoustic Sensor

GE SECURITY



GE's Wireless ShatterPro provides excellent false alarm immunity without compromising detection. It is ideal for applications where hard-wired acoustic sensors are impractical.

The low-profile sensor housing accepts most wireless transmitters inside the back box. Each sensor also ships with a mounting bracket for larger transmitters.

FEATURES

- Compatible with virtually all wireless transmitters
- Mount transmitter inside back cover or attach sensor module to side of transmitter
- ShatterPro's Pattern Recognition Technology for superior detection and false alarm immunity
- Automatic test and end-user verification

Anixter No.	Vendor No.	Description
235934	584509-W	ShatterPro 9 V
235933	584503-W	ShatterPro 3 V
235931	564503-W	Wireless 3 V with magnetic contact

ShatterPro II Advanced Acoustic Sensor

GE SECURITY



The GE Recessed ShatterPro II is designed for use when sensor appearance is a consideration. The recessed model can be mounted directly into the wall or ceiling or can be used with the single-gang box accessory. A trim ring is included.

Using GE's patented Pattern Recognition Technology, the sensor listens for the actual pattern of breaking glass while eliminating most false alarm patterns. Recessed ShatterPro II sensors listen across the glassbreak frequency spectrum to differentiate the sound of breaking glass from most normal room sounds.

A simple hand-clap feature lets end-users confirm at any time that the Recessed ShatterPro II is operational.

FEATURES

- Recess mounts in a 1 in. (2.5 cm) hole for attractive, unobtrusive appearance
- Pattern Recognition Technology for superior detection and greater false alarm immunity
- Eliminates common false alarms by ignoring their patterns
- Suitable for use in quiet occupied areas on the perimeter loop
- Automatic test and end user verification

Anixter No.	Vendor No.	Description
235926	5822A-W	ShatterPro II, 1 in. hole with tamper, UL
235925	5820A-W	ShatterPro II, recess mounts in 1 in. hole with trim ring

ShatterPro 3 Advanced Acoustic Sensor

GE SECURITY



The GE 5812NT Series ShatterPro 3 is the latest breakthrough in GE Security's advanced series of acoustic glassbreak sensors. In lab tests, ShatterPro 3 provides better false-alarm immunity than the other popular brands. The coverage pattern can be easily adjusted to fit small or large rooms. Interference outside the range will not cause false alarms.

The ShatterPro 3 detects in a full 360 degree coverage pattern, with a maximum 25 ft. (7.5 m) radius from sensor to glass.

FEATURES

- Adjustable to room size
- All-new, easy-access design
- Designed for quiet occupied areas on the perimeter loop
- Consistent detection, even of soft, quiet glass breaks
- Detects through blinds and light drapes
- End-user can test sensor operation with a clap of the hands
- Alarm memory

Anixter No.	Vendor No.	Description
235921	R5815NT	ShatterPro 3 with tamper - round housing - Form C
235920	R5812NT	ShatterPro 3, round - round housing - Form A
235919	5815NT	ShatterPro 3 with tamper - rectangular housing - Form C
235918	5812NT	ShatterPro 3 - rectangular housing - Form A

SPRES Acoustic Glassbreak Sensor

GE SECURITY



The SPRES acoustic glassbreak sensor provides great false alarm immunity, fast installation testing and a hand-clap feature that lets end-users confirm the sensor's operational status.

Using GE Security's patented Pattern Recognition Technology, the sensor listens for actual patterns of breaking glass while eliminating most false alarm patterns. SPRES sensors listen across the glassbreak frequency spectrum for greater false alarm immunity.

FEATURES

- Pattern Recognition Technology for superior detection and false alarm immunity
- Eliminates common false alarms by ignoring their patterns
- Suitable for use in quiet occupied areas on the perimeter loop
- Automatic test and end user verifications
- Detects through blinds and light drapes

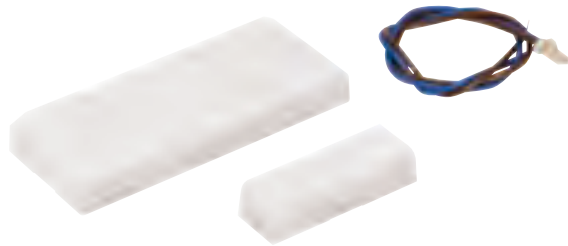
Anixter No.	Vendor No.	Description
235929	SPRES	ShatterPro Residential
235922	5812A-W	ShatterPro II, tamper/latching LED, UL
235924	5815A-W	ShatterPro II, tamper/latching LED, SPDT

Intrusion Detection Systems

GE Security

DesignLine Wireless Sensors

GE SECURITY



The GE DesignLine Slim Door/Window Sensor provides a small, wireless design for the highest level of intrusion protection with easy and cost-efficient installation. Advanced circuit technology makes this sensor extremely efficient and reliable.

FEATURES

- Low-profile design with flexible mounting configurations
- Wireless technology for easy and cost-efficient installation
- Compatible with all GE Security 319.5 MHz control panels and receivers
- Functions at open-air distances of up to 500 ft.
- Runs on lithium coin cell battery for up to five years

Anixter No.	Vendor No.	Description
366028	TX-1010-01-1	DesignLine door/window sensor, white
366029	TX-1010-01-3	DesignLine door/window sensor, brown

DesignLine Wireless Keyfob

GE SECURITY



The GE DesignLine 5-button keyfob, equipped with a bright-white LED flashlight, provides the capability to arm or disarm the system wirelessly, activate the police or auxiliary panic alarm and turn lights on and off from up to 500 feet away.

FEATURES

- Compact size with touch pad design
- Can be added to the system either as a sensor or as a wireless touch pad in a few simple steps
- Compatible with all GE Security 319.5 MHz control panels and receivers
- Functions at open-air distances of up to 500 ft.
- Runs on lithium coin cell battery for up to five years

Anixter No.	Vendor No.	Description
367601	TX-4015-01-02	DesignLine 5-button keyfob with LED flashlight, black

Hardwire Glassbreak Sensors

GE SECURITY

2000 SERIES



The 2000 series glassbreak detector features a round, low-profile design. It has a 25 ft. range and can be wall or ceiling mounted. Status and alarm LEDs are visible through the grille. 10-14 volts AC or DC.

Anixter No.	Vendor No.	Description
305840	2000	Solution 2000 glassbreak

2100 SERIES



The 2100 series glassbreak detector has a 20 ft. range and is designed to be recess-mounted in a wall or ceiling, making it ideal for flush-mount or pre-wire applications. It features alarm/status LEDs and alarm memory LED. 10-14 volts AC or DC.

Anixter No.	Vendor No.	Description
305841	2100	Solution 2100 glassbreak

2200 SERIES



The 2200 series glassbreak detector features patented, microprocessor-based 3x3 technology that will detect all glass types. It has a 20 ft. range and can be wall or ceiling mounted. It features alarm/status LEDs and alarm memory LED. 10-14 volts AC or DC.

Anixter No.	Vendor No.	Description
235356	2200	Solution 2200 glassbreak

Shock Sensor

GE SECURITY



The 5150 Shock Sensor is one of the most low-profile sensors in the industry. Advanced piezo transducer technology powers the sensor, so no power is needed from the loop. Instead, the piezo generates its own electricity when it bends as the glass breaks. Bending of the transducer must occur for the sensor to go into alarm providing excellent false alarm immunity.

FEATURES

- 10 ft. (3 m) protection on a single pane of glass
- Detects all glass types without sensitivity adjustment
- On-the-glass mounting is visible from the outside to deter potential intruders
- Field proven with over three million installations around the world
- For multiple pane windows, one sensor per pane of glass
- Direct replacement for window foil and old-style mechanical shock sensors
- Ideal for 24-hour loop protection

Anixter No.	Vendor No.	Description
340549	5150C-W	Two-wire with coil cord
319323	5150-W	Two-wire shock sensor, 10 ft. range

ATM and Vault Seismic Sensors

GE SECURITY



DV Series ATM and vault sensors are designed to detect attempts to break into vaults, safes, night deposit boxes, ATMs and other reinforced physical areas such as data storage and filing cabinets. The seismic detection system reacts to the characteristic vibration patterns of all breaking and entering tools, such as hammers, drills, diamond saws, hydraulic pressure tools and thermal tools like welding torches and thermal lances. To achieve a high level of accuracy, each sensor features three sensors in one. All three channels (counting, integration and explosion) analyze the signal frequencies, duration and amplitude in order to differentiate between random environmental disturbances and real intruder attacks. The end result is sensors with excellent detection and false alarm immunity.

FEATURES

- Detects all known methods of attack against vaults, safes, walls, ATMS and metal cabinets
- Full-scale tamper protection

- Extremely low current draw
- Adjustable sensitivity
- Compatible with virtually all conventional control units

Anixter No.	Vendor No.	Description
305734	DV1201A	Vault and safe sensor
305735	DV1221A	ATM and night deposit box sensor

Recessed Roller Plunger

GE SECURITY



The GE Recessed Roller Plunger contacts save installation time while providing reliable magnetic contact security. The contact switch is activated when the door opens, releasing the tension on the wheel plunger. Drill only one hole to mount the roller plungers; the entire magnetic contact is housed in a economical single unit. Recessed mounting hides the contact within the frame of the door it protects.

FEATURES

- Benefits of both a plunger and ball contact
- Works on all doors, including steel doors
- Reduces installation time - drill only one hole

Anixter No.	Vendor No.	Description
235965	3005-M	Recessed roller plunger

1/4 in. Recessed Contacts/Magnets

GE SECURITY



1055 Series 1/4 in. diameter switch with wire leads.

FEATURES

- Economical
- Versatile
- Attractive, added security of recessed installation

Anixter No.	Vendor No.	Description
235941	1055-N	1/2 in. gap size
235942	1055W-N	1 1/4 in. gap size

Intrusion Detection Systems

GE Security

3/8 in. Press Fit Contacts

GE SECURITY



The GE recessed press fit or flanged 3/8 in. dia. magnetic contact with wire leads uses no glue or screws to mount; small ribs on the housing hold the contact in place. Heavy-duty housing resists crushing from swelling wood.

FEATURES

- 3/8 in. press-fit mounting; no screws or glue needed
- Attractive, added security of recessed installation
- Heavy-duty housing resists crushing
- Wide gap models available

Anixter No.	Vendor No.	Description
235943	1072-N	Recessed flange - 1/2 in. gap size
319320	1075-N	Press fit - 1/2 in. gap size

3/8 in. Press Fit Stubby Contact

GE SECURITY

The GE "stubby" press fit magnetic contact is a 3/8 in. dia. switch designed specifically for applications where space is limited. The short length makes it ideal for thin-framed windows and doors where longer units cannot be used. Press fit ribs on the housing make for quick, easy installation.

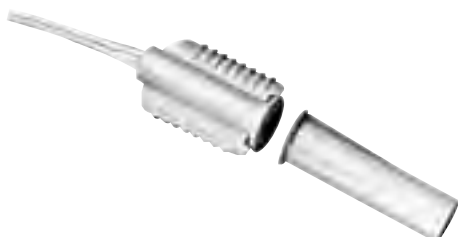
FEATURES

- Switch only 3/4 in. long; ideal for installation in thin-framed doors and windows
- Available with up to 1 in. gap distance for faster installation
- Ideal for pre-wiring; eliminates forcing switch and pre-wire into same header hole
- Wide gap model also available

Anixter No.	Vendor No.	Description
235961	1125-N	3/8 in. recessed stubby

3/8 in. Wing Fit Recessed

GE SECURITY



The GE 3/8 in. dia. recessed wing fit magnetic contact is ideal for new construction applications, where wood swell poses a potential threat to the contact housing. The "wings" flex to hold the contact securely in place as the wood expands and contracts.

FEATURES

- "Wings" protect contact reed from being crushed by swelling wood
- Installs quickly in overdrilled holes
- Superior false alarm immunity
- Wide gap models available

Anixter No.	Vendor No.	Description
240673	1275-N	3/8 in. recessed with 1/2 in. gap size
235964	1225-N	3/8 in. recessed stubby with 1/2 in. gap size

Recessed Terminal Contacts

GE SECURITY



The GE Press Fit Terminal Switch is a magnetic contact with terminal connection. Use no glue or screws to mount; small ribs on the housing hold the contact in place. Heavy-duty housing resists crushing from swelling wood. Use indoors or outdoors for an attractive recessed installation.

FEATURES

- Drastically reduces installation time
- Provides consistent connection
- Easy to install: no soldering, no squeezing and stuffing "beanies"
- Terminals accept 14-22 gauge wire

Anixter No.	Vendor No.	Description
235947	1078CT-M	3/4 in. recessed terminal
235945	1075T-N	3/8 in. recessed terminal press fit

Steel Door Contacts

GE SECURITY



The 1076 and 1078 Series Steel Door Contacts are designed specifically for use in the steel doors commonly found in commercial building applications. The unique housing design features a rugged unibody construction with flexible ribbed sides for quick, secure installation without gluing. The magnet housing isolates the magnet from the surrounding steel for maximum gap distances, both make and break. An optional Rare Earth magnet is available. It is designed for use in metal entry/exit doors with a channel in the top of the door. The magnet eliminates the need to cut a mounting hole in the door channel. The flexible magnet housing can be compressed to accommodate a variety of channel widths for quick, easy installation.

FEATURES

- 3/4 in. and 1 in. diameter for easier drilling in metal
- Self-lock mounting

- Rugged construction
- Attractive, added security of recessed installation

Anixter No.	Vendor No.	Description
235956	1076C-N	3/4 in. recessed steel door, SPDT
328341	1078C-N	3/4 in. recessed steel door
259699	1076D-N	1 in. recessed steel door, DPDT

Miniature Surface-mount

GE SECURITY



The GE Surface-mount Contact saves installation time through the use of a low profile and small footprint combine with reliable GE technology to make this series the perfect magnetic contact for those situations where drilling holes is impractical.

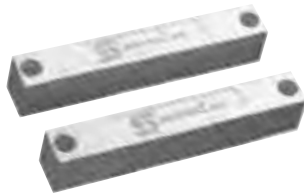
FEATURES

- Attractive, low-profile design
- Quick mounting; no screws required
- UL and ULC Listed

Anixter No.	Vendor No.	Description
235970	1145-N	Ultra mini, closed loop
235969	1035-N	Mini self-adhesive, closed loop
235968	1032-N	Mini flange mount, closed loop

Industrial Surface-mount

GE SECURITY



GE Sensors and Detectors' Industrial Surface-mount with wire leads and magnetic contacts feature a wider break distance, which permits faster installation, accommodates greater misalignment and works better on steel without time-consuming brackets. A wider break distance helps prevent false alarms caused by loose fitting doors.

FEATURES

- Models for use on steel without time-consuming brackets
- Rugged construction
- Convenient surface-mount wiring
- Mounting screws

Anixter No.	Vendor No.	Description
340550	1047T-N	Industrial surface-mount 1 1/4 in. gap
235971	1042TW-N	Plastic housing/extra wide gap series

Mini Max Rare Earth Magnetic Contacts

GE SECURITY



GE Sensors and Detectors' Rare Earth Series magnets deliver strong protection in a low-profile design - virtually eliminating the risk of window damage during installation. Just 1/8 in. thick, the magnets surface mount easily with glue, double-stick tape (included) or stainless steel screw (included).

FEATURES

- Rare Earth magnet technology delivers powerful magnetic force
- Ideal for vinyl-clad and custom windows
- Magnets mount easily with glue, double-stick tape, or stainless steel screw
- Standard gap 1/2 in., wide gap 7/8 in.

Anixter No.	Vendor No.	Description
235953	R1125-N	3/8 in. press fit stubby contact
235949	R1075-N	3/8 in. press fit contact

Industrial Overhead Door Contact

GE SECURITY



The GE Sensors and Detectors' Maxi-Gap Magnetic Contact is designed for loose or poor fitting overhead doors. The contact helps prevent or correct false alarm situations created by doors that do not line up properly, sag, or that are loose and move with wind or vibration. The channel-mount unit is equipped with the unique Maxi-Gap feature that allows a vertical gap distance of 6 in. and an overall side-to-side gap of 6 in.

FEATURES

- Optional Maxi-Gap configuration
- Ideal for poor fitting overhead doors
- Fewer false alarms
- Fewer service calls
- Reduced installation time
- Mounting hardware included

Anixter No.	Vendor No.	Description
235975	2515A-L	Maxi-Gap overhead door contact - extra wide gap

Intrusion Detection Systems

GE Security

Overhead Door Contacts

GE SECURITY



GE Sensors and Detectors' Miniature Surface Mount with Armored Cable Overhead Door Magnetic Contact is for use in rigorous environments of commercial and industrial installations. The floor-mount units are constructed with a low-profile heavy cast aluminum housing. The reed switch assembly is fully encased in GE's exclusive polyurethane potting material to prevent damage due to moisture or humidity. A wide operation gap distance of up to three inches makes installation easy and helps prevent false alarms caused by door movement or damaged and loose fitting doors.

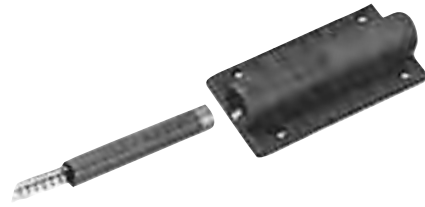
FEATURES

- Miniature, low-profile design
- Stainless steel armored cable for added security and reliability
- Wide working gap for overhead doors
- Small size less likely to be damaged by forklifts
- Aluminum bar stock resists corrosion in harsh environments
- Mounting hardware included
- Jacketed lead available

Anixter No.	Vendor No.	Description
240676	2315A-L	Overhead/panel door track mount contact - closed loop
235973	2202A-L	Overhead door floor mount contact - closed loop
235974	2205A-L	Overhead door extra-heavy-duty floor-mount contact - closed loop

Magnapull

GE SECURITY



Magnapull magnetic pull-apart cords by GE Sensors and Detectors are used to protect valuable free-standing items that are stored outdoors. The high-impact plastic housing protects the contact from corrosion or high resistance buildup.

FEATURES

- Protect boats, trailers, barbecues, heavy equipment
- Secures almost any loose item
- Surface or recessed models
- Positive magnetic retention reduces false alarms
- Reed-actuated for high reliability
- Durable, heavy gauge construction for long life
- Mounting hardware included

Anixter No.	Vendor No.	Description
240674	2105A-G	Magnapull heavy duty, closed loop
240667	1005-N	Mini Magnapull surface mount

Overhead Curtain Door Contacts

GE SECURITY



The 2302 Curtain Door Magnetic Contacts are designed specifically for curtain style overhead doors. The unique design allows the contact to be mounted directly to the channel of the door, with the magnet mounted horizontally in the door slats, off the floor and out of harm's way. The interlocking mounting bracket adjusts to fit any size channel width.

FEATURES

- Designed specifically for curtain style overhead doors
- Interlocking mounting brackets
- Magnet mounts in door channel
- Fits most door types
- Reduced installation time
- Fewer service calls
- Mounting hardware included

Anixter No.	Vendor No.	Description
320907	2304A-L	Curtain door, closed loop, 2 ft. stainless steel armored cable, SPDT

Panic Switch with Terminal

GE SECURITY



Mounted out of sight but within easy reach for manual activation, such as under desks or counters in banks, jewelry stores and other facilities where people or property are at risk. Models provide low-profile and reliable alarm protection.

FEATURES

- Easy installation
- Latching LED and non-LED models available
- Glowing LED for low light visibility models available

Anixter No.	Vendor No.	Description
240678	3040-W	Panic switch, red LED, latching circuit, open or closed electrical loop type, SPDT

Surface-mount Contact with Wire Leads

GE SECURITY



The 1038 Surface-mount Contact is designed for window and door applications where a surface-mount contact is preferred. The switch and magnet are incorporated into the cover housing. Simply mount the base plate using tape or mounting screws (provided), connect the wires and slide the cover housing until it snaps in place.

FEATURES

- Simple to install
- Attractive, low-profile design
- 1 in. gap distance

Anixter No.	Vendor No.	Description
332379	1038-N	Surface-mount with wire leads magnetic contact, closed loop, N.O. electrical configuration

Intrusion Detection Systems

Fiber SenSys

Fiber Defender - Fiber Optic Intrusion Detection Products for Perimeters

FIBER SENSYS



All-weather vibration-sensing fiber-optic sensors for both fenced and non-fenced perimeters. The FD-220P is a low-price solution for fenced perimeters while the FD-3XX and FD-5XX series offer cost-effective enhanced security for fenced as well as buried applications and on masonry and cement walls. The FD-34X series can also be used with SenSysMAT, a specially designed mat sensor that detects walking intruders in areas such as mass-transit stations, platforms, banks, museums, etc. The FD-3XX series features single- and dual-zone processors with wind-processing software and an optional anemometer (on FD-33X models) to compensate for wind noise. The FD-525 processor supports up to 25 zones, using the same sophisticated alarm and wind algorithms found in the FD-3XX series. The FD-5XX and FD-34X series offer insensitive leads for remote APU installation and can be wired with dry relay contacts (one for each zone) or networked. Networking options include XML communications protocol or Fiber SenSys fully-embedded Fiber Security Network (FSN).

FEATURES

- Sensor cable is immune to EMI, RFI and lightning
- Completely inert and intrinsically safe sensors
- Depending on alarm processor, can support up to 5 km of fiber optic sensing cable in each zone
- Depending on alarm processor, can support insensitive leads up to 20 km
- Intelligent Signal Processing
- Highly adjustable sensing parameters with automatic tuning software
- Straightforward and flexible deployment
- Form C alarm relay outputs available on all models
- FD-3XX and FD-5XX series RoHS compliant
- Cable, conduit, tools and accessories are also available

Anixter No.	Vendor No.	Description
339251	980-51523	FD220-P standalone APU for fence line applications only
334626	980-01507	FD208R remote alarm processor with rack-mounting capability
339256	980-01474	FD331 standalone APU, single-channel
339258	980-21454	FD332 standalone APU, dual-channel
339262	980-01485	FD341 standalone APU, single-channel, remote capability
339265	980-91494	FD342 standalone APU, dual-channel, remote capability
421075	980-72758	FD-525 standalone APU, 25-channel, remote capability
421076	980-02739	FD-525R rack-mounted APU, 25-channel, remote capability
421080	980-22895	FD-348R remote alarm processor with rack-mounting capability

SecurLAN - Fiber Optic Intrusion Detection Products for Data Networks

FIBER SENSYS



SecurLAN is a physical intrusion detection system designed to protect network data cables from physical tampering. SecurLAN offers a cost-effective alternative to data encryption and Intrusion Detection Optical Communications Systems (IDOCs) - ideal in areas that cannot be visually monitored but require protection at all times. SecurLAN uses existing network infrastructure, requiring minimal cost to install and operate.

FEATURES

- Remote detection capability
- Sensor cable is immune to EMI, RFI and lightning
- Armored and/or alarmed cables are available in a variety of multimode and single-mode strand counts
- Completely inert and intrinsically safe sensors
- Detection zones up to 5 km in length
- Insensitive leads up to 20 km in length
- Intelligent Signal Processing
- Standalone or optional rack-mount APU configuration
- RS-232 communications
- Cable, conduit, tools, optical cutoff switches and other accessories are also available
- Armored and/or alarmed cables are available in a variety of multimode and single-mode strand counts

Anixter No.	Vendor No.	Description
334626	980-01507	FD208R remote alarm processor with rack-mounting capability
339274	SL-ACPS	Remote AC power switch
421080	980-22895	FD-348R remote alarm processor with rack-mounting capability

Cable, Conduit and Accessories for Fiber Defender and SecurLAN Systems

FIBER SENSYS



A wide variety of cables, conduit, accessories and installation tools are available. SenSysMAT is a mat sensor designed for floors.

FEATURES

- Additional SenSysMAT configurations are available
- RK-348 rack-mountable insert, with built-in power supply, for FD-348R and FD-208R
- Fiber Commander control software for viewing/managing zones and alarms
- AutoTune - software that delivers expert tuning capabilities for the FD208R, FD-3XX and FD-5XX APUs
- SpectraView software offers a graphical user interface (GUI) for Fiber Defender and SecurLAN systems - allowing users to record sensor cable data files, view sensor cable data in real time, retrieve spectral history records and change parameter settings. Includes Modeler, a feature that offers the ability to predict sensor behavior at various parameter settings
- Hyperion Hand-Held Calibrator is built on a Windows Mobile platform with calibration software that can interface through the RS-232 port of an APU. The calibration software provides the same functionality as SpectraView, except for the Modeler function. A RS-232 cable and a standard USB cable are included
- Conduit standard colors are gray, black and white. Custom colors are available
- Conduit is also available in 5/8 in. diameter - in both split and non-split kits of 100 m
- Additional cables are available for installations requiring alarmed and/or armored features
- Connectors, couplers, encapsulation kits, and bundles of stainless steel wire ties are available

Anixter No.	Vendor No.	Description
339277	AN-200	Fiber Defender anemometer with 15 m of input cable
339278	HYPERION	Hyperion Pocket PC hand-held calibrator
334631	SPECTRAVIEW	Spectraview full version calibration software
339279	EZ400NSS	Non-split conduit kit, 100 m of 1/2 in. conduit, one barrel coupler, one box coupler, 500 ties
339281	EZ-370	Metal wire twist tool
323406	SC-3	3 mm sensor cable (per meter)
339282	SC-3R	2 km continuous reel of SC-3 cable
323407	IC-3	3 mm insensitive cable (per meter)
339283	IC-3R	2 km continuous reel of IC-3 cable
421083	RK-348	Rack-mountable insert, with power supply

Fiber Defender Multi-point Location Detection Products

FIBER SENSYS



The Fiber Defender FD-5XX Alarm Processing Unit (APU) is a state-of-the-art sensor that uses time-domain multiplexing to control/monitor up to 25 fully independent zones. By dividing the perimeter into many zones (using one or more FD-5XX processors) the user can know the location of intruders. The zones are fully independent, making the system extremely difficult to defeat. Even if one zone is cut all the other zones are unaffected, and continue to monitor for multiple intruders; no amount of noise saturation (from, for example, accomplices working together) on one zone can mask intrusion attempts on any other zone. The FD-5XX can be installed with some zones on a fence, and other zones buried in the ground or on brick/masonry walls, making this the most flexible and secure multizone sensor on the market.

FEATURES

- A single alarm processing unit (APU) protects up to 3 km of perimeter with up to 25 zones
- Zones may be less than a meter long, or as long as 500 meters
- Each zone is fully independently tunable using advance digital signal processing algorithms
- Unmatched probability of detection and immunity to nuisance alarms
- Compatible with AutoTune for automatic tuning of alarm parameters
- APU can be remotely located up to 5 km from perimeter
- CE and RoHS compliant
- APU available in either rack-mounted or standalone versions
- Alarm output via relays (requires relay/LED modules) or IP/XML interface (standard)

Anixter No.	Vendor No.	Description
394218	980-82758	FD525 standalone APU
394219	980-32478	FD525R rack-mounted APU
394220	980-32335	RLM-525 relay output module for the FD525R
394221	980-42336	OM-525 relay/LED module for FD525

Intrusion Detection Systems

Optex

Wireless-ready Outdoor Motion Detector With Anti-masking

OPTEX



FEATURES

- 40 ft. x 50 ft., 85° wide coverage 8.3 ft. - 10 ft. mounting height
- Works with most manufacturers' wireless systems
- Intelligent and logic (upper and lower detection areas have to be activated in order to generate an alarm condition)
- Dual signal processing circuit
- Summer night compensation logic
- Advanced temperature compensation logic
- Vegetation sway analysis logic
- Patented double conductive shielding ideal detection area setting
- Adjustable detection length
- Spot area flexible masking
- 180 degree angle adjustable bracket/hood digital anti-masking function

Anixter No.	Vendor No.	Description
422047	HX-40RAM	40 ft. x 50 ft. wireless-ready outdoor motion detector with anti-masking

IP-based Class One Laser Detector

OPTEX



FEATURES

- Vertical and horizontal mounting
- 50 ft. high vertical mount IP integration
- Unique detection algorithm
- Four independently adjustable detection areas for PTZ camera control
- Four independent N.O. outputs
- Form C master alarm output
- Easy installation
- Automatic area setting function
- Environmental disqualification circuit
- Anti-rotation function and anti-masking function
- Fog cancelation algorithm
- Trouble output and tamper output

Anixter No.	Vendor No.	Description
422051	RLS-3060	IP-based Class 1 Laser Detector that creates a virtual wall for high-security applications

Wide and Mid-range Outdoor Motion Detectors

OPTEX



FEATURES

- Detection of ambient temperature and illuminance for automatic sensitivity management
- Advanced detection algorithm
- Double dual/one quad pry-elements with patented double conductive shielding for main area
- Built-in double dual pyro-elements
- Anti-vandalism functions
- Anti-rotation function with 3-axis accelerometer
- Anti-masking function with photobeam
- Reinforced polycarbonate housing
- Maximum 13 ft. installation height
- Independent sensitivity selector for creep/near/far areas
- Two times N.C. and N.O. independent output for main areas (near and far areas)
- Adjustable alarm interval time

Anixter No.	Vendor No.	Description
422059	SIP-5030	Wide-range outdoor motion detector to trigger CCTV systems
425251	SIP-3020	Mid-range outdoor motion detector to trigger CCTV systems
425252	SIP-4010	Mid-range outdoor motion detector to trigger CCTV systems
425253	SIP-404	Mid-range outdoor motion detector to trigger CCTV systems

Long-range Outdoor Motion Detector

OPTEX



FEATURES

- Detection of ambient temperature and illuminance for automatic sensitivity management
- Advanced detection algorithm
- Double dual/one quad pyro-elements with patented double conductive shielding for main area
- Built-in double dual pyro-elements
- Anti-vandalism functions
- Anti-rotation function with 3-axis accelerometer
- Anti-masking function with photobeam
- Reinforced polycarbonate housing
- Maximum 13 ft. installation height independent sensitivity selector for creep/near/far areas

Anixter No.	Vendor No.	Description
422061	SIP-100	Long-range outdoor motion detector to trigger CCTV systems

Accessories For Outdoor Motion Detectors

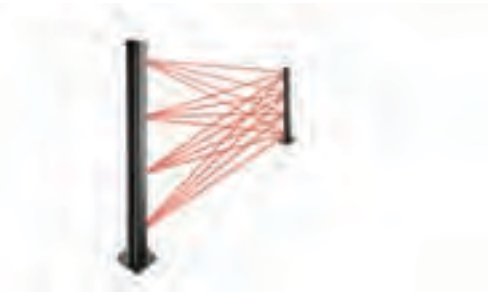
OPTEX

These products are recommended to be added to the Optex outdoor motion detector series.

Anixter No.	Vendor No.	Description
425254	SIP-HU	Heating unit for the outdoor motion detector
425255	MIDIHOOD	Snow/sun shield for SIP-5030 and SIP-100
425256	MINIHOOD	Snow/sun shield for SIP-3020, SIP-4010 and SIP-404
425257	AVF-1	Area view finder for the outdoor motion detector
425258	OPM-WT	Walk tester for the outdoor motion detector

16 Beam System Between Two Towers

OPTEX



FEATURES

- Sixteen active beams
- Graded alarm response
- No hardwire synchronization
- Integral head heaters
- Modular system design
- Field adjustable detection levels
- Up to 495 ft. outdoor range
- Alignment tester included
- Fog detection circuitry

Anixter No.	Vendor No.	Description
422064	REDNET	16 beam system between two towers creates a virtual net for high-security applications

Wireless-ready Outdoor Dual Motion Detector

OPTEX



FEATURES

- 40 ft. x 40 ft. detection pattern
- 2.7 ft. - 4 ft. mounting height
- Two detection zones that must be compromised simultaneously for superior stability
- Adjustable detection range function
- Size judging function
- Patented double conductive shielding
- Sensitivity selection switch
- Temperature compensation
- Selectable NC or NO alarm output

Anixter No.	Vendor No.	Description
422066	VX-402R	Wireless-ready outdoor dual motion detector

Intrusion Detection Systems

Optex

Wireless-ready Outdoor Dual Motion Detector For Immediate Perimeters

OPTEX



FEATURES

- 80 ft. x 3 ft. (40 ft. out of both sides)
- Unique dual-side detection area of the BX-80N can protect both sides of windows when placed between them
- Two detection zones that must be compromised simultaneously for superior stability
- Double conductive shielding
- Easy installation
- Audible alarm function
- Adjustable detection range function
- Size judging function

Anixter No.	Vendor No.	Description
422067	BX-80NR	Wireless-ready outdoor dual motion detector for immediate perimeters

Photobeam Detectors

OPTEX



Short- to long-range photobeam detectors for barrier and perimeter applications.

FEATURES

- 4-channel selectable frequencies for stacking applications (TF Models)
- Automatic gain control maintains proper signal strength
- Lightning surge protection
- 99 percent beam blocking rate for stable operation in harsh weather
- DQ circuit sends trouble signal when beam strength is below acceptable level (TF Models)

Anixter No.	Vendor No.	Description
425259	AX-70TN	70 ft. photobeam detector
425265	AX-130TN	130 ft. photobeam detector
425260	AX-100TF	100 ft. photobeam detector
425266	AX-200TF	200 ft. photobeam detector
425261	AX-250PLUS	250 ft. photobeam detector
425267	AX-500PLUS	500 ft. photobeam detector
425263	AX-350TF	350 ft. photobeam detector
425268	AX-650TF	650 ft. photobeam detector