

CommScope In-Building Wireless (IBW) Solutions

COMMSCOPE ENTERPRISE SOLUTIONS



CommScope's IBW Solutions includes repeaters (or bi-directional amplifiers) and distributed antenna system (DAS) infrastructure. All of CommScope's products are modulation agnostic and broadband, ensuring a future-proof solution.

ION-B Indoor Distributed Antenna Systems

COMMSCOPE-ANDREW SOLUTIONS



Anixter No.	Vendor No.	Description	Anixter No.	Vendor No.	Description
457688	TFAH-US7B-14	ION-B Remote 700/800/850/900/1700/1900/ 2600 MHz, VAC	427158	TPOI85/17/19E	TPOI Module, Active, 850/1700/1900 MHz
427147	TFAH70/80-14	ION-B Remote 700 PS/800 PS MHz, VAC	457695	TPOI7/17	TPOI Module 700/1700 MHz
427148	TFAN50-14	ION-B Remote 450 MHz, VAC	427323	TPOI-P70/80/92	TPOI Module Passive, 700/800/900 MHz
427160	TPRN14	ION-B Subrack 19 in. X 4HE, VAC	427324	TPOI-P80/92/19E	TPOI Module Passive, 800/900/1900 MHz
427163	TSUN4	ION-B Supervision, 4HEX14TE	427325	TPOI-P85/17/19E	TPOI Module Passive, 850/1700/1900 MHz
427151	TFLN2504/4	ION-B Master Optical Tx/Rx, 680-2700 MHz	457693	TLCN2-W	ION-B 2-way Splitter, 350-2700 MHz
427152	TFLN4004/4	ION-B Master Optical Tx/Rx, 350-450 MHz	457694	TLCN4-W	ION-B 4-way Splitter, 350-2700 MHz
427157	TPOI80/92/19E	TPOI Module, Active, 800/900/1900 MHz	427155	TLCN8-W	ION-B 8-way Splitter, 350-2700 MHz
			427150	TBP74	ION-B Blank Panel, 4HE
			427156	TML006	Termination, 50 ohm, SMA
			427164	TIL-US1-HLW	ION-B Interconnect Link, 1 fiber, 700/800/850/900/ 1700/1900 MHz

CommScope - Andrew

Node A RF Enhancers

COMMSCOPE-ANDREW SOLUTIONS



Anixter No.	Vendor No.	Description
427120	7561392-0018	Node A4 Subrack, V AC, no combiner
497246	7577532-00	AF 727, 700 MHz (commercial), 27 dBm
497247	7598983-00	AF 737, 700 MHz (commercial), 37 dBm
497248	7577534-00	AF 7037, 700 MHz (public safety), 37 dBm
497250	7577538-00	AF 8037, 806-824/851-869 MHz, 37 dBm
497251	7577546-00	AF 9037, 896-902/935-941 MHz, 37 dBm
497252	7577540-00	AF 8527, 824-849/869-894 MHz, 27 dBm
497253	7577542-00	AF 8537, 824-849/869-894 MHz, 37 dBm
497254	7577552-00	AF 1927, 1850-1915/ 1930-1995 MHz, 27 dBm
497255	7577554-00	AF 1937, 1850-1915/ 1930-1995 MHz, 37 dBm
497256	7577548-00	AF 1727, 1710-1755/ 2110-2155 MHz, 27 dBm
497257	7577550-00	AF 1737, 1710-1755/ 2110-2155 MHz, 37 dBm
427131	7574285-00	Dummy Module
427137	7574290	1-way Combiner (350-3500 MHz)
427138	7577517	2-way Combiner (350-960/1710-2170 MHz)
427174	7580274-00	2-way Combiner (758-824/851-869 MHz)
427136	7574288	4-way Combiner (806-869/896-941/1850-1995 MHz)
427175	7606983	4-way Combiner (698-787/824-894/ 1710-1755/1850-1990 MHz)
427176	7605086	USB/Ethernet Adapter (LAN)
427140	7597821	Wall Mounting Kit Node A4 Indoors
427139	7597820	Wall Mounting Kit Node A4 Outdoors
427141	7597825	Pole Mounting Kit Node A4 Outdoors

i-POI Intelligent Point of Interface

COMMSCOPE-ANDREW SOLUTIONS



The CommScope Intelligent Point of Interface (i-POI) offers a combination of intelligence, simplicity and compact size that takes the guesswork and expense out of base transceiver station (BTS) commissioning and maintenance.

The i-POI is a revolutionary interface solution that incorporates BTS conditioning, signal combining, splitting, power management, monitoring, E911 support and various test options into a single, streamlined component.

Featuring an innovative linear design, the i-POI delivers high quality of service with minimal signal degradation, while also simplifying troubleshooting and reducing field service costs. It minimizes the passive intermodulation (PIM) problems often associated with typical BTS-to-DAS interface implementations, and it also offers the ability to monitor and control BTS conditioning both on-site using a front-panel color display, and remotely through network management systems such as AIMOS or SNMP traps.

By combining multiple functions within a single unit, the i-POI reduces installation space requirements by up to 75 percent. That allows more space for other essential components, while offering plug-and-play installation, without the need for splitters, couplers and terminators.

Compatible with multiple wireless technologies including GSM, CDMA, UMTS and LTE, the CommScope i-POI was developed in conjunction with major wireless operators around the world, specifically to solve the challenges facing DAS engineers and operators. It has universal application with all distributed antenna systems, and it works particularly well when incorporated into CommScope ION-M and ION-B systems.

FEATURES

- Two low PIM BTS interfaces
- Support of duplexed and nonduplexed signal and uplink diversity
- Software controlled leveling within a 60 dB range in steps of 0.5 dB
- Programmable, downlink automatic level control (ALC) for power control
- Power level alarms that monitor the BTS connection including input and output RSSI
- Built-in signal generator used to commission and troubleshoot
- E911 interface
- Integrated color display for local control

Anixter No.	Vendor No.	Description
500734	I-POI 17-U	ION Active Intelligent Point of Interface, AWS band, UMTS
500736	I-POI 17/17	ION Active Intelligent Point of Interface, AWS band, LTE MIMO
500740	I-POI 19-G	ION Active Intelligent Point of Interface, PCS 1900 band, GSM
500739	I-POI 19-U	ION Active Intelligent Point of Interface, PCS 1900 band, UMTS
500741	I-POI 7/7	ION Active Intelligent Point of Interface, Cellular 700 band, LTE MIMO

CommScope - Andrew

Anixter No.	Vendor No.	Description
500742	I-POI 80-U	ION Active Intelligent Point of Interface, LMP 800 band, UMTS
500743	I-POI 85-G	ION Active Intelligent Point of Interface, Cellular 850 band, GSM
500744	I-POI 85-U	ION Active Intelligent Point of Interface, Cellular 850 band, UMTS
500745	I-POI 90-U	ION Active Intelligent Point of Interface, LMR 900 band, UMTS
500746	7641375-00	ION Standard Interface Card for Active Intelligent Point of Interface
500752	7641374-00	ION Web Server Interface Card for Active Intelligent Point of Interface

In-building Wireless Accessories

COMMSCOPE-ANDREW SOLUTIONS

COAXIAL CABLE - BULK, HELIAX

Anixter No.	Vendor No.	Description
419943	AL4RPV-50	1/2 in. air dielectric, plenum, aluminum corrugated
430847	LDF4RK-50A	1/2 in. 50 ohm foam dielectric, riser, copper corrugated
427134	FXL-540-NHR	1/2 in. foam dielectric, riser, aluminum smoothwall
427318	HL4RP-50A	1/2 in. air dielectric, plenum, copper corrugated
427100	FXL-780-NHR	7/8 in. foam dielectric, riser, aluminum smoothwall

COAXIAL CABLE - 1,000 FT. REELS, HELIAX

Anixter No.	Vendor No.	Description
463223	AL4RPV-50-1000	1/2 in. air dielectric, plenum, aluminum corrugated
497237	LDF4RK-50A-1000	1/2 in. foam dielectric, riser, copper corrugated
497238	FXL-540-NHR-1000	1/2 in. foam dielectric, riser, aluminum smoothwall
497239	HL4RP-50A-1000	1/2 in. air dielectric, plenum, copper corrugated

COAXIAL CABLE CONNECTORS, 1/2 IN. AND 7/8 IN. CABLE

Anixter No.	Vendor No.	Description
419945	L4TNM-PSA	Type N male positive stop for AL4RPV50, LDF4RK-50A, HL4RP-50A
427096	78EZDF	7-16 DIN N female EZfit for 7/8 in. FXL780
427201	540EZNMV2	Type N male EZfit for 1/2 in. FXL540
427202	540EZNVF2	Type N female EZfit for 1/2 in. FXL540
427200	78EZNM	Type N male EZfit for 7/8 in. FXL780

Anixter No.	Vendor No.	Description
427098	78EZNF	Type N female EZfit for 7/8 in. FXL780
427097	78EZDM	7-16 DIN male EZfit for 7/8 in. FXL780
427196	L4TNF-PSA	Type N female positive stop for AL4RPV50, LDF4RK-50A, HL4RP-50A

CABLE PREPARATION TOOLS, 1/2 IN. CABLE

Anixter No.	Vendor No.	Description
426642	CPT-12U	EASIAx Plus Automated Prep Tool for AL4RPV50, LDF4RK-50A, HL4RP-50A
427183	CPT-BK12U	Replacement Blade Kit for CPT-12U Cable Preparation Tool
MCPT-L4	MCPT-L4	EASIAx Manual Prep Tool for AL4RPV50, LDF4RK-50A, HL4RP-50A
MCPT-BK4	MCPT-BK4	Replacement Blade Kit for MCPT-L4 Cable Preparation Tool
427132	540-EZPT	EZfit Automated Cable Preparation Tool for FXL540
427171	EZPT-BKU540	Replacement Blade Kit for 540-EZPT Cable Preparation Tool
438627	12-HPT	EZfit Manual Cable Preparation Tool for FXL540
497240	HPT-BK1278	Replacement Blade Kit for 78-HPT Cable Preparation Tool
427135	TW-12-EZFC	Torque Wrench for Front Clamping Nut on 1/2 in. EZfit connectors
427327	TW-12-EZV2	Torque Wrench for Rear Clamping Nut on 1/2 in. EZfit connectors

CABLE PREPARATION TOOLS, 7/8 IN. CABLE

Anixter No.	Vendor No.	Description
427095	780-EZPT	EZfit Automated Cable Preparation Tool for FXL-780 coaxial cable
427184	EZPT-BKU780	Replacement Blade Kit for 780-EZPT Cable Preparation Tool
427313	78-HPT	EZfit Manual Cable Preparation Tool for 7/8 in. coaxial cable
497240	HPT-BK1278	Replacement Blade Kit for 78-HPT Cable Preparation Tool
427179	TW-78-EZFC	Torque Wrench for 7/8 in. EZfit connectors

1/2 IN. CORRUGATED GROUNDING KIT

Anixter No.	Vendor No.	Description
427109	CSGL4-15B4	Compact SureGround Grounding Kit for 1/2 in. corrugated coaxial cable

Continued on next page >>

CommScope - Andrew

(continued) In-building Wireless Accessories

WIRED FOR WIRELESS WALL ORGANIZER

Anixter No.	Vendor No.	Description
426640	760138610	Wired for Wireless Wall Organizer

CELLMAX ANTENNAS

698-960 / 1710-2700 MHz

Anixter No.	Vendor No.	Description
419941	CELLMAX-O-CPUSE	Omni indoor antenna
419940	CELLMAX-D-CPUSE	Directional in-building antenna
465149	CELLMAX-EXT-CPUSE	Directional outdoor antenna

LOW-POWER SPLITTERS, TYPE N CONNECTORS

698-2700 MHz

Anixter No.	Vendor No.	Description
427111	S-2-CPUSE-L-N	2-way low power splitter
427112	S-3-CPUSE-L-N	3-way low power splitter
427113	S-4-CPUSE-L-N	4-way low power splitter

HIGH-POWER REACTIVE SPLITTERS, TYPE N CONNECTORS

Anixter No.	Vendor No.	Description
S-2-CPUSE-H-N	S-2-CPUSE-H-N	2-way, 698-2700 MHz
S-2-TCPUSE-H-N	S-2-TCPUSE-H-N	2-way, 380-2700 MHz
S-3-CPUSE-H-N	S-3-CPUSE-H-N	3-way, 698-2700 MHz
S-3-TCPUSE-H-N	S-3-TCPUSE-H-N	3-way, 380-2700 MHz
S-4-CPUSE-H-N	S-4-CPUSE-H-N	4-way, 698-2700 MHz
S-4-TCPUSE-H-N	S-4-TCPUSE-H-N	4-way, 380-2700 MHz

HIGH-POWER REACTIVE SPLITTERS, 7-16 DIN CONNECTORS

Anixter No.	Vendor No.	Description
S-2-CPUSE-H-D	S-2-CPUSE-H-D	2-way, 698-2700 MHz
S-2-TCPUSE-H-D	S-2-TCPUSE-H-D	2-way, 380-2700 MHz
S-3-CPUSE-H-D	S-3-CPUSE-H-D	3-way, 698-2700 MHz
S-3-TCPUSE-H-D	S-3-TCPUSE-H-D	3-way, 380-2700 MHz
S-4-CPUSE-H-D	S-4-CPUSE-H-D	4-way, 698-2700 MHz
S-4-TCPUSE-H-D	S-4-TCPUSE-H-D	4-way, 380-2700 MHz

HYBRID COUPLERS, TYPE N CONNECTORS

Anixter No.	Vendor No.	Description
H-3-CPUSE-N-A	H-3-CPUSE-N-A	3 dB, 698-2700 MHz
427110	H-3-TC-N	3 dB, 300-960 MHz
H-4X4-CPU-N	H-4X4-CPU-N	4 x 4 matrix, 800-2200 MHz

DIRECTIONAL COUPLERS, TYPE N CONNECTORS

Anixter No.	Vendor No.	Description
427104	C-6-CPUSE-N	6 dB, 698-2700 MHz
427105	C-6-TCPUSE-N	6 dB, 380-2700 MHz
427314	C-10-CPUSE-N	10 dB, 698-2700 MHz
427102	C-10-TCPUSE-N	10 dB, 380-2700 MHz
427172	C-15-CPUSE-N	15 dB, 698-2700 MHz
427315	C-15-TCPUSE-N	15 dB, 380-2700 MHz
427103	C-20-TCPUSE-N	20 dB, 380-2700 MHz
C-30-CPUSE-N	C-30-CPUSE-N	30 dB, 698-2700 MHz
C-30-TCPUSE-N	C-30-TCPUSE-N	30 dB, 380-2700 MHz

50 OHM TERMINATIONS

Anixter No.	Vendor No.	Description
427116	T-2-NF	2 watt, Type N female
427117	T-2-NM	2 watt, Type N male
427114	T-10-NF	10 watt, Type N female
427115	T-10-NM	10 watt, Type N male
427118	T-25-NF	25 watt, Type N female
427119	T-25-NM	25 watt, Type N male
T-25-DF	T-25-DF	25 watt, 7-16 DIN Female
T-25-DM	T-25-DM	25 watt, 7-16 DIN male

FIBER AND JUMPERS

Anixter No.	Vendor No.	Description
370-COMOS2-TBD-06	P-006-DS-8W-FSUYL	Plenum distribution cable, 6-fiber single unit
370-COMOS2-TBA-06	P-006-DZ-8W-FSUYL	Plenum distribution cable, interlocking aluminum armored with plenum jacket, 6-fiber single unit
370-COMOS2-TBD-12	P-012-DS-8W-FSUYL	Plenum distribution cable, 12-fiber single unit
370-COMOS2-TBA-12	P-012-DZ-8W-FSUYL	Plenum distribution cable, interlocking aluminum armored with plenum jacket, 12-fiber single unit

FIBER AND JUMPER MODULES

Anixter No.	Vendor No.	Description
353266	SME-4-G2	360 SME-4-G2, surface-mount enclosure, four modules
390394	360G2-1U-MOD-SD	360G2 Sliding 1U Shelf, accepts four 360DM/360DP/360G2 Cartridges
390393	360G2-1U-MOD-FX	360G2 Fixed 1U Shelf, accepts four 360DM/360DP/360G2 Cartridges
390402	360G2-2U-MOD-SD	360G2 Sliding 2U Shelf, accepts eight 360DM/360DP/360G2 Cartridges
390401	360G2-2U-MOD-FX	360G2 Fixed 2U Shelf, accepts eight 360DM/360DP/360G2 Cartridges
390409	360G2-4U-MOD-SD	360G2 Sliding 4U Shelf, accepts 12 360DM/360DP/360G2 Cartridges
390408	360G2-4U-MOD-FX	360G2 Fixed 4U Shelf, accepts 12 360DM/360DP/360G2 Cartridges
431280	360G2-4U-MOD-FX-16	360G2 Fixed 4U Shelf, accepts 16 360DM/360DP/360G2 Cartridges

CommScope - Andrew

FIBER MODULES, DRUM AND SPLICE TRAYS

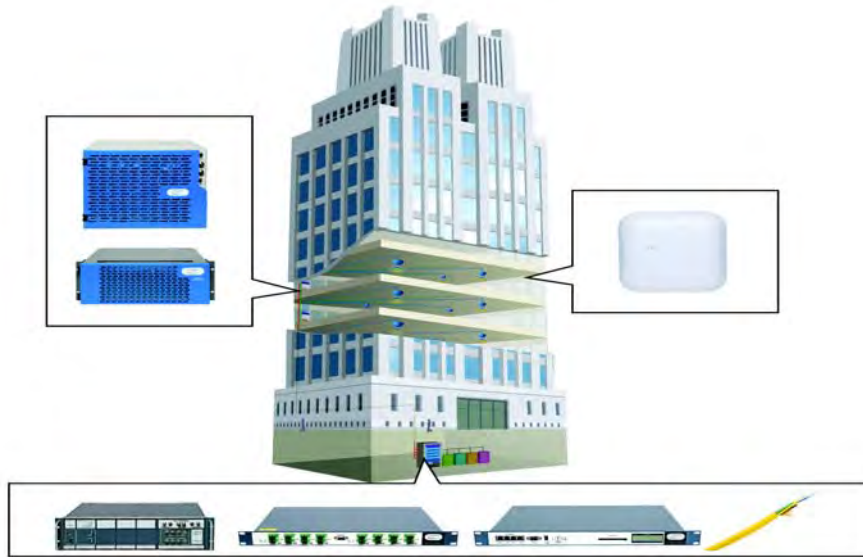
Anixter No.	Vendor No.	Description
396708	360G2CARTRIDGE6S CASMGRPIGTAILA	360G2 Cartridge six SC Angled TeraSPEED, green with pigtails A
396685	360DP-6SCA-SM	360DP-6SCA-SM, Distribution Panel six SC Angled TeraSPEED, green
329094	G2-FIBER DRUM KIT	G2-Fiber Drum Kit, fiber drums for 1U and 2U shelves
310187	RS-2AF-16SF	RS-2AF-16SF, RoloSplice Kit with two fusion splice trays
310329	RS-4AF-16SF	RS-4AF-16SF, RoloSplice Kit with four fusion splice trays
288172	SW-6AF-16SF	SW-6AF-16SF, Splice Wallet Kit with six fusion splice trays

CommScope has a comprehensive product portfolio of passive and active components for its solution. For additional information, please contact your local sales representative.

Corning MobileAccess

Corning MobileAccess Solutions

CORNING CABLE SYSTEMS



Improve coverage and capacity in your enterprise:

Corning MobileAccess solutions provide a wired path for delivering RF signals indoors - in offices, basements, hallways, and wherever end users work, live and play - providing consistent and constant wireless connectivity and performance.

Guests, clients and employees rely on smartphones and tablets to stay connected. Wireless coverage doesn't just happen. The inside of your building can be a dead zone when it comes to reliable cellular radio frequency (RF) reception. To ensure five-bar wireless coverage and robust mobile data throughput, IT managers deploy Corning MobileAccess in-building coverage and capacity solutions which provide a dedicated cellular voice and data network indoors.

The Corning MobileAccess advantage:

Corning MobileAccess' portfolio of in-building wireless infrastructure solutions offers built-in RF intelligence and flexible architectures to fit every facility, large or small. Corning's enterprise-ready DAS solutions make it simple to enable a wide variety of operator services, including 2G, 3G and 4G cellular voice and data services for any device. Their operator-approved solutions provide maximum flexibility with either a broadband, multi-operator pay-as-you-grow option (neutral host) or a single-operator option using existing LAN cabling.

Corning MobileAccess

MobileAccessVE

CORNING CABLE SYSTEMS



Innovative cellular-over-LAN architecture re-uses your existing LAN cabling plant (Cat 5e/6) to offer a simple, cost-effective cellular coverage and capacity enhancement to your LAN, in half the time as conventional solutions with minimal workplace disruption. Cabling re-use also ensures less disruption and complexity associated with new cabling projects and this approach significantly reduces time to deployment for both 4G overlay deployments and other types of installations.

MobileAccessVE delivers cellular services using intermediate frequencies (IF) of a different frequency than the Ethernet LAN traffic, therefore cellular network elements do not steal LAN capacity and if one network is down, it does not affect the other.

MobileAccessVE network elements are transparent to the IT LAN because MobileAccessVE delivers licensed RF using intermediate frequencies (IF) of a different frequency than the Ethernet LAN traffic (0 to 100 MHz), sharing only the physical cabling and enabling separate PoE pass-through for any IP application.

MobileAccessVE is the first and only DAS to be validated with the Cisco Unified Wireless Network.

The MobileAccessVE in-building cellular platform offers 14 dBm composite power output (10 dBm CELL) for single and dual-band RF service mixes including: CELL/PCS (full-band, with and without amplifier sharing options), 700 MHz LTE MIMO and AWS MIMO, with MIMO delivery over one, existing Cat 5e/6/7 LAN cable through the use of IF frequencies.

FEATURES

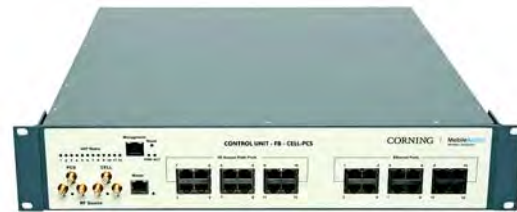
- Fastest, IT-friendly cellular enhancement
 - MobileAccessVE is a single-/dual-operator RF-over-LAN solution, enabling: CELL/PCS, AWS MIMO and/or 700 MHz LTE MIMO using existing Cat 5e/6 for cellular signal delivery
 - Co-existence of cellular RF signals and Ethernet eliminates new cabling requirements for DAS
 - Installed in weeks vs. months
 - Simple and familiar management GUI
 - Works with any operator's RF source
 - Offers operator-grade, cost-effective 4G MIMO deployment for the cost of SISO, by using existing cabling for the DAS 'overlay' for MIMO delivery (offers two built-in antennas within one pod and different intermediate frequency transport of two MIMO RF streams over one cable, eliminating the need for separate, new cabling for MIMO antenna technology enablement).

- Cost effective
 - Most cost-effective indoor upgrade path for 4G overlay service
 - Wi-Fi compatible cellular with existing cabling
 - Add cellular to your 802.11n upgrade instantly 100 percent transparent to your WLAN
 - Looks and feels just like Wi-Fi
 - Converged network
 - 100 percent transparent to the LAN while reusing existing LAN cabling for cellular signal delivery
- Scalable and modular
 - Scales cost effectively, allowing customers to choose where new services are activated, over the existing LAN

Contact your local sales representative for more information.

DAS Equipment Headend and Remotes - VE Control Unit (VCU)

CORNING CABLE SYSTEMS



The VCU interfaces with the service provider's RF capacity source (ex. BTS, BDA, Pico cell, Femtocell) and VE Access Pods via Cat 5e/6 cabling. MobileAccessVE Control Units interface with operators' RF capacity sources and VE Access Pods. The VE Control Unit downbands RF services to intermediate frequencies (IF bands) and allows the LAN signal and LAN-based PoE to passively pass-through from the IT patch panel through the Cat 5e/6 LAN cabling together, to VE Access Pods (antennas on ceilings). The VE Control Unit provides separate PoE and management for Pods. VE Pods transmit and receive RF services, and allow LAN signals to pass through to any IP appliances such as WLAN Access Points attached to VE Pods.

Anixter No.	Vendor No.	Description
455032	VCU-AWS-MIMO-12E	VE Control Unit for AWS 2x2 MIMO, 12 ports, shared Cat 5e
455034	VCU-CELL-PCS-12E	VE Control Unit for dual-band CELL/PCS bands, 12 ports, shared Cat 5e
455035	VCU-FB-CELL-PCS-12E	VE Control Unit for dual-band supporting full band CELL/PCS, 12 ports, shared Cat 5e
455038	VCU-MB-LTE700-12E	VE Control Unit for mixed-band LTE 700 MHz lower ABC or upper C block 2x2 MIMO, 12 ports, shared Cat 5e

In-building Wireless

Corning MobileAccess

Element Management System (EMS) and SC-450 Controller

CORNING CABLE SYSTEMS



All system elements and connections can be remotely visible, controlled, and diagnosed in real-time via direct connection or remote TCP/IP network connection and SNMP traps.

Anixter No.	Vendor No.	Description
455047	SC-450	MobileAccess System Controller

Optional FT350 Fiber Transport Solution

CORNING CABLE SYSTEMS

The wideband FT350 solution extends in-building service coverage by using existing fiber infrastructure in large public venues and campuses and a single-capacity source to service multiple buildings. By converting RF signals into RF-optical signals, frequencies can be transported across longer distances (up to 2 km) using low-loss MMF/SMF. The FT350 solution extends a single-capacity source to service multiple buildings, up to 2 km from the centralized source to remotes with point-to-multipoint RF using existing fiber optic cabling (SMF/SMF).

Contact your local sales representative for more information.

Optical Hubs

CORNING CABLE SYSTEMS

OPTICAL CENTRAL HUB (OCH)



Single wideband fiber RF distribution controller connected to up to four capacity sources, providing the RF-to-optical signal conversion at a centralized point, to/from multiple remotes located in remote locations. Options include a 4-port SISO or 8-port SISO/MIMO configuration for quad-band services.

Anixter No.	Vendor No.	Description
454987	OCH-4-SMF	Optical Central Hub for SISO services, supporting four SISO ORUs, SMF
454991	OCH-8-SMF	Optical Central Hub for SISO or MIMO Services, supporting eight SISO ORUs or four MIMO ORUs, SMF

Anixter No.	Vendor No.	Description
493213	OCH-GX-4-XR	Optical Central Hub for GX, supporting extended range up to 20 km, supporting four SISO GX units, SMF (WDM)
493214	OCH-GX-8-XR	Optical Central Hub for SISO or MIMO GX services supporting eight SISO GX Units or four MIMO SMF (WDM)

OPTICAL REMOTE HUB (ORUS)



Fiber remote units tied to the OCH are connected to Master VCUs and provide RF service connectivity to VE platforms.

Anixter No.	Vendor No.	Description
454997	ORU-SISO-SMF	Optical Remote Unit for SISO services, U.S. bands (CELL, PCS, AWS, LTE), SMF
455001	ORU-MIMO-SMF	Optical Remote Unit for MIMO services, U.S. bands (CELL, PCS, AWS, LTE), SMF

MobileAccess2000

CORNING CABLE SYSTEMS

Advanced multi-operator, multi-frequency (400 MHz to 6 GHz) Wire-It-Once architecture that offers maximum scalability with modular upgrades and maximum flexibility. The solution accommodates multiple operator requirements across a single converged network and distributes RF services via a fiber backbone over common set of coaxial cables and antennas.

FEATURES

- Accommodates the maximum number of operators and services
 - Supports a wide range of RF bands: 400 MHz to 6 GHz covered including: CELL, PCS, Public Safety, AWS, 700 MHz LTE, paging, WMTS for GSM, LTE, UMTS, DCS, CDMA and optional Wi-Fi RF support
 - Ideal for mobile voice or data with capable upgrade 4G MIMO and SISO options
- Simplified upgrades and additions
 - Single integrated cellular antenna network for all operators provides modular additions in IDFs over one antenna grid, minimizes equipment footprint and simplifies upgrades and operator on-boarding
- Proactive end-to-end system monitoring
 - Fully integrated with wireless operator NOC and includes automatic alarming, built-in interference mitigation and signal grooming
- Simplified maintenance and management
 - Active network elements located in accessible IDF/Telco closets allow for effortless service additions and maintenance without downtime or disruption
- Advanced cabling saves time and money

Corning MobileAccess

Common DAS Equipment Headend

CORNING CABLE SYSTEMS

A single DAS equipment headend delivers scalable and cost-effective RF coverage and capacity. The Corning MobileAccess common equipment headend leverages point-to-multipoint DAS architecture, connecting to one or more operator capacity sources such as BTSs (base transceiver stations) and BDAs (bi-directional amplifiers). At the common headend, radio frequency (RF) signals are converted from RF electrical to RF optical for distribution to multiple remote locations or 'remote ends' using low-loss, broadband fiber cabling (SMF/MMF). The modular Corning MobileAccess headend architecture enables phased system commissioning, operator on-boarding and sectorization planning for future capacity upgrades, while allowing separate visibility and control of RF spectrum for each operator in multi-operator deployments. Intelligent signal handling and low-loss elements ensure operator-grade performance. Customers can leverage a single headend with any number and types of Corning MobileAccess remotes (standard, medium, high power) for full design flexibility that fits virtually any venue's topology. The common headend also offers dedicated, plug-and-play RF conditioning modules and optional cost savings with amplifier sharing for multiple operators.

Contact your local representative for more information and complete solution details.

End-to-end Element Management System (SC-450)

CORNING CABLE SYSTEMS



The SC-450 enables remote and local management and offers centralized monitoring via an integrated Web GUI and SNMP. The SC-450 maximizes system uptime by locating faults in real time and allowing users to change individual RF parameters including modulation.

Anixter No.	Vendor No.	Description
455047	SC-450	MobileAccess System Controller

Remote Interface Unit (RIU)

CORNING CABLE SYSTEMS



The RIU conditions the RF downlink (DL) signals from an operator's signal source (BTS or BDA) located inside the building. The RIU then custom tunes incoming signals in order to ensure a constant level of RF before signals are passed to/from the Base Unit (BU). RF uplink (UL) signals from subscribers' phones are received from the BU and

transported back to the operator's signal source (BTS or BDA) and to the operator's macro network outdoors.

The quad-band Radio Interface Unit (RIU-4) adjusts RF signal source inputs, with service-specific conditioning cards and sends signals to a wideband Base Unit (BU-4, BU-8) where RF-electrical-to/from-optical conversion is performed before RF signals are transported to multiple remotes (up to eight per BU) using low-loss fiber (SMF/MMF). Each RIU includes a frequency combiner which supports optional amplifier sharing for each capacity source and RIUs support 4x BU-4s and 2x BU-8s (expansion kit available).

RIU-4/RIU-3

CORNING CABLE SYSTEMS



The RIU-4 unit can support up to four cellular services (RIU-IM supports three) in a stand-alone mode, whereas additional different services/bands (up to six) can be supported when two units are connected in a master/slave configuration.

Anixter No.	Vendor No.	Description
455007	RIU-4	Radio Interface Unit, supporting one to four conditioners

RIU-IM

CORNING CABLE SYSTEMS



The RIU-IM unit can support up to three cellular services in a stand-alone mode. Master/slave configuration.

Anixter No.	Vendor No.	Description
454886	RIU-IM	Radio Interface Unit Chassis

Corning MobileAccess

BDAC and BTSC

CORNING CABLE SYSTEMS



RIUs are loaded with service-specific RF conditioning cards.

Anixter No.	Vendor No.	Description
455009	RIU-BDAC-AWS	AWS Conditioner for RIU Chassis, -16 to +10 dBm input range
455010	RIU-BDAC-CELL	CELL Conditioner for RIU Chassis, -16 to +10 dBm input range
455011	RIU-BDAC-G-PCS	PCS with G block support conditioner for RIU Chassis, -16 to +10 dBm input range
455012	RIU-BDAC-IDEN	IDEN/800 MHz Public Safety/800 MHz SMR Conditioner for RIU Chassis, -16 to +10 dBm input range
455013	RIU-BDAC-PS700	700 MHz Public Safety Conditioner for RIU Chassis, -16 to +10 dBm input range
455014	RIU-BDAC-SMR	900 MHz SMR/Paging Conditioner for RIU Chassis, -16 to +10 dBm input range
455015	RIU-BTSC-700LTE	BTS/BDA Conditioner for LTE 700 MHz service 0 to +40 dBm input levels for RIU Chassis
455017	RIU-BTSC-AWS	AWS Conditioner for RIU Chassis, +10 to +36 dBm input range
455018	RIU-BTSC-CELL	CELL Conditioner for RIU Chassis, +10 to +36 dBm input range
455019	RIU-BTSC-G-PCS	PCS with G block support Conditioner for RIU Chassis, +10 to +36 dBm input range
455020	RIU-BTSC-IDEN	IDEN/800 MHz Public Safety/800 MHz SMR Conditioner for RIU Chassis, +10 to +36 dBm input range
455022	RIU-BTSC-PS700	700 MHz Public Safety Conditioner for RIU Chassis, +10 to +36 dBm input range
455023	RIU-BTSC-SMR	900 MHz SMR/Paging Conditioner for RIU Chassis, +10 to +36 dBm input range

Base Units (BU)

CORNING CABLE SYSTEMS

The wideband Base Units perform RF-electrical-to/from-optical conversion between the Radio Interface Unit and the remote units, so that RF services can be transported to/from remotes using optical fiber cabling. The BU converts signals to/from RF optical/RF electrical before RF signals are transported to/from multiple remotes (up to eight per BU) using low-loss fiber (SMF/MMF).

4-PORT BASE UNIT - B4U



Supports up to four optical connections between the RIU and the remote modules.

Anixter No.	Vendor No.	Description
455040	WB-B4U	Wideband Base, four unit supporting four RHUs

8-PORT BASE UNIT - B8U



Supports up to eight optical connections between the RIU and the remote modules.

Anixter No.	Vendor No.	Description
455041	WB-B8U	Wideband Base, eight unit supporting eight RHUs

MA330 Campus Links

CORNING CABLE SYSTEMS

MA330 campus fiber link units enable campus connectivity with scalable point-to-multipoint RF distribution of operators' centralized capacity sources (i.e. BTS or base transceiver station) over WDM using low-loss fiber connections for up to a 20 km radius. The solution consists of the 330 Main and 330 Remote units.

330 MAIN



This unit performs the RF to optical conversion on the BTS side and transmits the signals over fiber to the remote locations where 330 Remote Units are installed.

Corning MobileAccess

Anixter No.	Vendor No.	Description
455056	330-MB-1	Main building unit supporting one link
455058	330-MB-2	Main building unit supporting two links

330 REMOTE



This unit performs the optical to RF conversion at the remote locations and distributes the signals to the connected Base Units.

Anixter No.	Vendor No.	Description
455057	330-EXP-BOX	Expansion box for remote building - supporting additional two Base Units
493172	330-RB-1	Remote building unit one link supporting two Base Units

DAS Remote Equipment

CORNING CABLE SYSTEMS

The common DAS headend works with any combination of remotes connected to/from antennas. Optimize designs with efficient remote power. Preconfigured, modular DAS remotes simplify commissioning and minimize upgrade costs. Get the most out of DAS designs and performance with: standard, medium and high RF power, indoor and outdoor remotes. Optimizes RF performance and costs with standard low-, medium- and high-power remotes indoors or outdoors to meet any requirement. All remotes offer automatic RF grooming, interference mitigation and filter technology to ensure operator-grade performance.

STANDARD LOW-POWER REMOTES MA2000 QSX



Preconfigured MA2000 QSX and TSX remote modules offer 400 MHz to 6 GHz band coverage with 20 dBm power for three (TSX) and up to four (QSX) services including: CELL/PCS, AWS and 700 MHz LTE. Remote units support for RF services over a common fiber/coax antenna infrastructure, reduce equipment footprint, minimize antennas required and eliminates power-waste. These low-power remotes also prevent capacity drain in multi-sector designs, resulting from soft hand-over (SHO) issues.

Anixter No.	Vendor No.	Description
454657	2000-C85P19L70A17-A-TC	MA2000 QSX quad-service CELL/PCS, 700 MHz LTE and AWS in a TC enclosure
454679	2000-C85P19L70A17-A-TCF	MA2000 QSX quad-service CELL/PCS, 700 MHz LTE and AWS in a TC enclosure with filter for 700/800 MHz PS coexistence

STANDARD LOW-POWER REMOTES MA2000 QSX



Anixter No.	Vendor No.	Description
454655	2000-C85P19A17-A-TC	MA2000 TSX tri-service CELL/PCS and AWS
454656	2000-C85P19-A-TC	MA2000 TSX dual-service CELL/PCS
454684	2000-C85P19L70-A-TC-F	MA2000 TSX tri-service CELL/PCS and 700 MHz LTE with filter to support 700/800 MHz PS coexistence

MEDIUM-POWER REMOTE MOBILEACCESS HX INDOOR UNIT



Higher-power 2 W indoor MIMO and outdoor SISO MobileAccessHX remotes are designed to economize antenna grids and cover larger floor plans, facilities with limited IDF space, and topologies requiring longer horizontal cabling runs from remotes to antennas.

Anixter No.	Vendor No.	Description
454974	HX-C85P19L70A17-AC-A	MobileAccessHX quad-service indoor CELL, PCS, AWS, and 700 MHz LTE solution supporting local AC power, SMF and MMF
454975	HX-C85P19L70A17-DC-A	MobileAccessHX quad-service indoor CELL, PCS, AWS, and 700 MHz LTE solution supporting remote DC power, SMF and MMF

Continued on next page >>

In-building Wireless

Corning MobileAccess

(continued) DAS Remote Equipment

MEDIUM-POWER REMOTE MOBILEACCESS HX OUTDOOR UNIT



The MobileAccessHX Outdoor Unit supports four services in a single enclosure. It is NEMA IP65 rated, eliminating the need for another separate sealed enclosure. The outdoor unit is available in a SISO configuration. MIMO can be supported by combining two outdoor units.

Anixter No.	Vendor No.	Description
493201	HX-C85P19L70A17-AC-B	MobileAccessHX quad-service outdoor CELL, PCS, LTE, and AWS solution supporting local AC power, SMF and MMF
493202	HX-C85P19L70A17-DC-B	MobileAccessHX quad-service outdoor CELL, PCS, LTE, and AWS solution supporting remote DC power, SMF and MMF

HIGH-POWER REMOTES



High-power 20 W and 40 W MobileAccessGX remotes cover large, open outdoor topologies adjacent to indoor spaces. These remotes are designed to cost-effectively extend operator macro-networks outdoors, add capacity to complement indoor RF traffic offload, and avoid costly macro builds where possible.

Anixter No.	Vendor No.	Description
493196	GX-C85L70A17-40	MobileAccessGX 40 W remote for CELL/700 MHz LTE/AWS with NEMA enclosure, single-fiber support
493197	GX-P19L70A17-40	MobileAccessGX 40 W remote for PCS/700 MHz LTE/AWS with NEMA enclosure, single-fiber support
493198	HX-C85G91D18U21-AC-A	Accessory filter

Contact your local sales representative for information on configurations.

Service Combiner Unit (SCU)

CORNING CABLE SYSTEMS

The Service Combiner Unit is a passive module that combines up eight to 16 RF streams and distributes the UL and DL signals from the M2000 remotes to/from a common broadband antenna network.

4-PORT SERVICE COMBINER UNIT (SCU-4)



Anixter No.	Vendor No.	Description
454800	SCU-4	MA2000 passive Service Combiner Unit with support for four ANT, four HB and four LB connections. To be used with the MA2000 TSX/QSX

8-PORT SERVICE COMBINER UNIT (SCU-8)

Anixter No.	Vendor No.	Description
454802	SCU-8	MA2000 passive Service Combiner Unit with support for eight ANT, eight HB and eight LB connections. To be used with MA2000

MobileAccess Accessories

CORNING CABLE SYSTEMS

Other third-party components required for installation and operation of MobileAccess2000 remotes includes 1/2 in. plenum-rated coaxial cabling and broadband antennas.

Anixter No.	Vendor No.	Description
454967	ANTM-600-6G-OMN	MobileAccess wideband antenna for 600-2,500 CP; 5,100-6,000 VP

Optimize Deployments with Advanced Cabling Solutions

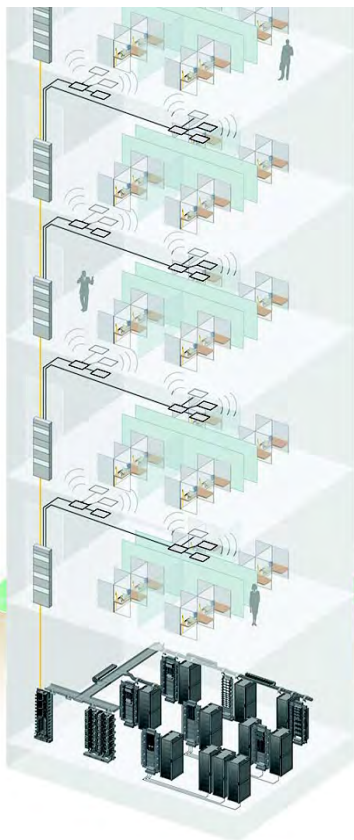
Leverage advanced cabling where and when you need it to reduce DAS installation time by up to 70 percent*. Corning MobileAccess offers complete end-to-end solutions for DAS, meeting current and future requirements with the flexibility of fiber. Corning Advanced Cabling Solutions provide industry-leading, bendable fiber optics as well as a variety of connection options, including Plug & Play Universal Systems and stubbed hardware. Intelligent cabling solutions such as Plug & Play preterminated and stubbed hardware reduce installation time and costs.

Contact your local sales representative for more information.

*MMF and SMF supported versions. Additional products and RF combinations are available, contact us for details.

InterReach Wireless Solution

TE CONNECTIVITY



- Distributed amplifier system, ensuring high performance and uniform output power at every antenna point
- High-output power, provides greater coverage area per antenna
- Zero-loss system, making design simple and guaranteeing consistent coverage from every antenna
- Economical installation thanks to use of CATV cabling
- Double-star architecture makes installation and future expansion quick and nondisruptive for campuses or large venues
- Integrated Web-based administrative and maintenance tools
- Individual band shutdown or lockout provides flexible RF performance adjustments via administrative tools
- Integrated SNMP capability allows use of standard network management packages
- FCC, UL and CE Mark approved

Contact your local sales representative for more information.

InterReach Unison

TE CONNECTIVITY



HUBS AND REMOTE ACCESS UNITS

Anixter No.	Vendor No.	Description
417263	UNS-1-MH-2	Unison Main Hub
417264	UNS-CS75-MH-2	Unison Main Hub - 750 MHz (Upper C)
417265	UNS-PS-MH-2	Unison Main Hub - Public Safety
417267	UNS-EH-2	Unison Expansion Hub
417268	UNS-CELL-1	Unison 800 MHz Cellular Remote Access Unit
417270	UNS-IDEN-1	Unison 800 MHz iDEN Remote Access Unit
417272	UNS-GSM-1	Unison 900 MHz GSM/EGSM/iDEN Remote Access Unit
417280	UNS-PCS-2	Unison 1900 MHz PCS (35 MHz) Remote Access Unit
417282	UNS-UMTS-2	Unison 2.1 GHz UMTS Remote Access Unit
417283	UNS-AWS-1	Unison 1.7 GHz/2.1 GHz AWS Remote Access Unit
417284	UNS-CS75-1	Unison 750 MHz (Upper C) Remote Access Unit
417285	UNS-PS70-1	Unison 700 MHz RAU - Public Safety
417287	UNS-EX170-1	Unison Cat 5/6 Extender

TE Connectivity's InterReach Wireless Solution has two components: InterReach Fusion and InterReach Spectrum.

InterReach Fusion is a multiband solution that enables any organization to implement in-building wireless coverage and capacity for in-dense, high-traffic environments such as enterprises, convention centers, sport arenas and airports. Integrated Web-based administrative, maintenance tools and diagnostic tools are included.

InterReach Spectrum is used to extend wireless services throughout a building, multiple buildings or campus. It is used in the market for addressing coverage and capacity needs for current and emerging wireless networks. It provides edge-to-edge bandwidth and multiband flexibility. Spectrum also offers element management that includes on-site or remote accessible system alarming and management of network elements and the cable infrastructure. Spectrum is a scalable platform that allows for easy system growth in size and scope of solution, whether the system needs to scale to reach new service areas inside of buildings or add bandwidth and capacity as necessary. Spectrum can be designed to suit properties of any size and/or shape property. The Expansion Units may be cascaded to provide overall system growth. If your property or wireless needs change, the system can change with you.

FEATURES

- Delivers wireless voice and high-speed data
- True multiband system using a single set of electronics/cabling
- Supports frequencies from 700 MHz to 2.7 GHz
- Dedicated capacity per band, easily supports dense user environments

Continued on next page >>

TE Connectivity

(continued) InterReach Unison

INTERREACH UNISON ACCEL		
Anixter No.	Vendor No.	Description
417448	UNS-ACCEL-1	Unison Accel Hub
417449	UNS-4P-ACCEL-1	Unison Accel 4-port Hub
INTERREACH UNISON ACCESSORIES		
Anixter No.	Vendor No.	Description
417445	UNS-BAND-1	Program the Main Hub for one additional Unison band at time of manufacturing
417446	UNS-BAND-2	Program the Main Hub that is already in the field for one additional Unison band

InterReach Fusion

TE CONNECTIVITY



INTERREACH FUSION WIDEBAND SINGLESTAR FOR 800/850/1900		
Anixter No.	Vendor No.	Description
417461	FSN-1-MH-1	Fusion Main Hub
417505	FSN-1-MHDC-1	Fusion Main Hub - DC Input Power
417509	FSN-EH-2	Fusion Expansion Hub
417510	FSN-EHDC-2	Fusion Expansion Hub - DC Input Power
417511	FSN-8519-1	Fusion 850/1900 MHz Multiband RAU
417513	FSN-809019-2	Fusion 800/900 SMR/1900 MHz Multiband RAU

INTERREACH FUSION FOR 700/850/1900		
Anixter No.	Vendor No.	Description
499696	FSN-2-MH-2	Fusion Main Hub For 700/850/1900
499697	FSN-2-MHDC-2	Fusion Main Hub - DC Input Power
417509	FSN-EH-2	Fusion Expansion Hub
417510	FSN-EHDC-2	Fusion Expansion Hub - DC Input Power
499700	FSN-2-708519-1	Fusion 700ABC/850/1900 Multiband RAU
457849	FSN-2-758519-1	Fusion 700UC/850/1900 Multiband RAU
499833	FSN-2-708519-1-HP	Fusion 700ABC/850/1900 HP Multiband RAU
503415	FSN-2-758519-1-HP	Fusion 700UC/850/1900 HP Multiband RAU

INTERREACH FUSION WIDEBAND FOR 1900/AWS		
Anixter No.	Vendor No.	Description
417515	FSN-W1-MH-2	Fusion Wideband Main Hub for 1900/AWS
499703	FSN-W1-MHDC-2	Fusion Wideband Main Hub - DC input power
417516	FSN-W1-EH-2	Fusion Wideband Expansion Hub
457852	FSN-W1-EHDC-2	Fusion Wideband Expansion Hub - DC input
417517	FSN-W1-1921-1	Fusion Wideband 1900/AWS Multiband RAU

INTERREACH FUSION WIDEBAND FOR 800/850/1900		
Anixter No.	Vendor No.	Description
417518	FSN-W2-MH-1	Fusion Wideband Main Hub for 800/850/1900 Triband
457850	FSN-W2-MHDC-1	Fusion Wideband Main Hub - DC input power
417516	FSN-W1-EH-2	Fusion Wideband Expansion Hub
457852	FSN-W1-EHDC-2	Fusion Wideband Expansion Hub - DC input
417520	FSN-W2-808519-1	Fusion Wideband 800/850/1900 MHz Multiband RAU

INTERREACH FUSION WIDEBAND FOR 700/AWS SISO, 700 (UPPER C) MIMO AND 700 (LOWER ABC) MIMO		
Anixter No.	Vendor No.	Description
457853	FSN-W2-MH-3	Fusion Wideband Main Hub for 700/AWS SISO - 700 (Upper C) MIMO, and 700 (Lower ABC) MIMO
457854	FSN-W2-MHDC-3	Fusion Wideband Main Hub - DC Input Power
417516	FSN-W1-EH-2	Fusion Wideband Expansion Hub
457852	FSN-W1-EHDC-2	Fusion Wideband Expansion Hub - DC input
417523	FSN-W2-7021-1	Fusion Wideband 700/AWS SISO Multiband RAU
457855	FSN-W2-7070-1	Fusion Wideband 700 (Lower ABC) MIMO RAU
417524	FSN-W2-7575-1	Fusion Wideband 700 (Upper C) MIMO RAU

INTERREACH FUSION FOR 700/AWS/AWS		
Anixter No.	Vendor No.	Description
499719	FSN-W4-MH-1	Fusion Wideband Main Hub for 700/AWS/AWS
417516	FSN-W1-EH-2	Fusion Wideband Expansion Hub
499832	FSN-W4-702121-1-HP	Fusion Wideband 700 ABC/AWS HP/AWS HP
503417	FSN-W4-752121-1-HP	Fusion Wideband 700 UC/AWS HP/AWS HP

TE Connectivity

INTERREACH FUSION SINGLESTAR FOR 850/1900 AND 800/900/1900

Anixter No.	Vendor No.	Description
417532	FSN-1-SS-2	Fusion Singlestar Hub
457856	FSN-1-SS-1P	Fusion Singlestar Hub for 800/900/1900 Tri-band
417511	FSN-8519-1	Fusion 850/1900 MHz Multiband RAU
417513	FSN-809019-2	Fusion 800/900 SMR/1900 MHz Multiband RAU

INTERREACH FUSION SINGLESTAR 700/850/1900

Anixter No.	Vendor No.	Description
499729	FSN-2-SS-2-1P	Fusion SingleStar Hub for 700/850/1900
499700	FSN-2-708519-1	Fusion 700ABC/850/1900 Multiband RAU
457849	FSN-2-758519-1	Fusion 700UC/850/1900 Multiband RAU
499833	FSN-2-708519-1-HP	Fusion 700ABC/850/1900 HP Multiband RAU
503415	FSN-2-758519-1-HP	Fusion 700UC/850/1900 HP Multiband RAU

INTERREACH FUSION WIDEBAND SINGLESTAR

Anixter No.	Vendor No.	Description
417535	FSN-W2-SS-1P	Fusion Wideband SingleStar Hub for 800/850/1900 Tri-band
417520	FSN-W2-808519-1	Fusion Wideband 800/850/1900 MHz Multiband RAU

SPECTRUM/PRISM HOST UNIT

TE CONNECTIVITY

HOST DART

Anixter No.	Vendor No.	Description
457857	FWP-00000HUII	HOST UNIT, SERF II, HST SYS II, PS, FAN
457858	FWU-40000HUDART	HOST DART, SMR 800
457859	FWU-50000HUDART	HOST DART, SMR 900
457860	FWU-20000HUDART	HOST DART, CELL 850
457861	FWU-86000HUDART	HOST DART, PCS 1900 SGL SD
457862	FWU-A6000HUDART	HOST DART, AWS 2100 SGL SD
457863	FWU-L6000HUDART	HOST DART, 700 Lower ABC SGL SD
457864	FWU-U6000HUDART	HOST DART, 700 Upper C SGL SD

DART REMOTE UNIT

Anixter No.	Vendor No.	Description
457865	SPT-0000DRUII	DRU, SERF II, RMT SYS II, PS, FAN
457866	SPT-000800SMRIFD	IF DART, 800 SMR Path 1
457867	SPT-000900SMRIFD	IF DART, 900 SMR Path 1
457868	SPT-000000850IFD	IF DART, 850 MHz Path 1
457869	SPT-000001900IFD	IF DART, 1900 MHz Path 1
499834	SPT-2100AWSP1IFD	IF DART, 2100 MHz AWS Path 1
457871	SPT-00700UCP1IFD	IF DART, 700 Upper C, Path 1
457872	SPT-00700UCP2IFD	IF DART, 700 Upper C, Path 2
457873	SPT-700LABCP1IFD	IF DART, 700 Lower ABC, Path 1

Anixter No.	Vendor No.	Description
457874	SPT-700LABCP2IFD	IF DART, 700 Lower ABC, Path 2
499835	SPT-0000850P2IFD	IF DART, 850 MHz Path 2
499836	SPT-0001900P2IFD	IF DART, 1900 MHz Path 2
499837	SPT-0800SMRP2IFD	IF DART, 800 MHz Path 2
499838	SPT-2100AWSP2IFD	IF DART, 2100 MHz AWS Path 2

SPECTRUM IF EXPANSION UNIT

Anixter No.	Vendor No.	Description
457875	SPT-00000IFEU-1	SPECTRUM IF Expansion Unit: IFFWD, IFREV, IFMICRO

STANDARD RAUs

Anixter No.	Vendor No.	Description
457876	SPT-M1-8519-1	SPECTRUM, 850 p1-1900 p1 Main RAU
457877	SPT-S1-7070-1-MIMO	SPECTRUM, 700 MIMO Secondary RAU, Upper C-lower ABC
499760	SPT-M1-AWS19-11	1900 p1-AWS p1 Main RAU
457880	SPT-S1-8090-1	SPECTRUM, 800 p1-900 p1 SMR Secondary RAU
457881	SPT-S1-80AWS-1	SPECTRUM, 800 p1 SMR-2100 p1 AWS Secondary RAU
499763	SPT-S1-AWS19-12	1900 p2-AWS p1 Secondary RAU
499839	SPT-S2-70AWS-22- SISO	700 p2 UC/LABC SISO-AWS p2 Secondary RAU
499765	SPT-S1-8519-22	850 p2-1900 p2 Secondary RAU
499840	SPT-S1-2121-1-MIMO	AWS MIMO Secondary RAU
503418	SPT-S1-8019-22	800 p2-1900 p2 Secondary RAU
499841	SPT-S2-70AWS-1- SISO	700 p1 UC/LABC SISO-AWS p1 secondary RAU

HIGH-POWER RAUs

Anixter No.	Vendor No.	Description
499842	SPT-M3-8519-11-HP	850 p1-1900 HP p1 Main RAU
499843	SPT-S3-70AWS-11- HP	700 p1 uC/LABC SISO-AWS HP p1 Secondary RAU
499844	SPT-S3-70AWS-22- HP	700 p2 uC/LABC SISO-AWS HP p2 Secondary RAU
499845	SPT-S3-8519-22-HP	850 p2-1900 HP p2 Secondary RAU

ACCESSORIES

Anixter No.	Vendor No.	Description
499773	SPT-2400ACDC-1	2,400 watt AC power supply: two 1,200 W modules
499774	FWU-SMHU1550XVR	HOST UNIT, 26 dB OPTICS, 1550 nm, standard
499775	FWU-SMRU1310XVR	Remote Unit, 26 dB OPTICS, 1310 nm, standard
499776	FWP-SMIR1310XVR	Host and Remote Unit, 13 dB OPTICS, 1310 nm, standard
499777	300479-0	Cable, QMA RA to QMA RA 2 ft.
499778	300469-0	Cable, RG-6 F male to F male 6 ft.
499779	300469-1	Cable, RG-6 F male to F male 20 ft.

Continued on next page >>

TE Connectivity

(continued) SPECTRUM/PRISM HOST UNIT

Anixter No.	Vendor No.	Description
499780	FOA-INLC015	In-Line attenuator SM LC 15 dB
499781	4214-0727	698-2690 MHz 3-port omni antenna

PRISM REMOTE CHASSIS

Anixter No.	Vendor No.	Description
499846	FP1-10000002121RU	PRISM, single-band, remote chassis DIV/MIMO, pass-through
499847	FP2-10000002121RU	PRISM, dual-band, remote chassis DIV/MIMO, pass-through
499848	FP3-10000002121RU	PRISM, tri-band, remote chassis DIV/MIMO, pass-through
499849	FP4-10000002121RU	PRISM, quad-band, remote chassis, DIV/MIMO, pass-through
499850	FP1-10000002111RU	PRISM, single-band, remote chassis DIV/MIMO, ProAx
499851	FP2-10000002111RU	PRISM, dual-band, remote chassis DIV/MIMO, ProAx
499852	FP3-10000002111RU	PRISM, tri-band, remote chassis DIV/MIMO, ProAx
499853	FP4-10000002111RU	PRISM, quad-band, remote chassis DIV/MIMO, ProAx

PRISM RF MODULE

Anixter No.	Vendor No.	Description
499790	FWP-4210000MOD	PRISM, 800 iDEN, 6.5 W module, non-diversity, classic
499791	FWP-8416000MOD	PRISM, PCS, 20 W module, non-diversity, SGL SD
499792	FWP-841S000MOD	PRISM, PCS, 20 W module, non-diversity, DL SD
499793	FWP-A416000MOD	PRISM, AWS, 20 W module, non-diversity SGL SD
499794	FWP-A41S000MOD	PRISM, AWS, 20 W module, non-diversity DL SD
499795	FWP-B410000MOD	PRISM, 850 wideband cell, 20 W module, non-diversity, classic
499796	FWP-B420000MOD	PRISM, 850 wideband cell, 20 W module, diversity classic
499797	FWP-D210000MOD	PRISM, 800/900 EIdEN, 6.5 W module, non-diversity, classic
499798	FWP-8426000MOD	PRISM, 20 W PCS module, diversity, SGL SD
499799	FWP-U816000MOD	PRISM, 40 W 700 Upper C module, non-diversity, SGL SD
499800	FWP-A426000MOD	PRISM, 20 W AWS module, diversity, SGL SD
499801	FWP-L4MT000MOD	PRISM, dual 20 W 700 Lower ABC module, MIMO
499802	FWP-B810100MOD	PRISM, CELL, 40 W module, non-diversity, SGL SD, single position

Contact your local sales representative for more information.

Firetide HotPort 7000 Series MIMO-802.11n Wireless Nodes

FIRETIDE

Firetide HotPort 7000 mesh nodes provide fiber-equivalent throughput and reliability over wireless Ethernet, delivering true wireless infrastructure capabilities for large-scale municipal, public safety, industrial and transportation deployments.

FEATURES

- Fiber-like speed with up to 400 Mbps throughput, exceeding that of current wired solutions such as T1, Fast Ethernet or OC-3 fiber
- Ease of deployment with the self-forming nature of Firetide infrastructure mesh
- Ease of network management and planning with advanced utilities: antenna alignment and integrated spectrum analysis
- Reliable multicast capabilities for real-time evidence-grade video streaming to multiple destinations
- Flexible configuration with operation in 2.4 GHz, 4.9 GHz (U.S. public safety) or 5 GHz frequency bands

HOTPORT 7010 - INDOOR



With indoor MIMO-802.11n capabilities, dual radio, tri-band spectrum 2.4 GHz/4.9 GHz/5 GHz, 400 mW, wireless mesh node, includes power supply desktop brick 12 V DC, two-meter North America AC power cable, documentation CD and hardware installation guide. The 11n MIMO functionality requires purchase of SW-7000-MIMO license.

Anixter No.	Vendor No.	Description
424454	7010	Six dual-band 2.4 GHz and 5 GHz 3 dBi antennas, only single radio enabled, second radio enabling requires purchase of SW-7000-RADIO-1
434819	7010-FIPS	FIPS 140-2 NIST-compliant, six dual-band 2.4 GHz and 5 GHz 3 dBi antennas, only single radio enabled, second radio enabling requires purchase of SW-7000-RADIO-1
448363	7010-900	Indoor 900 MHz capable, three dual-band 2.4 GHz and 5 GHz 3 dBi antennas, one 900 MHz staging antenna

HOTPORT 7020 - OUTDOOR



With outdoor MIMO-802.11n capabilities, dual radio, tri-band spectrum 2.4 GHz/4.9 GHz/5 GHz, 400 mW, wireless mesh node, five-meter North America AC power cable, three RJ45 weatherized Ethernet connectors, documentation CD and hardware installation guide. The 11n MIMO functionality requires purchase of SW-7000-MIMO license.

Anixter No.	Vendor No.	Description
424457	7020	Six dual-band 2.4 GHz and 5 GHz 3 dBi antennas, only single radio enabled, second radio enabling requires purchase of SW-7000-RADIO-1
434818	7020-FIPS	FIPS 140-2 NIST-compliant, six dual-band 2.4 GHz and 5 GHz 3 dBi antennas, only single radio enabled, second radio enabling requires purchase of SW-7000-RADIO-1
448362	7020-900	Outdoor 900 MHz capable, three dual-band 2.4 GHz and 5 GHz 3 dBi antennas, one 900 MHz staging antenna

HOTPORT 7000 SERIES SOFTWARE

For a single node.

Anixter No.	Vendor No.	Description
394208	SW-7000-RADIO-1	Radio license; electronic license allows user to enable and use the second radio in the Firetide 7000 series product
424462	SW-7000-MIMO	MIMO license; allows user to enable and use the MIMO functionality (11n) on the Firetide 7000 series product

Firetide Antenna Assemblies for HotPort 7000 Mesh Nodes

FIRETIDE

Customized antennas designed to work with Firetide 7000 mesh nodes are suited for both outdoor and indoor installations. Customers choose the specific antenna based on the installation requirements, directional or omnidirectional, and frequencies ranging from 4.9 to 6.1 GHz or 2.3 to 2.7 GHz.

FEATURES

- Each antenna contains three active antenna elements capable of transmitting and receiving data
- Antennas are MIMO-aware; the elements are polarized to maximize the MIMO effectiveness
- Antennas are easy to install and replace; wall- or pole-mountable

[Continued on next page >>](#)

Mesh

Firetide

(continued) Firetide Antenna Assemblies for HotPort 7000 Mesh Nodes

90° SECTOR ANTENNAS

Includes BSA MIMO 3x3.

Anixter No.	Vendor No.	Description
397481	AS90-024-MIMO-13	90° sector antenna, 2.3-2.7 GHz, 3x13 dBi gain
424823	AS90-055-MIMO-16-T	Triple-polarized 90° sector antenna, 4.9-6.1 GHz, 3x16 dBi gain

120° SECTOR ANTENNAS

Includes BSA MIMO 3x3.

Anixter No.	Vendor No.	Description
397486	AS120-024-MIMO-11	2.3-2.7 GHz, 3x11.5 dBi gain
397845	AS120-055-MIMO-15	4.9-6.1 GHz, 3x15 dBi gain

20° PATCH ANTENNA

Anixter No.	Vendor No.	Description
403367	AP20-050-MIMO-19	20° patch antenna, BSA MIMO 3x3, 4.9-6.1 GHz

OMNIDIRECTIONAL ANTENNAS

Anixter No.	Vendor No.	Description
403365	AO-024-MIMO-8	Omnidirectional BSA, MIMO 3x3, 2.3-2.7 GHz
414061	AO-050-MIMO-9	Omnidirectional BSA, MIMO 3x3, 4.9-6.1 GHz, 3x9 dBi gain
489200	AP5-050-MIMO-28	5° parabolic dish antenna 2x2 MIMO 4.9-6.1 GHz capable

900 MHZ ANTENNAS

Anixter No.	Vendor No.	Description
403369	AO-900-8	900 MHz omnidirectional antenna, 8 dBi gain
403370	AP40-900-12	900 MHz 12 dBi panel antenna (43 x 42 degree beamwidth)

Firetide HotPoint 5000 Series MIMO Access Points

FIRETIDE

Firetide HotPoint 5000 series MIMO wireless access points deliver a modular access solution for large-scale, indoor and outdoor wireless networks. Their modular design enables full network and software integration of the access points with a Firetide wireless mesh network while at the same time permitting independent physical placement directly connected to a wired network to provide optimal accessibility for Wi-Fi clients.

FEATURES

- Single-point network management for mesh and access points with HotView Pro software
- Create logical networks with varying levels of security, access and performance
- Designed for Hot Spots - supports virtual APs and virtual AP groups
- Advanced security and performance features (WPA and WEP encryption)

HOTPOINT 5000 SERIES - INDOOR



Anixter No.	Vendor No.	Description
424473	5100	HotPoint 5100 - Includes Firetide MIMO access point, dual radio 802.11 a/b/g/n, 100 mW, AC to DC power adapter with region-specific power cable, six dual-band 2.4 GHz and 5 GHz 3 dBi antennas for staging, one RJ45 Ethernet cable
489199	AOI-245-MIMO-25	Six-port 2.4 GHz, 5 GHz dual-band ceiling antenna with three 2.4 GHz connectors and three 5 GHz connectors

HOTPOINT 5200 - OUTDOOR



Anixter No.	Vendor No.	Description
424475	5200	Includes Firetide MIMO access point, dual radio 802.11 a/b/g/n, 100 mW, pole-mounting bracket, PoE injector, one RJ45 Ethernet cable for staging, one weatherized Ethernet kit, six dual-band 2.4 GHz and 5 GHz 3 dBi antennas for staging

Firetide HotPoint 4100 Access Points

FIRETIDE

Firetide HotPoint 4100 wireless access points deliver a modular access solution for large-scale, indoor and outdoor wireless networks. Their modular design enables full network and software integration of the access points with a Firetide wireless mesh network while at the same time permitting independent physical placement directly connected to a wired network to provide optimal accessibility for Wi-Fi clients.

FEATURES

- Single-point network management for mesh and access points with HotView Pro software
- Create logical networks with varying levels of security, access and performance
- Designed for Hot Spots - supports up to four virtual APs and virtual AP groups
- Advanced security and performance features (WPA and WEP encryption)
- High-power radios with up to 400 mW provide extended reach and penetration

HOTPOINT 4100 - INDOOR



Anixter No.	Vendor No.	Description
384861	4100	Includes Firetide access point (802.11 b/g, up to 400 mW), AC/DC power-supply adapter, kit of international plugs - USA, EU, UK, AUS, two 2.4 GHz 5 dBi antennas, management software

Firetide HotView Pro Management Software

FIRETIDE



HotView Pro provides centralized management and control of single or multiple Firetide mesh networks with an intuitive Web-based user interface. It is a sophisticated, yet simple-to-use platform for configuring, monitoring and managing HotPort mesh nodes, HotPoint access points and HotClient Customer Premises Equipment (CPEs).

FEATURES

- Unique flow control, traffic prioritization and network management capabilities
- Ethernet Direct - allows interconnection with a 100 Mbps wired connection to reduce hop counts
- Mesh bridge integration - connect multiple mesh networks into a single environment
- End-to-end security - AES 128 or 256, WPA2 and/or WEP at 104/128 or 40/64 bits
- Unmatched mobility - real-time video from moving vehicles with seamless roaming
- Highly flexible real-time mesh network management
- Intuitive GUI interface
- Single-point management of mesh and access products

HOTVIEW PRO MESH MANAGEMENT SOFTWARE

The electronic license includes integrated HotPort mesh and HotPoint access point or stand-alone HotPoint access point.

Anixter No.	Vendor No.	Description
384862	3000-9000-ELE-10	Per 10 nodes
333051	3000-9000-ELE	Per 30 nodes

FIRETIDE MOBILITY CONTROLLER SOFTWARE

The electronic license includes integrated HotPort mesh and HotPoint access point or stand-alone HotPoint access point.

Anixter No.	Vendor No.	Description
384864	SW-MC001-ELE-10	Per 10 nodes
384865	SW-MC001-ELE-30	Per 30 nodes

Firetide WLAN Controller

FIRETIDE

Focused on improving the reliability and availability of the WLAN system, Firetide WLAN controllers bring in features like WLAN self-healing and intelligent data traffic routing. With no licensing for AP scaling and features, the controller solution is simple, flexible and ready to deploy. The controller features Firetide's wireless platform software from their mesh product line that is highly optimized for transporting high-performance applications such as video and voice over wireless.

FEATURES

- Seamless L3 mobility
- Auto AP discovery and offline configuration
- Automatic channel management and assignment
- WLAN self-healing
- External LDAP server*
- External authentication for captive portal users*
- Captive portal account management*
- External MAC-ACL list support with limit of 4,096 per VAP*
- Remote AP support*
- * Additional FWC 2000 feature not available in FWC 1000

Continued on next page >>

Mesh

Firetide

(continued) Firetide WLAN Controller

FWC 1000



Includes four 10/100/1000 Mbps ports, one Ethernet RJ45 cable, power supply desktop brick 12 V DC, one 2 meter North America AC power cable.

Anixter No.	Vendor No.	Description
448365	FWC 1000	WLAN controller - for 50 access points

FWC 2000



Provides supports scaling up to 150 with stacking of three controllers, includes four 10/100/1000 Mbps ports, one Ethernet RJ45 cable, power supply desktop brick 12 V DC, one two-meter North America AC power cable.

Anixter No.	Vendor No.	Description
448364	FWC 2000	Rack-mountable WLAN controller - for 50 access points

FMC 2000

FIRETIDE



The Firetide mobility controller delivers high-speed infrastructure mobility and seamless client roaming by converting existing static network into mobility-enabled networks. This mobility solution offers multiple levels of redundancy, thereby eliminating any single point of failure in the network and circumvents any temporary RF impediments.

FEATURES

- Supports up to 64 meshes, 2,048 static nodes, 1,024 static nodes
- Single point for mobility configuration
- Single point for monitoring
- Network-wide views

- Simplified configuration
- Enhanced firmware upgrade

Anixter No.	Vendor No.
448366	FMC 2000

Description

Mobility controller for mobility up to 64 meshes, four 10/100/1000 Mbps ports, one Ethernet RJ45 cable, power supply desktop brick 12 V DC, one 2 meter North America AC power cable

Firetide HotClient 2100 Customer Premises Equipment (CPE)

FIRETIDE

Firetide HotClient 2100 customer premises equipment (CPE) provides a secure and reliable solution for extending the reach of outdoor wireless mesh networks indoors. HotClient CPE enables network operators deploying municipal and enterprise wireless networks the ability to maintain optimal user experience and connectivity anywhere.

FEATURES

- Centralized management via HotView Pro Network Management Software
- Ability to configure and enforce service level agreements (SLA)
- RADIUS server management
- Built-in standards-based security features including: WEP2, AES 128/256, RADIUS, SSID, MAC access control, NAT, VLAN and digital certificates

HOTCLIENT 2100 - INDOOR



Anixter No.	Vendor No.
362296	2100

Description

HotClient 2100 customer premises equipment, indoor, includes Firetide CPE (802.11 b/g, 400 mW), AC/DC power supply adapter, kit of international plugs - USA, EU, UK, AUS, two 2.4 GHz 5 dBi antennas, management software

Firetide Mounting Solutions

FIRETIDE

Anixter No.	Vendor No.
448477	MT-7100

Description

HotPort 7100 family indoor mounting kit for wall, upright, ceiling and office panel installation, 10 machine screws

Firetide Antenna Assemblies

FIRETIDE



Firetide antenna assembly kits are available in 2.4 GHz, 5.1 to 5.8 GHz and 4.9 GHz public safety versions, omnidirectional, panel/patch and 90° sector antenna configurations, providing antenna solutions to meet the needs of your deployment.

FEATURES

- Firetide-certified antenna assembly
- Outdoor antennas are unobtrusive so they blend with any environment
- Sturdy attachment solutions with precise adjustments for optimal antenna performance
- Includes 1.5 meter LMR-400 cable, lightning suppressor and mounting solution
- Indoor and outdoor configurations

OMNIDIRECTIONAL ANTENNAS

Anixter No.	Vendor No.	Description
344681	AO-050-N	4.9 to 5.8 GHz omnidirectional antenna with 10 dBi gain, 1.5 meter LMR400 cable, lightning suppressor with N-type connector and pole-mount bracket
403369	AO-900-8	900 MHz omnidirectional antenna, 8 dBi gain
333063	4000-1111	2.4 GHz omnidirectional antenna with 7.5 dBi gain, N-type connector, (for HotPoint APs only)

PANEL ANTENNAS

Anixter No.	Vendor No.	Description
344687	AP-050-N	4.9 to 5.8 GHz subscriber panel antenna with 23 dBi gain (21 dB gain for 4.9 - 5.1), 1.5 meter LMR400 cable, lightning suppressor with N-type connector and Az/E1 adjustable mount
403370	AP40-900-12	900 MHz 12 dBi panel antenna (43 x 42 degree beamwidth)

SECTOR ANTENNAS

Includes 1.5 meter LMR400 cable and lightning suppressor with N-type connector.

Anixter No.	Vendor No.	Description
344730	AS-024-N	2.4 to 2.7 GHz 90° sector antenna with 15.5 dBi gain and tilt mount
344733	AS-050-N	4.9 to 5.8 GHz 90° sector antenna with 16 dBi gain and elevation-adjustable mount

ANTENNA CABLE ASSEMBLIES

Anixter No.	Vendor No.	Description
489205	CB-LT-01	RF lightning arrester
489201	CB-C-015-N	Antenna cable assembly, 1.5 m LMR-400
489204	CB-C-050-N	Antenna cable assembly, 5 m LMR-400
489202	CB-C-015-N-MIMO	MIMO antenna cable assembly for 5200 and 7020. 3-in-1 bundled 1.5 m LMR-400 cables
489203	CB-C-025-N-MIMO	MIMO antenna cable assembly for 5200 and 7020. 3-in-1 bundled 2.5 m LMR-400 cables
448476	CB-025-N-MIMO	MIMO antenna cable assembly for 5200 and 7020. 3-in-1 bundled 2.5 m LMR-400 cables with integrated lightning suppressor N-type connector

Firetide Power Sources and Cables

FIRETIDE

Anixter No.	Vendor No.	Description
344736	PO-010-N	7000 series outdoor-rated 10 m North America AC power cable
378360	PO-010-E	7000 series outdoor-rated 10 m EU and Korea AC power cable
369148	PO-010-U	7000 series outdoor-rated 10 m UK, Singapore AC power cable
448478	7020-1001	6-pin female DC power connector for HotPort 7000 series
489198	7020-1002	RF terminator - 50 ohms - N male

REPLACEMENT PARTS

Anixter No.	Vendor No.	Description
448473	SP-7200-03	7020 series replacement outdoor clawtooth mounting kit
448475	SP-7200-04	7020 series outdoor-rated replacement 5 m North America AC power cable
384871	SP-4100-01	4100 series replacement indoor AC/DC power supply adapter, kit of international plugs - U.S., EU, UK, AUS
403373	SP-2100-01	2100 series replacement indoor AC/DC power supply adapter, kit of international plugs - U.S., EU, UK, AUS
403375	SP-7200-02	7020 series replacement weatherized field-installable Ethernet RJ45 connector
403376	SP-7100-01	7010 series replacement indoor power supply desktop brick 12 V DC

Access Points

BAT Wireless Ethernet Access Points

HIRSCHMANN



Available in either DIN-rail or IP67/waterproof hard/pole mount, along with an extensive antenna offering, the BAT wireless Ethernet devices offer 802.11a/b/g/n connectivity via single or dual integrated radios.

SPECIFICATIONS

1. 802.11b/g (2.4 GHz) and 802.11a/h/n (5 GHz)
2. Simultaneous 2.4/5 GHz communications and redundant WLAN
3. Up to 300 Mbps bandwidth using 802.11n
4. IEEE 802.11i and 802.1x security
5. Redundant 24 V DC power inputs (incl. IEEE 802.3af PoE support)
6. Redundant connections using RSTP
7. Built-in IP routing, fast roaming and firewall
8. Operating temperature of -30°C to +50°C

Contact your local sales representative for more information.

Bluesocket Virtual Wireless LAN

ADTRAN INC

The NetVanta 160 wireless access point is designed to extend a wireless reach to a NetVanta-based network. Providing concurrent 802.11b/g and 802.11a radio support at speeds up to 54 Mbps, this business-class access point fits the corporate environment needing a secure, integrated WLAN solution. The Netvanta 160 and 161 Access Points radio support at speeds up to 300 Mbps. The auto-sensing 10/100BASE-T 802.3af-compliant Ethernet port can be used to power the unit, expanding installation options by eliminating the need to be near a power outlet. The robust, business-class security includes WPA and WPA2 and virtual access points (VAPs) to securely segment the wireless network. It's hosted through a variety of NetVanta Wi-Fi access controllers for a wide range of entry-level price points, flexible connectivity options and the ability to be centrally managed.

Bluesocket is ADTRAN's vWLAN solution and is an industry-first virtualized wireless LAN solution running on VMware. vWLAN enables cloud-based control and management of the wireless LAN, providing maximum scalability, reliability and security.

FEATURES

- NetVanta 150 Wireless Access Point
 - 802.11a/b/g and 802.11a/b/g/n dual-radio wireless access point
 - Robust, business-class security including WPA and WPA2 support
 - PoE support for flexible deployment
 - Centrally manage multiple access points
 - Managed by a NetVanta Wi-Fi access controller
 - One 10/100BASE-T port with 802.3af-compliant PoE support

- Bluesocket Virtual Wireless LAN (vWLAN)
 - Eliminates all physical controller hardware
 - Centralized, software-based control and management of all APs in any location
 - Control and data plane separation, provides seamless failover with zero packet loss
 - Firewall and security policies at the access point ensure unwanted traffic never enters the LAN

NETVANTA WAPs

Anixter No.	Vendor No.	Description
495936	1700416F1	NetVanta 160 wireless access point, 802.11a/b/g/n, internal MIMO antenna
489633	1700417F1	NetVanta 161 wireless access point, 802.11a/b/g/n, six external RP-SMA connectors

BLUESOCKET APs

Anixter No.	Vendor No.	Description
488481	1951900G1	vWLAN VMware-ready software
461604	1700910F1	Bluesocket 1800 indoor access point, 802.11a/b/g/n, six internal MIMO antennas
461611	1700911F1	Bluesocket 1840 indoor access point, 802.11a/b/g/n, six external RP-SMA connectors
488467	1700954F1	Bluesocket 1920 indoor access point, internal antennas, dual radio, 2x2:2
488469	1700955F1	Bluesocket 1925 indoor access point, dual radio, 2x2:2, external antennas
488470	1700950F1	Bluesocket 1930 indoor access point, internal antennas, dual radio, 3x3:3
488472	1700951F1	Bluesocket 1935 indoor access point, dual radio, 3x3:3 external antennas
488473	1700952F1	Bluesocket 1940 outdoor access point, dual radio, 3x3:3
488475	1951901G1	Access point vWLAN software license
488476	1700922F1	12 V external power supply
488477	1700920F1	802.3af-compliant PoE injector
488479	1700939F1	2.4 GHz and 5 GHz omni antennas for the Bluesocket 1840
495979	1700921F1	Suspended ceiling bracket
495980	1951910G1	Unified User Access Control Software for vWLAN

802.11n MIMO Antennas

TERRAWAVE SOLUTIONS

TerraWave Solutions has developed a full line of multiple-input, multiple-output (MIMO) antennas designed to operate with a variety of manufacturers' access points and support demanding applications in 802.11 and next-generation wireless communications systems. Every TerraWave antenna is covered by their two-year warranty program.

MIMO OMNIDIRECTIONAL ANTENNAS



Anixter No.	Vendor No.	Description
399844	M6025040M01D2402M	802.11n 2.4/5 GHz 2.5/4 dBi ceiling-mount mini MIMO omnidirectional antenna with RPTNC plug connectors
374762	M6025045M013602	802.11n 2.4/5 GHz 2.5/4.5 dBi ceiling-mount MIMO omnidirectional antenna with RPTNC plug connectors
399845	M6060060M0136020	802.11n 2.4/5 GHz 6 dBi outdoor MIMO omnidirectional antenna with RPTNC plug connectors
495796	M6060060M01D33602	802.11n 2.4/5 GHz 6 dBi outdoor MIMO omnidirectional antenna, three dual-band leads with RPTNC plug connectors
495797	M6060060M01D33620	802.11n 2.4/5 GHz 6 dBi outdoor MIMO omnidirectional antenna, three dual-band leads with RPSMA plug connectors
495798	M6060060M01D43602	802.11n 2.4/5 GHz 6 dBi outdoor MIMO omnidirectional antenna, four dual-band leads with RPTNC plug connectors
495799	M6060060M01D36020	802.11n 2.4/5 GHz 6 dBi outdoor MIMO omnidirectional antenna, six dual-band leads with RPTNC plug connectors
495800	M6060060M01D36200	802.11n 2.4/5 GHz 6 dBi outdoor MIMO omnidirectional antenna, six dual-band leads with RPSMA plug connectors
495801	M6060060M01D36070	802.11n 2.4/5 GHz 6 dBi outdoor MIMO omnidirectional antenna, six dual-band leads with N-style plug connectors

MIMO PATCH ANTENNAS



802.11n 2.4/5 GHz 6 dBi MIMO

Anixter No.	Vendor No.	Description
374773	M6060060MP13602	Patch antenna with RPTNC plug connectors
495802	M6060060MP1D43620	Quad patch antenna with RPSMA plug connectors
495803	M6060060MP1D43602	Quad patch antenna with RPTNC plug connectors

MIMO RUBBER DUCK ANTENNAS



802.11n 2.44.9-5.85 GHz 2/3 dBi MIMO

Anixter No.	Vendor No.	Description
374775	M7020030MR10002	Rubber duck antenna with RPTNC plug connectors

Antennas

Omnidirectional Antennas

TERRAWAVE SOLUTIONS

FIBERGLASS OMNIDIRECTIONAL ANTENNAS



TerraWave's fiberglass omnidirectional antennas are designed for indoor and outdoor wireless local area networks. The antennas feature a UV-stable, vented radome that provides sustainability against extreme weather conditions. These antennas can be mast- or wall-mounted with the included mounting bracket. Every TerraWave antenna is covered by their two-year warranty program.

Anixter No.	Vendor No.	Description
326576	T24040010006	2.4 GHz 4 dBi
326577	T24060010006	2.4 GHz 6 dBi
326578	T24080010006	2.4 GHz 8 dBi
326579	T24100010006	2.4 GHz 10 dBi
326580	T24120010006	2.4 GHz 12 dBi
342401	T58060010006	5.7 to 5.85 GHz 6 dBi
342402	T58080010006	5.7 to 5.85 GHz 8 dBi
342403	T58100010006	5.7 to 5.85 GHz 10 dBi
342406	T58120010006	5.7 to 5.85 GHz 12 dBi

CEILING-MOUNT OMNIDIRECTIONAL ANTENNAS



TerraWave offers various styles of indoor omnidirectional antennas, perfectly suited for in-building wireless application systems. Every TerraWave antenna is covered by their two-year warranty program.

Anixter No.	Vendor No.	Description
399885	M7025025023602T	2.4/4.9-5 GHz 2.5 dBi diversity omnidirectional antenna with RPTNC plug connector
399887	M7025040023602MT	2.4/4.9-5 GHz 2.5/4 dBi diversity mini omnidirectional antenna with RPTNC plug connector
342419	M6020045023602	2.4/5.1 to 5.85 GHz 2/4.5 dBi dual-band diversity omnidirectional antenna with RPTNC plug connectors and ceiling tile clips

Anixter No.	Vendor No.	Description
399889	M6020045023602S	2.4/5.1 to 5.85 GHz 2/4.5 dBi dual-band diversity omnidirectional antenna with RPTNC plug connectors and screw mount
399894	M6030030013602	2.4/5.1 to 5.85 GHz 3 dBi dual-band ceiling-mount omnidirectional antenna with RPTNC plug connectors
495874	M6030030013620	2.4/5.1 to 5.85 GHz 3 dBi dual-band ceiling-mount omnidirectional antenna with RPSMA plug connectors
399898	M604006002D1802R	2.4/5.1 to 5.85 GHz 4/6 dBi dual-band ceiling-mount omnidirectional antenna with right angle RPTNC plug connectors and screw mount
495875	M6025040M01D3620P	2.4/5 GHz 2.5/4 dBi mini MIMO ceiling-mount omnidirectional antenna with RPSMA plug connectors and plenum cable
495876	M6025040M01D3602P	2.4/5 GHz 2.5/4 dBi mini MIMO ceiling-mount omnidirectional antenna with RPTNC plug connectors and plenum cable
495877	M6025040M01D3620T	2.4/5 GHz 2.5/4 dBi micro MIMO ceiling-mount omnidirectional antenna with RPSMA plug connectors and plenum cable
495878	M6025040M01D3602T	2.4/5 GHz 2.5/4 dBi micro MIMO ceiling-mount omnidirectional antenna with RPTNC plug connectors and plenum cable

Patch and Panel Antennas

TERRAWAVE SOLUTIONS

PANEL ANTENNAS



TerraWave's panel antennas provide large horizontal beamwidths which are perfect for a variety of outdoor wireless applications. Every TerraWave antenna is covered by their two-year warranty program.

Anixter No.	Vendor No.	Description
326584	T24130P10006GT	2.4 GHz 13 dBi panel antenna with N-style jack connector

Antennas

Anixter No.	Vendor No.	Description
326585	T24190P10006GT	2.4 GHz 19 dBi panel antenna with N-style jack connector
399875	M6070070P136020	2.4/5 GHz 7 dBi panel antenna with RPTNC connector

SECTOR PANEL ANTENNAS



The TerraWave panel antennas provide superior coverage for a variety of outdoor wireless applications. Every TerraWave antenna is covered by their two-year warranty program and includes the V-POL sector panel antenna with N-style jack connector.

Anixter No.	Vendor No.	Description
374695	T24135P10006120	2.4 GHz 13.5 dBi 120 degree
374696	T24140P10006-90	2.4 GHz 15 dBi 90 degree
374697	T24150P1000660	2.4 GHz 16 dBi 60 degree
374698	M5160160P10006	4.9 to 5.85 GHz 16 dBi 120 degree
374700	M5170170P1000660	4.9 to 5.85 GHz 18 dBi 60 degree

Yagi Antennas

TERRAWAVE SOLUTIONS



TerraWave's yagi antennas are designed for directional applications in any frequency range and feature high gain. Each antenna can be mounted in a horizontal or vertical polarization and include heavy-duty steel mounting brackets. Every TerraWave antenna is covered by their two-year warranty program.

Anixter No.	Vendor No.	Description
342389	T24100Y13602	2.4 GHz 10 dBi yagi antenna with RPTNC plug connector
495884	M4080095Y11206	806-960/1710-2500 MHz 8/9.5 yagi antenna with N-style jack connector
342415	T58150Y13602	5.7 to 5.85 GHz 15 dBi yagi antenna with RPTNC plug connector
342417	T58175Y13602	5.7 to 5.85 GHz 17.5 dBi yagi antenna with RPTNC plug connector

Antennas

OBERON INC



Aesthetic Wi-Fi and cellular antennas designed for installation in Oberon secure ceiling and wall enclosures.

FEATURES

- Dual-band Wi-Fi and cellular bands available
- Color-matched to enclosures
- Omnidirectional antenna pattern
- Simple, secure installation
- Offer superior pattern coverage
- Install in Oberon enclosures for a cohesive, professional look
- Aesthetic, professional installation
- Minimize wireless downtime and interruptions

Anixter No.	Vendor No.	Description
481933	34-ZDUAL-RPTNC	Dual-band Wi-Fi antenna to mount on enclosure doors, RPTNC connector
481934	34-ZDUAL-RPSMAM	Dual-band Wi-Fi antenna to mount on enclosure doors, RPSMAM connector
481935	34-ZMIMO3X1	Dual-band Wi-Fi antenna, 3X1 for MIMO access points, to mount on enclosure doors
481936	34-ZMIMO6X1	Dual-band Wi-Fi antenna, 6X1 for MIMO access points, to mount on enclosure doors
481937	34-MIMO	Dual-band Wi-Fi antenna, 3X1 for MIMO access points, to mount on enclosure doors
481938	34-CELLULAR-PCS	Cellular antenna for in-building wireless and DAS, to mount on enclosure doors
481939	34-MULTICARRIER	Cellular and Wi-Fi antenna for in-building wireless and DAS, to mount on enclosure doors

Continued on next page >>

Antennas

Wall-mounted Wireless Access Point Enclosures

OBERON INC



Oberon's 105X series ceiling-mounted wireless access-point enclosures are ideal for conveniently and aesthetically securing WAPs in suspended-ceiling environments. This series accommodates WAPs from most suppliers.

FEATURES

- Fits into standard suspended-ceiling systems
- Attractive, white powder-coated finish
- UL Listed; designed to NEC paragraphs 300-22, 23 for use in plenum space
- OSHPD-approved
- Interchangeable doors permit simple migration to new WAPs, antennas and technologies
- Simplify NEC Code compliance; plenum rated enclosures eliminate poke-throughs in ceiling tiles
- Simply compliance with Infection Control Risk Assessment (ICRA) procedures in health care
- Simply regulation compliance (PCI in retail, FIPS in federal government)
- Aesthetic, professional installation
- Minimize wireless downtime and interruptions

CEILING ENCLOSURES - 2 FT. X 2 FT.

The model 1052-00 series features a locking enclosure designed specifically for the Cisco 1242, 1232, 1260 and 3500e and Aruba Networks AP-70 access points. The enclosure accommodates most other manufacturers' access points with Oberon's optional universal mounting plate. This aesthetic, white powder-coated steel enclosure has openings in the door for up to seven antennas. No ceiling tile cuts are required for installation. UL Listed and OSHPD approved.

Anixter No.	Vendor No.	Description
481668	1052-CCOAP	Standard door with holes for six antennas
481909	1052-CCOANT	Door is designed to secure Cisco AIR-ANT2451NV-R 6-in-1 antenna
481910	1052-ENT3610	Door is designed to secure Enterasys 3610 WAP
481913	1052-AP105	Door is designed to secure Aruba Networks AP-105
481914	1052-AP135	Door is designed to secure Aruba Networks AP-135
481916	1059-MIMO	Door has mounting features for two Oberon 3-in-1 MIMO antennas
441745	1052-00	With 12.5 in. x 12.5 in. x 4.5 in. box
441746	1052-HFHS-N	For Enterasys WAPs

CEILING ENCLOSURES WITH WAP - 2 FT. X 2 FT.

The model 1052-00 and 1059-00 series are deep enough for any access points with non-detachable antennas, with an overall height of less than 5 3/4 in. It is designed to accommodate access points from most manufacturers. This aesthetic, white powder-coated steel enclosure has an impact-resistant, RF-transparent door, which protrudes only 4 in. below the ceiling plane. The AP Enclosure is 18 in. x 18 in. x 2.6 in. deep, 17.5 lb. (not including access point). No ceiling tile cuts are required for installation. UL Listed.

Anixter No.	Vendor No.	Description
441745	1052-00	With 12.5 in. x 12.5 in. x 4.5 in. box
441748	1059-00	With 14 in. sq. x 4 in. ABS dome

Ceiling-mounted Wireless Access Point Locking Mounts

OBERON INC



Oberon's 106X series ceiling-mounted wireless access point locking mounts are ideal for conveniently and aesthetically securing WAPs in suspended-ceiling environments. This series accommodates WAPs from most suppliers.

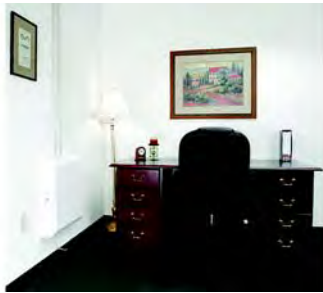
FEATURES

- Fits into standard suspended-ceiling systems
- Attractive, white powder-coated finish
- UL Listed, designed to NEC paragraphs 300-22, 23 for use in plenum space
- OSHPD-approved
- Model 1068-00 has interchangeable mounting brackets for most suppliers' WAPs
- Simplify NEC code compliance; plenum-rated mounting solutions eliminate poke-throughs in ceiling tiles
- Simplify compliance with Infection Control Risk Assessment (ICRA) procedures in health care
- Simplify regulation compliance (PCI in retail, FIPS in federal government)
- Aesthetic, professional installation
- Minimize wireless downtime and interruptions

Anixter No.	Vendor No.	Description
327223	1060-00	2 ft. x 2 ft. suspended ceiling, locking mounting solution for Cisco 1130a/g WAPs
481917	1060-T	2 ft. x 2 ft. suspended ceiling, locking mounting solution for Cisco 1130a/g WAPs; regular ceiling tile design
442123	1064-T	2 ft. x 2 ft. locking drop ceiling mount for Cisco WAPs, tegular-style flange, 6 lb.
433683	1064-00	2 ft. x 2 ft. drop locking drop ceiling mount for Cisco WAPs, 6 lb.
481918	1066-00	2 ft. x 2 ft. suspended ceiling, locking mounting solution for Aruba Networks AP-135 WAPs
495676	1068-00	2 ft. x 2 ft. suspended ceiling, locking mounting solution for most suppliers' WAPs

Workspace Telecom Enclosure (WTE)

OBERON INC



Oberon's 107X and 108X series workspace telecommunications enclosures are designed for ceiling or wall mounting in the workspace. These products accommodate access points, DAS components, antennas, etc.

FEATURES

- Enclosure must be supported by the building ceiling structural system, not tile gridwork
- UL listed and designed to satisfy NEC 300-22 and 300-23
- Weight does not include internal equipment

Anixter No.	Vendor No.	Description
481919	1070-00	2 ft. x 2 ft. suspended ceiling-mounted zone enclosure for active components; highly perforated door
441758	1072-00	22.5 in. x 22.5 in. x 4.5 in. ceiling mounted workspace telecom enclosure, 11.5 lb.
441924	1082-00	22 in. x 22 in. x 4 in. network cabinet with ABS dome

Retrofit/Dapter Doors for Oberon Wireless Access Point Enclosures

OBERON INC



Oberon's 38-X series gives existing customers the cost-effective option of installing new access points, antennas and technologies in the existing enclosure without removing the enclosure from the ceiling.

FEATURES

- Installs into Oberon Model 1052-00 2 ft. x 2 ft. locking ceiling tile enclosures
- Attractive, white powder-coated finish
- UL Listed, designed to NEC paragraphs 300-22, 23 for use in plenum space
- OSHPD Approved
- Simplify upgrades to new access points, antennas and technologies
- Reduce upgrade costs and labor by keeping existing enclosure
- Help to future-proof network installations
- Aesthetic, professional installation
- Minimize wireless downtime and interruptions

Anixter No.	Vendor No.	Description
481924	38-52-CCOANT	For Cisco antennas
495689	38-52-CCOAP	For Cisco 1140/3500/3600 wireless access points
481926	38-52-ENT3610	For Enterasys 3610 wireless access points
481927	38-52-AP105	For Aruba Networks AP105 wireless access points
481928	38-52-AP135	For Aruba Networks AP135 wireless access points

Enclosures

Ceiling Enclosures

TERRAWAVE SOLUTIONS

CEILING TILE ENCLOSURES



TerraWave's ceiling tile enclosures contain and protect an access point or an antenna system in an aesthetically pleasing and stealthy solution within a suspended ceiling. Suspended in a similar manner as the ceiling tile, they are tethered by wire to the roof structure. Once installed, the AP is protected and hidden from view and the enclosure is flush with the ceiling tile. Every TerraWave enclosure is covered by their two-year warranty program.

Anixter No.	Vendor No.	Description
421431	TW-CTEN-P	24 in. x 12 in. x 7 in. ABS plastic ceiling tile enclosure
374550	TW-CTEN-MIMO	24 in. x 14 in. x 6 in. ceiling tile enclosure for 802.11n MIMO access points
399971	TW-CTEN2-MIMO	24 in. x 24 in. x 4 in. ceiling tile enclosure for 802.11n MIMO access points
495885	TW-CTEN-2X2-1142U	24 in. x 24 in. x 1.5 in. ceiling tile enclosure for the Cisco 1142, 3500 and 3600 series APs
495886	TW-CTEN-2X2-1142B	24 in. x 24 in. x 1.5 in. bevel edge ceiling tile enclosure for the Cisco 1142, 3500 and 3600 series APs
495887	TW-CTEN-2X2-A105T	24 in. x 24 in. x 1.5 in. ceiling tile enclosure for the Aruba AP 105
399972	TW-CTENHC-MIMO	24 in. x 24 in. x 8 in. ceiling tile enclosure for 802.11n MIMO access points

HARD-CAP CEILING ENCLOSURES



TerraWave's 20 in. x 20 in. x 8 in. 802.11n multiple-input, multiple-output (MIMO) hard-cap ceiling enclosure protects and hides an 802.11n MIMO access point (AP) in an aesthetically pleasing solution within a hard-cap ceiling, such as metal, sheet rock, stucco or wood. Once installed, the enclosure is conveniently secured and flush with the hard-cap ceiling. This enclosure is specifically designed to support any TerraWave or Cisco 802.11n MIMO omnidirectional antenna. Every TerraWave enclosure is covered by their two-year warranty program.

Anixter No.	Vendor No.	Description
399925	TW-HC-MIMO	For 802.11n MIMO access points
495888	TW-HC-MIMO-L	With key lock for 802.11n MIMO access points

Metal Enclosures

TERRAWAVE SOLUTIONS

TerraWave's metal enclosures are commonly used in harsh environmental surroundings and to protect wireless LAN equipment from damage caused by tampering. These rugged enclosure solutions make it easy to mount and protect the most commonly used radio equipment on the market today. They are constructed of steel, making them extremely durable and perfect to protect wireless equipment from severe outside elements. Every TerraWave enclosure is covered by their two-year warranty program.

FLEX LINE - 12 IN. X 10 IN. X 6 IN.



With key lock and zero to eight holes for jumpers.

Anixter No.	Vendor No.	Description
399927	T12106-KEY-S-8	Includes solid door
399928	T12106-KEY-W-8	Includes window

FLEX LINE - 14 IN. X 12 IN. X 6 IN.

With key lock and zero to eight holes for jumpers.

Anixter No.	Vendor No.	Description
399929	T14126-KEY-S-8	Includes solid door
399930	T14126-KEY-W-8	Include window

Enclosures

Polycarbonate Enclosures

TERRAWAVE SOLUTIONS

Polycarbonate enclosures are designed for outdoor or indoor use to protect wireless equipment from outdoor elements and theft. These enclosures are durable, extremely affordable and the lightest-weight enclosure solutions TerraWave offers. These enclosures are available in three standard sizes, 12 in. x 10 in. x 6 in., 14 in. x 12 in. x 6 in. and 18 in. x 16 in. x 10 in., two different locking options and either a solid or clear door and can be configured to include power, heaters and fans. Every TerraWave enclosure is covered by their two-year warranty program.

CLEAR DOOR



12 in. x 10 in. x 6 in. NEMA 4X polycarbonate enclosure

Anixter No.	Vendor No.	Description
330994	V12106-L-C-2	With two holes for jumpers and latch locks
330995	V12106-L-C-4	With four holes for jumpers and latch locks
374551	V12106-L-C-6	With six holes for jumpers and latch locks
330996	V12106-C60-C-2	With two holes for jumpers and lock
330997	V12106-C60-C-4	With four holes for jumpers and lock
374552	V12106-C60-C-6	With six holes for jumpers and lock

SOLID DOOR



12 in. x 10 in. x 6 in. NEMA 4X polycarbonate enclosure

Anixter No.	Vendor No.	Description
421405	V12106LOBASIC	With no holes for jumpers and latch locks
342567	V12106-L-0-2	With two holes for jumpers and latch locks
342569	V12106-L-0-4	With four holes for jumpers and latch locks

Anixter No.	Vendor No.	Description
374555	V12106-L-0-6	With six holes for jumpers and latch locks
342565	V12106-C60-0-2	With two holes for jumpers and lock
342566	V12106-C60-0-4	With four holes for jumpers and lock
374556	V12106-C60-0-6	With six holes for jumpers and lock

For other options please call your local sales representative.

Wireless Access Point Enclosures for Drop (Suspended) Ceilings, WAPs with Detachable Antenna

OBERON INC

FEATURES

- Construction: 16-gauge backbox, 14-gauge door; textured white powder-coated steel
- Fully hinged locking door, keyed alike
- Weight: 13 lb. (not including access point or antenna)
- Enclosure must be supported by the building ceiling structural system, not tile gridwork

2 FT. X 2 FT. DROP CEILING WAP ENCLOSURE



The model 1052-00 wireless LAN access point enclosure is a locking enclosure designed specifically for the Cisco 1242, 1232, 1260 and 3500e and Aruba Networks AP-70 access points. The enclosure accommodates most other manufacturers' access points with Oberon's optional universal mounting plate. This aesthetic, white powder-coated steel enclosure has openings in the door for up to seven antennas. No ceiling tile cuts are required for installation. UL Listed and OSHPD approved.

Anixter No.	Vendor No.	Description
441745	1052-00	With 12.5 in. x 12.5 in. x 4.5 in. box

Continued on next page >>

Enclosures

(continued) Wireless Access Point Enclosures for Drop (Suspended) Ceilings, WAPs with Detachable Antenna

2 FT. X 2 FT. DROP CEILING ENCLOSURE



The 1052-HFHS-N wireless LAN access point enclosure is a locking enclosure designed for the Enterasys HiPath 2620, 3620, 3640 and similar 802.11a/b/g/n access points with three connectors. This aesthetic, white powder-coated steel enclosure has mounting features on the door for the dual-band three input 802.11n antenna (Oberon part number 34-S24493TS36RSM). No ceiling tile cuts are required for installation. UL Listed and OSHPD approved.

Anixter No.	Vendor No.	Description
441746	1052-HFHS-N	For Enterasys WAPs

Wireless Access Point Enclosures for Drop (Suspended) Ceilings with UL Classified ABS Domes

OBERON INC

FEATURES

- 16-gauge backbox, 14-gauge door; textured white powder-coated steel enclosure, UL 94-5VA Classified ABS dome, OSHPD approved
- Enclosure must be supported by the building ceiling structural system, not tile gridwork

2 FT. X 2 FT. DROP CEILING ENCLOSURE



The 1055-AN wireless LAN access point enclosure is a locking, 2 ft. x 2 ft. ceiling tile enclosure designed specifically for the Aruba Networks access points with non-detachable antennas (AP-65, AP-121, AP-125, AP-135). This aesthetic, white powder-coated steel enclosure has an impact-resistant, RF-transparent dome that extends only 4.5 in. below the ceiling plane with a fully hinged locking door, keyed alike. The AP enclosure is 12.5 in. x 12.5 in. x 2.6 in. deep at 13 lb. (not including access point or antenna), with a 16-gauge backbox and 14-gauge door frame. No ceiling tile cuts are required for installation. De-rate upper operating temperature limit from +50°C to +40°C when AP in the enclosure.

Anixter No.	Vendor No.	Description
441747	1055-AN	With ABS dome for Aruba Networks WAPs

2 FT. X 2 FT. DROP CEILING WAP ENCLOSURE



The model 1059-00 wireless LAN access point ceiling tile enclosure is deep enough for any access points with non-detachable antennas, with an overall height of less than 5 3/4 in. It is designed to accommodate access points from most manufacturers. This aesthetic, white powder-coated steel enclosure has an impact-resistant, RF-transparent door, which protrudes only 4 in. below the ceiling plane. The AP Enclosure is 18 in. x 18 in. x 2.6 in. deep, 17.5 lb. (not including access point). No ceiling tile cuts are required for installation. UL Listed.

Anixter No.	Vendor No.	Description
441748	1059-00	With 14 in. sq. x 4 in. ABS dome

Wireless Access Point Mounts for Drop (Suspended) Ceilings for WAPs with Integrated Antennas

OBERON INC



The 1064-00 wireless access point ceiling mount is designed to provide a secure, convenient and aesthetic mounting solution for the Cisco 1140/1260/3500e/3500i series 802.11n access points. This aesthetic, white powder-coated steel 2 ft. x 2 ft. ceiling tile-like mount locks the access point in place with a patent-pending locking mechanism. Access point moves, adds and changes can be performed without removing the mount from the ceiling. No ceiling tile cuts are required for installation. The model 1064-T features a 3/8 ft. bevel in the flange around the perimeter, to match "tegular" ceiling tiles commonly used in new construction and renovations.

FEATURES

- OSHPD approved, OPA #1638
- Construction: 18-gauge textured white powder-coated steel, 16-gauge aluminum backbox
- Enclosure must be supported by the building ceiling structural system, not tile gridwork

Anixter No.	Vendor No.	Description
433683	1064-00	2 ft. x 2 ft. drop locking drop ceiling mount for Cisco WAPs, 6 lb.
442123	1064-T	2 ft. x 2 ft. locking drop ceiling mount for Cisco WAPs, tegular-style flange, 6 lb.

Domed Wireless Ceiling Enclosure

CHATSWORTH PRODUCTS INC (CPI)



The AAT-ACE-DOME is a ceiling-mount enclosure for wireless access points designed for use in open office spaces. AAT-ACE-DOME replaces a single 2 ft. x 2 ft. drop-ceiling tile. The opaque dome is 14 in. in diameter and projects 6.5 in. below the drop ceiling. The dome is mounted on a fully hinged locking door providing easy access to equipment and cables for authorized technicians only.

FEATURES

- Features one 3/4 in. H x 3 in. W wedge-protected cable-access port with approved foam sealing kit
- Includes removable 6 7/8 in. L x 8 7/8 in. W equipment mounting plate predrilled for various wireless transmitters
- Includes two sets of standoffs to adjust the height of the mounting plate within the dome
- Dome: 6.5 in. high, 14 in. diameter, white plastic
- Product weight: 10.5 lb.
- Customer must provide threaded rod and installation hardware

Anixter No.	Vendor No.	Description
251030	AAT-ACE-DOME	23.75 in. L x 23.75 in. W x 3 in. D, sheet aluminum, white

Large Wireless Wall-mount Enclosures

CHATSWORTH PRODUCTS INC (CPI)

The AAT-WMESG-P and AAT-WME-P are wall-mounted enclosures for wireless transmitters designed for warehouse, manufacturing/light industrial and exterior use. A single front door provides access to equipment. The door is attached with a continuous steel hinge and secured by padlock through two stainless steel padlock hasps. A gasket seals the interior at closure.

FEATURES

- Enclosure is completely sealed; customer drills hole to fit application
- Removable interior back plate predrilled for wireless transmitters
- Secure enclosure uses two padlocks, 3/8 in. maximum shackle diameter, not included
- Available with a plexi window in the door or a solid door
- Enclosure: fiberglass reinforced polyester, white
- Window and back plate: acrylic plastic
- Product weight: 7.5 lb.
- Enclosure: 15.5 in. H x 13.5 in. W x 6 in. D
- The interior of the enclosure is 5 in. deep
- Maximum equipment size is 13.5 in. x 11.5 in. x 5 in.
- Customer must provide installation hardware
- NEMA 1, 2, 3, 3R, 4, 4X, 12 and 13

WITH PLEXI WINDOW



Anixter No.	Vendor No.	Description
251026	AAT-WMESG-P	Large wall-mounted enclosure with plexi window

WITH SOLID DOOR



Anixter No.	Vendor No.	Description
251025	AAT-WME-P	Large wall-mounted enclosure with solid door

Enclosures

Ceiling-mounted Wireless Access Point Enclosures

CHATSWORTH PRODUCTS INC (CPI)



Wireless ceiling enclosures provide a secure, enclosed space for wireless access points, routers and the network connections for these devices. Ceiling enclosures are placed above the acoustical ceiling. Equipment mounts to the enclosure door for easy access. The faceplate on the door can be changed to match equipment. The door is flush with the ceiling when in the closed position. Holes in the doors allow antennas to project below the ceiling.

FEATURES

- Several styles available
- Fits within a 2 ft. x 2 ft. acoustical ceiling tile
- Includes foam to seal the cable-access port
- Made of strong, lightweight aluminum

WIRELESS CEILING ENCLOSURES WITHOUT FACEPLATES

Anixter No.	Vendor No.	Description
261044	AAT-CAP	14.5 in. L x 12 in. W x 10 in. D, white
318608	AAT-CAP-10-P	14.5 in. L x 12 in. W x 13 in. D, white, with junction box
288054	AAT-CAP-S	14.5 in. L x 12 in. W x 5 in. D, white

FACEPLATES

Anixter No.	Vendor No.	Description
261048	AAT-CAP-00	Blank faceplate, white
318609	AAT-CAP-UNI	Universal faceplate
374813	AAT-CAP-1232	Faceplate for Cisco Aironet 1232, white
374814	AAT-CAP-1242	Faceplate for Cisco Aironet 1242, white

ASSEMBLED KITS

Anixter No.	Vendor No.	Description
318610	AAT-CAP-00-KIT	AAT-CAP enclosure with blank (solid) faceplate
318611	AAT-CAP-UNI-KIT	AAT-CAP enclosure with universal faceplate
395879	AAT-CAP-1232-KIT	AAT-CAP enclosure with faceplate for Cisco Aironet 1232
395872	AAT-CAP-1242-KIT	AAT-CAP enclosure with faceplate for Cisco Aironet 1242
318614	AAT-CAP-S-00-KIT	AAT-CAP-S enclosure with blank (solid) faceplate

Anixter No.	Vendor No.	Description
318615	AAT-CAP-S-UNI-KIT	AAT-CAP-S enclosure with universal faceplate
374823	AAT-CAP-S-1232-KIT	AAT-CAP-S enclosure with faceplate for Cisco Aironet 1232
374824	AAT-CAP-S-1242-KIT	AAT-CAP-S enclosure with faceplate for Cisco Aironet 1242

PANZONE Wireless Access Point Enclosure

PANDUIT



FEATURES

- Specifically designed for use with Cisco and other popular wireless access points
- Lockable enclosure protects against tampering, vandalism and theft
- Complies with UL 2043
- Door knockouts allow multiple antenna configurations
- Optional ceiling bracket kit allows enclosure to be mounted in the ceiling for design flexibility and optimum wireless coverage
- Optional 2 ft. x 2 ft. ceiling-bracket kit eliminates cutting the ceiling tile because bracket replaces standard 2 ft. x 2 ft. ceiling tile

PANZONE WIRELESS ACCESS POINT ENCLOSURES

Anixter No.	Vendor No.	Description
492808	PZWC35E	For Cisco Aironet 1260 and 3500E series wireless access points. UL 2043 rated
433670	PZWC35I	For Cisco Aironet 1140 and 3500 series, integral ceiling tile enclosure
433664	PZWC35	For Cisco Aironet 1140 and 3500 series, wall- or ceiling-mount enclosure
373093	PZWIFIEN	For Cisco Aironet 1250 series
373094	PZWIFIENA	For Cisco Aironet 1250 series utilizing Cisco patch antennas (AIR-ANT5140V-R and/or AIR-ANT2430V-R)
305896	PZWIFIE	For Cisco Aironet 1200 series
323385	PZWIFIED	For Cisco Aironet 1230 and 1240 series
348528	PZWIFIEA	For Cisco Aironet 1200, 1230 and 1240 series utilizing Cisco patch antennas (AIR-ANT5145V-R and/or AIR-ANT5959)

Enclosures

Anixter No.	Vendor No.	Description
323383 443511	PZWIFIEW PZWIFIER	For Cisco Aironet 1130 series For Aruba AP-124 and AP-125 series
351802	PZWIFIEH	For HP ProCurve 420, Foundry IP200 and Enterasys RBT-4102 series

CEILING-BRACKET KITS

Anixter No.	Vendor No.	Description
305893	PZWIFICB	Ceiling-bracket kit for PZWIFIE and PZWIFIEW
323386	PZWIFDCB	Ceiling-bracket kit for PZWIFIEN, PZWIFIENA, PZWIFIED, PZWIFIEA, PZWIFIEH
330748	PZW2X2CB	2 ft. x 2 ft. ceiling-bracket kit for PZWIFIE and PZWIFIEW
330749	PZW2X2DCB	2 ft. x 2 ft. ceiling-bracket kit for PZWIFIEN, PZWIFIENA, PZWIFIED, PZWIFIEA and PZWIFIEH

PANZONE NEMA 4X and IP66-rated Wireless Access Point Enclosures

PANDUIT



FEATURES

- NEMA 4X and IP66 rating protects against corrosion, windblown dust and rain, splashing water and hose-directed water
- Universal design accommodates the most popular wireless access points including Cisco Aironet 1200, 1230, 1240, 1250 and 1300 Series
- Fiberglass construction and aluminum mounting plate allows quick and easy access point installation
- UL 508A Listed and approved
- Includes preconfigured mounting template
- Provisions for padlocks to protect against tampering and theft
- Optional NEMA 4X-rated fittings available in various sizes
- Optional NEMA 4X drain and vent kit
- Connectivity accessory kit (included): two-position outlet box, MINI-COM TX6 PLUS Jack Module, TX6 PLUS Patch Cord, silicone sealant and grounding cable
- Shielded connectivity accessory kit also available

WIRELESS ENCLOSURES DESIGNED FOR POWER OVER ETHERNET APPLICATIONS
External dimensions: 13.56 in. H x 13.47 in. W x 6.56 in. D; Internal dimensions: 11.70 in. H x 11.70 in. W x 6.29 in. D

Anixter No.	Vendor No.	Description
361215	PZNWE12	Includes UTP connectivity kit
399992	PZNWE12S	Includes shielded connectivity kit

WIRELESS ENCLOSURES DESIGNED FOR TRADITIONAL AC POWER APPLICATIONS
External dimensions: 15.50 in. H x 13.50 in. W x 6.25 in. D; Internal dimensions: 13.53 in. H x 11.55 in. W x 5.94 in. D

Anixter No.	Vendor No.	Description
349321	PZNWE14	Includes UTP connectivity kit
399993	PZNWE14S	Includes shielded connectivity kit

NEMA 4X RATED FITTINGS AND ACCESSORIES

Anixter No.	Vendor No.	Description
399994	PZNF1	Rated compression fitting, ideal for cable diameters of 0.115 in. to 0.250 in.
361217	PZNF2	Rated compression fitting, ideal for cable diameters of 0.230 in. to 0.395 in.
399995	PZNF3	Rated compression fitting, ideal for cable diameters of 0.170 in. to 0.450 in.
361216	PZNDVK	Drain and vent kit

Enclosures

Wireless Enclosure Solutions

WIREMOLD

OVERHEAD WIRELESS ACCESS POINT BRACKET



The new Overhead Wireless Access Point Mounting Bracket provides a secure support for mounting wireless access points in overhead applications. The bracket can be mounted directly to basket tray or threaded rod, or to threaded rod attached to cable tray. Wireless access points mounted in the Overhead Wireless Access Point Mounting Bracket can be located for high visibility, convenience and optimal Wi-Fi signal coverage.

Anixter No.	Vendor No.	Description
316246	WAPBRKT	Overhead access bracket, 12 3/4 in. long x 9 1/2 in. wide x 3 1/8 in. deep opening

WIRELESS ACCESS POINT CEILING ENCLOSURE



The new Wireless Access Point Ceiling Enclosure provides a secure enclosure for mounting wireless access points into a grid ceiling system. The enclosure provides a permanent location that will accommodate wireless access points from most leading manufacturers. Designed for easy assembly, the enclosure can be fully assembled into a ceiling tile on a regular work surface before being installed into the overhead ceiling grid system. The cover, which is also removable, has knockouts that can accept a variety of antenna configurations. The enclosure is constructed of lightweight aluminum and painted with a textured white powder-coat finish to blend aesthetically with most ceiling finishes. Specific kits to mount the most popular wireless access points are available as well as custom enclosure sizes.

Anixter No.	Vendor No.	Description
316247	WAPENCL	12 in. x 4 in. x 12 in.
324309	WAPENCL-24-24-4	24 in. x 24 in. x 4 in.
374631	WAPE10-1200KIT	24 in. x 24 in. x 10 in., for use with Cisco Aironet 1200
374632	WAPE10-1232KIT	24 in. x 24 in. x 10 in., for use with Cisco Aironet 1232
374633	WAPE10-1242KIT	24 in. x 24 in. x 10 in., for use with Cisco Aironet 1242

Anixter No.	Vendor No.	Description
374634	WAPE10-DOME	24 in. x 24 in. x 10 in. with 14 in. diameter by 6.5 in. deep transmission dome
374635	WAPE10-UNIKIT	24 in. x 24 in. x 10 in., universal kit for use with most wireless access points

NONMETALLIC ACCESS POINT MOUNTING ENCLOSURE



The Nonmetallic Access Point Mounting Enclosure conceals wireless access points in a durable UL/C(UL) Listed enclosure. Designed to provide a permanent location for wireless connectivity hardware within the communications infrastructure of a building, the enclosure can be easily secured to any structure allowing optimal Wi-Fi signal coverage to adjacent spaces while supporting industry-standard PoE (Power over Ethernet).

Anixter No.	Vendor No.	Description
316245	NMAPME	Nonmetallic access point mounting enclosure, 13 1/4 in. high x 7 3/4 in. wide x 2 1/2 in. deep interior

VISTA WIRELESS ACCESS POINT ENCLOSURE



The Vista Series provides a means for integrating the access points necessary for wireless connectivity into a communications infrastructure of a building. Access points installed in a Vista column can be located throughout an office space to provide optimal Wi-Fi signal coverage in a secure, yet accessible, environment having built-in connectivity and power options. In addition, the wireless access point enclosure is also available as an option with many of the large-frame Vista column configurations to take advantage of the full range of Vista aesthetic and functional capabilities.

Anixter No.	Vendor No.	Description
354244	VLWAP	Vista wireless access point enclosure

Access Point Mount

TERRAWAVE SOLUTIONS



Anixter No.	Vendor No.	Description
399974	TW-UMB-BR1300KIT1	Articulating access point mount for Cisco BR1300

In-building Site Survey Kit

TERRAWAVE SOLUTIONS



Designed to provide cutting-edge survey capabilities, the In-building Site Survey Kit is complete with accessories crucial to performing professional site surveys. Complete kits are available in 802.11a/b/g and 802.11n.

All kits include a variety of essential site survey tools including one or more of the following products: Cisco Access Point, cardbus adapter, a variety of TerraWave antennas including rubber duck, indoor omnidirectional and patch antennas, TerraWave Site Survey Battery Pack, TerraWave RJ45 green (802.3af) PoE cable, TerraWave RJ45 green (Cisco) PoE cable, TerraWave power supply for battery pack, TerraWave travel case with custom foam cutout, measuring wheel, 50 access point marking locators, duct tape, zip ties, Velcro, pens, colored tape and other accessories.

FEATURES

- Designed for high-caliber site survey professionals
- Airline-approved travel case
- Wheels and handle for easy transport

Anixter No.	Vendor No.	Description
495935	SSKBASIC1	Site survey basic kit
326518	SSKMINI-01-TW	Site survey essentials kit
326520	SSK-001-TW	Semi-loaded site survey kit with antenna
326521	SSK-005-TW	Totally loaded 802.11a/b/g kit
399863	SSK-001-TW-MIMO	MIMO site survey essentials kit
399864	SSK-005-TW-MIMO	MIMO totally loaded site survey kit



Smart Grid Solutions

Data Center Solutions

Structured Cabling Solutions

- Copper and optical cabling
- Patch cords and patch panels
- Preterminated solutions
- Intelligent patching

Accessories

- Racks, cabinets and shelving
- Cable management
- Overhead duct and ladder rack
- Grounding and bonding

Power and Cooling Solutions

- Power distribution units (PDU)
- Intelligent power strips
- Uninterrupted power supplies (UPS)
- Passive, precision and in-row cooling solutions

Management and Monitoring Solutions

- TZ Praetorian™ Cabinet Locking System
- KVM switches and console managers
- Environmental monitoring and management products
- CSU/DSU

Infrastructure Solutions (Inside the Substation)

Wire and Cable Products

- Control and power cable
- Medium voltage (5 kV to 35 kV)
- Grounding and bare copper cables
- Hook-up and lead wire
- Instrumentation and thermocouple cables
- Specialty wire and cable products

Industrial Communication Products

- Industrial Ethernet cabling and connectivity

- Industrial fiber (preterminated and bulk)
- Industrial-rated active networking components
- Industrial-rated gateway products

Support and Supply Products

- Cable management
- Terminations, splices and lugs
- Grounding products
- Enclosures

Security Solutions

- Video surveillance
- Access control
- Biometrics
- Sensors, contacts, motion detectors
- Intercoms
- IR illuminators

- Media converters
- Network servers, switches and storage
- Wireless transmission systems
- Fiber and copper transmission systems

