

# OSP Category-rated Cable

## Media 6 Outdoor Cable - Category 6

COMMSCOPE UNIPRISE SOLUTIONS



The Media 6 outdoor cable is swept out to 250 MHz. It is NOT CM-rated for indoor use.

### SPECIFICATIONS

1. 24 AWG, 4-pair
2. Solid bare-copper conductors
3. Nominal O.D. 0.250 in.
4. Approx. weight 30.01 lb./kft
5. PE insulation
6. Black PE jacket with floodant

### Technical Information & Standards

ANSI/TIA 568-C.2 Category 6  
 CENELEC EN 52088-6-1  
 ISO/IEC 11801 Class E

Anixter No.	Vendor No.	Description
CM-00424CSP-6-0D	6NF4+ BLACK REEL	24-4/PR UTP black PE jacket

## Ultra II Outdoor Cable - Category 5e

COMMSCOPE UNIPRISE SOLUTIONS



Ultra II is a 350 MHz Enhanced Category 5e UTP cable. The Ultra II outdoor version features a water-blocking flooded core and tough, UV-resistant polyethylene jacket. This cable is NOT CM-rated for indoor use.

### SPECIFICATIONS

1. 24 AWG, 4-pair
2. Solid bare-copper conductors
3. Nominal O.D. 0.240 in.
4. Approx. weight 27.63 lb./kft
5. Polyolefin insulation
6. Black polyethylene jacket with floodant

### Technical Information & Standards

ANSI/TIA 568-C.2 Category 5e  
 CENELEC EN 50288-3-1  
 ISO/IEC 11801 Class D

Anixter No.	Vendor No.	Description
CM-00424CAG-5C-0D	5NF4 BLACK REEL	24-4/PR UTP black PE jacket

## Hyper Plus 5e OSP

BERK-TEK

The Hyper Plus 5e OSP standard Category 5e UTP cables are designed for outside applications, either aerial or buried in conduit or duct, where building-to-building interconnections must be made.

### SPECIFICATIONS

1. 24 AWG, 4-pair
2. Solid bare copper conductors
3. Nominal O.D. 0.207 in.
4. Approx. weight 20 lb./MF
5. PE insulation
6. Black PE jacket with water-resistant flooding compound

### Technical Information & Standards

ANSI/TIA 568-C.2 Category 5e  
 ANSI/ICEA 5-56-434  
 ISO/IEC 11801  
 EN 50173

Anixter No.	Vendor No.	Description
CM-00424BKT-5E-0D	10071496	Black

## Outside Plant Broadband Category 5e 4-pair Cables

SUPERIOR ESSEX

### SPECIFICATIONS

1. 24 AWG 4-pair solid annealed bare copper conductors
2. Solid polyolefin insulation
3. 80°C ETPR filling compound
4. Meets transmission requirements of ANSI/TIA-568-B.2
5. BBDNE: Inner polyethylene jacket, flat 8 mil coated aluminum
6. Black polyethylene outer jacket
7. BBDGE: Inner polyethylene jacket, corrugated 5 mil CCS
8. Fully flooded. Black polyethylene outer jacket

### NON-GOPHER-RESISTANT

Anixter No.	Vendor No.	Type	No. of Pairs	Nom. O.D. (in.)	Approx. Wt. lb./1,000 ft.
F-04P24BPD-5ES	04-601-54	BBDNE	4	0.310	48

### GOPHER-RESISTANT

Anixter No.	Vendor No.	Type	No. of Pairs	Nom. O.D. (in.)	Approx. Wt. lb./1,000 ft.
F-04P24BPN-5E	04-601-55	BBDGE	4	0.330	62

## Outside Plant Cable

# OSP Category-rated Cable

### Outside Plant Cable - Category 6

#### COMMSCOPE SYSTIMAX SOLUTIONS

SYSTIMAX Outside Plant Cable is for use in an outdoor environment. This 4-pair cable was developed for high-speed applications requiring state-of-the-art electrical performance in an environmentally robust package. As a component in the SYSTIMAX Structured Connectivity Solutions, system performance is tested and guaranteed for all Category 6 applications.

The cable was developed for use in the outdoor environment and is a gel-filled design to be used in wet locations. It can be used with Category 6 protectors in exposed locations. These protectors have been specially developed for Category 6 data applications and should not be used for voice applications. Standard telephony protection devices do not provide adequate protection or electrical performance to meet rigid Category 6 horizontal electrical requirements and cannot be used in Category 6 applications. Standard 110ANA1 protection devices can be used for voice circuits in exposed locations.

Outside Plant Cable installations must meet all ISO/IEC 11801 requirements for a horizontal link. No more than four connections are allowed, including the protection devices at each end. Each protector counts as one of the four connections. Total cable length is limited to 90 m (295 ft.) for a Category 6 operation.

#### SPECIFICATIONS

1. 23 AWG, 4-pair
2. Solid bare copper conductors
3. Nominal O.D. is 0.250 in.
4. Approx. weight 27 lb./MF
5. Polyolefin insulation
6. Gel-filled core
7. PE jacket

#### Technical Information & Standards

ANSI/TIA 568-A Category 6

Anixter No.	Jacket Color	Material ID
CM-00423AVA-6-0D	Black	760008888

This product is part of a total SYSTIMAX solution when used with the Category 6 Protector Unit (Part No. 286701).

### Outside Plant Cable - GenSPEED - Category 5e and 6

#### GENERAL CABLE



GenSPEED 6 and GenSPEED 5000 Outside Plant Cables feature a gel-filled construction to prevent moisture migration in underground and wet applications. A wide temperature range allows for enduring performance in extreme weather environments.

#### SPECIFICATIONS

1. 24 AWG (Cat 5e) 23 AWG (Cat 6), 4-pair, UTP
2. Solid bare annealed copper conductors
3. Nominal O.D. (in.): 0.230 (0.340 armored). Cat 5e - 0.250 Cat 6
4. Approx. weight (lb./MF): 25 (50 armored)
5. Insulation: Polyolefin

6. Jacket: UV- and abrasion-resistant polyethylene
7. Waterproof-gel flooding compound
8. NOTE: 1,000 ft. reel

#### Technical Information & Standards

ANSI/TIA 568-C.2

MIL-C-24640A Water Penetration Requirement

RoHS-compliant Directive 2002/95/EC

Anixter No.	Vendor No.	Description
CM-00423GEN-C6-02	7136100	Category 6, black
CM-00424GEN-5E-OSP	5136100	Category 5e, non-armored, black
CM-00424GEN-5E-ARMOR	5136101	Category 5e, aluminum armor, black

### Category 5e Station Wire

#### GENERAL CABLE



General Cable offers high-quality station wire for indoor and outdoor applications. This product is dual listed for CMX OUTDOOR/CMR and withstands the very low temperatures found in colder regions (down to -40°C) without jacket cracking. The CMX outdoor rating allows the cable to be exposed for a short distance from the network interface device on the outside of the house to the point where the cable enters the house. This type of cable is not for direct-buried installations.

#### SPECIFICATIONS

1. 24 AWG, 4-pair, UTP
2. Solid bare annealed copper conductors
3. Nominal O.D.(in.) 0.21
4. Approx. weight (lb./MF) 26
5. Polyolefin insulation
6. Flame-retardant PVC jacket

#### Technical Information & Standards

ANSI/TIA 568 C.2

NEC/CEC Type CMX Outdoor-CMR

Telcordia GR-3164-Severe Cold Impact

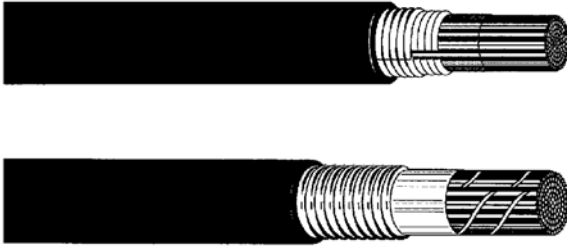
RoHS Compliant Directive 2002/95/EC

Anixter No.	Vendor No.	Description
CMX-00424PAH-5E-01	2137113E	Ivory 1,000 ft.

Other colors available.

# Outside Plant Cable Exchange Cable

## RUS/REA PE-89 Design



For use in exchange and campus areas, direct buried or installed in-duct. Suitable for voice frequency use on all pairs and carrier frequency, both analog and digital, on a selected pair assignment basis. For full pair utilization at carrier frequencies, a core-dividing screen is required. (See T1 cables.)

### SPECIFICATIONS

1. Solid, annealed, bare copper conductors
2. Conductor insulation is foamed polyolefin with a solid skin of the same material. Color-coded to telephone industry standards
3. Insulated conductors are twisted into pairs of varying lengths of lay to minimize crosstalk
4. Pairs are stranded into units (and super units, if required by pair count)
5. The cable core is filled with a waterproofing compound and wrapped with a non-hygroscopic core tape
6. Specifications permit six varieties of shielding, four of which are considered gopher-resistant
7. A flooding compound is applied over the core and to all surfaces of the shield/armor to resist moisture entry and corrosion
8. The cable is finished with a black polyethylene jacket which is sequentially printed with footage marker at regular intervals

### Technical Information & Standards

Cables with DFC suffix conform to ANSI ICEA 7CFR-1755-890.

Cables with DFO suffix conform to ANSI ICEA 7CFR-1755-089.

### STANDARD CABLES

A 0.008 in. coated aluminum black polyethylene (SEALPIC-FSF) (Part No. suffix DFC).

Anixter No.	No. of Pairs	AWG	Approx. Wt. lb./1,000 ft.	Nom. O.D. (in.)
E-000624DFC	6	24	61	0.360
E-001224DFC	12	24	91	0.430
E-002524DFC	25	24	156	0.540
E-005024DFC	50	24	260	0.670
E-010024DFC	100	24	476	0.890
E-015024DFC	150	24	679	1.050
E-020024DFC	200	24	894	1.210
E-030024DFC	300	24	1,264	1.390
E-040024DFC	400	24	1,688	1.630
E-060024DFC	600	24	2,471	1.940
E-090024DFC	900	24	3,638	2.330
E-120024DFC	1,200	24	4,867	2.730
E-150024DFC	1,500	24	6,045	3.060
E-000622DFC	6	22	78	0.400
E-001222DFC	12	22	122	0.480
E-002522DFC	25	22	214	0.620
E-005022DFC	50	22	395	0.830
E-010022DFC	100	22	711	1.080
E-020022DFC	200	22	1,325	1.430
E-030022DFC	300	22	1,933	1.710

### GOPHER-RESISTANT CABLES

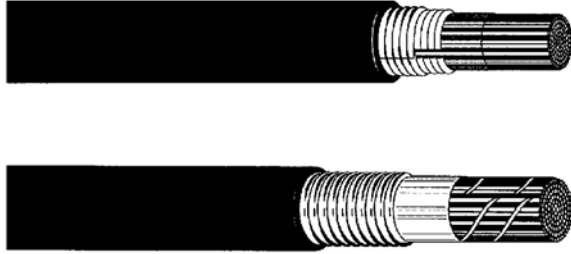
A polymer-coated aluminum shield/polymer-coated steel armor and black polyethylene jacket (CASPIC-FSF) (Part No. suffix DFO). Other pair counts and AWG are available.

Anixter No.	No. of Pairs	AWG	Approx. Wt. lb./1,000 ft.	Nom. O.D. (in.)
E-000624DFO	6	24	87	0.390
E-001224DFO	12	24	125	0.460
E-002524DFO	25	24	196	0.570
E-005024DFO	50	24	319	0.710
E-010024DFO	100	24	540	0.910
E-020024DFO	200	24	1,013	1.260
E-040024DFO	400	24	1,809	1.640
E-060024DFO	600	24	2,642	1.970
E-120024DFO	1,200	24	5,120	2.770
E-000622DFO	6	22	107	0.430
E-001222DFO	12	22	158	0.510
E-002522DFO	25	22	263	0.650
E-005022DFO	50	22	463	0.860
E-020022DFO	200	22	1,468	1.480
E-030022DFO	300	22	2,063	1.720

## Outside Plant Cable

# Exchange Cable

### RUS/REA PE-39 Design



For use in exchange and campus areas, direct buried or installed in-duct. Suitable for voice frequency use on all pairs and carrier frequency, both analog and digital, on a selected pair assignment basis. For full utilization at carrier frequencies, a core-dividing screen is required. (See T1 cables.)

#### SPECIFICATIONS

1. Solid, annealed, bare copper conductors
2. Solid polyolefin insulation, color-coded to telephone industry standards
3. Insulated conductors are twisted into pairs of varying lengths of lay to minimize crosstalk
4. Pairs are stranded into units (and super units, if required by pair count)
5. The cable core is filled with a waterproofing compound and wrapped with a non-hygroscopic core tape
6. A flooding compound is applied over the core and to all surfaces of the shield/armor to resist moisture entry and to inhibit corrosion
7. The cable is finished with a black polyethylene jacket which is sequentially printed with footage marker at regular intervals

#### Technical Information & Standards

Cables with AFC suffix conform to ANSI ICEA 7CFR-1755-390

#### STANDARD CABLES - SEALPIC-F

A 0.008 in. coated aluminum black polyethylene (part suffix AFC).

Anixter No.	No. of Pairs	AWG	Approx. Wt. lb./1,000 ft.	Nom. O.D. (in.)
E-000624AFC	6	24	67	0.390
E-001224AFC	12	24	102	0.470
E-002524AFC	25	24	175	0.590
E-005024AFC	50	24	304	0.750
E-010024AFC	100	24	561	1.010
E-020024AFC	200	24	1,029	1.330
E-030024AFC	300	24	1,532	1.680
E-040024AFC	400	24	1,997	1.900
E-000622AFC	6	22	91	0.450
E-001222AFC	12	22	143	0.550
E-002522AFC	25	22	255	0.700
E-005022AFC	50	22	468	0.940
E-010022AFC	100	22	853	1.240
E-040022AFC	400	22	3,125	2.370

If stock not available, suggest substitution of part number suffix DFQ for foam/skin insulated product.

### Outside Plant Cables - Direct Burial



For use in exchange and campus areas, direct buried or installed in-duct. Suitable for voice frequency use on all pairs and carrier frequency, both analog and digital, on a selected pair assignment basis. For full pair utilization at carrier frequencies, a core-dividing screen is required.

#### SPECIFICATIONS

1. Solid, annealed, bare copper conductors
2. Conductors are dual insulated with foamed natural polyolefin and finished with a solid plastic skin, color-coded to industry standards
3. Insulated conductors are twisted into pairs of varying lengths of lay to minimize crosstalk
4. Pairs are stranded into units (and super units, if required by pair count). In cable sizes 900 pair and greater, a mirror-image, super unit color-code system is used
5. The cable core is filled with an ETPR filling compound and wrapped with a non-hygroscopic core tape
6. The AN\_A (Suffix: DFA) cables ALPETH sheath construction is 0.008 in. thick, corrugated, aluminum shield and a black polyethylene jacket. The jacket is sequentially printed with a footage marker at regular intervals
7. The AN\_W (Suffix: DFQ) cables ASP sheath construction consists of 0.008 in. thick, corrugated, aluminum shield with a 0.006 in. corrugated steel shield, and a black polyethylene jacket. The jacket is sequentially printed with a footage marker at regular intervals
8. A flooding compound is applied over the core and to all surfaces of the aluminum and steel shields to resist moisture entry and to inhibit corrosion

#### Technical Information & Standards

Cables conform to applicable Bellcore specifications.

#### ASP CABLES

Anixter No.	No. of Pairs	AWG	Bell Code	Approx. Wt. lb.	Nom. O.D. (in.)
E-002524DFQ	25*	24*	ANMW	185	0.600
E-005024DFQ	50	24	ANMW	302	0.720
E-010024DFQ	100	24	ANMW	515	0.960
E-020024DFQ	200	24	ANMW	915	1.250
E-030024DFQ	300	24	ANMW	1,328	1.500
E-040024DFQ	400	24	ANMW	1,714	1.650
E-060024DFQ	600	24	ANMW	2,485	2.010
E-090024DFQ	900	24	ANMW	3,616	2.380
E-120024DFQ	1,200	24	ANMW	4,818	2.710
E-150024DFQ	1,500	24	ANMW	5,944	3.040
E-002522DFQ	25	22	ANAW	259	0.720
E-020022DFQ	200	22	ANAW	1,417	1.500
E-030022DFQ	300	22	ANAW	2,048	1.790

\*Other pair counts and AWG are available.

# Outside Plant Cable Exchange Cable

## RUS/REA Aerial Cable



For use in exchange and campus areas, supported by a pre-installed messenger. Suitable for voice frequency use on all pairs and carrier frequency, both analog and digital, on a selected pair assignment basis. For full pair utilization at carrier frequencies, a core-dividing screen is required. (See T1 and T1C screened.)

### SPECIFICATIONS

1. Solid annealed bare copper conductors
2. Solid polyolefin conductor insulation color-coded to telephone industry standards
3. Insulated conductors are twisted into varying lengths of lay to minimize crosstalk
4. Pairs are stranded into units (and super units if required by pair count) and the resultant cable core is covered with a non-hygroscopic tape
5. The SEALPIC cable sheath consists of 0.008 in. corrugated, polymer-coated aluminum shield and a black polyethylene jacket. The jacket is sequentially printed with a footage marker at regular intervals

### Technical Information & Standards

SEALPIC cable conforms to ANSI ICEA 85-625-1996

PE-22 is deactivated by RUS and superseded by ANSI/ICEA specifications

Anixter No.	No. of Pairs	Nom. AWG	Nom. O.D. (in.)	Approx. Wt. lb./1,000 ft.	Standard Reel Length (ft.)
E-000624AAC	6*	24*	0.350	54	5,000
E-001224AAC	12	24	0.420	81	5,000
E-002524AAC	25	24	0.520	131	5,000
E-005024AAC	50	24	0.660	224	5,000
E-010024AAC	100	24	0.880	402	5,000
E-020024AAC	200	24	1.170	750	5,000
E-060024AAC	600	24	1.920	2,113	2,500
E-090024AAC	900	24	2.310	3,104	1,250
E-000622AAC	6	22	0.390	69	5,000
E-001222AAC	12	22	0.470	107	5,000
E-002522AAC	25	22	0.600	184	6,000
E-005022AAC	50	22	0.760	324	5,000
E-030022AAC	300	22	1.710	1,600	2,500

\*Other pair counts and AWG are available.

## Outside Plant Aerial Cable



For use in exchange and campus areas, supported by a pre-installed messenger. Suitable for voice frequency, both analog and digital, on a selected pair assignment basis.

### SPECIFICATIONS

1. Solid, annealed, bare copper conductors
2. Solid polyolefin conductor insulation color-coded to telephone industry standards
3. Insulated conductors are twisted into pairs of varying lengths of lay to minimize crosstalk
4. Pairs are stranded into units (and super units if required by pair count) and the resultant cable core is covered with a non-hygroscopic tape. In cable sizes of 1,200 pair and greater, a mirror-image super-unit color-code system is adopted
5. The ALPETH cable sheath consists of 0.008 in., corrugated, aluminum shield and a black polyethylene jacket. The jacket is sequentially printed with a footage marker at regular intervals

### Technical Information & Standards

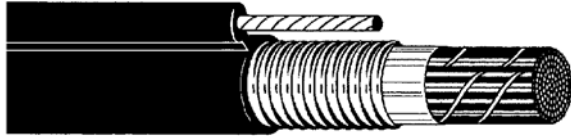
Cable conforms to Bellcore specifications

Anixter No.	Bell Code	No. of Pairs	Standard Length (ft.)	Nom. O.D. (in.)	Approx. Wt. lb./ft.
E-002524AAA	BKMA 25	24	8,000	0.520	0.13
E-005024AAA	BKMA 50	24	8,000	0.660	0.22
E-010024AAA	BKMA 100	24	8,000	0.880	0.39
E-020024AAA	BKMA 200	24	5,700	1.130	0.72
E-030024AAA	BKMA 300	24	5,000	1.380	1.02
E-040024AAA	BKMA 400	24	4,000	1.540	1.41
E-060024AAA	BKMA 600	24	3,100	1.830	2.05
E-090024AAA	BKMA 900	24	1,680	2.210	3.01

## Outside Plant Cable

# Exchange Cable

### RUS/REA Aerial Self-support



Designed exclusively for aerial installation. Suitable for voice frequency use on all pairs and carrier frequency, both analog and digital, on a selected pair assignment basis.

#### SPECIFICATIONS

1. Solid, annealed, bare copper conductors
2. Solid polyolefin conductor insulation color-coded to telephone industry standards
3. Insulated conductors are twisted into pairs of varying lengths of lay to minimize crosstalk
4. Pairs are stranded into units and the resultant cable core is covered with a non-hygroscopic tape
5. This cable is finished with a self-support SEALPIC-84 sheath. This sheath consists of a polymer-coated, corrugated aluminum shield and a 1/4 in., extra-high-strength, stranded steel messenger laid parallel to it with a common jacket of black polyethylene. The cross-sectional shape of this construction resembles a Figure 8

#### Technical Information & Standards

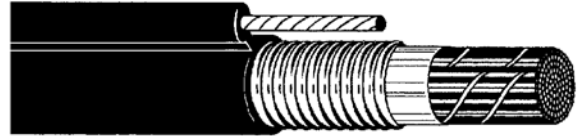
SEALPIC-84 conforms to ANSI/ICEA 85-625-1996

PE-38 is deactivated by RUS and superseded by ANSI/ICEA specification

Anixter No.	No. of Pairs	Messenger Nom. AWG Size (in.)	O.D. (in.)	Approx. Wt. lb./1,000 ft.	Standard Reel Length (ft.)	
E-000624AACF	6	24	0.25	0.810	204	5,000
E-001224AACF	12	24	0.25	0.880	230	5,000
E-002524AACF	25*	24*	0.25	0.980	279	5,000
E-005024AACF	50	24	0.25	1.120	369	5,000
E-010024AACF	100	24	0.25	1.360	557	2,500
E-000622AACF	6	22	0.25	0.850	219	5,000
E-001222AACF	12	22	0.25	0.930	255	5,000
E-002522AACF	25	22	0.25	1.060	330	5,000
E-005022AACF	50	22	0.25	1.240	478	5,000

\*Other pair counts and AWG are available.

### Outside Plant Cables - Aerial Self-support



Designed exclusively for aerial installation. Suitable for voice frequency use on all pairs and carrier frequency, both analog and digital, on selected pair assignment basis. BK\_P cables are rodent-resistant.

#### SPECIFICATIONS

1. Solid, annealed, bare copper conductors
2. Solid polyolefin conductor insulation color-coded to telephone industry standards
3. Insulated conductors are twisted into pairs of varying lengths of lay to minimize crosstalk
4. Pairs are stranded into units and the resultant cable core is covered with a non-hygroscopic tape

#### Technical Information & Standards

Cable conforms to Bellcore specifications

#### BK\_S SPECIFICATIONS:

This cable is finished with a self-support ALPETH sheath. This sheath consists of a corrugated aluminum shield and a 1/4 in., extra-high-strength, stranded steel messenger laid parallel to it with a common jacket of black polyethylene. The cross-sectional shape of this construction resembles a Figure 8.

Anixter No.	Bell Code	No. of Pairs	Standard AWG Length (ft.)	Nom. O.D. (in.)	Approx. Wt. lb./ft.	
E-005024AAAF	BKMS	50	24	6,400	0.800	0.39

# Outside Plant Cable Distribution Wire

## Distribution Wire Double PE Jacketed Filled Core



For distribution and subscriber drops in direct-burial applications.

### SPECIFICATIONS

1. Solid, annealed, bare copper conductors
2. Color-coded polyethylene insulation
3. Insulated conductors are twisted into pairs of varying lengths of lay to minimize crosstalk
4. Core-filled and flooded
5. Inner jacket of polyethylene
6. 0.008 in. smooth aluminum or 0.005 in. corrugated bronze shield
7. Outer polyethylene jacket

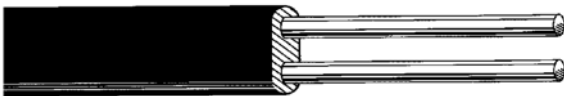
#### BPD SUFFIX, 0.008 SMOOTH ALUMINUM SHIELD

Anixter No.	Approx. Wt. lb./1,000 ft.	No. of Pairs	AWG	Nom. O.D. (in.)
F-02P24BPD	43	2	24	0.330
F-03P24BPD	46	3	24	0.330
F-02P22BPD	56	2	22	0.325
F-03P22BPD	59	3	22	0.325

#### BPN SUFFIX, 0.005 CORRUGATED BRONZE SHIELD

Anixter No.	Approx. Wt. lb./1,000 ft.	No. of Pairs	AWG	Nom. O.D. (in.)
F-03P22BPN	71	3	22	0.325
F-02P19BPN	85	2	19	0.400

## Parallel Conductors



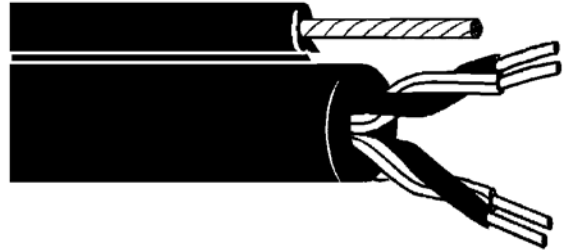
For aerial distribution in rural exchange areas. This product has an exceptionally tough insulation and large AWG size. It is intended for stringing through untrimmed trees or wherever abrasion concerns exist.

### SPECIFICATIONS

1. Conductors are 14 AWG copper-covered steel, 30 percent conductivity
2. Two conductors are laid parallel and insulated with a common jacket of black polyethylene

Anixter No.	No. of Conductors	AWG	Nom. O.D. (in.)	Approx. Wt. lb./1,000 ft.
F-02C14AC	2	14	0.165 x 0.280	42

## Twisted Pair Multiple Drop



Self-supporting IMREW wire is used for subscriber lines in exchange plant. Single pair is often used for lateral runs from aerial plant. Wire core is laid parallel to a solid steel support wire and jacketed in integral extrusion to form a Figure 8 configuration.

### SPECIFICATIONS

1. Conductors are 19 and 22 AWG solid annealed copper
2. Solid, high-density polyethylene
3. Conductors are twisted to form pairs
4. Messenger is 0.109 in., extra-high-strength galvanized steel
5. Outer jacket is black, high-molecular-weight polyethylene with integrated steel messenger, Figure 8

#### 19 AWG

Anixter No.	Vendor No.	No. of Pairs	Nom. O.D. (in.)	Approx. Wt. lb./1,000 ft.
F-03P19AAF	10-003-15	3	0.290	85
F-06P19AAF	10-006-15	6	0.390	120

#### 22 AWG

Anixter No.	Vendor No.	No. of Pairs	Nom. O.D. (in.)	Approx. Wt. lb./1,000 ft.
F-12P22AAG	10-012-17	12	0.370	115

Outside Plant Cable

# Cross-connect and Distribution Wire

Station Wire

SUPERIOR ESSEX



Used primarily as residential and small business distribution wire. Interior station wiring may extend to the building's network interface device (NID). The twisted-pair product is recommended for locations with multiple access lines.

**SPECIFICATIONS**

1. Solid copper conductors
2. Polyolefin insulation
3. PVC-jacketed
4. Can be used for indoor/outdoor applications

CATEGORY 3 TYPE CMX TWISTED-PAIR CONSTRUCTION  
 Rated CMR/CMX

Anixter No.	Vendor No.	No. of Pairs	AWG	Jacket Color	Standard Packaging
CMX-224PAB	12-402-37	2	24	Beige	1,000 ft. Knockout carton
CMX-424PAB	12-404-37	4	24	Beige	1,000 ft. Knockout carton

MULTICONDUCTOR CONSTRUCTION

CMX rated. Color code: red, green, yellow, black

Anixter No.	Vendor No.	AWG	No. of Conductors	Jacket Color	Standard Packaging
CMX-422CAG	12-114-33	22	4	Gray	1,000 ft. Knockout carton



## Dynatel Cable and Fault Locators 2220M, 2250 and 2273

3M

Dynatel Cable Locators find the exact path and estimated depth of CATV and telephone cables, as well as provide toning of aerial cable. Includes receiver and 3 in. inductive coupler.

Anixter No.	Vendor No.	Description
490654	2220M-U3W3-CPLR	Includes 3 watt transmitter, direct-connect cable with large alligator clips for power and cathodic protection systems
349510	2250-U3T3	Includes 3 watt transmitter, direct-connect cable with smaller alligator clips for telco and CATV applications
489500	2250-U3P3	Includes 3 watt transmitter, direct-connect cable with large alligator clips for telco/CATV applications
251184	2273-U3T3	Includes 3 watt transmitter, direct-connect cable with smaller alligator clips for telco and CATV applications, fault-locating accessories
251185	2273-U3P3	Includes 3 watt transmitter, direct-connect cable with large alligator clips for utility applications, fault-locating accessories
489501	2273-U5T3/A	Includes 5 watt transmitter, direct-connect cable with smaller alligator clips for utility applications, fault-locating accessories
443578	2273-U5P3/A	Includes 5 watt transmitter, direct-connect cable with large alligator clips for utility applications, fault-locating accessories

### ACCESSORIES

Anixter No.	Vendor No.	Description
301185	2200RB	Dynatel rechargeable battery for 5 and 12 watt transmitters 2250/2273 locators

## Dynatel Ultra Cable Locators 2250M and 2273M

3M

The Dynatel Cable/Pipe Locators represent the state of the art in underground-locating and fault-finding technology with outstanding speed, sensitivity and accuracy for cable locating, fault finding and 3M Electronic Marker System EMS marker locating.

Choose from three locating modes - directional peak, null or special peak - and select from up to 25 active and passive frequencies with the ability to enable and disable frequencies. Receivers incorporate an "expander" function to make peaks and nulls more pronounced and an external input jack for cable identification using the inductive coupler or toning of aerial cable using a toning coil.

The EMS-iD mode enables users to locate all standard electronic markers and read/write facility data to 3M EMS RFID markers. It is now compatible with select GPS/GIS field-mapping instruments for real-time mapping and electronic data transfer to back-office GIS systems. The transmitter includes fault-finding signal transmission and four locating frequencies to accommodate a wide range of field conditions with simultaneous-transmit of all four frequencies and induction on 33 kHz and 200 kHz.

### 2273M LOCATORS WITH EMS-RFID FEATURES

Anixter No.	Vendor No.	Description
490658	2250M-ID/UC3W-RT	Includes receiver with EMS-iD capabilities, 3 watt transmitter, 3 in. inductive coupler, direct-connect cable for telco/CATV applications
490659	2250M-ID/UC5W-RT	Includes receiver with EMS-iD capabilities, 5 watt transmitter, 3 in. inductive coupler, direct-connect cable for telco/CATV applications
251190	2273M-ID/UR	Includes receiver with EMS-iD locating capabilities for 2273M-ID locators
251191	2273M-ID/UC5W-RT	Includes receiver with EMS-iD capabilities, 5 watt transmitter, 3 in. inductive coupler, direct-connect cable for telco/CATV applications, fault-locating accessories
251192	2273M-UD/UU5W-RT	Includes receiver with EMS-iD locating capabilities, 5 watt transmitter, 3 in. inductive coupler, direct-connect cable for telco/CATV applications, fault-locating accessories
443579	2273M-ID/UCU12W-RT	Includes receiver with EMS-iD capabilities, 5 watt transmitter, 3 in. inductive coupler, direct-connect cable for telco/CATV applications, fault-locating accessories
251193	2273M-ID/UC3W-RT	Includes receiver with EMS-iD locating capabilities, 3 watt transmitter, 3 in. inductive coupler, direct-connect cable for telco/CATV applications, fault-locating accessories
490660	2273M-ID/UC3W-W/CASE	Includes receiver with EMS-iD capabilities, 3 watt transmitter, 3 in. inductive coupler, direct-connect cable for telco/CATV applications, fault-locating accessories, carrying case
251194	2273M-ID/UU3W-RT	Includes receiver, 3 watt transmitter, 3 in. inductive coupler, direct-connect cable for power/utility applications, fault-locating accessories

Continued on next page >>

## Outside Plant and Building Entrance

# Accessories

(continued) Dynatel Ultra Cable Locators 2250M and 2273M

### 2273M LOCATORS WITHOUT EMS-RFID FEATURES

Anixter No.	Vendor No.	Description
490661	2250M-UC3W-RT	Includes receiver, 3 watt transmitter, 3 in. inductive coupler, direct-connect cable for telco/CATV applications
490664	2250M-UC5W-RT	Includes receiver, 5 watt transmitter, 3 in. inductive coupler, direct-connect cable for telco/CATV applications
251195	2273M/UR	Receiver only for 2273M locators
251196	2273M/UC5W-RT	Includes receiver, 5 watt transmitter, 3 in. inductive coupler, direct-connect cable for telco/CATV applications, fault-locating accessories
251197	2273M/UU5W-RT	Includes receiver, 5 watt transmitter, 3 in. inductive coupler, direct-connect cable for power/utility applications, fault-locating accessories
251198	2273M/UC3W-RT	Includes receiver, 3 watt transmitter, 3 in. inductive coupler, direct-connect cable for telco/CATV applications, fault-locating accessories
490668	2273M-UC3W-W/CASE	Includes receiver, 3 watt transmitter, 3 in. inductive coupler, direct-connect cable for telco/CATV applications, fault-locating accessories, carrying case
251199	2273M/UU3W-RT	Includes receiver, 3 watt transmitter, 3 in. inductive coupler, direct-connect cable for power/utility applications, fault-locating accessories
490669	2273M-UCU12W/RT	Includes receiver, 12 watt transmitter, 3 in. inductive coupler, direct-connect cable for telco/CATV applications, fault-locating accessories

### ACCESSORIES

Anixter No.	Vendor No.	Description
301185	2200RB	Dynatel rechargeable battery for 5 and 12 watt transmitters

## Dynatel Extended-range Ball Markers 1400-XR Series

3M

### 1400-XR SERIES EXTENDED-RANGE BALL MARKERS

The 3M 4 in. extended-range ball markers have a self-leveling design ensuring an accurate, horizontal position regardless of how they are placed in the ground making the job of precisely locating underground power facilities easier. The ball marker contains a passive-tuned antenna, molded inside a plastic disk, which is free-floating inside a waterproof, polyethylene shell. The ball marker has a range of 5 ft. (1.5 m).

Anixter No.	Vendor No.	Description
251187	1401-XR	Telephone, passive
251188	1402-XR	Power, passive
251189	1407-XR	CATV, passive
443260	1405-XR	Gas, passive
443261	1408-XR	General purpose, passive
443262	1404-XR	Wastewater, passive
443264	1403-XR	Water, passive

### 1400-XR/ID SERIES EXTENDED-RANGE BALL MARKERS

These RFID markers come preprogrammed with a unique identification number. This preprogrammed number is also attached to the marker on a removable bar-coded tag, which can be peeled off before installation and attached to facility maps for future reference. When a 3M Dynatel Locator 1420 or 2200M-ID Series sends a "read" command signal, the RFID markers will respond by sending back data previously stored in them. The RFID markers can also be programmed and locked by the user via the 1420 and 2200M-ID series locators to include customer-specific information such as facility data hazard levels, type of application, placement date and other important details. After the locator has read this data, it may be transferred to the user's PC through a standard RS-232 communications port.

Anixter No.	Vendor No.	Description
307531	1421-XR/ID	Telephone, programmable
307533	1422-XR/ID	Power, programmable
307534	1423-XR/ID	Water, programmable
307535	1424-XR/ID	Wastewater, programmable
307536	1425-XR/ID	Gas, programmable
307537	1427-XR/ID	Command for CATV application, programmable
307538	1428-XR/ID	General purpose/reclaimed water application, programmable

## Locators

3M

3M Dynatel locators provide accurate locating of critical underground assets.

Anixter No.	Vendor No.	Cable/ Pipe Locate	Earth		Coupler Size (in.)
			Return Fault Locate	Electronic Marker Locate	
309234	1420	No	No	Yes	3
489505	2220M-C3W-CPLR	Yes	No	No	3
349510	2250-U3T3	Yes	No	No	3
490658	2250M-ID/UC3W-RT	Yes	No	Yes	3
490659	2250M-ID/UC5W-RT	Yes	No	Yes	3
495186	2250M-UC5W-RT	Yes	No	Yes	3
495187	2250M-UCU12W-RT	Yes	No	No	3
443576	2573-U12	Yes	Yes	No	4.5
251184	2273-U3T3	Yes	Yes	No	3
251185	2273-U3P3	Yes	Yes	No	3
443578	2273-U5P3/A	Yes	Yes	No	3
251198	2273M/UC3W-RT	Yes	Yes	No	3
490668	2273M-UC3W-W/CASE	Yes	Yes	No	3
251199	2273M/UU3W-RT	Yes	Yes	No	3
251196	2273M/UC5W-RT	Yes	Yes	No	3
443579	2273M-ID/UCU12W-RT	Yes	Yes	No	3
251191	2273M-ID/UC5W-RT	Yes	Yes	Yes	3
251197	2273M/UU5W-RT	Yes	Yes	No	3
251193	2273M-ID/UC3W-RT	Yes	Yes	Yes	3
490660	2273M-ID/UC3W-W/CASE	Yes	Yes	Yes	3
251194	2273M-ID/UU3W-RT	Yes	Yes	Yes	3

## Marker-Mate Electronic Marker Locator System

GREENLEE



The Marker-Mate Electronic Marker Locator System is designed to locate all brands of buried electronic markers, including the patented Tempo Omni Marker and Uni Marker.

### FEATURES

- 5 ft.-plus depth range
- Detects up to seven different marker types
- Scan mode provides simultaneous detection of all marker types
- User-adjustable detection threshold
- Digital signal processor accuracy
- Large-character display is easy to read

## MARKER-MATE LOCATOR

Anixter No.	Vendor No.	Description
267613	EML100	Electronic marker locator

## OMNI MARKER BALLS

Anixter No.	Vendor No.	Description
310707	160	Omni marker, power - red
310708	0161-0001-1	Omni marker, water - blue
310709	162	Omni marker, sanitary - green
310710	0163-0001-1	Omni marker, telephone - orange
310711	0164-0001-1	Omni marker, gas - yellow
310712	0165-0001-1	Omni marker, cable TV - orange/black
310713	0168-0001-1	Omni marker, nonpotable water - purple

## Tracker II Underground-cable Locator

GREENLEE



The Tracker II traces the path and determines the depth of wires and metallic pipes on active or dead systems without having to deactivate the system. The transmitter has a distance range of up to 4,000 ft. and depth up to 7 ft. Transmitter output and receiver sensitivity are adjustable.

### FEATURES

- Lightweight receiver provides audible and visual indications of signal strength
- Transmitter output and receiver sensitivity are fully adjustable for maximum accuracy
- Transmitter offers three methods of connection: direct, inductive coupler and inductive antenna
- High-frequency transmitter provides range up to 4,000 ft. (1,219 m) and depths up to 7 ft. (2 m)

Anixter No.	Vendor No.	Description
105450	501	Tracker II cable locator
074224	IC1	Inductive coupler
123023	HS-1	Headset

## Outside Plant and Building Entrance

# Accessories

### Single Wall High-density Polyethylene (HDPE)



Single Wall HDPE has superior crush resistance, stiffness and impact strength with outstanding flexibility. The light weight and superior flexibility of this corrugated polyethylene innerduct gives the benefit of being easier to handle at the job site and means less wear and tear on expensive pipe placement equipment. All sizes of Single Wall HDPE come complete with a pre-installed 900 pound traceable pull rope.

#### APPLICATIONS

Placed inside existing duct.

#### SINGLE WALL HDPE

Orange

Anixter No.	Description
398945	0.5 in.
398946	0.75 in.
224514	1 in.
224515	1.25 in.
224517	1.5 in.
224518	2 in.
398947	3 in.

#### FITTINGS

White

Anixter No.	Description
399158	Coupling for 0.5 in. Single and Dual Wall HDPE
399159	Coupling for 0.75 in. Single and Dual Wall HDPE
399160	Coupling for 1 in. Single and Dual Wall HDPE
399161	Coupling for 1.25 in. Single and Dual Wall HDPE
399162	Coupling for 1.5 in. Single and Dual Wall HDPE
399163	Coupling for 2 in. Single and Dual Wall HDPE
399164	Adapter for 1 in. Single and Dual Wall HDPE
399165	Adapter for 1.25 in. Single and Dual Wall HDPE
399166	Adapter for 1.5 in. Single and Dual Wall HDPE
399167	Adapter for 2 in. Single and Dual Wall HDPE

Other colors are available upon request.  
Please contact your local sales representative for further details.

### Dual Wall High-density Polyethylene (HDPE)



Dual Wall HDPE is a heavy-duty high-density polyethylene innerduct with a corrugated exterior and a smooth interior. The interior has longitudinal ribs which greatly reduce friction in cable pulling. Dual Wall HDPE has the impact, crush and stiffness characteristics of a solid wall innerduct, but at half the weight. This lightweight feature provides the job site benefit of easier handling, resulting in less wear and tear on expensive innerduct placement equipment. Dual Wall HDPE also has less memory; if you are open trench placing the innerduct it will lie flat and not try to re-coil. All sizes of Dual Wall HDPE come complete with a pre-installed 900 pound traceable pull rope.

#### APPLICATIONS

Direct bury or placed inside existing duct.

#### DUAL WALL HDPE

Orange

Anixter No.	Description
398951	1.25 in.
398952	1.5 in.
398953	2 in.
398954	3 in.

#### FITTINGS

White

Anixter No.	Description
399158	Coupling for 0.5 in. Single and Dual Wall HDPE
399159	Coupling for 0.75 in. Single and Dual Wall HDPE
399160	Coupling for 1 in. Single and Dual Wall HDPE
399161	Coupling for 1.25 in. Single and Dual Wall HDPE
399162	Coupling for 1.5 in. Single and Dual Wall HDPE
399163	Coupling for 2 in. Single and Dual Wall HDPE
399164	Adapter for 1 in. Single and Dual Wall HDPE
399165	Adapter for 1.25 in. Single and Dual Wall HDPE
399166	Adapter for 1.5 in. Single and Dual Wall HDPE
399167	Adapter for 2 in. Single and Dual Wall HDPE

Other colors are available upon request.  
Please contact your local sales representative for further details.

## Solid Wall High-density Polyethylene (HDPE)



Solid Wall HDPE is a nonmetallic innerduct that offers superior protection. All sizes of Solid Wall HDPE come complete with a pre-installed 900 pound traceable pull rope. Solid Wall is also referred to as Smooth Wall.

### APPLICATIONS

Direct bury or placed inside existing duct.

#### SOLID WALL HDPE

SDR 11, smooth exterior/smooth interior, orange

Anixter No.	Description
398948	0.5 in.
398949	0.75 in.
332768	1 in.
332769	1.25 in.
332770	1.5 in.
332771	2 in.
332773	3 in.
332774	4 in.
398950	5 in.

#### FITTINGS

White

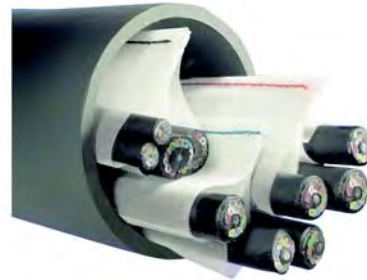
Anixter No.	Description
399168	Coupling for 0.5 in. Solid Wall HDPE
399169	Coupling for 0.75 in. Solid Wall HDPE
399170	Coupling for 1 in. Solid Wall HDPE
399171	Coupling for 1.25 in. Solid Wall HDPE
399172	Coupling for 1.5 in. Solid Wall HDPE
399173	Coupling for 2 in. Solid Wall HDPE

SDR 11 is available in other colors and/or ribbed interior upon request. Other styles also available upon request are SDR 9, SDR 13.5, SDR 15.5, SDR 17, Schedule 40 and Schedule 80.

Please contact your local sales representative for further details.

## Outdoor-rated Textile Innerduct

MAXCELL GROUP



MaxCell is the only flexible, multicelled, textile innerduct specifically designed for the network-construction industry. The unique textile construction allows MaxCell to conform to the shape of cables placed within, greatly reducing the wasted space associated with rigid innerduct. It is available in multiple configurations and lengths. MaxCell textile innerduct can reduce labor costs by 33 percent and improve your bottom line. MaxCell maximizes conduit space, minimizes costs and allows for overlay installations without breaking ground. MaxCell's flexibility allows for installation over existing cables - saving one costly construction and labor costs.

### STANDARD PRODUCT LINE

The standard MaxCell product is a versatile solution for the complex problems faced by engineers, contractors and network providers. Manufactured from internally produced monofilaments, this model yields superior performance over existing rigid innerduct.

Anixter No.	Vendor No.	Description
312606	MXC3456BK250	3 in., 3-cell, 250 ft. reel, black
312599	MXC3456BK500	3 in., 3-cell, 500 ft. reel, black
312596	MXC3456BK1000	3 in., 3-cell, 1,000-2,649 ft. reel, black
312593	MXC3456BK2650	3 in., 3-cell, 2,650-5,299 ft. reel, black
312601	MXC3456BK5300	3 in., 3-cell, 5,300-9,999 ft. reel, black
375626	MXC3456BK10000	3 in., 3-cell, 10,000 ft. reel, black
312616	MXC2002PR250	2 in., 2-cell, 250 ft. reel, purple
312615	MXC2002PR500	2 in., 2-cell, 500 ft. reel, purple
312614	MXC2002PR1000	2 in., 2-cell, 1,000-2,649 ft. reel, purple
375627	MXC2002PR2650	2 in., 2-cell, 2,650-5,299 ft. reel, purple
375628	MXC2002PR5300	2 in., 2-cell, 5,300-9,999 ft. reel, purple
375629	MXC2002PR10000	2 in., 2-cell, 10,000 ft. reel, purple
312612	MXC2003YL250	2 in., 3-cell, 250 ft. reel, yellow
312611	MXC2003YL500	2 in., 3-cell, 500 ft. reel, yellow
312610	MXC2003YL1000	2 in., 3-cell, 1,000-2,649 ft. reel, yellow
312609	MXC2003YL2650	2 in., 3-cell, 2,650-5,299 ft. reel, yellow
312600	MXC2003YL5300	2 in., 3-cell, 5,300-9,999 ft. reel, yellow
375631	MXC2003YL10000	2 in., 3-cell, 10,000 ft. reel, yellow
375632	MXC4003GR250	4 in., 3-cell, 250 ft. reel, green
375633	MXC4003GR500	4 in., 3-cell, 500 ft. reel, green
312613	MXC4003GR1000	4 in., 3-cell, 1,000-2,649 ft. reel, green
345913	MXC4003GR2650	4 in., 3-cell, 2,650-5,299 ft. reel, green
375634	MXC4003GR5300	4 in., 3-cell, 5,300-9,999 ft. reel, green
348562	MXC4003GR10000	4 in., 3-cell, 10,000 ft. reel, green
375635	MXC2001WH250	2 in., 1-cell, 250 ft. reel, white
375636	MXC2001WH500	2 in., 1-cell, 500 ft. reel, white

Continued on next page >>

## Outside Plant and Building Entrance

# Accessories

### (continued) Outdoor-rated Textile Innerduct

Anixter No.	Vendor No.	Description
375637	MXC2001WH1000	2 in., 1-cell, 1,000-2,649 ft. reel, white
375638	MXC2001WH2650	2 in., 1-cell, 2,650-5,299 ft. reel, white
375639	MXC2001WH5300	2 in., 1-cell, 5,300-9,999 ft. reel, white
375640	MXC2001WH10000	2 in., 1-cell, 10,000 ft. reel, white

#### DETECTABLE PRODUCT LINE

Detectable MaxCell is configured like the standard product, but contains an 18-gauge solid copper core tracer wire inserted in the edge for use in underground utility location. An embedded feature, Detectable MaxCell will not entangle or impede cable installation nor increase cable pulling tensions. The wire is permanent and will not be removed as is the case with detectable pulling tapes. In addition, the wire is protected, which means no damage to it or the cables and ensuring locate ability for years to come.

Anixter No.	Vendor No.	Description
375641	MXD3456BK250	3 in., 3-cell, 250 ft. reel, black
375642	MXD3456BK500	3 in., 3-cell, 500 ft. reel, black
375643	MXD3456BK1000	3 in., 3-cell, 1,000-2,649 ft. reel, black
375644	MXD3456BK2650	3 in., 3-cell, 2,650-5,299 ft. reel, black
375645	MXD3456BK5300	3 in., 3-cell, 5,300-9,999 ft. reel, black
375646	MXD3456BK10000	3 in., 3-cell, 10,000 ft. reel, black
375647	MXD2002PR250	2 in., 2-cell, 250 ft. reel, purple
375648	MXD2002PR500	2 in., 2-cell, 500 ft. reel, purple
375649	MXD2002PR1000	2 in., 2-cell, 1,000-2,649 ft. reel, purple
375650	MXD2002PR2650	2 in., 2-cell, 2,650-5,299 ft. reel, purple
375651	MXD2002PR5300	2 in., 2-cell, 5,300-9,999 ft. reel, purple
375652	MXD2002PR10000	2 in., 2-cell, 10,000 ft. reel, purple
375653	MXD2003YL250	2 in., 3-cell, 250 ft. reel, yellow
375654	MXD2003YL500	2 in., 3-cell, 500 ft. reel, yellow
375655	MXD2003YL1000	2 in., 3-cell, 1,000-2,649 ft. reel, yellow
375656	MXD2003YL2650	2 in., 3-cell, 2,650-5,299 ft. reel, yellow
375657	MXD2003YL5300	2 in., 3-cell, 5,300-9,999 ft. reel, yellow
375658	MXD2003YL10000	2 in., 3-cell, 10,000 ft. reel, yellow
375659	MXD4003GR250	4 in., 3-cell, 250 ft. reel, green
375660	MXD4003GR500	4 in., 3-cell, 500 ft. reel, green
375661	MXD4003GR1000	4 in., 3-cell, 1,000-2,649 ft. reel, green
375662	MXD4003GR2650	4 in., 3-cell, 2,650-5,299 ft. reel, green
375663	MXD4003GR5300	4 in., 3-cell, 5,300-9,999 ft. reel, green
375664	MXD4003GR10000	4 in., 3-cell, 10,000 ft. reel, green
375665	MXD2001WH250	2 in., 1-cell, 250 ft. reel, white
375666	MXD2001WH500	2 in., 1-cell, 500 ft. reel, white
375667	MXD2001WH1000	2 in., 1-cell, 1,000-2,649 ft. reel, white
375668	MXD2001WH2650	2 in., 1-cell, 2,650-5,299 ft. reel, white
375669	MXD2001WH5300	2 in., 1-cell, 5,300-9,999 ft. reel, white
375670	MXD2001WH10000	2 in., 1-cell, 10,000 ft. reel, white

#### MAXCELL ACCESSORIES

Anixter No.	Vendor No.	Description
312617	MXC2CH	Installation kit, two-way harness
312618	MXC3CH	Installation kit, three-way harness
312619	MXCIGC	CO2 gas cartridge
312620	MXCIK11	Single-pack pull swivel
312621	MXCIK21	Two-pack pulls/harness swivels

Anixter No.	Vendor No.	Description
312622	MXCIK31CH	Three-pack pulls/harness swivels
312623	MXCITB3	Inflatable bag termination for 3 in. OD conduit
312624	MXCITB4	Inflatable bag termination for 4 in. OD conduit
312625	MXCITB5	Inflatable bag termination for 5 in. OD conduit
312626	MXCITB6	Inflatable bag termination for 6 in. OD conduit
312627	MXCITT	Inflation tool. Requires MaxCell MXCIGC gas cartridge
312628	MXCSW	Installation swivel
312629	MXCTBSET070	Watertight bushing set for 0.7 in. hole
312630	MXCTBSET090	Watertight bushing set for 0.9 in. hole
312631	MXCTBSET110	Watertight bushing set for 1.1 in. hole
312632	MXCTP4	Watertight split plug for 4 in. duct
312633	MXCTP6	Watertight split plug for 6 in. duct

The Standard and Detectable 3 in., 3-cell products are also available in red and blue. Both product lines offer the choice of a custom color as well. For more information, contact your local sales representative.

### TerraTape for Buried Cable Applications

#### REEF INDUSTRIES

TerraTape underground marking systems are the industry standard for effective protection of buried pipelines and utilities. Preventing accidental breaks in pipes or cables from digging activities, TerraTape alerts workmen to cease immediately and avert the potential for costly inconveniences or accidents. Manufactured in detectable and nondetectable constructions, TerraTape is available in a variety of background and print colors, strengths and thicknesses and can be custom-imprinted with any message in all known languages. TerraTape, a time-tested and performance-proven value.

#### TERRATAPE STANDARD, 3 IN. NONDETECTABLE

Tape reads "Caution \_\_\_\_\_ Cable Buried Below"

Anixter No.	Vendor No.	Description	Length
251442	42-0001	Fiber optic	1,000 ft.
251444	42-0005	Fiber optic	6,000 ft.
251445	42-0003	Telephone	1,000 ft.
251446	42-0006	Telephone	6,000 ft.
251447	42-0002	CATV	1,000 ft.
251448	42-0004	Communications	1,000 ft.

#### TERRATAPE STANDARD, 6 IN. NONDETECTABLE

Tape reads "Caution \_\_\_\_\_ Cable Buried Below"

Anixter No.	Vendor No.	Description	Length
251449	42-0008	Fiber optic	1,000 ft.
251450	42-0011	Fiber optic	6,000 ft.
251451	42-0010	Telephone	1,000 ft.
251452	42-0007	Communications	1,000 ft.

# Accessories

TERRATAPE EXTRA STRETCH, 3 IN. NONDETECTABLE  
Tape reads "Caution \_\_\_\_\_ Cable Buried Below"

Anixter No.	Vendor No.	Description	Length
251454	42-0021	Fiber optic	1,000 ft.
251455	42-0026	Fiber optic	6,000 ft.
251456	42-0024	Telephone	1,000 ft.
251457	42-0027	Telephone	6,000 ft.
251458	42-0022	CATV	1,000 ft.

TERRATAPE EXTRA STRETCH, 6 IN. NONDETECTABLE  
Tape reads "Caution \_\_\_\_\_ Cable Buried Below"

Anixter No.	Vendor No.	Description	Length
251459	42-0028	Fiber optic	1,000 ft.
251460	42-0033	Fiber optic	6,000 ft.
251462	42-0030	Telephone	1,000 ft.

TERRATAPE SENTRY LINE, DETECTABLE  
Tape reads "Caution \_\_\_\_\_ Cable Buried Below"

Anixter No.	Vendor No.	Description	Length
251463	42-0039	Communications	3 in. x 1,000 ft.
251464	42-0037	Fiber optic	3 in. x 1,000 ft.
251465	42-0040	Fiber optic	6 in. x 1,000 ft.

## GWP Ground Wire

For grounding telephone station protectors, interface units, equipment grounds, cabinet grounds, shield grounds and shield continuity connections cable splices. Conductors are either solid or stranded copper. Both feature weather-resistant PVC insulation.

Anixter No.	AWG	Description
6G-0601-04	6	Stranded, green
6G-0601-02	6	Stranded, black
6VP-0601SOL	6	Solid, black

## Galvanized Steel Strand



All strand is 7-wire, Class A Galvanized and meets ASTM-A475.

Anixter No.	Vendor No.	Description	Qty.
243628	1/4EHS A250CL	1/4 in. extra-high strength	250 ft.
243626	1/4EHS A500CL	1/4 in. extra-high strength	500 ft.
243625	1/4EHS A1000RL	1/4 in. extra-high strength	1,000 ft.
104975	1/4EHS A2500RL	1/4 in. extra-high strength	2,500 ft.
208640	1/4EHS A5000RL	1/4 in. extra-high strength	5,000 ft.
271386	5/16EHS A2500RL	5/16 in. extra-high strength	2,500 ft.
313348	5/16EHS A5000RL	5/16 in. extra-high strength	5,000 ft.
159633	5/16UTA2500RL	5/16 in. utility	2,500 ft.
313349	5/16UTA5000RL	5/16 in. utility	5,000 ft.
313354	3/8EHS A2500RL	3/8 in. extra-high strength	2,500 ft.

Anixter No.	Vendor No.	Description	Qty.
313355	3/8EHS A5000RL	3/8 in. extra-high strength	5,000 ft.
159634	3/8UTA2500RL	3/8 in. utility	2,500 ft.
313353	3/8UTA5000RL	3/8 in. utility	5,000 ft.
313356	7/16EHS A2500RL	7/16 in. extra-high strength	2,500 ft.
040895	7/16UTA2500RL	7/16 in. utility	2,500 ft.
313358	1/2EHS A5000RL	1/2 in. extra-high strength	5,000 ft.
313357	1/2UTA5000RL	1/2 in. utility	5,000 ft.

## DURA-TY Cable Ties - Weather-resistant Acetal

PANDUIT

### FEATURES

- Excellent solution for outdoor applications requiring strength and durability
- Ideal for securing cables in outdoor messenger strand applications and vertical ladder racks
- Excellent ultraviolet light, chemical and moisture resistance
- Double stainless steel locking barbs with high tensile strength and high-impact resistance
- Meets Telcordia TR-TSY-00789 industry guidelines for lashed cable supports



### EXTRA-HEAVY CROSS SECTION

Minimum loop tensile strength: 250 lb., width: 0.50 in.

Anixter No.	Vendor No.	Length (in.)	Max. Bundle Dia. (in.)	Std. Pkg. Qty.
249889	DT4EH-LO	13.5	3.88	50
249891	DT8EH-QO	27.0	8.00	25
351841	DT14EH-LO	48.0	14.00	50
351845	DT15EH-LO	53.0	15.00	50
351848	DT28EH-CO	96.0	28.00	100
351850	DT44EH-CO	144.0	44.00	100

### STACKABLE CABLE SPACER

Each spacer snaps into another to increase spacer heights by 1/2 in. increments.

Anixter No.	Vendor No.	Description
073362	SACS50-T100	2.08 x 1.16 in. weather-resistant polypropylene, black

### STRAPPING, HEADS AND KIT - HEAVY CROSS SECTION

Anixter No.	Vendor No.	Description
367880	DTRH-LRO	50 ft. reel of strapping heads (25)
367888	DTHH-QO	Cable tie heads (25)
367889	DTKH-0	Kit (strapping: 50 ft., heads: 25)

### STRAPPING, HEADS AND KIT - EXTRA-HEAVY CROSS SECTION

Anixter No.	Vendor No.	Description
DTREH-LRO	DTREH-LRO	50 ft. reel of strapping
DTHEH-QO	DTHEH-QO	Heads (25)
249893	DTKEH-0	Kit (strapping: 50 ft., heads: 25)

## Outside Plant and Building Entrance

# CommScope Carrier Solutions BEP

### 5-pin Protector Modules

COMMSCOPE CARRIER SOLUTIONS



Lightning, power crosses and voltage transients can damage or destroy equipment. Protector modules suppress the excess voltage and send it to earth ground. Protector modules are available in gas tube, solid-state or hybrid designs. Note that all protection modules are five-pin unless otherwise specified. Protector modules are available in black for standard service and red for special circuits.

Anixter No.	Vendor No.	Description	Test Points	Material ID
350239	9A1A-HT	Hybrid without sneak current, 300 to 400 V DC, black	Yes	760058503
350240	9A3A-HT	Hybrid without sneak current, 300 to 400 V DC, red	Yes	760058529

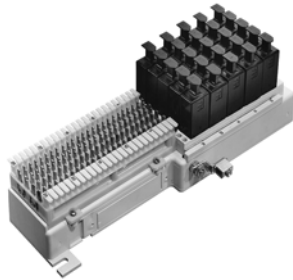
Anixter No.	Vendor No.	Description	Test Points	Material ID
105114	3B1EW	Gas tube without heat coils, 280 to 420 V DC, black	No	104410147
545340	3B3EW	Gas tube without heat coils, 280 to 420 V DC, red	No	104410162
350207	3C1EW	Gas tube without heat coils, 280 to 420 V DC, red, black	Yes	760065706
350212	3C3EW	Gas tube without heat coils, 280 to 420 V DC, red	Yes	760065714
104878	4B1EW	Gas tube with heat coils, 425 V DC, black	No	104401856
120204	4B3EW	Gas tube with heat coils, 425 V DC, red	No	104401872
350232	4C1EW	Gas tube with heat coils, 425 V DC, black	Yes	104401898
350235	4C3EW	Gas tube with heat coils, 425 V DC, red	Yes	104401914
375036	4R1AN-180	3-element gas tube (350 V), resettable 2.2 ohm PTCs, black housing, no test access	Yes	760075960
375037	4R3AN-180	3-element gas tube (350 V), resettable 2.2 ohm PTCs, red housing, no test access	Yes	760075978
375038	4R1AT-180	3-element gas tube (350 V), resettable 2.2 ohm PTCs, black housing, test access	Yes	760075986
375039	4R3AT-180	3-element gas tube (350 V), resettable 2.2 ohm PTCs, red housing, test access	Yes	760075994
350236	9A1A-HN	Hybrid without sneak current, 300 to 400 V DC, black	No	760058495
350238	9A3A-HN	Hybrid without sneak current, 300 to 400 V DC, red	No	760058511



# Emerson BEP

## R66P25 Series 25-pair Protector

EMERSON NETWORK POWER ENERGY



The R66P25QC offers protection for 25 pairs with quick-connect clips for both input and output cable pairs. The unit has the same mounting dimensions as a standard 66M block, and can be mounted on a wall, frame or 89 bracket. Order standard five-pin protector modules separately. One per pair. Requires a 66-termination tool.

Anixter No.	Vendor No.	Description
092738	R66P25QC	25-pair 66 quick-clip in / 66 quick-clip out

## BEPNC Building Entrance Terminal (Indoor)

EMERSON NETWORK POWER ENERGY



The BEPNC series combines protection and distribution for a single, compact, cost-effective unit designed for indoor building entrance applications. Central Office pairs are connected with the following options: stub, 710 connectors, 3M dry connectors, 66 quick clip block, 110-style block including Emerson pair-at-a-time tool-less URLS-style block. The BEPNC also offers a 26 AWG fuse link for added protection. Subscribers' wires are connected via the following options: 66 quick-clip, 110-style block or Emerson URLS block.

The BEPNC series is available in 100-, 50-, 25- or 10-pair sizes. All BEPNC Terminals can be stackable (recommend six units). The protector modules can be included or purchased separately.

Anixter No.	Vendor No.	Pair Size	Input	Output
266782	F1005286	50	66 quick clip	66 quick clip
266783	BEPNCC25C	25	66 quick clip	66 quick clip
266784	BEPNCC10C	10	66 quick clip	66 quick clip

### ACCESSORIES

Anixter No.	Vendor No.	Description
266791	BEPNC110COVER1	100-pair BEPNC cover kit for 110-blk stub/non-stub
266794	BEPNC66COVER2	50-pair BEPNC cover kit for 66-blk stub/non-stub

Anixter No.	Vendor No.	Description
266795	BEPNC110COVER3	25-pair BEPNC cover kit for 110-blk stub/non-stub
266797	BEPNC110COVER4	10-pair BEPNC cover kit for 110-blk stub/non-stub
266798	BEPNC66COVER4	10-pair BEPNC cover kit for 66-blk stub/non-stub

## NetReach BEP Series (Indoor) Integrated Building Entrance Solution

EMERSON NETWORK POWER ENERGY



The NetReach BEP Series combines protection and distribution with a built-in splice chamber for a single, compact, cost-effective unit designed for indoor building entrance applications. The BEP Series offers a 26 AWG fuse link for added protection. It is available in 25-, 50- and 100-pair sizes. The 100-pair unit is stackable to 300-pair. These protectors come equipped with protective covers. RUS listed. The NetReach BEP Series with RLS output now comes with Cat 5 cable on the output and tight-twist cable on the input as standard.

Anixter No.	Vendor No.	Pair Size	Input	Output
220825	BEPC100C	100	66 quick clip	66 quick clip
220824	BEPC50C	50	66 quick clip	66 quick clip
220823	BEPC25C	25	66 quick clip	66 quick clip
106240	BEPCG100C	100	66 quick clip	66 quick clip and RJ21
158291	BEPC100CF	100	710 connector	66 quick clip
198911	BEPC50CF	50	710 connector	66 quick clip
198910	BEPC25CF	25	710 connector	66 quick clip
133362	BEPCG100FS	100	18 in. splice tail	66 quick clip and RJ21
133361	BEPCG50FS	50	18 in. splice tail	66 quick clip and RJ21

## Outside Plant and Building Entrance

# Emerson BEP

NetReach BUP Series (Indoor/Outdoor), Integrated Building Entrance Solution

EMERSON NETWORK POWER ENERGY



The NetReach BUP Series building entrance protectors, designed for outdoor use, require no additional housings or enclosures. Central office pairs are connected by a splice tail, and central office protector modules are mounted in a sealed chamber for protection against the weather. UL Listed five-pin modules may be used. (Order modules separately). These units are GR-937-CORE-compliant.

Anixter No.	Vendor No.	Description
397583	BUPBNG100FS	100-pair field splice tail/in - BT screw terminal block/out
375953	BUPBNG50FS	50-pair field splice tail/in - BT screw terminal block/out
397590	BUPBNG25FS	25-pair field splice tail/in - BT screw terminal block/out
220828	BUPSNG100FS	100-pair field splice tail/in - RLS IDC block/out - now available with Cat 5 and tight-twist cable as standard
220827	BUPSNG50FS	50-pair field splice tail/in - RLS IDC block/out - now available with Cat 5 and tight-twist cable as standard
220826	BUPSNG25FS	25-pair field splice tail/in - RLS IDC block/out - now available with Cat 5 and tight-twist cable as standard

Tech Tips

TeleLinx

Using building entrance protection?

By code (NEC, Article 800), building entrance protectors must be installed whenever conductive communications cabling enters or leaves a building. This protection device must be agency-listed (i.e. UL 497) and placed within the first 50 ft. of the building entrance. Be sure your protection has the appropriate UL/CSA listing for your application.

All ITW Linx protection products are listed to the current appropriate standard.

Five-pin Solid-state Protector Modules

ITW LINX



Protect low-voltage communications equipment from transient voltage surges and overcurrent conditions on voice and data lines with 100 percent solid-state protector modules and sneak current fuses. These five-pin protector modules are UL Listed as primary and/or secondary protectors and can be used with any standard building entrance terminal including the ITW Linx patented TeleLinx.

VOICE/FAX MODEM LINES 350 MA FUSES (PRIMARY AND SECONDARY)

Anixter No.	Vendor No.	Description
250501	FPP4-75	75 V

VOICE/FAX MODEM LINES 160 MA PTC (SECONDARY ONLY)

Anixter No.	Vendor No.	Description
250510	FPP6-75	75 V
250511	FPP6-235	235 V

Tech Tips

Why Choose Solid State over Gas Tube?

The main technology types of today's surge protection devices are gas-tube arrestors and solid-state devices. The main differences between these are technology and price. So why pay more for the better technology of solid state? Today, equipment is extremely sensitive to surges; whereas older electro-mechanical equipment could handle most types of surges fairly well. Solid-state devices therefore are critical to ensure that today's equipment remains protected. The main technology difference between the two devices is clamping time, or the time it takes to remove the surge off the line. Gas tubes take 4,000 to 5,000 nanoseconds, whereas solid-state devices take only 2 to 5 nanoseconds. This time equates to distance, with the relation of 1 nanosecond equal to 1 ft. down the conductive path. Therefore, if you use gas tube protectors, your equipment WILL see the surge in almost all cases, but going with solid-state will keep you protected. Solid state arrestors are superior in speed, voltage control and long life.

SurgeGate 1 Gigabit and 10 Gigabit - Category 6 and Category 6A 4-pair Protection Modules

ITW LINX



For use with high-performance outside plant cables (OSP) in campus applications and UTP plenum cable in hostile industrial environments. The patented ITW Linx SurgeGate Category 6 LAN module protects sensitive electronic workstations, network equipment and communications cables from damage caused by transient voltage surges, including lightning, without harming data integrity. The Cat 6-235 module is for use when trying to run voice at Cat 6 performance. Solid-state circuitry within the protector reacts quickly (1 to 5 nanoseconds) to prevent surges from reaching the equipment. UL Listed under UL 497 (primary protector for building entrances) and UL 497B (isolated loop protector) as well as ANSI/TIA-758-A and 568-C for Cat 6. Multiple modules can be connected together (SurgeGate) to protect additional pairs and can be connected with SurgeGate AC base units providing additional customized and expanded protection. Modules are easily connected together and provide a single-point ground; dimensions are 4.25 in. H x 4.25 in. W x 1.42 in. D.

ITW Linx offers a lifetime product warranty and up to \$50,000 connected equipment warranty on all SurgeGate units.

Anixter No.	Vendor No.	Description
271862	CAT6-LAN	Protects 4-pair Cat 6-rated cable, 16 V clamping, 110 in/110 out
271864	CAT6-235	Protects 4-pair Cat 6-rated cable, 235 V clamping, 110 in/110 out
271863	CAT6-75	Protects 4-pair Cat 6-rated cable, 75 V clamping, 110 in/110 out - used on Cisco PoE applications
274955	CAT6-POE	Power over Ethernet protector, protects 4-pair Cat 6-rated cable, 16 V clamping (data pairs) and 68 V clamping (power pairs), 110 in/110 out
434551	CAT6A-LAN	Protects 4-pair, Cat 6A-rated cable, 16 V clamping, 110 in/110 out

## Outside Plant and Building Entrance

# ITW Linx BEP

### SurgeGate Category 5e 4-pair Protection Modules

ITW LINX



For use with high-performance outside plant cables (OSP) in campus applications and UTP plenum cable in hostile industrial environments. The patented ITW Linx SurgeGate Category 5e LAN module protects sensitive electronic workstations, network equipment and communications cables from damage caused by transient voltage surges, including lightning, without harming data integrity. The Cat5-235 module is for use when trying to run voice at Cat 5e performance. Solid-state circuitry within the protector reacts quickly (1 to 5 nanoseconds) to prevent surges from reaching the equipment. UL Listed for 497 (primary protector for building entrances) and 497B (isolated loop protection) as well as ANSI/TIA-758 and 568-C for Category 5e. Multiple modules can be connected together to protect additional pairs and can be connected with SurgeGate AC base units providing additional customized and expanded protection. Modules are easily connected together and provide a single point ground. Dimensions are 4.25 in. H x 4.25 in. W x 1.42 in. D.

ITW Linx offers a lifetime product warranty and up to \$50,000 connected equipment warranty on all SurgeGate units.

Anixter No.	Vendor No.	Description
194862	CAT5-LAN	Protects 4-pair, Cat 5e-rated cable, 16 V clamping, 110 in/110 out
304803	CAT5-75	Protects 4-pair, Cat 5e-rated cable, 75 V clamping, 110 in/110 out - used on Cisco PoE applications
259045	CAT5-235	Protects 4-pair, Cat 5e-rated cable, 235 V clamping, 110 in/110 out
250573	CAT5-LAN-RJ45	Protects 4-pair, Cat 5e-rated cable, 16 V clamping, RJ45 in/out
304804	CAT5-75-RJ45	Protects 4-pair, Cat 5e-rated cable, 75 V clamping, RJ45 in/out - used on Cisco PoE applications
265862	CAT5-235-RJ45	Protects 4-pair, Cat 5e-rated cable, 235 V clamping, RJ45 in/out
274798	CAT5-POE	Protects 4-pair, Cat 5e-rated cable, 16 V clamping (data pairs) and 62 V clamping (power pairs), 110 in/110 out

### Category 5e 25-pair Protector

ITW LINX



The patented Category 5e 25-pair protector from ITW Linx provides 100 percent solid-state protection to protect network, telecommunications and electronic equipment from transient voltage surges. Protects high-performance 25-pair Cat 5e outside plant cables as well as 110 punch-down Cat 5e UTP cables for LAN/Data, T1/ISDN and IP camera applications, is UL Listed for 497 (primary protector for building entrances) and 497B (isolated loop protection), and exceeds ANSI/TIA-758. The unit mounts on an 89D bracket and encloses all protection parts in a plastic covered housing. Each pair in the module uses the Cat 5e circuit card technology to ensure total protection.

Anixter No.	Vendor No.	Description
206303	ML25-CAT5-LAN	Cat 5e 25-pair building entrance protector - includes base unit, 25 protector cards and grounding hardware, 16 V clamp
265842	ML25-CAT5-235	Cat 5e 25-pair building entrance protector - includes base unit, 25 protector cards and grounding hardware, 235 V clamp
265843	CC-CAT5-16	Package of four, single-pair protection cards (16 V clamping). Use as replacements or in combination with Linx CC-CAT5-235 cards to mix Cat 5e protection with telecommunications protection
265844	CC-CAT5-235	Package of four, single-pair protection cards (16 V clamping). Use as replacements or in combination with Linx CC-CAT5-16 cards to mix Cat 5e protection with telecommunications protection

DataLinx Protected Patch Panels

ITW LINX



The new ITW Linx DataLinx series provides solid-state primary (UL 497) and isolated loop (UL 497B) protection for your LAN, Voice over IP, Video over IP and Power over Ethernet. The DL1200-T1A series is UL Listed secondary (UL 497A) and includes 160 mA overvoltage protection for T1/ISDN lines. ITW Linx offers a lifetime product warranty and up to \$5,000 connected equipment warranty on all DataLinx units.

FEATURES

- 12 ports with replaceable 4-port card modules
- 110 punch-down input to RJ45 output
- Power over Ethernet protector meets IEEE 802.3af standard
- Single-height, 19 in., rack-mountable chassis (1U)
- Used between buildings in a campus environment as a building entrance protector

DL-1200 PROTECTED PATCH PANELS

Anixter No.	Vendor No.	Description
262045	DL1200	DataLinx 1200 - 12-port Cat 5e, UL Listed primary (UL 497) Ethernet protector, 16 V clamping, 110 punch-down input/output
265006	DL1200-POE	DataLinx 1200 - 12-port Cat 5e, UL Listed primary (UL 497) Power over Ethernet protector per IEEE 802.3af, 16 V clamping data pairs, 62 V power pairs, 110 punch-down input/output
400593	DL-1200-CAT5	DataLinx 1200 - 12-port Cat 5e, UL Listed primary (UL 497) Ethernet protector, 16 V clamping, RJ45 in/out

DL-1200 REPLACEMENT CARDS

Anixter No.	Vendor No.	Description
266162	DL1200-RC-16	For DL1200
266163	DL1200-RC-POE	For DL1200 PoE per IEEE 802.3af

66 Block UltraLinx Protection Modules

ITW LINX



FEATURES

- Fits all 66 Type M blocks (can accommodate blocks wired for 25 or 50 pairs)
- Dual indicator lights - protection OK and ground OK
- Solid-state protection - provides the fastest response to transient voltages (<5 nanoseconds) by quickly diverting damaging surges to ground and automatically resetting
- Single-pair protection - scale the protection to the system. Protect only the lines requiring protections
- Streamline installation - eliminate redundant cross-connects by adding protection directly at the block. Press fit protectors to the block attaching the ground bar (MGB-SGL) to the protectors
- Optimum protection - available in a number of voltage sizes to match system operating voltages
- Ideal for retrofit applications - just remove the bridging clips from the block and replace them with the UltraLinx protector. Add the ground connection and the pair is protected
- Sneak current protection - protects against fires and injuries caused by overloaded and power crosses

VOICE/FAX/MODEM LINES - 350 MA FUSES (PRIMARY AND SECONDARY)

Anixter No.	Vendor No.	Description
266125	UP3B-27	27 V
266126	UP3B-39	39 V
266127	UP3B-75	75 V
266128	UP3B-235	235 V, 350 mA, 1 pair
330699	UP3B-7.5	7.5 V
330701	UP3B-16	16 V
321736	UP3P-100	100 V

VOICE/FAX/MODEM LINES - 160 MA PTCS (SECONDARY ONLY)

Anixter No.	Vendor No.	Description
266129	UP3P-27	27 V
266130	UP3P-39	39 V
266131	UP3P-75	75 V
266132	UP3P-235	235 V
321736	UP3P-100	100 V

Continued on next page >>

## Outside Plant and Building Entrance

# ITW Linx BEP

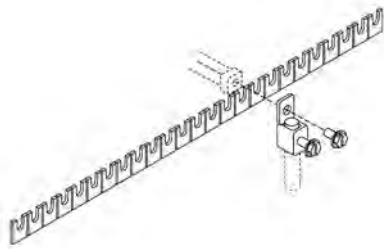
*(continued)* 66 Block UltraLinx Protection Modules

T1/ISDN/E1 XDSL/LAN - 160 MA PTCS (SECONDARY ONLY)

Anixter No.	Vendor No.	Description
266133	UP3H-27	27 V
266134	UP3H-39	39 V
266135	UP3H-75	75 V
266136	UP3H-235	235 V
330703	UP3H-100	100 V

### Multiple Ground Bus Bar and Screw Ground Lug

ITW LINX



The Multiple Ground Bus Bar allows for the common grounding of multiple Ultron and UltraLinx lightning protectors on the same 66M block and can connect up to 25 protectors (one protector per pair). The bus bar is equivalent to a No. 6 AWG wire and is made of tin-plated copper. The bar is scored on both sides, allowing it to be broken into smaller sections for cost-efficient and customized usage. 10 in. long, 1/2 in. high.

The Screw Ground Lug provides for the connection of the common ground wire to the Multiple Ground Bus Bar and Ultron/UltraLinx series lightning protectors. The Screw Ground Lug accepts up to a No. 6 AWG wire. Please be careful to match the proper ground wire gauge (AWG) to the number of installed protectors. For use with Ultron/UltraLinx 66 block protectors.

Anixter No.	Vendor No.	Description
265923	MGBSGL-1	Multiple ground bus bar and screw ground lug

# Preformed Line Products OSP

## ARMADILLO Stainless Splice Closure

PREFORMED LINE PRODUCTS



These versatile splice cases will accommodate an extremely wide range of cables, effectively maintaining an airtight, watertight seal around most types of cable, including lead or plastic jacketed, single or double systems, through-cable systems, preconnected and pressurized or nonpressurized systems. Closure remains secure in overhead and underground applications, in hot, dry, warm, wet or cold environments.

The LOCKBAR fastener system features front and back bars that fit into the splice case flange. The back bar has factory-assembly nuts and bolts attached, which mate up with the keyholes in the front bar. Splice case shells are stainless steel with an inner liner of neoprene. Fasteners are also stainless steel. End plates are made from hard plastic and filled with a rigid polyurethane foam. Insulated torque bars keep the end plates secure and in alignment during installation and re-entry.

Holes in end plates need to be drilled with the power end plate cutter kit or can be ordered factory drilled.

Anixter No.	Vendor No.	Inside Diameter (in.)	OA Length (in.)	Max. Number of Pairs 26-24-22
005575	8000624	4.0	25	300
207652	8006326	6.5	22	600
005576	8000626	6.5	22.4	1,100
266990	8006320	8.0	25	2,100
009952	8000630	8.5	28.4	5,400
266991	8006219	12.5	28.4	3,000
020388	8000634	6.5	38.4	1,500
266992	8006321	8.0	38.4	2,400
009953	8000635	9.5	38.4	3,600
132751	8006220	12.5	38.4	3,600
266993	8006322	8.0	45	2,700
158605	8006176	9.5	45.2	4,200
266994	8006221	12.5	45	4,200
208539	8006668	9.5	53	4,200

## ARMADILLO Splice Closures with Filling Flange

PREFORMED LINE PRODUCTS

Preformed ARMADILLO Stainless Splice Closures for pressurized cable cannot be filled with encapsulant unless a special filling flange is mounted on the stainless steel shell, or a pressure wrap kit is used. Contact your local sales representative for more information.

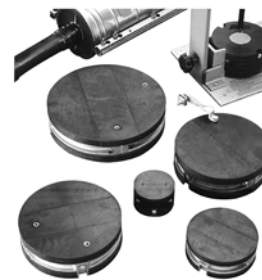
### FEATURES

- May be gravity filled
- Adaptable for pressure-filled system
- Can also be used for air systems

Anixter No.	Vendor No.	Max. Number of Pairs 26-24-22	Size (in.)
266995	8006366	300	4 x 25
266996	8006429	600	6.5 x 22
226496	8006367	600	6.5 x 28
266997	8006410	2,100	8 x 28
226999	8006368	2,700	9.5 x 28
266998	8006372	3,000	12.5 x 28
241969	8006369	1,500	6.5 x 38
267000	8006411	2,400	8 x 38
267001	8006370	3,600	9.5 x 38
169262	8006373	3,600	12.5 x 38
267002	8006412	2,700	8 x 45
267003	8006371	4,200	9.5 x 45
267004	8006701	4,200	9.5 x 53
267005	8006374	4,200	12.5 x 45

## ARMADILLO Drillable End Plate Kits

PREFORMED LINE PRODUCTS



Standard two-section kits are used as a replacement when adding branch cable to an existing splice. Kit includes two end plates, LOCK-TAPE sealant, Cue Cards, CABLE Mea-SURE Tape.

Optional three-section end plates allow adding extra cables on a 6.5 in., 8 in., 9.5 in. and 12.5 in. diameter splice case. Kit includes one end plate, LOCK-TAPE sealant, Cue Cards, CABLE Mea-SURE Tape. Holes in end plates need to be drilled with the Power End Plate Cutter Kit or the end plates can be ordered predrilled from the manufacturer.

Continued on next page >>

## Outside Plant and Building Entrance

# Preformed Line Products OSP

*(continued)* ARMADILLO Drillable End Plate Kits

END PLATE KITS WITH NO INSERTS

Anixter No.	Vendor No.	Diameter (in.)	Style
267006	8003539	4	Two Section
267007	8003540	6.5	Two Section
267008	8003541	8	Two Section
267009	8003542	9.5	Two Section
267010	8003284	12.5	Two Section
267011	8000361	6.5	Three Section
267012	8003110	8	Three Section
009957	800081098	9.5	Three Section
132750	8003055	12.5	Three Section

END PLATE KITS WITH GROUND ONLY

Anixter No.	Vendor No.	Diameter (in.)	Style
267013	8003550	4	Two Section
267014	8003551	6.5	Two Section
267015	8003552	8	Two Section
267016	8003553	9.5	Two Section
267017	8003554	12.5	Two Section
267018	8003094	6.5	Three Section
267019	8003532	8	Three Section
267020	8003013	9.5	Three Section
267021	8003534	12.5	Three Section

END PLATE KITS WITH AIR VALVE ONLY

Anixter No.	Vendor No.	Diameter (in.)	Style
267022	8003555	4	Two Section
267023	8003556	6.5	Two Section
267024	8003557	8	Two Section
267025	8003558	9.5	Two Section
267026	8003559	12.5	Two Section
267027	80805422	6.5	Three Section
267028	8003137	8	Three Section
267029	8003321	9.5	Three Section
267030	8003122	12.5	Three Section

END PLATE KITS WITH GROUND AND AIR VALVE

Anixter No.	Vendor No.	Diameter (in.)	Style
267031	8003560	4	Two Section
267032	8003561	6.5	Two Section
267033	8003562	8	Two Section
267034	8003563	9.5	Two Section
267035	8003564	12.5	Two Section
267036	80805365	6.5	Three Section
267037	8003533	8	Three Section
267038	8005376	9.5	Three Section
267039	8003367	12.5	Three section

### ARMADILLO Sealing Washer End Plates

PREFORMED LINE PRODUCTS



The ARMADILLO Sealing Washer End Plates incorporate universal inserts that allow grounding connections and air pressurization through the end plate. In addition, this design includes a cable-entry plug spool for plugging unused ports while allowing for future use. ARMADILLO Sealing Washer End Plates also feature a two-piece sealing washer that is stronger and eliminates the seam on sealing washers. These sealing washers are available in the same diameters as competitive units and may be cut on the job site with our easy and safe washer cutter tool or they may be cut with competing cutters.

Anixter No.	Vendor No.	Diameter (in.)	Description
267040	8003514	4	2-port
267041	8003515	6.5	1-port
267042	8003516	6.5	2-port
267043	8003517	6.5	3-port
267044	8003518	8	1-port
267045	8003519	8	2-port
267046	8003520	8	3-port
267047	8003521	9.5	2-port
267048	8003522	9.5	3-port

### ARMADILLO Sealing Washers

PREFORMED LINE PRODUCTS

Each Sealing Washer Kit Contains Four Sealing Washer Halves Of The Same Size, The Quantity Required For One Cable-entry Port Of An Armadillo Sealing Washer End Plate.

Anixter No.	Vendor No.	Description
267049	8003543	1 in. sealing washer kit
267050	8003544	1.6 in. sealing washer kit
267051	8003545	2.2 in. sealing washer kit
267052	8003546	2.8 in. sealing washer kit
267053	8003547	3.4 in. sealing washer kit



# Preformed Line Products OSP

## ARMADILLO Stainless Shell Kits

PREFORMED LINE PRODUCTS



Armadillo Stainless Shells Are Precision-formed Of Stainless Steel With An Inside Liner Of Neoprene. They Feature A Permanent Gasket-sealing System That Requires No Re-entry Kit Or Cleaning Upon Re-entry And An Integral Air Flange And Grounding Lead That Allow Pressurization And Grounding Through The Shell. The Lockbar Fastener System Features Corrosion-resistant, Stainless Steel Front And Back Bars That Mate Through The Flange Area And Lock Into Position To Reduce Installation Time.

### STANDARD SHELL KITS WITH AIR FLANGE AND GROUND LEAD

Anixter No.	Vendor No.	Description
267081	8006750	4 in. x 25 in.
267082	8006510	6.5 in. x 22 in.
267083	8006474	6.5 in. x 28 in.
267084	8006751	6.5 in. x 38 in.
267085	8006776	8 in. x 28 in.
267086	8006777	8 in. x 38 in.
267087	8006778	8 in. x 45 in.
267088	8006779	9.5 in. x 28 in.
267089	8006780	9.5 in. x 38 in.
267090	8006781	9.5 in. x 45 in.
267091	8003461	9.5 in. x 53 in.
267092	8006782	12.5 in. x 28 in.
267093	8006783	12.5 in. x 38 in.
267094	8006784	12.5 in. x 45 in.
267095	8006509	12.5 in. x 65 in.

### FILLING FLANGE SHELL KITS

Anixter No.	Vendor No.	Description
267096	8006756	4 in. x 25 in.
267097	8006390	6.5 in. x 22 in.
267098	8006244	6.5 in. x 28 in.
267099	8006246	6.5 in. x 38 in.
267100	8006391	8 in. x 28 in.
267101	8006392	8 in. x 38 in.
267102	8006393	8 in. x 45 in.
267103	8006245	9.5 in. x 28 in.
267104	8006247	9.5 in. x 38 in.
267105	8006250	9.5 in. x 45 in.
267106	8006758	9.5 in. x 53 in.
267107	8006274	12.5 in. x 28 in.
267108	8006275	12.5 in. x 38 in.
267109	8006276	12.5 in. x 45 in.

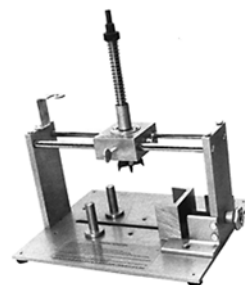
## Splice Closure Parts and Accessories

PREFORMED LINE PRODUCTS

Anixter No.	Vendor No.	Description
035774	80801566	Shell lubricant
199794	80801953	LOCK-TAPE sealant, (DR tape), 1 1/2 in. x 12 ft.
267142	8000480	Sealing washer cutter kit, includes washer cutter, spare blade and tote bag
267143	8000481	Blades for washer cutter, three
183136	80802377	C-Cement, 4 oz. can
397924	80806434	Cable R-Sealant
397925	80806592	Prep tape

## Power End Plate Cutter Kit and Accessories

PREFORMED LINE PRODUCTS



The Power End Plate Cutter provides a fast, convenient method of cutting precise cable access holes in end plates. Furnished standard with 26 blades from 0.375 in. to 3.50 in. in diameter, with four additional blades for larger sizes up to 4 in. available. Kit includes a cable measure tape for accurately measuring cable diameter and selecting correct blade size. Includes carrying case.

Anixter No.	Vendor No.	Description
267153	8000452	Power end plate cutter (only) - one unit
128344	8000454	Power end plate cutter and case with blade - one kit
267154	8000455	Power end plate cutter and case with standard blade - one kit
267155	8000468	Power end plate cutter lift kit - one kit
267156	8000445	Carrying case
267157	8000453	Blade kit (A-Z)
267158	8000457A-D	Individual blades (A-D)
267159	8000417E-DD	Individual blades (E-DD)
267160	80851659	Electric drill with socket
267161	80801944	Drill motor adapter (for other than Preformed drill)
395843	80803377	Cutting blade adapter - one unit

# Outside Plant and Building Entrance

## Preformed Line Products OSP

### BLACK-JACK 25 and 50 Pair Closures

PREFORMED LINE PRODUCTS



The BLACK-JACK 25 and 50 Pair Closures are filled with POLY-BEE Sealant to provide long-term protection for direct-buried cable. The sealant forms a barrier to protect splices against the harsh elements of nature. The closure design incorporates a water-block system that consists of a soft cable grommet and a gasket seam seal. The soft grommet effectively seals around cables within the accepted diameter range of 0.46 in. to 0.75 in. The gasket seals the halves of the closure to further ensure protection.

The BLACK-JACK 25 Pair Closure is now available in both the traditional butt-splice version and the inline version. The inline version can be used for main or branch cable applications. Both designs offer the same reliable service, are easily re-entered and must be replaced after re-entry.

The one-piece closure shell is shipped with the entire water-block system in place. The unit is prefilled with POLY-BEE sealant, so there is no resin mixing required. Without resin, preparation time is greatly reduced. Setup time is also eliminated. This means the closure can be buried immediately after installation. Working without resin eliminates toxic material concerns and inventory waste because shelf life is never an issue.

Anixter No.	Vendor No.	Description
160573	8006318	25-pair butt-splice version
170677	8006508	25-pair inline-splice* version
245361	8006681	50-pair inline* version

\*Inline splice is shown above

### Ranger SERVICEAL Closures

PREFORMED LINE PRODUCTS



Newly enhanced, the Ranger SERVICEAL Closure provides long-term protection for buried service wire splices up to six pairs (0.500 in. cable diameter).

#### FEATURES

- New design - only two components, prefilled vial cap and integral insertion ram and bonding connector
- Vial prefilled with field-proven POLY-BEE sealant for maximum splicing capacity
- Octagon-shaped vial for easy application and maximum splicing capacity
- Enhanced integral bonding connector
- Positive-locking feature to ensure proper application and to discourage reuse

Anixter No.	Vendor No.	Description
095846	8006137	Ranger SERVICEAL Closures

### Super SERVICEAL Closure

PREFORMED LINE PRODUCTS



Newly enhanced, the Super SERVICEAL Closure is designed for buried service-wire splice applications. Each Super SERVICEAL closure kit is furnished complete with a POLY-BEE Sealant-filled vial, and an integral insertion ram and bonding connector. No mixing or waiting is required. SERVICEAL Closures are ready for immediate use. Side grooves on the cap accept all service wire sizes up to 12 pair. New vials must be used for re-entry procedures.

#### FEATURES

- One size to accommodate up to 12-pair wire
- One-piece grooved cap for ease of installation
- Larger, more-convenient bonding clamp
- Newly enhanced design with integral insertion ram and bonding connector
- Prefilled vial with POLY-BEE Sealant is ready for immediate field use - no mixing of resins
- Unlimited shelf life
- Rugged, re-enterable plastic construction (not reusable)

Anixter No.	Vendor No.	Description
076008	8006039	0.4 in. to 0.6 in. cable

### Shield Connectors

PREFORMED LINE PRODUCTS



#### MULTI-BOND SHIELD CONNECTOR

The MULTI-BOND Shield Connector offers a reliable bonding harness for organizing telecommunications buried service wires and achieving an electrical bond between the cables and ground. The compact MULTI-BOND Shield Connector is designed to be used in multiple service distribution. It's a simple, sure and safe cable organizer.

Anixter No.	Vendor No.	Description
267164	8003072	Bonding support plate, lug, clamps, five screws and nuts

# Preformed Line Products OSP

## MORAY AND MINI-MORAY SHIELD CONNECTOR

The specifically designed teeth of the MORAY and MINI-MORAY Shield Connectors penetrate the polymer coating on cable shield to provide excellent pullout strength and electrical contact. The "reverse rake"-patterned teeth provide a secure bite into the cable shield while two teeth under the spring-action connector top keep it from letting go of the cable sheath. No tabbing shears or tools required to apply.

Anixter No.	Vendor No.	Description
267165	8000745	MORAY shield connector
267166	8000751	MINI-MORAY shield connector

## COYOTE ONE Closure

### PREFORMED LINE PRODUCTS



The COYOTE ONE Closure is the latest addition to PLP's line of dome closures and will soon become the one to specify. The COYOTE ONE is designed with PLP's patented segmented end plate, which allows independent access to each cable port. The dome design with hinged collar speeds assembly and simplifies re-entry. When combined with PLP's versatile grommet system and LITE-GRIP splice trays, the COYOTE ONE has the capacity to support 120 single-fusion or 144 mass-fusion splices. Compact size and a full line of accessories make this new closure the ONE to choose.

### FEATURES

- Patented 3-port segmented end plate allows for independent access
- Size: 16 in. L x 10 in. W x 5.7 in. H (406 mm x 254 mm x 145 mm)
- Max. splice capacity: (120) single fusion (80809958 tray), (144) mass fusion (LGSTR144 tray)
- Configuration: butt/expressed splice
- Ground stud quantity: three
- Hinged collar system allows for quick re-entry
- No special tools required
- Integrated air valve for flash-testing closure seal
- Tested in accordance to Telcordia GR-771-CORE
- Direct buried, manhole, aerial or pole/wall mount
- Flexible grommet sealing system supports a wide range and quantity of flat or round cable profiles
- Ideal for FTTH deployment and back-haul networks

### COYOTE ONE CLOSURE KITS

All kits include: end plate with organizer assembly, dome, gasket, two 8003663 grommets, one 8003665 grommet and cable restraint hardware.

Anixter No.	Vendor No.	Description
494875	COY1-001	With buffer tube organizer
494949	COY1-002	With universal organizer for ribbon or buffer tube

## COYOTE ONE CLOSURE ACCESSORIES

Anixter No.	Vendor No.	Description
494950	80811036	6-port drop cable retention bobbin kit
494952	80811037	4-port cable retention bobbin kit
494954	8004005	Aerial strand mounting hardware
494955	8004027	Aerial strand mounting hardware, adjustable
494959	8004031	Aerial strand ADSS mounting hardware
494960	8004032	Aerial ADSS mounting hardware
494962	8004004	Pole-/wall-mount hardware
494963	8003835	6.5 in. x 17 in. and 6.5 in. x 22 in. underground mount

## COYOTE Terminal Closure

### PREFORMED LINE PRODUCTS



The COYOTE Terminal Closure is the ideal choice for network designs that can be adapted as your network grows. The Terminal Closure is available in a single- or dual-chamber configuration. Externally mounted OptiTap style hardened adapters allow for future installation of hardened drops without closure re-entry. Additional drop capacity can be achieved through cable-entry ports in the closure base, providing additional flexibility to support closures deeper in your network. The patented dual-chamber design provides two distinct chambers that can be configured differently. Each chamber can support externally mounted hardened adapters, standard splice and storage applications or an internally mounted cross-connect bulkhead. A sealed window designed within the dual chamber allows fiber to be passed between chambers. With a new 12-port cover, the single chamber design can support up to 12 hardened adapters and the dual chamber can support up to 24. The flexible grommet system, the ability to add/remove adapters in the field and the ability to interchange covers to address different applications make the COYOTE Terminal Closure family the best choice for networks today where change is the only constant.

### FEATURES

- Innovative end-plate design features two 1 1/4 in. ports at each end of the closure
- Features the latest generation of COYOTE end plate and seal system technology
- User-friendly express capabilities
- Simple installation - no special tools or torque wrench required
- Interoperability with Corning Cable Systems products

Continued on next page >>

## Outside Plant and Building Entrance

# Preformed Line Products OSP

### (continued) COYOTE Terminal Closure

Anixter No.	Vendor No.	Description
311962	8006956	17.5 in. x 10 in. x 7 in. (445 mm x 254 mm x 178 mm) COYOTE Terminal Closure - dual chamber, hermetically sealed - includes six SC/APC pigtails and bulkhead with six SC/APC feed-thru adapters
311964	8006953	17.5 in. x 10 in. x 4.75 in. (445 mm x 254 mm x 121 mm) COYOTE Terminal Closure - single chamber, hermetically sealed - includes four OptiTap hardened adapters and four SC/APC pigtails
311965	8006954	17.5 in. x 10 in. x 4.75 in. (445 mm x 254 mm x 121 mm) COYOTE Terminal Closure - single chamber, hermetically sealed - includes six OptiTap hardened adapters and six SC/APC pigtails
311967	8006955	17.5 in. x 10 in. x 4.75 in. (445 mm x 254 mm x 121 mm) COYOTE Terminal Closure - single chamber, hermetically sealed - includes eight OptiTap hardened adapters and eight SC/APC pigtails
371405	80061067	17.5 in. x 10 in. x 6 in. (445 mm x 254 mm x 150 mm) COYOTE Terminal Closure - single chamber, hermetically sealed - includes 12 OptiTap hardened adapters and 12 SC/APC pigtails

- Configurations to support single fusion, ribbon and mechanical splice applications
- Simple installation - no special tools or torque wrench required
- Designed for aerial, below grade or direct buried applications
- Flat shape allows for mounting in small spaces

Anixter No.	Vendor No.	Description
371481	COYLCC-F001	For single fusion with 7-hole and 12-hole grommet and splice platform
371482	COYLCC-F002	For single fusion with 7-hole and 12-hole grommet, splice platform and bobbin kit
371483	COYLCC-F003	For ribbon with two 2-hole grommets and splice platform
371484	COYLCC-F004	For single fusion with two 7-hole grommets and splice platform
371485	COYLCC-F005	For single fusion with two 2-hole grommets and splice platform
395851	COYLCC-F006	For single fusion with two 4-hole grommets and splice platform
395852	COYLCC-C001	For copper - includes two 1-hole grommets with 0.4 in. to 0.6 in. cable range, two MINI-MORAY shield connectors and one bonding link with sleeve
395853	COYLCC-C002	For copper - includes two 2-hole grommets, two MINI-MORAY shield connectors, and one bonding link with sleeve
395854	COYLCC-C003	For copper - includes two 1-hole grommets with 0.85 in. to 1.0 in. cable range, two MINI-MORAY shield connectors and one bonding link with sleeve
395868	COYLCC-C004	For copper - includes one 2-hole grommet, one 8003691 grommet, two MINI-MORAY shield connectors and one bonding bridge

### COYOTE LCC (Low-Count Closure)

#### PREFORMED LINE PRODUCTS



The COYOTE LCC (Low-Count Closure) is the latest addition to the COYOTE Fiber Optics product line for your fiber to the home, node or curb deployment. The LCC's compact size, use of Preformed's versatile grommet system and internal LITE-GRIP Splice Platform make this rugged closure the economical choice for low-count installations and critical repair situations. Feature focus video available at [www.Preformed.com](http://www.Preformed.com).

#### FEATURES

- Compact size: 17 in. x 7 in. x 2.5 in. (432 mm x 178 mm x 64 mm)
- Splice capacity: maximum 12 mechanical, 24 single fusion, 72 mass fusion (ribbon)
- Capable of butt or inline applications
- Easy-to-use grommet system offered in a wide variety of single- and multihole designs

### COYOTE In-Line RUNT Closure

#### PREFORMED LINE PRODUCTS



The COYOTE In-Line RUNT Closure has the versatility and features that make it the perfect choice for distribution and fiber-to-the-premises networks. At 17.5 in. L x 10 in. W x 3.5 in. D, it fits easily into tight spaces like pedestals and handholes. The unique end-plate design and silicone grommet sealing system simplifies installation, and the field-proven design and familiarity of the COYOTE Fiber-Management System save time. In addition, the COYOTE In-Line RUNT Closure is fully compatible with the existing line of COYOTE accessories such as silicone grommets and splice trays. A new flame-retardant design is now available.

# Preformed Line Products OSP

## FEATURES

- Dimensions: 17.5 in. x 10 in. x 3.5 in. (445 x 254 x 89 mm)
- Splice capacity: maximum 24 mechanical, 48 single-fusion, 72 mass-fusion splices
- Innovative end-plate design features two 1 1/4 in. ports at each end of the closure
- Simple installation - no special tools or torque wrench required
- Craft-friendly and familiar COYOTE Fiber-Management System
- Compatibility - shares the same accessories with other closures in the COYOTE Series
- Features the latest generation of COYOTE end plate and seal system technology
- User-friendly express capabilities

Anixter No.	Vendor No.	Description
311970	8006951	Hermetically sealed
371492	80061049	Flame retardant

## COYOTE Dome Closure

### PREFORMED LINE PRODUCTS



The COYOTE Dome closures have the versatility and features that make it a perfect choice for fiber-to-the-premise networks. Both the 6.5 in. and 9.5 in. dome closure designs use PLP's patented segmented end-plate system which allows independent access to each cable port without disruption to surrounding cables.

## FEATURES

- Four sizes:
  - 6.5 in. x 17 in. (218 mm x 453 mm)
  - 6.5 in. x 22 in. (218 mm x 574 mm)
  - 9.5 in. x 19 in. (292 mm x 509 mm)
  - 9.5 in. x 28 in. (292 mm x 749 mm)
- Segmented end-plate design provides independent access to every cable
- Configuration: butt/expressed splice
- Port quantity: four in the 6.5 in. (218 mm) end plate; seven in the 9.5 in. (292 mm) end plate
- Ground stud quantity: four in the 6.5 in. (218 mm) end plate; seven in the 9.5 in. (292 mm) end plate
- Application: direct buried, below grade, pole-/wall-mount or aerial
- Quick to assemble, no special tools required
- Tested in accordance to GR-771-CORE by an independent outside lab
- Available in flame-retardant material
- Collar system allows for quick re-entry
- Flexible grommet sealing technology supports a wide range and quantity of flat or round cable profiles
- Inline options available

## COYOTE DOME CLOSURE 6.5 IN. X 17 IN. (218 X 453 MM) KITS

All 6.5 in. (218 mm) dome kits shown include: one end plate with organizer assembly, one dome, one gasket, one small parts bag, two 8003701 grommets and cable-restraint hardware.

Anixter No.	Vendor No.	Description
282337	8006944	With buffer tube/loose tube organizer
494979	8006945	With unitube/ribbon organizer
494980	800012940	With buffer tube organizer, flame-retardant
494981	800012941	With unitube/ribbon organizer, flame-retardant

## COYOTE DOME CLOSURE 6.5 IN. X 22 IN. (218 X 574 MM) KITS

All 6.5 in. (218 mm) dome kits shown include: one end plate with organizer assembly, one dome, one gasket, one small parts bag, two 8003701 grommets and cable-restraint hardware.

Anixter No.	Vendor No.	Description
282335	8006877	With buffer tube/loose tube organizer
494982	8006878	With unitube/ribbon organizer
494984	800012942	With buffer tube organizer, flame-retardant
494988	800012943	With unitube/ribbon organizer, flame-retardant

## COYOTE DOME CLOSURE 9.5 IN. X 19 IN. (292 X 509 MM) KITS

All 9.5 in. (292 mm) dome kits shown include: one end plate with organizer assembly, one dome, one gasket, one small parts bag, two 8003692 grommets, two 8003693 grommets and cable-restraint hardware.

Anixter No.	Vendor No.	Description
494989	800013691	With buffer tube organizer
494990	800013692	With unitube/ribbon organizer

## COYOTE DOME CLOSURE 9.5 IN. X 28 IN. (292 X 749 MM) KITS

All 9.5 in. (292 mm) dome kits shown include: one end plate with organizer assembly, one dome, one gasket, one small parts bag, two 8003692 grommets, two 8003693 grommets and cable-restraint hardware.

Anixter No.	Vendor No.	Description
371410	80061055	With buffer tube organizer
371411	80061056	With unitube/ribbon organizer
494991	80061057	With max tray organizer (buffer tube/ loose tube or buffered ribbon applications)

## COYOTE DOME CLOSURE ACCESSORIES

Anixter No.	Vendor No.	Description
494992	8003681	End-plate kit for 6.5 in. (218 mm)
494993	8003839	End-plate kit for 9.5 in. (292 mm)
494994	80808651	Long strength member bracket kit, includes four brackets
494995	80809205	Short strength member bracket kit, includes two brackets
494950	80811036	6-port drop cable retention bobbin kit
494996	80808878	Large strength member adapter kit
494997	80807848	End-plate gasket for 6.5 in. (218 mm) closure
494998	80809045	End-plate gasket for 9.5 in. (292 mm) closure
494999	80808456	End-plate assembly fixture for 6.5 in. (218 mm) or 9.5 in. (292 mm) closure
494952	80811037	4-port cable retention bobbin kit
495001	8004035	6.5 in. x 17 in. and 6.5 in. x 22 in. aerial strand mounting hardware

Continued on next page >>

# Outside Plant and Building Entrance

## Preformed Line Products OSP

*(continued)* COYOTE Dome Closure

Anixter No.	Vendor No.	Description
495003	8004036	6.5 in. x 17 in. and 6.5 in. x 22 in. aerial ADSS mounting hardware
495006	8003702	6.5 in. x 17 in. and 6.5 in. x 22 in. pole-/wall-mount hardware
494963	8003835	6.5 in. x 17 in. and 6.5 in. x 22 in. underground mount
495007	8004037	9.5 in. x 19 in. and 9.5 in. x 28 in. aerial strand mounting hardware
495010	8004038	9.5 in. x 19 in. and 9.5 in. x 28 in. aerial ADSS mounting hardware
495012	8003942	9.5 in. x 19 in. and 9.5 in. x 28 in. pole-/wall-mount hardware

COYOTE GROMMET KITS

Grommet kits contains one grommet, one cable measure tape, two silicone lubricant packs, two set of plugs and one plastic glove. Feature focus video available at [www.Preformed.com](http://www.Preformed.com).

Anixter No.	Vendor No.	Description
349414	8003701	1-entry grommet, 0.42 in. to 0.85 in., 10.7 mm to 21.6 mm
349417	8003691	1-entry grommet, 0.40 in. to 0.60 in., 10.7 mm to 15.2 mm
349419	8003692	1-entry grommet, 0.60 in. to 0.85 in., 15.2 mm to 21.6 mm
395877	8003693	1-entry grommet, 0.85 in. to 1.0 in., 21.6 mm to 25.4 mm
395878	8003694	1-entry grommet, 1.0 in. to 1.25 in., 25.4 mm to 31.6 mm
349420	8003663	2-entry grommet, 0.42 in. to 0.60 in., 10.7 mm to 15.2 mm
349421	8003664	4-entry grommet, 0.30 in. to 0.43 in., 7.6 mm to 10.9 mm
349422	8003665	6-entry grommet, 0.125 in. to 0.25 in., 3.2 mm to 6.4 mm
349423	8003676	7-entry grommet, one 0.42 in. to 0.60 in., 10.7 mm to 15.2 mm; six 0.125 in. to 0.25 in., 3.2 mm to 6.4 mm
349424	8003677	8-entry grommet, 0.125 in. to 0.25 in., 3.2 mm to 6.4 mm
349425	8003780	12-entry grommet, flat drop wire

COYOTE MPC (Multipurpose Closure)

PREFORMED LINE PRODUCTS



FEATURES

- Size: 16 in. L x 14 in. W x 4 in. D (360 mm x 410 mm x 100 mm)
- Eight cable-entrance ports around closure exterior
- Cable-entrance ports sized to accept PLP grommet adapter ports or commercially available fittings
- Easy-to-use grommet system - seven different multi- and single-hole designs to choose from
- Integrated rubber door seal to eliminate water entry
- For indoor and outdoor applications - flame retardant
- Interior grid hole pattern allows custom organization to address your specific application
- Feature focus video available at [www.Preformed.com](http://www.Preformed.com)

COYOTE MPC KITS

Anixter No.	Vendor No.	Description
371459	COYMPC-001	With one 4-hole grommet and organizer clip kit
371460	COYMPC-002	With two OptiTap adapters, one 8-hole grommet, organizer clip kit and storage bracket kit
371461	COYMPC-003	With stepped grommet and organizer clip kit

COYOTE MPC ACCESSORIES

Anixter No.	Vendor No.	Description
371462	8003813	Organizer clip kit - contains three clips
371463	8003811	Storage-bracket kit - contains two brackets
371465	8003814	MPC splice platform kit for single fusion
349405	8003794	Splice plate kit - 72 count LITE-GRIP splice block, ribbon
371467	8003829	Cable-restraint bracket kit - contains one bracket
371469	80808467	Raceway shroud kit - contains one shroud
371471	8003824	8-port internal OptiTap bracket kit
371472	LGSBS8-5	LITE-GRIP splice block kit for single fusion - 5/kit
371473	LGSBR3-5	LITE-GRIP splice block kit for ribbon - 5/kit

# Preformed Line Products OSP

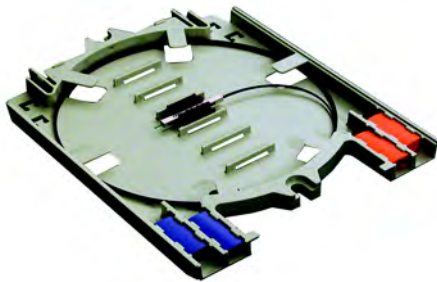
## COYOTE MPC GROMMET PORT ADAPTER KITS

Kits contain one grommet port adapter and hardware, one grommet, silicone lubricant packs and set of plugs.

Anixter No.	Vendor No.	Description
371474	8003825	1-entry grommet, 0.825 in. to 1 in., 21 mm to 25 mm
371475	8003826	1-entry grommet, 0.60 in. to 0.825 in., 15 mm to 21 mm
371476	8003827	1-entry grommet, 0.40 in. to 0.60 in., 10 mm to 15 mm
371477	8003828	2-entry grommet, 0.275 in. to 0.50 in., 7 mm to 12 mm
371478	8003812	4-entry grommet, 0.12 in. to 0.275 in., 3 mm to 7 mm
371479	8003818	8-entry grommet, 0.12 in. to 0.20 in., 3 mm to 5 mm
371480	80808618	Stepped grommet 0.42 in. to 0.60 in., 1.8 mm to 25 mm

## COYOTE PLC Splitter Modules for Passive Fiber Optic Networks

PREFORMED LINE PRODUCTS



COYOTE PLC Splitter Modules utilize PLC chips manufactured with Plasma Chemical Vapor Deposition (P-CVD) technology and its patented fabrication process, for providing stable optical specifications. The PLC modules' silica on silica waveguide and optical fiber array are tested to Telcordia GR-1209 and GR-1221. The splitters feature low insertion loss. Low polarization dependent loss (PDL) and high port uniformity. The high level of performance plus the ability to install the splitter modules in more PLP splice trays make the COYOTE PLP Splitter Modules the ideal choice for your passive component needs.

### FEATURES

- Fast, easy installation
- Splitters are ordered independently of the splice tray so you can configure your tray inventory as needed
- High split counts are now achievable in the smallest closures when used with LITE-GRIP Splice Trays
- Colored bare-fiber leads provide easy identification
- Optical specs developed around your network equipment requirements

Anixter No.	Vendor No.	Description
371486	800012235	1 x 4 split - used with splice trays: 80808524, 80808525, 80806033, 80805514
371487	800012236	1 x 8 split - used with splice trays: 80808524, 80808525, 80806033, 80805514

Anixter No.	Vendor No.	Description
371488	800012237	1 x 16 split - used with splice trays: 80808524, 80808525, 80805514
371489	800012238	1 x 32 split - used with splice trays: 80808524, 80808525, 80805514

## COYOTE RUNT and Expanded RUNT Closures

PREFORMED LINE PRODUCTS



The smallest addition to the COYOTE family of fiber closures, the RUNT is ideal for node applications in low-count fiber distribution networks. The RUNT enclosure will easily fit into most pedestals and handholes. However, the rugged design of the closure allows it to be used in all environments - aerial, buried and underground. The RUNT closure can hold two trays of 12 splices each, allowing it to hold a total of 24 splices.

Anixter No.	Vendor No.	Description
221449	8006671	COYOTE RUNT Closure Kit - includes LOCK-TAPE sealant, bond brackets and transport tubing
215163	80806033	COYOTE 12-count splice tray with elastomeric splice blocks - single fusion or mechanical

## COYOTE PUP Closure

PREFORMED LINE PRODUCTS



The addition of the COYOTE PUP Closure to the COYOTE Closure family of products offers a perfect choice for low-fiber-count distribution applications. The compact size 7.2 in. H x 8.6 in. W x 17.0 in. L (18.4 cm x 21.9 cm x 43.2 cm) and ease of application make the COYOTE PUP Closure the best choice for applications requiring up to 48 fiber splices.

The compatibility also allows your COYOTE PUP Closure to expand or "grow" into a COYOTE Closure in the future with minimal cost or disruption to the existing fibers.

Continued on next page >>

## Outside Plant and Building Entrance

# Preformed Line Products OSP

### (continued) COYOTE PUP Closure

COYOTE PUP CLOSURE KIT 7.2 IN. H X 8.6 IN. W X 17.0 IN. L  
(18.4 CM X 21.9 CM X 43.2 CM)

Anixter No.	Vendor No.	Description
215161	8006622	For buffer tube (loose tube) applications. Includes one three-section, six-port end plate, one blank end plate and storage compartment
215162	8006621	For unitube cable applications. Includes one three-section, 6-port end plate, one blank end plate, transition compartment kit and one transport tube kit

SPLICE TRAYS AND OTHER ACCESSORIES (FOR RUNT OR PUP)

Anixter No.	Vendor No.	Description
215163	80806033	COYOTE 12-count splice tray with elastomeric splice blocks - single fusion or mechanical

### COYOTE Ground Level Closure

#### PREFORMED LINE PRODUCTS



The COYOTE GLC combines the benefits of a below-grade sealed splice closure, handhole and pedestal with the accessibility of an above-ground design. PLP examined the deficiencies in existing above-ground pedestal systems and used its years of OSP design experience to create the GLC. The GLC doesn't force you to work where it's installed and this unique design permits high-volume storage of uncut slack cable. It is the first truly hermetically sealed pedestal system and the only pedestal system with PLP's patented segmented end-plate design. The GLC design also provides the ability to customize the closure to your specific application needs.

#### FEATURES

- Fully sealed and secured system keeps water, insects and animals out
- Transportable to work area
- Re-enterable and reusable
- Multiple fiber-management system options
- Customizable
- Easy-to-use modular design allows for network changes
- Spacer system adapts to changing grade levels
- Built-in isolated ground testing capability
- Durable and cost effective

### COYOTE GLC KITS

All include four grommets and one splice tray

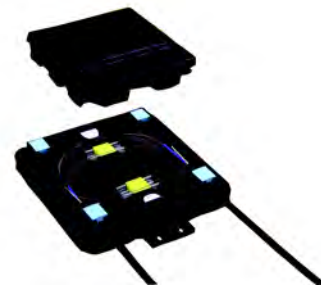
Anixter No.	Vendor No.	Description
442014	COYGLC-F1-000	With universal organizer (buffer or ribbon), no base
442015	COYGLC-F1B-000	With universal organizer (buffer or ribbon) and base
442016	COYGLC-F1B-100	With universal organizer (buffer or ribbon)/grounding spacer/base
442017	COYGLC-F2-000	With buffer tube organizer, no base
442018	COYGLC-F2B-000	With buffer tube organizer and base
442019	COYGLC-F2B-100	With buffer tube organizer/grounding spacer/base
442020	COYGLC-F3-000	With cross-connect organizer (empty), no base
442021	COYGLC-F3B-000	With cross-connect organizer (empty) and base
442022	COYGLC-F3B-100	With cross-connect organizer (empty) / grounding spacer/base COYOTE GLC kits all include four grommets and one splice tray
442023	COYGLC-F4-000	With OptiTap organizer (empty), no base
442024	COYGLC-F4B-000	With OptiTap organizer (empty) and base
442025	COYGLC-F4B-100	With OptiTap organizer (empty)/grounding space/base

### ACCESSORIES

Anixter No.	Vendor No.	Description
442026	COYGLC-C1-000	Base with flat cover
442027	COYGLC-S1-000	Standard spacer kit
442028	COYGLC-S2-000	Grounding spacer kit
442029	COYGLC-S3-000	Double grounding spacer kit
442030	80809788	Retention stake (two suggested to secure base)
442031	80809791	Retention stake driver cap
442032	8003995	Grounding lead kit - includes three grounding leads

### COYOTE DTC (Drop Termination Closure)

#### PREFORMED LINE PRODUCTS



The COYOTE DTC is versatile, compact and quick to install. This closure is constructed to support butt or inline low-count splice applications in a direct-buried or below-grade environment and pole-/wall-mounted applications near the end of your



# Preformed Line Products OSP

network. The closures' compact size and rugged exterior allow for installation in tight spaces without compromising functionality. For corner entrance, ports provide the installer the flexibility to quickly configure the closure as needed. The DTC has the capacity to support up to 16 single fusion splices or multiple ribbon splices.

## FEATURES

- Compact size - 7.25 in. x 7.75 in. x 1.75 in.
- Quick to assemble - no special tools needed
- Re-enterable and reusable with DTC cover removal tool
- Max. splice capacity - 16 single fusions, three fiber ribbons
- Flat shape allows for mounting in small areas
- Designed for direct buried, below grade, pole-/wall-mount or aerial applications
- Can be used in combination with the COYOTE GLC base
- Durable and cost effective

Anixter No.	Vendor No.	Description
442033	COYDTC-001 DTC KIT	Includes closure assembly with four port sealing grommets, two single fusion and one ribbon LITE-GRIP splice block, four cable-retention clips and two fiber organizer clips
442034	80809842	Cover-removal tool

## COYOTE End-plate Grommets

### PREFORMED LINE PRODUCTS

Available for one to four cable entries and a variety of cable diameters; these grommets expand the capacity of the Three-Section End Plate for applications with smaller-diameter fiber drops or insulated ground wires. They are manufactured from a resilient, weather-resistant urethane material that ensures a tight and permanent seal.

For more information contact your local sales office or visit [www.Preformed.com](http://www.Preformed.com) and view the feature focus video or download the COYOTE selection guide. The guide provides additional information on available accessories, various splice trays and silicone grommets.

## COYOTE Closure Accessories

### PREFORMED LINE PRODUCTS

A full line of accessories, including Adjustable Aerial Hanger Brackets, Manhole Brackets, Exterior Bond Braids, Splice Trays and Future Cable Entry Ports allows you to complete the customization of your COYOTE Closure to your job site requirements.

For more information contact your local sales office or visit [www.Preformed.com](http://www.Preformed.com) and download the COYOTE selection guide. The guide provides additional information on available accessories, various splice trays and silicone grommets.

## COYOTE Splice Closure

### PREFORMED LINE PRODUCTS



Years of research and development paid off in the form of a rugged and reliable design that has become legend. The COYOTE Splice closure is available in two sizes and this fiber-management system includes splice trays for mass or single splicing (fusion and mechanical). Feature focus video available at [Preformed.com](http://Preformed.com).

## FEATURES

- Three-section end plate has six cable-entry ports, captive hardware, strength-member tie-off and isolated grounds, and requires no field drilling. A four-cable entry-port version is also available for larger cables
- Durable glass-filled high-density thermoplastic shells available in two diameters, 6.0 in. and 8.5 in.
- Comes with built-in shell stabilizers and air valve
- Field-proven, permanent neoprene gasket sealing system eliminates the need for re-entry kits. No flame is required to break the seal or to install
- LOCK-TAPE Sealant System ensures a tightly, permanently sealed end-plate assembly and maximum sheer strength to resist cable pullout

## CLOSURE KIT

Each kit contains one three-section, six-port end plate, one blank end plate and storage-compartment kit.

Anixter No.	Vendor No.	Description
175767	8006560	6 in. x 22 in. closure, capacity 4-36 tray, 144 fiber
175764	8006561	8.5 in. x 22 in. closure, capacity 8-36 tray, 288 fiber

## SPLICE TRAYS

Anixter No.	Vendor No.	Description
179456	80805110	Single fiber, fusion splice - 36
204796	80805514	COYOTE Blank Splice Tray Kit with three elastomeric, 12-count splice blocks

## INSTALLATION MATERIALS

Anixter No.	Vendor No.	Description
183136	80802377	C-Cement, 4 oz. can
199794	80801953	LOCK-TAPE sealant, (DR tape), 1 1/2 in. x 12 ft.
395848	80805925	LOCK-TAPE sealant, (DR tape), 1 in. x 15 ft.

## Outside Plant and Building Entrance

# 3M OSP

### SLiC Aerial Closures with Spiral End Seal

3M

The 3M SLiC Closure Kit is a complete system which includes a one-piece hinged body, spiral end seals, bonding, 3M Scotchlok Shield Bond Connectors 4462 and installation instructions. Splice connectors are ordered separately.

These closures are free-breathing and suitable for straight-through, butt and branch splicing on non-pressurized communications cables. Interlocking body ends facilitate extending closure length without separate kits and spiral end seals provide for multiple cable entrances.



#### FEATURES

- SLiC closure can accommodate up to (9.6 in. x 36 in.) for maximum 3,600 pair, 26 AWG
- 2.6x29, 3.6x33, 5.6x33 and 7.6x33 closures can be extended
- Additional cables measuring 0.2 in. to 0.4 in. diameter can be installed between layers of the spiral end seal material

Anixter No.	Vendor No.	Shield Bond Connectors Included	End Seals Included	Sheath Retention	Max. Splice Bundle Diameter (in.)	Max. Splice Opening (in.)	Extendable
326239	SLIC-2.2X19-BA/SES	Yes	(2) double port	No	2.2	14	No
171530	SLIC-2.6X29-BA/SES	Yes	(2) double port	No	2.6	17	Yes
196157	SLIC-9.6X36-BA/SES	Yes	(2) five port	No	9.6	25	No
443544	SLIC-3.6X19-BA/SES	Yes	(2) triple port	No	3.6	14	Yes
171531	SLIC3.6X33-BA/SES	Yes	(2) triple port	No	3.6	21	Yes
171532	SLIC5.6X33-BA/SES	Yes	(2) four port	No	5.6	21	Yes
440492	SLIC7.6X33BASES	Yes	(2) five port	No	7.6	21	Yes
443545	SLIC-3.6X19-SES	No	(3) single port	No	3.6	14	No
443547	SLIC-2.2X19-SES	No	(2) single port	No	2.2	14	No
495189	SLIC-2.6X29-SES	No	(2) double port	No	2.6	17	Yes
443548	SLIC-3.6X33-SES	No	(3) single port	No	3.6	21	Yes
443549	SLIC-5.6X33-SES	No	(4) single port	No	5.6	21	Yes
443550	SLIC-7.6X33-SES	No	(5) single port	No	7.6	21	Yes
443551	SLIC-9.6X36-SES	No	(5) single port	No	9.6	25	No
495190	SLIC-2.2X19-SR/SES	No	(2) double port	Yes	2.2	14	No
495191	SLIC-2.6X29-SR/SES	No	(2) double port	Yes	2.6	17	Yes
495192	SLIC-3.6X33-SR/SES	No	(2) triple port	Yes	3.6	21	Yes
443552	SLIC-5.6X33-SR/SES	No	(2) four port	Yes	5.6	21	Yes
443553	SLIC-7.6X33-SR/SES	No	(2) five port	Yes	7.6	21	Yes
443554	SLIC-9.6X36-SR/SES	No	(2) five port	Yes	9.6	25	No

### Fiber Optic Splice Closures 2178

3M



The 3M Fiber Optic Splice Closures 2178 are hermetically sealed fiber splice closures for aerial strand-mount, pole-mount, wall-mount, pedestal-mount, underground and indoor applications. The 2178s provide secure protection for anyone deploying fiber optic networks: long-haul, metro, local access (DSL, HFC, wireless backhaul) and FTTP

networks. They are designed for butt-, inline- or branch-splicing configurations of armored or dielectric, single or ribbon fiber cables.

#### FEATURES

- Available in seven models (UL Listed fire/flame-retardant and non-fire/flame-retardant versions) for any splicing configuration, environment or application
- Constructed of highly chemical-resistant material which makes them ideal for any OSP environment: manhole, handhole, aerial, ped and direct buried
- Future-proof; the scalable/flexible design with interchangeable parts permits expansion of cable entry ports and splice capacity to meet current and future network needs without splice rebuilding. Allows for the deferment of investment until it is required
- Versatile and flexible; accommodate small or large, single/ribbon, armored/dielectric fiber cables and various splicing configurations (butt, inline, and branch) for any environmental application (aerial pole/strand, handhole, ped, manhole, direct-buried, MDU or CO/HE vault)

- Easy to install and requires no special tools or complicated training procedures. Fire/flammable-retardant and OSP closures have the exact same installation procedures. Reusable gasket seal allows easy re-entry with no additional material costs or special tools
- Designed and tested to Telcordia's GR-771-CORE Issue 1, July 1994, Generic Requirements for Fiber Optic Splice Closures (Verizon VZ.TPR.9412)

**INDOOR SPLICE CASE**

Fire retardant for vault and building applications.

Anixter No.	Vendor No.	Splice Configuration	Max. No. of Ports
203826	2178-S/FR	Inline, butt	2, 4, 6, 8, 12, 16
203827	2178-LS/FR	Inline, butt	2, 4, 6, 8, 12, 16
203828	2178-LL/FR	Inline, butt	2, 4, 6, 8, 12, 16
443535	2178-XSB/FR/OG-OT	Butt	2, 3

**OUTDOOR SPLICE CASE**

No encapsulant required. Applications include aerial strand-mount, pole-mount, pedestal, underground and wall-mount.

Anixter No.	Vendor No.	Splice Configuration	Max. No. of Ports
197951	2178-LS	Inline, butt	2, 4, 6, 8, 12, 16
481664	2178-S/4LUG	Inline, butt	2, 4, 6, 8, 12, 16
244146	2178-S	Inline, butt	2, 4, 6, 8, 12, 16
348782	2178-LL	Inline, butt	2, 4, 6, 8, 12, 16
495205	2178-LL/4LUG	Inline, butt	2, 4, 6, 8, 12, 16
244052	2178-XL	Inline, butt	4, 8
443542	2178-XSB-EG-OT	Butt	2, 3
443543	2178-XSB	Butt	2, 3
348924	2178-XSB-EG-1T	Butt	2, 3
495199	2178-XSB-EG-2T	Butt	2, 3

**Splice Trays for 2178 Closure**

3M



Various splice trays are available for the 2178 Splice Closures. The trays are available with stacked or hinged, single fusion splicing or mass fusion splicing storage, fixed or positionable splice inserts features.

Anixter No.	Vendor No.	Description
137587	2524	Accommodates 24 3M Fibrlok splices and accommodates up to eight buffer tubes
443280	2539-12-SF	Accommodate 12 single fusion splices (2.4 mm x 60 mm), hinged
443281	2540-12-SF/36-MF	Accommodate 12 single fusion splices (2.4 mm x 60 mm) or 36 mass fusion splices, hinged

Anixter No.	Vendor No.	Description
443282	2543-S-144-MF	Accommodates up to 144 mass fusion splices and has entry from all corners for standard transition or LBT tubes
443287	2543-T-144-MF	Accommodates 144 mass fusion splices. Fibers are routed into the trays using 2520-6RF tubing that zips over the fibers. The tray has entry from all corners
443289	2543-U-24SF-3MM/144MF	Accommodates 24 single fusion (3 mm x 60 mm) or 144 mass fusion splices. Fibers are routed into the trays using 2520-6RF tubing that zips over the fibers on one end of the tray
147657	2524-FT	Accommodates up to eight buffer tubes holding up to 24 single fusion splices (3 mm x 60 mm)
443291	2523-48-SF	Stores and protects 48 single fusion splices (3 mm x 60 mm). The 2521-F splice inserts which are included are easily added to secure splices into the trays. Fibers are routed into the trays using 2520 tubing that zips over the fibers
443293	2522-24-SF	Stores and protects 24 single fusion splices (3.0 mm x 60 mm). The 2521-F splice inserts which are included are easily added to secure splices into the trays. Fibers are routed into the trays using 2520 tubing that zips over the fibers. The tray has entry from all corners and hinges from side to side.

**2521 SPLICE INSERTS**

These separate parts are used to easily secure splices into the trays. The fibers are routed into the trays using 2520 tubing that zips over the fibers. The tray has entry from all corners and hinges from side to side.

Anixter No.	Vendor No.	Description
351719	2523	Stores and protects 24 Fibrlok splices, 144 mass fusion or 48 single fusion splices (3 mm x 60 mm)
186270	2522	Stores and protects 12 Fibrlok splices, 120 mass fusion or 24 single fusion splices (3 mm x 60 mm)

Continued on next page >>

## Outside Plant and Building Entrance

# 3M OSP

*(continued)* Splice Trays for 2178 Closure

SINGLE FUSION SPLICE INSERTS FOR FIBER OPTIC SPLICE SLEEVE 2170 (3 MM X 60 MM HEAT SHRINK SLEEVE)

The tray has entry from all corners.

Anixter No.	Vendor No.	Description
351718	2532	For up to 24 single fusion or 72 mass fusion splices
331300	2527	For up to 24 single fusion or 144 mass fusion splices
443275	2527-48-SF	For up to 48 single fusion splices
443284	2543-S-24-SF-2.4MM	For up to 24 single fusion splices
443285	2543-S-24-SF-3.0MM	For up to 24 single fusion splices

### KITS AND ACCESSORIES

Anixter No.	Vendor No.	Description
361657	2559	Fibrlok Splice Kit without fiber cleaver
443618	2559-C	Fibrlok Splice Kit with fiber cleaver. Includes all tools necessary to install Fibrlok flat splices
443622	2565	3M Fiber Optic Angle Cleave Kit 2565 includes the 3M fiber optic angle cleaver 2535 and all tools necessary for 8800-APC/AS and 8830-APC/AS
112256	2501	Assembly tool required for Fibrlok 2529-AS and 2540-AS. Included in 2565 kit
443627	2501-AS	Angle-splice assembly tool required for Fibrlok 2529-AS and 2540-AS. Included in 2565 kit

### Fibrlok Optical Splices, Kits and Accessories

3M



The 3M Fibrlok Single Fiber Optical Splicing System 2500 Series is designed to easily splice any combination of 250- or 900-micron coated fibers with inexpensive tooling and no electrical power. Splice tray not included.

Anixter No.	Vendor No.	Description
153852	2529	Cleave type: flat, universal fiber optical fiber splice for 250 and 900 $\mu\text{m}$
443604	2529-AS	Cleave type: angle, actuation tool is 2501
443608	2529-K	Cleave type: flat, separate actuation tool
490675	2539	Cleave type: splice/holder, integrated actuation tool and holder with tape
490681	2539-SC/APC	Cleave type: flat, integrated actuation tool
490685	2539-SC/UPC	Cleave type: flat, integrated actuation tool
490687	2540-AS	Cleave type: Fibrlok 250 $\mu\text{m}$ , angle fiber splice
490688	2529-AS/B	Cleave type: Fibrlok II, bulk, angle fiber splice
490689	2529-B	Cleave type: Fibrlok II, bulk, universal optical fiber splice

**Better Buried Closures**

3M

The Better Buried Closures Series uses the compound compression method to force the encapsulant up the cable to stop water ingress, which provides splice protection even in the most severe OSP buried environments. Better Buried closures are offered in different sizes to cover various cable ranges and can be easily extended and bricked. 3M MS<sup>2</sup> Splicing Modules 4000-DWP splicing modules with sealant boxes and 3M Scotchlok UR2 and UY2 discrete connectors are recommended for use in the Better Buried Closures.



**FEATURES**

- Sleeve set (top and bottom) and spacer web
- Single (SC) or two single-hole end caps (2SC), double (DC) or two double-hole end caps (2DC), or triple-hole end caps (TC)
- Fill port caps and funnel
- Large and small S.S. hose clamps
- Strain-relief bond bars/insulating sleeves
- Sealing strips and installation practice
- 8882 High Gel Re-enterable Encapsulant
- Scotchlok Shield Bond Connectors 4460 (SB)
- Bonding braid
- Locking harness system (LHS)

**BETTER BURIED COMPLETE KITS**

Includes 3M Scotchlok Shield Bond Connectors 4460-D or 4462-FN, 3M Better Buried Sleeve Kits, 3M High Gel Re-Enterable Encapsulant 8882, hose clamps, Scotch All Weather Telephone Vinyl Plastic Tape 88T, 3M Scotchcast Spacer Web 4430 (for re-entry only), DR tape, sheath scuff material, Scotch Linerless Rubber Splicing Tape 130C, 3M Scotchcast Pair Saver 4458 or 4458W, Scotch Rubber Splicing Tape 23, 3M Scotchcast Strain Relief Bar Kits 4465 or 4465-L, B Sealing Tape, bonding braid, 3M Better Buried End Caps, funnel, closure body. These kits are complete and include all necessary materials for buried installation except for splice connectors which must be ordered separately.

Anixter No.	Vendor No.	Closure Size (in.)	Max. Capacity 4,000 DWP Pr./AWG	Max. Capacity UR2 Pr./AWG	Approx. Qty. Compound (g)
277272	BB2X12-8882/HIGHGEL	2x12	50/24	25/22	600
277273	BB2X24-8882/HIGHGEL	2x24	100/24	50/22	1,200
277274	BB3X24-8882/HIGHGEL	3x24	200/24	100/22	3,000
277275	BB4X24-8882/HIGHGEL	4x24	400/24	200/22	4,500
276646	BB5X26-8882/HIGHGEL	5x26	600/24	300/22	7,200

**BETTER BURIED CLOSURE PARTIAL KITS FOR GRAVITY POUR**

It is suggested to use 3M Scotchlok connectors and 3M MS<sup>2</sup>/ 3M 710 modules along with the Better Buried closures. End user will need to determine if these connectors and modules are suitable for their intended application. It is required to use DR tape 68631 and B Sealing Tapes. These are not included in the partial kits. Kit contents: 3M Better Buried Sleeves, hose clamps, 3M Scotchcast Spacer Web 4430 (for re-entry only), 3M Scotchcast Strain Relief Bar Kits 4465 or 4465-L, 3M Better Buried End Caps, funnel, closure body, sheath scuff material, bonding braid, 3M Scotchcast Pair Saver 4458 or 4458W and 3M Scotchlok Shield Bond Connectors 4460-D.

Anixter No.	Vendor No.	Closure Size (in.)	Max. Capacity 4,000 DWP Pr./AWG	Max. Capacity UR2 Pr./AWG	Approx. Qty. Compound (g)
043566	BB2X12-SB/2SC-LHS	2x12	50/24	25/22	600
032236	BB2X24SB/2SCLHS	2x24	100/24	50/22	1,200
023451	BB2X24-SB/SC/DC-LHS	2x24	100/24	50/22	1,200
032237	BB3X24-SB/2SC-LHS	3x24	200/24	100/22	3,000
031486	BB3X24SB/SC/DC-LHS	3x24	200/24	100/22	3,000
031487	BB4X24-SB/SC/DC-LHS	4x24	400/24	200/22	4,500
032238	BB4X24SB/2SCLHS	4x24	400/24	200/22	4,500
062923	BB5X26SB/2SCLHS	5x26	600/24	300/22	7,200
077936	BB6X26-SB/2DC-LHS	6x26	900/24	400/22	12,500
060470	BB7X26-SB/2DC-LHS	7x26	1,200/24	600/22	15,000
050212	BB7X26SBDCTCLHS	7x26	1,200/24	600/22	15,000
443566	BB9X26-SB/2DC-LHS	9x26	2,400/24	900/22	21,000
035088	BB9X26-SB/DC/TC-LHS	9x26	2,400/24	900/22	21,000

1. Refer to Approx. Qty. Compound column to determine quantity of encapsulant when ordering the Better Buried Closure. (Encapsulant included with Better Buried Closure kit.)
2. B Sealing Tape and Scotch Linerless Rubber Tape are required to seal the cable to the end cap. Wrap the B Sealing Tape on the cable jacket and then wrap the Linerless Rubber Tape on top of the B Sealing Tape.
3. Filled Cable Cleaning Kit is essential to remove cable filling compound prior to splicing.
4. See Closure Accessories for non-kit accessories.

## Outside Plant and Building Entrance

# 3M OSP

### Better Buried Closure Accessories

The following list of closure accessories contains products that may be required to complete the closure system.

#### PREPARATION - INDOOR AND OUTDOOR SPLICES

Anixter No.	Vendor No.	Vendor	Description
156549	2183	3M Telcom	E-Z Wrap is a tough, thin elastic vinyl material which sticks to itself when wrapped in layers. It forms a compact, durable, flexible, moisture-proof covering

443296	4430-6X20	3M Telcom	Spacer web 6 x 20
--------	-----------	-----------	-------------------

#### BONDING AND GROUNDING - INDOOR AND OUTDOOR SPLICES

Anixter No.	Vendor No.	Vendor	Description
020936	C-4043	Comtech	Bullet Bond 1000 Clip (over 11 pair) with heat shield
021158	C-4040	Comtech	Bullet Bond 1000 Clip (over 11 pair) without heat shield
092972	EM20B2	Corning	Bulldog bond clamp
443297	2-DS-24-BB	3M Telcom	2 in. x 24 in. better buried closure split sleeve
443298	3-DS-24-BB	3M Telcom	3 in. x 24 in. better buried closure split sleeve
443299	4-DS-24-BB	3M Telcom	4 in. x 24 in. better buried closure split sleeve
443300	5-DS-26-BB	3M Telcom	5 in. x 26 in. better buried closure split sleeve
062948	800081002	Preformed	No.6 bonding braid (100 ft. coil)
117775	80801303	Preformed	Bonding ferrule F/bonding to shield connectors
037408	400-366-332	AK Stamp	B1 bond clamp (less than 0.8 in. diameter cable)
152724	400-366-340	AK Stamp	B2 bond clamp (for 0.8 in. to 1.6 in. diameter cable)
052364	AT8544 SIZE3	AK Stamp	B3 bond clamp (over 1.6 in. diameter cable)

#### ENCAPSULANTS - OUTDOOR SPLICES

Anixter No.	Vendor No.	Vendor	Description
277292	8882-C	3M Telcom	High gel re-enterable encapsulant, 385 ml
277288	8882-750/F	3M Telcom	High gel re-enterable encapsulant, 824 ml
277282	8882-1500/F	3M Telcom	High gel re-enterable encapsulant, 1,648 ml
277284	8882-3000/F	3M Telcom	High gel re-enterable encapsulant, 3,296 ml
277283	8882-1900C	3M Telcom	High gel re-enterable encapsulant, 1,979 ml
443302	8882-3000C	3M Telcom	High gel re-enterable encapsulant, 3,123 ml
443304	8882-4500C	3M Telcom	High gel re-enterable encapsulant, 4,683 ml
277285	8882-5000C	3M Telcom	High gel re-enterable encapsulant, 5,208 ml
277287	8882-6000	3M Telcom	High gel re-enterable encapsulant, 6,593 ml
277290	8882-8000C	3M Telcom	High gel re-enterable encapsulant, 8,333 ml
277291	8882-A	3M Telcom	High gel re-enterable encapsulant, 90 ml
277294	8882-E	3M Telcom	High gel re-enterable encapsulant, 292 ml
277286	8882-500C	3M Telcom	High gel re-enterable encapsulant, 521 ml
277293	8882-D	3M Telcom	High gel re-enterable encapsulant, 659 ml
277289	8882-750C	3M Telcom	High gel re-enterable encapsulant, 781 ml
160060	72551	Caschem	165 System re-enterable encapsulant (5,000 grams)
160061	72581	Caschem	165 System re-enterable encapsulant (8,000 grams)

#### TAPES

Anixter No.	Vendor No.	Vendor	Description
178261	130C-3/4X30FT	3M Telcom	Scotch linerless rubber tape (3/4 in. x 30 ft.), place over B tape
178013	130C-2X30	3M Telcom	Scotch linerless rubber tape (2 in. x 30 ft.), place over B tape
009637	VM 1.5X20	3M Telcom	Scotch vinyl mastic tape (1 1/2 in. x 20 ft.)
009651	VM 4X10	3M Telcom	Scotch vinyl mastic tape (4 in. x 10 ft.)
023772	VM-22X10	3M Telcom	Scotch vinyl mastic tape (22 in. x 10 ft.)
443313	130-1X10FT	3M Telcom	Scotch linerless rubber splicing tape

KB Building Vault and Riser Closures

3M

Designed for use in building riser closets and other indoor splicing applications where flooding does not occur. Closures may be positioned horizontally or vertically. End caps and closures are flame retardant. Features multiple entry closures (straight inline or butt-splice applications).

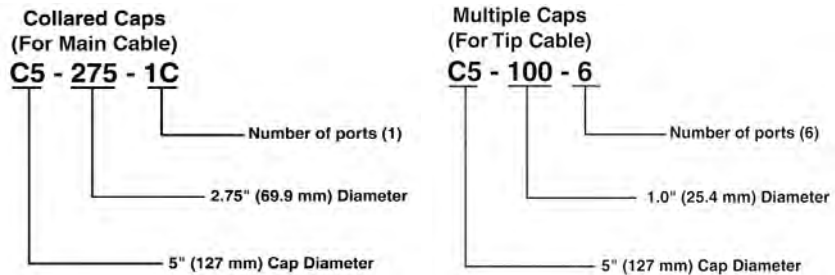


Anixter No.	Vendor No.	Approx. Splice Bundle Capacity	Approx. Splice Bundle Scotchlok	Max. Allow. Cable Dia.			Description	Diameter	Length
				Port 1	Port 2	Port 3			
055632	R-3	300-pair 24 AWG	150/24	1.2 (30)	1.2 (30)	----	Double cap/double cap	3 in.	24 in.
071423	R-5	900-pair 24 AWG	400/24	2.0 (51)	2.0 (51)	----	Double cap/double cap	5 in.	26 in.
086741	R-7	1,800-pair 24 AWG	900/24	3.1 (79)	2.4 (61)	2.0 (51)	Triple cap/triple cap	7 in.	26 in.
088445	R-9	3,000-pair 24 AWG	1,800/24	3.8 (96)	3.1 (79)	2.4 (61)	Triple cap/triple cap	9 in.	26 in.

Selection Chart for KB Vault Closures

3M

Using the chart, determine the appropriate sleeve diameter to accommodate the splice, based on the pair count and type of connector used. For example, a 600-pair cable spliced with 3M MS<sup>2</sup> Modules or a 300-pair cable spliced with 3M Scotchlok Connectors would require a 5 in. diameter sleeve (refer to the first three columns). KBS5 of kit part number KBS5-130-6 under Column 6 denotes a 5 in. diameter split sleeve. The 130-6 indicates a 1.30 in. diameter for each of the six outgoing tip cable ports. Select a closure kit with a split sleeve KBS5 for new construction or existing splices. Solid sleeve closure kits are also available upon request.



Choose the correct collared and multiple end caps to meet your cable diameter and configuration. (Refer to end cap configurations in the chart.)

Determine if a standard closure will work by comparing the number of tip cables and their diameters with the ports in the standard multiple end caps. (e.g. C8-130-18) The collared cap ports can be up to 1/4 in. larger than the nominal cable diameter. Use bushings for further reduction. Plug any unused holes by selecting tapered plugs.

FOR EXISTING SPLICE

Anixter No.	Kit No.	Pair Count MS <sup>2</sup>	Pair Count Scotchlok	Sleeve Dia. in. (mm)	Multiple End Cap No.	Single End Cap (Collared) No.
171593	KBS3-175-1	200	100	3 (76)	----	C3-175-1C (two)
068841	KBS5-100-6	600	300	5 (127)	C5-100-6	C5-275-1C
073505	KBS5-130-6	----	----	----	C5-130-6	C5-275-1C
071773	KBS6-100-9	900	400	6 (152)	C6-100-9	C6-275-1C
068842	KBS7-100-15	1,200	600	7 (178)	C7-100-15	C7-275-1C
035805	KBS8-100-24	2,400	800	8 (203)	C8-100-24	C8-300-1C

FOR NEW CONSTRUCTION

Anixter No.	Kit No.	Pair Count MS <sup>2</sup>	Pair Count Scotchlok	Sleeve Dia. in. (mm)	Multiple End Cap No.	Single End Cap (Collared) No.
099415	KB2-100-2	100	50	2 (51)	----	C2-2 (two)
077500	KB4-175-2	----	----	----	C4-175-2	C4-175-1C

Other splice case configurations are available. Please contact your sales representative.

## Outside Plant and Building Entrance

# 3M OSP

### Scotchcast High Gel Series Re-enterable Closures 89 Series

3M

3M Scotchcast Closures 8980 Series uses a gravity fill method of encapsulating and protecting copper cables in either an underground or direct-buried environment. Six rigid body-closure sizes are offered to meet various cable diameters and splicing capacities for the outside-plant environment. Kits are packed with 3M High Gel Re-enterable Encapsulant 8882 for easy re-entry.

For the 8981 and 8982 closures, 3M Scotchlok Connectors are required accessories.

For the 8983, 8984, 8985 and 8986 closures, 3M Scotchlok Connectors or 3M MS<sup>2</sup> Modules are required accessories.



Anixter No.	Vendor No.	Max. Splice Bundle Diameter (in.)	Closure Length End to End (in.)	Approx. Compound Included Mass (grams)	Max. Splice Opening (in.)	Approx. Compound Included Volume (ml)	Shield Bond Connector Type
277276	8981-8882/HIGHGEL	0.5	7.2	82	1.5	90	4460-D
277277	8982-8882/HIGHGEL	0.9	10.75	266	5.25	300	4460-D
277278	8983-8882/HIGHGEL	1.25	15.6	600	9.75	660	4460-D
277279	8984-8882/HIGHGEL	2.25	15.75	1,200	9	1,320	4460-D
277280	8985-8882/HIGHGEL	3.5	24.5	3,000	17	3,300	4462-FN
277281	8986-8882/HIGHGEL	4.75	24.5	6,000	17	6,600	4462-FN
034956	8981-07	0.5	7.2	82	1.5	90	4460-D
034957	8982-07	0.9	10.75	266	5.25	300	4460-D
034958	8983-07	1.25	15.6	600	9.75	660	4460-D
034959	8984-07	2.25	15.75	1,200	9	1,320	4460-D
408402	8985-07	3.5	24.5	3,000	17	3,300	4462-FN
443556	8986-07	4.75	24.5	6,000	17	6,600	4462-FN

### High Gel Re-enterable Encapsulant 8882

3M

3M High Gel Re-enterable Encapsulant 8882 is a two-part non-urethane encapsulating compound. The encapsulant aggressively adheres to filled cable and is compatible with common plastics used in telephone splice connectors. The encapsulant permits easy cable splice re-entry for future changes and maintenance. The 8882 encapsulant is one of a system of products available from 3M.

Anixter No.	Vendor No.	Description	Anixter No.	Vendor No.	Description
277292	8882-C	High gel re-enterable encapsulant, 385 ml	277294	8882-E	High gel re-enterable encapsulant, 292 ml
277288	8882-750/F	High gel re-enterable encapsulant, 824 ml	277286	8882-500C	High gel re-enterable encapsulant, 521 ml
277282	8882-1500/F	High gel re-enterable encapsulant, 1,648 ml	277293	8882-D	High gel re-enterable encapsulant, 659 ml
277284	8882-3000/F	High gel re-enterable encapsulant, 3,296 ml	277289	8882-750C	High gel re-enterable encapsulant, 781 ml
277283	8882-1900C	High gel re-enterable encapsulant, 1,979 ml			
443302	8882-3000C	High gel re-enterable encapsulant, 3,123 ml			
443304	8882-4500C	High gel re-enterable encapsulant, 4,683 ml			
277285	8882-5000C	High gel re-enterable encapsulant, 5,208 ml			
277287	8882-6000	High gel re-enterable encapsulant, 6,593 ml			
277290	8882-8000C	High gel re-enterable encapsulant, 8,333 ml			
277291	8882-A	High gel re-enterable encapsulant, 90 ml			

### Scotchcast Encapsulating and Blocking Compound 4407

3M

Developed for splice encapsulation and pressure blocking, Scotchcast 4407 compound is a two-part compound. It features excellent wetting properties and low viscosity, which means it flows quickly and freely. Its low-temperature cure properties mean that it may be used in almost any type of weather. Cure time is fast: approximately one hour at 22°C (72°F) and 20 hours at -4°C (20°F). 4407 is usable to -18°C (0°F). Designed for both splice encapsulation and cable blocking.

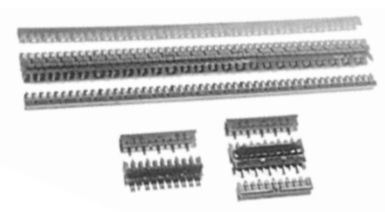
Anixter No.	Vendor No.	Description
443321	4407-A	89 ml
024550	4407-B	197 ml
023053	4407-C	396 ml
029727	4407-D	636 ml
249116	4407-E	283 ml
249117	4407-1500/F	1,415 ml



710 Connectors

3M

The 710 Connector is a 25-pair splice connector used for splicing gel-filled, large-pair-count, copper cables. It is gel-filled or dry and used in splice closures. It is capable of splicing 22- through 26-gauge copper or aluminum cable.



Anixter No.	Vendor No.	Connector Type	AWG Wires	Cable Type	Composition	No. of Pairs
237387	3M710-SD1-5	Straight/half tap	22 - 26	PIC, pulp, paper	Dry	5
237382	3M710-BC1-25	Bridge	22 - 26	PIC	Filled	25
237383	3M710-BD1-25	Bridge	22 - 26	PIC, pulp, paper	Dry	25
237385	3M710-SCL-25	Straight	22 - 24	PIC	Filled	25
495208	3M710-SDL-25	Straight/half tap	22 - 24	PIC, pulp, paper	Dry	25
237386	3M710-SD1-25	Straight/half tap	24 - 26	PIC, pulp, paper	Dry	25
237388	3M710-TC1-25	Straight/half tap	24 - 26	PIC	Filled	25
237389	3M710-TCL-25	Straight/half tap	22 - 24	PIC	Filled	25
242509	3M710-SC1-25	Straight	24 - 26	PIC	Filled	25
443537	3M710-BC1-5	Bridge	22 - 26	PIC	Filled	5
495209	3M710-BD1-5	Bridge	22 - 26	PIC, pulp, paper	Dry	5
443538	3M710-SC1-5	Straight	22 - 26	PIC	Filled	5

710 TOOLS AND ACCESSORIES

Anixter No.	Vendor No.	Description
254596	3M710-HTK05A	5-pair hand presser kit with 5- and 25-pair connector holders, with case
233257	3M710-UTK25A	25-pair splicing rig
233259	3M710-UT25A	Tool only
245833	3M710-TMK10-A	A multipiece set designed to mount and support all splicing tools on splicer boxes, pedestals or racking
245834	3M710-TPK10	710 connector tripod kit
443485	3M710-AP105-05	5-pair hand presser blades
443486	3M710-UMK25A	25-pair splicing rig kit: Includes everything in the UTK25A kit, plus a 3M wire cut-off tool 710-CCT10, plus 3M single-pair test leads. Includes: 25-pair bridge support, 25 pair splice support, one 25-pair spare blade, error tester, lubricant, allen wrench, cleaning brush, hardware kit, plastic case and blade replacement instruction sheet
490700	3M710-BRT10A	Bridge removal tool
490702	3M710-AP105-25-S	25-pair steel blade fits into 3M710-AP105-25-SH metal blade holder
490703	3M710-AP105-25-SH	25-pair steel blade holder tool
443487	3M710-AP106-25	25-pair bridge module support
443488	3M710-TMK10-A1	Base
443490	3M710-TMK10-A2	Tool clamp
490704	3M710-TMK10-A3	Swivel bar
490705	3M710-TMK10-A4	Tube clamp
490707	3M710-TMK10-A5	Vise clamp
490708	3M710-TMK10-A6	Swivel knob
490709	3M710-TMK10-A7	Tube/clamp
490713	3M710-TMK10-A8	90 degree mount
443491	3M710-HT05A	Includes 5- and 25-pair connector holder assemblies, 25-pair bridge module and splice supports, 5-pair bridge and splice supports and the 5-pair petite holder
443493	3M710-BSP	A hand tool used to press 3M 710 bridge modules and 3M splices or half-tap modules together, and to press caps onto 3M 710 modules
443494	3M710-CRT10	For removal of caps from connector modules to rearrange pairs or perform maintenance wire work
490718	3M710-HMK05A	5-pair hand presser tool maintenance kit with 945A spare parts
407037	3M710-CCT10	For cutting off through-conductor wires that will not be used after half-tapping

## Outside Plant and Building Entrance

# 3M OSP

### MS<sup>2</sup> Splicing Modules

3M

The MS<sup>2</sup> Super-Mini and Super Mate Splicing Modules provide the reliability of soldered connections, plus the efficiency of 25-pair splicing with a wire range of 22 to 28 AWG. The 4000 series Super-Mini and 4005 series Super Mate Modules are the basic components of MS<sup>2</sup> Modular System Splicing from 3M.

The MS<sup>2</sup> 4000 and 4008 series Super-Mini Modules are available for straight and half-tap splicing applications. The 4000 series modules provide for two-wire straight splicing. Like all MS modules, the 4000 series modules are designed so that wire gauges and insulation types may be mixed in the module.

The 4008 series Super-Mini Modules are similar to the 4000 series, except that the cut-off blades have been eliminated from the bottom of the modules. This allows the run or through wires to be half-tapped without cutting the conductors. The wires in the base are electrically connected, but are not cut off. Both 4000 and 4008 series modules are available dry or encapsulated with use determined by application requirement. The 4005-DPM series Super Mate Modules mate with other Super Mate Modules, allowing multiple counts as necessary. The 4005-DPM series also mate with the 4000-D Super-Mini Module series for bridging applications.



#### 4000 SPLICING MODULES

Anixter No.	Vendor No.	Composition	Cover Color	Body Top Color	Body Bottom Color	Base Color
131593	4000D/CO	Dry	Gray	Gray	Gray	Gray
495210	4000-D/TR/24	Dry	Transparent	Yellow	Dark gold	Transparent smoked gray
131610	4000-G/TR	Filled	Transparent	Yellow	Dark gold	Transparent smoked gray
113288	4005-DPM/FR	Dry	Gray	Gray	Dark blue	Maroon
131590	4000-DWP/TR	Dry	Transparent	Yellow	Dark gold	Transparent smoked gray
171617	4005-DPM/TR	Dry	Transparent	Yellow	Blue	Red
443512	4005-DBM/TR/NB	Dry	Transparent	Yellow	Blue	Red
163973	4008-D/TR	Dry	Transparent	Yellow	Green	Transparent smoked gray
171622	4008-G/TR	Filled	Transparent	Yellow	Green	Transparent smoked gray
495211	4005-GBM/TR/NB	Filled	Transparent	Blue	Blue	Red
443515	4008-D/CO	Dry	Gray	Gray	Gray	Gray
443516	4000-DT/TR	Dry	Transparent	Green	Blue	Red
171621	4005-GBM/TR	Filled	Transparent	Blue	Blue	Red

#### SEALANT BOXES

Sealant boxes for moisture protection for the 4000 modules

Anixter No.	Vendor No.	Description
131581	4075-S	Sealant-filled box to provide moisture protection for the 4000-D/TR, 4008-D/TR or 4000 DT/TR
131579	4077-A	Sealant-filled box to provide moisture protection for one 4005 DPM/TR module
131578	4077-B	Sealant-filled box to provide moisture protection for one 4000 D/TR and one 4005 DPM/TR modules
131575	4077-C	Sealant-filled box to provide moisture protection for two 4005 DPM/TR modules
183867	4077-D	Sealant-filled box to provide moisture protection for three 4005 DPM/TR modules

**MS<sup>2</sup> Quick-connect Distribution Termination Kit 4011-E/300**

3M

The MS<sup>2</sup> Distribution Termination Kit is identical to the 4010-E/300 kit, except that the 4011-E/300 kit contains (12) 4011-E Encapsulated Distribution Modules (blue), instead of feeder modules.

Anixter No.	Vendor No.	Description
024610	4011E/300	Kit

**MS<sup>2</sup> Lite Rig 4049**

3M



The 4049 Lite Rig is a complete economical splicing rig ideal for lower-pair-count splicing. Provides splicer with place to sit, is compact for easy truck storage and weighs only 25 pounds. The 3M MS<sup>2</sup> hand hydraulic crimper 4036 is self-contained, making quick work of MS<sup>2</sup> splicing, utilizing all 4000 series modules. Comfortable work belt and manual are included.

Anixter No.	Vendor No.	Description
171625	4049-R	Lite rig

**MS<sup>2</sup> Pair Test Plug 4047**

3M



The 3M MS<sup>2</sup> Pair Test Plug 4047 is a connector probe which permits pair checking without damaging wire insulation. The prongs fit the test entry port of all MS<sup>2</sup> modules. The cord permits easy connection to a talk block or test set. The adjustable clamp allows for attachment to any MS<sup>2</sup> module.

Anixter No.	Vendor No.	Description
024616	4047	Pair test plug

**MS<sup>2</sup> Hand Presser 4270-A**

3M



Used for plugging preterminated and spliced module combinations together. Combinations can range from two modules up to seven modules.

Anixter No.	Vendor No.	Description
087746	4270-A	Hand presser

**MS<sup>2</sup> Wire Insertion and Cutoff Tool 4051**

3M

The 4051 is used on Super-Mini Modules during cable transfers on individual conductors or for any other individual repair work. It can also be used to replace conductors back into the module.

Anixter No.	Vendor No.	Description
039218	4051	Wire insertion and cutoff tool

## Outside Plant and Building Entrance

# 3M OSP

### Scotchlok Connectors

3M



#### FILLED

Anixter No.	Vendor No.	Description
005694	UR-BX	2- to 3-wire, 19 to 26 AWG butt/2- or 3-conductor connector, 0.06 in. max. insulation OD
490871	UP3-CART	2- to 3-wire, 19 to 26 AWG butt/2- or 3-conductor connector, 0.060 in.
005695	UR-CART	2- to 3-wire, 19 to 26 AWG butt/2- or 3-conductor connector, 0.060 in. max. insulation OD
155425	UR2-BX	2-wire, 22 to 26 AWG butt/2-conductor connector, 0.060 in. max. insulation OD
346061	UR2-25/PACK	2- to 3-wire, 19 to 26 AWG butt connector, 0.082 in. max. insulation OD
005698	UY-BULK	2-wire, 22 to 26 AWG butt/2-conductor connector, 0.082 in. max. insulation OD
005697	UY-CART	2-wire, 22 to 26 AWG butt/2-conductor connector, 0.082 in. max. insulation OD
346062	UY2-25/PACK	2- to 3-wire, 19 to 26 AWG butt connector, 0.082 in. max. insulation OD
443349	U1R-BX	2-wire, 19 to 24 AWG inline connector, 0.125 in. max. insulation OD
155428	UR2-CART	2- to 3-wire, 19 to 26 AWG butt/2- or 3-conductor connector, 0.082 in. max. insulation OD
490742	UR2-BULK	2-wire, 19 to 26 AWG butt/2-conductor connector, 0.082 in. max. insulation OD
443352	UR2-JAR500	2- to 3-wire, 19 to 26 AWG butt/2- or 3-conductor connector, 0.082 in. max. insulation OD
443353	UY2-BX	2-wire, 19 to 26 AWG butt/2-conductor connector, 0.082 in. max. insulation OD
490743	UY2-JAR500	2-wire, 19 to 26 AWG butt/2-conductor connector, 0.082 in. max. insulation OD
155423	UY2BULK	2-wire, 19 to 26 AWG butt/2-conductor connector, 0.082 in. max. insulation OD
155421	UY2-CART	2-wire, 19 to 26 AWG butt/2-conductor connector, 0.082 in. max. insulation OD
140180	UCC-BULK	2-wire, 22 to 26 AWG butt/2-conductor connector, 0.060 in. max. insulation OD
039554	UCC-CART	2-wire, 22 to 26 AWG butt/2-conductor connector, 0.060 in. max. insulation OD
490744	UCC-JAR500	2-wire, 22 to 26 AWG butt/2-conductor connector, 0.060 in. max. insulation OD
443355	U1B-BX	2-wire, 16 to 19 AWG inline connector, 0.125 in. max. insulation OD
443356	UB2A-BX	2-wire, 19 to 26 AWG bridge tap/2-conductor connector, 0.082 in. max. insulation OD

#### FIRE RETARDANT AND DRY

Anixter No.	Vendor No.	Description
490746	UB2A-D-BX	2-wire, 19 to 26 AWG bridge tap/2-conductor connector, 0.082 in. max. insulation OD
035597	UP2-CART	2-wire, 22 to 26 AWG butt/2 conductor connector, 0.060 in. max. insulation OD
490863	UP2-BULK	2-wire, 22 to 26 AWG butt/2-conductor connector, 0.060 in. max. insulation OD
443357	UPC-CART	2-wire, 22 to 26 AWG butt/2-conductor connector, 0.060 in. max. insulation OD
178838	UR2-DCART	2- to 3-wire, dry, 19 to 26 AWG butt/2- or 3-conductor connector, 0.082 in. max. insulation OD
178831	UR2-D-JAR500	2- to 3-wire, 19 to 26 AWG butt/2- or 3-conductor connector, 0.082 in. max. insulation OD
178841	UY2-DCART	2-wire, 19 to 26 AWG butt/2-conductor connector, 0.082 in. max. insulation OD
443354	UY2-D-JAR500	2-wire, 19 to 26 AWG butt/2-conductor connector, 0.082 in. max. insulation OD

### Scotchlok Connector Crimping Tools

3M



Approved splicing tools for 3M Scotchlok Connectors.

Anixter No.	Vendor No.	Description
008220	E-9BM	Crimping tool with replacement jaw (for all splice types)
008219	E9C	Cartridge crimping tool used with Scotchlok connectors in cartridge form (for butt splices only)
008222	E-9E	Crimping tool (for all butt and tap connectors)
008223	E-9Y	Stepped jaws crimping tool with integrated wire cutter (for butt and tap connectors)
262737	E-9R	Ratchet release crimping tool with integrated wire cutter and spare blade
443327	E-9J	Work-saving 10:1 mechanical advantage over applied hand force. For use with Scotchlok butt and tap connectors
443328	E-9Y-P	Mechanical advantage of 3-to-1. Includes integrated wire cutter. Not for 19+ wire gauge

# Outside Plant and Building Entrance Corning Cable Systems OSP

## AnyLAN Integrated Single-Panel Housing

CORNING CABLE SYSTEMS



Corning Cable Systems AnyLAN Integrated Single-Panel Housing utilizes the AnyLAN OptiTip adapter with the small-profile single-panel housing for quick and easy deployment, eliminating the need for field-terminated and strain-relieved fiber optic cables. The housing is ideal for star, ring, point-to-point or zone architectures. Factory-terminated panels provide industry-leading quality and reliability, while eliminating the time required for field-termination methods and the need for specialized field-termination tools, training and specially prepared locations.

### FEATURES

- Ideal for use inside NEMA-rated and IP-rated enclosures and other environments where space is a premium
- Fully compatible with existing Plug & Play AnyLAN solutions

For more information, contact your local sales representative.

## AnyLAN Integrated 1U Housing

CORNING CABLE SYSTEMS



Corning Cable Systems AnyLAN Integrated 1U housing utilizes the AnyLAN OptiTip adapter with a 1U rack-mountable housing for quick and easy deployment, eliminating the need for field-terminated and strain-relieved fiber optic cables. The housing is fully compatible with existing Plug & Play AnyLAN solutions and is ideal for star, ring, point-to-point or zone architectures. The factory-terminated housing provides industry-leading quality and reliability, while eliminating the time required for field-termination methods.

### FEATURES

- Eliminates need for field termination, improving reliability and speed of deployment
- Fully compatible with existing Plug & Play AnyLAN solutions

For more information, contact your local sales representative.

## AnyLAN Ruggedized Zone Enclosure

CORNING CABLE SYSTEMS



Corning Cable Systems AnyLAN Ruggedized Zone Enclosure combines the AnyLAN OptiTip adapter with a sealed closure for quick and easy deployment, eliminating the need for field-terminated fiber optic cables. The enclosure is fully compatible with existing Plug & Play AnyLAN solutions and is ideal for easy installation of zone architectures. The factory-terminated enclosure eliminates the time required for field-termination methods while providing industry-leading quality and reliability. The ruggedized zone enclosure is easily mounted in trays, on poles or can be direct-buried for increased design versatility. Environmentally hardened MTP preterminated ends offer quick overall system deployment in even the harshest environments.

### FEATURES

- UV and vibrant resistant, with a temperature range from -40°C to +65°C
- Configurable from 12-96 fibers, single-mode and 50 μm multimode

For more information contact your local sales representative.

## Fiber Splice Closures Preloaded with Splice Trays

CORNING CABLE SYSTEMS

UCAO-05-24

UCAO Mini Closure with two UCAO-ST-02 12-fiber splice trays included for 24-fiber applications; hinged case with snap latches; four pre-molded cable ports  
SCF-4C18-01-36

4 x 18 in. Canister Closure with three SCF-ST-099 12-fiber splice trays included for 36-fiber applications; two open express cable ports, three additional easily opened QUICK-SEAL mechanical seal drop cable ports

SCF-6C22-01-72

6 x 22 in. 72-Fiber Canister Closure with six SCF-ST-099 12-fiber splice trays included for 72-fiber applications; two open express cable ports, four additional easily opened; QUICK-SEAL mechanical seal drop cable ports

SCF-6C28-01-144

6 x 28 in. 144-Fiber Canister Closure with six SCF-ST-112 24-fiber splice trays included for 144-fiber applications; two open express cable ports, four additional easily opened; QUICK-SEAL mechanical seal drop cable ports

### FEATURES

- One part-number solution for the most common fiber counts
- Trays, seals and hardware included in every kit
- Easy component additions for future expandability

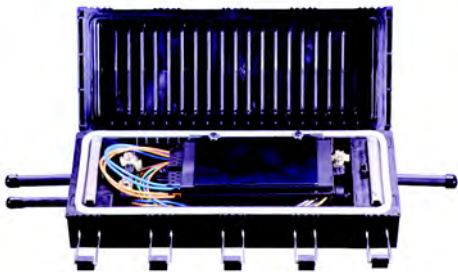
Continued on next page >>

## Outside Plant and Building Entrance

# Corning Cable Systems OSP

(continued) Fiber Splice Closures Preloaded with Splice Trays

### UCAO AND UCAO ACCESSORIES



Anixter No.	Vendor No.	Description
212092	UCAO-05-24	UCAO Closure with two UCAO-ST-02 trays for 24-fiber applications
523382	UCAO-ST-02	UCAO 0.2 splice tray; holds 12 heat-shrink splice protectors
342342	UCA-KT-AHD	UCA aerial hanging device
200373	UCAO-BK1	Wall- and pole-mount bracket

### SCF-4C18-01-36 AND 4C18 ACCESSORIES



Anixter No.	Vendor No.	Description
267141	SCF-4C18-01-36	4 x 18 in. canister with three SCF-ST-099 trays for 36-fiber applications
240045	SCF-ST-099	12-position heat-shrink 0.2 in., metal tray for single fiber
425029	SCF-KT-4CBL	Add-a-Cable Kit for two drop cables in 4 in. end cap
272032	SCF-KT-6GND	SCF-6 Ground Kit, fits all SCF closures (two per kit)
226469	BKT-SC-C	Aerial hanger bracket

### SCF-6C22-01-72/SCF-6C28-01-144 AND 6C ACCESSORIES

Anixter No.	Vendor No.	Description
212111	SCF-6C22-01-72	6 x 22 in. canister with six SCF-ST-099 trays for 72-fiber splices
212105	SCF-6C28-01-144	6 x 28 in. canister with six SCF-ST-112 trays for 144-fiber splices
242643	SCF-ST-048	12-position heat-shrink 0.2 in. metal tray for single-fiber

Anixter No.	Vendor No.	Description
272033	SCF-ST-112	24-position heat-shrink 0.2 in. metal tray for single-fiber
272032	SCF-KT-6GND	SCF-6 Ground Kit, fits all SCF closures (two per kit)
269541	SCF-KT-6CBL	Add-a-Cable Kit for two drop cables in 6 in. end cap
226469	BKT-SC-C	Aerial hanger bracket

## UCAO Splice Closure

### CORNING CABLE SYSTEMS



The UCAO Splice Closure provides excellent environmental protection for optical fiber splices.

The UCAO facilitates easy installation and access with its unique hinged case. The lid is secured with metal clips that snap open or closed. Each UCAO closure is lightweight, compact and watertight.

UCAO Splice Closures can be used in aerial, underground or direct-buried applications and accommodate up to 60 single-fiber splices. No special tools are required for closure assembly and re-entry.

#### FEATURES

- Accommodates five compact splice trays
- Equipped with reusable seals
- No stress placed on finished splices within trays
- All required components are provided in one convenient carton
- Tested in accordance with GR-771

#### APPLICATIONS

- Can be used in through-, branch- or midspan-type splice locations
- Can be used in aerial, underground or direct-buried applications
- Accommodates up to 60 single-fiber splices (UCAO-05)
- Can be mounted on a pole, wall or stand

#### UCAO CLOSURE

Dimensions (H x W x D): 121 mm x 162 mm x 381 mm (5 in. x 6 in. x 15 in.).

Anixter No.	Vendor No.	Description
523380	UCAO-05	Accepts five trays

# Outside Plant and Building Entrance Corning Cable Systems OSP

## UCAO SPLICE TRAYS

Dimensions (H x W x D): 187 mm x 92 mm x 8 mm (7.4 in. x 3.6 in. x 0.33 in.).

Anixter No.	Vendor No.	Description
523381	UCAO-ST-01	UCAO 0.2 splice tray; holds 12 bare-fiber or crimp-type protectors
523382	UCAO-ST-02	UCAO 0.2 splice tray; holds 12 heat-shrink splice protectors
397665	UCAO-ST-03	UCAO 0.4 splice tray; holds four mass fusion splice protectors
212103	UCAO-ST-04	UCAO 0.4 splice tray; holds 12 CamSplice mechanical splices
495177	UCAO-ST-06	UCAO 0.4 splice tray; holds 12 single fiber or 2 mass-splice heat-shrink protectors

## ACCESSORIES

Anixter No.	Vendor No.	Description
200372	UCAO-AHD	Aerial hanging device
200373	UCAO-BK1	Wall- and pole-mount bracket
252245	UCAO-CK1	Additional cable entry kit (10-pack)
523383	UCAO-TP	Sealing tape

## ENVIRONMENTAL DISTRIBUTION CENTER

Anixter No.	Vendor No.	Description
206695	EDC-02P-NH	Accepts two CCH panels and two Type 2R or one Type 4R reduced-length splice trays; no cable-entry holes provided
206696	EDC-06P-NH	Accepts six CCH panels and six Type 2S or three Type 4S splice trays; no cable-entry holes provided
223274	EDC-12P-NH	Accepts 12 CCH panels and 12 Type 2S, six Type 4S or six Type 4A splice trays; no cable-entry holes provided

## EDC ACCESSORIES

Anixter No.	Vendor No.	Description
499058	EDC-2EC-KIT	2 in. Conduit Standard Fitting Kit
207391	EDC-2N4-KIT	2 in. Conduit NEMA 4 Fitting Kit
401339	EDC-2WT-KIT	0.5 in. to 1 in. Watertight Compression Fitting Kit

## WALL-MOUNTABLE HOUSING ACCESSORIES

Anixter No.	Vendor No.	Description
263462	FDC-CABLE-GRND	Armored cable-grounding kit; contains one armored grounding clip and one ground strap
185322	HDWR-LOCK-KIT	Lock kit for front door of housing; contains one lock with two keys

## Environmental Distribution Center (EDC)

### CORNING CABLE SYSTEMS



The Corning Cable Systems Industrial Environmental Distribution Center (EDC) is designed for storage and protection of fiber optic connections and splices in indoor and outdoor environments. Ideal for industrial, marine, security or traffic control applications, the EDC incorporates features that accommodate the changing requirements and growing needs of fiber optic networks. The composite construction offers outstanding chemical and temperature resistance with excellent weatherability. The cover may be secured with quick-release latches or padlocked for additional security. Rated to NEMA 4X or IEC IP66, the unit offers protection from corrosion, rain, sleet, snow and windblown dust. It accepts closet connector housing (CCH) panels and splice trays for through-splicing or field-connectorization, including fusion and mechanical splices for splicing or fan-out techniques. The EDC includes the brackets required for mounting to a wall or pole and additional accessories includes a grounding kit, a rack-mount kit and various fittings.

## Outside Plant and Building Entrance

# Emerson OSP

### NetSpan FDH Compact Series Integrated Fiber Distribution Hub Solution

#### EMERSON NETWORK POWER ENERGY

As an extension to the NetSpan FDH Series of enclosures, Emerson's fiber cross-connect products have evolved into their line of ProFORM pedestals. This compact fiber distribution solution provides connections for fiber optic cables and passive optical splitters in FTTx applications. NetSpan FDH Solutions are ideal as a local convergence point (LCP) for aggregation in a centralized splitting passive optical network (PON) FTTx architecture.

Utilizing 1x32 splitter modules, these high-density, lower-port-count FDH products allow for smaller and more cost-effective deployment of fiber distribution hubs when compared to the conventional FDH cabinets. The smaller distribution count allows for deployment deeper into the network, and is ideal for MDU applications.



#### FEATURES

- FDH closure allows for flexible mounting options: pedestal (floodproof), pad, pole, vault or wall (indoor or outdoor)
- No concrete pad needed, minimizes right-of-way issues, permits not required
- Accommodates high-density, high-performance 1x32, 1x16, 1x8, 2x32 and 2x16 modular optical GR1221-1209 PLC splitters
- Splitter modules have pre-parked jumpers
- Available in 72-, 96- and 144-fiber distribution configurations
- Complete fiber management with radius limiting spools
- Self-intuitive fiber routing
- GR326-compliant termination

Anixter No.	Vendor No.	Material ID	Description
375315	NSFDH1072AXX100D	F1008492	PRO10, 72-port FDH, 100 ft. dielectric loose tube, SC/APC, no splitter included
375316	NSFDH1072A1X100D	F1008640	PRO10, 72-port FDH, 100 ft. dielectric loose tube, SC/APC, one splitter included
375317	NSFDH10V72AXX100D	F1008733	PRO10 vault pedestal, 72-port FDH, 100 ft. dielectric loose tube, SC/APC, no splitter included
375318	NSFDH10V72A1X100D	F1008734	PRO10 vault pedestal, 72-port FDH, 100 ft. dielectric loose tube, SC/APC, one splitter included
375319	NSFDH1296AXX100D	F1008493	PRO12, 96-port FDH, 100 ft. dielectric loose tube, SC/APC, no splitter included
375320	NSFDH1296A1X100D	F1008660	PRO12, 96-port FDH, 100 ft. dielectric loose tube, SC/APC, one splitter included
375321	NSFDH12144AXX100D	F1008494	PRO12, 144-port FDH, 100 ft. dielectric loose tube, SC/APC, no splitter included
375322	NSFDH12144A1X100D	F1008641	PRO12, 144-port FDH, 100 ft. dielectric loose tube, SC/APC, one splitter included
375323	NSSPLT132AD	F1008495	1x32 splitter module, SC/APC for PRO10 FDH
375324	NSSPLT132AE	F1008496	1x32 splitter module, SC/APC for PRO12 FDH

Other configurations available. For more information contact your local sales representative.

### NetSpan FDP Series Integrated Fiber Distribution Pedestal Solution

#### EMERSON NETWORK POWER ENERGY



The NetSpan FDP Series of optical splice and distribution products permits fiber splicing, improves cable organization and allows for either spliced drops or environmentally hardened drop connections in fiber-to-the-premise (FTTP) applications. The integrated platform can be configured with an open-fiber architecture for a cost-effective FTTP solution or a weather-tight closure by adding sliding covers for added protection against the elements, debris and insects. The unique back-to-back platform accommodates a spliced drop solution with fiber splicing and spliced drops on one side and environmentally hardened drop

connections on the other side for a terminated drop solution. Use both sides to create an integrated fiber distribution pedestal solution.

#### FEATURES

- Back-to-back configuration eliminates the need for a handhole/vault
- Fiber splice and drops housed in separate closures
- Optional use of environmentally hardened drop solution

Anixter No.	Vendor No.	Description
352535	NSFDP8XS0X	Empty rear, open splice front
352536	NSFDP8XSCX	Empty rear, closed splice front
352537	NSFDP8SC2CX	Closed splice rear, closed 2-port OptiTap front
352538	NSFDP8SC4CX	Closed splice rear, closed 4-port OptiTap front
352539	NSFDP8SC6CX	Closed splice rear, closed 6-port OptiTap front
352540	NSFDP8S0UX	Open splice rear, open universal mounting bracket front
352541	NSFDP10XS0X	Empty rear, open splice front
352542	NSFDP10XSCX	Empty rear, closed splice front

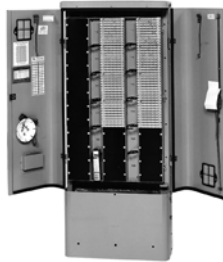


Anixter No.	Vendor No.	Description
352543	NSFDP10SC2CX	Closed splice rear, closed 2-port OptiTap front
352544	NSFDP10SC4CX	Closed splice rear, closed 4-port OptiTap front
352545	NSFDP10SC6CX	Closed splice rear, closed 6-port OptiTap front
352546	NSFDP10SC8CX	Closed splice rear, closed 8-port OptiTap front
352547	NSFDP10SC60X	Closed splice rear, open 6-port OptiTap front
352548	NSFDP10SC80X	Closed splice rear, open 8-port OptiTap front
352549	NSFDP10SOUX	Open splice rear, open universal mounting bracket front

Other configurations available. For more information contact your local sales representative.

### NetReach XC LC Swing-out Series Integrated Cross-connect Cabinets

EMERSON NETWORK POWER ENERGY



The NetReach XC LC Swing-out Series (formerly the ERLS/ECQF Series) single-access cross-connect interface cabinets are an economical alternative for low pair-count applications. These enclosures are field-splice cross-connect terminals that may be stake- or pad-mounted and equipped with 100 to 900 pair of RLS50 IDC terminal blocks. The RLS50 IDC terminal blocks can be equipped with all the industry-standard splice modules - 4005DPM, 4005GBM, 4000D, CF/710 or without splice modules. The enclosure is available in a white or green finish. RUS listed. With RLS50 terminal blocks, no connectors, green.

Anixter No.	Vendor No.	Description
280648	FSERLS400	400-pair
280649	FSERLS600	600-pair
280650	FSERLS900	900-pair

### NetReach XC UC Drop-down Series Integrated Cross-connect Solution

EMERSON NETWORK POWER ENERGY



The UC Series, (formerly UltraCab Series) is a drop-down-style, center-feed, cross-connect interface system with 50-pair terminal blocks in pair counts up to 8,100 pairs. Cabinets are equipped with RLS50 terminal blocks, a test cord, jumper wire spool hardware, pair identification labels and other accessories. Drop-down-style block panels provide very short, easily traceable jumper runs. Feeder (in) pairs are located in the center panels and distribution (out) pairs in the left and right outboard panels. RUS listed.

#### SINGLE-ACCESS CROSS-CONNECT CABINET

Equipped with RLS50 terminal blocks, no connectors, white.

Anixter No.	Vendor No.	Description
280651	FSDRLS1200SW	1,200-pair
280653	FSDRLS1800SW	1,800-pair
280654	FSDRLS2700SW	2,700-pair

#### DOUBLE-ACCESS CROSS-CONNECT CABINET

Equipped with RLS50 terminal blocks, no connectors, white.

Anixter No.	Vendor No.	Description
280656	FSDRLS2700DW	2,700-pair
280657	FSDRLS3600DW	3,600-pair
280658	FSDRLS5400DW	5,400-pair

#### DOUBLE-ACCESS LOW-PROFILE CROSS-CONNECT CABINET

Equipped with RLS50 terminal blocks, no connectors, white.

Anixter No.	Vendor No.	Description
280659	FSDRLS54LPDW	5,400-pair
280661	FSDRLS7200DW	7,200-pair
280662	FSDRLS8100DW	8,100-pair

## Outside Plant and Building Entrance

# Emerson OSP

### ProFORM Series Pedestals

EMERSON NETWORK POWER ENERGY



The ProFORM Series of pedestals are the premier line of nonmetallic pedestals from Emerson. These pedestals incorporate strength, rigidity and security all in a high-performance thermoplastic material that meets Telcordia GR-13 CORE and RUS PE-91 specifications. The ProFORM pedestal provides the most craft-friendly design on the market. Optimal working space is ensured for splicing, bonding and grounding, terminal block attachment, service wire entry, conduit placement and wire grooming and management. Further, the ProFORM pedestal provides simplified and easy access installation through its split/rehab base design, slide-and-secure mounting plate assembly and self-latching dome. Supplemental mounting stakes are available.

The ProFORM pedestal's unique shape provides superior splicing capacity, to better secure open-wire bundles and/or wirework enclosures. Its shape also provides improved aesthetics over competitive plastic pedestals, for a "less industrial" appearance. RUS listed.

#### NONMETALLIC SPLIT-BASE PEDESTAL

Includes mounting plate.

Anixter No.	Vendor No.	Description
352326	PRO6HSRNG	6 in.
352328	PRO8HSRNG	8 in.
352330	PRO10HSRNG	10 in.
352332	PRO12HSRNG	12 in.

#### NONMETALLIC FLOOD-PROTECTED PEDESTAL

Anixter No.	Vendor No.	Description
352333	PRO14	14 in. x 14 in. with mounting plate
352334	PRO1420	14 in. x 20 in.
352335	PRO1830	18 in. x 30 in.

### Distribution Pedestals (UPC Series)

EMERSON NETWORK POWER ENERGY

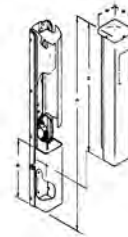


Models UPC/BD-3, UPC/BD-4 and UPC/BD-5 are round-corner, square-design telephone distribution closures. They are RUS listed and used to accommodate buried wires, cables, terminal blocks and load coil assemblies. Ideal for cable splicing.

Internal components also included are dielectric shield and grounding bracket that accepts a standard ground lug/connector. Also available with a divider plate. MS-type stake must be ordered separately. See pedestal accessories. Standard cabinets have a gray-green finish. Accessories available. Offset brackets required for mounting terminal blocks must be ordered separately.

Anixter No.	Vendor No.	Dim. A (in.)	Dim. B (in.)	Dim. C (in.)	Dim. D (in.)	Dim. W (in.)
023484	UPCBD3	37.25	12	25.25	6 3/4	6 3/4
023485	UPCBD4	37.25	12	25.25	8.5	8.5
023486	UPCBD5	43.25	12	31.25	10.5	10.5

#### SPLICED USING ANY CONNECTOR



Anixter No.	Vendor No.	RUS Accepted	UPC Suggested
023484	UPCBD3	100	100
023485	UPCBD4	400	400
023486	UPCBD5	600	600

#### TERMINAL BLOCKS (RUS LISTED)

Anixter No.	Vendor No.	6-Pair Unprotected 145B	1-Pair Protected 283/281	3-Pair Protected 283/381
023484	UPCBD3	3	3	3
023485	UPCBD4	3	3	3
023486	UPCBD5	4	3	5

#### A-LINE SERIES UNPROTECTED TERMINAL BLOCKS

Anixter No.	Vendor No.	RGT/RPT5A	RGT/RPT10A	RGT/RPT25A
023484	UPCBD3	2	2	2
023485	UPCBD4	2	2	2
023486	UPCBD5	2	2	2

#### A-LINE SERIES PROTECTED TERMINAL BLOCKS

Anixter No.	Vendor No.	RGT/RPT5PA	RGT/RPT10PA	RGT/RPT25PA
023484	UPCBD3	1	1	1
023485	UPCBD4	1	1	1
023486	UPCBD5	1	1	1

Distribution Pedestals High Pair Count (UPC Series)

EMERSON NETWORK POWER ENERGY



The UPCBD7 is a round-corner, square-design telephone equipment cabinet that is RUS listed. Included are two PVC-coated splice support bars, ground and cable support bar, grounding connector, weather stripping and two mounting stakes. The UPCBD7 closures are used for splicing, load coil mounting, mounting cross-connect systems, terminal blocks and carrier units. Standard cabinets have a gray-green finish. Accessories available.

Anixter No.	Vendor No.	Splice	Cable Size (in.)	External Loading
023487	UPCBD7	1,800-pair	3.0	400-pair

Single-mount Stakes/Protector Mounting Posts

EMERSON NETWORK POWER ENERGY



Models MS1324, MS1332 and MS1342 are 24 in., 32 in. and 42 in. stakes (respectively), with hardware. For use on all closures. Green finish, 10 per pack.

The mobile home series posts (MHP) are heavy-gauge U-shape channel posts with a 3 in. x 16 in. plate attached. Used for mounting 1- or 2-pair outdoor station protectors and are adjustable from 36 to 48 in. RUS listed.

The protector mounting series posts (PMP) are heavy-gauge U-shape channel posts with a 3 in. x 5 1/2 in. plate attached. Used for mounting 1- or 2-pair outdoor station protectors.

Anixter No.	Vendor No.	Length (in.)	Description
003103	MS1324	24	Hardware included
052215	MS1332	32	Hardware included
023488	MS1342	42	Hardware included
003064	MHP36	36	RUS-approved protector or NIDs not included
266119	PMP50	50	Protector or NIDs not included

Stake-mounting Hardware

EMERSON NETWORK POWER ENERGY



Standard stake-mounting hardware for MS-1324, MS-1332 and MS-1342 stakes.

Anixter No.	Vendor No.	Description
109138	UPCBDHDW	Stake-mounting hardware

Cable Terminal Blocks

EMERSON NETWORK POWER ENERGY



Cable terminal blocks are available in a variety of styles for all applications. They are either unprotected or protected with carbon, gas or solid state; stubbed with various cable types and lengths or unstubbed; in a plastic, aluminum or metal housing or no housing; and are available in many pair-count configurations. The following is a list of the more readily available cable terminals and blocks.

Anixter No.	Vendor No.	Protection	No. of Pairs	Cable Stub Length	Application
126118	RPT25VSR2A4	Gas	25	4 ft.	All are for Buried Closure or Pedestal use
163148	RGT25VSR2ALS	Gas	25	None	
073367	RPT10A4	None	10	4 ft.	
024078	RPT25A4	None	25	4 ft.	
041641	RGT25ALS	None	25	None	
156327	RGT1236	None	12	3 ft.	
160936	RGT25A4	None	25	4 ft.	

## Outside Plant and Building Entrance

# Emerson OSP

### One-pair Testers

EMERSON NETWORK POWER ENERGY



One-pair testers allow electrical access to an individual pair in a 25-pair BT, 50-pair CQF or RLS blocks used in any of the interface terminals manufactured by Emerson.

#### ONE-PAIR TESTER

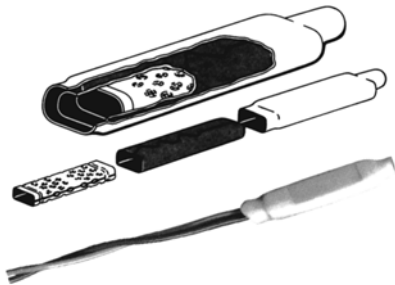
Anixter No.	Vendor No.	Description
154825	P22368	With 5 ft. leads BT 25-pair block
124209	P33392	With 5 ft. leads for CQF 50-pair block
176283	RLSTEST1	With 5 ft. leads for RLS block and 3M SS-25

#### ONE-PAIR POCKET TESTER

Anixter No.	Vendor No.	Description
154822	F019127	For RLS block and 3M SS-25
154823	P62633	For CQF 50-pair block
154824	P62632	For BT 25-pair block

### RB Series Wire Splicing Connectors (B-wire Connector)

EMERSON NETWORK POWER ENERGY



RB wire splicing connectors are available dry or grease filled. They provide 100 percent electrical crimp splices equivalent to soldered connections on various sizes of solid wire having plastic, pulp and single-wrapped paper insulation.

Simply insert a stripped or unstripped wire end into the connector and crimp the brass connector shell with an RB crimping tool. The tin-plated phosphor bronze insert contains sharp internal tangs to penetrate wire insulation and create a positive electrical connection.

Anixter No.	Vendor No.	Description
209819	RBD100PKG	100/pk, white
209820	RBD1000PKG	1,000/pk, white
209821	RBGD1000PKG	1,000/pk, grease filled, blue

## FOSC Gel Sealed Splice and Patch Closures

### TE CONNECTIVITY

The FOSC family of fiber optic splice closures are usable in all outside plant fiber-splicing applications. Utilizes compressed gel cable sealing and a quick release dome-to-base clamp for fast access to the splicing area. There are a variety of sizes to choose from, each capable of handling a range of cable styles and sizes, and incorporating such features as hinging splice trays. FOSC closures are accompanied by a full line of accessories as well.



Anixter No.	Vendor No.	Material ID	Description
404938	A08617-000	FOSC450-A4-4-NT-0-A1V	A4 closure with four cable attachments, A-sized slack storage basket, one feedthrough ground lug and flash test valve. Kit does not include splice tray (available separately)
495471	F34112-000	FOSC450-BS-6-NT-0-B0V	BS (B Short) closure with six cable attachments, BS-sized slack storage basket and flash test valve. Kit does not include splice tray (available separately). Kit does not include a feedthrough ground lug as this is not available on this closure model
268168	058514-000	FOSC450-B6-6-NT-0-B3V	B6 closure with six cable attachments, B-sized slack storage basket, three feedthrough ground lugs and flash test valve. Kit does not include splice tray (available separately)
404939	J1945R-000	FOSC450-C6-6-NT-0-C6V	C6 closure with six cable attachments, C-sized slack storage basket, six feedthrough ground lugs and flash test valve. Kit does not include splice tray (available separately)
268169	931866-000	FOSC450-D6-6-NT-0-D6V	D6 closure with six cable attachments, D-sized slack storage basket, six feedthrough ground lugs and flash test valve. Kit does not include splice tray (available separately)
495473	EK9632-000	FOSC450-B6-4-NT-0-N0V	B6 closure with four cable attachments and flash test valve. Kit does not include splice tray (available separately), slack storage basket (available separately) or feedthrough ground lugs
495474	V98542-000	FOSC450-BS-4-NT-0-N0V	BS (B Short) closure with four cable attachments and flash test valve. Kit does not include splice tray (available separately), slack storage basket (available separately) or feedthrough ground lugs
495475	KR7894-000	FOSC450-C6-4-NT-0-N0V	C6 closure with four cable attachments and flash test valve. Kit does not include splice tray (available separately), slack storage basket (available separately) or feedthrough ground lugs
495476	C06369-000	FOSC450-D6-4-NT-0-N0V	D6 closure with four cable attachments and flash test valve. Kit does not include splice tray (available separately), slack storage basket (available separately) or feedthrough ground lugs
313978	A89777-000	FOSC450-A4-4-NT-0-N1V	A4 closure with four cable attachments, one feedthrough ground and flash test valve. Kit does not include splice tray (available separately) or slack storage basket (available separately)
495477	47214Z-000	FOSC450-B6-4-NT-0-N3V	B6 closure with four cable attachments, three feedthrough grounds and flash test valve. Kit does not include splice tray (available separately) or slack storage basket (available separately)
495478	DM6321-000	FOSC450-C6-4-NT-0-N3V	C6 closure with four cable attachments, three feedthrough grounds and flash test valve. Kit does not include splice tray (available separately) or slack storage basket (available separately)
495479	E43425-000	FOSC450-D6-4-NT-0-N3V	D6 closure with four cable attachments, three feed-through grounds and flash test valve. Kit does not include splice tray (available separately) or slack storage basket (available separately)

## Outside Plant and Building Entrance

# TE Connectivity OSP

### FIBRBox Patch and Splice Enclosures

TE CONNECTIVITY



FIBRBox splice enclosures offer TE Connectivity's proven fiber splice management and organizing performance in a rugged enclosure designed for today's FTTx applications. FIBRBox splice enclosures combine a corrosion-resistant enclosure, gasket and grommet entry points, and the familiar stair-stepped, hinging tray design in an enclosure that will accommodate two feeder cables and up to sixteen drop cables (depending upon the drop cable design).

Anixter No.	Vendor No.	Description
445714	FIBRBOX-B-NT-0-NT	B-size pedestal enclosure
445715	FIBRBOX-C-NT-0-NT	C-size pedestal enclosure

For more information on TE Connectivity's Flexible FIBRBox and its configurations, please contact your local representative.

### GATOR Drop Repair Kit

TE CONNECTIVITY



The GATOR splice closure is a small butt-splice closure primarily designed for splicing two loose-tube "flat drop" style cables of one to 12 fibers in above-ground, below-grade and direct-buried applications. The closure includes Telesplice connector for toneable drops.

Anixter No.	Vendor No.	Description
445717	FDSC-GATOR-12F-T	GATOR drop repair/connection closure for flat drop-type cables only. Comes complete for up to 12 single or one mass fusion splice

For more information on TE Connectivity's GATOR Drop Repair Kit and its configurations, please contact your local representative.

## Outside Plant and Building Entrance

# Miscellaneous OSP Products

### Series BC Butt Splice Case

URASEAL HYSOL COMMUNICATIONS

Designed to replace the cumbersome tape method formerly used for indoor or outdoor communications butt splices. Butt splices can be installed in roughly half the time required for tape wrapping, and can be removed for re-entry and then replaced. In addition, butt splice cases are watertight when properly installed, except under flood conditions.

The case has a rigid PVC inner liner that provides mechanical protection, with a soft outer PVC jacket shell that extends beyond the rigid portion at the open end. When the stainless steel clamp is tightened, the soft jacket shell conforms to the tape wrapping over the cable and seals the splice. Tapes not included.

Anixter No.	Vendor No.	Description
032621	BC1217	2 in. x 17 in. x 2 in.
119954	BC1318	3 in. x 18 in. x 3 in.
032623	BC1324	3 in. x 24 in. x 2 in.

### Series CK Capping Kits

URASEAL HYSOL COMMUNICATIONS

Designed to quickly cap communications cables. Since the capping kit is also fungus resistant and moistureproof, it can be used for capping either aerial or buried cables. The CK Capping Kit can also be used to splice up to 6-pair buried wires for direct burial. Caps cables in just three minutes.

The CK Capping Kits are completely self-contained, eliminating the need for separate components. Kits consist of a semiflexible tube containing resin and hardener, mixing paddle, form centering device and illustrated instruction. The container is equipped with a removable barrier which separates the encapsulating resin and hardener. When the cable to be capped has been prepared in the normal manner, the barrier is removed by cutting off the flat heat-sealed end of the tube. The two components are then mixed together with the mixing paddle and the cable is inserted into the foam centering device, pushed into the tube, and held for a short time. If the CK kit is to be used for buried service wire splices, an aluminum U-bolt connector can be supplied for sheath continuity.

Anixter No.	Vendor No.	Description	Quantity (grams)
066825	CK137	1.4 in. opening x 6 in. length	95
049846	CK200	2 in. opening x 6 in. length	145

## Outside Plant and Building Entrance

# Pole Line Hardware

### GUY-GRIP Dead-ends

PREFORMED LINE PRODUCTS



For use on extra-high-strength, high-strength, Siemens Martin, utilities-grade, galvanized steel strand, performance match Bezinal, GUY-GRIP dead-ends, false dead-ends and strand splices available.

Anixter No.	Vendor No.	Strand Size (in.)	Mean Dia.	Length (in.)	Color Code
022405	GDE-1104LA	1/4	0.240	25	Yellow
002839	GDE-1104	1/4	0.240	25	Yellow
002845	GDE-1106	5/16	0.312	31	Black
032840	GDE-2106	5/16	0.312	31	Black

### False Dead-ends

PREFORMED LINE PRODUCTS



Galvanized-steel wire strand.

Anixter No.	Vendor No.	Size	Mean Dia.	Length (in.)	Color
002840	GFDE-2121	1/4	0.240	36	Yellow
024564	GFDE-2123	5/16	0.312	38	Black
002851	GFDE-2124	3/8	0.360	42	Orange

### Universal Strandlink (Pickle)

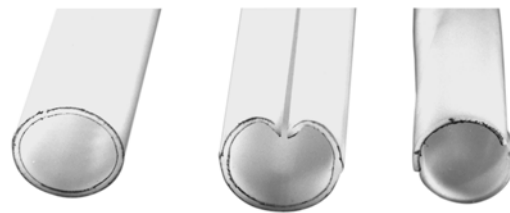
MACLEAN POWER SYSTEMS

Used wherever a holding device is required for splicing strand. Universal Strandlink splices all types, sizes and grades of the specified strands, ranging from 0.140 in. and 0.520 in. diameter. Recommended for use on Alumnaweld, galvanized (zinc-coated), aluminized, Bethalume, Copperweld and stainless steel 7-wire, 3-wire strands.

Anixter No.	Vendor No.	Std. Size (in.)	Wire Range
006563	5040(A)	1/4	0.215-0.270

### Guy Markers

PREFORMED LINE PRODUCTS



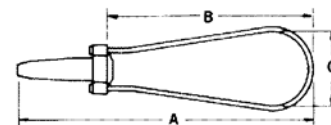
Used for identifying down guys or other wire and cable installations where anchoring devices are exposed to pedestrian and/or vehicular traffic. Pedestal markers and many other styles, colors and attachment types available.

Anixter No. Vendor No. Description

267162	PG-5718	Off-white
267163	RPG-5618	8 ft. yellow reflective tape PVC 1.5 in. round PT/SLS

### Universal Strandwise

MACLEAN POWER SYSTEMS



Universal Strandwise terminates all types, sizes and grades of the specified strands, ranging from 0.140 in. through 0.520 in. diameter. Recommended for use on Alumnaweld, galvanized (zinc-coated), aluminized, Bethalume, Copperweld and stainless steel 7-wire, 3-wire strands.

SHORT BAIL

(B) means RUS Telephone and Electrical Approved; (C) means Electrical Approved

Anixter No.	Vendor No.	Std. Size (in.)	Bail Type	Wire Range	Dim. A (in.)	Dim. B (in.)	Dim. C (in.)
003282	5200(B)	1/4	A	0.215-0.270	9	4.75	1.63
003289	5201(B)	5/16	A	0.270-0.315	10.22	4.69	1.63
003296	5202(C)	3/8	A	0.325-0.392	12.50	5.75	1.56

### All-grades Strandwise

MACLEAN POWER SYSTEMS

Used to terminate aerial support strand (messenger), and at the top and bottom ends of down guys. Recommended for use on 7-wire strands and solid wire, galvanized (zinc-coated), aluminized and Bethalume.

Anixter No.	Vendor No.	Strand Size (in.)	Bail Type	Wire Range
003280	5100	1/4	Short	0.240-0.253
003291	5102	3/8	Short	0.360-0.405
003281	5150	1/4	Long	0.240-0.253



# Pole Line Hardware

## All-grades Strandlink (Pickle)

HUBBELL ELECTRICAL PRODUCTS

Used wherever a holding device is required for splicing steel strand messengers. Recommended for use on galvanized (zinc-coated), aluminized and Bethalume 7-wire strands and solid wire, but not on 3-wire stranded nor Alumnaweld.

Anixter No.	Vendor No.	Wire Range
006567	5002(B)	0.360-0.405

## "D" Drop-wire Clip



Used to form a P-Drip Loop in the aerial drop-wire cable at the point of attachment of the drop-wire clamp or the porcelain knob attachment.

Anixter No.	Vendor No.	Description
156830	D2	2-pair

## "RE" Drop-wire Clip

MACLEAN POWER SYSTEMS



Used to secure aerial drop wire to wood or masonry surfaces.

Anixter No.	Vendor No.	Description
156831	RE2	"RE" drop-wire clip

## Drop-wire Clamp



Drop-wire clamps are used to support both ends of telephone drop, at strand and building.

### FEATURES

- Used to support both ends of telephone drop, at strand and building
- Suitable for 1- to 2-pair 0.2 in. maximum height and 410 ft. maximum width
- 6-pair version: 0.3 in. maximum height and 0.5 in. maximum width

- Stainless steel bail wire on all versions
- Bell packaging available

### Anixter No. Vendor No. Description

063657	23-44441	Aluminum drop-wire clamp, 1- to 2-pair, serrated
330537	23-44444	Aluminum drop-wire clamp, 1- to 2-pair, serrated, 25/pack
330538	23-44445	Aluminum drop-wire clamp, 1- to 2-pair, serrated, 250/pack
243861	23-88881	Stainless steel drop-wire clamp, 1- to 2- pair, serrated, 25/pack
140489	23-88885	Stainless steel drop-wire clamp, 1- to 2-pair, serrated, 250/pack

## Drop-wire Hook

Anixter No.	Vendor No.	Description
003468	30-01732	Drop-wire hook, Pack of 50

## "P" House Hooks for Drop Wire

### FEATURES

- Used to secure coaxial cable drop installations at the building
- Accepts bailwire drop-wire clamps, wire grips or messenger wraps
- Mechanically galvanized steel ASTM B695

Anixter No.	Vendor No.	OA Size (in.)	Description
003933	31-00809	3 3/4	Regular house hook
330508	31-10809	4 1/2	Long house hook

## Lag Screws



Rolled threads, square heads, hot-dip galvanized Gimlet point, Fetter drive type.

Anixter No.	McGraw No.	Chance No.	Size (in.)	Min. Thread Length (in.)	Min. Thread Length (cm)
003951	DF1L2	8722GP	1/4 x 2	1 1/2	2.9
003960	DF6L3	----	3/8 x 3	2	9.9
003975	DF7L450	5087541/2	1/2 x 4-1/2	2 3/4	26.2
344069	DF6L4	508744	3/8 x 4	2 1/2	12.8

## Outside Plant and Building Entrance

# Pole Line Hardware

### Straight Forged Thimbleye Bolts with Square Nut

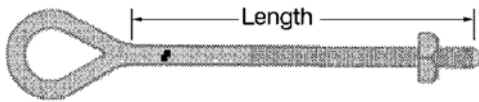


Hot-dip galvanized. Used for attaching guys to poles, buildings and crossarms, eliminating the need for thimbles, strain plates, guy hooks and extra strand.

Hot-dip galvanized, 5/8 in. diameter, minimum tensile strength 12,400 lb.

Anixter No.	McGraw No.	Chance No.	Bolt Length (in.)	Thread Lgth. (in.)	Approx. Wt. lb./100
003734	DG1F10	5510	10	4	142
003735	DG1F12	5512	12	6	160
003736	DG1F14	5514	14	6	172
003737	DG1F16	5516	16	6	186

### Forged Oval Eye Bolts



Hot-dip galvanized. Used with other pole line hardware items for overhead guying and dead-ending. 5/8 in. shank diameter, minimum tensile strength 12,400 lb.

Anixter No.	McGraw No.	Chance No.	Bolt Length (in.)	Thread Lgth. (in.)	Approx. Wt. lb./100
003709	DF2E12	29962	12	6	160
003710	DF2E14	29964	14	6	176
003712	DF2E16	29966	16	6	200

### Machine Bolts



Square head and square nut, hot-dip galvanized

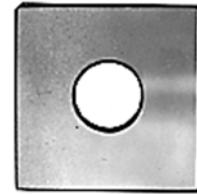
5/8 in. diameter. Minimum tensile strength: 12,400 lb.

3/4 in. diameter. Minimum tensile strength: 18,350 lb.

Anixter No.	McGraw No.	Chance No.	Bolt Length (in.)	Thread Lgth. (in.)	Approx. Wt. lb./100
003806	DF3B6	8806	6	3	68.0
003808	DF3B8	8808	8	4	82.0
003811	DF3B10	8810	10	6	98.0
003812	DF3B12	8812	12	6	112.0
003813	DF3B14	8814	14	6	128.0
003814	DF3B16	8816	16	6	146.0
003815	DF3B18	8818	18	6	162.0

Anixter No.	McGraw No.	Chance No.	Bolt Length (in.)	Thread Lgth. (in.)	Approx. Wt. lb./100
003826	DF4B12	8912	12	6	170.0
003827	DF4B14	8914	14	6	184.0
003828	DF4B16	8916	16	6	212.0

### Square Washers



Hot-dip galvanized-curved washers.

#### FLAT

Anixter No.	McGraw No.	Chance No.	Size (in.)	Hole Dia. (in.)	For Bolt Dia. (in.)
004149	DF2W2	6812	2 x 1/8	11/16	5/8
004150	DF2W4	6813	2 1/4 x 3/16	11/16	5/8

#### CURVED

Anixter No.	McGraw No.	Chance No.	Size (in.)	Hole Dia. (in.)	For Bolt Dia. (in.)
004162	DF4W2	6822	2 1/4 x 3/16	11/16	5/8
004164	DF4W4	6823 1/2	3 x 1/4	11/16	5/8
070023	DF4W9	6825	3 1/4 x 1/4	13/16	3/4

### Eye Nuts



#### THIMBLEYE NUTS

For attaching to thru-bolts or threaded end of straight or angle thimbleye bolts for straight-away head guys. Nuts are contoured to minimize bending and kinking of guy strand.

Anixter No.	McGraw No.	Chance No.	For Bolt Dia. (in.)	Max. Strand Size (in.)	Weight lb./100
003904	DG1E1	6510	5/8	1/2	92

#### OVALEYE NUTS

For dead-ending, fits back-guying and attaching pole head guys on the threaded ends of crossarm bolts.

Anixter No.	McGraw No.	Chance No.	For Bolt Dia. (in.)	Max. Strand Size (in.)	Weight lb./100
003906	DG2E3	6502	5/8	1/2	63

# Pole Line Hardware

## Guy Hook (Ram's Horn)



Accommodates guy strand at a 90° angle to the pole. May be used for down-guy attachment with excellent load-holding capabilities.

Anixter No.	Vendor No.	Description
002755	GH51LS	5/8 in. bolt

## Anchor Rods

Hot-dip galvanized rods.

Anixter No.	McGraw No.	Chance No.	Rod Dia. (in.)	Rod Lgth. (ft.)	Approx. Wt. lb./100
002902	DA3S8	5328	3/4	8	1,250
002893	DA1D6	5346	5/8	6	650
002903	DA2D8	5358	3/4	8	1,270
055564	DA6 T10	7574	1 1/4	10	4,400

## Expanding Anchors

CHANCE



Anixter No.	Chance No.	Hole Size (in.)	Area Square (in.)	Rod Size (in.)	Anchors per Ctn.	Approx. Wt. lb./100
002716	88135	8	0.135	5/8, 3/4	6	60

## Tripleye No-wrench Screw Anchors



Hot-dip galvanized, welded helix.

Anixter No.	McGraw No.	Chance No.	Dia. (in.)	Rod Dia. (in.)	Rod Lgth. (ft.)	Approx. Wt. lb./100
002707	DA1N1	4345	4	3/4	4 1/2	805
002711	DA2N1	6346	6	3/4	5 1/2	1,087

## Lashed Cable Supports



Anixter No.	Vendor No.	Max. Size Lgth. (in.)	Qty. Dia. (in.)	Cable Cir. (in.)	Per Ctn.
003509	34-08912	10	3/4	2 5/16	500
039522	34-08922	16	13/16	3 5/8	500
043038	34-08932	22	2	6 5/16	300

## Drive Rings



Anixter No.	Vendor No.	Fiber Capacity	Length (in.)	No. per Box	Std. Pkg.
003940	30-00801	1/2	2 1/16	50	2,500
003942	30-00804	5/8	2 1/4	25	1,000
003944	30-00805	7/8	2 9/16	25	500
003946	30-00807	1 1/4	2 15/16	25	250

## Outside Plant and Building Entrance

# Pole Line Hardware

### Bonded Copper Ground Rods



For cable to driven rod. Ground rod fabricated of extra-high-strength steel core for greater rigidity in driving. Completely covered with uniform thickness of positively bonded, electrolytically pure copper for lasting corrosion resistance. Copper coating is hard for abrasion resistance in rocky soil. REA and UL Listed.

Anixter No.	Vendor No.	Rod Size (in. x ft.)
002935	611255	1/2 x 5
002942	611380	1/2 x 8

### Ground Rods

Galvanized ground rods with cone point for easy driving and a plain end for attaching a ground-rod clamp.

Anixter No.	Chance No.	Diameter (in.)	Length (in.)	Weight lb./100
002951	8578	5/8	8	800

### Ground-rod Clamps



Hot-dip galvanized. 5/8 in. rod diameter; 3/8 in. x 7/8 in. set screw size; No. 10-1/0 ground wire.

Anixter No.	Vendor No.	Description
089722	C2030344	Ground-rod clamps

### "D" Cable Lashing Clamps (Bug Nuts)



Furnished with double-ended stud bolt and washers and free-running nuts, all galvanized. Packed 100 per box, 300 per carton. Weight: 15.3 lb./100.

One nut secures clamp to strand/messenger, other nut secures lashing wire between washers.

Anixter No.	Vendor No.	Description
003230	26-09010	"D" cable lashing clamps

### Ground Clamps



Anixter No.	Vendor No.	Vendor	Description
077217	8981	AK Stamp	C Ground Clamp. For grounding to cold-water pipe, electrical conduit or grounding rods
006325	J	Blackburn	Cast bronze. For grounding wire to water pipe

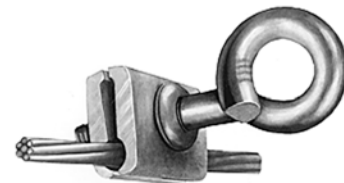
### Cast Ground Rod Clamps



For cable to driven rod. Designed to maintain perfect alignment between ground wire and rod. Maintains constant high-pressure contact. Cast of high-strength aluminum bronze, having a tensile strength of 75,000 psi.

Anixter No.	Vendor No.	Nom. Rod Dia. (in.)	Wire Range
330486	JAB58H	5/8	1/0 str. max. to 8 sol. min.

### Span Clamps



Attaches drop grip to strand.

Anixter No.	Vendor No.	Style	Std. Pkg.	Lb./100
003236	27-00869	C	50	44.0

# Pole Line Hardware

## Jumper Clamps

ARRIS INTERNATIONAL



### FUNCTION

Clamps ground wire to strand.

Anixter No.	Vendor No.	Description
322610	209589	Jumper clamps

## Cable Suspension Clamps

CHANCE



Part No. 003253 is used on very light cables.

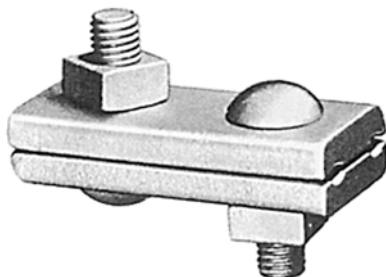
Part Nos. 003256 and 003258 are used on straight runs.

Part No. 003260 is used at corners and angles.

Anixter No.	Clamp Lgth. (in.)	Strand Dia. (in.)	Description
003253	2 1/2	1/4 - 7/16	1 bolt straight suspension
003256	5 3/4	1/4 - 7/16	3 bolt straight suspension
003258	5 3/4	1/4 - 7/16	3 bolt straight suspension, flat keeper plate
003260	7	1/4 - 7/16	3 bolt angle suspension

## Guy Clamps

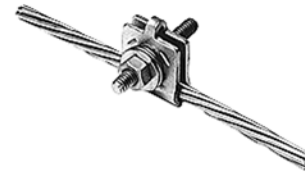
CHANCE



Parallel grooves trap strand tightly without marring. Plate halves align evenly for easy application. Each bolt has a shoulder to prevent turning while tightening.

Anixter No.	Chance No.	No. Bolts	Bolt Dia. (in.)	Clamp Lgth. (in.)	Clamp Wdth. (in.)
002803	6461	3	5/8	6	1 21/32

## "E" Cable Lashing Clamps



These clamps are the same as the "D" type except the plates are of one-piece construction.

Anixter No.	Vendor No.	Qty. per Box	Qty. per Ctn.	Weight lb./100
003232	26-09020	100	300	11

## One- and Two-hole Clamps

These clamps are used in CATV, telephone, LAN and other utility installations to support and secure cable, wire conduit and pipe. All clamps are made of high-quality steel and are galvanized to resist corrosion. One-hole clamps are available in a full range of sizes to accommodate 3/16 in. to 1 1/4 in. cable. Two-hole clamps are available in a full range of sizes to accommodate 7/16 in. to 3 1/2 in. cable. REA accepted. Manufactured in USA.

### ONE-HOLE CLAMPS



Anixter No.	Vendor No.	Cable Size (in.)	Nearest Pipe Size (in.)
003842	24-80004	1/4	---
003846	24-80007	7/16	---
003848	24-80008	1/2	1/4
003850	24-80010	5/8	---
003852	24-80012	3/4	1/2
003854	24-80016	1	3/4
043251	24-80018	1 1/8	---

Continued on next page >>

## Outside Plant and Building Entrance

# Pole Line Hardware

(continued) One- and Two-hole Clamps

### TWO-HOLE CLAMPS



Used to support cable, conduit or pipe; offset provides a grip on multisize cable; mechanically galvanized steel ASTM B695.

Anixter No.	Vendor No.	Size	Cable Size (in.)	Hole Dia. (in.)
330509	25-80100	10	5/8	7/32
330517	25-80120	12	3/4	9/32
330524	25-80140	14	7/8	9/32
330525	25-80160	16	1	9/32
330526	25-80200	20	1	9/32
330529	25-80300	30	1 7/8	9/32
330531	25-80360	36	2 1/4	11/32
330532	25-80400	40	2 1/2	11/32

### Pole-mounted Support Clamps



Used in CATV and telephone aerial construction to secure cable and multipair distribution to the pole. For use with 1/2 in. to 5/8 in. through bolts (not furnished).

0.109 in. to 0.134 in. messenger size range.

Approximately 78.8 lb per 100.

Anixter No.	Vendor No.	Description
003248	28-09610	Pole-mounted support clamps

### Bridle Rings



For masonry applications, use lead anchors. For sheetrock applications, use plastic anchors.

### FEATURES

- Used to support and protect drop wire runs from abrasion
- Porcelain ring has 9.32 in. diagonal opening
- Shank mechanically galvanized ASTM B695
- Wood screw type

Anixter No.	Vendor No.	Description
003939	31-00810	1 5/8 in. eye size
003937	31-00812	1 1/4 in. eye size

### Figure 8 Tangent Support Clamp



For aerial and multipair distribution wire. Used in CATV and telephone aerial construction to secure Figure 8 aerial cable and multipair distribution wire to the pole where cable spans are in a straight line or around curves.

5/8 in. through bolt hole diameter.

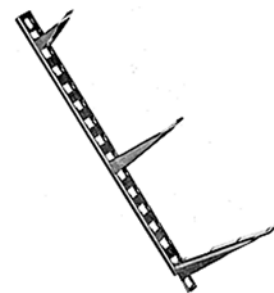
### FEATURES

- Used to secure Figure 8 cable to pole
- Clamp plate aluminum alloy
- Eliminates need to strip messenger

Anixter No.	Vendor No.	Angle of Tangent	Thru Bolt Size (in.)	Messenger Size Range (in.)	Approx. Wt. lb./10
003443	28-09500	0-15°	5/8	0.148-0.250	37.5
003446	28-19651	0-35°	5/8	0.109-0.134	22.5

### Underground Cable Racks and Hooks

#### CHANCE



Hot-dip galvanized racks with hook holes 1 1/2 in. apart. Fasten to manhole or interior walls with 1/2 in. x 4 in. expansion bolts (not included). Mounting slots 5/8 in. x 3/4 in. at top and bottom of 15 in., 24 in. and 30 in. lengths overlap for assembly in combinations for overall length desired.

Hot-dipped galvanized hooks with rounded surfaces have 3/16 in. x 3/16 in. slots for lock clips.

# Pole Line Hardware

## RACKS

Anixter No.	McGraw No.	Chance No.	No. of Support Holes	OA Length (in.)	Mt. Hole Spcg. (in.)
003176	DU17B2	C203-1124	8	15	13 1/3
003177	DU17B3	C203-1125	14	24	22
003178	DU17B4	C203-1126	18	30	28 1/2

## HOOKS

Anixter No.	McGraw No.	Chance No.	Length (in.)	Load Rating lb.
020829	DU4S1	C203-1131	4	600
009848	DU4S2	C203-1132	7 1/2	400
020616	DU4S3	C203-1133	10	300
023853	DU4S5	C203-0316	18	200

## Locking Clip

### CHANCE

For use with underground cable racks.

Anixter No.	Vendor No.	Description
264498	L1100	Locking clip

## Tension Splice and Deadend

### MACLEAN POWER SYSTEMS

For wire messenger.

Anixter No.	Vendor No.	Description
009904	5056	For wire size 0.062 to 0.100 in.
003302	5058	For wire size 0.102 to 0.114 in.
006571	5062	For wire size 0.120 to 0.135 in.

## Station Ground Strap

### MACLEAN POWER SYSTEMS

Used to connect ground or bonding wires to galvanized or copper pipe or conduit. For use in telephone, communications, CATV or alarm system applications. Clamps consist of copper strips with brass nuts, screws and washers. UL Listed. Pipe size 0.087 in. to 1.6 in. O.D., ground wire 14 AWG, L.O.A. 6 in. Standard package, 100.

Anixter No.	Vendor No.	Description
006345	1	Station ground strap

## Pole Steps

### CHANCE



Anixter No.	McGraw No.	Chance No.	Size (in.)	Approx. Wt. lb./100
447618	DG2S3	506125	5/8 x 10	98

## Detachable Pole Steps



Anixter No.	McGraw No.	Vendor No.	Description	Approx. Wt. lb./100
002969	DG8S1	6235	Pole plate, lag screw	62
002970	DG7S1	PS6236	Step	61

## Cable Guards



Hot-dip galvanized cable guards are designed to protect power and telephone cable at riser installations. Provide maximum protection for cable against collisions and vandalism. Two cable guard straps are to be used with each cable guard.

Anixter No.	McGraw No.	Vendor No.	Gauge	Length (ft.)	Depth (in.)	Width (in.)	Req. Mount Strap
003006	DU7P4	653112	14	8	1 1/8	1 1/8	J995
003007	DU7P6	6533	14	8	2 3/16	2 3/16	J996

## Cable Guard Mounting Straps

### CHANCE



Hot-dip galvanized, shaped to fit the guards. Straps are used with these cable guards. Order separately.

Anixter No.	Vendor No.	McGraw No.	Description
003015	6538	DU8P2	1 1/8 in. x 3/4 in. steel size - 9/32 in. hole size, approx. ship weight 12.8 lb./100 pcs
003016	6539	DU8P3	1/18 in. x 3/4 in. steel size - 9/32 in. hole size, approx. ship weight 24.3 lb./100 pcs
003017	6540	DU8P4	3/16 in. x 1 in. steel size - 11/32 in. hole size, approx. ship weight 63.5 lb./100 pcs

## Outside Plant and Building Entrance

# Pole Line Hardware

### Poly/PVC Guy Guards

CHANCE

Bare 3/16 in. to 1/2 in. strand. The tubular body of this guy guard is made of polyethylene or PVC, which provides improved weathering and low-temperature characteristics.

The bottom of this guy marker has a strap which makes it difficult for vandals to pull or twist off once the snap is pushed into the strap.

Anixter No.	Vendor No.	Length (ft.)	Color Code
002867	96FRPMYEL	8	Yellow

### Service Mast Bracket

Attaches to 1 1/4 in. through 3 in. diameter service masts. Front strap is rounded to prevent damage to bail of the service clamp. Square hole at end of the front slot captures the carriage bolt head during installation and prevents slippage after installation. Hot-dip galvanized.

Anixter No.	Joslyn No.	McGraw No.	Chance No.	Std. Pkg.
003235	J0590	DC 12M1	C206-0169	50

### Serving Sleeves

CHANCE



For holding down loose end of guy strand that projects beyond the guy clamp. Flared end speeds application. Hot-dip galvanized.

Anixter No.	Chance No.	Strand Size (in.)	OA Length (in.)
002811	6454	3/8	1 3/4

### Wall Straps



These wall straps are used for guying and dead-ending messenger strand to building walls.

#### CORNER TERMINATION

Anixter No.	Vendor	Vendor No.	OA Length (in.)
101439	Chance	400302402	24 3/8
003524	Chance	DC168B1	16 7/8

#### RIGHT ANGLE TERMINATION

Anixter No.	Vendor	Vendor No.	OA Length (in.)
044342	Chance	DC13E1	10 5/8

### Plastic Cable Spacers

To be used in lashed cable construction, providing a separation between cable and strand - lower concave surface bears against the cable, upper concave surface bears against underside of strand. These cable spacers are of the kinsel type.

Anixter No.	Vendor No.	Size (in.)	Std. Pkg.	Ship Ctn.
003485	P-12	1/2	50	500
003489	P-10	1	25	250

### Drive Hooks (J-hooks)



Hot-dip galvanized.

Anixter No.	Vendor No.	Clamp Lgth. (in.)	Std. Pkg.
003888	C2050190	7/16 x 4 3/4	500

### Aerial Support Ties - Weather-resistant Polypropylene

PANDUIT



#### FEATURES

- Designed to attach coax or telephone cable to the 1/4 in. or 5/16 in. support strand to form the expansion loop and keep equipment and cables clear of pole hardware
- One-piece construction with integral 1/2 in. spacer reduces inventory costs of separate spacer and bands, and installs faster to lower installed cost
- Releasable and reusable
- Minimum loop tensile strength: 75 lb., width: 0.448 in., 100 pcs

Anixter No.	Vendor No.	Length (in.)	Max. Bundle Dia. (in.)
105090	AST10-5-C100	5.6	1.00
105087	AST15-5-C100	6.9	1.50
105086	AST25-5-C100	10.0	2.50