

Model Comparison



Model	Resolution	Minimum Illumination	Max Frame Rate @ Full Resolution	H.264/MJPEG	True Day/Night	P-Iris Compatible	STELLAR™	True WDR	Binning Mode	Casino Mode™
AV1215PM-S	1.2MP	1280 x 1024 Color: 0.02 Lux B/W: 0.002 Lux, IR Sensitive	37fps	*	*	*	*			
AV2215PM-S	1080p	1920 x 1080 Color: 0.1 Lux B/W: 0.02 Lux, IR Sensitive	30fps	*	*	*				*
AV2216PM-S	1080p	1920 x 1080 Color: 0.3 Lux B/W: 0.02 Lux, IR Sensitive	30fps	*	*	*		*		
AV3215PM-S	3MP	2048 x 1536 Color: 0.1 Lux B/W: 0.02 Lux, IR Sensitive	21fps	*	*	*		*	*	
AV3216PM-S	3MP	2048 x 1536 Color: 0.3 Lux B/W: 0.02 Lux, IR Sensitive	21fps	*	*	*		*	*	
AV5215PM-S	5MP	2592 x 1944 Color: 0.3 Lux B/W: 0.02 Lux, IR Sensitive	14fps	*	*	*		*	*	
AV10215PM-S	10MP	3848 x 2752 Color: 0.42 Lux B/W: 0.03 Lux, IR Sensitive	7fps	*	*	*		*	*	

MegaVideo® G5 IP Megapixel Cameras

1.2–10MP H.264 True Day/Night Indoor Box-Style Compact IP Cameras with WDR (Wide Dynamic Range) and STELLAR™ (Spatio Temporal Low Light Architecture) Models



Configuration

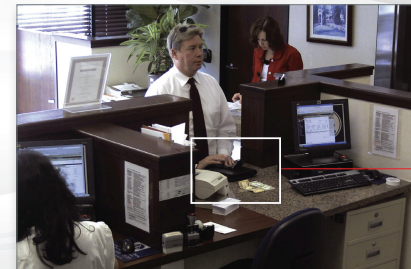
Housings (Sold Separately)



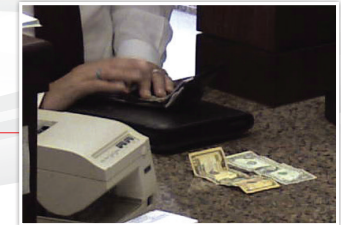
Lens Options (Sold Separately)

Motorized P-Iris	Manual Vari-Focal	Manual Fixed Focal
MPL2.8-8.5MPI <sup>1</sup> (2.8–8.5mm)	MPL4-10 (4.5–10mm)	MPL1.55 (1.55mm)
MPL3.3-8.5MPI <sup>1</sup> (3.3–8.5mm)	MPL4-12 (4.5–12mm)	MPL3.5 <sup>1</sup> (3.5mm)
MPL4-10 (4.5–10mm)	MPL8-16 (8–16mm)	MPL4.0 (4mm)
MPL4-12 (4.5–12mm)	MPL12-40 (12–40mm)	MPL6.0 (6mm)
MPL8-16 (8–16mm)	MPL33-12A <sup>1</sup> (3.3–10.5mm)	MPL6.2 <sup>1</sup> (6.2mm)
MPL12-40 (12–40mm)	UHD45-10 (4.5–10mm)	MPL8.0 (7.8mm)
MPL33-12A <sup>1</sup> (3.3–10.5mm)		UHD7.2 (7.2mm)
UHD45-10 (4.5–10mm)		JHF25M-5MP (25mm)
		JHF35M-5MP (35mm)

<sup>1</sup> Recommended for WDR models



Wide Field of View



Zoom-In Detail

More Resolution and More Choices – MegaVideo® G5

The MegaVideo® G5 multi-megapixel, indoor compact camera series delivers 1.2-, 1080p, 3-, 5-, or 10-megapixel resolutions (lens sold separately). Regardless of time-of-day, this camera is ideal for applications with challenging lighting conditions. The series combines a day/night mechanical IR cut filter with an optional P-iris lens for precise, optimal image quality.

For applications with poor lighting conditions due to strong backlighting, reflections from wet flooring/puddles, or contrast due to fog, mist, or glare, optional wide dynamic range is available on some 1080p and 3MP models. Some 1080p models provide 30 images-per-second for optimum performance in fast action scenes such as casino and banking applications. For challenging low-light applications, the 1.2MP STELLAR™ model offers best-in-class light

sensitivity capturing details in extreme low-light (0.02 lux in monochrome) at an incredibly high frame rate of 37 frames per second.

The SD card slot supports up to 32GB of storage capacity for convenient onboard storage. Motorized remote focus/zoom lenses makes set-up and maintenance easy. The camera's power can be supplied via a Power-over-Ethernet compliant network cable connection or with power from a 12–48V DC/24V AC power supply. The camera's interface allows for an intuitive, fast, and easy configuration. The MegaVideo® G5 is ONVIF Profile S (Open Network Video Interface Forum) and PSIA (Physical Security Interoperability Alliance) compliant, providing interoperability between network video products regardless of manufacturer.



Global Sales and Support

Arecont Vision is the leading manufacturer of high-performance megapixel IP cameras and associated software.

Americas

Los Angeles, CA, USA  
Arecont Vision, LLC. Headquarters  
425 E. Colorado St., 7th Floor  
Glendale, CA 91205, USA

Phone: +1.818.937.0700  
Toll Free: 877.CAMERA.8  
Fax: +1.818.937.0464

Sales

Phone: +1.818.937.0700 x 3  
Email: avsales@arecontvision.com

Support

Phone: +1.818.937.0700 x 1  
Email: support@arecontvision.com

Latin America

Email: latam.sales@arecontvision.com

EMEA

Düsseldorf, Germany  
Phone: +49.69.6953.4600  
Email: europe.sales@arecontvision.com

Moscow, Russia  
CJSC Arecont Vision  
Phone: +7.495.649.0577  
Fax: +7.495.221.5227  
Email: info@arecontvision.ru

Middle East

Email: me.ia.sales@arecontvision.com

Africa

Email: africa.sales@arecontvision.com

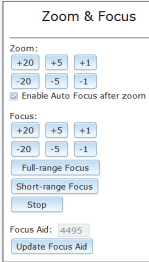
APAC

China  
Phone: +86.180.0179.1799  
Alt. Phone: +1.818.937.0700 x 3  
Fax: +1.818.649.3404  
Email: apac.sales@arecontvision.com



## MegaVideo® G5 IP Megapixel Cameras

### Remote Focus/Zoom<sup>1</sup>, with User-Friendly Web Interface



The MegaVideo® G5 features a P-iris motorized lens to adjust the zoom and easily focus the camera's sensor through the Web interface. Once mounted, the operator can quickly focus and position the camera remotely, eliminating the need to adjust the camera locally. The simplicity of just clicking "short range focus" or "full range focus" saves installers time and end users money—an easy return on investment.

### P-Iris<sup>1</sup> Control for Image Clarity

MegaVideo® G5 IP megapixel cameras feature a precision iris or "P-iris" lens to ensure the best possible depth of field and image clarity for precise performance from the sensor. Short or full range focus scans analyze the local or full scene for an optimal focus position. The P-iris lens provides an automatic, precise iris control for applications with varying lighting conditions.

<sup>1</sup> Must use motorized P-iris lens for functionality



3 megapixel MegaVideo® mounted at store entrance

### See Every Detail with Forensic Zooming

Arecont Vision megapixel cameras deliver outstanding resolution to capture every detail whether viewing live or recorded/archived video. With the ability to digitally Pan-Tilt-Zoom (PTZ) images, you can forensically zoom for license plate, face, and object details.

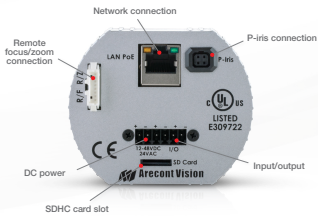
### Optimizing Data Management

Multi-streaming enables the MegaVideo® G5 to deliver eight non-identical streams to facilitate bandwidth-efficient viewing and recording options as well as integration with third-party video management systems. While using efficient H.264 video compression to manage bandwidth and keep storage requirements low, the cameras deliver exceptional image quality with ultra high resolution.



MegaVideo® G5 with Remote Focus/Zoom P-Iris Lens

### Back Panel Connections



### Features and Benefits

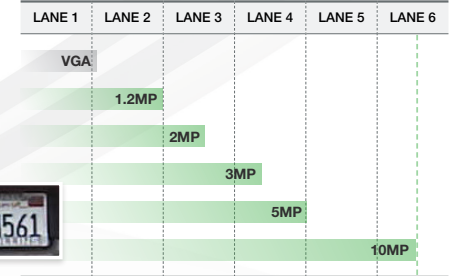
Features	Benefits
Ultra High Resolution 1.2-10MP Models	Covers a large area for identifying objects at a great distance. Offers the level of detail perfect for a detailed and effective retrospective analysis.
True Day/Night	Delivers color images during the day and automatically switches to monochrome mode when the illumination level drops.
CorridorView™	Allows the camera's image to be rotated 90 degrees to reduce capturing unnecessary data. This works great for narrow hallways where pixels are often wasted due to capturing the surrounding walls.
Privacy Masking	Protects areas for maintaining sensitive information.
Multi-Streaming	Provides eight non-identical streams for efficient viewing, recording, and integrating third-party video management systems.
ONVIF and PSIA conformance	Seamless integration with third-party products.
Motorized Remote Focus/Zoom*	Makes installation easier so the installer can accurately focus the camera remotely.
P-iris Control*	Optimizes the image for the best video clarity under different lighting conditions.
STELLAR™ Technology	STELLAR™ Low Light Technology reduces motion blur, noise and storage requirements. The technology enhances contrast and produces color imaging in near complete darkness on 1.2MP models.
True Wide Dynamic Range*	Captures all the important details in a scene with both bright and dark areas.
Dual Mode*	For added flexibility and efficiency, 10MP models have the ability to switch between 1080p and 10MP modes.
Pixel Binning*	Provides strong low light performance.
Non-integer Scaling*	Provides the ability to scale images to different resolutions down to 128x96. This flexibility allows users to tailor their system for their specific need, reducing system bandwidth and storage costs.
Casino Mode*	Guarantees continuous 30fps frame rate required by gaming industry regulations on 1080p models.
MicroSD card slot for edge recording	Provides an easy back-up or stand-alone solution for data storage.

\* Some models

### Covering Wider Areas with Fewer Cameras



5 megapixel MegaVideo® in a pole-mounted HSG2 housing



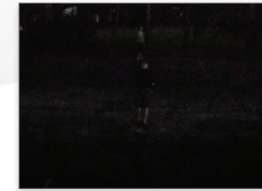
With a diameter of only 3 inches (7.62 cm), the MegaVideo® G5 camera is about 70% smaller than traditional box-style cameras. These compact dimensions make this camera ideal for discrete indoor surveillance applications. For added versatility, the MegaVideo® G5 can be added to the Arecont Vision HSG2 bullet-style enclosure as well as D4SO and Dome4 dome enclosures for outdoor environments.

In applications where large areas need to be secured, Arecont Vision® megapixel cameras provide maximum return on investment. As an example, if a VGA camera could cover one lane of traffic, a 10MP MegaVideo® G5 camera in an HSG2 bullet-style housing could cover up to 5.5 lanes at the same resolution.

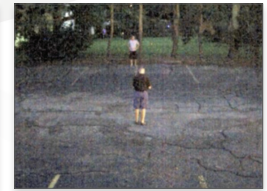
### STELLAR™ Technology with Enhanced Low Light Performance

MegaVideo® G5 features a 1.2MP model with Spatio Temporal Low Light Architecture (STELLAR™) technology, which allows for color imaging in near complete darkness. Arecont Vision® STELLAR™ technology utilizes a patented algorithm that reduces noise, motion blur, bit rate and storage requirements. Along with adaptive contrast enhancement, MegaVideo® G5 with STELLAR™ has superior low light sensitivity, making it capable of covering areas where very little light is present.

In addition to STELLAR™ models, all MegaVideo® G5 camera models are equipped with True Day/Night operation, and MegaVideo® G5 cameras that are 3MP or higher include pixel binning to reduce noise.

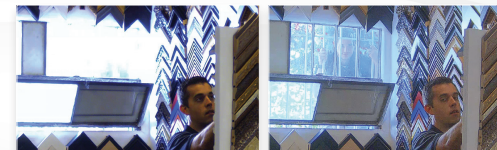


Color image without STELLAR™ at 0.02 Lux



Color image with STELLAR™ at 0.02 Lux

### MegaDynamic® Wide Dynamic Range (WDR)



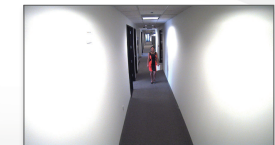
Megapixel image without WDR

Megapixel image with WDR

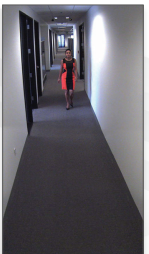
Users can achieve clear images in extreme lighting conditions with MegaVideo® G5 WDR cameras in resolutions of 1080p and 3MP. Wide Dynamic Range up to 100dB at full resolution balances light and dark areas in the same scene, such as in the lobby of an office building with large windows, the loading dock at a distribution facility or many retail environments.

### CorridorView™

With CorridorView™, MegaVideo® G5 can rotate or flip pixels in 90° increments. This works great for narrow hallways where pixels are often wasted capturing the surrounding walls.



Standard view



CorridorView™