

## Dual Feed Intelligent PDU

Single Phase - 230V / 208V / 110V

- >> Two PDUs by One Meter & Chassis
- >> 2.8" Color LCD Meter w/ Touchscreen
- >> Facilitate Rack Cabling
- >> Simplify Dual PDU Setup
- >> Save Your Rack Space
- >> Reduce IP Address Cost
- >> Increase Management Efficiency

**W PDU - Circuit Monitoring**

**Wi PDU - Outlet & Circuit Monitoring**

**WS PDU - Outlet Switching + Circuit Monitoring**

**WSi PDU - Outlet Switching + Outlet & Circuit Monitoring**

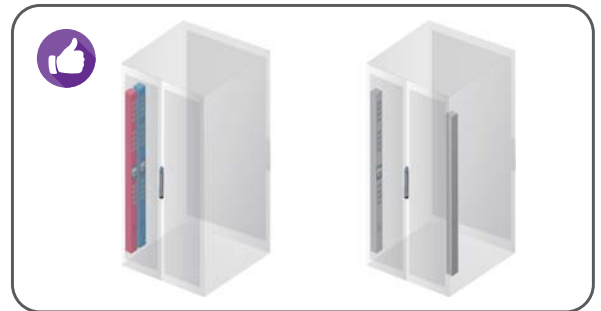


### Why Dual Feed PDU ?

#### >>> 1 Chassis 2 PDUs

Traditionally, data center racks are equipped with two PDUs positioned in the rear left and right side respectively.

InfraPower W series Dual Feed PDU is designed to house two PDUs in a single chassis which only requires one side installation. Hence, this facilitates PDU setup and saves spacing. Users also benefit from the Red + Blue colored layout to distinguish the primary & secondary PDUs.



#### >>> 1 Meter 2 PDUs

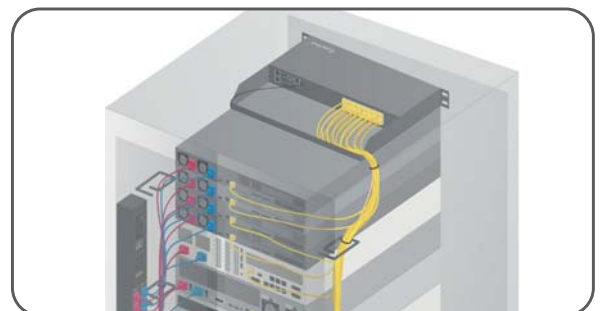
Creatively, Austin Hughes develops **1 Meter 2 PDUs** solution - InfraPower W series Dual Feed PDU. The sophisticated LCD touchscreen meter is integrated in a single chassis but for both primary and secondary PDUs. The meter not only allows local monitoring for 2 PDUs, but also supports up to 16 cascade levels. By the patent IP dongle, only one IP is required to access up to 32 PDUs in a single cascade group.



#### >>> Facilitate Cable Management

It becomes one of the cable management standard to separate power and data cables inside a rack. On the one hand, it minimizes the erratic data transfer as well as EMI. On the other hand, it distinguishes the power & data cabling.

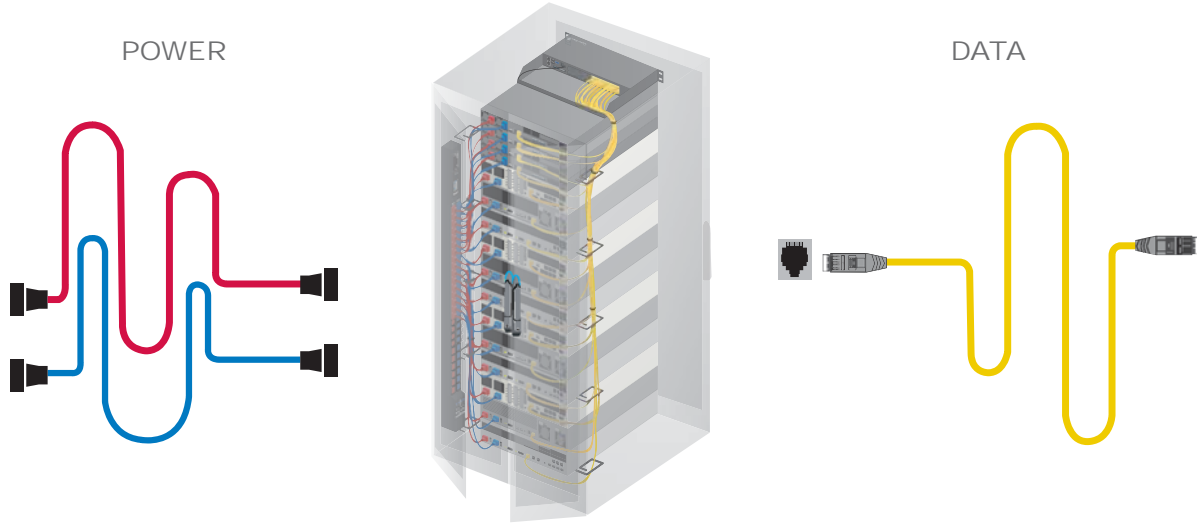
By InfraPower Dual Feed PDU, power & data cable separation is easily achieved. In addition, space-saving design and Red + Blue distinguishable layout contribute to a well-organized rack cabling.





## One Side Orientation for Power Cabling

Power and data cables should be kept apart in order to avoid interference. It is a typical practice to isolate power cabling to one side of the rack, whether it is for primary or secondary power connection. InfraPower Dual Feed PDU series offers an efficient, convenient & space saving solution - Primary & Secondary PDUs are integrated to one unit with dual power feed.



## Model Coverage

1-Phase Intelligent Dual Feed PDU Series	Monitored		Switched	
	W	Wi	WS	WSi
Outlet AMP - kWh Measurement		✓		✓
Outlet Switch ON / OFF			✓	✓
Hot-Swap Meter	✓	✓	✓	✓
2.8" Color LCD ( w/ Touchscreen )	✓	✓	✓	✓
Circuit Amp - kWh Measurement	✓	✓	✓	✓
Temp-Humid Sensor port x 2	✓	✓	✓	✓
16 Dual Feed PDU Levels in Single Daisy Chain	✓	✓	✓	✓
One IP Access up to 16 PDU Levels	✓	✓	✓	✓
SNMP Capability v2 / v3	✓	✓	✓	✓
Free Management Software	✓	✓	✓	✓
Local Meter	✓	✓	✓	✓
Tool-less Mounting for Vertical PDU	✓	✓	✓	✓
0U Form Factors	✓	✓	✓	✓
Resettable Fuse or Optional Hydraulic MCB	✓	✓	✓	✓
Voltage 230V / 208V / 110V	✓	✓	✓	✓
Operating Temperature Range -5°C to 60°C	✓	✓	✓	✓
Outlet Types : IEC C13	✓	✓	✓	✓
IEC C13 + C19	✓	✓	✓	✓
NEMA	✓	✓	✓	✓

\* Customization available on request

### Colored Power Cords



- C13 - C14 6ft ( 1.0 mm<sup>2</sup> )
- Blue / Red / Orange / Light Grey
- C19 - C20 6ft ( 1.5 mm<sup>2</sup> )
- Blue / Red
- C13 - C14 10ft ( 1.0 mm<sup>2</sup> )
- Blue / Red / Orange / Light Grey

### Colored IEC Outlets



- Standard color : Black
- Optional color : Red, Blue, White
- \* Optional colored outlets for W / Wi only

### IEC Secure Sleeves



- Sleeve attached to C14 power cord inlet : IPP-SS-C13 ( pack of 200 )
- Sleeve attached to C20 power cord inlet : IPP-SS-C19 ( pack of 100 )



## W Meter - Advanced & Sophisticated

W series PDUs are supplied with a W meter that allows local metering, the ports for PDU daisy chain as well as external sensor / peripheral connection.

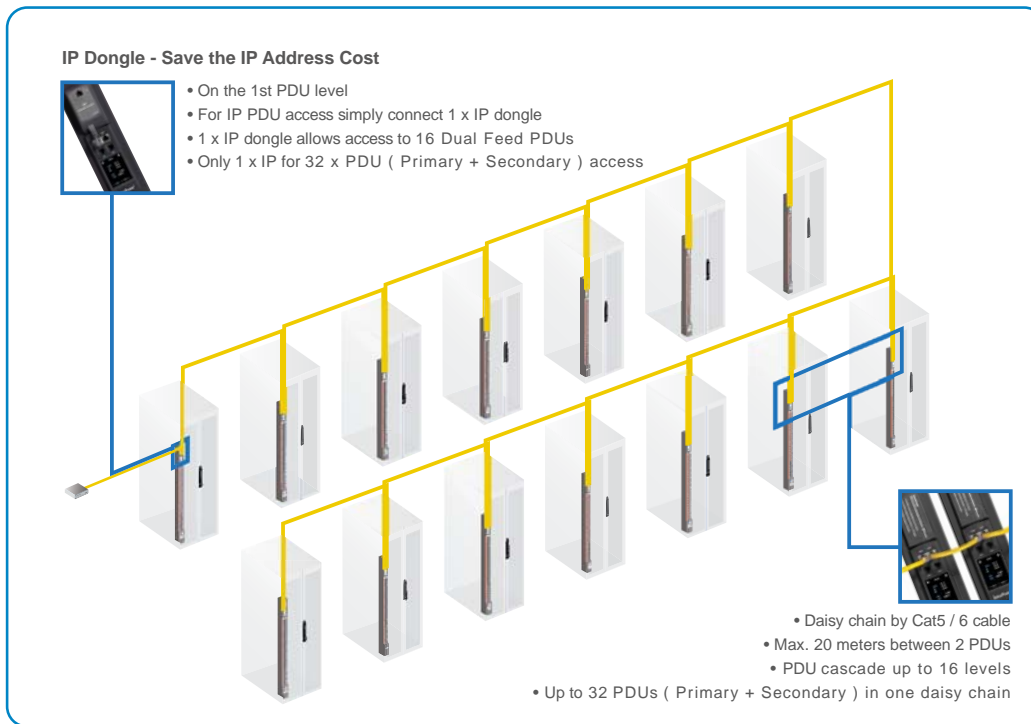
- PDUs can be cascaded in a single daisy chain.
- Simply connect 1 x IP Dongle to access up to 16 PDUs to save IP address.
- Built-in buzzer will sound when circuit or bank Amp over alarm setting.
- Field replaceable design allows meter replacement without PDU power interruption.



- ..... **Cascade port**
  - Up to 16 PDU Levels
- ..... **Sensor port x 2**
  - Temp. Sensor
  - Temp. + Humid. Sensor
  - External PDU display
- ..... **2.8" color LCD**
  - Featured w/ Touchscreen

## Ultra Density PDU Management

W Series Dual Feed PDU combines highly efficient hardware connection with software remote management for Ultra High Density PDU Remote Management.



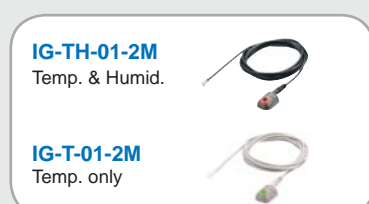
- PDU Management Software**
- Free & powerful PDU software - IPM-04
  - Max. 50 IP groups
  - Max. 800 PDUs
  - Max. 5 concurrent users
- 3rd Party DCIM ( via SNMP )**
- DCIM is achievable via IP dongle and daisy chain

### IP Dongle



- Hot pluggable for easy integration
- Allows IP remote access to the PDUs by a single network IP
- One IP dongle supports max. 16 PDUs in daisy chain
- SNMP capability v2 / v3

### Temp. & Humid. Sensor



- Plug & Play
- External with 2M or 4M cord
- Low profile design with magnetic base for easy affixing to the rack
- Pair of sensors can be connected to one single W series PDU meter

### External PDU Display



- Plug & Play
- Support two PDU displays with amp. and temp.
- Adjustable Mounting Kit for easy installation to rack door
- Bundled 3m RJ-11 cable x 2

# 1-Phase Intelligent Dual Feed PDU Series



## W PDU

### Circuit Monitoring

Outlet nos			208V - 20A / 30A 230V - 16A / 20A / 32A
C13	C19		
20	6	x 2	DV40C13 / 12C19-W
20	4	x 2	DV40C13 / 8C19-W
16	4	x 2	DV32C13 / 8C19-W
20		x 2	DV40C13-W
16		x 2	DV32C13-W
NEMA			110V - 15A / 20A / 30A
20		x 2	DV40US-W
16		x 2	DV32US-W

## Wi PDU

### Outlet & Circuit Monitoring

Outlet nos			208V - 20A / 30A 230V - 16A / 20A / 32A
C13	C19		
20	6	x 2	DV40C13 / 12C19-Wi
20	4	x 2	DV40C13 / 8C19-Wi
16	4	x 2	DV32C13 / 8C19-Wi
20		x 2	DV40C13-Wi
16		x 2	DV32C13-Wi
NEMA			110V - 15A / 20A / 30A
20		x 2	DV40US-Wi
16		x 2	DV32US-Wi

Dimension (mm) : 1650 (H) x 85 (W) x 90 (D)  
1 inch = 25.4 mm

## WS PDU

### Outlet Switching + Circuit Monitoring

Outlet nos			208V - 20A / 30A 230V - 16A / 20A / 32A
C13	C19		
20	6	x 2	DV40C13 / 12C19-WS
20	4	x 2	DV40C13 / 8C19-WS
16	4	x 2	DV32C13 / 8C19-WS
20		x 2	DV40C13-WS
16		x 2	DV32C13-WS
NEMA			110V - 15A / 20A / 30A
20		x 2	DV40US-WS
16		x 2	DV32US-WS

## WSi PDU

### Outlet Switching + Outlet & Circuit Monitoring

Outlet nos			208V - 20A / 30A 230V - 16A / 20A / 32A
C13	C19		
20	6	x 2	DV40C13 / 12C19-WSi
20	4	x 2	DV40C13 / 8C19-WSi
16	4	x 2	DV32C13 / 8C19-WSi
20		x 2	DV40C13-WSi
16		x 2	DV32C13-WSi
NEMA			110V - 15A / 20A / 30A
20		x 2	DV40US-WSi
16		x 2	DV32US-WSi

Available for : - Custom PDU  
- Colored IEC Outlet  
- Lockable or Individually Fused IEC Outlet PDU  
- UK / Schuko / French

## 230V PDU

Inlet	Amp	Cordset	
		area	length
60309	32A	4 mm <sup>2</sup>	3 M
Open end	20A	2.5 mm <sup>2</sup>	3 M
C20	16A	1.5 mm <sup>2</sup>	3 M
BS1363	13A	1.5 mm <sup>2</sup>	3 M

Outlet	C13	C19

## 208V PDU

Inlet	Amp	Cordset	
		AWG	length
L6-30P	30A	10	10 FT
L6-20P	20A	12	10 FT

Outlet	C13	C19

## 110V PDU

Inlet	Amp	Cordset	
		AWG	length
L5-30P  5-30P	30A	10	10 FT
L5-20P  5-20P	20A	12	10 FT
5-15P	15A	14	10 FT

Outlet	NEMA

Austin Hughes has an extensive distribution network, including the Americas, EMEA, ASEAN & APAC.  
Contact your nearest sales office for details of local presentation.

Sales Inquiry  
inquiry@austin-hughes.com

Technical Support  
support@austin-hughes.com

Distributed by:

Distributor by country on application