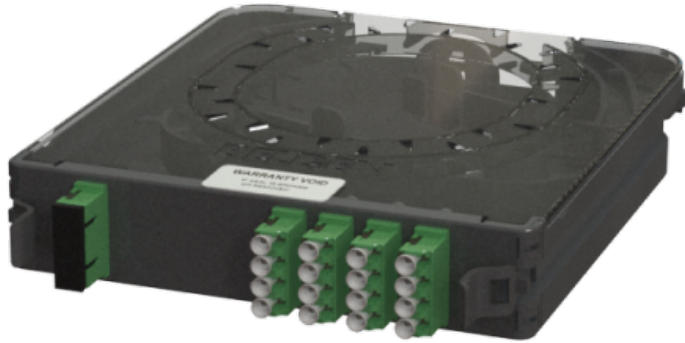


SCSX1216SLF Faceplates and Panels - FX ECX SPLITTER



For more Information
please call

1-800-Belden1

General Description:

FX ECX SPLITTER CASSETTE, OS2, 1 SPLITTER, 2 X 16, SC/APC INPUT, LC-SX/APC OUTPUT, FRONT

Usage (Overall)

Suitable Applications:	FiberExpress Solutions, Backbone, Telecommunications Room, Main Distribution Room, Passive Optical Lan
Related Parts:	FX ECX Housings (4U, 2U, 1U), ECX Splice Cassettes, Patch Cords

Physical Characteristics (Connectivity)

Capacity

Max. Capacity:	16 Fibers (Output)
-----------------------	--------------------

Access

Front Connection:	Static
Termination Area:	Front

Dimensions

Dimensions:

Height (in.)	Width (in.)	Length (in.)
1.300	6.340	8.740

Materials

Materials:

Description	Type	Material	Color
Housing	N/A	PC/ABS	Black
Cover	N/A	Polycarbonate	Clear-Light Smoke
Frame	Lead Frame	PC/ABS	Black
Adapter Output	LC-Quad w/ Internal Shutters	Plastic - UL94V-0	Green
Adapter Input	SC-Duplex/APC	Plastic - UL94V-0	Green

Weight

Weight:	0.600 lbs.
----------------	------------

Packaging

Packaging:	Individually packaged in a plastic shell, Shipped in cardboard box (12/box)
-------------------	-----------------------------------------------------------------------------

Mechanical Characteristics (Connectivity)

Storage Temperature Range:	-10°C To +60°C
-----------------------------------	----------------

SCSX1216SLF Faceplates and Panels - FX ECX SPLITTER

Operating Temperature Range: -10°C To +60°C

Applicable Specifications and Agency Compliance (Overall)

Applicable Standards & Environmental Programs

EU RoHS Compliance Date (mm/dd/yyyy): 01/01/2013

MII Order #39 (China RoHS): EUP 50

Telecommunications Standards: Telcordia GR-1209-CORE (splitters only), Telcordia GR-1221-CORE (splitters only)

Suitability

Suitability - Indoor: Yes

Transmission Characteristics (Connectivity)

Transmission Specifications:

Splitter Config.	IL (dB)	Uniformity (dB)	PDL (dB)	Directivity (dB)	RL (dB)
1 x 8	10.7	1.1	0.3	55	55
1 x 16	14.1	1.4	0.3	55	55
1 x 32	17.0	1.7	0.4	55	55
2 x 8	11.2	1.7	0.4	55	55
2 x 16	14.7	2.1	0.4	55	55
2 x 32	18.2	2.5	0.5	55	55

Notes (Overall)

Notes: Specifications do not include connector loss

Product Family

Part Numbers:

Item #	Description
SCSX1208SLF	ECX SPL CASS OS2 1S 2 X08 SC/APC LC_SX/APC FRONT
SCSX1216SLF	ECX SPL CASS OS2 1S 2 X16 SC/APC LC_SX/APC FRONT
SCSX2208SLF	ECX SPL CASS OS2 2S 2 X08 SC/APC LC_SX/APC FRONT
SCSX4208MLF	ECX SPL CASS OS2 4S 2 X08 MPO/APC LC_SX/APC FRONT
SCSX4108LLF	ECX SPL CASS OS2 4S 1 X08 LC/APC LC_SX/APC FRONT
SCSX2216LLF	ECX SPL CASS OS2 2S 2 X16 LC/APC LC_SX/APC FRONT
SCSX2116SLF	ECX SPL CASS OS2 2S 1 X16 SC/APC LC_SX/APC FRONT
SCSX1232SLF	ECX SPL CASS OS2 1S 2 X32 SC/APC LC_SX/APC FRONT
SCSX1132SLF	ECX SPL CASS OS2 1S 1 X32 SC/APC LC_SX/APC FRONT

Put Ups and Colors:

Item #	Putup	Ship Weight	Color	Notes	Item Desc
--------	-------	-------------	-------	-------	-----------

Revision Number: 0 Revision Date: 05-23-2017

© 2018 Belden, Inc.
All Rights Reserved.

Although Belden makes every reasonable effort to ensure their accuracy at the time of this publication, information and specifications described herein are subject to error or omission and to change without notice, and the listing of such information and specifications does not ensure product availability. Belden provides the information and specifications herein on an "AS IS" basis, with no representations or warranties, whether express, statutory or implied. In no event will Belden be liable for any damages (including consequential, indirect, incidental, special, punitive, or exemplary damages) whatsoever, even if Belden has been advised of the possibility of such damages, whether in an action under contract, negligence or any other theory, arising out of or in connection with the use, or inability to use, the information or specifications described herein. All sales of Belden products are subject to Belden's standard terms and conditions of sale.