



# HIRSCHMANN

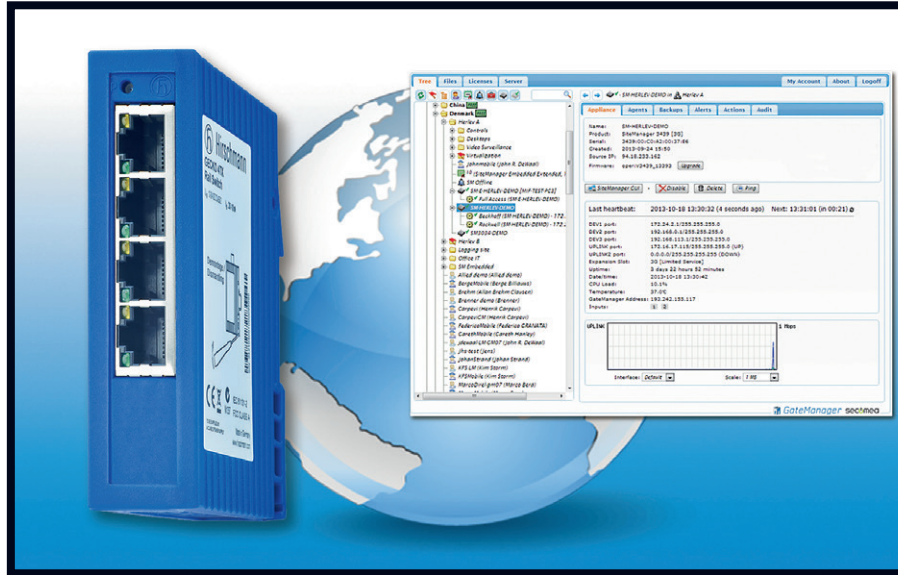
A BELDEN BRAND

## Product Bulletin

PB00019AG

### Hirschmann Secure Remote Access Solution from Belden

Combined hardware and software system that brings simplicity to remote network access, programming and diagnostics.



**Increased network efficiency and security system availability by enabling remote control and diagnostics of programmable logic controllers (PLC) or other network components with minimal IT knowledge needed.**

- **Easy to implement** – simple configuration settings allow those with limited technical knowledge to network devices together as part of the Industrial Internet of Things
- **Secure access** – state of the art security technology results in a secure system without reconfiguring the corporate firewalls
- **Shorter response times for troubleshooting** – immediate remote access and control of industrial networks to fix problems means more efficient and productive staff time and less network downtime

### Applications

The Secure Remote Access Solution's simple set-up, ease of use and secure technology make it ideal for the machine building industry, which often needs remote access to plants and machinery around the world.

The system also offers many benefits for the automotive and food and beverage industries.

### Your Benefits

The Secure Remote Access Solution provides a protected cloud system that can be configured with minimal IT knowledge or assistance. Permanent internet protocol (IP) addresses are not required, and there is no need to reconfigure corporate firewalls. Thus, the system enables secure access for remote programming and diagnostics with no disruptions to existing systems.

The Secure Remote Access Solution allows customers to remotely access their sites in order to troubleshoot and fix problems. This reduces the need for travel and allows staff to work more efficiently by handling multiple systems simultaneously.

For control engineers and original equipment manufacturer (OEM) machine builders, who need constant monitoring and control of their global systems, the Secure Remote Access Solution offers them instant access for maintenance or troubleshooting.

This product also helps companies embrace the Industrial Internet of Things movement by enabling a secure way for many devices to connect together and communicate.

At the core of the Secure Remote Access Solution is a cloud service to which customers can connect their remote network devices. Multiple versions of software and hardware are available to complete the system, including the ability to manage the network from personal computers (PCs) or mobile devices.

**A new product to serve your needs. Be certain.**



Expanding network reach without complex programming.

## Secure Remote Access Solution

The Secure Remote Access Solution supports Ethernet communication through a three-component system, including the:

- **GateManager** – operates as a cloud service; hosted by Hirschmann or hosted by your company
- **SiteManager** – makes it possible to connect remote devices to the GateManager cloud; runs on a Windows PC or Hirschmann GECKO switch hardware
- **LinkManager** – provides secure, on-demand access to remote devices via the cloud

The network system is not only designed to be easy to install, but also provides firewall-friendly, state-of-the-art security features.

Belden and Hirschmann offer an initial Starter Package, limited to one per company, which includes:

- One SiteManager license (runs on GECKO switch hardware or Windows PC)
- One LinkManager floating software license
- LinkManager mobile software license
- GateManager Free Cloud Service with Basic Administration

This new Starter Package includes everything you need to get started and test the solution. Once you are satisfied, you can upgrade your cloud service and number of licenses to reflect your corporate requirements.

### Benefits at a Glance

- Secure remote access, diagnostics and PLC programming via a flexible hardware and software solution
- Use your standard PLC and HMI tools, just as if you were onsite
- Provide instant support to ensure machine uptime
- Operate machines without physical access
- Service global customers without the expense of travel
- Connect to remote devices via a secure cloud
- No IT knowledge required to set-up system
- Permanent IP addresses are not required
- Firewall friendly – no need to reconfigure company firewalls
- Avoids the complexity of virtual private networks (VPNs)
- SiteManager software runs inside Hirschmann GECKO switches
- GateManager can be hosted by customer
- On the Secure Remote Access microsite you will find related software and documentation: [www.sra.hirschmann.com](http://www.sra.hirschmann.com)





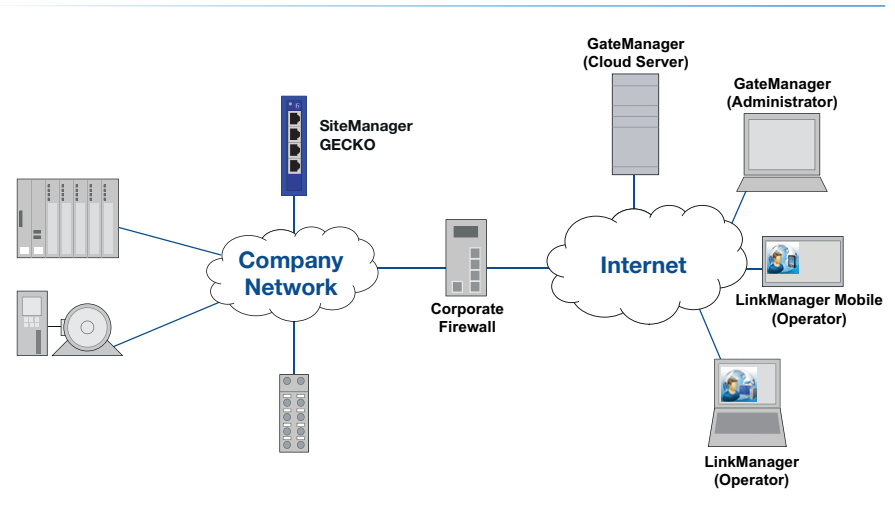
## Technical Information

**SiteManager** supports Windows XP, 7 and 8. This makes it ideal for installing on Windows based HMI panels and IPCs. It installs as a Windows Service and runs in the background. It requires only 10 Mbyte RAM and 5 Mbyte HDD. Alternatively it can be run inside a Hirschmann GECKO switch from v02.0.00 onwards.

**LinkManager** installs a virtual adapter and thus requires running on Windows. But it works fine alongside VPN clients and is designed for both 32 and 64 bit windows, and even runs inside a virtual machine such as VMWare, ESXi or HyperV.

**LinkManager Mobile** supports iPhone, iPad and Android OS.

## Hirschmann Secure Remote Access Solution



## GateManager

Product Description	Max. Number of LinkManager Licenses	Max. Number of LinkManager Mobile Licenses	Max. Number of SiteManagers
GateManager Free	2	8	100
GateManager Bronze	4	50	300
GateManager Silver	6	100	500
GateManager Gold	8	250	Unlimited
GateManager Platinum	Unlimited	Unlimited	Unlimited

## SiteManager – LinkManager – GateManager – Starter Package

Product Description	Order No.
SiteManager Basic License	942 144 - 101
SiteManager 5 Nodes License	942 144 - 102
SiteManager 10 Nodes License	942 144 - 103
LinkManager License	942 144 - 201
LinkManager Mobile License	942 144 - 202
GateManager Bronze Quarterly Fee	942 144 - 301
GateManager Silver Quarterly Fee	942 144 - 302
GateManager Gold Quarterly Fee	942 144 - 303
GateManager Platinum Quarterly Fee	942 144 - 304
GateManager Administrator Premium Upgrade	942 144 - 601
GateManager Self-hosted Server	942 144 - 501
Starter Package 5 Nodes License	942 144 - 403
Starter Package 10 Nodes License	942 144 - 404



## Technical Information

Product Description	
Type	GECKO 4TX
Description	Lite Managed Industrial ETHERNET Rail-Switch, Ethernet/Fast-Ethernet Switch, Store and Forward Switching Mode, fanless design
Port Type and Quantity	4 x 10/100BASE-TX, TP-cable, RJ45 sockets, auto-crossing, auto-negotiation, auto-polarity
Order No.	942 104-001
More Interfaces	
Power Supply/Signaling Contact	1 plug-in terminal block, 3-pin, no signaling contact
Network Size – Length of Cable	
Twisted Pair (TP)	0 to 100 m
Multimode Fiber (MM) 50/125 µm	n/a
Multimode Fiber (MM) 62.5/125 µm	n/a
Singlemode Fiber (SM) 9/125 µm	n/a
Singlemode Fiber (LH) 9/125 µm (long haul transceiver)	n/a
Network Size – Cascadability	
Line-/Star Topology	Any
Power Requirements	
Operating Voltage	DC 9.6 V to 32 V
Current Consumption at 24 V DC	120 mA
Power Consumption	2.9 W
Ambient Conditions	
Operating Temperature	0 °C to +60 °C
Storage/Transport Temperature	-40 °C to +85 °C
Relative Humidity (non-condensing)	5% to 95%
Mechanical Construction	
Mounting	DIN Rail
Protection Class	IP30
Dimensions (W x H x D)	25 x 114 x 79 mm
Weight	100 g
Approvals	
Safety of Industrial Control Equipment	cUL 61010-1 (previously cUL 508)
Reliability	
MTBF	56.6 years
Warranty	5 years (standard)
Scope of Delivery and Accessories	
Scope of Delivery	Device, terminal block, operating manual
Accessories	Rail power supply RPS 30, RPS 80 EEC or RPS 120 EEC (CC)

NOTE: These are the prominent technical specifications. For complete technical specifications visit: [www.hirschmann.com](http://www.hirschmann.com)

### Always Stay Ahead with Belden

In a highly competitive environment, it is crucial to have reliable partners who are able to add value to your business. When it comes to signal transmissions, Belden is the number one solutions provider. We understand your business and want to know your specific challenges and targets to see how effective signal transmission solutions can push you ahead of the competition. By combining the strengths of our five leading brands, Belden, GarrettCom, Hirschmann, Lumberg Automation and Tofino Security, we are able to offer the solution you need. Today it may be a single cable, a switch or a connector, thus solving a specific issue; tomorrow it can be a complex range of integrated applications, systems and solutions.

Belden, Belden Sending All The Right Signals, GarrettCom, Hirschmann, Lumberg Automation, Tofino Security, Tripwire and the Belden logo are trademarks or registered trademarks of Belden Inc. or its affiliated companies in the United States and other jurisdictions. Belden and other parties may also have trademark rights in other terms used herein.