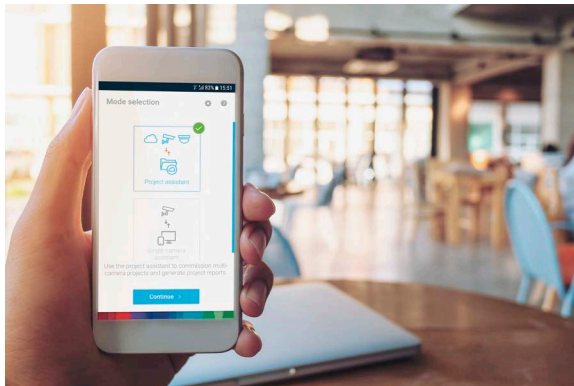


Project Assistant



BOSCH
Invented for life



- Quick and easy configuration of basic camera settings
- Simple set up for camera field of view
- Offline pre-configuration and sharing of project files for collaboration among colleagues, across sites
- Comprehensive documentation and reporting of the installation and project progress

Introduction

Project Assistant by Bosch is the market's easiest to use app for initial installation and basic configuration of IP cameras. Off-site and without connection to the camera, basic configurations can already be covered and shared with colleagues. On site, those pre-configurations can simply be pushed onto the camera, making the installation procedure easier and less time consuming. Already configured cameras can be integrated as well. The camera's field of view can be viewed and adjusted easily via the app itself. A comprehensive report of the commissioned cameras is automatically generated.

System overview

Installation

The Project Assistant app covers all basic camera settings like name, password, network settings, date and time, and the camera's field of view alignment.

Identification of camera

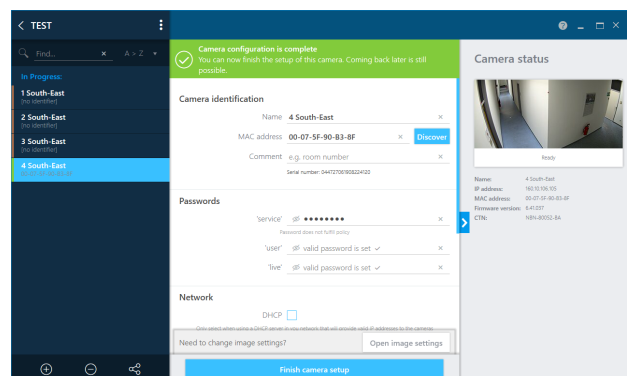
Local area network scans, direct connection via IP address, and QR-code scan for MAC-address import and automatic connection are available to identify cameras.

Single Camera Assistant

The *quick* mode offers connecting to a single camera and setting basic camera settings online without having to go through the project setup phase beforehand.

Project Assistant

The Project Assistant app allows you to cluster and preconfigure cameras in projects. Project defaults can be defined for network settings and passwords and are automatically used for added cameras. Both project defaults and dedicated camera configurations can be defined offline, and pushed onto the cameras when connecting. Project and camera settings can also be exported as well as imported to/from project and .csv files (e.g. Excel).



Sharing of projects

Project files can be exported and transferred to associates via email or cloud service, e.g. in case another project team member is taking over from someone else. The most convenient way, however, is our Dropbox *synchronization & sharing* feature, which allows multiple people to work on the same project simultaneously or to monitor real-time progress. Thus, easy collaboration and installation process monitoring is supported even for large sites.

Reporting

The Project Assistant app allows you to easily generate reports and documentation of the status of projects. The reports contain relevant project and camera settings as well as snapshots of the camera's field of view.

Technical specifications

Operating system	The app works on phones, tablets and laptops running Android 6.0 or higher with OpenGL ES 3.0 or higher, iOS11 or higher, Windows 10. 1607 ("Anniversary Update") or higher
Network connection	An internet connection is required for additional features like automatic update check and Dropbox sharing.