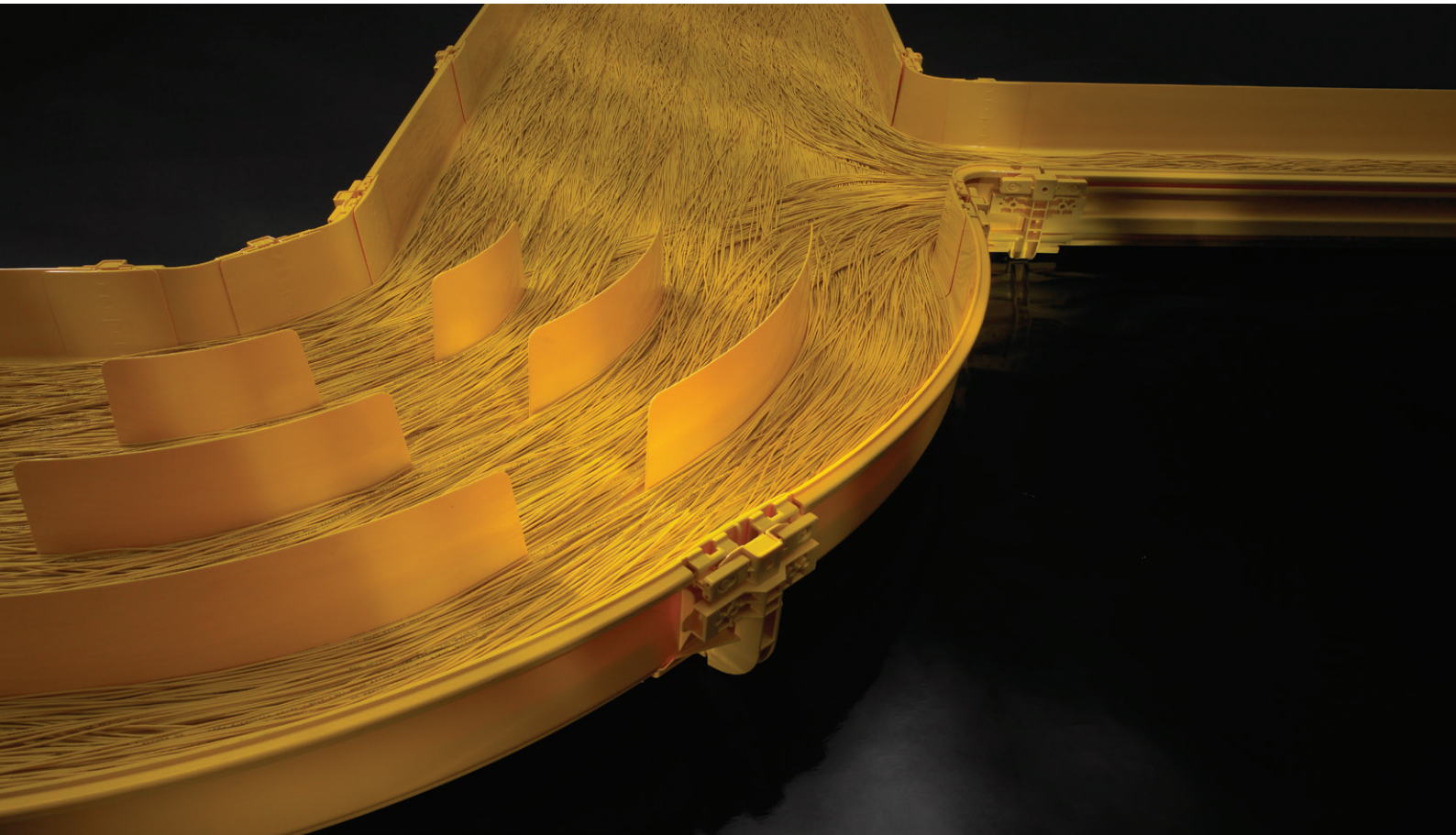


COMMScope®

# FiberGuide System

System Overview



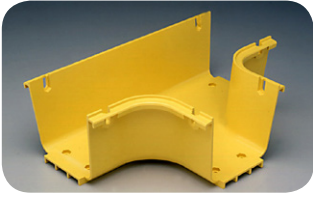


# 1. FiberGuide

<b>4x4 System</b>	<b>04</b>
<b>2x6 System</b>	<b>09</b>
<b>4x6 System</b>	<b>12</b>
<b>4x12 System</b>	<b>17</b>
<b>4x24 System</b>	<b>23</b>
<b>Express Exit™ Family</b>	<b>26</b>
<b>2x6, 4x4, 4x6 System Support Kits</b>	<b>28</b>
<b>4x12 System Support Kits</b>	<b>29</b>
<b>4x24 System Support Kits</b>	<b>30</b>

# 4x4 System

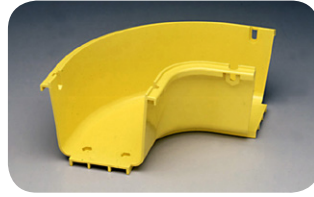
Fittings – 4" H x 4" W



Horizontal T  
(FGS-MHRT-A)



Horizontal Cross  
(FGS-MHXP-A)



90° Horizontal Elbow  
(FGS-MH9E-A)



90° Up Elbow  
Metal Cover Included  
(FGS-MU9E-A)



90° Down Elbow  
(FGS-MD9E-A)



45° Horizontal Elbow  
(FGS-MH4E-A)



45° Up Elbow  
Metal Cover Included  
(FGS-MU4E-A)



45° Down Elbow  
(FGS-MD4E-A)



4x4 to 4x6 Straight Adapter  
(FGS-MDSA-AB)



Expandable Straight Section  
(FGS-MVAR-A)



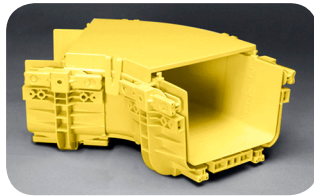
Cut-in T  
(FGS-MHIS-A)



Cut-in T Fixture  
shown on straight section  
(FGS-MHIS-JIG-A/B/F)



End Cap  
(FGS-HMEC-A)



Snap-on Plastic Cover  
(FGS-SH4E-A shown attached to 45°  
horizontal elbow with junctions)

## 4x4 System

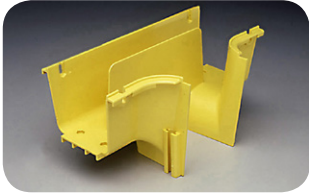
Fittings – 4" H x 4" W

### Ordering Information

Description	Number of Junctions	Catalog Number				
		Yellow System	Yellow System Snap-on Cover	Black System	Black System Snap-on Cover	Fixed Metal Cover
<b>4x4 fittings</b>						
Horizontal T	3	FGS-MHRT-A	FGS-SHRT-A	FGSB-MHRT-A	FGSB-SHRT-A	FGS-CHRT-A
Horizontal cross	4	FGS-MHXP-A	FGS-SHXP-A	FGSB-MHXP-A	FGSB-SHXP-A	FGS-CHXP-A
90° horizontal elbow	2	FGS-MH9E-A	FGS-SH9E-A	FGSB-MH9E-A	FGSB-SH9E-A	FGS-CH9E-A
90° up elbow metal cover included	2	FGS-MU9E-A	FGS-SU9E-A	FGSB-MU9E-A	FGSB-SU9E-A	–
90° down elbow	2	FGS-MD9E-A	FGS-SD9E-A	FGSB-MD9E-A	FGSB-SD9E-A	FGS-CD9E-A
45° horizontal elbow	2	FGS-MH4E-A	FGS-SH4E-A	FGSB-MH4E-A	FGSB-SH4E-A	FGS-CH4E-A
45° up elbow metal cover included	2	FGS-MU4E-A	FGS-SU4E-A	FGSB-MU4E-A	FGSB-SU4E-A	–
45° down elbow	2	FGS-MD4E-A	FGS-SD4E-A	FGSB-MD4E-A	FGSB-SD4E-A	FGS-CD4E-A
<b>4x4 conversions</b>						
4x4 to 4x6 straight adapter	(1) 4x4, (1) 4x6	FGS-MDSA-AB	FGS-SDSA-AB	FGSB-MDSA-AB	FGSB-SDSA-AB	FGS-CDSA-AB
4x4 expandable straight section	2	FGS-MVAR-A	–	FGSB-MVAR-A	–	–
4" Cut-in T assembly hardware included	–	FGS-MHIS-A	–	FGSB-MHIS-A	–	–
6" Cut-in T assembly hardware included	–	FGS-MHIS-B	–	FGSB-MHIS-B	–	–
12" Cut-in T assembly hardware included	–	FGS-MHIS-F	–	FGSB-MHIS-F	–	–
Cut-in T fixture	–	FGS-MHIS:JIG-A/B/F	–	FGS-MHIS:JIG-A/B/F	–	–
4x4 end cap	–	FGS-HMEC-A	–	FGS-HMEC-A	–	–

# 4x4 System

## Downspouts and Attachments – 4" H x 4" W



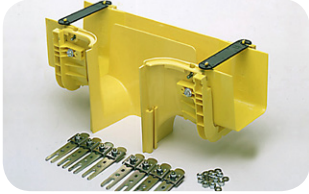
Downspout  
(FGS-MDSP-A)



Cover for 4x4 Downspout  
(FGS-MCDS-AB)



Extended Downspout  
(FGS-MDSP-EX-A  
shown with and without cover)



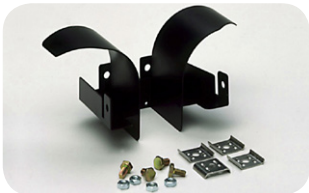
Insertable Downspout  
(FGS-MDSP-A/I)



Trumpet Flare  
(FGS-MTRM-A)



Downspout Exit  
Junction Kit  
(FGS-MJWR-A)



4x4/4x6 Downspout Insert  
(FGS-HDSI-AB)



4" Square to 2" Round Adapter  
with Flex Tube  
(FGS-ASRI  
requires FGS-MJWR-A  
Junction Kit)



Dual 2"  
Flex Tube Attachment  
(FGS-KT03-A)



Single 2"  
Flex Tube Attachment  
(FGS-KT03-A1)



2" Quad Flex  
Tube Attachment  
(FGS-KT03-A4)

## 4x4 System

### Downspouts and Attachments – 4" H x 4" W

An array of 4x4 downspout options are available to feed fiber from overhead straight sections into fiber optic equipment below.  
Ordering Information

Description	Number of Junctions	Catalog Number	
		Yellow System	Black System
<b>4x4 downspouts</b>			
Downspout	2**	FGS-MDSP-A	FGSB-MDSP-A
Cover for 4x4 downspout	–	FGS-MCDS-AB	FGSB-MCDS-AB
Extended downspout	2*	FGS-MDSP-EX-A	FGSB-MDSP-EX-A
Cover for 4x4 extended downspout	–	FGS-MCDS-EX-AB	FGSB-MCDS-EX-AB
Insertable downspout	–	FGS-MDSP-A/I	FGSB-MDSP-A/I
Trumpet flare used on both 4x4 and 4x6 downspouts; no 4" junction kit required	–	FGS-MTRM-A	FGSB-MTRM-A
Downspout exit junction kit	–	FGS-MJWR-A	FGSB-MJWR-A
4x4/4x6 downspout; insert converts bottom of downspout to 2x2" without using 2" to 4" adapter, saving vertical space	–	FGS-HDSI-AB	FGS-HDSI-AB
<b>4x4 attachments</b>			
Square to 2" round adapter with flex tube; one 4x4 junction kit (FGS-MJWR-A) required to attach to a downspout drop			
5' length	1	FGS-ASRI-5F	FGSB-ASRI-5F
10' length	1	FGS-ASRI-10F	FGSB-ASRI-10F
15' length	1	FGS-ASRI-15F	FGSB-ASRI-15F
Dual 2" flex tube attachment; no 4x4 junction kit required			
(2) 5' length	–	FGS-KT03-A	FGSB-KT03-A
(2) 10' length	–	FGS-KT03-A10F	FGSB-KT03-A10F
(2) 15' length	–	FGS-KT03-A15F	FGSB-KT03-A15F
Single 2" flex tube attachment; no 4x4 junction kit required			
5' length	–	FGS-KT03-A1	FGSB-KT03-A1
10' length	–	FGS-KT03-A1-10F	FGSB-KT03-A1-10F
15' length	–	FGS-KT03-A1-15F	FGSB-KT03-A1-15F
Quad 2" flex tube attachment; no 4x4 junction kit required			
(4) 5' length	–	FGS-KT03-A4-5F	FGSB-KT03-A4-5F
(4) 10' length	–	FGS-KT03-A4-10F	FGSB-KT03-A4-10F
(4) 15' length	–	FGS-KT03-A4-15F	FGSB-KT03-A4-15F
4x4 quad 7/8" flex tube attachment; no 4x4 junction kit required			
(4) 5' length	–	FGS-KT07-A4-5F	FGSB-KT07-A4-5F
(4) 10' length	–	FGS-KT07-A4-10F	FGSB-KT07-A4-10F
(4) 15' length	–	FGS-KT07-A4-15F	FGSB-KT07-A4-15F

\*A third junction is needed if drop is to a fitting or straight section.

\*\*This drop junction must be a junction type FGS-MJWR-A, FGSB-MJWR-A.

## 4x4 System

### Straight Section and Snap-Fit™ Junction – 4" H x 4" W

## Straight Section

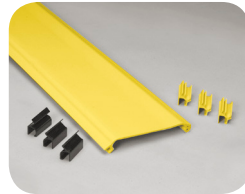
The unique four-channel design of the 4x4 FiberGuide straight section allows the standard system to be attached to the support structure without the need to cut or drill any holes within the trough. This ensures that the patch cords will not come in contact with any screw heads or bolts, an important consideration in 4x4 systems where higher cable counts apply increased pressure on patch cords at the bottom of the trough.



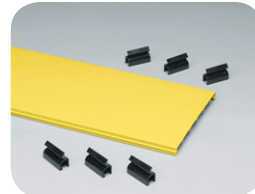
Horizontal Straight Section (FGS-MSHS-A)



Expandable Straight Section (FGS-MVAR-A)



Hinged Cover for Horizontal Straight Section (FGS-MSNC-A)



Snap-On Cover for Horizontal Straight Section (FGS-MSSC-A)

## Ordering Information

Description	Catalog Number	
	Yellow System	Black System
<b>4x4 straight section</b>		
Horizontal straight section; 6' long, cover sold separately	FGS-MSHS-A	FGSB-MSHS-A
Expandable straight section	FGS-MVAR-A	FGSB-MVAR-A
<b>4x4 accessories</b>		
Hinged cover kit for horizontal straight section; includes three mounting hinges and three clips	FGS-MSNC-A	FGSB-MSNC-A
Snap-on cover kit for horizontal straight section; includes six capture clips with mounting clasps	FGS-MSSC-A	FGSB-MSSC-A
Kit - 10 black capture clips	FGS-DHCP	FGS-DHCP
Kit - 10 black capture clips and 10 hinges	FGS-DHHC (Yellow Hinge)	FGSB-DHHC (Black Hinge)

## Snap-Fit™ Junction

The Snap-Fit™ junction assembly is available for the 4-inch FiberGuide system. The Snap-Fit junction is a completely tool-less junction. No additional tools are required for installation or removal. The junction exhibits superior holding force and accommodates support brackets. A warning label indicating caution around fiber optic cable is included with each junction kit.



Snap-Fit Junction (FGS-MFAW-A)

## Ordering Information

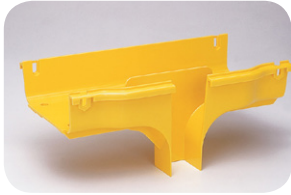
Description	Catalog Number	
	Yellow System	Black System
4x4 Snap-Fit™ junction	FGS-MFAW-A	FGSB-MFAW-A



## 2x6 System

Fittings, Downspouts and Attachments – 2" H x 6" W

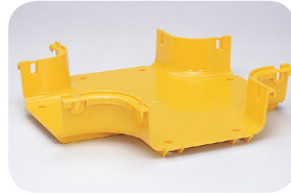
---



2x6 to 2x2 Downspout  
(FGS-MDSP-G)



Horizontal T  
(FGS-MHRT-G)



Horizontal Cross  
(FGS-MHXP-G)



90° Horizontal Elbow  
(FGS-MH9E-G)



90° Down Elbow  
(FGS-MD9E-G)



45° Horizontal Elbow  
(FGS-MH4E-G)



45° Up Elbow  
(FGS-MU4E-G)  
(Metal Cover Included)



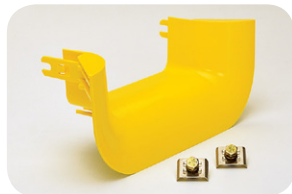
45° Down Elbow  
(FGS-MD4E-G)



2x6 to 4x4 Adapter  
(FGS-MDSA-GA)



2x6 to 4x6 Adapter  
(FGS-MDSA-GB)



Trumpet Flare  
(FGS-MTRM-G)

## 2x6 System

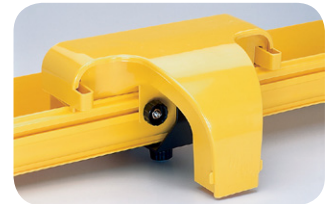
Fittings, Downspouts and Attachments – 2" H x 6" W

### Ordering Information

Description	Number of Junctions	Catalog Number	
		Yellow System	Black System
<b>2x6 fittings</b>			
Horizontal T	3	FGS-MHRT-G	FGSB-MHRT-G
Horizontal cross	4	FGS-MHXP-G	FGSB-MHXP-G
90° horizontal elbow	2	FGS-MH9E-G	FGSB-MH9E-G
90° down elbow	2	FGS-MD9E-G	FGSB-MD9E-G
45° horizontal elbow	2	FGS-MH4E-G	FGSB-MH4E-G
45° up elbow, metal cover included	2	FGS-MU4E-G	FGSB-MU4E-G
45° down elbow	2	FGS-MD4E-G	FGSB-MD4E-G
<b>2x6 conversions</b>			
2x6 to 4x4 adapter	(1) 2x6, (1) 4x4	FGS-MDSA-GA	FGSB-MDSA-GA
2x6 to 4x6 adapter	(1) 2x6, (1) 4x6	FGS-MDSA-GB	FGSB-MDSA-GB
Trumpet flare	–	FGS-MTRM-G	FGSB-MTRM-G
<b>2x6 downspouts</b>			
2x6 to 2x2 downspout	2	FGS-MDSP-G	FGSB-MDSP-G
<b>2x6 attachments</b>			
Dual 2" flex tube attachment	–	FGS-KT03-G-5F	FGSB-KT03-G-5F
2x6 end cap	–	FGS-HMEC-G	FGSB-HMEC-G

## Low-Profile Express Exit™

Designed for low-ceiling or height restricted environments, the Express Exit™ for the 2x6 FiberGuide system extends only two inches above the straight section sidewall. The Express Exit accommodates up to 150 (3 mm) patch cords, includes removable rear cable guides for additional cable management, and features a 2x2 exit opening. It is designed specifically for the 2x6 FiberGuide system and should not be used on any other FiberGuide system.



Express Exit  
(FGS-MEXP-LP-G)

### Ordering Information

Description	Catalog Number	
	Yellow System	Black System
Low-Profile Express Exit™ (designed exclusively for the 2x6 system) Base, cover, mounting hardware, and support bracket included	FGS-MEXP-LP-G	FGSB-MEXP-LP-G

## 2x6 System

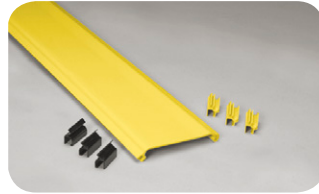
Straight Section and Junction – 2" H x 6" W

### Straight Section

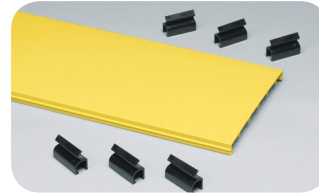
The unique four-channel design of the 2x6 FiberGuide straight section allows the standard system to be attached to the support structure without the need to cut or drill any holes within the trough. This ensures that the patch cords will not come in contact with any screw heads or bolts.



Straight Section  
(FGS-MSHS-G)



Hinged Cover Kit for Horizontal  
Straight Section  
(FGS-MSNC-B/G)



6-inch Snap-on Cover  
(FGS-MSSC-B/G)

### Ordering Information

Description	Catalog Number	
	Yellow System	Black System
2x6 straight section; horizontal straight section; 6' long, cover sold separately	FGS-MSHS-G	FGSB-MSHS-G
<b>2x6 accessories</b>		
2x6 hinged cover kit for horizontal straight section; three mounting hinges and three clips included	FGS-MSNC-B/G	FGSB-MSNC-B/G
6-inch snap-on cover kit for horizontal straight section; six capture clips with mounting clasps included	FGS-MSSC-B/G	FGSB-MSSC-B/G
Kit-10 black capture clips	FGS-DHCP	FGS-DHCP

### Junction

The one-piece junction employs factory-installed set screws to assure strength and durability. No cutting or drilling of the components is required for assembly. A warning label indicating caution around fiber optic cable is included with each junction kit.



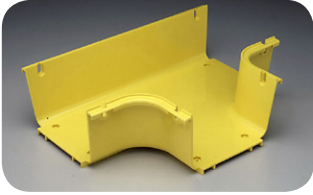
2x6 Junction  
(FGS-JUNC-G)

### Ordering Information

Description	Catalog Number	
	Yellow System	Black System
2x6 junction	FGS-JUNC-G	FGSB-JUNC-G

# 4x6 System

Fittings – 4" H x 6" W



Horizontal T  
(FGS-MHRT-B)



Horizontal Cross  
(FGS-MHXP-B)



90° Horizontal Elbow  
(FGS-MH9E-B)



90° Up Elbow  
Cover Included  
(FGS-MU9E-B)



90° Down Elbow  
(FGS-MD9E-B)



45° Horizontal Elbow  
(FGS-MH4E-B)



45° Up Elbow  
Cover Included  
(FGS-MU4E-B)



45° Down Elbow  
(FGS-MD4E-B)



4x4 to 4x6 Straight Adapter  
(FGS-MDSA-AB)



Expandable  
Straight Section  
(FGS-MVAR-B)



6" Cut-in T  
(FGS-MHIS-B)



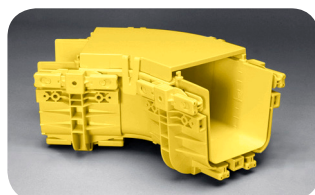
Cut-in T Fixture  
(FGS-MHIS-JIG-A/B/F shown on  
a straight section)



4x12 to Single 4x6 Adapter  
(FGS-MDSA-FB)  
(Cover: FGS-SDSA-FB)



End Cap  
(FGS-HMEC-B)



Snap-on Plastic Cover  
(FGS-SH4E-B shown attached  
to 45° horizontal elbow with  
junctions)

# 4x6 System

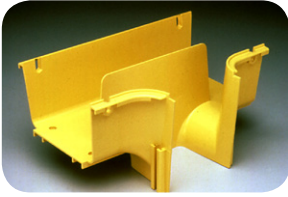
Fittings – 4" H x 6" W

## Ordering Information

Description	Number of Junctions	Catalog Number				
		Yellow System	Yellow System Snap-on Cover	Black System	Black System Snap-on Cover	Fixed Metal Cover
<b>4x6 fittings</b>						
Horizontal T	3	FGS-MHRT-B	FGS-SHRT-B	FGSB-MHRT-B	FGSB-SHRT-B	FGS-CHRT-B
Horizontal cross	4	FGS-MHXP-B	FGS-SHXP-B	FGSB-MHXP-B	FGSB-SHXP-B	FGS-CHXP-B
90° horizontal elbow	2	FGS-MH9E-B	FGS-SH9E-B	FGSB-MH9E-B	FGSB-SH9E-B	FGS-CH9E-B
90° up elbow metal cover included	2	FGS-MU9E-B	–	FGSB-MU9E-B	–	FGS-CU9E-B
90° down elbow	2	FGS-MD9E-B	FGS-SD9E-B	FGSB-MD9E-B	FGSB-SD9E-B	FGS-CD9E-B
45° horizontal elbow	2	FGS-MH4E-B	FGS-SH4E-B	FGSB-MH4E-B	FGSB-SH4E-B	FGS-CH4E-B
45° up elbow metal cover included	2	FGS-MU4E-B	FGS-SU4E-B	FGSB-MU4E-B	FGSB-SU4E-B	FGS-CU4E-B
45° down elbow	2	FGS-MD4E-B	FGS-SD4E-B	FGSB-MD4E-B	FGSB-SD4E-B	FGS-CD4E-B
<b>4x6 conversions</b>						
4x4 to 4x6 straight adapter	(1) 4x4, (1) 4x6	FGS-MDSA-AB	FGS-SDSA-AB	FGSB-MDSA-AB	FGSB-SDSA-AB	FGS-CDSA-AB
4x12 to single 4x6 adapter	–	FGS-MDSA-FB	FGS-SDSA-FB	FGSB-MDSA-FB	FGSB-SDSA-FB	–
4x6 expandable straight section	2	FGS-MVAR-B	–	FGSB-MVAR-B	–	–
4" Cut-in T; assembly hardware included	–	FGS-MHIS-A	–	FGSB-MHIS-A	–	–
6" Cut-in T; assembly hardware included	–	FGS-MHIS-B	–	FGSB-MHIS-B	–	–
12" Cut-in T; assembly hardware included	–	FGS-MHIS-F	–	FGSB-MHIS-F	–	–
Cut-in T fixture	–	FGS-MHISJIG-A/B/F	–	FGSB-MHISJIG-A/B/F	–	–
<b>4x6 end cap</b>	–	FGS-HMEC-B	–	FGS-HMEC-B	–	–

# 4x6 System

## Downspouts and Attachments – 4" H x 6" W



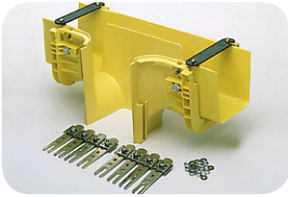
Downspout  
(FGS-MDSP-B)



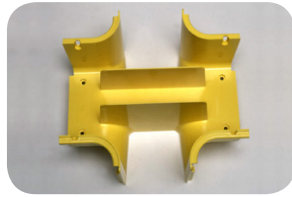
Cover for 4x6 Downspout  
(FGS-MCDS-AB)



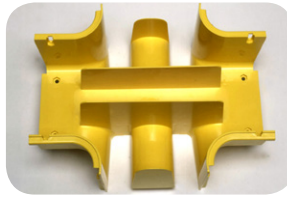
Extended Downspout  
(FGS-MDSP-EX-B shown with  
and without cover)



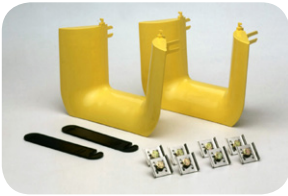
Insertable Downspout  
(FGS-MDSP-B/I)



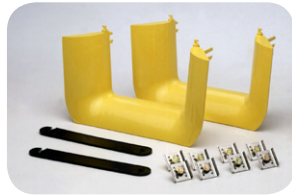
Dual Downspout  
(FGS-MDSP-2B)



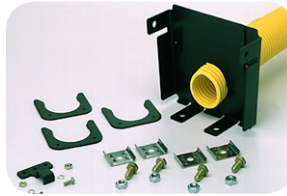
Dual Downspout with Divider  
(FGS-MDSP-2B-IMP)



Trumpet Flare Kit for 4x6  
Dual Downspout  
(FGS-MTRM-2B)



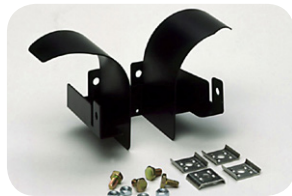
Trumpet Flare Kit for Dual  
Downspout with Divider  
(FGS-MTRM-2B-IMP)



Single 2" Flex Tube Attachment  
(FGS-KT03-A1)



Trumpet Flare Kit  
(FGS-MTRM-A shown attached  
to downspout)



4x4/4x6 Downspout Insert  
(FGS-HDSI-AB)



Downspout Exit Junction Kit  
(FGS-MJWR-A)



4" Square to 2" Round Adapter  
with Flex Tube  
(FGS-ASRI requires  
FGS-MJWVRA junction kit)



Dual 2" Flex Tube Attachment  
(FGS-KT03-A)



2" Quad Flex  
Flex Tube Attachment  
(FGS-KT03-A4)

## 4x6 System

### Downspouts and Attachments – 4" H x 6" W

4x6 downspouts and attachments feed fiber from overhead straight sections into fiber optic equipment below. All 4x6 downspouts feature 4-inch exits and attach to the 4-inch x 4-inch attachments listed below.

### Ordering Information

Description	Number of Junctions	Catalog Number	
		Yellow System	Black System
<b>4x6 downspouts</b>			
Downspout Note: If a trumpet flare is required use a 4x4 flare (FGS-MTRM-A)	2*	FGS-MDSP-B	FGSB-MDSP-B
Cover for 4x6 downspout and dual downspout	–	FGS-MCDS-AB**	FGSB-MCDS-AB**
Extended downspout	2	FGS-MDSP-EX-B	FGSB-MDSP-EX-B
Cover for 4x6 extended downspout	–	FGS-MCDS-EX-AB	FGSB-MCDS-EX-AB
Insertable downspout	–	FGS-MDSP-B/I	FGSB-MDSP-B/I
Dual drop downspout	2*	FGS-MDSP-2B	FGSB-MDSP-2B
Trumpet flare for dual drop downspout (kit of 2 FGS-MTRM-A)	–	FGS-MTRM-2B	FGSB-MTRM-2B
Dual drop downspout with divider	2	FGS-MDSP-2B-IMP	FGSB-MDSP-2B-IMP
Trumpet flare for dual drop downspout with divider (kit of 2)	–	FGS-MTRM-2B-IMP	FGSB-MTRM-2B-IMP
Junction for downspout exit	–	FGS-MJWR-A	FGSB-MJWR-A
4x4/4x6 downspout insert; converts bottom of downspout to 2x2 without using 2" to 4" adapter, saving vertical space	–	FGS-HDSI-AB	FGSB-HDSI-AB
Trumpet flare; used on both 4x4 and 4x6 downspouts — no 4" junction kit required	–	FGS-MTRM-A	FGSB-MTRM-A
<b>4x6 attachments</b>			
4x4 square to 2" round adapter with flex tube; one 4x4 junction kit (FGS-MJWR-A) required to attach to a downspout drop			
5' length	1	FGS-ASRI-5F	FGSB-ASRI-5F
10' length	1	FGS-ASRI-10F	FGSB-ASRI-10F
15' length	1	FGS-ASRI-15F	FGSB-ASRI-15F
<b>4x4 dual 2" flex tube attachment; no 4x4 junction kit required</b>			
(2) 5' length	–	FGS-KT03-A	FGSB-KT03-A
(2) 10' length	–	FGS-KT03-A-10F	FGSB-KT03-A-10F
(2) 15' length	–	FGS-KT03-A-15F	FGSB-KT03-A-15F
<b>4x4 single 2" flex tube attachment; no 4x4 junction kit required</b>			
5' length	–	FGS-KT03-A-1	FGSB-KT03-A-1
10' length	–	FGS-KT03-A-1-10F	FGSB-KT03-A-1-10F
15' length	–	FGS-KT03-A-1-15F	FGSB-KT03-A-1-15F
<b>4x4 quad 2" flex tube attachment; no 4x4 junction kit required</b>			
(4) 5' length	–	FGS-KT03-A4-5F	FGSB-KT03-A4-5F
(4) 10' length	–	FGS-KT03-A4-10F	FGSB-KT03-A4-10F
(4) 15' length	–	FGS-KT03-A4-15F	FGSB-KT03-A4-15F
<b>4x4 quad 7/8" flex tube attachment; no 4x4 junction kit required</b>			
(4) 5' length	–	FGS-KT07-A4-5F	FGSB-KT07-A4-5F
(4) 10' length	–	FGS-KT07-A4-10F	FGSB-KT07-A4-10F
(4) 15' length	–	FGS-KT07-A4-15F	FGSB-KT07-A4-15F

\*A 4x4 junction is needed to drop to a fitting or a straight section. This drop junction must be a junction type FGS-MJWR-A or FGSB-MJWR-A.

\*\*Dual downspout requires two covers.

## 4x6 System

### Straight Section and Snap-Fit™ Junction – 4" H x 6" W

## Straight Section

The unique four-channel design of the 4x6 FiberGuide straight section allows the standard system to be attached to the support structure without the need to cut or drill any holes within the trough. This ensures that the patch cords will not come in contact with any screw heads or bolts, an important consideration in 4x6 systems where higher cable counts apply increased pressure on patch cords at the bottom of the trough.



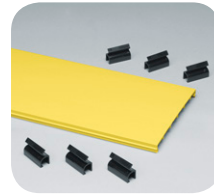
Horizontal Straight Section (FGS-x-B)



Expandable Straight Section (FGS-MVAR-B)



Hinged Cover Kit for Horizontal Straight Section (FGS-MSNC-B/G)



6" Snap-on Cover for Horizontal Straight Section (FGS-MSSC-B/G)

## Ordering Information

Description	Catalog Number	
	Yellow System	Black System
<b>4x6 straight sections</b>		
Horizontal straight section; 6' long, cover sold separately	FGS-MSHS-B	FGSB-MSHS-B
Expandable straight section	FGS-MVAR-B	FGSB-MVAR-B
Slack storage straight section	FGS-MSHS-STOR-B	FGSB-MSHS-STOR-B
<b>4x6 accessories</b>		
Hinged cover kit for horizontal straight section; includes three mounting hinges and three clips	FGS-MSNC-B/G	FGSB-MSNC-B/G
6" snap-on cover kit for horizontal straight section; includes six capture clips with mounting clasps	FGS-MSSC-B/G	FGSB-MSSC-B/G
Kit - 10 black capture clips	FGS-DHCP	FGS-DHCP
Kit - 10 black capture clips and 10 hinges	FGS-DHHC (Yellow Hinge)	FGSB-DHHC (Black Hinge)

## Snap-Fit™ Junction

The Snap-Fit™ junction assembly is available for the 6-inch FiberGuide system. The new junction is a completely tool-less junction. No additional tools are required for installation or removal. The Snap-Fit Junction exhibits superior holding force and accommodates support brackets. A warning label indicating caution around fiber optic cable is included with each junction kit.



Snap-Fit Junction (FGS-MFAW-B)

## Ordering Information

Description	Catalog Number	
	Yellow System	Black System
4x6 Snap-fit junction	FGS-MFAW-B	FGSB-MFAW-B

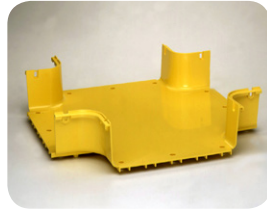


# 4x12 System

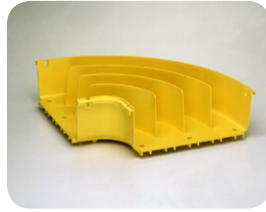
Fittings – 4" H x 12" W



Horizontal T  
(FGS-MHRT-F)



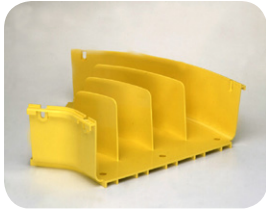
Horizontal Cross  
(FGS-MHXP-F)



90° Horizontal Elbow  
(FGS-MH9E-F)



90° Down Elbow  
(FGS-MD9E-F)



45° Horizontal Elbow  
(FGS-MH4E-F)



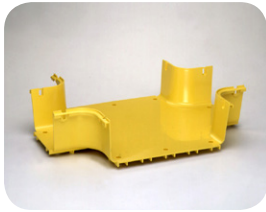
45° Up Elbow  
(FGS-MU4E-F)



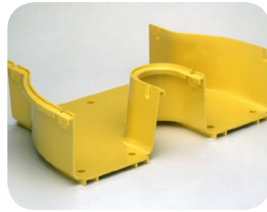
45° Down Elbow  
(FGS-MD4E-F)



Horizontal T  
with Single 6" Exit  
(FGS-MHRT-F/B)



Horizontal Cross  
with Two 6" Exits  
(FGS-MHXP-B/F)



4x12 to Dual 4x6  
Adapter  
(FGS-MDSA-F2B)



4x12 to Single 4x6 Adapter  
(FGS-MDSA-FB)



4x12 to 4x6  
Adapter – Right  
(FGS-MDSA-FB-R)



4x12 to 4x6 Adapter – Left  
(FGS-MDSA-FB-L)



End Cap  
(FGS-HMEC-F)



Expandable  
Straight Section  
(FGS-MVAR-F)



12" Cut-in T  
(FGS-MHIS-F)



Cut-in T Fixture  
(FGS-MHIS-JIG-A/B/F shown  
on a straight section)



Snap-on Cover  
(FGS-SH4E-F  
shown separate)



Snap-on Cover Installation



Snap-on Cover  
(FGS-SH4E-F shown installed)

# 4x12 System

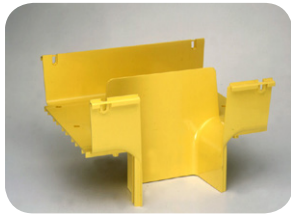
Fittings – 4" H x 12" W

## Ordering Information

Description	Number of Junctions	Catalog Number			
		Yellow System	Yellow System Snap-on Cover	Black System	Black System Snap-on Cover
<b>4x12 fittings</b>					
Horizontal T	3	FGS-MHRT-F	FGS-SHRT-F	FGSB-MHRT-F	FGSB-SHRT-F
Horizontal cross	4	FGS-MHXP-F	FGS-SHXP-F	FGSB-MHXP-F	FGSB-SHXP-F
90° horizontal elbow	2	FGS-MH9E-F	FGS-SH9E-F	FGSB-MH9E-F	FGSB-SH9E-F
90° down elbow	2	FGS-MD9E-F	FGS-SD9E-F	FGSB-MD9E-F	FGSB-SD9E-F
45° horizontal elbow	2	FGS-MH4E-F	FGS-SH4E-F	FGSB-MH4E-F	FGSB-SH4E-F
45° up elbow, metal cover included	2	FGS-MU4E-F	FGS-SU4E-F	FGSB-MU4E-F	FGSB-SU4E-F
45° down elbow	2	FGS-MD4E-F	FGS-SD4E-F	FGSB-MD4E-F	FGSB-SD4E-F
Horizontal T with single 6" exit	(2) 4x12, (1) 4x6	FGS-MHRT-F/B	FGS-SHRT-F/B	FGSB-MHRT-F/B	FGSB-SHRT-F/B
Horizontal cross with two 6" exits	(2) 4x12, (2) 4x6	FGS-MHXP-B/F	FGS-SHXP-B/F	FGSB-MHXP-B/F	FGSB-SHXP-B/F
<b>4x12 conversions</b>					
4x12 to dual 4x6 adapter	(1) 4x12, (2) 4x6	FGS-MDSA-F2B	FGS-SDSA-F2B	FGSB-MDSA-F2B	FGSB-SDSA-F2B
4x12 to single 4x6 adapter	(1) 4x12, (1) 4x6	FGS-MDSA-FB	FGS-SDSA-FB	FGSB-MDSA-FB	FGSB-SDSA-FB
4x12 to 4x6 right adapter; includes fastening hardware		FGS-MDSA-FB-R		FGS-MDSA-FB-R	
Fixed metal cover for right adapter		FGS-VDSA-FB-R		FGS-VDSA-FB-R	
4x12 to 4x6 left adapter; includes fastening hardware		FGS-MDSA-FB-L		FGS-MDSA-FB-L	
Fixed metal cover for left adapter		FGS-VDSA-FB-L		FGS-VDSA-FB-L	
Expandable straight section	2	FGS-MVAR-F	–	FGSB-MVAR-F	–
4" Cut-in T; assembly hardware included	–	FGS-MHIS-A	–	FGSB-MHIS-A	–
6" Cut-in T; assembly hardware included	–	FGS-MHIS-B	–	FGSB-MHIS-B	–
12" Cut-in T; assembly hardware included	–	FGS-MHIS-F	–	FGSB-MHIS-F	–
Cut-in T fixture	–	FGS-MHIS:JIG-A/B/F	–	FGS-MHIS:JIG-A/B/F	–
4x12 end cap		FGS-HMEC-F		FGS-HMEC-F	
<b>4x12 variable support locator kits for;</b> Each kit contains all necessary mounting hardware. Fitting sold separately.					
FGS-MDSP-F (downspout)		FGS-MDSP-F-VS		FGS-MDSP-F-VS	
FGS-MHRT-F (horizontal T)		FGS-MHRT-F-VS		FGS-MHRT-F-VS	
FGS-MHXP-F (horizontal cross)		FGS-MHXP-F-VS		FGS-MHXP-F-VS	
FGS-MH9E-F (90° horizontal elbow)		FGS-MH9E-F-VS		FGS-MH9E-F-VS	
FGS-MHRT-F/B (horizontal T – 6"/12")		FGS-MHRT-F/B-VS		FGS-MHRT-F/B-VS	
FGS-MHXP-B/F (horizontal cross– 6"/12")		FGS-MHXP-B/F-VS		FGS-MHXP-B/F-VS	

## 4x12 System

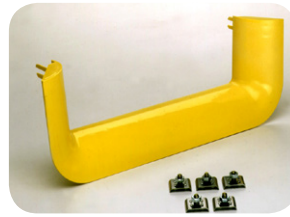
### Downspouts and Attachments – 4" H x 12" W



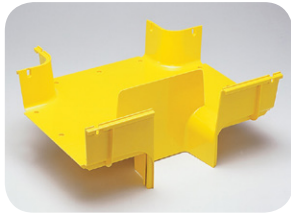
Downspout  
(FGS-MDSP-F)



Cover for 4x12 Downspout  
(FGS-SDSP-F)



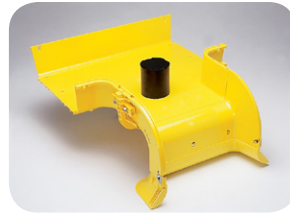
Trumpet Flare  
(FGS-MTRM-F)



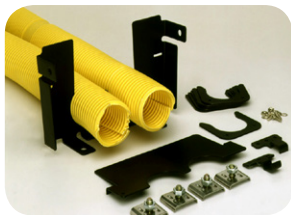
Downspout  
with Rear T  
(FGS-MDRT-F)



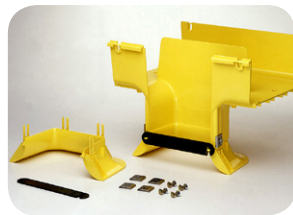
Island T  
(FGS-ISLAND-F)



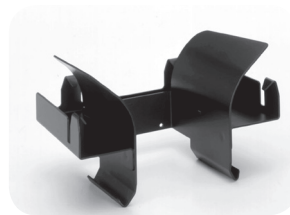
Island T with Recessed Dividing Spool  
(FGS-ISLAND3-F shown with  
12" Junction, 90° Down Elbow  
and Trumpet Flare)



4x6 Dual 2"  
Flex Tube Attachment  
(FGS-KT03-B)



4x6 Trumpet Flare Kit  
(FGS-MTRM-B shown alone and  
attached to 4x12 Downspout)



4x12 to 4x4  
Downspout Converter  
(FGS-HDSI-F/D)



The FGS-HDSI-F/D attached to both the 4x12 downspout and the 4x4 slotted duct without the use of hardware

## 4x12 System

### Downspouts and Attachments – 4" H x 12" W

An array of 4x12 downspouts and attachments are available to feed fiber from overhead straight sections into fiber optic equipment below. The 4x12 downspout features a 4x6 exit and accepts the 4x6 exit attachments listed below.

### Ordering Information

Description	Number of Junctions	Yellow System Catalog Number	Black System Catalog Number
<b>4x12 downspouts</b>			
Downspout	2*	FGS-MDSP-F	FGSB-MDSP-F
Cover for 4x12 downspout	–	FGS-SDSP-F	FGSB-SDSP-F
Insertable downspout	–	FGS-MDSP-F/I	FGSB-MDSP-F/I
Trumpet flare	–	FGS-MTRM-F	FGSB-MTRM-F
Downspout with rear T	3*	FGS-MDRT-F	FGSB-MDRT-F
Island T with spool and factory installed trumpet flare	2	FGS-ISLAND-F	FGSB-ISLAND-F
Island T with trumpet and dividing spool; Variable Support Locator Kit included	2	FGS-ISLAND-F-513	FGSB-ISLAND-F-513
Island T with recessed dividing spool	3	FGS-ISLAND3-F	FGSB-ISLAND3-F
<b>4x12 attachments</b>			
4x6 dual 2" flex tube attachment			
5' length	–	FGS-KT03-B	FGSB-KT03-B
10' length	–	FGS-KT03-B-10F	FGSB-KT03-B-10F
15' length	–	FGS-KT03-B-15F	FGSB-KT03-B-15F
4x6 trumpet flare kit; used on 4x12 downspouts		FGS-MTRM-B	FGSB-MTRM-B
4x12 to 4x4 downspout converter; converts downspout opening to accept 4x4 slotted duct	–	FGS-HDSIF/D	FGS-HDSIF/D
4x12 to 2x2 downspout converter	–	FGS-HDSIF/C	FGS-HDSIF/C

\*An additional junction is needed if drop is to fitting or straight section. This 4x6 junction must be a junction type FGS-MFAW-B, FGSB-MFAW-B.

# 4x12 System

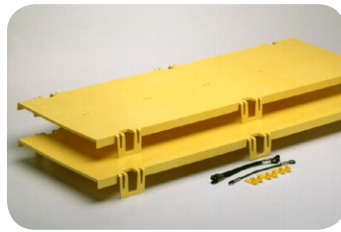
## Straight Section – 4" H x 12" W

The unique nine-channel design of the 4x12 FiberGuide straight section provides unmatched strength and allows the attachment of support structure without the need to cut or drill holes within the raceway. This ensures that the patch cords will not come in contact with any screw heads or bolts, an important consideration in 4x4, 4x6, and 4x12 systems where higher cable counts apply increased pressure on the patch cords at the bottom of the raceway.

The 4x12 system covers feature a snap-on design. This allows the cover to be used in environments with limited headroom. Two 3-foot cover sections come with each order, making it easy for one person to remove the covers. Each cover kit includes a tether kit. The straight section covers are designed to be placed over the 4x12 downspouts, speeding installation time by reducing the number of measurements and cuts that need to be made.



Horizontal Straight Section (FGS-MSHS-F)



Horizontal Straight Section Cover (FGS-MSSC-F includes two 3' Lengths and Tethering Hardware)



Expandable Straight Section (FGS-MVAR-F)



12" Hinged Cover for Horizontal Straight Section (FGS-MSNC-F)



Straight Section Cover in Tethered Position



Straight Section Cover Attached to Straight Section

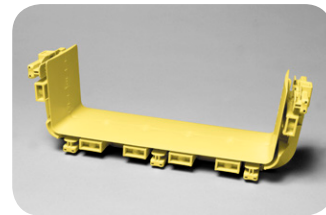
## Ordering Information

Description	Catalog Number	
	Yellow System	Black System
<b>4x12 straight section</b>		
Horizontal straight section; 6' long, cover sold separately	FGS-MSHS-F	FGSB-MSHS-F
Expandable straight section	FGS-MVAR-F	FGSB-MVAR-F
Slack storage straight section	FGS-MSHS-STOR-F	FGSB-MSHS-STOR-F
<b>4x12 accessories</b>		
Hinged cover kit for horizontal straight section; includes five mounting hinges and three clips	FGS-MSNC-F	FGSB-MSNC-F
Snap-on cover kit for horizontal straight section; includes 3' covers, optional tethering kit	FGS-MSSC-F	FGSB-MSSC-F
Kit - 10 black capture clips	FGS-DHCP	FGS-DHCP
Kit - 10 black capture clips and 10 hinges	FGS-DHHC	FGSB-DHHC

## 4x12 System

### Snap-Fit™ Junction – 4" H x 12" W

The new Snap-Fit™ junction is available for the 12-inch FiberGuide system. The Snap-Fit junction is a completely toolless junction. No additional tools are required for installation or removal. The Snap-Fit junction exhibits superior holding force and accommodates support brackets.



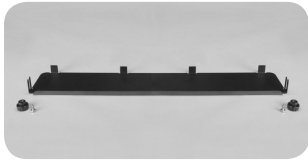
4x12 Snap-Fit Junction  
(FGS-MFAW-F)

## Ordering Information

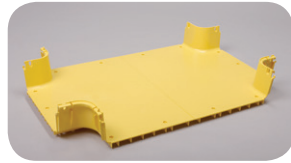
Description	Catalog Number	
	Yellow System	Black System
4x12 Snap-Fit™ junction	FGS-MFAW-F	FGSB-MFAW-F

## 4x24 System

Fittings – 4" H x 24" W



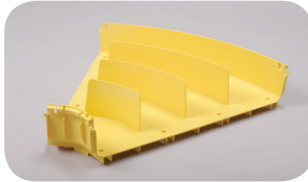
End Cap  
(FGS-HMEC-H)



Horizontal Cross with Dual  
12" Exits  
(FGS-MHXP-F/H)



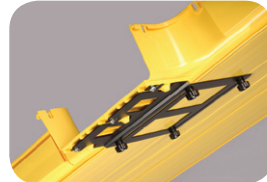
Horizontal Cross  
(FGS-MHXP-H)



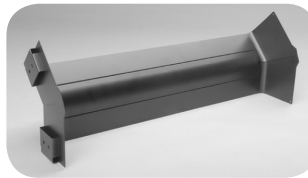
45° Horizontal Elbow  
(FGS-MH4E-H)



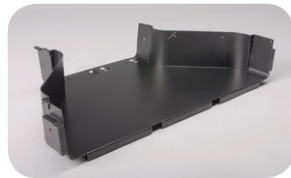
Horizontal T  
with Single 12" Exit  
(FGS-MHRT-H/F)



12" Cut-in T  
(FGS-MHIS-F/H)



45° Down Elbow  
(FGS-MD4E-H)



4x24 to 4x12 Adapter  
(FGS-MDSA-HF)



45° Up Elbow  
(FGS-MU4E-H)

## Ordering Information

Description	Catalog Number	
	Yellow System	Black System
<b>4x24 fittings</b>		
45° horizontal elbow	FGS-MH4E-H	FGSB-MH4E-H
Horizontal T with single 12" exit	FGS-MHRT-H/F	FGSB-MHRT-H/F
Horizontal T with three 24" exits	FGS-MHRT-H	FGSB-MHRT-H
Horizontal cross	FGS-MHXP-H	FGSB-MHXP-H
Horizontal cross with dual 12" exits	FGS-MHXP-F/H	FGSB-MHXP-F/H
45° up elbow	FGS-MU4E-H	FGSB-MU4E-H
45° down elbow	FGS-MD4E-H	FGSB-MD4E-H
<b>4x24 conversions</b>		
12" cut-in T for 4x24*	FGS-MHIS-F/H	FGSB-MHIS-F/H
6" cut-in T for 4x24*	FGS-MHIS-B/H	FGSB-MHIS-B/H
4" cut-in T for 4x24*	FGS-MHIS-A/H	FGSB-MHIS-A/H
4x24 to 4x12 adapter	FGS-MDSA-HF	FGSB-MDSA-HF
<b>4x24 end cap</b>	FGS-HMEC-H	FGSB-HMEC-H

\*Designed exclusively for the 4x24" system.

## 4x24 System

### Downspouts – 4" H x 24" W

4x24 downspouts and attachments feed fiber from overhead straight sections into fiber optic equipment below.



Island T with Single 12" Exit  
(FGS-ISLAND-H/F)



Trumpet Flare  
(FGS-MTRM-H)

## Ordering Information

Description	Catalog Number	
	Yellow System	Black System
Island T with single 12" exit	FGS-ISLAND-H/F	FGSB-ISLAND-H/F
Trumpet flare	FGS-MTRM-H	FGS-MTRM-H

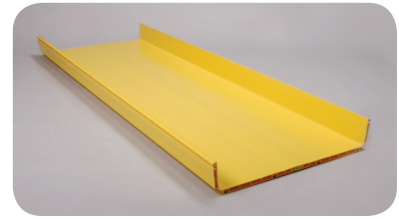


## 4x24 System

Straight Section, Snap-Fit™ Junctions and covers – 4" H x 24" W

### Straight Section

The unique double wall channel design of the 4x24 straight section provides exceptional strength and durability for high fiber count applications and allows the standard system to be attached to the support structure without the need to cut or drill any holes within the trough. The six channel design ensures that the patch cords will not come in contact with any screw heads or bolts, an important consideration in 4x24 systems where higher cable counts apply increased pressure on patch cords at the bottom of the trough.



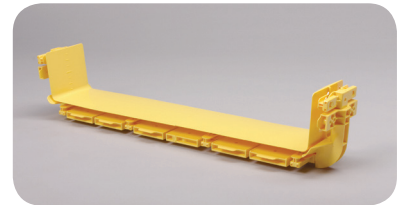
Straight Section  
(FGS-MSHS-H)

### Ordering Information

Description	Catalog Number	
	Yellow System	Black System
4x24 straight section; horizontal straight section, 6' long	FGS-MSHS-H	FGSB-MSHS-H

### Snap-Fit Junction

The Snap-Fit™ Junction assembly is available for the 24-inch FiberGuide System. The Snap-Fit junction is a completely tool-less junction. No additional tools are required for installation or removal. The junction exhibits superior holding force and accommodates support brackets. A warning label is included with each junction kit.



Snap-Fit Junction  
(FGS-MFAW-H)

### Ordering Information

Description	Catalog Number	
	Yellow System	Black System
4x24 Snap-Fit™ junction	FGS-MFAW-H	FGSB-MFAW-H

## Cover Kits

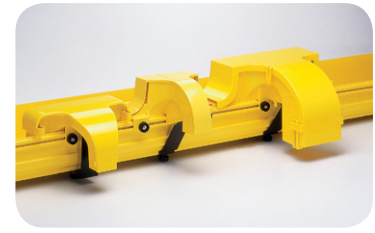
### Ordering Information

Description	Catalog Number
Cover for 4"x24"x6' straight section - FGS-MSHS-H	FGS-FSFC-H
Cover for 4"x24"horizontal tee with single 12" Exit - FGS-MHRT-H/F	FGS-FHRT-H/F
Cover for 4"x24"horizontal cross with dual 12" Exits - FGS-MHXP-F/H	FGS-FHXP-F/H
Cover for 4"x24"horizontal cross - FGS-MHXP-H	FGS-FHXP-H
Cover for 4"x24" 45° horizontal elbow - FGS-MH4E-H	FGS-FH4E-H
Cover for 4"x24"horizontal tee - FGS-MHRT-H	FGS-FHRT-H
Cover for 4"x24" 4° down elbow - FGS-MD4E-H	FGS-FD4E-H
Cover for 4"x24" to 4"x12" reducer - FGS-MDSA-HF	FGS-FDSA-HF

# Express Exit™ Family

For 4x4, 4x6 and 4x12 Systems

CommScope's patented\* Express Exit™ family accommodates various raceway environments and applications. By simply securing an Express Exit to the sidewall of any 4x4, 4x6, 4x12, or 4x24 FiberGuide straight section, jumpers can be permanently or temporarily routed to fiber optic terminal (FOT) equipment below. No cutting of the FiberGuide system is required. Positioning a drop with a member of the Express Exit family greatly simplifies installation, protects the integrity of fibers already present in the raceway, and increases overall flexibility of the raceway system. All Express Exits guarantee 2-inch bend radius protection.



Express Exit Family

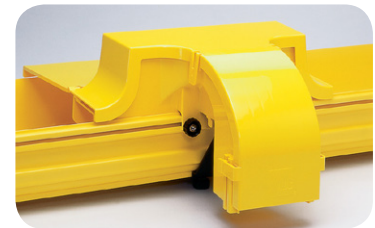
Express Exit Style	Height Above Sidewall	Exit Opening	3 mm Patch Cord Capacity	2 mm Patch Cord Capacity	Hinged Rear Cover	Exit Fin Inserts
2-Inch Express Exit	4"	2" x 2" <sup>1</sup>	150	350	No	No
Low-Profile Express Exit	2"	2" x 2" <sup>1</sup>	150	350	No	No
4-Inch Express Exit	4"	4" x 4" <sup>2</sup>	300	700	Yes	Yes

<sup>1</sup>Accepts all standard 2x2" attachments.

<sup>2</sup>Accepts all standard 4x4" attachments.

## 4-Inch Express Exit™

The 4-Inch Express Exit is designed to distribute and manage medium cable counts to FOT or ODF equipment. It features a 4-inch by 4-inch exit opening to accept all standard 4x4 downspout attachments and includes insertable exit fins and removable rear cable guides for additional cable management.



4-Inch Express Exit

## Ordering Information

Description	Catalog Number	
	Yellow System	Black System
<b>4-inch Express Exit™</b>		
Express Exit; base, base cover, mounting hardware, support bracket, and exit inserts included	FGS-MEXPE-A/B/F	FGSB-MEXP-E-A/B/F
<b>4-inch accessories</b>		
Express Exit rear hinged cover kit; one 4x4, 4x6, 4x12 rear hinged cover	FGS-MEXC-E-A/B/F	FGSB-MEXC-E-A/B/F
Express Exit rear hinged cover for 4x4 raceway	FGS-MEXC-E-A	FGSB-MEXC-E-A
Express Exit rear hinged cover for 4x6 raceway	FGS-MEXC-E-B	FGSB-MEXC-E-B
Express Exit rear hinged cover for 4x12 raceway	FGS-MEXC-E-F	FGSB-MEXC-E-F

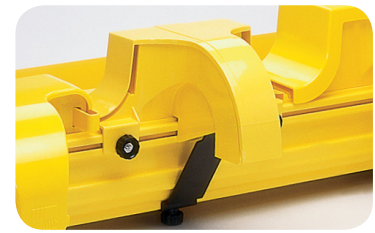
\*Other patents pending.

## Express Exit™ Family

For 4x4, 4x6 and 4x12 Systems

### 2-Inch Express Exit™

The 2-Inch Express Exit, CommScope's initial offering in the Express Exit product family, accommodates up to 350, 2 mm patch cords. The patch cords are routed from a 4x4, 4x6, 4x12 or 4x24 straight section to FOT equipment below the raceway.



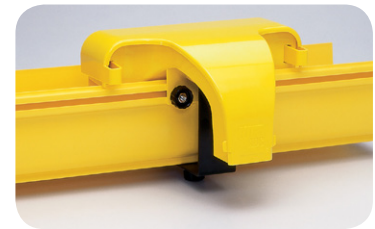
2-Inch Express Exit

#### Ordering Information

Description	Catalog Number	
	Yellow System	Black System
2-Inch Express Exit™; base, base cover, mounting hardware and support bracket included	FGS-MEXP-A/B/F	FGSB-MEXP-A/B/F

### Low-Profile Express Exit™

Designed for low-ceiling or height-restricted environments, the Low-Profile Express Exit features a front-removable cover and extends only 2 inches above the FiberGuide straight section sidewall. It also includes removable rear cable guides for additional cable management.



Low-Profile Express Exit

#### Ordering Information

Description	Catalog Number	
	Yellow System	Black System
Low-Profile Express Exit™; base, base cover, mounting hardware and support bracket included	FGS-MEXP-LP-A/B/F	FGSB-MEXP-LP-A/B/F

### Attachments for 2-Inch Express Exit™ and Low-Profile Express Exit™

#### Ordering Information

Description	Catalog Number	
	Yellow System	Black System
2x2 trumpet flare; junction included	FGS-MTRM-C	FGSB-MTRM-C
<b>Single 2" flex tube attachment;</b> 2" flex tube and a 2x2 junction to attach to Express Exit unit included		
5' length	FGS-MEX1-C-5F	FGSB-MEX1-C-5F
10' length	FGS-MEX1-C-10F	FGSB-MEX1-C-10F
15' length	FGS-MEX1-C-15F	FGSB-MEX1-C-15F
<b>Dual 7/8" flex tube attachment;</b> two lengths of 7/8" flex tube and a 2" junction to attach to Express Exit unit included		
(2) 5' lengths	FGS-KT03-C	FGSB-KT03-C
(2) 10' lengths	FGS-KT03-C-10F	FGSB-KT03-C-10F
(3) 15' lengths	FGS-KT03-C-15F	FGSB-KT03-C-15F

## 2x6, 4x4, 4x6 System Support Kits



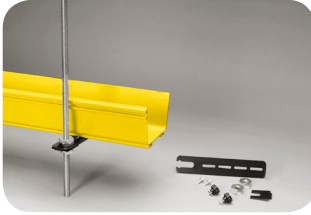
Ladder Rack Cantilever Support Bracket Kit (FGS-HDLB-4)



L Bay Support Bracket Kit (FGS-HLBK shown alone and attached to 4x4 FiberGuide)



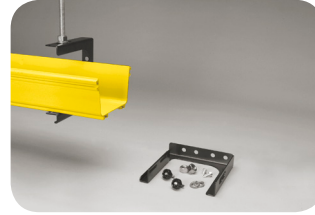
New Threaded Rod Bracket kit (FGS-HNTR-XX shown alone and attached to threaded rod)



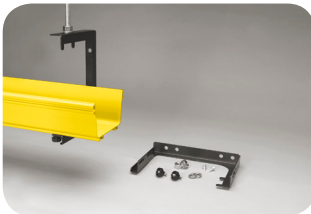
Existing Threaded Rod Bracket Kit (FGS-HETR-XX shown alone and attached to threaded rod)



Modified New Threaded Rod Bracket Kit (FGS-HNTR-5/8-A shown alone and attached to threaded rod)



Top Support Low Profile C-bracket Kit (FGS-HNTS-XX-LP)



Top Support C-Bracket Kit (FGS-HNTS-XX)



Modified Existing Threaded Rod Bracket Kit (FGS-HETR-5/8-A shown alone and attached to threaded rod)



Center Support Bracket Kit (FGS-HTUB-XX)

## Ordering Information

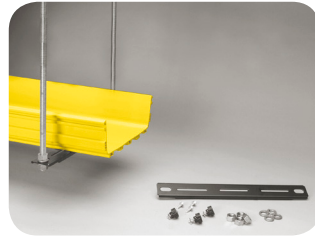
Description	Catalog Number
<b>2x6, 4x4, 4x6 system support kits</b>	
Ladder rack cantilever support bracket kit	FGS-HDLB-3
L bay support bracket kit	FGS-HLBK
New threaded rod bracket kit; (XX = size: 1/2", 5/8", 12 mm, 14 mm, 16 mm, 18 mm)	FGS-HNTR-XX
Existing threaded rod bracket kit; (XX = size: 1/2", 5/8", 12 mm, 14 mm, 16 mm)	FGS-HETR-XX
Modified new threaded rod bracket kit; 5/8"	FGS-HNTR-5/8-A
Top support low-profile C-bracket kit; (XX = size: 1/2", 5/8", 12 mm, 14 mm, 16 mm)	FGS-HNTS-XX-LP
Top support C-bracket kit; (XX = size: 1/2", 5/8", 12 mm, 14 mm, 16 mm)	FGS-HNTS-XX
Modified existing threaded rod bracket kit; 5/8"	FGS-HETR-5/8-A
Center support bracket kit; (XX = size: 1/2", 5/8", 12 mm, 14 mm, 16 mm, 20 mm)	FGS-HTUB-XX
Digital cableway bracket kit; 305 mm (12")	FGS-HCBL-12
Digital cableway bracket kit; 381 mm (15")	FGS-HCBL-15
Ladder rack center support bracket kit	FGS-HNLR-AB
OMX frame center support bracket kit; 16 mm (.63")	FGS-HOMX-16MM
Under floor support bracket kit	FGS-HUFB-A

Custom brackets are available, please contact CommScope.

## 4x12 System Support Kits



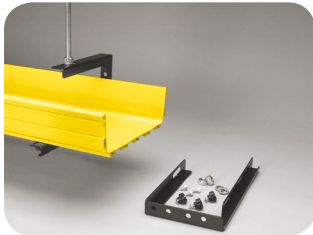
Existing Ladder Rack Center Support Bracket Kit (FGS-HETP-F-XX)



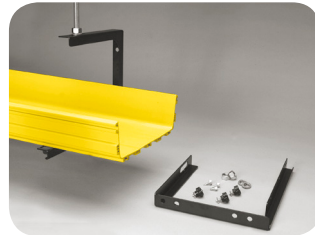
Trapeze Bracket Kit (FGS-HNTP-F-XX)



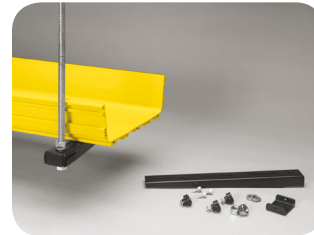
Center Support Threaded Rod Bracket Kit (FGS-HTUB-F-XX shown alone and attached to threaded rod)



Top Support Low-Profile Threaded Rod Bracket Kit (FGS-HNTS-F-XX-LP shown alone and attached to threaded rod)



Top Support Threaded Rod Bracket Kit (FGS-HNTS-F-XX)



New Threaded Rod Bracket Kit (FGS-HNTR-F-XX)

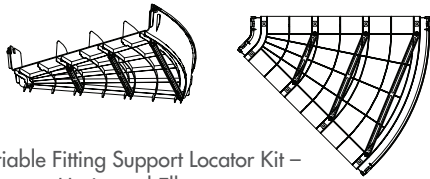


Existing Threaded Rod Bracket Kit (FGS-HETR-F-XX)

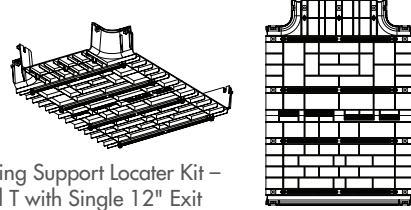
## Ordering Information

Description	Catalog Number
<b>4x12 system support kits</b>	
New ladder rack center support bracket kit	FGS-HNLR-F
Existing ladder rack center support bracket kit; (XX = size: 1/2", 5/8", 12 mm, 14 mm, 16 mm)	FGS-HETP-F-XX
Trapeze bracket kit; (XX = size: 1/2", 5/8", 12 mm, 14 mm, 16 mm)	FGS-HNTP-F-XX
Center support threaded rod bracket kit; (XX = size: 1/2", 5/8", 12 mm, 14 mm, 16 mm, 20 mm)	FGS-HTUB-F-XX
Top support low-profile threaded rod C-bracket kit; (XX = size: 1/2", 5/8", 12 mm, 14 mm, 16 mm)	FGS-HNTS-F-XX-LP
Top support threaded rod C-bracket kit; (XX = size: 1/2", 5/8", 12 mm, 14 mm, 16 mm)	FGS-HNTS-F-XX
New threaded rod bracket kit; (XX = size: 5/8", 14 mm, 16 mm, 18 mm)	FGS-HNTR-F-XX
Existing threaded rod bracket kit; (XX = size: 5/8", 14 mm, 16 mm)	FGS-HETR-F-XX

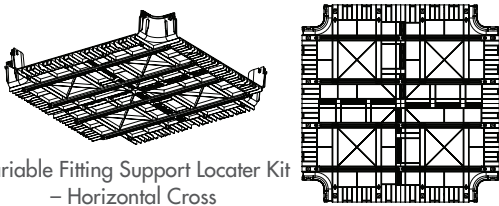
# 4x24 System Support Kits



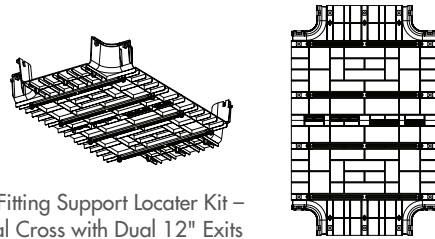
Variable Fitting Support Locator Kit – Horizontal Elbow (FGS-MH4E-H-VS)



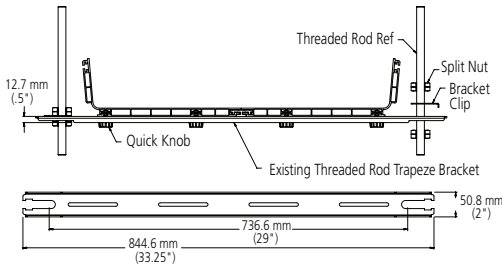
Variable Fitting Support Locator Kit – Horizontal T with Single 12" Exit (FGS-MHRT-H/F-VS)



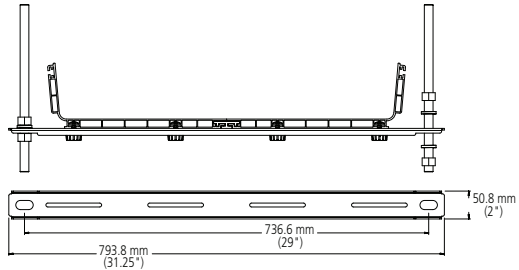
Variable Fitting Support Locator Kit – Horizontal Cross (FGS-MHXP-H-VS)



Variable Fitting Support Locator Kit – Horizontal Cross with Dual 12" Exits (FGS-MHXP-F/H-VS)



Existing 5/8" Threaded Rod Trapeze Bracket Kit (FGS-HETP-H-5/8)



New 5/8" Threaded Rod Trapeze Bracket Kit (FGS-HNTP-H-5/8)

## Ordering Information

Description	Catalog Number
<b>4x24 System Support Kits</b>	
Variable fitting support locator kit for;	
Horizontal elbow	FGS-MH4E-H-VS
Horizontal T with single 12" exit	FGS-MHRT-H/F-VS
Horizontal cross	FGS-MHXP-H-VS
Horizontal cross with dual 12" exits	FGS-MHXP-F/H-VS
Threaded rod trapeze bracket kit for;	
Existing; 5/8"	FGS-HETP-H-5/8
New; 5/8"	FGS-HNTP-H-5/8



## COMMSCOPE REGIONAL SALES HEADQUARTERS:

### North America

Greensboro, NC, USA  
Ph: +1-800-553-0938  
Fx: +1-717-986-7406

### Latin America

Buenos Aires, Argentina  
Ph: +54-11-4733-2200  
Fx: +54-11-4733-2282

### Europe

Kessel-Lo, Belgium  
Ph: +32-16-35-1321  
Fx: +32-16-35-2188

### Mid East & Africa

Cergy-Pontoise, France  
Ph: +33-1-3420-2122  
Fx: +33-1-3420-2268

### Asia

Hong Kong, China  
Ph: +852-2735-1628  
Fx: +852-2735-1625

### Pacific

Sydney, Australia  
Ph: +61-2-8748-9500  
Fx: +61-2-9748-8487

## COMMSCOPE IN EUROPE, MIDDLE EAST, AFRICA AND INDIA:

### Austria

Vienna  
Ph: +43-1-90560-1204  
Fx: +43-1-90560-1270

### Belgium

Kessel-Lo  
Ph: +32-16-35-2326  
Fx: +32-16-35-2353

### Bulgaria

Sofia  
Ph: +359-2-971-2152  
Fx: +359-2-971-2153

### Czech & Slovak Rep. Kurim

Ph: +420-541-162-112  
Fx: +420-541-162-223

### Denmark

Glostrup  
Ph: +45-70-15-52-00  
Fx: +45-43-44-14-14

### Egypt

Cairo  
Ph: +20-2-2419-2334  
Fx: +20-2-2417-7647

### Finland

Helsinki  
Ph: +358-95-12-34-20  
Fx: +358-95-12-34-250

### France

Cergy-Pontoise  
Ph: +33-1-3420-2122  
Fx: +33-1-3420-2268

### Germany

Darmstadt  
Ph: +49-6151-607-1547  
Fx: +49-6151-607-1219

### Greece/Cyprus

Athens  
Ph: +30-210-9370-396  
Fx: +30-210-9370-655

### Hungary

Budapest  
Ph: +36-1-289-1007  
Fx: +36-1-289-1010

### India

Bangalore  
Ph: +91-80-4011-5000  
Fx: +91-80-4011-5030

### Italy

Collegno (Torino)  
Ph: +39-011-4012-111  
Fx: +39-011-4012-268

### Kazakhstan

Almaty  
Ph: +7-327-244-5875  
Fx: +7-327-244-5877

### Lithuania

Vilnius  
Ph: +370-5-213-1402  
Fx: +370-5-213-1403

### Netherlands

Den Bosch  
Ph: +31-73-6246-246  
Fx: +31-73-6246-958

### Norway

Nesbru  
Ph: +47-99-66-77-50  
Fx: +47-66-77-88-98

### Poland

Warsaw  
Ph: +48-22-4576-700  
Fx: +48-22-4576-720

### Portugal

Evora  
Ph: +351-961-377-331  
Fx: +351-211-454-506

### Romania

Bucharest  
Ph: +40-21-311-3479  
Fx: +40-21-312-0574

### Russia

Moscow  
Ph: +7-495-790-7902  
Fx: +7-495-721-1894

### South Africa

Midrand, Gauteng  
Ph: +27-11-707-6300  
Fx: +27-11-466-3555

### Spain

Barcelona  
Ph: +34-93-291-0330  
Fx: +34-93-291-0608

### Sweden

Upplands Väsby  
Ph: +46-8-5072-5000  
Fx: +46-8-5072-5001

### Switzerland

Steinach  
Ph: +41-71-447-0-447  
Fx: +41-71-447-0-423

### Turkey

Istanbul  
Ph: +90-212-339-92-00  
Fx: +90-212-339-92-02

### U.A.E.

Dubai  
Ph: +971-4-3466511  
Fx: +971-4-3466513

### UK

Stanmore, Middx  
Ph: +44-208-420-8140  
Fx: +44-208-954-7467

### Ukraine

Kiev  
Ph: +380-44-206-2265  
Fx: +380-44-206-2264



[www.commscope.com](http://www.commscope.com)

Visit our website or contact your local CommScope representative for more information.

© 2015 CommScope, Inc. All rights reserved.

SnapFit, Express Exit and all trademarks identified by ® or ™ are registered trademarks or trademarks, respectively, of CommScope, Inc.

This document is for planning purposes only and is not intended to modify or supplement any specifications or warranties relating to CommScope products or services.

CA-310902.1-AE (11/15)