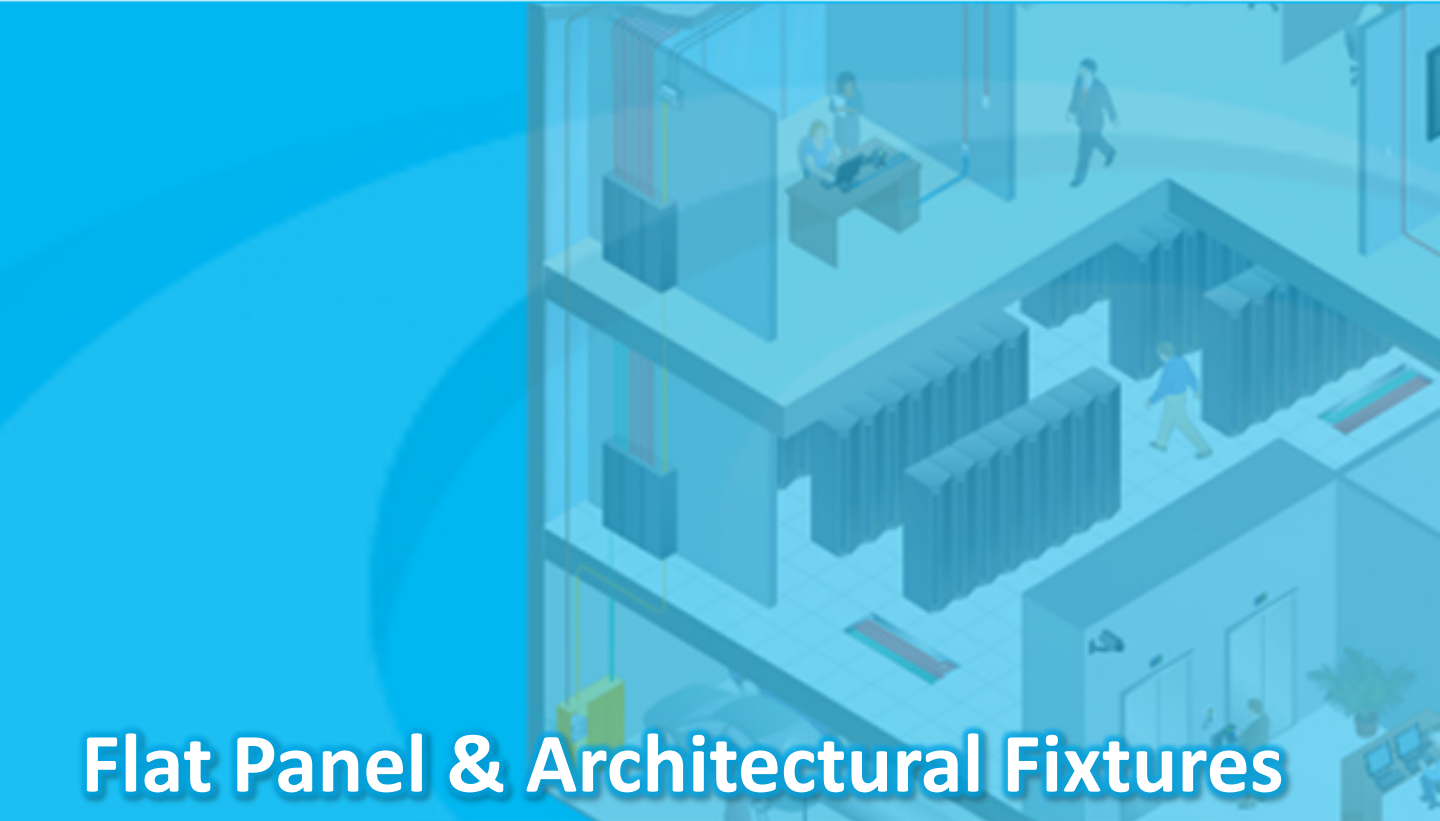




## Redwood Enabled Fixtures For Engine 3

**US/Canada**  
June 2015



# Flat Panel & Architectural Fixtures

Cree®

## ZR Series LED Troffer

Sensor MID#: SEN-3M1-W-GNEW1500



### Description

The ZR Series LED troffer portfolio delivers a high lumen output of superior 90 CRI light quality and is perfect for both new construction or renovation. Powered by Cree TrueWhite® Technology, the slim and lightweight ZR series troffer boasts up to 112 LPW performance along with Redwood Systems controls to meet local energy codes. The ZR Series embodies a breakthrough in balancing energy savings, visual comfort and initial cost.

### Dimensions (Nominal)

1'x4', 2'x2', 2'x4'

### Photometry

Lumen output (1'x4') = 3700 lm

Lumen output (2'x2') = 3500 lm

Lumen output (2'x4') = 3800 lm

Color temp (K) = 3500, 4000

CRI = 90

L70 @ 100,000 hours

### Field Programming #s (PIDs)

1'x4' = CR14VM10

2'x2' = CR22VM10

2'x4' = CR24VM10

### Available Regions

United States



### Finish Options

White

Product Literature / Links (as provided by manufacturer):

[1'x4' Spec](#)

[2'x2' Spec](#)

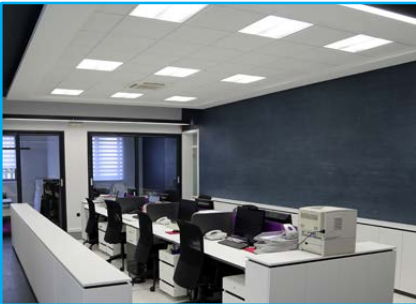
[2'x4' Spec](#)

[Website](#)



## MaxLite ArcMAX™ Volumetric LED Panel

Sensor MID#: SEN-3M1-W-GNEW1500



### Description

The ArcMAX Volumetric LED Panel uses low brightness, reformative optic technology to evenly disperse output, reduce glare, and avoid pixilation patterns. The ArcMAX is an outstanding product for use in data centers, offices, schools, and businesses where high performance has to be met with an architectural interest for both design and function considerations. The fixtures are IC-rated for direct contact with insulation, and damp-listed for installation variability.

### Dimensions (Nominal)

1'x4', 2'x2', 2'x4'

### Photometry

Lumen output (1'x4') = 3625 lm

Lumen output (2'x2') = 3545 lm

Lumen output (2'x4') = 3695 lm

Color temp (K) = 4100

CRI = >83

L70 @ 85,000 hours (TM-21 @ 25°C)

### Field Programming #s (PIDs)

1'x4' = MLVT1470

2'x2' = MLVT2270

2'x4' = MLVT2470

### Options

Surface mount kit available

### Available Regions

United States

Canada

Puerto Rico



### Finish Options

White

Product Literature / Links (as provided by manufacturer):

[1'x4' Spec](#)

[2'x2' Spec](#)

[2'x4' Spec](#)

[Website](#)



## MaxLite LED Flat Panel Performance Series

Sensor MID#: SEN-3M1-W-GNEW1500



### Description

The Direct Lit LED Flat Panel Performance Series are designed to lay in drop ceilings in data centers, offices, schools and healthcare applications. The design of the panels produces an even, consistent and shadow less light.

### Dimensions (Nominal)

1'x4', 2'x2'

### Photometry

Lumen output (1'x4') = 3125 lm

Lumen output (2'x2') = 3100 lm

Color temp (K) = 3500, 4100

CRI = >83

L70 @ 100,000 hours (TM-21 @ 25°C)

### Field Programming #s (PIDs)

1'x4' = ML14DI16

2'x2' = ML22DI16

### Options

Mounting options = T-Bar, rigid stem, cable suspension, and surface mount includes integrated seismic clips

### Available Regions

United States

Canada

Puerto Rico



### Finish Options

White

Product Literature / Links (as provided by manufacturer):

[1'x4' Spec](#)

[2'x2' Spec](#)

[Website](#)



## MHT Lighting Panel RC Series

Sensor MID#: N/A- Integrated Sensor



### Description

The Panel RC series is an Edge Lit Flat Panel, designed for drop-in ceilings. Stylish aluminum frame with ultra thin design is perfect for low profiled ceiling grid. High quality diffuser provides extraordinary brightness and full even light output. Panel comes assembled with (labor saving) built in Redwood Sensor and Gateway.

### Dimensions (Nominal)

2'x2', 1'x4', 2'x4'

### Photometry

Lumen output (2'x2') = 3100 lm @ 4000K

Lumen output (1'x4') = 3100 lm @ 4000K

Lumen output (2'x4') = 3100 lm @ 4000K

Lumen output (2'x4') = 6200 lm @ 4000K (2 Channels)

Color temp (K) = 4000, 5000

CRI = >85

L70 @ 70,000 hours (TM21 @ 25°C)

### Field Programming #s (PIDs)

2'x2' = MH221700

1'x4' = MH141700

2'x4' = MH241700

### Options

Non-Integrated Redwood Sensor and Gateway  
Surface Mount, Suspended Mount

### Available Regions

United States

Canada

Puerto Rico

### Finish Options

White Diffuser with Aluminum Frame  
Custom colors available

Product Literature / Links (as provided by manufacturer):

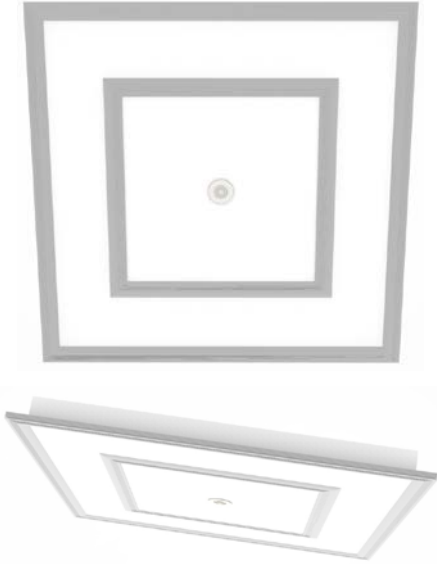
[Spec Sheet](#)

[Website](#)



## MHT Lighting Panel RC-DIR Series

Sensor MID#: N/A- Integrated Sensor



### Description

The Panel RC-DIR series is Direct Lit Flat Panel, designed for drop-in ceilings. Stylish aluminum frame is perfect for calculated energy efficient commercial office spaces demanding an exceedingly aesthetic appearance. Extraordinary brightness and even light output. Panel comes assembled with (labor saving) built in Redwood Sensor and Gateway.

### Dimensions (Nominal)

2'x2', 2'x4'

### Photometry

Lumen output (2'x2') = 3000 lm @ 4000K

Lumen output (2'x4') = 3000 lm @ 4000K

Lumen output (2'x4') = 6000 lm @ 4000K (2 Channels)

Color temp (K) = 4000, 5000

CRI = >85

L70 @ 70,000 hours (TM21 @ 25°C)

### Field Programming #s (PIDs)

2'x2' = MHIF2217

2'x4' = MHIF2417 (34W), MHIF2427 (68W)

### Options

Surface Mount, Suspended Mount

### Available Regions

United States

Canada

Puerto Rico

### Finish Options

Aluminum Frame with White Center Panel

Custom colors available

Product Literature / Links (as provided by manufacturer):

[Website](#)



## MHT Lighting Volumetric RC Series

Sensor MID#: N/A- Integrated Sensor



### Description

The Volumetric RC series is designed for drop-in ceilings. Durable powder coated steel housing with high quality acrylic lens and high reflectivity technology, provides extraordinary brightness and full even light output. Panel comes assembled with (labor saving) built in Redwood Sensor and Gateway.

### Dimensions (Nominal)

2'x2', 2'x4'

### Photometry

Lumen output (2'x2') = 3600 lm @ 4000K

Lumen output (2'x4') = 3500 lm @ 4000K

Lumen output (2'x4') = 6600 lm @ 4000K (2 Channels)

Color temp (K) = 4000, 5000

CRI = >85

L70 @ 120,000 hours (TM21 @ 25°C)

### Field Programming #s (PIDs)

2'x2' = MH221700

2'x4' = MH241700

### Options

Surface Mount

### Available Regions

United States

Canada

Puerto Rico

### Finish Options

White

Available in custom color center panel

Product Literature / Links (as provided by manufacturer):

[Spec Sheet](#)

[Website](#)





## SPM Lighting SOL Series

Sensor MID#: N/A- Integrated Sensor



### Description

SOL is Spanish for 'SUN' and is appropriately name as this luminaire delivers beautiful sun-like light to any indoor environment very efficiently at 107 lumens per watt. It also provides high uniformity of light with minimum glare, while the sleek design allow customer to mount in a T-Grid ceiling, surface mount or as a pendant. This luminaire is designed to last and has been UL rated to operate up to 90 watts continuous.

### Dimensions (Nominal)

2'x2'

### Photometry

Lumen output = 3761 lm  
Color temp(K) =3500, 4000  
CRI=>80  
L70@ 50,000 hours

### Field Programming #s (PIDs)

2'x2' = SP221700

### Options

Optional integrated Redwood gateway and sensor

### Available Regions

United States and Canada

### Finish Options

White

Product Literature / Links (as provided by manufacturer):

[Website](#)



## Tii Technologies Inc. TD Series

Sensor MID#: SEN-3M1-W-GNEW1500



### Description

The TD Series of LED Panels offer high brightness, energy efficiency and long life in an ultra-thin profile. Light uniformity is excellent, providing a comfortable working environment. The fixtures are IC rated for direct Insulation Contact and suitable for damp installations. Designed for drop in ceilings, surface mount and suspended mount applications. cUL, CE, NOM, and DesignLights compliant.

### Dimensions (Nominal)

2'x2' and 600x600

### Photometry

Lumen Output = 2975 lm at 3000K

Lumen Output = 3556 lm at 4000K

CRI = 86

L70@ 50,000 Hours

### Field Programming #s (PIDs)

2'x2' and 600x600 = TIFP2210

### Options

Surface Mount and Suspended Mount kits available

### Available Regions

United States

Canada

Puerto Rico

### Finish Options

White, Anodized Aluminum, custom finishes available

Product Literature / Links (as provided by manufacturer):

[Spec Sheet](#)

[Website](#)





# Suspended & Recessed Fixtures

## Birchwood Lighting CHLOE LED 475

Sensor MID#: Project Specific



### Description

Modern refinement, high efficiency and application versatility are the definition of CHLOE - the 4.75" round direct/indirect linear LED luminaire. Constructed of a heavy gauge extruded aluminum housing and extruded frosted white or frosted clear acrylic lens option.

### Dimensions (Nominal)

4', 8', continuous runs and custom sizes available (contact manufacturer)

4' = 2 Channel, 8' = 4 Channel

### Photometry

4' = 1300 lm/ft. 2 Channel (650 lm/ft. up and 650 lm/ft. down)

Color temp (K) = 3000, 3500, 4000

CRI => 80

3 MacAdam step

L70 > 60,000 hours (at 25°C ambient)

### Field Programming #s (PIDs)

Each 4' length = BRDI2001

Consult Redwood for all other lengths

### Options

Frosted Clear or Frosted White Lens

2-Circuit Switching

### Available Regions

United States and Canada

### Finish Options

Satin Clear Anodized (std.), Flat Black

Powder Coat, Matte White Powder Coat,

Custom finishes available

Product Literature / Links (as provided by manufacturer):

[Spec Sheet](#)

[Website](#)



## Birchwood Lighting COLLIN LED 325

Sensor MID#: Project Specific



BIRCHWOOD  
lighting

### Description

Direct/indirect linear luminaire, COLLIN combines contemporary design aesthetics with modern lighting functionality while delivering strong, even illumination to walls and ceilings via a variety of light distribution options. Constructed of heavy gauge extruded aluminum housing with either a surface or cable suspended mounting option.

### Dimensions (Nominal)

4', 8', continuous runs and custom sizes available (contact manufacturer)

4' = 2 Channel, 8' = 4 Channel

### Photometry

4' = 1060 lm/ft. 2 Channel (530 lm/ft. up and 530 lm/ft. down)

Color temp (K) = 3000, 3500, 4000

CRI => 80

3 MacAdam step

L70 > 60,000 hours (at 25° C ambient)

### Field Programming #s (PIDs)

Each 4' length = BRDI2001

Consult Redwood for all other lengths

### Options

Frosted Clear or Frosted White Lens

2-Circuit Switching

### Available Regions

United States and Canada

### Finish Options

Satin Clear Anodized (std.), Flat Black

Powder Coat, Matte White Powder Coat,

Custom finishes available

Product Literature / Links (as provided by manufacturer):

[Spec Sheet](#)

[Website](#)



## Birchwood Lighting HAILEY LED 325

Sensor MID#: Project Specific



PID#: BRLN004



### Description

HAILEY with its elegant round linear profile offers a large variety of options. Constructed of a heavy gauge extruded aluminum housing and extruded frosted white or frosted clear acrylic lens. Mounting options include surface, cable suspended and arm mount. Rotational System can be combined with either cable suspended or arm mount.

### Dimensions (Nominal)

4', 8', continuous runs and custom sizes available (contact manufacturer)

4' = 1 Channel, 8' = 2 Channel

### Photometry

4' = 620 lm/ft.

Color temp (K) = 3000, 3500, 4000

CRI => 80

3 MacAdam step

L70 > 60,000 hours (at 25° C ambient)

### Field Programming #s (PIDs)

4' = BRLN1004

8' = BRLN1004 (2 sensors)

Consult Redwood for all other lengths

### Options

Frosted Clear or Frosted White Lens Rotational System

### Available Regions

United States and Canada



### Finish Options

Satin Clear Anodized (std.), Flat Black Powder Coat, Matte White Powder Coat,  
Custom finishes available

Product Literature / Links (as provided by manufacturer):

[Spec Sheet](#)

[Website](#)



## Birchwood Lighting JAKE LED 325

Sensor MID#: Project Specific



### Description

JAKE provides elegant illumination in a sleek recessed linear luminaire engineered to blend seamlessly into the most refined architectural interiors. Constructed of heavy gauge extruded aluminum in trim, trimless mud over or T-Grid options. Lens is extruded acrylic with Frosted Clear or Frosted White finish, Louver option available.

### Dimensions (Nominal)

4', 8', continuous runs and custom sizes available (contact manufacturer)

4' = 1 Channel, 8' = 2 Channel

### Photometry

4' = 540 lm/ft.

Color temp (K) = 3000, 3500, 4000

CRI => 80

3 MacAdam step

L70 > 60,000 hours (at 25° C ambient)

### Field Programming #s (PIDs)

4' = BRLN1004

8' = BRLN1004 (2 sensors)

Consult Redwood for all other lengths

### Options

Frosted Clear or Frosted White Lens,  
T-grid Ceiling Mount, 90° Miter Angles

### Available Regions

United States and Canada

### Finish Options

Satin Clear Anodized (std.), Flat Black  
Powder Coat, Matte White Powder  
Coat

Product Literature / Links (as provided by manufacturer):

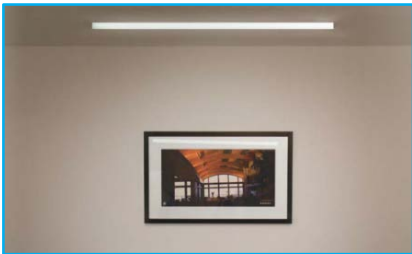
[Spec Sheet](#)

[Website](#)



## Birchwood Lighting JILL LED 325

Sensor MID#: Project Specific



### Description

JILL almost dissolves into the ceiling, yet still unveils a subtle glow from the unique dropped-lens feature. The lens is extruded acrylic and can be installed in most T-Grid ceiling systems. Choose from an illuminated acrylic or machined aluminum end caps.

### Dimensions (Nominal)

4', 8', continuous runs and custom sizes available (contact manufacturer)

4' = 1 Channel, 8' = 2 Channel

### Photometry

4' = 660 lm/ft.

Color temp (K) = 3000, 3500, 4000

CRI => 80

3 MacAdam step

L70 > 60,000 hours (at 25° C ambient)

### Field Programming #s (PIDs)

4' = BRLN1004

8' = BRLN1004 (2 sensors)

Consult Redwood for all other lengths

### Options

Frosted Clear, Frosted White or Prismatic Sided Lens, T-Grid Ceiling Mount

### Available Regions

United States and Canada



### Finish Options

Satin Clear Anodized (std.), Flat Black Powder Coat, Matte White Powder Coat

Product Literature / Links (as provided by manufacturer):

[Spec Sheet](#)

[Website](#)





## Birchwood Lighting KELSEY LED 325

Sensor MID#: N/A- Integrated Sensor



### Description

KELSEY linear luminaire delivers timeless design and modern efficiency from within a smooth and elegantly square profile. Constructed of a heavy gauge extruded aluminum housing and extruded frosted white or frosted clear acrylic lens. Rotational System can be combined with either cable suspended or arm mount.

### Dimensions (Nominal)

4', 8', continuous runs and custom sizes available (contact manufacturer)

4' = 1 Channel, 8' = 2 Channel

### Photometry

4' = 540 lm/ft.

Color temp (K) = 3000, 3500, 4000

CRI => 80

3 MacAdam step

L70 > 60,000 hours (at 25° C ambient)

### Field Programming #s (PIDs)

4' (Integrated) = BRLN1004

8' (integrated) = BRLN2004

Consult Redwood for all other lengths and non-integrated options

### Options

Integrated Redwood gateway and sensor. Surface, cable suspended and arm mounting. Frosted clear or Frosted white lens. Rotational System

### Available Regions

United States and Canada

### Finish Options

Satin Clear Anodized (std.), Flat Black Powder Coat, Matte White Powder Coat, Custom finishes available

Product Literature / Links (as provided by manufacturer):

[Spec Sheet](#)

[Website](#)



## Birchwood Lighting NOLAN LED 325

Sensor MID#: N/A- Integrated Sensor



### Description

NOLAN delivers specification grade streamlined illumination to any lighting application. Constructed of a heavy gauge extruded aluminum housing and extruded frosted white, frosted clear or prismatic sided acrylic lens. Options include surface mount or cable suspension mount and indirect shield.

### Dimensions (Nominal)

4', 8', continuous runs and custom sizes available (contact manufacturer)

4' = 1 Channel, 8' = 2 Channel

### Photometry

4' = 670 lm/ft.

Color temp (K) = 3000, 3500, 4000

CRI => 80

3 MacAdam step

L70 > 60,000 hours (at 25 C° ambient)

### Field Programming #s (PIDs)

4' (Integrated) = BRLN1004

8' (integrated) = BRLN2004

Consult Redwood for all other lengths and non-integrated options

### Options

Integrated Redwood gateway and sensor

Frosted Clear, Frosted White or Prismatic Sided Lens, Indirect Shield

### Available Regions

United States and Canada

### Finish Options

Satin Clear Anodized (std.), Flat Black Powder Coat, Matte White Powder Coat, Custom finishes available

Product Literature / Links (as provided by manufacturer):

[Spec Sheet](#)

[Website](#)



## Birchwood Lighting STELLA LED

Sensor MID#: N/A- Integrated Sensor



### Description

Fascinating in form, eclectic in design, STELLA represents the best of both while providing beautiful illumination and overall efficiency. Decorative Angled Edge or Curved Edge feature attractive cut-away accents in Reveal or Slotted styles. Frosted white, frosted clear or prismatic sided extruded acrylic lens option.

### Dimensions (Nominal)

4', 8', continuous runs and custom sizes available (contact manufacturer)

4' = 1 Channel, 8' = 2 Channel

### Photometry

4' = 600 lm/ft.

Color temp (K) = 3000, 3500, 4000

CRI => 80

3 MacAdam step

L70 > 60,000 hours (at 25°C ambient)

### Field Programming #s (PIDs)

4' (Integrated) = BRLN1004

8' (Integrated) = BRLN2004

Consult Redwood for all other lengths and non-integrated options

### Options

Integrated Redwood gateway and sensor

Frosted Clear, Frosted White or Prismatic Sided Lens

### Available Regions

United States and Canada

### Finish Options

Silver Powder Coat, Flat Black Powder Coat, Matte White Powder Coat, Gloss Red Powder Coat, Custom finishes available

Product Literature / Links (as provided by manufacturer):

[Spec Sheet](#)

[Website](#)



## MaxLite L-Form Linear™ LED Luminaire

Sensor MID#: N/A- Integrated Sensor



### Description

The L-Form Linear LED Luminaire is designed and developed to replace traditional light fixtures for all types of indoor data center, retail, stairwell, garage and car parking applications. Offered in surface mounted and suspended versions, the lightweight and easy-to-install fixtures are designed to offer maximum energy saving, substantially reduced maintenance costs and superior quality.

### Dimensions (Nominal)

4' direct

### Photometry

Lumen output = 3000 lm (750 lm/ft.)

Color temp (K) = 4100K

CRI = >85

L70 @ 50,000 hours

### Field Programming #s (PIDs)

4' = MLLF1700

### Options

Aircraft grade pendant cable suspension system standard

Rigid stem kit option available

Integrated Redwood Sensor

### Available Regions

United States

Canada

Puerto Rico

### Finish Options

White finish

Product Literature / Links (as provided by manufacturer):

[Spec Sheet](#)

[Website](#)



## MHT Lighting CUBE RC Series

Sensor MID#: N/A- Integrated Sensor



### Description

The CUBE RC series is designed for various applications. Housing is formed with an extruded brushed finish aluminum. Lens is durable and low gloss acrylic. Equipped with high diffusion and reflectivity technology, provides high lumen and even light output. The CUBE RC comes assembled with (labor saving) built in Redwood Sensor and Gateway.

### Dimensions (Nominal)

4' and 8' direct  
4' and 8' direct/indirect (80%/20%)  
Continuous runs and custom sizes available (Contact Manufacturer)

### Photometry

Lumen output (4') = 3600 lm  
Lumen output (8') = 7200 lm (2 Channels)  
Color temp (K) = 4000  
CRI = >85  
L70 @ 100,000 hours (TM21 @ 25°C)

### Options

Suspended mount with aircraft cable (standard), ceiling surface mount, 3/8" threaded rod, lay-in ceiling, continuous runs, wall mount

### Available Regions

United States  
Canada  
Puerto Rico



### Finish Options

Custom color available

Product Literature / Links (as provided by manufacturer):

[Spec Sheet](#)

[Website](#)



## Project Frog Lantana Luminaire™

Sensor MID#: N/A – Integrated Sensor



### Description

The unique form and optical design of the Lantana Luminaire™ linear light fixture provides 90% downlight and 10% uplight, utilizing the majority of input energy to illuminate the room while still providing an even ceiling wash, even in surface mount applications. Lantana is one of the most energy efficient LED luminaires on the market, with an efficacy of 137.6 lm/watt.

### Dimensions (Nominal)

6' direct/indirect (90%/10%)

### Photometry

Lumen output = 4200 lm

Color temp (K) = 4100

CRI = 85

LM70 @ 200,000 hours

### Field Programming #s (PIDs)

6' = PFL61700

### Options

Integrated Redwood gateway and sensor

Surface, Unistrut or pendant mounting hardware available

### Available Regions

United States and Canada

projectfrog 

### Finish Options

White

Product Literature / Links (as provided by manufacturer):

[Website](#)



## Richter Lighting Systemkanal HL

Sensor MID#: N/A – Integrated Sensor



**RICHTER**  
lighting technologies

**Finish Options**  
Brushed Aluminum

### Description

The Richter Systemkanal HL is a practical, flexible interpretation of LED lighting. Built from high-quality materials, the lighting channel offers freedom in mounting options as well as an unrivalled quality of light.

### Dimensions (Nominal)

4' & 8' direct

### Photometry

Lumen output = 2700 lm @ 5300K (675 lm/ft.), 2420 lm @ 4100K (605 lm/ft.)  
Color temp (K) = 4000, 5000  
CRI = >80  
LM70 @ 50,000 hours

### Field Programming #s (PIDs)

4' = RTSC4811  
8' = RTSC4821

### Options

Integrated Redwood gateway and sensor  
Standard frosted or micro prism diffuser available

### Available Regions

United States and Canada

Product Literature / Links (as provided by manufacturer):

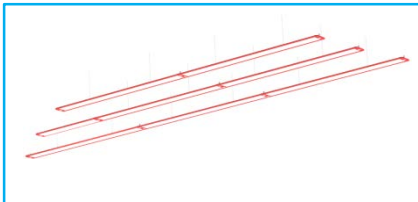
[Spec Sheet](#)

[Website](#)



## SPM Lighting VOLO Series Direct

Sensor MID#: N/A- Integrated Sensor



### Description

VOLO in Italian means 'WING' as this pendant is sleek and aerodynamic with its curves inspired from an Italian race car. The all aluminum body construction provides a sturdy frame with great heat dissipation to ensure LED longevity. UL rated to operate at a maximum of 70W continuous. Available in a variety of colors to meet customer needs.

### Dimensions (Nominal)

4', 8', continuous runs and custom sizes available (contact manufacturer)

4' = 1 Channel, 8' = 2 Channel

### Photometry

Lumen output = 3415 lm (4') @ 4000K

Lumen output = 6830 lm (8') @ 4000K

Color temp(K) = 3500, 4000

CRI=>80

L70@ 50,000 hours

### Field Programming #s (PIDs)

4' = SPLI1700

8' = SPLI1700 (2 sensors)

### Options

Integrated Redwood gateway and sensor

Standard aircraft cable mounting or threaded rod

### Available Regions

United States and Canada

### Finish Options

Matte Silver, White, Blue, Green,  
Red, Yellow, Orange, Gold,  
Custom colors available

Product Literature / Links (as provided by manufacturer):

[Website](#)



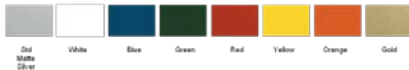


## SPM Lighting VOLO Series 50/50

Sensor MID#: N/A- Integrated Sensor



Extrusion Color Options



### Finish Options

Matte Silver, White, Blue, Green,  
Red, Yellow, Orange, Gold,  
Custom colors available

Product Literature / Links (as provided by manufacturer):

[Website](#)

### Description

Our flagship direct/indirect pendant lamp with its floating illuminating surface, see-through border all the way around, and bright, vibrant color frame option make for a very distinctive look that will stand out in a conference room or open office continuous run.

### Dimensions (Nominal)

4', 8', continuous runs and custom sizes available (contact manufacturer)

Direct / Indirect (50/ 50)

4' = 1 Channel, 8' = 2 Channel

### Photometry

Lumen output (4') = 3670 lm @ 4000K

1940 lm direct / 1730 lm indirect

Lumen output (8') = 7335 lm (8')

3880 lm direct / 3455 lm indirect

Color temp(K) = 3500, 4000

CRI=>80

L70@ 50,000 hours

### Field Programming #s (PIDs)

4' = SPLI1700

8' = SPLI1700 (2 sensors)

### Options

Integrated Redwood gateway and sensor

### Available Regions

United States and Canada





## Down Lights

## Maxlite Down Light

Sensor MID#: SEN-3M1-W-GNEW1500



### Finish Options

White

### Description

Energy -efficient solutions for recessed lighting applications, the four-inch New Construction and Remodel LED Downlight are engineered to make installation in grid and dry wall ceilings a snap. Each recessed fixture is supplied with a performance-leading LED module and white trim ring that installs flush to the ceiling. The airtight-rated fixtures meet air tight requirements for 2.0 cubic feet per minute (CFM) or less air leakage.

### Dimensions (Nominal)

Available in 4" and 6"

New construction and remodel housings available

### Photometry

Lumen output = 934 lm (4")

Lumen output = 1260 lm (6")

Color temp (K) = 3500K

CRI = >80

L70 @ 50,000 hours

### Field Programming #s (PIDs)

4" = MLDL4I50

6" = MLDL6I64

### Available Regions

United States

Canada

Puerto Rico

Product Literature / Links (as provided by manufacturer):

[4" Spec Sheet](#)

[6" Spec Sheet](#)

[Website](#)



## MHT Lighting DL RC Series

Sensor MID#: N/A- Integrated Sensor



### Description

The energy efficient Redwood Ready DL (Down Light) series offers a flush mounted architectural grade fixture that is ideal for a wide variety of settings. The DL series comes with die casted aluminum housing, low gloss frosted acrylic lens and two stainless steel spring clips. The fixture has been designed to be able to share two or three downlight on one Redwood Channel for optimal economic benefit.

### Dimensions (Nominal)

4" (4.5" Opening and 5.5" Round Trim)  
6" (6" Opening and 7" Round Trim)  
8" (7.5" Opening and 8.66" Round Trim)

### Photometry

Lumen output (4") = 1000 lm (3 fixtures per channel)  
Lumen output (6") = 1000 or 1500 lm (2 or 3 fixtures per channel)  
Lumen output (8") = 1500 lm (2 fixtures per channel)  
Color temp (K) = 4000  
CRI = >85  
L70 @ 100,000 hours (TM21 @ 25°C)

### Options

Aircraft cable

### Available Regions

United States  
Canada  
Puerto Rico

### Finish Options

White round trim

Product Literature / Links (as provided by manufacturer):

[Spec Sheet](#)

[Website](#)



## Pathway Coventry Round Down Light

Sensor MID#: SEN-3M1-W-GNEW1500



Available with suspended decorative glass

**PATHWAY®**  
*the Lighting Source*

### Description

Architectural round aperture LED fixtures that are ideal for a variety of spaces where superior color rendering, medium beam distribution and long LED life are desired.

### Dimensions (Nominal)

Available in 4" and 6"

### Photometry

Lumen output = 4"- 1300 lumens, 6"- 1300 lumens  
Color temp (K) = 2700K, 3000K, 3500K, 4000K options available  
CRI = 80  
LM70 @ 50,000 hours

### Field Programming #s (PIDs)

4" =PWRD4170  
6" =PWRD6170

### Options

Beam angles = 20°, 40°, 60°  
Suspended decorative glass  
Hanger bars available  
4" available for downlight sharing up to 2 fixtures per channel  
6" available for downlight sharing up to 2 fixtures per channel

### Available Regions

United States and Canada

### Finish Options

Reflector = Soft Specular Clear and Haze Azlak

Flange = Polished, White painted  
Additional finishes & decorative elements available

Product Literature / Links (as provided by manufacturer):

[4" Spec Sheet](#)

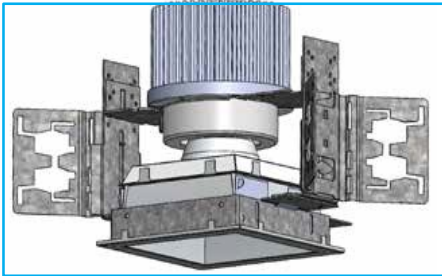
[6" Spec Sheet](#)

[Website](#)



## Pathway Coventry Square Down Light

Sensor MID#: SEN-3M1-W-GNEW1500



### Description

Architectural square aperture LED fixtures that are ideal for a variety of spaces where superior color rendering, medium beam distribution and long LED life are desired.

### Dimensions (Nominal)

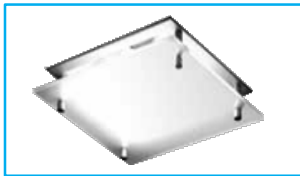
Available in 4"

### Photometry

Lumen output = 1300 lumens  
Color temp (K) = 4000  
CRI = 80  
LM70 @ 50,000 hours

### Field Programming #s (PIDs)

4" =PWSQ4170



Optional suspended decorative lens (IC4)

### Options

Beam angles = 20°, 40°, 60°  
Suspended decorative glass  
Hanger bars available

### Available Regions

United States and Canada

**PATHWAY®**  
*the Lighting Source*

### Finish Options

Reflector = Soft Specular Clear and  
Haze Azlak

Flange = Polished, White painted  
Additional finishes & decorative  
elements available

Product Literature / Links (as provided by manufacturer):

[4" Spec Sheet](#)

[Website](#)





# Accent Fixtures

## MHT Lighting MAGNT8-RC Series

Sensor MID#: N/A- Integrated Sensor



### Description

The MAGNT8 series is designed for linear fluorescent replacement without going above ceiling. Its patent pending flat back magnetic extrusion makes for a quick install. The magnetic tube is designed to operate an under cabinet lighting solution, or retro-fit, without the need for expensive housings. It's been designed to be able to share two tubes in one Redwood channel for optimal economic benefit.

### Dimensions (Nominal)

19" and 42.5" Lengths

### Photometry

Lumen output (19") = 1800 lm each @ 4000K, Frosted Diffuser  
Lumen output (42.5") = 2000 lm each @ 4000K, Frosted Diffuser  
(2 tubes per Redwood Channel)  
Color temp (K) = 4000, 5000  
CRI = >85  
L70 @ 110,000 hours (inside lensed troffer, TM21 @ 25°C)

### Options

Clear or Frosted polycarbonate diffuser

### Available Regions

United States  
Canada  
Puerto Rico

### Finish Options

Aluminum housing and polycarbonate diffuser

Product Literature / Links (as provided by manufacturer):

[Spec Sheet](#)

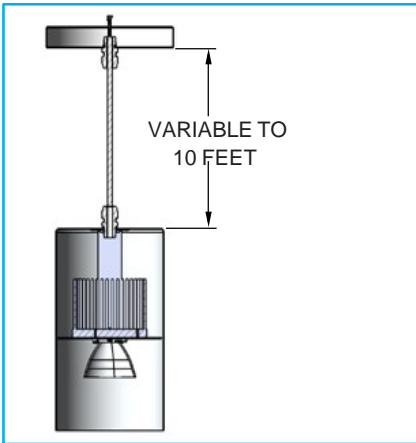
[Website](#)





## Pathway Lighting Coventry Architectural Series

Sensor MID#: SEN-3M1-W-GNEW1500



### Description

Versatile cylinder for pendant, cord, ceiling or wall mounting is ideal for applications where energy saving LED lamps are desired.

### Dimensions (Nominal)

9.5" H x 5.75" D

### Photometry

Lumen output = Consult manufacturer

Color temp (K) = 3500

CRI = 90

LM70 @ 50,000 hours

### Field Programming #s (PIDs)

9.5" = PATH1700

### Options

Ceiling, wall, cord and pendant mounting options available

Cord options = Straight and coiled white and black cords available

Beam angles= 20°, 40°, 60°

### Available Regions

United States and Canada

**PATHWAY®**  
*the Lighting Source*

### Finish Options

Exterior finishes = White, Black, Bronze,  
Metallic Aluminum

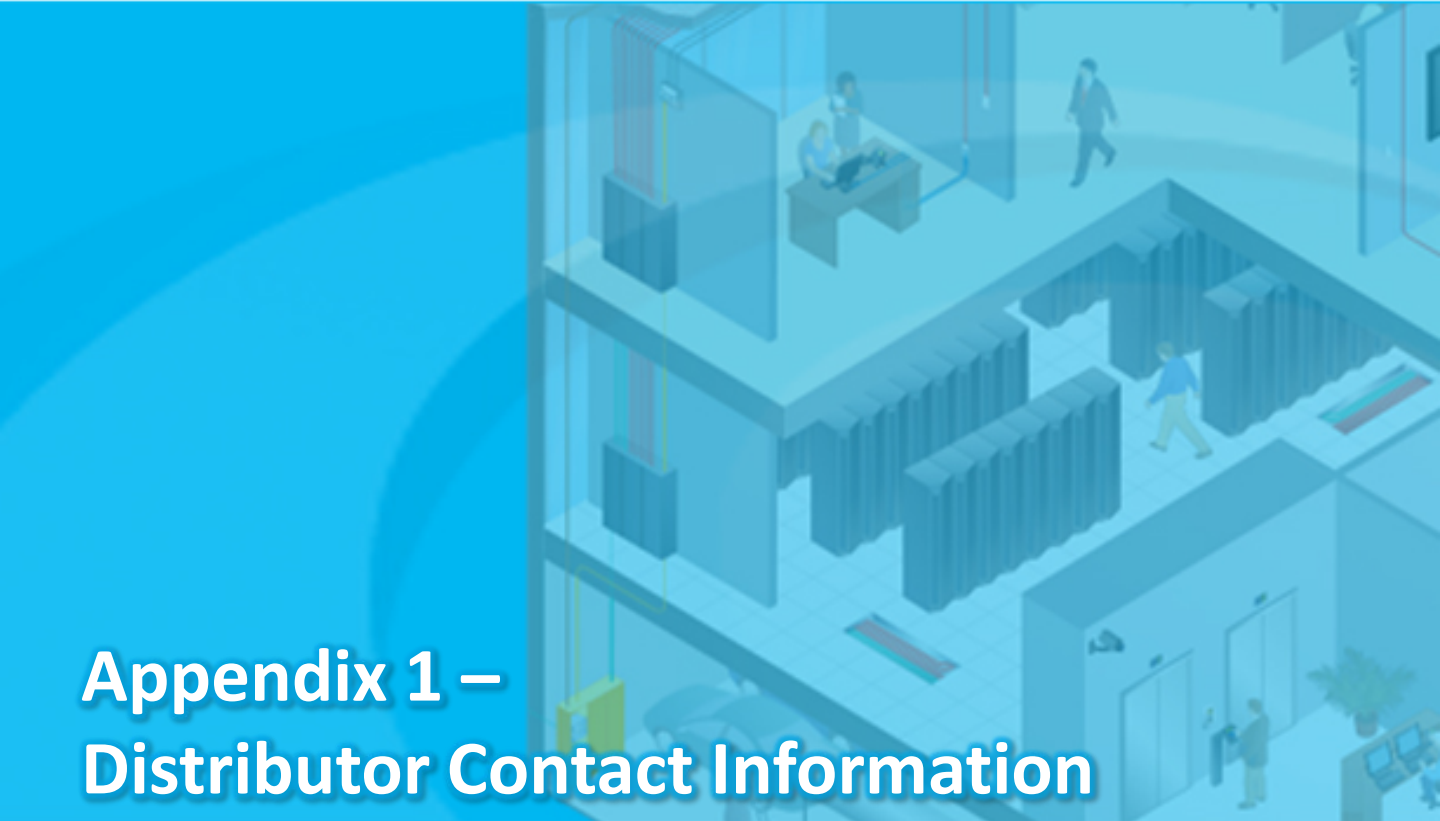
Interior finishes = White, Black, Bronze,  
Metallic Aluminum, White Baffled, Black  
Baffled

Product Literature / Links (as provided by manufacturer):

[Spec Sheet](#)

[Website](#)





# Appendix 1 – Distributor Contact Information



2301 Patriot Blvd.  
Glenview, IL 60026  
[www.anixter.com](http://www.anixter.com)

**Anixter Enterprise Representative**

1-800-ANIXTER

[Online Contact Form](#)

*\* Denotes primary contact*

[www.commscope.com](http://www.commscope.com)

Visit our website or contact your local CommScope representative for more information.

© 2015 CommScope, Inc. All rights reserved.

All trademarks identified by ® or ™ are registered trademarks or trademarks, respectively, of CommScope, Inc.

This document is for planning purposes only and is not intended to modify or supplement any specifications or warranties relating to CommScope products or services.