



## COMMSCOPE

Through our strong global partnerships and alliances with manufacturers such as CommScope, we are able to present you with the following offering to meet your perimeter security power and connectivity needs.

### Powered Fiber Cable System

CommScope's Powered Fiber Cable System (PFCS) is a complete rack-to-device solution for powering and communicating with HD cameras, Wi-Fi hotspots, small cells and various network devices. When coupled with PoE extenders, PFCS solves power and communications challenges including primary, secondary and tertiary electrical protection as well as managing power by automatically correcting for voltage drop over distance.

### CHALLENGE SOLVERS

- **Power availability to remote locations;** provides unlimited flexibility for placing surveillance cameras in desired locations to maximize security protection regardless of distance from the power source
  - PFCS provides an alternative to the use of AC to power perimeter HD cameras, a process that typically requires significant engineering expertise and custom design. With 30 times the typical PoE distance, PFCS:
    - Reduces landlord and utility negotiations
    - Eliminates local power sources
    - Achieves a higher reliability by leveraging a centrally located UPS
- **Safety, protection, EMI immunity for tough environments;** designed and built to withstand extreme temperatures and weather conditions
  - Patented technology provides customers an innovative solution for power management and media conversion, all integrated and neatly packaged in the PoE extender. The PoE extender comes with primary, secondary and tertiary electrical protection and allows for automatic power correction for voltage drop that often occurs over extended distances.
- **Speed of deployment**
  - An end-to-end and off the shelf solution, PFCS makes deployment quicker and more cost-effective by eliminating the need to run additional power lines.

### THE ANIXTER APPROACH

A layered approach to physical security provides a solution that focuses on the key objectives to protect the site from the vulnerabilities outside the facility to inside the secured building.

#### Perimeter defense

Establish a physical boundary at the property edge to deter external threats.

### THE COMMSCOPE SOLUTION

| CABLE TYPE     | CABLE TYPE  | OPTIONS   |
|----------------|---|---|
| Indoor/Outdoor | 12 AWG Copper<br>16 AWG Copper<br>Multimode Fiber<br>Singlemode Fiber | Hybrid, Fiber/Copper Cable<br>PoE Extender<br>Cable Management<br>Power Supply & Optional UPS |



PoE extender and mounting plate



Hybrid Fiber/Copper Cable

## COMMSCOPE®

### WHAT WE HEAR

Challenges from the various security stakeholders:



**SAFEGUARDING** property, facilities and infrastructure



**POWER AVAILABILITY** to remote locations



**SAFETY AND PROTECTION** of people and assets



**RELIABILITY** in extreme environmental conditions



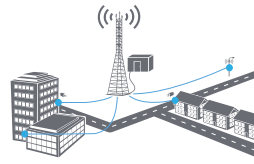
**SPEED** of deployment

## COMMSCOPE PFCS FEATURES

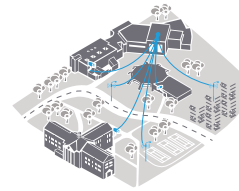
### Unparalleled safety and protection in tough environments

- Carrier-grade electrical protection, SELV and NEC Class II compliance
- Built-in safety and overload protection
- Optical fiber immunity to EMI; meets FCC regulations
- Extreme operating temperature -40F to 149F, -40C to 65C

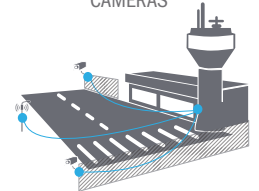
CELL SITE BASE STATION



CAMPUS ENVIRONMENT

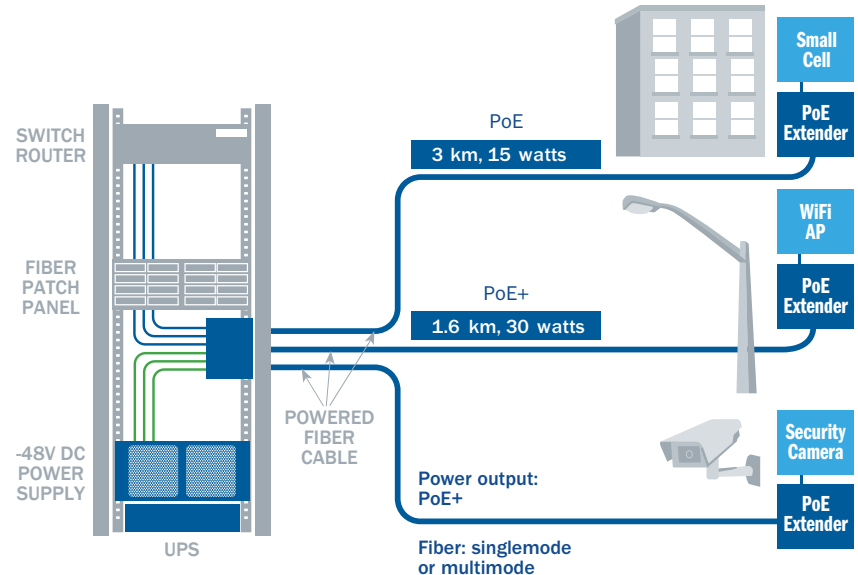


AIRPORT SURVEILLANCE CAMERAS



### Designed for high efficiency

- PFCS runs 30 times the distance of typical PoE
- PFCS cable is designed for easy handling and installation and requires no special tooling
- One cable type accommodates many options: up to 12 optical fibers, 12 AWG or 16AWG, SMF or MMF
- Outdoor and riser/LSZH indoor/outdoor rated versions
- PoE extender includes media conversion module, circuit protection electronics and electrical power management



CommScope's vast portfolio of network infrastructure includes some of the world's most robust and innovative copper and fiber optic solutions. The Powered Fiber Cable System makes it easier for building owners and real estate managers to deploy surveillance capabilities for heightened security.

FROM PUBLIC SPACES TO ENTERPRISE BUILDINGS ANIXTER CAN STRUCTURE PHYSICAL SECURITY SOLUTIONS, SERVICES AND DELIVERY AROUND YOUR TECHNICAL REQUIREMENTS AND BUSINESS NEEDS.

### CONFIGURE

We help you discover and map your specific needs to the best solution.

- Fiber type
- PoE extender
- Power management system
- Cable management unit

### BUNDLE

Your validated, preconfigured solutions are packaged and site ready.

- HD cameras
- Wi-Fi access points
- Small cells
- UPS solutions

### DEPLOY

Controlled, repeatable solutions are delivered on time and under budget.

- Custom packaging and labeling
- Time-sensitive delivery options
- Staged project shipping
- Tailored last-mile delivery

**FOR MORE DETAILS VISIT ANIXTER.COM**

**About Anixter:** [anixter.com/aboutus](http://anixter.com/aboutus)

**Legal Statement:** [anixter.com/legalstatement](http://anixter.com/legalstatement)

At Anixter, we enable the connected world. By building, connecting, protecting and powering valuable assets and critical infrastructures, we help to sustain and grow businesses and communities worldwide. We accomplish this by offering full-line solutions, technical intelligence, supply chain expertise and an unmatched global distribution network.

1.800.ANIXTER | [anixter.com](http://anixter.com)

