

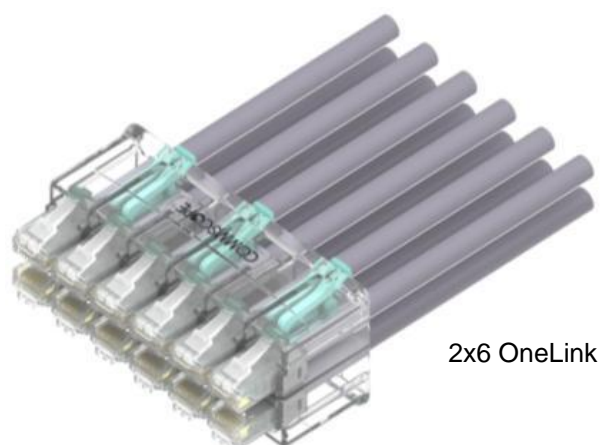
SYSTIMAX® InstaPATCH® OneLink Patch Cord Organizer

Effective January 29, 2015, the SYSTIMAX InstaPATCH Cu patch cord organizer is now the InstaPATCH® OneLink. Legacy SwitchPack designs are discontinued.

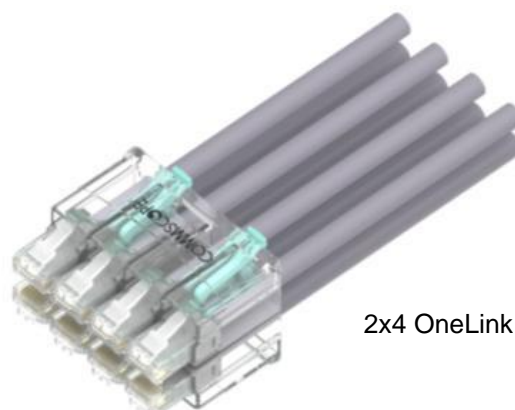
InstaPATCH OneLink is equipped on all patch cord organizer configurations in the InstaPATCH Cu product line.

Product features:

- Newest generation of SYSTIMAX patch cord organizer featuring increased row-to-row flexibility
- Supports single-handed operations
- 2x4 and 2x6 configurations allow seamless integration with different switch configurations
- 2x4 and 2x6 release tools facilitate one touch release of all cords at once
- Individual release tool allows removal of one cord at a time



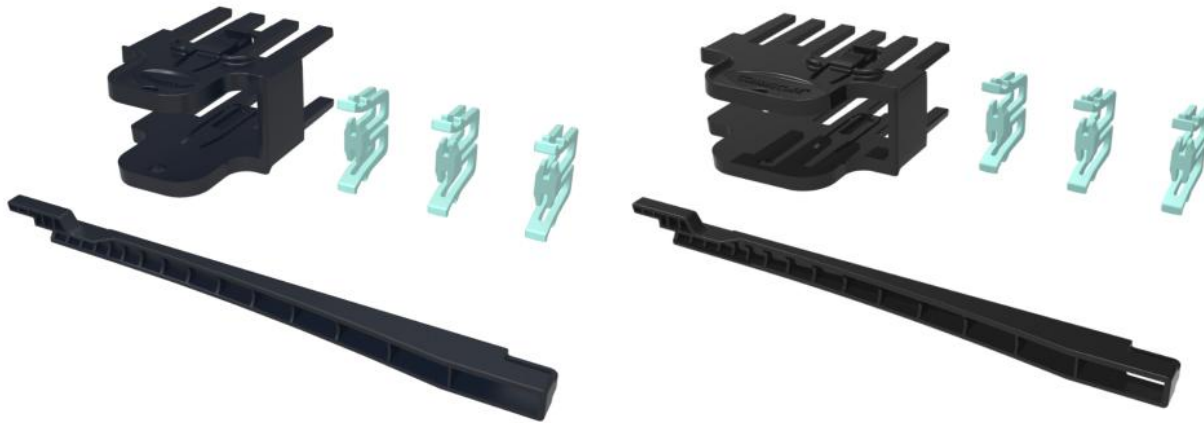
2x6 OneLink



2x4 OneLink

Removal tool is required for the disengagement of one or all cords from the OneLink housing.

Material ID	Description	Content
760183103	OneLink-TOOL-KIT-2x4	One 2x4 removal tool One single cord removal tool Three clamps
760183111	OneLink-TOOL- KIT-2x6	One 2x6 removal tool One single cord removal tool Three clamps



760183103
OneLink-TOOL-KIT-2X4

760183111
OneLink-TOOL-KIT-2X6

OneLink tool kit is a removal tool that needs to be purchased separately.

For a limited time, OneLink tool kit sample(s) will be included in OneLink assemblies ordered using the 2015 new InstaPATCH Cu configurator. Eligible configurations include:

- C*S**
- C*T**
- C**S*
- C**T*

http://www.commscope.com/catalog/enterprise/product_narrow_instaPatch.aspx?id=170

http://www.commscope.com/catalog/enterprise/product_details.aspx?id=3865

http://www.commscope.com/catalog/enterprise/product_details.aspx?id=3866