

CORNING

# Cat.6<sub>A</sub> Unshielded

Copper Structured Cabling System Hardware

RJ45 Cat.6<sub>A</sub> Jacks UTP (Hardware)

Copper Patch Cords

Copper Patch Panels

Faceplates & Wall Outlets

Copper Cable

# RJ45 Cat.6<sub>A</sub> UTP Jacks

Our Cat.6<sub>A</sub> copper interconnect products work together to provide an easy-to-use solution for deploying high-speed connections throughout a building. The RJ45 jack is a key component in this system. These RJ45 jacks have been certified by an independent test laboratory to hardware certification. Each jack component is able to terminate to any certified Cat.6<sub>A</sub> cable and patch cord combination to achieve full channel performance. The jack's unique three-cable entry points help make installation simple. The traditional one-click design enables an easy, tool-less termination on unshielded twisted pair cables, meeting industry performance standards.



Feature	Benefit
Tool-less jack	Easy and quick to install. Fast, reliable connection. All eight copper conductors are wired in a single operation. Quality of connection by design: Just listen for the click.
Three cable entry points	Easier cable management. More space and flexibility to ensure the cable minimum bend radius is not compromised. Enables a wide range of cable routing options. Easy to use in tight spaces. Just one product for all applications.
Reusable	If a wiring mistake is made, there is no need to use a new jack, which means virtually no wasted inventory.
No untwisting of pairs before termination	Minimised stripping length so that pairs are kept together. Easy fitting of the pairs without threading through a wire guide.
Clip-in mounting	RJ45 modular jack design can fit many other accessories on the market using the standard clip-in mounting.
Accepts solid and stranded conductors	Compatible with many cables on the market and enables "jack-to-plug" cables to be manufactured using stranded conductors (for use in open-office architectures).
Integral shutter	Increased dust protection, especially during installation or in a dirty environment. No additional shuttering required on faceplates.

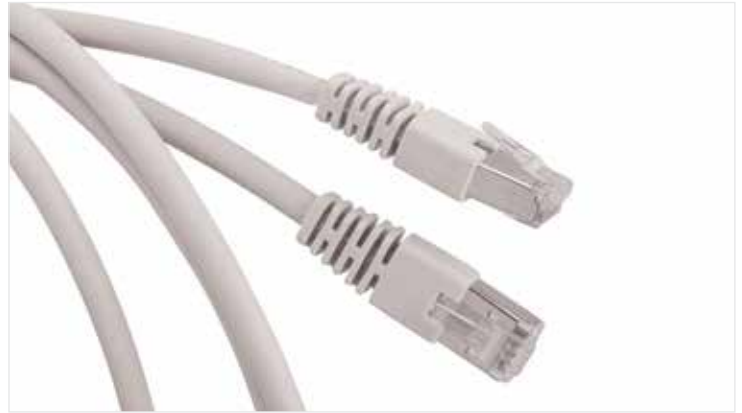
Specifications	
<b>Standards compliance</b> Hardware performance	ANSI/TIA/568-C.2:2009 ISO/IEC 11801 Edition 2.2:2011 (Edition 2.2) ISO/IEC 60603-7-51:2010 EN 50173-1:2011
<b>Electrical performance</b> PoE Compliance Operating voltage Lead-through resistance Insulation resistance	IEC 60512-99-001:2012(Ed. 1.0) < 75 VDC < 200 mΩ > 500 MΩ
<b>Environmental compliance</b> Operating temperature	-10°C to 60°C (14°F to 140°F)
<b>Mechanical specifications</b> Conductor diameter  Maximum diameter of wire insulation Protection contacts	Solid wires: 0.50 to 0.65 mm (AWG 22-24) Stranded wires: 7 x 0.15 to 0.20 mm  1.6 mm 1.27 μm in contact zone

## RJ45 Jack Ordering Information

Part Number	Description	Legacy Part Number
XF500006457	RJ45 Cat.6 <sub>A</sub> UTP Jack, white (bag of 8), V500U	VOL-OCK6A-UN8
XF500006440	RJ45 Cat.6 <sub>A</sub> UTP Jack, white (bulk pack of 480), V500U	VOL-OCK6A-UNV
XF500006358	RJ45 Cat.6 <sub>A</sub> UTP Jack, blue (bag of 8), V500UBL	VOL-K6AUN-BL8
XF500006366	RJ45 Cat.6 <sub>A</sub> UTP Jack, green (bag of 8), V500UGN	VOL-K6AUN-G8
XF500006374	RJ45 Cat.6 <sub>A</sub> UTP Jack, red (bag of 8), V500URD	VOL-K6AUN-R8
XF500006382	RJ45 Cat.6 <sub>A</sub> UTP Jack, yellow (bag of 8), V500UYL	VOL-K6AUN-Y8
XF500006390	RJ45 Cat.6 <sub>A</sub> UTP Jack, black (bag of 8), V500UBK	VOL-K6AUN-BK8

# Cat.6<sub>A</sub> UTP Copper Patch Cords

Hardware-compliant copper patch cords enable you to complete your network to Cat.6<sub>A</sub> according to ANSI/TIA 568-C.2 and Class EA ISO 11801/EN 50173-1. They are constructed with unshielded twisted-pair (UTP) stranded cable, low-smoke, zero-halogen (LSZH™) rated jacket and protected latch to ensure durability. These patch cords are available in a variety of lengths and colours for easy cable management and administration.



Feature	Benefit
“Snagless” boot protects latch	Better mechanical protection helps prevent breaks so the cords last longer
Various lengths and colours	Options to complete systems to your requirements
LSZH cable	Meets flame requirements for low flammability and low toxicity

Specifications	
<b>Standards compliance</b>	ANSI/TIA 568-C.2 ISO/IEC 11801 Edition 2.2 EN 50173-1
<b>Electrical performance</b> Cable impedance Insulation Resistance (500 V) Test Voltage (DC, 1 min) NPV (nominal) Current rating Voltage rating	100 Ω ≥ 500 M Ω/km 100-500 V 78% 1.5A (maximum) 75 V
<b>Environmental compliance</b> Fire performance Operating temperature Transport and storage temperature	IEC 60332-1, IEC 61034-2, IEC 60754-1, IEC 60754-2 20°C to 60°C 0°C to 50°C
<b>Mechanical specifications</b> Cable diameter (OD) Copper diameter Minimum bend radius	5.50 +/- 0.30 (mm) Wire gauge AWG 24 Static bending: 4 x OD Dynamic bending: 8 x OD

## Cat.6<sub>A</sub> Patch Cords (LSZH™, 24 AWG UTP)

Part Number	Colour	Length (metres)	Legacy Part Number
UU008168252	Grey	0.5	VOL-6AUL-L0.5-G
UU001126729	Grey	1	VOL-6AUL-L1-G
UU001126505	Grey	2	VOL-6AUL-L2-G
UU001126117	Grey	3	VOL-6AUL-L3-G
UU001095270	Grey	5	VOL-6AUL-L5-G
UU008049478	Grey	10	VOL-6AUL-L10-G
UU008049486	Grey	15	VOL-6AUL-L15-G
UU008049494	Grey	20	VOL-6AUL-L20-G
UU008072769	Turquoise	0.5	VOL-6AUL-L0.5-T
UU001074879	Turquoise	1	VOL-6AUL-L1-T
UU001075009	Turquoise	2	VOL-6AUL-L2-T
UU001075413	Turquoise	3	VOL-6AUL-L3-T
UU001075223	Turquoise	5	VOL-6AUL-L5-T
UU001075686	Turquoise	10	VOL-6AUL-L10-T
UU008049874	Turquoise	15	VOL-6AUL-L15-T
UU008049502	Turquoise	20	VOL-6AUL-L20-T

Additional lengths and colours are available. Please consult your local Corning representative or alternatively Corning Customer Care at 00800 2676 4641 or email [cc.emea@corning.com](mailto:cc.emea@corning.com)

# Patch Panels

Copper patch panels are modular and provide an aesthetically pleasing solution for housing modular jacks. These lightweight, aluminium panels are compatible with RJ45 jacks as well as typical industry-accepted modular jacks.

The classic version includes a cable-strain-relief tray and earth-connection point. The Eco panels are a simple version, without an earth-connection point, to use with racks with integral cable management. The panels include screws, cage nuts, and cable ties. Port blanking and coloured identification caps are available. The range includes a patch cord management panel with five management rings.



## Copper Patch Panels Ordering Information

Part Number	Description	Legacy Part Number
UU001622875	16 ports, 19 in x 1U x 100 mm, black aluminium	VOL-PPCB-F16-K
UU001622941	16 ports, 19 in x 1U x 100 mm, black aluminium with locking system	VO-LPPC-BV-16K
UU001622917	16 ports, 19 in x 1U x 100 mm, brushed aluminium	VO-LPPC-AF-16K
UU001622859	16 ports, 19 in x 1U x 11 mm, black aluminium, Eco version, UTP only	VOL-PPUD-F16-K
UU001622883	24 ports, 19 in x 1U x 100 mm, black aluminium	VOL-PPCB-F24-K
UU001622958	24 ports, 19 in x 1U x 100 mm, black aluminium with locking system	VOL-PPCB-V24-K
UU001622701	24 ports, 19 in x 1U x 100 mm, brushed aluminium	VOL-PPCA-F24-K
UU001622867	24 ports, 19 in x 1U x 11 mm, black aluminium, Eco version, UTP only	VOL-PPUD-F24-K
UU001622891	32 ports, 19 in x 2U x 118 mm, black aluminium	VOL-PPCB-F32-K
UU001622925	32 ports, 19 in x 2U x 118 mm, brushed aluminium	VOL-PPCA-F32-K
UU001622966	32 ports, 19 in x 1U x 118 mm, black aluminium, high density	VOL-PPCB-HD-F32K
UU001622909	48 ports, 19 in x 2U x 118 mm, black aluminium	VOL-PPCB-F48-K
UU001622933	48 ports, 19 in x 2U x 118 mm, brushed aluminium	VOL-PPCA-F48-K
DE620045786	24 ports, 19 in x 1U x 171 mm, angled, black aluminium (91 mm back depth, 80 mm front depth)	VOL-PPCB-A24K
FQ100022240	19-in 1U Patch Cord Management Panel with five plastic rings, black steel	VOL-P334-10-AA
80611020399	Blank Port Insert, white	VOL-0300
80611020738	Blank Port Insert, black	VOL-0300BK
FQ100020616	Blue Port Cap for RJ45 patch panel (bag of 8)	VOL-PCC-B
FQ100020624	Yellow Port Cap for RJ45 patch panel (bag of 8)	VOL-PCC-Y
FQ100020632	Red Port Cap for RJ45 patch panel (bag of 8)	VOL-PCCR
FQ100020640	Green Port Cap for RJ45 patch panel (bag of 8)	VOL-PCC-G
XS003873642	Blue Port Cap and Label Holder for RJ45 patch panel (bag of 8)	VOL-PEC-B
XS003873691	Red Port Cap and Label Holder for RJ45 patch panel (bag of 8)	VOL-PEC-R
XS003873709	Yellow Port Cap and Label Holder for RJ45 patch panel (bag of 8)	VOL-PEC-Y
XS003873717	Green Port Cap and Label Holder for RJ45 patch panel (bag of 8)	VOL-PEC-G

# Faceplates and Outlets

Faceplates are compatible with most electrical wall boxes and are available in 2-port and 4-port versions. These faceplates fit common European dimensions and are compatible with RJ45 modular jacks. Port icons for port identification as well as label windows are included in some products.



## Faceplate Ordering Information

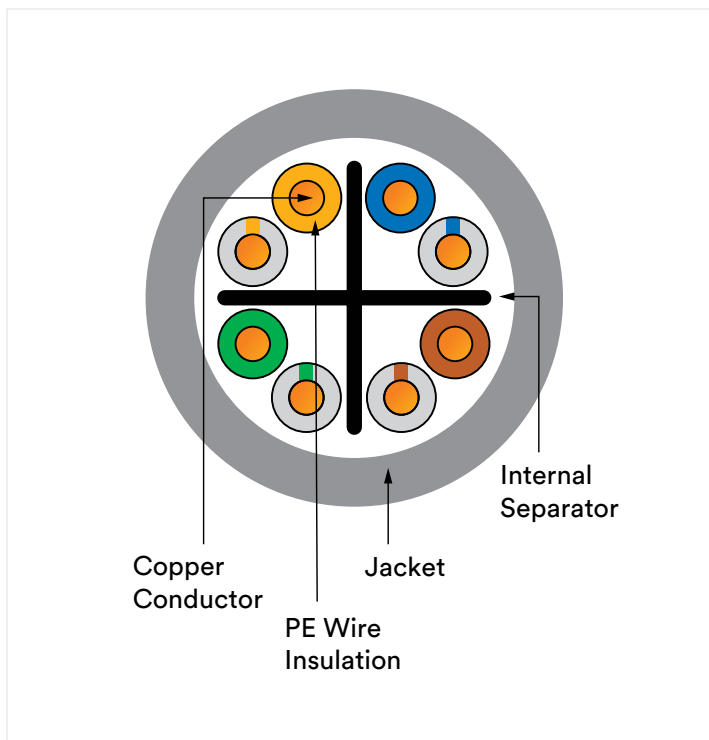
Part Number	Description	Legacy Part Number
XF003849205	RJ45 Faceplate Single-Gang UK, 1 port, 86 x 86 mm, white	VOLFPUK-1K
XF003849213	RJ45 Faceplate Single-Gang UK, 2 port, 86 x 86 mm, white	VOLFPUK-2K
FQ100081360	Modular Faceplate for one RJ45 connector, 45 x 45 mm, white	FP4MF1KW
FQ100081378	Modular Faceplate for two RJ45 connectors, 45 x 45 mm, white	FP4MF2KW
DE620045539	Modular Faceplate for one RJ45 connector, 50 x 50 mm, white	60-516-10425
DE620045547	Modular Faceplate for two RJ45 connectors, 50 x 50 mm, white	60-516-10525
FQ100031001	Angled Faceplate for two RJ45 connectors, 45 x 45 mm, white	FP4MF1KI
FQ100031019	Angled Faceplate for one RJ45 connector, 45 x 45 mm, white	FP4MF2KI
FQ100079778	Modular Faceplate for two RJ45 connectors, 22.5 x 45 mm, white	FP4MF2K
FQ100078648	Modular Faceplate for one-click 2 RJ45 jack, 22.5 x 45 mm, white	FP2MF1K
FQ100084521	RJ45 ECO Front Faceplate 45 x 45 mm, 1 port	FP2MF1K
UU003115423	LJ6C Adapter	VOL-LJ6C-A-1K
UU003115449	Euro-Angled Adapter	VOL-EF-A-1K



# Copper Cable

Our four-pair copper cable is high performing and compliant with IEC 61156-5:2013 (ed. 2.1) and EN 50288-10-1: 2012.

The Cat.6<sub>A</sub> cable is U/UTP with an integral cross separator structure to enhance long-term performance and reduce crushing risk at cable anchorage points. This cable has a discontinuous foil tape wrapping, to minimise alien cross-talk (ANEXT) between cables. The cables are easy to install with sheath-length marking, providing convenient clearly identifiable cable and link lengths. The cable listed below is green. Other colours are available on request.



Copper Cable Specifications (Cat. 6 <sub>A</sub> UUTP 24 AWG)	
<b>Application</b>	IEEE 802.3an: 1000BASE-T; 100BASE-TX; 10BASE-T IEEE 802.3af – PoE; IEEE 802.3at - PoE+ 10 Gigabit Ethernet
<b>Typical properties</b>	
Conductor diameter	AWG 24
Insulation diameter	Min: Pe 0.90 mm
Separator	Nonmetallic cross separator
Cable assemblies	1 x 4 pairs
Sheath Material	LSZH™ or PVC
Weight	Max: 33 kg/km
<b>Mechanical features</b>	
Cable outer diameter	Max: 5.7 mm
<b>Bending radius</b>	
Dynamic (installation):	8 x outer diameter
Static (installed):	4 x outer diameter
<b>Temperature range:</b>	
In service:	-20°C to +60°C
Installation/transport/storage	0°C to +50°C
Max. pulling tension	98N
<b>Electrical features (@ 20°C ± 5°C)</b>	
DC resistance (max)	9.5Ω/100 m @ 20°C
Resistance unbalance (max)	2% @ 20°C
Insulation resistance (500 V)	5000 MΩ.km @ 20°C
Mutual capacitance (nominal)	No requirement specified
Test voltage (DC, min)	1 kV/1 min
Capacitance unbalance max (pair to ground)	160 pF/100 m @ 1 kHz
NVP (nominal)	66%
<b>Directive/Standard</b>	
Cable	IEC 61156-5
Cabling system standard	ISO 11801 2. ed/EN 50173-1/TIA 568-C.2
Directive	
ROHS	2011/65/EU (RoHS2)
LVD	LVD 2006/95/EC
LSZH	
Smoke	EN/IEC 61034-2
Gas/toxicity	IEC 60754-2/IEC 60754-1

## Copper Cable Ordering Information

Product Number	Description	CPR Rating	Colour	Length
UU009189521	Cat.6 <sub>A</sub> UUTP LSZH 4 Pair 24AWG, VOL6UP4500	B2ca	Green	500 m
UU009161595	Cat.6 <sub>A</sub> UUTP LSZH 4 Pairs 24AWG, VOL6UP4500	Cca	Green	500 m

Additional CPR classes, lengths, and colours of cable available upon request. Please consult your local Corning representative or alternatively Corning Customer Care at 00800 2676 4641 or email [cc.emea@corning.com](mailto:cc.emea@corning.com)



CORNING

Corning Optical Communications GmbH & Co. KG • Leipziger Strasse 121 • 10117 Berlin, GERMANY  
+00 800 2676 4641 • FAX: +49 30 5303 2335 • [www.corning.com/opcomm/emea](http://www.corning.com/opcomm/emea)

Corning Optical Communications reserves the right to improve, enhance, and modify the features and specifications of Corning Optical Communications products without prior notification. A complete listing of the trademarks of Corning Optical Communications is available at [www.corning.com/opcomm/trademarks](http://www.corning.com/opcomm/trademarks). All other trademarks are the properties of their respective owners. Corning Optical Communications is ISO 9001 certified. © 2019 Corning Optical Communications. All rights reserved. CRR-1161-BEN / September 2019