

CORNING

Cat.5e Unshielded

Copper Structured Cabling System

RJ45 Cat.5e Jacks UTP
Copper Patch Cords
Copper Patch Panels
Faceplates & Wall Outlets
Copper Cable

RJ45 Cat.5e UTP Jacks

Our Cat.5e copper interconnect products work together to provide an easy-to-use solution for deploying high-speed connections throughout a building. The RJ45 jack is a key component in this system.

The jack's two cable entry points help make installation simple. The traditional one-click design enables an easy, tool-less termination on cables, meeting industry performance standards.



Feature	Benefit
Tool-less jack	Easy and quick to install. Fast, reliable connection. All eight copper conductors are wired in a single operation. Quality of connection by design: Just listen for the click.
Two cable entry points	Easier cable management. More space and flexibility to ensure the cable minimum bend radius is not compromised. Enables a cable routing options. Easy to use in tight spaces. Just one product for many applications.
Reusable	If a wiring mistake is made, there is no need to use a new jack, which means virtually no wasted inventory.
Clip-in mounting	RJ45 modular jack design can fit many other accessories on the market using the standard clip-in mounting.
Accepts solid and stranded conductors	Compatible with many cables on the market and enables "jack-to-plug" cables to be manufactured using stranded conductors (for use in open-office architectures).
Integral shutter	Increased dust protection, especially during installation or in a dirty environment. No additional shuttering required on faceplates.

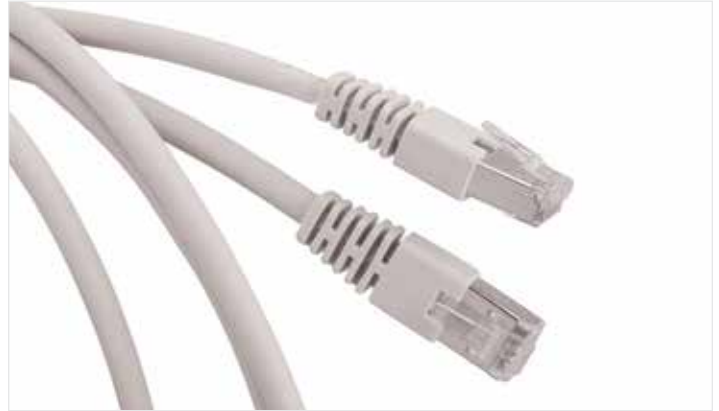
Specifications	
Standards compliance	Use in permanent links with dedicated cable types results in compliance to Cat.5e requirements for ISO 11801:2011 or EN 50173-1:2011 and TIA 568-C.2:2009
Electrical performance Operating voltage Lead-through resistance Insulation resistance	< 75 VDC < 200 mΩ > 500 MΩ
Environmental compliance Operating temperature	-10°C to 60°C (14°F to 140°F)
Mechanical specifications Conductor diameter Max. diameter of wire insulation Protection contacts	Solid wires: 0.50 to 0.65 mm (AWG 22-24) Stranded wires: 7 x 0.15 to 2.0 mm 1.6 mm 0.5 μm in contact zone

RJ45 Jack Ordering Information

Part Number	Description	Legacy Part Number
FQ100029302	RJ45 Cat. 5e UTP Jack, white (bag of 8), E100UWH	OCK5E-U8
FQ100020723	RJ45 Cat. 5e UTP Jack, white (bulk pack of 480), E100U	OCK5E-UV
FQ100027132	RJ45 Cat. 5e UTP Jack, blue (bag of 8), E100UBL	OCK5E-U-BL8
FQ100027157	RJ45 Cat. 5e UTP Jack, red (bag of 8), E100URD	OCK5E-U-R8
FQ100027165	RJ45 Cat. 5e UTP Jack, yellow (bag of 8), E100UYL	OCK5E-U-Y8
FQ100027173	RJ45 Cat. 5e UTP Jack, black (bag of 8), E100UBL	OCK5E-U-BK8

Cat.5e Copper Patch Cords

Hardware-compliant copper patch cords help enable you to complete your network to Cat.5e according to Cat.5e requirements. They are constructed with UTP stranded cable, LSZH™-rated and have PVC jackets and protected latches to ensure durability. These patch cords are available in a variety of lengths and colours for easy cable management and administration.



Feature	Benefit
“Snagless” boot protects latch	Better mechanical protection helps prevent breaks so the cords last longer
Various lengths and colours	Options to complete systems to your requirements
Low-smoke-zero-halogen (LSZH) cable	Meets flame requirements for low flammability and low toxicity

Specifications	
Standards compliance	ANSI/TIA 568-C.2 ISO/IEC 11801 Edition 2.2 EN 50173-1
Electrical performance Cable impedance Insulation resistance (500 V) Test voltage (DC, 1 min) NPV (nominal) Current rating Voltage rating	100 Ω ≥ 500 M Ω/km 100-500 V 78% 1.5A (maximum) 75 V
Environmental compliance Fire performance Operating temperature Transport and storage temperature	IEC 60332-1, IEC 61034-2, IEC 60754-1, IEC 60754-2 20°C to 60°C 0°C to 50°C
Mechanical specifications Cable diameter (OD) Copper diameter Minimum bend radius	5.50 ± 0.30 (mm) Wire gauge AWG 26 Static bending: 4x OD Dynamic bending: 8x OD

Cat.5e Copper Patch Cords (LSZH™, 26 AWG, UTP)

Part Number	Colour	Length (metres)	Legacy Part Number
UU008167973	Grey	0.5	VOL-5EUDL-L0.5-G
UU008073973	Grey	1	VOL-5EUDL-L1-G
UU008073981	Grey	2	VOL-5EUDL-L2-G
UU008073999	Grey	3	VOL-5EUDL-L3-G
UU008074005	Grey	5	VOL-5EUDL-L5-G
FQ100071627	Grey	10	VOL-5EUL-L10-G
UU008167999	Grey	15	VOL-5EUL-L15-G
UU008168005	Grey	20	VOL-5EUL-L20-G

Additional lengths and colours are available. Please consult your local Corning representative or alternatively Corning Customer Care at 00800 2676 4641 or email cc.emea@corning.com

Patch Panels

Copper patch panels are modular and provide an aesthetically pleasing solution for housing modular jacks. These lightweight, aluminium panels are compatible with RJ45 jacks as well as typical industry-accepted modular jacks.

The classic version includes a cable-strain-relief tray and earth-connection point. The Eco panels are a simple version, without an earth-connection point, to use with racks with integral cable management. The panels include screws, cage nuts, and cable ties. Port blanking and coloured identification caps are available. The range includes a patch cord management panel with five management rings.



Copper Patch Panels Ordering Information

Part Number	Description	Legacy Part Number
UU001622875	16 ports, 19 in x 1U x 100 mm, black aluminium	VOL-PPCB-F16-K
UU001622941	16 ports, 19 in x 1U x 100 mm, black aluminium with locking system	VO-LPPC-BV-16K
UU001622917	16 ports, 19 in x 1U x 100 mm, brushed aluminium	VO-LPPC-AF-16K
UU001622859	16 ports, 19 in x 1U x 11 mm, black aluminium, Eco version, UTP only	VOL-PPUD-F16-K
UU001622883	24 ports, 19 in x 1U x 100 mm, black aluminium	VOL-PPCB-F24-K
UU001622958	24 ports, 19 in x 1U x 100 mm, black aluminium with locking system	VOL-PPCB-V24-K
UU001622701	24 ports, 19 in x 1U x 100 mm, brushed aluminium	VOL-PPCA-F24-K
UU001622867	24 ports, 19 in x 1U x 11 mm, black aluminium, Eco version, UTP only	VOL-PPUD-F24-K
UU001622891	32 ports, 19 in x 2U x 118 mm, black aluminium	VOL-PPCB-F32-K
UU001622925	32 ports, 19 in x 2U x 118 mm, brushed aluminium	VOL-PPCA-F32-K
UU001622966	32 ports, 19 in x 1U x 118 mm, black aluminium, high density	VOL-PPCB-HD-F32K
UU001622909	48 ports, 19 in x 2U x 118 mm, black aluminium	VOL-PPCB-F48-K
UU001622933	48 ports, 19 in x 2U x 118 mm, brushed aluminium	VOL-PPCA-F48-K
DE620045786	24 ports, 19 in x 1U x 171 mm, angled, black aluminium (91 mm back depth, 80 mm front depth)	VOL -PPCB-A24K
FQ100022240	19-in 1U patch cord management panel with five plastic rings, black steel	VOL-P334-10-AA
80611020399	Blank Port Insert, white	VOL-0300
80611020738	Blank Port Insert, black	VOL-0300BK
FQ100020616	Blue Port Cap for RJ45 patch panel (bag of 8)	VOL-PCC-B
FQ100020624	Yellow Port Cap for RJ45 patch panel (bag of 8)	VOL-PCC-Y
FQ100020632	Red Port Cap for RJ45 patch panel (bag of 8)	VOL-PCCR
FQ100020640	Green Port Cap for RJ45 patch panel (bag of 8)	VOL-PCC-G
XS003873642	Blue Port Cap and Label Holder for RJ45 patch panel (bag of 8)	VOL-PEC-B
XS003873691	Red Port Cap and Label Holder for RJ45 patch panel (bag of 8)	VOL-PEC-R
XS003873709	Yellow Port Cap and Label Holder for RJ45 patch panel (bag of 8)	VOL-PEC-Y
XS003873717	Green Port Cap and Label Holder for RJ45 patch panel (bag of 8)	VOL-PEC-G

Faceplates and Outlets

Faceplates are compatible with most electrical wall boxes and are available in 2-port and 4-port versions. These faceplates fit common European dimensions and are compatible with RJ45 modular jacks. Port icons for port identification as well as label windows are included in some products.

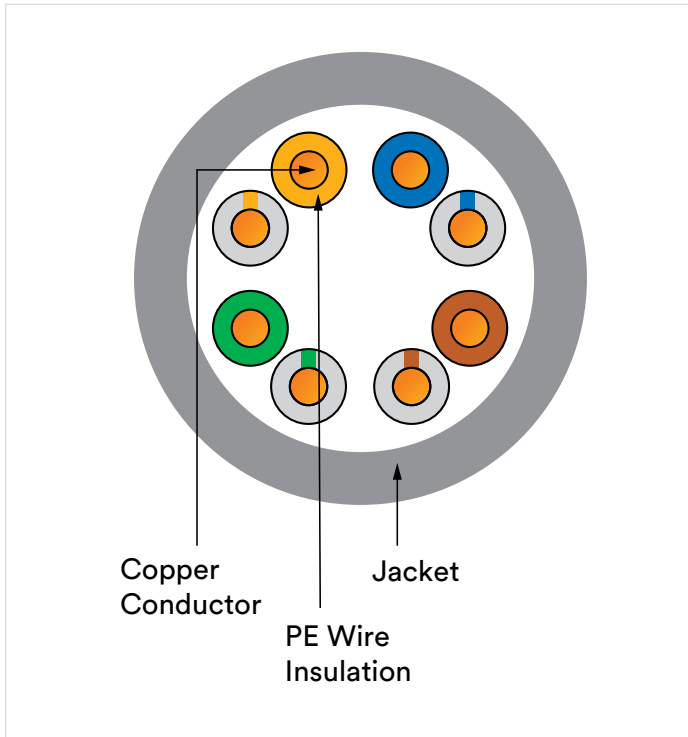


Faceplate Ordering Information

Part Number	Description	Legacy Part Number
XF003849205	RJ45 Faceplate Single-Gang UK, 1 port, 86 x 86 mm, white	VOLFPUK-1K
XF003849213	RJ45 Faceplate Single-Gang UK, 2 port, 86 x 86 mm, white	VOLFPUK-2K
FQ100081360	Modular Faceplate for one RJ45 connector, 45 x 45 mm, white	FP4MF1KW
FQ100081378	Modular Faceplate for two RJ45 connectors, 45 x 45 mm, white	FP4MF2KW
DE620045539	Modular Faceplate for one RJ45 connector, 50 x 50 mm, white	60-516-10425
DE620045547	Modular Faceplate for two RJ45 connectors, 50 x 50 mm, white	60-516-10525
FQ100031001	Angled Faceplate for two RJ45 connectors, 45 x 45 mm, white	FP4MF1KI
FQ100031019	Angled Faceplate for one RJ45 connector, 45 x 45 mm, white	FP4MF2KI
FQ100079778	Modular Faceplate for two RJ45 connectors, 22.5 x 45 mm, white	FP4MF2K
FQ100078648	Modular Faceplate for one-click 2 RJ45 jack, 22.5 x 45 mm, white	FP2MF1K
FQ100084521	RJ45 ECO Front Faceplate 45 x 45 mm, 1 port	FP2MF1K
UU003115423	LJ6C Adapter	VOL-LJ6C-A-1K
UU003115449	Euro-Angled Adapter	VOL-EF-A-1K

Copper Cable

Our four-pair copper cable is high performing, compliant with IEC 61156-5:2013 (ed. 2.1) and EN 50288-10-1: 2012. Cat.5e UTP cable is made up of four pairs of colour-coded solid copper wires and an outer fire-retardant jacket. The cable meets industry standards for low voltage networks to transfer voice, data and video signals. Applications include IEEE 802.3 standards for 10 Mb to 1 Gb networks.



Copper Cable Specifications

Application	IEEE 802.3: 1000BASE-T; 100BASE-TX; 10BASE-T IEEE 802.3af – PoE; IEEE 802.3at -PoE+ 155 / 622 Mb/s ATM
Typical properties	
Conductor diameter	AWG 24
Insulation diameter	Min: Pe 0.85 mm
Separator	None
Cable assemblies	1x4 pairs
Sheath material	LSZH™ or PVC
Weight	Max: 30 kg/km
Mechanical features	
Cable outer diameter	Max: 5.20 mm
Bending radius	
Dynamic (installation)	8x outer diameter
Static (installed)	4x outer diameter
Temperature range:	
In service	-20°C to +60°C
Installation/transport/storage	0°C to +50°C
Max. pulling tension	80N
Electrical features (@ 20°C ± 5°C)	
DC resistance (max)	9.5Ω/100m @ 20°C
Resistance unbalance (max)	2% @ 20°C
Insulation resistance (500 V)	5000 MΩ.km @ 20°C
Mutual capacitance (nominal)	No requirement specified
Test voltage (DC, min)	1 kV/1 min
Capacitance unbalance max (pair to ground)	160 pF/100m @ 1 kHz
NVP (nominal)	66%
Directive/Standard	
Cable	IEC 61156-5/EN 50288-3-1
Cabling system standard	ISO 11801 2. ed/EN 50173-1/TIA 568-C.2
Directive	
RoHS	2011/65/EU (RoHS2)
LVD	LVD 2006/95/EC
PVC	
Fire Rating	IEC 60332-1
LSZH	
Smoke	EN / IEC 61034-2
Gas/Toxicity	IEC 60754-2 / IEC 60754-1

Copper Cable Ordering Information

Part Number	Description	CPR Rating	Colour	Length
UU009120237	Cat.5e UUTP LSZH 4-Pair 24AWG, VOL5EUL4305	Eca	Green	305 M
UU009120252	Cat.5e UUTP PVC 4-Pair 24AWG, VOL5EUP4305	Eca	Green	305 M

Additional colours of cable available upon request. Please consult your local Corning representative or alternatively Corning Customer Care at 00800 2676 4641 or email cc.emea@corning.com

A solid blue square containing the word "CORNING" in white, serif, all-caps font.

CORNING

**Corning Optical Communications GmbH & Co. KG • Leipziger Strasse 121 • 10117 Berlin, GERMANY
+00 800 2676 4641 • FAX: +49 30 5303 2335 • www.corning.com/opcomm/emea**

Corning Optical Communications reserves the right to improve, enhance, and modify the features and specifications of Corning Optical Communications products without prior notification. A complete listing of the trademarks of Corning Optical Communications is available at www.corning.com/opcomm/trademarks. All other trademarks are the properties of their respective owners. Corning Optical Communications is ISO 9001 certified. © 2019 Corning Optical Communications. All rights reserved. LAN-2622-A4-BEN / December 2019