

# Reliable. Intelligent. Adaptable.



Eaton's Pow-R-Line® XD switchboard is a reliable solution that integrates both draw-out insulated case and molded case circuit breakers into a single UL® 891 assembly, including Eaton's new Power Defense™ circuit breakers. This new switchboard can be configured to a variety of applications including single-ended and double-ended substation lineups, and can easily align with existing Pow-R-Line switchboard configurations and designs.

## Product offering

- 2000–6000 A rated bus
- 240 Vac and 480 Vac ratings
- Short circuit current rating up to 100 kAIC at 480 Vac
- Silver- or tin-plated copper
- 400–4000 A draw-out insulated case circuit breakers
- 70–600 A draw-out molded case circuit breakers
- 20–1200 A fixed group-mounted molded case circuit breakers
- Indoor enclosures

## Standards

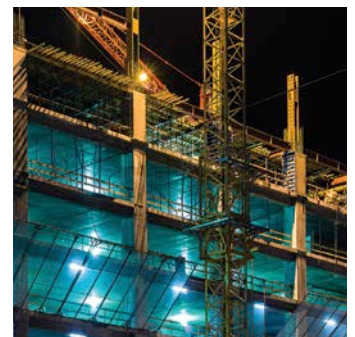
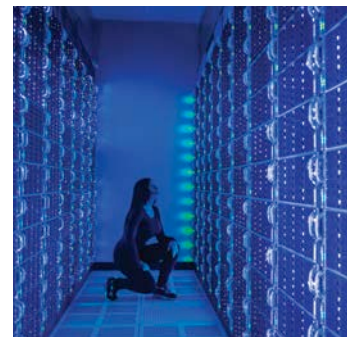
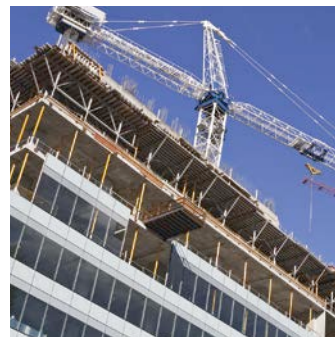
- UL 891
- Circuit breakers—UL 489
- Seismic certified
  - 2012 International Building Code (IBC)
  - 2013 California Building Code (CBC)

## Industry applications

- Data centers
- Healthcare and institutions
- Commercial construction

## Key benefits include

- **Reliable solution:** Reduce downtime with improved breaker change-out capability
- **Safer design:** Enhance safety with draw-out compartmentalized design
- **Intelligent design:** Communicate through new Power Defense breaker trip units, allowing you to use fewer components and a simplified design while keeping your system connected and customers informed
- **Competitive lead time:** Assembled in multiple manufacturing facilities across the nation to meet local customer requirements
- **Adaptability:** Endless configurations available to suit your specific applications



Powering Business Worldwide

The Pow-R-Line XD is an innovative rear-accessible assembly that provides simplified access to cabling compartments with ample conduit space. It is the perfect solution for mission-critical applications at installations such as data centers, institutions, hospitals and government offices, and for industrial users who are looking to upgrade or connect electrical distribution systems with limited space.



#### Intelligent and flexible

- Accommodate all power distribution system requirements with Power Xpert® Release trip unit technology, providing new advancements in safety, customization and efficiency
- Maximize adaptability with switchboard configurations supporting amperage up to 6000 A
- Improve power system health, diagnostics and safety through the integration of Power Defense RF insulated case circuit breakers for amperages up to 3000 A
- Support safe, reliable power distribution with Magnum™ SB insulated case circuit breakers for applications with amperage of 4000 A

#### Enhanced reliability and safety

- Improve personnel safety and significantly reduce incident energy levels with arc flash mitigating features including compartmentalization and Arcflash Reduction Maintenance System™ (ARMS)
- Ensure additional protection during routine maintenance procedures through standard safety interlock accessories and covers
- Simplify equipment protection and preventive maintenance with Power Xpert Release trip units, featuring internal secondary injection testing, multiple communication platforms and programmable current sensor ratings

#### Compact design and reduced installation cost

- Reduces installed footprint by combining traditional switchgear capabilities such as compartmentalization and draw-out breakers within a compact switchboard enclosure
- Enhances application flexibility with the ability to configure a variety of breaker types within a single section
- Simplifies installation and maintenance through rear-accessible cable compartment entry and ample conduit space

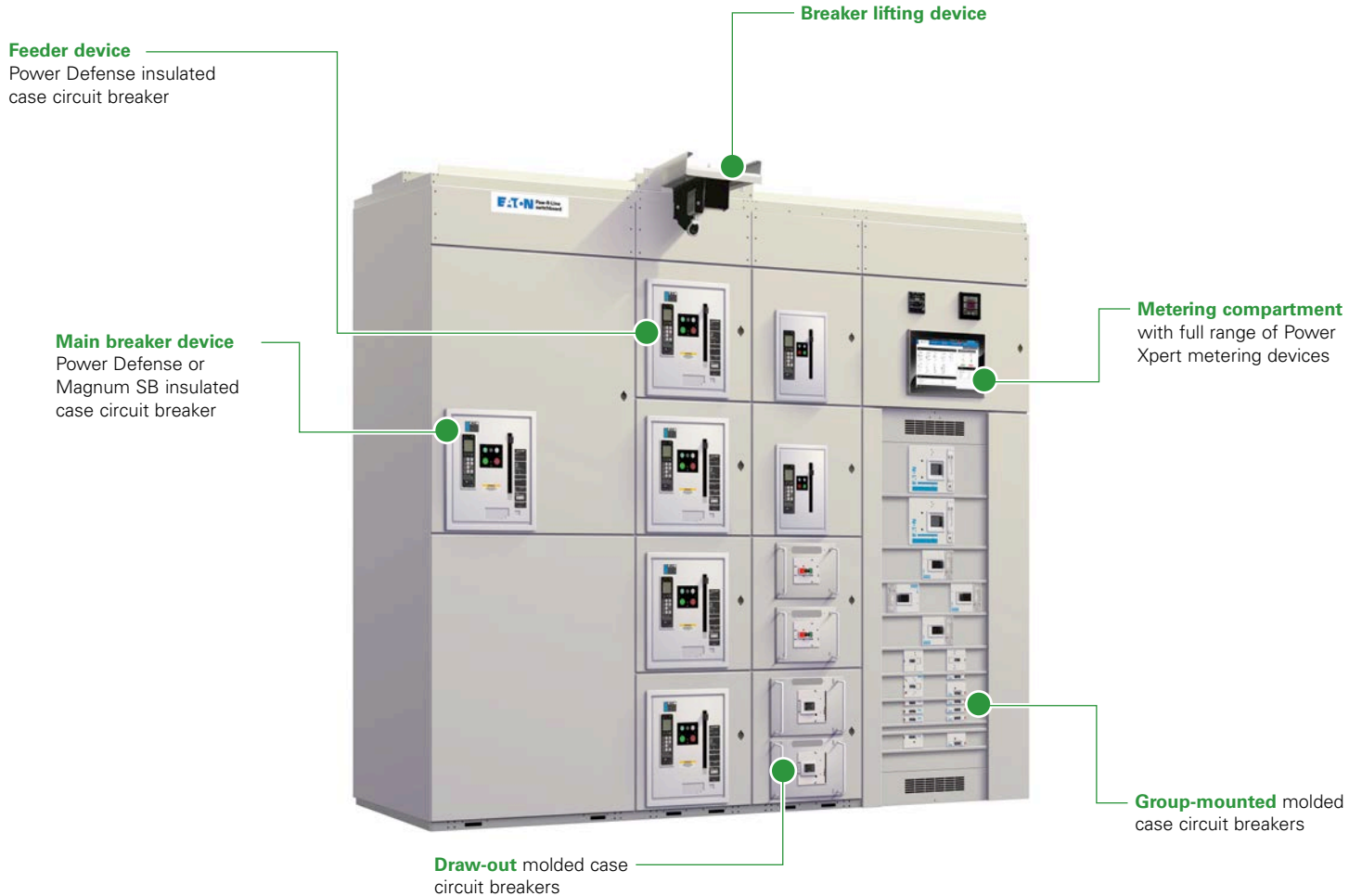
#### Competitive lead times

- Leverage Eaton's strategically located assembly facilities across North America for comprehensive local coverage and shorter lead times
- Confidently support projects with Eaton's century of experience with design and manufacturing across various industries and decades of experience providing custom solutions for a wide range of customer applications

## Dimensions and configurations

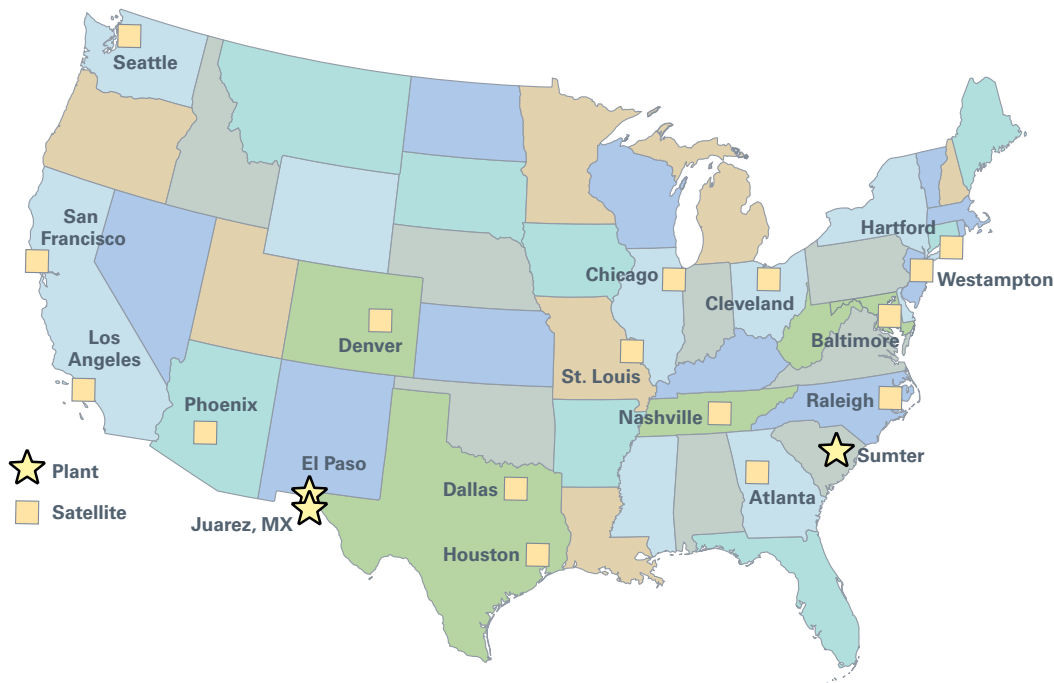
Model description	Type	Maximum ampacity riser bus	Minimum structure width	Cell A	Cell B	Cell C	Cell D
Auxiliary section	Misc	—	22"	Aux	Aux	Aux	Aux
Transition to PRLC	Misc	—	20"	Aux	Aux	Aux	Aux
<b>Molded case breaker</b>							
JG 250 A (draw-out)	Feeder	4500 A	22"	<b>XX</b>	<b>XX</b>	<b>XX</b>	<b>XX</b>
LG 600 A (draw-out)	Feeder	4500 A	22"	<b>X</b>	<b>XX</b>	<b>X</b>	<b>XX</b>
Chassis fixed, group mount	Feeder	4000 A	36"	Cells A–D combined			
<b>Insulated case breaker</b>							
RF 800–3000 A (draw-out)	Main, Feeder	4500 A	22"	<b>X</b>	<b>X</b>	<b>X</b>	<b>X</b>
RF 800–3000 A (draw-out)	Busfed Main, Tie	4500 A	24"	Cells A & B combined		Aux or Feeder	Aux or Feeder
Magnum 4000 A (draw-out)	Main, Tie, Feeder	—	36"	Cells A & B combined		Aux only	Aux only

**Note:** **X** = One device per cell, **XX** = Two devices per cell.



Featuring Pow-R-Line XD switchboards





Eaton Pow-R-Line panelboards and switchboards are built to your requirements at our world-class manufacturing plants in Sumter, SC, El Paso, TX, and Juarez, Mexico. In addition, Eaton has 16 regional Satellite facilities located across the country to meet your panelboard and switchboard service needs.

For an unparalleled commitment to your specific needs, please visit your local Satellite facility.

#### Atlanta

7000 Highlands Parkway SE  
Suite 102  
Smryna, GA 30082  
678.309.4260

#### Baltimore

7451 Coca Cola Drive  
Suite C  
Hanover, MD 21076  
410.796.7777

#### Chicago

230 Windy Point Drive  
Glendale Heights, IL 60139  
630.260.6303

#### Cleveland

12875 Corporate Drive  
Unit E  
Parma, OH 44130  
216.265.3284

#### Dallas

631 Westport Parkway  
Suite 100  
Grapevine, TX 76051  
817.251.6733

#### Denver

2450 Airport Road  
Suite C  
Aurora, CO 80011  
303.366.2080

#### El Paso

7800 Trade Center Avenue  
El Paso, TX 79912

#### Hartford

40A International Drive  
Windsor, CT 06095  
860.298.1305

#### Houston

14825 Northwest Freeway  
Suite 100  
Houston, TX 77040  
713.744.7530

#### Juarez

Prolongacion Hermanos Escobar  
#7014, Parque Industrial Omega  
Adicion Oriental Cd.  
Juarez, Chihuahua Mexico 32648

#### Los Angeles

13201 Dahlia Street  
Suite 300  
Fontana, CA 92337  
919.428.8903

#### Nashville

1421 Gould Boulevard  
Suite C  
La Vergne, TN 37086  
615.287.3200

#### Phoenix

560 N 54th Street  
Suite 1  
Chandler, AZ 85226  
480.449.4222

#### Raleigh

9400 Globe Center Drive  
Suite 121  
Morrisville, NC 27560  
919.544.7074

#### St. Louis

56 Soccer Park Road  
Fenton, MO 63026  
636.717.3500

#### San Francisco

20923 Cabot Boulevard  
Hayward, CA 94545  
510.784.8981

#### Seattle

1604 15th Street SW  
Suite 114  
Auburn, WA 98001  
253.833.5021

#### Sumter

845 Corporate Circle  
Sumter, SC 29154  
803.481.3131

#### Westampton

96 Stemmers Lane  
Westampton, NJ 08060  
609.835.4230

#### Eaton

1000 Eaton Boulevard  
Cleveland, OH 44122  
United States  
Eaton.com

© 2019 Eaton  
All Rights Reserved  
Printed in USA  
Publication No. PA015004EN / Z22381  
April 2019

Eaton is a registered trademark.

All other trademarks are property of their respective owners.

To learn more, visit  
[Eaton.com/PRLXD](http://Eaton.com/PRLXD)

Follow us on social media to get the latest product and support information.

