



Empowering the safe return to work



Tyco security solutions make your places and spaces healthy and secure with integrated, intelligent and contactless security solutions.

The power behind **your mission**





COVID-19 has had a dramatic impact on the way we live and work today. Office spaces have been remodeled, business policies have been overhauled, security ecosystems have been revamped...all to accommodate new restrictions and procedures designed to help stop the spread of infection and avoid another economic shutdown. Employees are counting on their management teams to take the necessary precautions and combining new office protocols with smart technology will be the formula for long-term, sustainable success.

Tyco security solutions from Johnson Controls support the safe return to workplaces. We help you reoccupy and reimagine your spaces as you return to work with confidence.

We deliver discreet, contactless, and highly accurate building access solutions that promote a seamless flow of people, fostering new harmonies between people and spaces. We can help protect your people and property at all points of the user journey: **Perimeters, access points, and interiors.**



Proactive safety measures start at the entrance

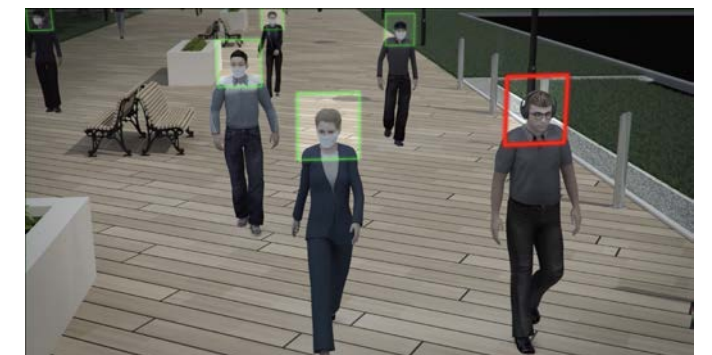
Prevention is better than a cure, so we designed solutions that potentially stop problems before they even reach your walls. In busy environments, like multi-occupant buildings where hundreds of employees and visitors enter a lobby at the same time, it can be difficult to monitor who does or does not have a face covering. Automating this essential task is more efficient and effective through video management systems.

Enhanced Situational Awareness with No Mask Alerts

American Dynamics victor & VideoEdge and exacqVision video management solutions with Tyco AI analytics integrate seamlessly with our portfolio of Illustra cameras, including the Illustra PTZ, with stunning day & night performance, up to 30x optical zoom, and full 4K resolution, to allow your outside spaces to become smart spaces with pre-emptive mask detection for safeguarding personnel and reinforcing PPE compliance.

These solutions automatically monitor and search for "No Mask Detected" events so security personnel can quickly mitigate any potential breaches by receiving automatic alerts.

In addition, powerful AI-based recognition analytics within these intelligent solutions can identify people of interest before they even get to the door.



Restricted access without restricted flow

Building entrance management is critical in two ways. First you want restricted access, for either physical safety or health reasons. Second, you may wish to perform safety and security checks without causing restricted flow and social distancing violations.

We solve these problems through three smart solutions:



Elevated Skin Temperature Alerts

Elevated Skin Temperature scanning with Illustra Pro Thermal EST Camera

We all know that face coverings are just not enough. We've learned that one of the biggest challenges with containing contagious illnesses is that many people simply don't know they are sick until it's too late. While requiring face coverings is a good first line of defense, using thermal cameras to scan for elevated skin temperatures as staff and visitors enter the building is an unobtrusive way to strengthen the barriers of protection. Our non-invasive, contactless Illustra Pro Thermal EST camera, deployed in controlled areas and facilities where initial skin temperature measurement is required before access is granted, can measure skin temperatures with a $\pm 0.2^{\circ}\text{C}$ / 0.4°F accuracy tolerance at an effective distance of 1 to 2 meters (3.3 to 6.6 feet).

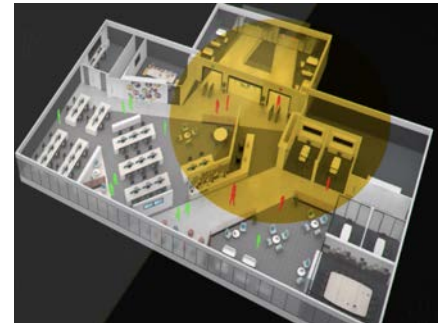


Frictionless Access Control

Limit touch points with a hands-free access control solution

While an elevated skin temperature reading is a clear indication that someone might be sick with a contagious illness, symptoms are not always visible. Asymptomatic employees could come into work and unintentionally spread the disease to dozens - or hundreds - of colleagues. One way to help slow the spread of an infectious illness is to limit potential touchpoints throughout a building.

Built using Tyco AI facial recognition software Illustra Insight integrates with C-CURE 9000 to offer a fast, hygienic, and contactless way for authorized people to smoothly move around buildings, places and spaces, and yet provides security personnel with a highly effective solution for controlling and visually verifying who has access to restricted areas. This solution boasts a recognition time of less than a second from up to three meters away, and features built-in liveness detection to prevent spoofing.



Contact Tracing

Contact tracing and limiting access with Temporary Clearance Filters and Contagion Reports

Designated health screening areas are the new norm as buildings re-open, whether at the main entrance or at several across a campus. Having the flexibility to restrict access to certain doors until personnel have successfully passed a health checkpoint is critical. Being able to do so with existing deployed credentials provides an optimal solution. With the Temporary Clearance Filter feature in Software House C-CURE 9000, you can define entrances to ensure that every person is screened at least once a day and only screened cardholders have access to most readers. Once personnel complete their screening and swipe their card at a reader in a designated area, their clearance level is raised, which allows them access to additional doors according to their standard clearance level. Also, to assist with contact tracing, close proximity contagion reports can be run if someone with an elevated skin temperature has been identified.

Switch from being reactive to proactive within your walls



Social distancing has become part of the new vernacular. Staying at least six feet from other people in both indoor and outdoor spaces and with wearing a masks are vital in helping prevent the spread, and are a key part of "return to work" compliance measures that many businesses have adopted. Our video and access control ecosystems, combined with Tyco AI analytics, work together to maintain the security and safety of all occupants with important tools to track those who are non-compliant so business can safely remain open.

Illustra cameras deliver sharp image quality for increased capabilities. This, combined with Tyco AI-powered American Dynamics victor & VideoEdge and exacqVision recording and management systems, moves the value of your video investment from manual surveillance to pre-emptive intelligence. This is key to switching from being reactive to being proactive.

Our smart buildings are made to think using AI-powered analytics to deliver occupancy and crowd formation alerts for social distancing management, mask detection, and PPE non-compliance identification. Even the power to re-identify and track people of interest and those who may seek to flaunt safety measures and the safety of others is handed to you through this smart system.

Our solutions help you stay compliant and maintain control of vital social distancing and occupancy guidance. Integrated access control systems, Software House C-CURE 9000, CEM Systems AC2000 and Kantech EntraPass, facilitate limit setting on controlled spaces to ensure optimum occupancy levels and social distancing measures are met.

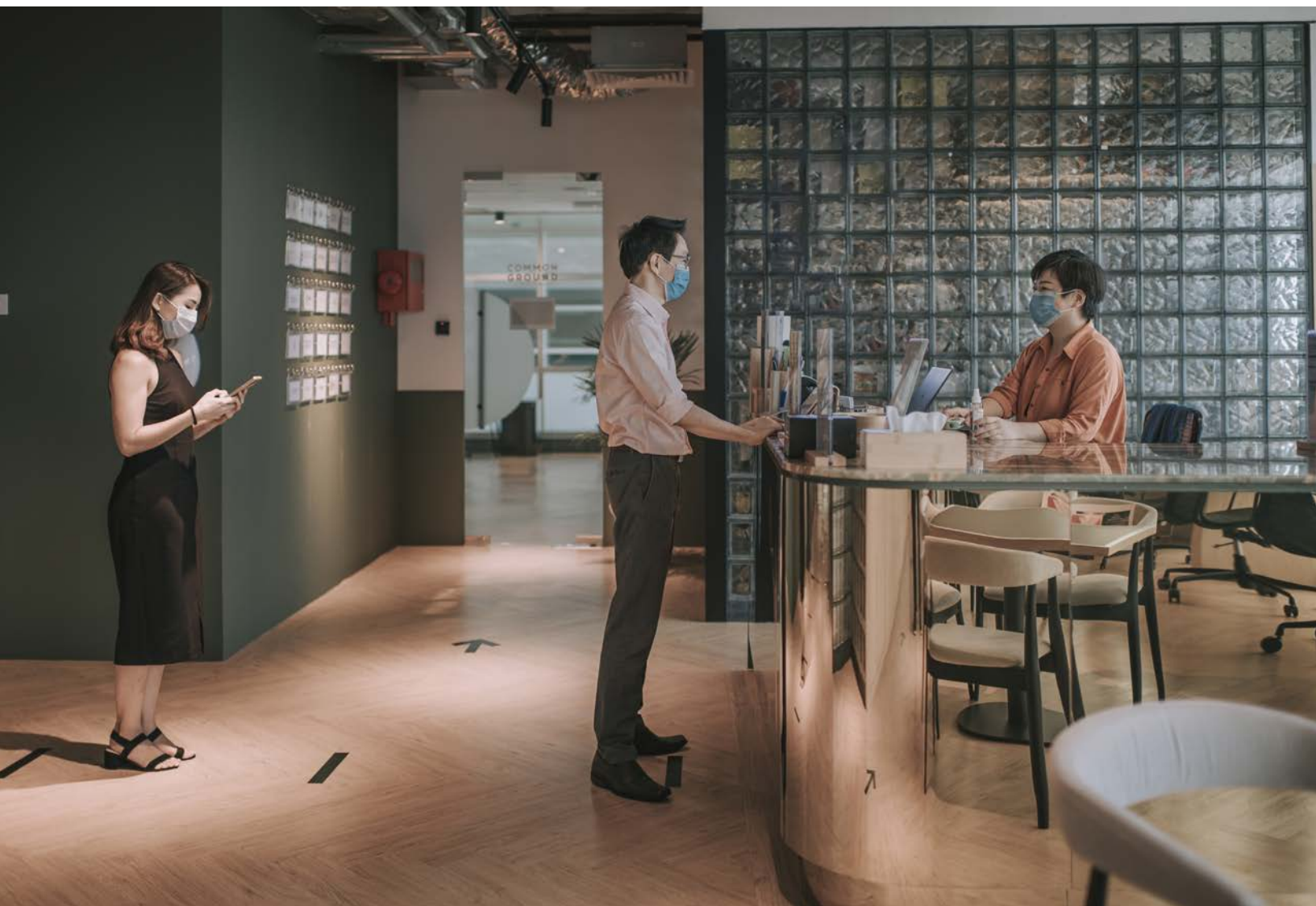
Smart buildings provide places and spaces that are secure, hygienic, and safe.

Tyco security solutions are changing the way we think about security and safety and how we interact with buildings. We deliver integrated, intelligent spaces by fusing our **best-in-class** product portfolio and services.

But our vision doesn't stop there. We are uniting our vast portfolio of solutions across the wider Johnson Controls family, including Security, Fire and Safety, Energy Management, Building Control, Space Utilization, Compliance and AI to **deliver the smart buildings of today and tomorrow.**

Learn more at www.tyco.com





About Johnson Controls

At Johnson Controls, we transform the environments where people live, work, learn and play. From optimizing building performance to improving safety and enhancing comfort, we drive the outcomes that matter most. We deliver our promise in industries such as healthcare, education, data centers and manufacturing. With a global team of 100,000 experts in more than 150 countries and over 130 years of innovation, we are the power behind our customers' mission. Our leading portfolio of building technology and solutions includes some of the most trusted names in the industry, such as Tyco®, YORK®, Metasys®, Ruskin®, Titus®, Frick®, Penn®, Sabroe®, Simplex®, Ansul® and Grinnell®.

For additional information, please visit www.johnsoncontrols.com or follow us [@johnsoncontrols](https://twitter.com/johnsoncontrols) on Twitter.

© 2021 Johnson Controls. All Rights Reserved.

The power behind **your mission**

