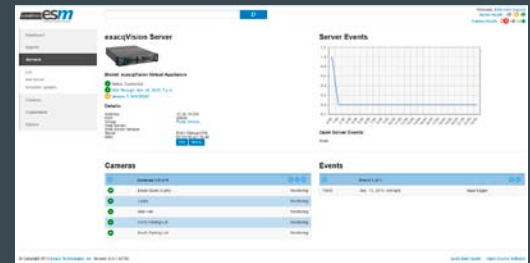
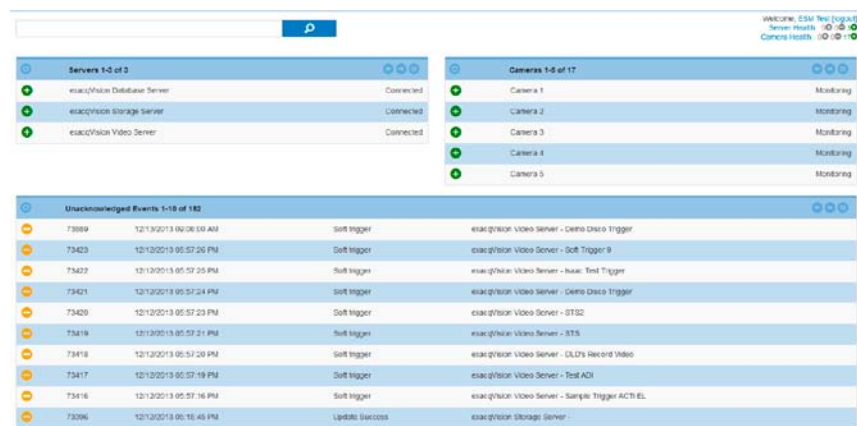


Enterprise System Manager (ESM) Minimizes Downtime of exacqVision Servers



Features That Make a Difference:

- Maximize uptime of your exacqVision Enterprise servers** with constant server health monitoring. Receive email notifications or use ESM's browser-based dashboard to receive immediate notification of system errors and warnings.
- Instant health assessment of all exacqVision Enterprise servers from anywhere** using the intuitive dashboard to visually confirm the health of all exacqVision servers from a PC browser, tablet or smartphone.
- Highly flexible e-mail notifications** allow individual users or groups of users to be e-mailed real-time or periodically for over 25 user selectable errors and warnings such as VMS recorder offline, storage warning, drive failure, temperature alarm or camera disconnected.
- Reduce software maintenance time** with scheduled software updates. In a matter of minutes, you can schedule hundreds or thousands of servers to receive the latest exacqVision features.
- Monitor camera health** and events to confirm camera uptime and proper positioning.



CAPACITY, FEATURES & LICENSING

Required ESM License	One EVESM
Required Recorder License	exacqVision Enterprise with current SSA
Recorder Hardware Monitoring	exacqVision recorders
Recorder Software Monitoring	exacqVision recorders and third-party recorders
Camera Monitoring	exacqVision recorders and third-party recorders
Maximum Monitored Recorders	1,500
Maximum Concurrent Clients	50

MINIMUM SERVER REQUIREMENTS

Typically monitors less than 50 servers with up to 5 simultaneous client connections

Processor	Intel i3-4100 or better
RAM	8GB minimum
Storage	100GB SSD
Network	25 Kbps per video recorder, plus 256 Kbps per simultaneous client connection
Operating System	Windows 7 or Server 2008 R2, Ubuntu 10.04 Linux (64 bit or 32 bit with PAE)

RECOMMENDED SERVER REQUIREMENTS

Typically monitors 500 or more servers with 25 simultaneous client connections

Processor	Intel E3-1275 Xeon or better
RAM	16GB (32GB recommended for > 1,000 recorders)
Storage	250GB SSD
Network	50 Kbps average, 1 Mbps peak per video server. 512 Kbps per client connection
Operating System	Windows 8 or Server 2012, Ubuntu 12.04 Linux
E-mail Host	SMTP e-mail server

PC CLIENT REQUIREMENTS

Processor	Intel Atom Z3470 or better
RAM	1GB Minimum
Network	256 Kbps minimum, 2 Mbps recommended for live video streaming
Browser	IE 9, Chrome 31, Safari 7, Mozilla Firefox 25

MOBILE CLIENT REQUIREMENTS

Compatibility	iOS or Android phones and tablets with Chrome 31 or Safari 7 or better
Network	128 Kbps minimum, 1 Mbps recommended with live video
Browser	Microsoft® IE for Mobile, Google Chrome, Safari

Related Products



exacqVision Enterprise VMS

exacqVision hybrid & IP camera servers

www.exacq.com