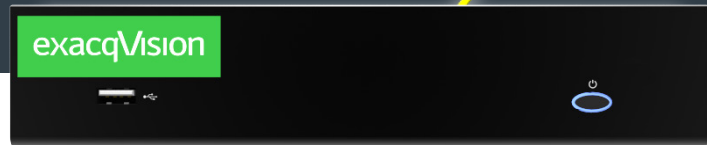
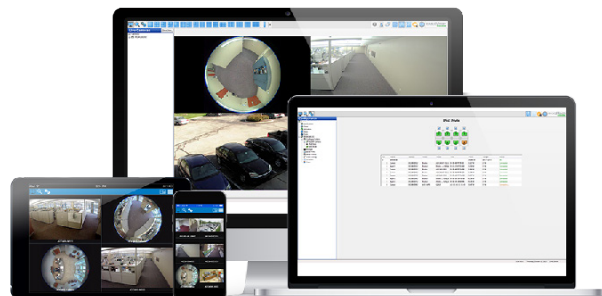
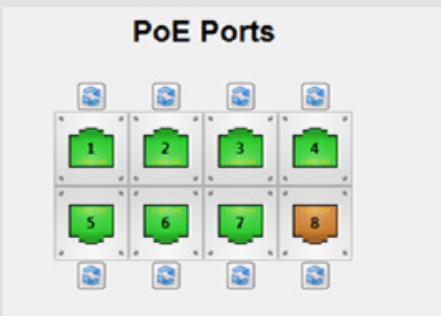


## M-Series All-in-One PoE Recorder

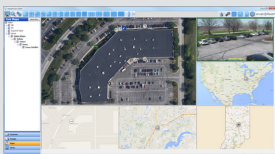


- **All-in-One Recorder—Easiest to Quote, Install & Service**
  - 4 or 8 PoE camera ports, No external Ethernet switch required
  - Includes 4 or 8 exacqVision START licenses (upgradeable to Pro or Enterprise)
  - Up to 2TB of video storage for up to 8 IP cameras
  - Unlimited scalability by adding more recorders (Pro or Enterprise)
- **Camera Power Management**
  - Monitor and control camera power usage in exacqVision client, no separate switch management software required
  - Save maintenance trips by remotely power cycling individual PoE cameras
  - 30 watts max per 4-ports (60 watts max for 8-ports)
  - Supports PoE camera classes 4w, 7w, & 15w
- **Easy Connect**
  - Simply plug in and record; automatically configures IP cameras for motion-based recording
  - Easily connect to supported IP cameras
- **View Video Anywhere with Free Client Software**
  - View and manage servers from Windows/Linux/MAC PCs with free client software
  - View live and recorded video in any browser
  - View live and recorded video on iOS or Android mobile devices with free application
- **3-Year Warranty & Software Updates**
  - Includes a 3-year hardware warranty and technical support
  - 3 years of unlimited software updates to constantly increase the functionality of your exacqVision recorder

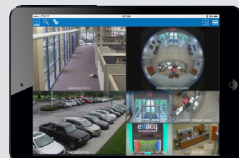


| M-SERIES POWERED IP CAMERA SERIES                                   |   |  |
|---|---|--|
|   | 4-Port  | 8-Port   |
| Maximum IP Cameras  | 4   | 8  |
| Included IP Licenses  | 4   | 8  |
| PoE Camera Ports  | 4   | 8  |
| PoE Power<br><i>(Supports PoE camera classes 4w, 7w, &amp; 15w)</i> | 30 watts max<br><i>(Shared across 4 ports)</i>          | 60 watts max<br><i>(Shared across 8 ports)</i> |
| Alarm Inputs  | 4 inputs (TTL)  | 8 inputs (TTL)                                 |
| Alarm Outputs   | 1 output (relay)  | 1 output (relay)                               |
| SERVER  |   |  |
| Pre-Loaded VMS Software   | Start (standard)<br>Professional, Enterprise (optional) |  |
| Typical Video Storage Rate (Mbps)                                   | 40 Mbps   |  |
| Local Client Display Rate (FPS)                                     | 120 FPS   |  |
| Maximum Camera Resolution displayed locally                         | 1936x1936   |  |
| Maximum Hard Drives   | 1   |  |
| Maximum Storage   | 1 TB 4-ports/2 TB 8-ports                               |  |
| Monitor Output  | HDMI, VGA (duplicate output)                            |  |
| Operating System  | Linux   |  |
| CPU   | HiSilicon 3535  |  |
| RAM   | 512 MB  |  |
| NIC   | 2x1 Gbps  |  |
| USB   | 3 USB (1 front, 2 rear)                                 |  |
| Included Peripherals  | Mouse   |  |
| GENERAL   |   |  |
| Dimensions  | 13" x 8.75" x 1.75"<br>33 x 22.2 x 4.4 cm               |  |
| Weight  | 9 lbs.<br>4 kg  |  |
| Regulatory  | UL-Listed, CE, FCC                                      |  |
| Input Voltage   | 12V-DC, 7.5A  |  |
| Operating Temperature   | 40° - 95° F<br>45° - 35° C                              |  |

## Related Products



exacqVision VMS Software



Exacq Mobile App