

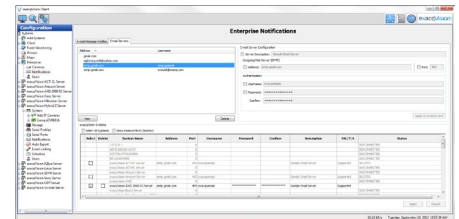
exacqVision[®] enterprise

Enterprise VMS Software

*Powerful, Easy-to-Use VMS
for Enterprise Video Surveillance*


Key Features & Benefits:

- **Enterprise User Setup & Active Directory/LDAP Support** — Centrally add, manage and modify user accounts and privileges to one or all servers simultaneously with a single entry. Enterprise VMS integrates with existing Active Directory or LDAP servers.
- **Enterprise Camera Administration** — View all cameras in the system and sort by connection, recording status, IP address, firmware revision. View live or instant playback with just one click.
- **Multi-Level Mapping** — Create maps within maps linked to exacqVision cameras and servers around the world. Triggers and alarms can be integrated into and controlled directly from the maps.
- **Enterprise Health Manager** — Option to add a stand-alone client-server monitoring system to monitor and log analog camera video loss, IP camera connection loss, hard drive failure, server connection loss and system temperature on all exacqVision servers. The health manager immediately alerts the user via email when a change is detected.
- **Enterprise Notifications** — Set up automatic email notifications to be sent to one or many users to alert them of events occurring on the client and servers



Additional Features Included in exacqVision Pro and Enterprise VMS:

- Third-Party IP Camera & Access Control System Integration
- Audit Trail Functionality
- SmartSearch
- Event Monitoring
- exacqReplay
- Digital PTZ Functionality
- Included Mobile App
- Multi-streaming in IP Cameras
- Thumbnail and Timeline Search



SPECIFICATIONS

SOFTWARE FEATURES		exacqVision enterprise
System	Server OS Compatibility	Windows/Linux
	Free Client Software	Windows/Linux/Mac
	Supported Browsers	IE, Chrome, Safari, Opera, Firefox
	Max Cameras Per Server	64 Analog / 128 IP
	Max Server Connections Per Client	512 (thick client) / 16 (web client)
	Bandwidth Throttling	Yes
	Pre-Post Alarm Recording	Yes
	Panoramic Lens Support	Yes
	Video Expiration	Min/Max retention by camera
	iSCSI Support	Yes
	NAS Support (OS Dependent)	
	Time-Lapse Recording	Yes
	exacqVision Surveillance Keyboard Support	Yes
	3rd Party Client Joystick Configuration	Yes
	Soft Triggers	Yes
	Audit Trail	Yes
	Custom User Groups	Yes
	3rd Party Integrations	Yes
	Installs to IP Edge Device	
	Live View	PTZ Control & Presets
Digital PTZ Control & Presets		Yes
Multi-Monitor & Video Wall		Yes
Event Linking		Yes
Event-Driven Video Switching		Yes
Camera Groups		Yes
Event Notifications		Yes
Playback & Search	Maps	Multi-layer
	Multi-Camera Playback	Yes
	Simultaneous Video Export	Yes
	Thumbnail & Graphic Search Display	Yes
	Event Search	Yes
	POS & ATM Serial Text Search	Yes
	DVD Export	Yes
Enterprise	exacqReplay Instant Replay	Yes
	Smart Search	Yes
	Enterprise Cameras	Yes
	Enterprise Server Monitoring	Yes
Updates	Enterprise User Setup	Yes
	LDAP / Active Directory	Yes
	Health Monitoring	Enterprise Health Monitor option / email
	Software Updates Included (exacqVision Servers)	3 Years
Software Updates Included (3rd Party Servers)	1 Year	
Upgradeable to Next Tier		

exacqVision Enterprise VMS Software is available for installation on commercial off-the-shelf (COTS) servers or pre-configured in exacqVision hybrid and IP camera servers:

A-Series IP and Hybrid Servers

Z-Series IP and Hybrid Servers



All A-Series and Z-Series servers include a 3-year hardware warranty and 3-year Software Subscription Agreement (SSA).

Client Workstation Hardware Minimum Requirements	
Processor	Intel® Atom® D525 1.8GHz or higher
RAM	1 GB
Hard Drive	40 GB
Video	10 MB onboard video memory
Operating System	Microsoft® Windows XP or higher Apple Macintosh OSX 10.4 or higher (Intel-based Mac) Linux Ubuntu 8.04 or higher
Web Browser Access	
Compatibility	Internet Explorer, Firefox, Safari, Opera, Chrome
Mobile Device Access	
Compatibility	iPhone and iPod Touch, iPad, Android, Blackberry Playbook, Kindle Fire
Active Directory Server	
Compatibility	Minimum Server 2003 required on all AD domain controllers
Video Wall Workstation Recommended Specifications	
Processor	Intel i7-3770
RAM	8GB (maximum speed for your motherboard)
HDD	128GB SATA 2 SSD
Video	NVIDIA Quadro NVS 450 (VCC450NVS-X-16-DVI-PB)
Operating System	Microsoft® Windows 7 Pro 64-bit Apple Macintosh OS Mountain Lion (10.7) Linux Ubuntu 10.04 or higher



IP Cameras



Access Control



Video Analytics



The latest Network Integration Partner list is available at www.exacq.com/support/ipcameras.html



11955 Exit Five Parkway
Fishers, IN 46037 USA

+1.317.845.5710 USA
+5255.56080817 Mexico
+44.1438.310163 UK
+31.485.324347 Europe
+852.8120.9275 Hong Kong

exacq
Technologies