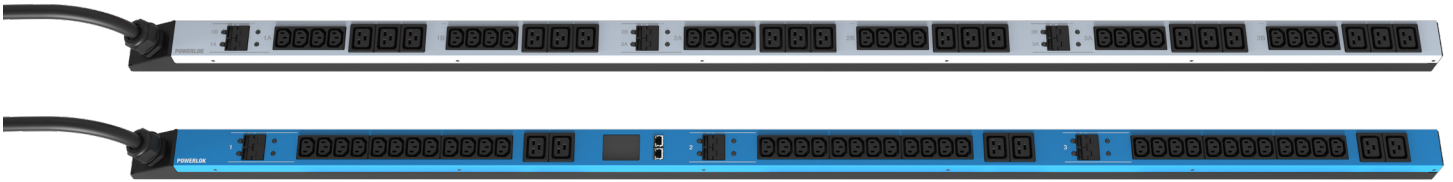


POWERLOK®



A BETTER PDU FROM THE INSIDE OUT

Engineered from the inside out to save you money and extend the life of the PDU reducing the overall cost to your business.

■ FAST. FLEXIBLE. EASY.

- 32 Quick Ship models available to ship same day
- 10,000+ Build Your Own Configurations – the possibilities are endless!
- Choose one of four available colors at no additional cost

32 **10,000 +**
OPTIONS
READY TO SHIP
SAME DAY
BUILD YOUR OWN OPTIONS

■ SMART ENGINEERING

- Modular construction enables industry leading outlet density – and FAST configurability
- Input whip angled toward the rack exit to improve access
- Compact design measuring only 2.18" W x 2.0"D
- Optional **CORDLOK**® to "lock" cords into place without sacrificing outlet density



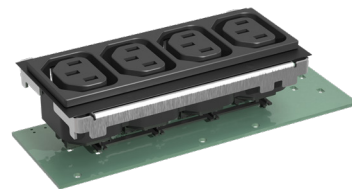
■ ADVANCED MONITORING

- Modern touch screen interface with embedded webserver for remote access by IP address
- SNMP communication for easy integration with DCIM packages already in place
- Designed to be daisy chained together and programmed to be network silent by default



■ RELIABILITY

- Machine soldered connections eliminates mechanical connections - no rats nest wiring!
- 3x less likely to fail over most competitive units



POWERLOK
by **GREAT LAKES**

4193 Route 6N • Edinboro, PA 16412 | 1.866.879.4522
View the complete Great Lakes product line at GreatCabinets.com
©2020 Great Lakes Data Racks & Cabinets. All rights reserved.

32 MODELS SHIP SAME DAY

SELECT MONITORED MODELS - 72", 10' WHIP, CARBON

Part No.	Amps	Volts	Power	Phase	C13	C19	5-15R	Plug
GL7101D	20A	120/208V	5.7 kW	3PH (WYE)	48	—	—	NEMA L21-20P
GL7102D	20A	120/208V	5.7 kW	3PH (WYE)	36	6	—	NEMA L21-20P
GL7103D	20A	120/208V	5.7 kW	3PH (WYE)	48	—	2	NEMA L21-20P
GL7104D	20A	120/208V	5.7 kW	3PH (WYE)	36	6	2	NEMA L21-20P
GL7151D	20A	240/415V	11.5 kW	3PH (WYE)	48	—	—	IEC 309 20A
GL7152D	20A	240/415V	11.5 kW	3PH (WYE)	36	6	—	IEC 309 20A
GL7153D	20A	240/415V	11.5 kW	3PH (WYE)	36	12	—	IEC 309 20A
GL7201D	30A	120/208V	8.6 kW	3PH (WYE)	48	—	—	NEMA L21-30P
GL7202D	30A	120/208V	8.6 kW	3PH (WYE)	36	6	—	NEMA L21-30P
GL7203D	30A	120/208V	8.6 kW	3PH (WYE)	36	6	1	NEMA L21-30P
GL7251D	30A	240/415V	17.2 kW	3PH (WYE)	48	—	—	IEC 309 30A
GL7252D	30A	240/415V	17.2 kW	3PH (WYE)	24	12	—	IEC 309 30A
GL7301D	20A	208V	3.3 kW	1PH	32	—	—	NEMA L6-20P
GL7302D	20A	208V	3.3 kW	1PH	24	4	—	NEMA L6-20P
GL7351D	30A	208V	5.0 kW	1PH	32	—	—	NEMA L6-30P
GL7352D	30A	208V	5.0 kW	1PH	36	6	—	NEMA L6-30P

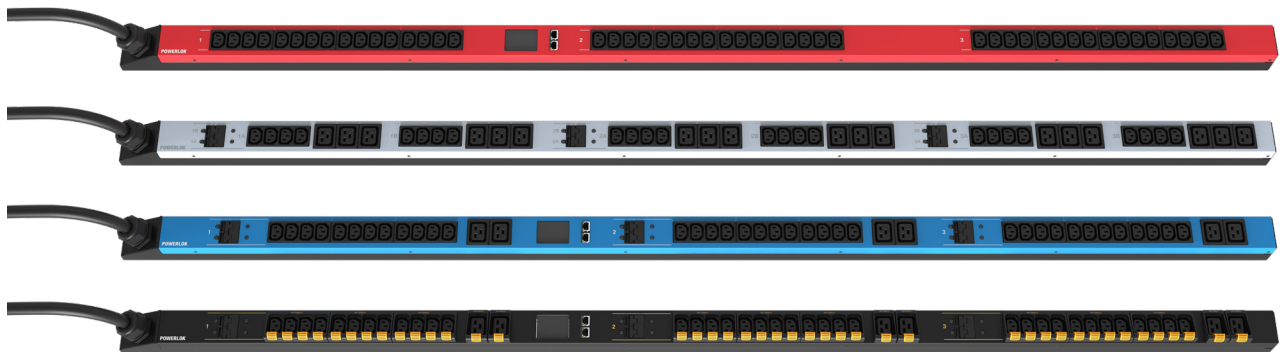
BASIC MODELS WITH SAME SPECIFICATION (AS ABOVE), REMOVE "D" FROM PART NUMBER.

BUILD YOUR OWN

POWERLOK CONFIGURATION - Request for quote

Power	Unit Length	Plug Type	Whip Length	Receptacles	CordLok	120V Tech Power	Color
<input type="checkbox"/> 20A 120/208V 3PH	<input type="checkbox"/> 36 IN	<input type="checkbox"/> NEMA	<input type="checkbox"/> FT	<input type="checkbox"/> C13	<input type="checkbox"/> Yes	<input type="checkbox"/> None	<input type="checkbox"/> Red
<input type="checkbox"/> 20A 240/415V 3PH	<input type="checkbox"/> 41 IN	<input type="checkbox"/> IEC	<input type="checkbox"/> (3-12FT @ 1FT inc.)	<input type="checkbox"/> C19	<input type="checkbox"/> No	<input type="checkbox"/> 1	<input type="checkbox"/> White
<input type="checkbox"/> 30A 120/208V 3PH	<input type="checkbox"/> 46 IN	<input type="checkbox"/> Other				<input type="checkbox"/> 2	<input type="checkbox"/> Blue
<input type="checkbox"/> 30A 240/415V 3PH	<input type="checkbox"/> 72 IN						<input type="checkbox"/> Carbon
<input type="checkbox"/> 20A 208V 1PH	<input type="checkbox"/> 82 IN						
<input type="checkbox"/> 30A 208V 1PH							
<input type="checkbox"/> OTHER							

COLORS AVAILABLE



4193 Route 6N • Edinboro, PA 16412 | 1.866.879.4522
 View the complete Great Lakes product line at GreatCabinets.com
 ©2020 Great Lakes Data Racks & Cabinets. All rights reserved.