

Great Lakes



CUSTOM CAPABILITIES

PRODUCT PROFILE...

This Wall Mount Enclosure is a customized version of our 15WM which is being systematically installed in every classroom within every school in a particular county.

This enclosure provides 7 RMU to mount an infrared audio system as well as other A/V components and the equipment which interfaces with the “smart boards” (electronic blackboards) in each classroom.

One of the unique features of the 15WM is one-person installation. That, combined with a solid, locking door and special gasketing, allowed us to successfully provide a better performing, more economical, and secure alternative to a competitive product which was previously in use and which students were previously able to access.

Great Lakes quality, our ability to develop a custom configuration for a long-term project, and our ability to ship truckloads of 300+ enclosures at a time were also key to us winning the business and the county ensuring that installations were completed on time.

For more information, contact Great Lakes Technical Support at 1-866-TRY-GLCC (879-4522).

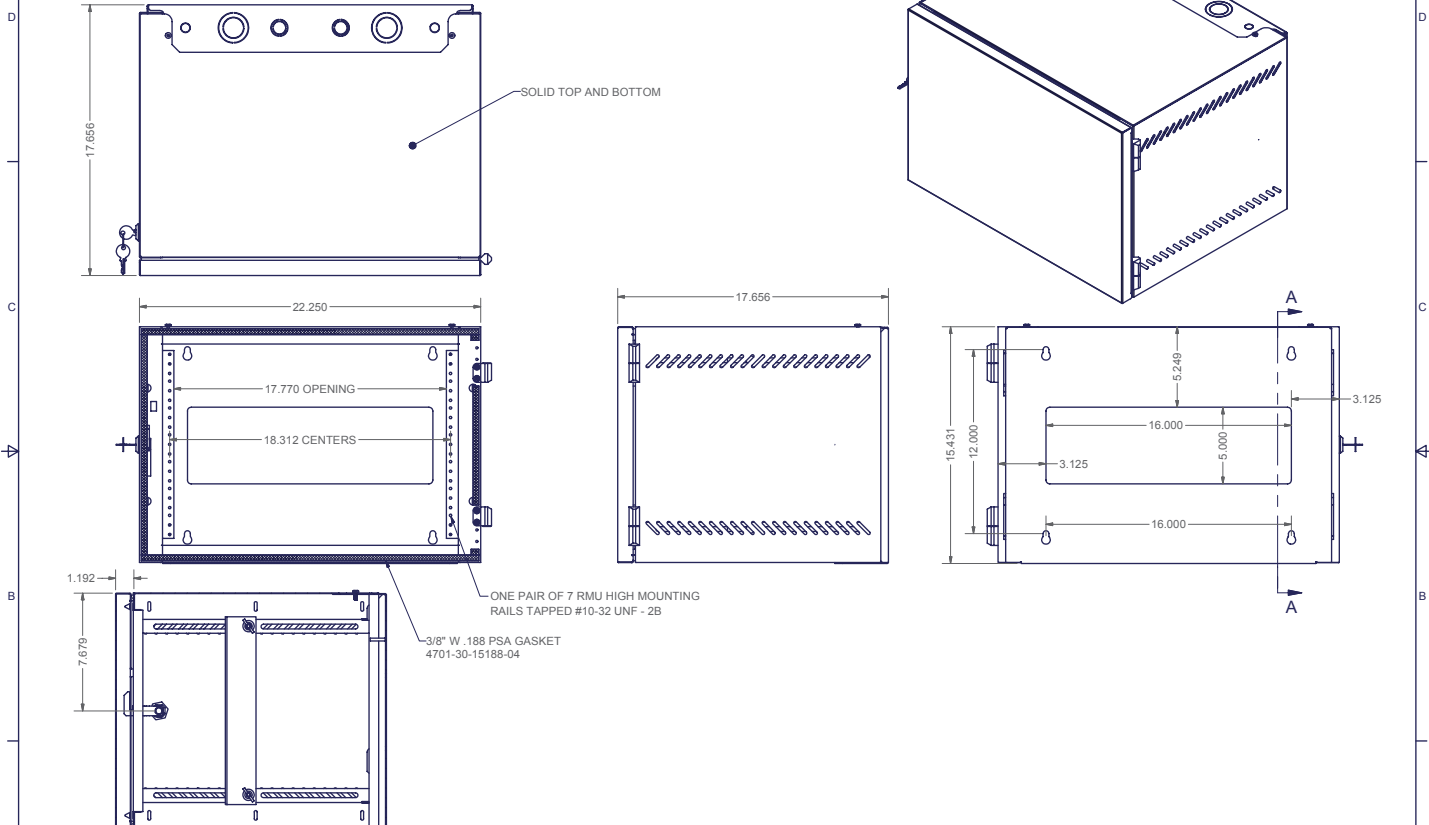
*Smart enough
for every
classroom!*

www.WeRackYourWorld.com





REVISION HISTORY			
REV	DESCTIO	DATE	APPROVED
0	ECO-02228	3/31/2008	WSS
1	ECO-02228	4/2/2008	CD
2	ECO-02228	4/2/08	CD
3	ECO-02259	4/29/2008	JL



SECTION A-A

<p>CUSTOMER APPROVAL *</p> <p>DATE</p>	<p>INTERPRET DRAWING PER ASME Y14.5M-1994</p> <p>DIMENSIONAL LIMITS APPLY</p> <p>AFTER APPLICATION OF FINISH</p> <p>DRAWING NOT TO SCALE</p> <p>TOLERANCE UNLESS OTHERWISE NOTED:</p> <p>ANGULAR +/- °</p> <p>XXXX +/- .010</p> <p>XXX +/- .015</p> <p>XX +/- .030</p> <p>X FOR REF. ONLY</p> <p>UNLESS OTHERWISE SPECIFIED</p> <p>ALL DIMENSIONS ARE IN INCHES</p>	<p>NOTICE:</p> <p>Use of this document is subject to a confidentiality and nondisclosure agreement with Great Lakes Case & Cabinet Co., Inc. (GLCC) and may not be reproduced, disclosed or utilized in whole or in part without prior written authorization from GLCC.</p>		<p>PART NUMBER</p> <p>GL15WMS-POLK</p>	<p>TITLE</p> <p>WALL MOUNT, NO SWING, 7RMU, SOLID DOOR, CUSTOM CONFIGURATION</p>
		<p>* CUSTOMER SIGN-OFF IS REQUIRED PRIOR TO MANUFACTURING.</p> <p>* BY SIGNING THIS APPROVAL, THE CUSTOMER AGREES THAT THIS ORDER CAN NOT BE CANCELED AND NO CUSTOM PRODUCTS CAN BE RETURNED.</p>	<p>QTY PER UNIT: 1</p> <p>MATERIAL TYPE:</p> <p>MATERIAL GAUGE:</p> <p>FINISH:</p> <p>DRAWN CD 3/31/08</p> <p>CHECKED JL 4/1/08</p>	<p>DWG NO:</p> <p>I-1271</p>	<p>REV</p> <p>3</p>