

Physical Access Control

# IMPLEMENTING MOBILE ACCESS IN 3 EASY STEPS



The use of mobile access control to enter buildings, premises, as well as car parks is fast becoming the norm.

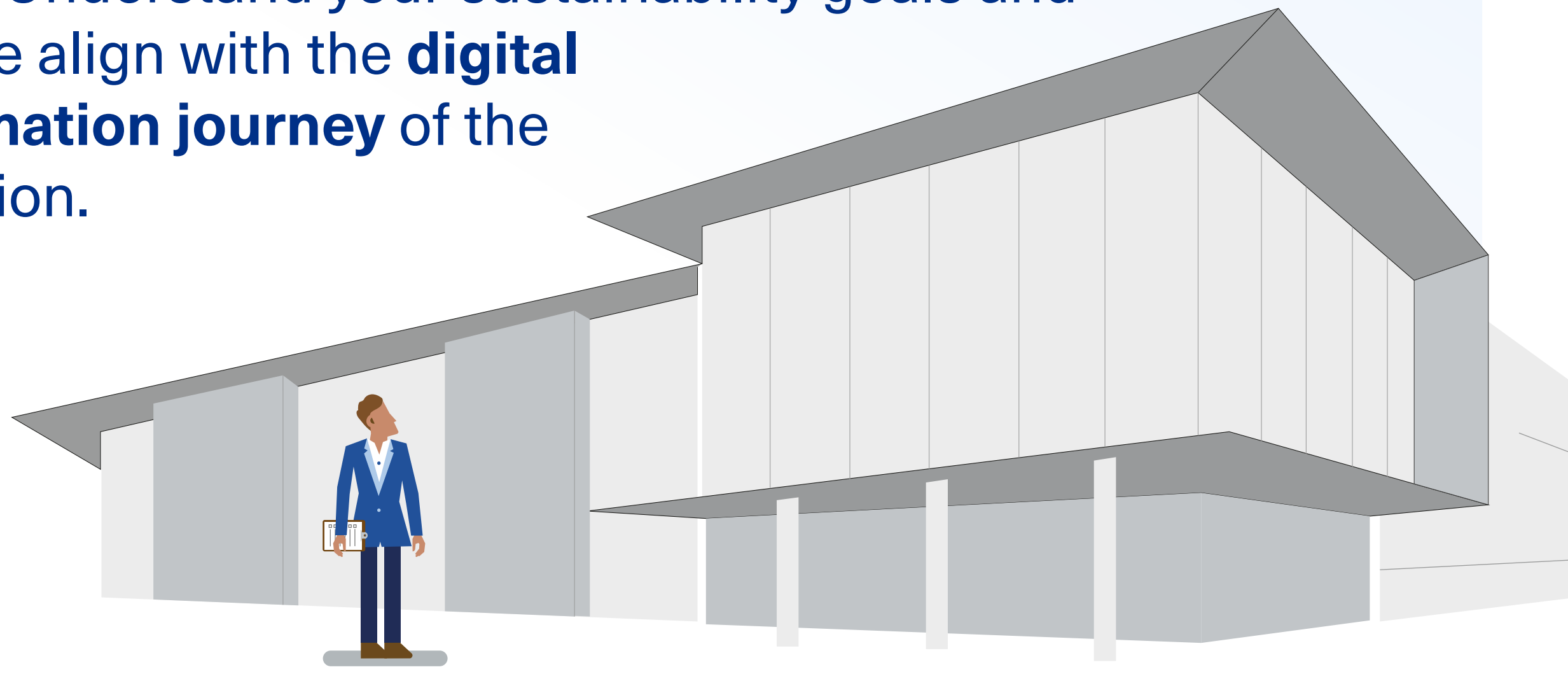
Most important, it is also revolutionizing employees' experiences in the work environment, whilst assisting organizations to achieve greater efficiency, along with digital transformation and sustainability goals.

The three steps outlined below provide a comprehensive and easy method to ensure you're ahead of the game.

## 1 Audit Your Current System

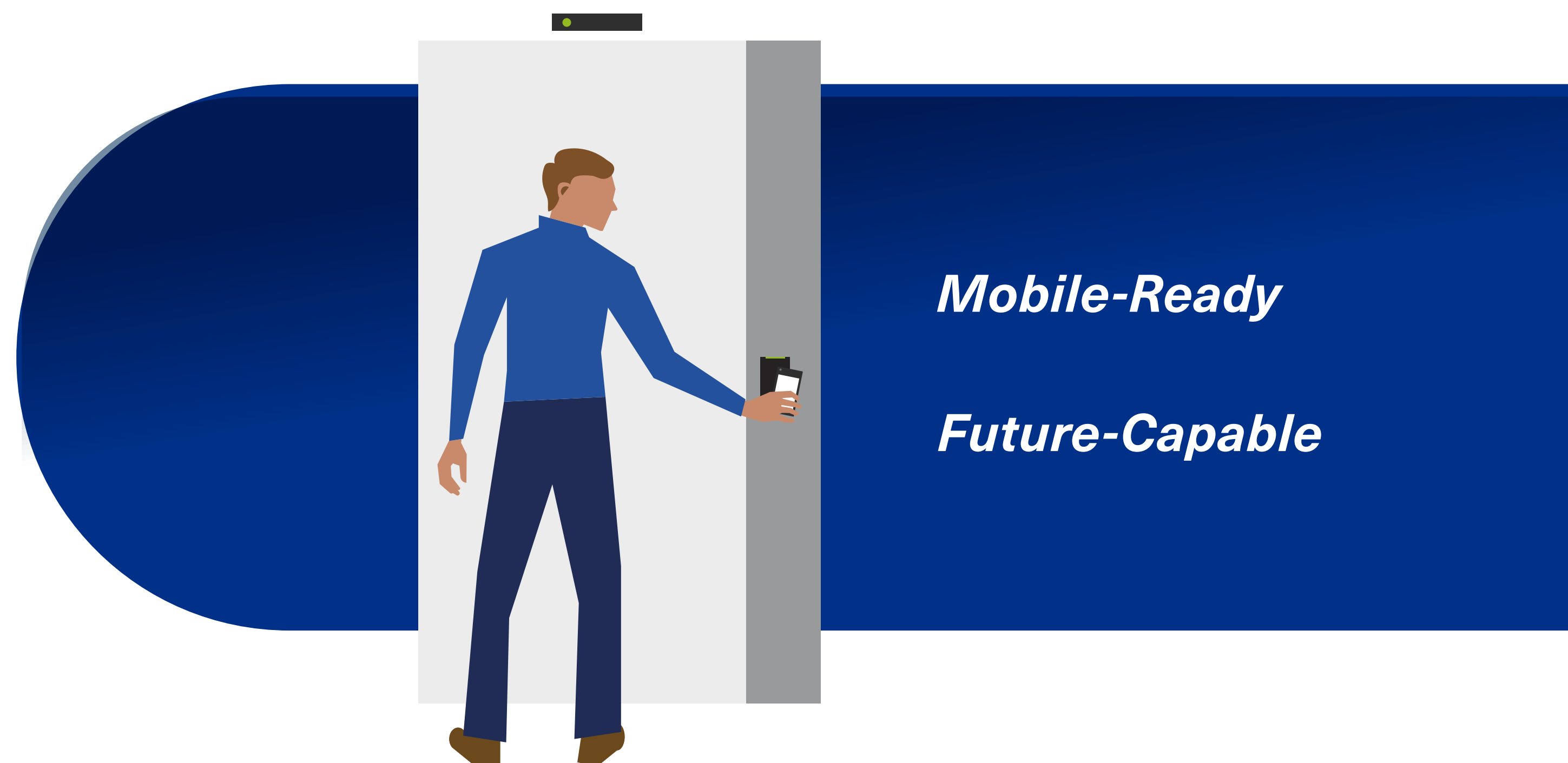
Asses your building's current physical access control infrastructure to determine the requirements for moving to mobile. This includes **auditing your devices**, to determine which readers you need to support to ensure your employees can make the most of HID Mobile Access.

Is your organization ready to deploy a mobile access control solution? Understand your sustainability goals and how these align with the **digital transformation journey** of the organization.



## 2 Upgrade Hardware

Upgrade or install your on-site hardware to match your mobile access requirements. If readers need to be replaced, make sure the new devices are mobile-ready and future-capable. This will ensure your investment is **safe for the long term**.



## 3 Issue Mobile IDs Over The Air

The final step in mobile access implementation is to issue mobile IDs to your staff. To ensure **smooth uptake** of your mobile access control system, this stage needs to be as easy as possible for your users.



[View the full eBook now](#)