



Wedge Clip



Bundling & Securing

Edge Clips

Wedge Clip

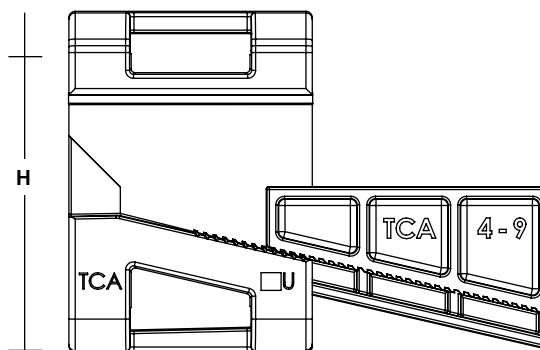
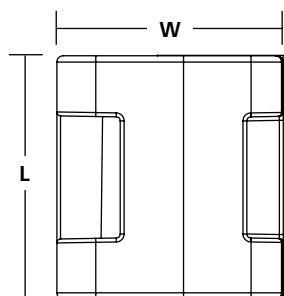
The Wedge Clip, paired with any HellermannTyton heavy duty cable tie, routes cables along a frame or rail in vertical or horizontal applications. A robust design and durable materials make it ideal for extreme-duty applications. The integrated wedge mechanism slides along a stepped grade until snug against the mounting surface. Inside the clip is a 3M™ VHB™ (Very High Bond) adhesive pad, which actually builds strength over time. This holds the clip to the work surface instantly, enabling installers to place it into position without worrying about it falling off prior to fastening. The combination of adhesive and the clip's vice-like compression result in incredible extraction force without the need to drill holes. The Wedge Clip is offered in three sizes.

Features and Benefits

- Two-piece ratcheting wedge design allows for easy, positive-locking size adjustment.
- Peel and stick 3M™ VHB™ adhesive inside clip increases grip and enables one-hand installation.
- Heat-stabilized, glass-filled PA66 assembly delivers remarkable extraction force without drilling.
- Three sizes cover a wide range of mounting thicknesses, reducing part inventory.
- 4-way, wide slot accommodates our heavy duty and Wide Strap Series Cable Ties.



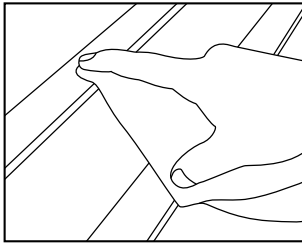
MATERIAL	Polyamide 6.6, heat stabilized, glass fiber reinforced (PA66HSGF30%)
Operating Temperature	-40°F to +284°F (-40°C to +140°C)
Flammability	UL 94 HB
Adhesive	Acrylic foam



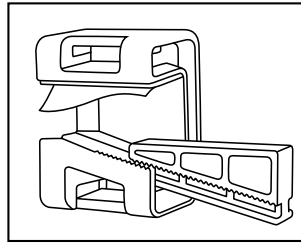
PART NO.	Type	Panel Thickness Max.		Panel Thickness Min.		Length L		Width W		Height H		Color	Pkg. Qty.
		in.	(mm)	in.	(mm)	in.	(mm)	in.	(mm)	in.	(mm)		
151-01565	BCAA	0.20	(5.0)	—	—	1.21	(30.8)	1.13	(28.60)	1.7	(43.10)	Black/Green	200
151-01566	BCBLGA	0.35	(9.0)	0.16	(4.0)	1.21	(30.8)	1.13	(28.60)	1.7	(43.10)	Black	200
151-01567	BCCLGA	0.51	(13.0)	0.31	(8.0)	1.21	(30.8)	1.13	(28.60)	1.7	(43.10)	Black/Gray	200

Dimensions are approximate and subject to change. Use **Part No.** for ordering and **Type** for specification purposes.
3M and VHB are trademarks of 3M Company.

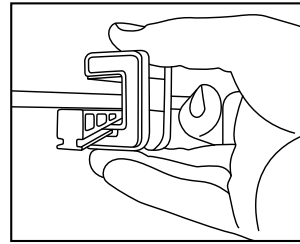
Instructions for Use



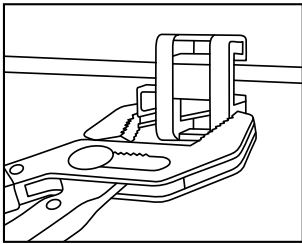
1. Thoroughly clean surface using a 50/50 mix of isopropanol and water for best results, as commercial cleaners may leave residue.



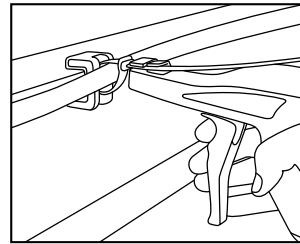
2. Peel off adhesive liner.



3. Move Wedge Clip into position, avoiding contact with adhesive. When satisfied with location, press adhesive pad firmly against work surface.



4. Using your hand or an adjustable pliers (e.g. CHANNELLOCK®), guide the wedge inward until secure – taking care not to over-torque the clip and distort its shape.



5. Apply cable tie to any of the three 4-way saddles using an EVO® 7 or EVO 9 tension and cutoff tool.

Need extra heavy duty performance from the Wedge Clip? Our Wide Strap Cable Tie perfectly fits the Wedge Clip's openings.

Heavy Duty Cable Ties

Wide Strap Cable Ties

The Heavy Duty Wide Strap Cable Tie was designed to minimize the pinching of soft bundles and the potential of lateral movement along the bundle. The low-profile head and underside clamping rails increase the grip around the bundle and provide a better fit than traditional cable ties. These are used primarily in the trucking and heavy equipment industries, but can be used in a wide variety of applications where strength is needed.

Features and Benefits

- Wider and thinner strap design increases flexibility, provides low insertion and minimizes pinching of bundles.
- Low-profile head with clamping rails provide compact bundling with a full circumferential compression around bundles.
- Bent tail allows for quick insertion into head or mounts.
- High-impact, heat and UV stabilized heavy duty cable ties contain an impact modifier allowing greater flexibility and greater resistance to vibration.



MATERIAL	Polyamide 6.6 high impact modified, heat and UV stabilized (PA66HIRHSUV)
Operating Temperature	-40°F to +230°F (-40°C to +110°C)
Flammability	UL 94 HB



RoHS ✓

PART NO.	Type	Min. Tensile Strength		Length L		Max. Ø Bundle		Width W		Color	Pkg. Qty.
		in.	(mm)	in.	(mm)	in.	(mm)	in.	(mm)		
111-12300	WSS	120	(535)	9.1	231	2.3	58.4	0.5	12.7	Black (BK)	300
111-12301	WSI	120	(535)	12.1	307	3.3	83.8	0.5	12.7	Black (BK)	300
111-12302	WSR	120	(535)	15.1	383	4.1	104.1	0.5	12.7	Black (BK)	300

Dimensions are approximate and subject to change. Use **Part No.** for ordering and **Type** for specification purposes.



**HellermannTyton North American
Corporate Headquarters**

7930 N. Faulkner Rd, PO Box 245017
Milwaukee, WI 53224-9517
Phone: (414) 355-1130, (800) 537-1512
Fax: (414) 355-7341, (800) 848-9866
email: corp@htamericas.com
www.hellermann.tyton.com

TS16949, AS9100, ISO 9001, and ISO14001 certified

HellermannTyton Canada

Unit #4, 205 Industrial Parkway North
Aurora, Ontario L4G 4C4 Canada
Phone: (800) 661-2461
Fax: (800) 390-3904
email: sales@hellermanntyton.ca

HellermannTyton Mexico

Anillo Periferico Sur 7980 Edificio 6A
Parque Industrial Tecnologico II
Santa María Tequepexpan
Tlaquepaque, Jalisco, Mexico 45601
Phone: 011-52-33-3-133-9880
Fax: 011-52-33-3-133-9861
email: info@htamericas.com.mx

ISO 9001 certified