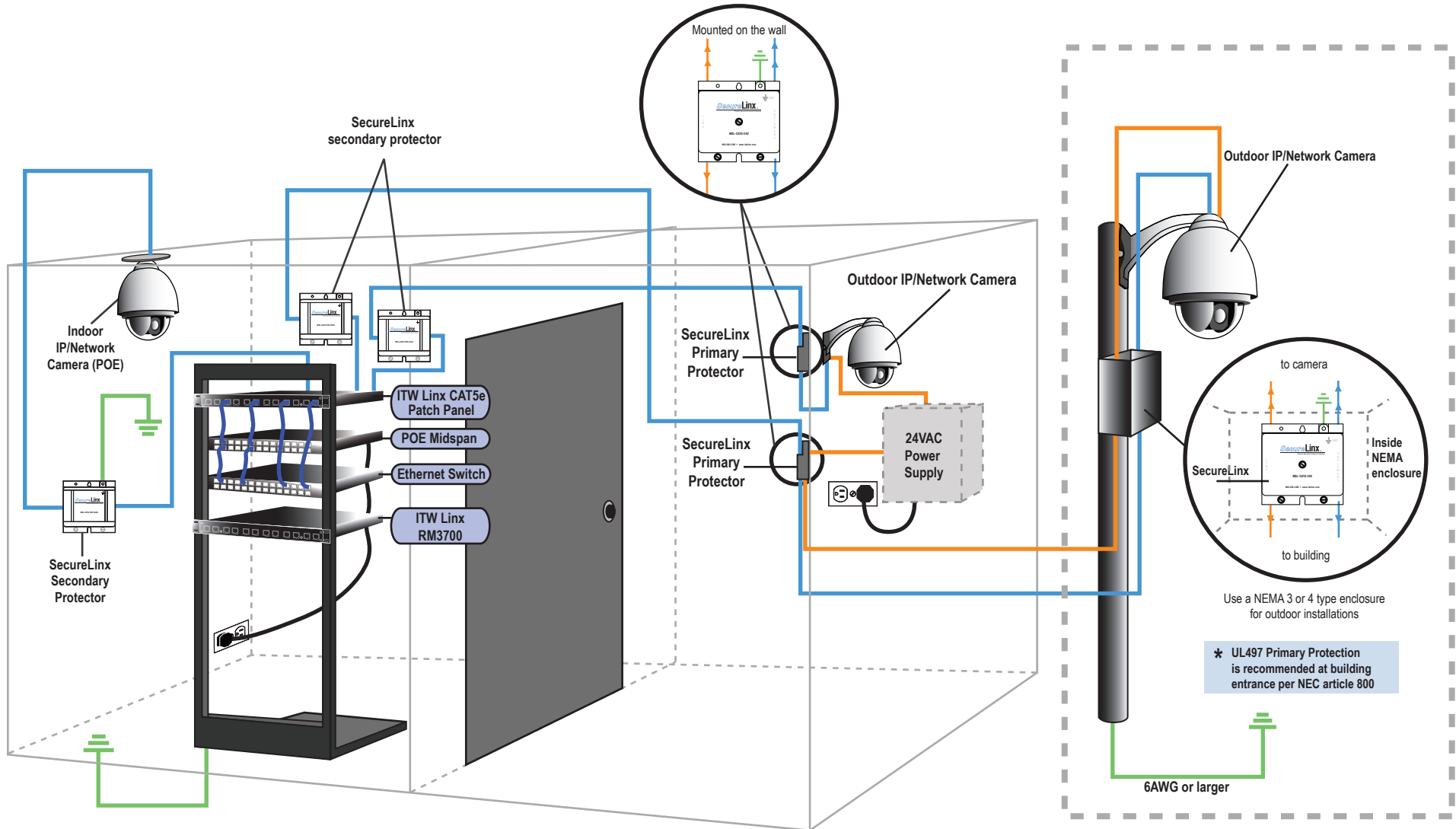


# IP/NETWORK CAMERA SURGE PROTECTION

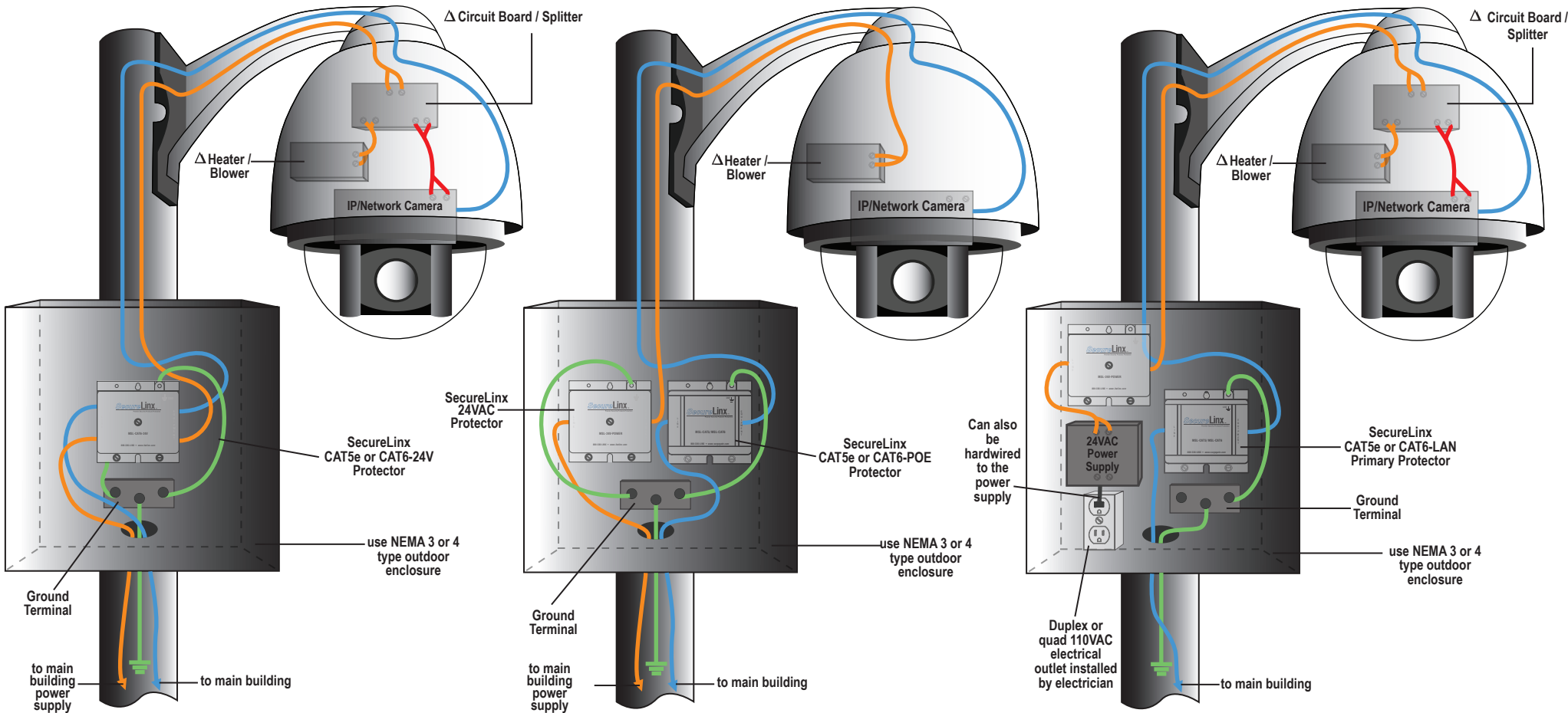
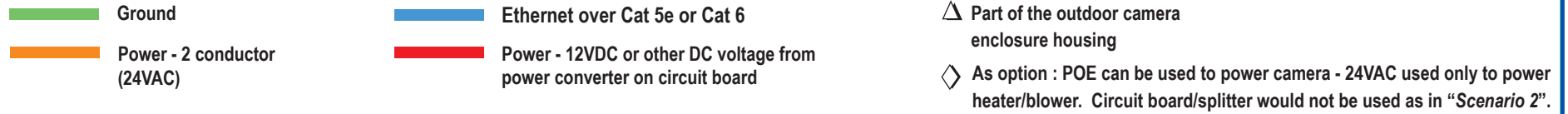
## SecureLinx Protectors:

- |                       |                   |
|-----------------------|-------------------|
| (1) MSL-CAT5-LAN-RJ45 | (5) MSL-CAT5-24V  |
| (2) MSL-CAT5-POE-RJ45 | (6) MSL-CAT6-24V  |
| (3) MSL-CAT6-LAN      | (7) MSL-24V-POWER |
| (4) MSL-CAT6-POE      | (8) DL1200-CAT5   |

- Ground
- Power - 2 conductor outdoor rated (24VAC)
- Ethernet over CAT5e or CAT6



# ITW LINX SURGE... PROTECTING YOUR INVESTMENTS



**Scenario 1:** Both camera and heater/blower in the camera housing are powered by a single run of 24VAC from the main building. (POE not used to power camera). Protect Ethernet and Power All in one.

**Scenario 2:**

- Camera powered by POE.
- Heater/blower powered by a single run of 24VAC from the main building (POE used to power camera)
- Protect Ethernet-POE and power separately

**Scenario 3:** Powering camera and heater/blower in outdoor camera housing when 110 VAC is available at the pole. Both camera and heater/blower are powered by 24VAC (◇POE not used at camera)