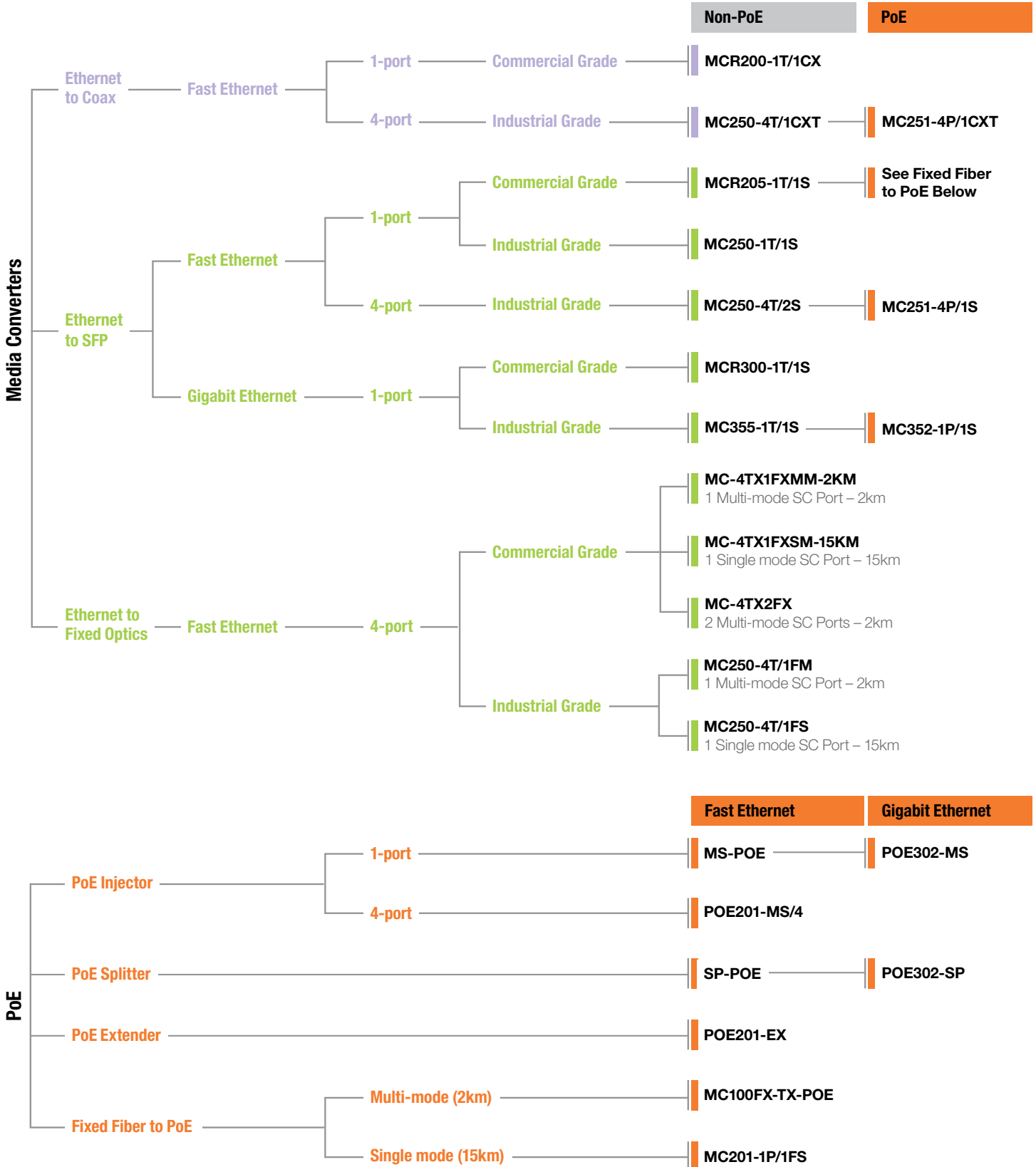


## Media Converters

To facilitate the migration from analog to IP-centric networks, IFS media converters provide cost-effective solutions for extending Ethernet transmission while reducing cable and labor cost.



# Media Converters Selection Guide



Ethernet to Coax	MCR Series Compatible	Hardened	Fast Ethernet	Gigabit Ethernet	Coax	POTS Wire	Optical Fiber or SFPs	PoE	Recommended Power Supply
MCR200-1T/1CX	•		•		•				PS5VDC2A-US
MC250-4T/1CXT		•	•		•	•			PS12VDC1.5A-U
MC251-4P/1CXT		•	•		•	•		AF (15.W)	HLG-240-48 PS48VDC100W-DIN
<b>Ethernet to Fiber</b>									
MCR205-1T/1S	•		•				S20 Series		PS5VDC2A-US
MC100FX-TX-POE			•				MM – 2km	AF (15.W)	PS48VDC.38A-US
MC201-1P/1FS			•				SM – 15km	AF (15.W)	PS48VDC.38A-US
MC-4TX1FXMM-2KM			•				MM – 2km		PS12VDC1.5A-U
MC-4TX1FXSM-15KM			•				SM – 15km		PS12VDC1.5A-U
MC-4TX2FX			•				MM – 2km		PS12VDC1.5A-U
MCR300-1T/1S	•			•			S30 Series		PS5VDC2A-US
<b>Industrial Ethernet to Fiber</b>									
MC250-1T/1S		•	•				S20/S25 Series		PS12VDC1.5A-U
MC250-4T/1FM		•	•				MM – 2km		PS12VDC1.5A-U
MC250-4T/1FS		•	•				SM – 15km		PS12VDC1.5A-U
MC251-4P/1S		•	•				S20/S25 Series	AF (15.W)	HLG-240-48 PS48VDC100W-DIN
MC250-4T/2S		•	•				S20/S25 Series		PS12VDC1.5A-U
MC355-1T/1S		•		•			S30/S35 Series		PS12VDC1.5A-U
MC352-1P/1S		•		•			S20/S25 or S30/S35 Series	AT (30W)	HLG-240-48 PS48VDC100W-DIN
<b>MCR Card Cage</b>									
MCR-R15	•								MCR-RPS
MCR-RPS	•								

## PoE Comparison Matrix

PoE Splitters	Fast Ethernet	Gigabit Ethernet	PoE-af 15.4 W	PoE-at 30 W	Optical Fiber	No PS Required	Recommended Power Supply
SP-POE	•		•			•	N/A
POE302-SP		•		•		•	N/A
<b>PoE Injectors</b>							
MS-POE	•		•				PS48VDC.38A-US
POE302-MS		•		•			PS56VDC65W-US
POE201-MS/4 (4-port)	•		•				PS48VDC65W-US
<b>PoE Extender</b>							
POE201-EX	•		•			•	N/A
<b>PoE to Fiber</b>							
MC100FX-TX-POE	•		•		MM – 2km		PS48VDC.38A-US
MC201-1P/1FS	•		•		SM – 15km		PS48VDC.38A-US



interlogix.com

Specifications subject to change without notice.

© 2013 Interlogix. All rights reserved.  
210-3581 2013/03 (71988)