

HDF3168 Fiber Distribution System

A high-density fiber optic frame that prepares the data center for growth, minimizes patching footprint, reduces installation time, and saves you money.





HDF3168

FIBER DISTRIBUTION SYSTEM

The Leviton high-density HDF3168 Fiber Distribution System is a main cross-connect or inter-connect frame that can handle up to 3168 fibers using LC in just one tile of floor space. Ideal for service providers, central office facilities, large enterprise and cloud data centers, the HDF3168 Fiber Distribution System will reduce your patching footprint, free up valuable space, and save you money. Separated trunk cable, and patch cord management improves accessibility and enables easy moves, adds, and changes. In addition, the system is fully scalable and modular, supporting consolidation and growth.

INDUSTRY-LEADING DENSITY

The HDF system accomplishes such high density through its unique patch deck design. One frame holds up to 22 decks, each configured with your choice of HDX cassettes, HDX adapter plates, or injection-molded splice trays.



Caption



Caption



BUILT-IN CABLE MANAGEMENT & ROUTING

The frame keeps pathways clean and organized, using integrated cable management for minimum bend radius, better slack storage, and protection within the frame. Patch decks contain patch cord and MTP® trunk routing for individual trays. And enhanced labeling improves deck and fiber identification to simplify moves, adds, or changes. Use of one patch cord length (3m) for cross-connect within frame.

SUPERIOR SCALABILITY

HDF3168 frames can be ganged together easily and handle future growth with pass-through cross-frame routing kits. And with 24-fiber MTP connectivity, they are ideal for migration from 10G to 40G to 100G and beyond.

ADDITIONAL SECURITY

The HDF frame includes rear doors that lock to protect and conceal trunk cabling. Locking front doors (sold separately) are transparent to allow visibility.

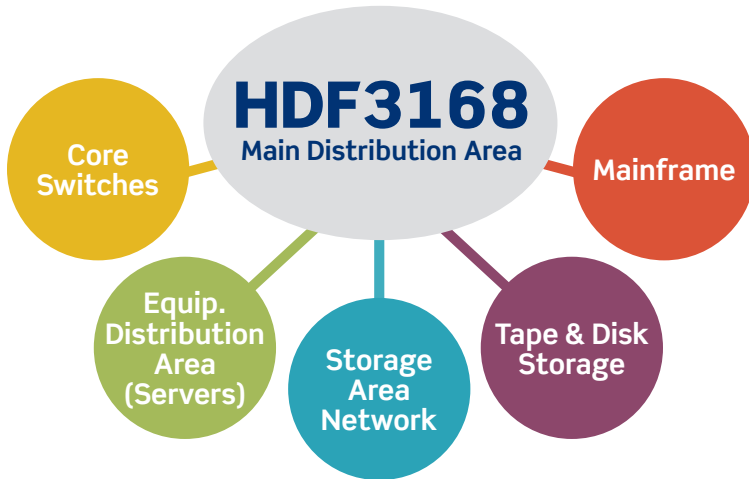
EASY ACCESSIBILITY

The frame's open design greatly reduces time and labor for maintenance, as it allows unobstructed access to patch cord connections on the cassettes and adapter plates. And the one-tile footprint makes it easier to access the space beneath a raised floor.



HDF3168 FIBER DISTRIBUTION SYSTEM | Space Savings

Data center infrastructure standards like TIA-942 recommend driving all network cabling back to patching in the main distribution area, or MDA. Following these standards, the HDF3168 is designed to be installed in the MDA, serving as the **main cross-connect patching location** for all fiber channels in the data center. It can support cabling from network servers, core switches, the SAN, mainframe, and disk or tape storage.



HDF3168 CAPACITY CHART (Based on use of 48-fiber trunks)	
CONNECTIVITY	MAX. FIBER STRANDS
LC	3,168
SC	1,584
12-Fiber MTP®	7,776
24-Fiber MTP®	15,552

The HDF3168 Frame consolidates patching for all fiber channels in the data center into an incredibly small footprint. Since it doesn't require the use of standard 19" cabinets which often require additional width and depth, it uses less space for patching. And as the frame occupies only one floor tile, it's easy to access space beneath a raised floor.

By reducing overall floor-space requirements, the HDF system creates significant yearly cost savings.



2' x 2' Footprint

Examples of **Yearly Savings** with the **HDF3168**

* Assumes typical cabinet is 48" D x 32" W, 42RU (36U usable)
Data center cost per month per square foot is \$50

Example 1: Small-to-Medium Data Center, with Top-of-Rack Patching

Zones in DC Server Cabinets, SAN, Core Switch, other	Total Number of Cabinets/Devices 83	Total Number of Channels 1,328
--	---	--

Traditional vs HDF3168	Traditional MDA			
	RU Required	Number of Cabinets	Sq. Ft.	First Year Cost
	176	5	53.35	\$32,010
	HDF MDA			
	Decks Required	Number of HDF Frames	Sq. Ft.	First Year Cost
	46	3	12	\$7,200

SAVINGS

with the **HDF3168**

Percent

345%

Sq. Ft.

41.4

First Year Savings

\$24,810

Calculate your Yearly Savings at apps.leviton.com/hdfcalculator

Example 2: Large Data Center

Zones in DC Server Cabinets, Network Switches, SAN, Storage, Tape	Total Number of Cabinets/Devices 162	Total Number of Fiber Channels 16,536
---	--	---

Traditional vs HDF3168	Traditional MDA			
	RU Required	Number of Cabinets	Sq. Ft.	First Year Cost
	702	20	213	\$128,040
	HDF MDA			
	Decks Required	Number of HDF Frames	Sq. Ft.	First Year Cost
	258	12	48	\$28,800

SAVINGS

with the **HDF3168**

Percent

345%

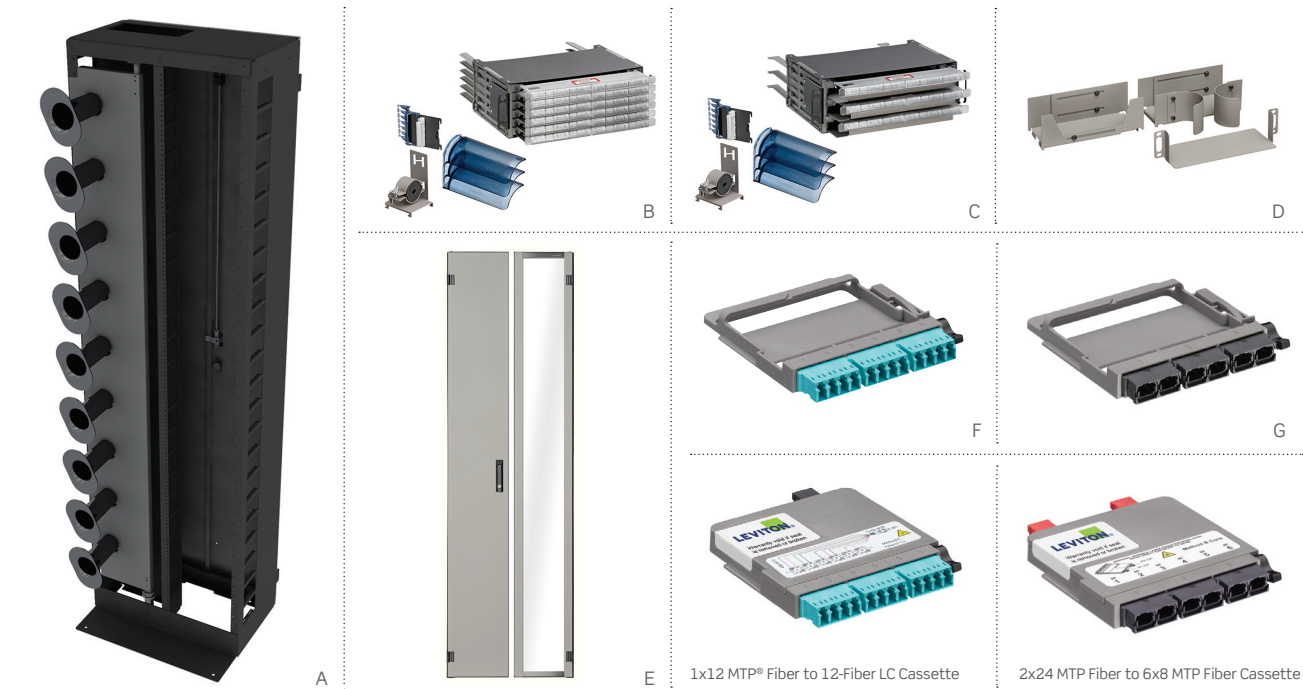
Sq. Ft.

165

First Year Savings

\$99,240

Calculate your Yearly Savings at apps.leviton.com/hdfcalculator



FIBER DISTRIBUTION FRAME

- Integrated cable management and routing solutions for minimum bend radius, better slack storage, and protection
- Holds up to 22 decks, each can be configured with cassettes, adapter plates, or splice trays
- Lockable rear doors included to protect and conceal trunk cabling
- Optional front door kits (sold separately) are transparent and lockable for additional security
- Occupies only one 2-foot square tile
- Seismic certified to GR-63-CORE, Zone 4, cULus 2416 Listed

PATCH DECK

- Modular 3.5" deck accepts up to 144 fibers (using LC) capacity
- Holds 6 independent sliding and removable trays and accepts up to 12 MTP® cassettes or adapter plates
- Magnifying port identification label holders for better visibility
- Integrated minimum bend radius protection

SPLICE DECK

- Modular 3.5-inch-high deck accepts up to three independent splice trays
- Sliding trays are removable for ease of splicing
- Heat-shrink fusion splicing of individual 250 μm or 900 μm tight-buffer fibers for up to 144 fibers per deck
- Mass ribbon fusion splicing available as custom order

HDX ADAPTER PLATES

- Connect to field-terminated backbone cabling or pre-terminated trunks
- Easy one-hand installation and removal
- Offered in OM1/OM2, OM3/OM4, and OS2 fiber types
- LC, SC, and MTP styles in 6, 12, or up to 72/144-fiber configurations are available
- Visible sequential numbering to identify ports (for Tx and Rx)

HDX MTP CASSETTES

- 12- or 24-fiber MTP configurations
- Select from LC or MTP connectors for 10G, 40G, or 100G applications
- Configure up to 48 fibers for 24 channels (10G) and 6 channels (40G)
- Easy to migrate from 10G to 40/100G when used with Opt-X® Unity trunks, harnesses, or patch cords
- Pre-terminated fiber eliminates the need for complicated field terminations and splices
- A variety of fiber types are available including single-mode, multimode, and laser-optimized multimode
- Easy, one-hand installation and removal



HDF3168 FIBER OPTIC DISTRIBUTION SYSTEM

DESCRIPTION	PART NO.
[A] Fiber Distribution Frame, 7' H x 2' W x 2' D	F3168-22F
[B] Patch Deck, 2RU, empty (includes horizontal cable management and cable clamp kit)	F3168-DCK
[C] Splice Deck, 2RU, empty (includes horizontal cable management and cable clamp kit)	F3168-SPD
[D] Cross-Frame Routing Kit	F3168-CFR
[E] Front Doors Kit	F3168-FDR
Cable Clamp Kit (for additional fiber trunks)	F3168-CCK
Seismic Zone 4 Kit	F3168-EQK
2RU Blank Panel (for frame)	F3168-BLK

HDX ADAPTER PLATES

Adapter Plate, OM1 & OM2, Quad LC (Beige), 12 fibers, phosphor bronze sleeve	5FUHD-2IL
[F] Adapter Plate, OM3 & OM4, Quad LC (Aqua), 12 fibers, zirconia ceramic sleeve	5FUHD-2QL
Adapter Plate, OS2, Quad LC (Blue), 12 fibers, zirconia ceramic sleeve	5FUHD-2LL
Adapter Plate, OM1 & OM2, Duplex SC (Beige), 6 fibers, phosphor bronze sleeve	5FUHD-6IC
Adapter Plate, OM3 & OM4, Duplex SC (Aqua), 6 fibers, zirconia ceramic sleeve	5FUHD-6QC
Adapter Plate, OS2, Duplex SC (Blue), 6 fibers, zirconia ceramic sleeve	5FUHD-6LC
Adapter Plate, 3 Duplex MTP Adapters (Black), key up/key up	5FUHD-6MB
[G] Adapter Plate, 3 Duplex MTP Adapters (Black), key up/key down	5FUHD-6MP
Adapter Plate, blank (Black)	5FUHD-BLK
24-fiber Heat Shrink Style Molded Splice Tray (includes 60 mm splice sleeves)	T5PLS-24F

Make to order! HDF3168 FRAME OPTIONS

# OF PATCH DECKS	# OF CASSETTES OR ADAPTER PLATES PER PATCH DECK	FIBER COUNT	FIBER TYPE	CASSETTE/PLATE CONNECTOR TYPE (FRONT)	CASSETTE/PLATE CONNECTOR TYPE (REAR)	CASSETTE POLARITY	FRONT DOORS KIT
• 1-22	• 1-12	<ul style="list-style-type: none"> • 12 • 24 • 48 	<ul style="list-style-type: none"> • OM2 • OM3 • OM4 • OS2 	<ul style="list-style-type: none"> • LC • SC • MTP 	<ul style="list-style-type: none"> • LC (Plate) • SC (Plate) • MTP (Plate) • 12-Fiber MTP • 24-Fiber MTP 	<ul style="list-style-type: none"> • Method A • Method B, Core • Method B, Edge • Method C 	<ul style="list-style-type: none"> • Yes • No

Make to order! HDF3168 PATCH DECK OPTIONS

# OF CASSETTES OR ADAPTER PLATES PER DECK	CASSETTE FIBER COUNT	FIBER TYPE	CASSETTE/PLATE CONNECTOR TYPE (FRONT)	CASSETTE/PLATE CONNECTOR TYPE (REAR)	CASSETTE POLARITY
• 1-12	<ul style="list-style-type: none"> • 12 • 24 • 48 	<ul style="list-style-type: none"> • OM2 • OM3 • OM4 • OS2 	<ul style="list-style-type: none"> • LC • SC • MTP 	<ul style="list-style-type: none"> • LC (Plate) • SC (Plate) • MTP (Plate) • 12-Fiber MTP • 24-Fiber MTP 	<ul style="list-style-type: none"> • Method A • Method B, Core • Method B, Edge • Method C

Make to order! HDX MTP CASSETTE OPTIONS

FIBER TYPE	FIBER COUNT	CONNECTOR TYPE (FRONT)	MTP TYPE (REAR)	POLARITY
• OM2	• 12	• LC	• 12-Fiber MTP	• Method A
• OM3	• 24	• MTP	• 24-Fiber MTP	• Method B, Core
• OM4	• 48			• Method B, Edge
• OS2				• Method C

For Method B polarity, you must order one each of the Core and Edge cassettes.

For assistance customizing your cassettes, please visit leviton.com/configurator or call Tech Support at 800.824.3005.



THE SMART CHOICE FOR A BETTER NETWORK

High-performance connectivity backed by the industry's best service and support

We invent the industry's best technologies. We build them to last. And we stand behind every product and every installation – delivering industry-leading performance and unbeatable service and support – throughout the life of your structured cabling system. Add in the peace of mind that comes from working with a stable, century-old supplier and you get far and away the highest return on investment in the industry.

Leviton Network Solutions Division Headquarters
leviton.com/networksolutions
2222-222nd Street S.E., Bothell, WA 98021 USA

Inside Sales

T 800.722.2082
E insidesales@leviton.com

Technical Support

T 800.824.3005 / +1.425.486.2222
E appeng@leviton.com

International Inside Sales

T +1.425.486.2222
E intl@leviton.com

Leviton Corporate Headquarters
leviton.com

201 N. Service Road, Melville, NY 11747 USA

Customer Service

T 800.323.8920 / +1.631.812.6000
E customerservice@leviton.com

Leviton International Offices

Asia / Pacific

T +1.631.812.6228
E infoasean@leviton.com

China

T +852.2774.9876
E infochina@leviton.com

India / SAARC

T +91.80.4322.5678
E infoindia@leviton.com

Middle East & Africa

T +971.4.886.4722
E lmeinfo@leviton.com

Canada

T +1.514.954.1840
E pcservice@leviton.com

Colombia

T +57.1.743.6045
E infocolombia@leviton.com

Latin America

T +52.55.5082.1040
E lsamarketing@leviton.com

South Korea

T +82.2.3273.9963
E infokorea@leviton.com

Caribbean

T +1.954.593.1896
E infocaribbean@leviton.com

Europe

T +33.6.8869.1380
E infoeurope@leviton.com

Mexico

T +52.55.5082.1040
E lsamarketing@leviton.com

All Other International Inquiries

E international@leviton.com

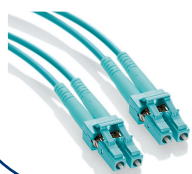


YOU MIGHT ALSO BE INTERESTED IN...



Fiber Raceway System

This easy to install cable management system provides a dedicated path for critical network cabling. Connection components snap together tool-free, saving time and money.



Premium Patch Cords & Pigtails

Premium Series Patch Cords and Pigtails feature advanced polishing and assembly techniques, with insertion loss and return loss tested to industry-leading standards.



Overhead Infrastructure Platform

A full overhead support for cabling pathways, power, lighting, and other infrastructure. Platforms can carry the load of cables and ladder trays while freeing up rack space by adding patching above cabinets or racks. Since racks and cabinets are not attached to the overhead infrastructure, power and cabling can be quickly disconnected from the cabinet without removing hardware.