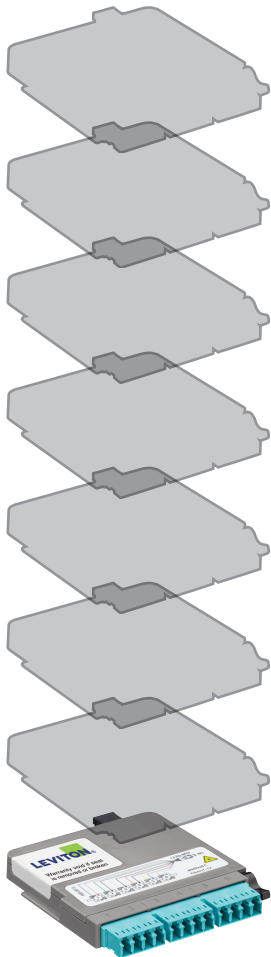
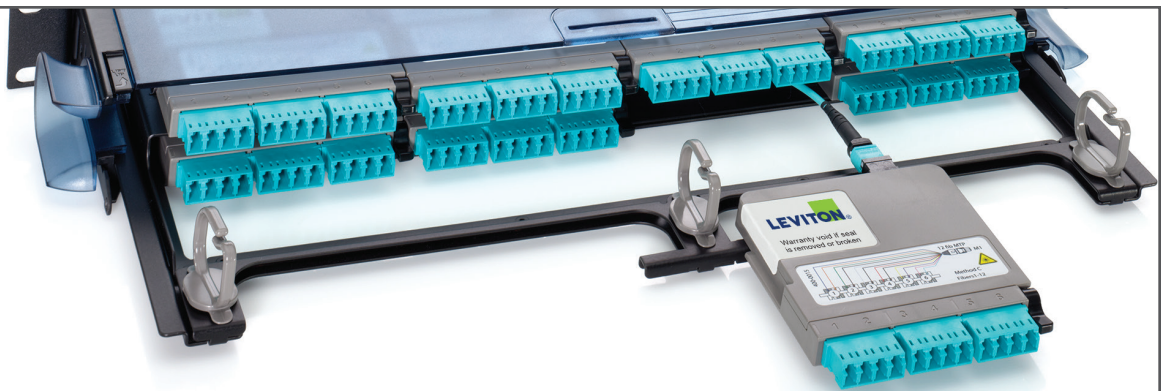


# The Opt-X<sup>®</sup> HD Enclosure System

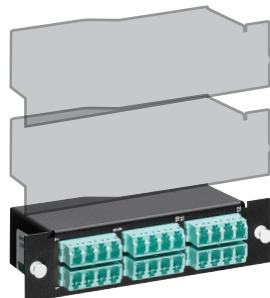
The density you need in the space you have



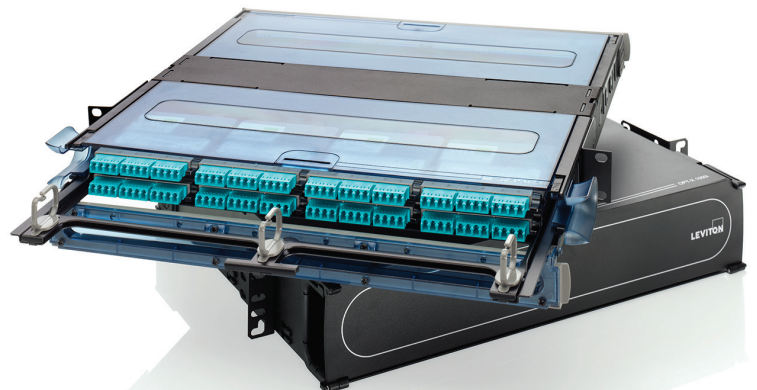
1RU Opt-X HD  
with MTP-LC Cassette

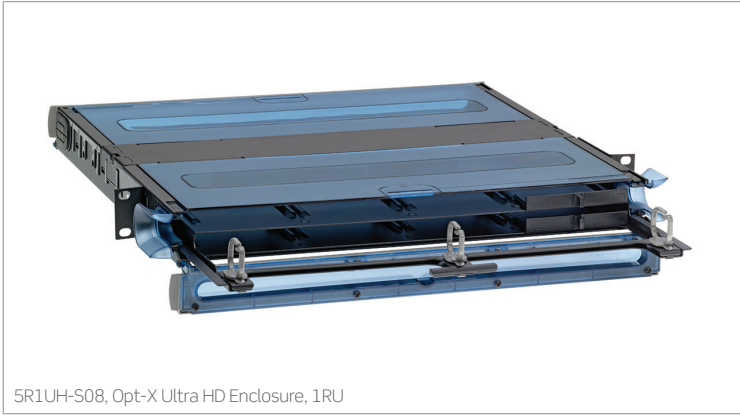
**33%**  
more fiber density  
in the **same space**  
with LC connectors

Data centers and telecommunications rooms are rapidly outgrowing their footprints to meet increasing network demands. Keep costs low and get up to 33% more density with LC connectors or 50% with MTP connectors using Leviton's Opt-X HD Enclosure System.

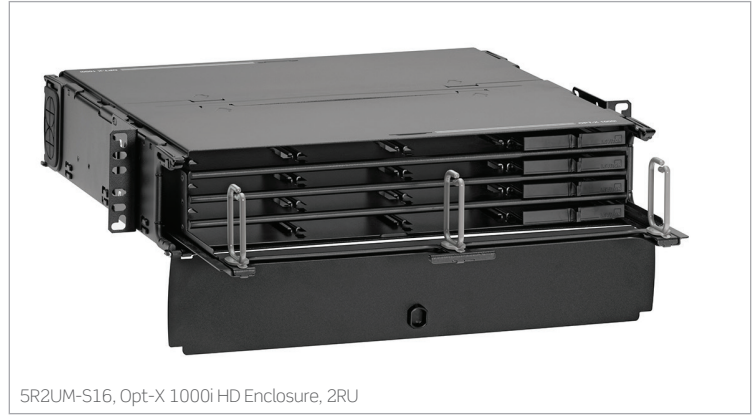


1RU Opt-X  
with MTP-LC Cassette





5R1UH-S08, Opt-X Ultra HD Enclosure, 1RU



5R2UM-S16, Opt-X 1000i HD Enclosure, 2RU

### ENCLOSURE DENSITY

Enclosure Type	Rack Unit	Fiber Capacity (Using LC)	Adapter Plate / MTP Cassette Capacity
OPT-X ULTRA HD	1	96	8
OPT-X ULTRA HD	2	192	16
OPT-X 1000i HD	1	96	8
OPT-X 1000i HD	2	192	16

## Opt-X® HD Enclosure System

### A part of the Opt-X Family

Leviton's popular Opt-X fiber enclosures, adapter plates, MTP® cassettes, and cable assemblies offer flexible connection and storage options for any project need. Now you can get all the classic Opt-X benefits and maximize port density within the same footprint with the Opt-X HD Enclosure System. This new system features of compact Opt-X Evolve cassettes and adapter plates that fit into high-density enclosures to create a scalable platform for enterprise and data center applications.

### Opt-X Ultra® HD Fiber Rack-Mount Enclosure

Not your typical black box, the stylish and innovative design features a sliding tray that glides forward, backward, or can be removed completely for easy field termination and accessibility. The 17" depth is perfect for high density fiber applications such as data centers in the MDA, HDA, and EDA space. Innovative cable management options allow for easy moves, adds, and changes.

### Opt-X 1000i HD Fiber Rack-Mount Enclosure

The 1000i HD Enclosure has a simplified look and similar features to the Opt-X Ultra HD Enclosure. This enclosure is ideal for data centers as well as smaller facilities, such as equipment rooms and telecommunication rooms.

Already have an existing Opt-X Ultra or 1000i enclosure?

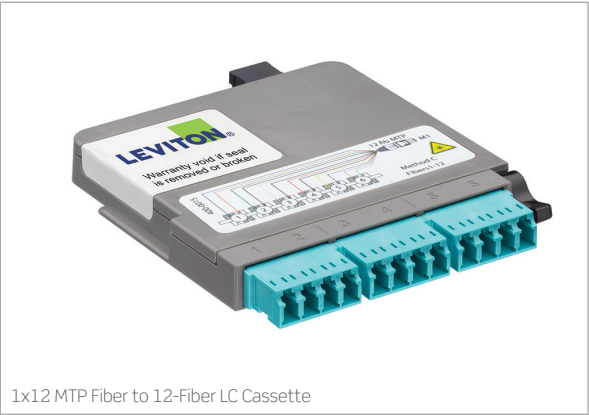
Retrofit trays are available to upgrade your current 1RU or 2RU enclosure to accept Opt-X Evolve high density cassettes and adapter plates.



### ENCLOSURES AND TRAYS

Description	Part Number
Opt-X Ultra HD 1RU Enclosure, empty, with sliding tray	5R1UH-S08
Opt-X Ultra HD 2RU Enclosure, empty, with sliding tray	5R2UH-S16
Opt-X 1000i HD 1RU Enclosure, empty, with sliding tray	5R1UM-S08
Opt-X 1000i HD 2RU Enclosure, empty, with sliding tray	5R2UM-S16
Retrofit sliding tray, 1RU (for use with Opt-X Ultra or 1000i)	5R1UR-TRY
Retrofit sliding tray, 2RU (for use with Opt-X Ultra or 1000i)	5R2UR-TRY

Enclosures can be pre-configured with cassettes or adapter plates. Call 800.722.2082 or visit [leviton.com](http://leviton.com)



1x12 MTP Fiber to 12-Fiber LC Cassette

# The Opt-X® HD Enclosure System

The density you need in the space you have



2x12 MTP Fiber to 3x8 MTP Fiber Cassette



1x24 MTP Fiber to 3x8 MTP Fiber Cassette



2x24 MTP Fiber to 6x8 MTP Fiber Cassette

### Opt-X Evolve MTP® Cassettes

Opt-X Evolve MTP Cassettes are pre-terminated, pre-tested, and come with 12- or 24-fiber MTP configurations. Cassettes are custom-built to your specifications — select from LC or MTP connectors for 10G, 40G, or 100G applications.

- LC connector cassettes provide a 33% increase in density, and MTP connector type cassettes provide a 50% increase
- Configure up to 48 fibers for 24 channels (10G) and 6 channels (40G)
- Easy to migrate from 10G to 40/100G when used with Opt-X Unity trunks, harnesses, or patch cords
- Pre-terminated fiber eliminates the need for complicated field terminations and splices
- A variety of fiber types are available including single-mode, multimode, laser optimized multimode
- Easy one-hand installation and removal

### Opt-X Evolve Fiber Adapter Plates

Opt-X Evolve adapter plates connect to field-terminated backbone cabling or pre-terminated trunks. Adapter plates are offered in LC, SC, and MTP styles in 6, 12, or up to 72/144 fiber configurations.

- Easy one-hand installation and removal
- Offered in OM1/OM2, OM3/OM4, and OS2 fiber types
- Visible sequential numbering to identify ports (for Tx and Rx)

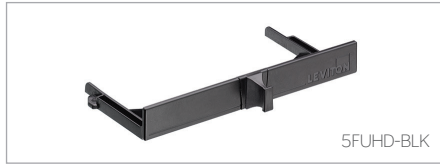
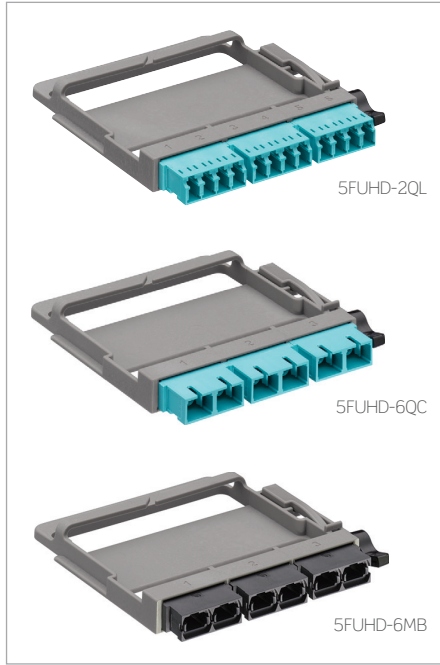
### ADAPTER PLATES

Description	Part Number
Opt-X Evolve Adapter Plate, OM1 & OM2, Quad LC (Beige), 12 fibers, Phosphor Bronze Sleeve	5FUHD-2IL
Opt-X Evolve Adapter Plate, OM3 & OM4, Quad LC (Aqua), 12 fibers, Zirconia Ceramic Sleeve	5FUHD-2QL
Opt-X Evolve Adapter Plate, OS2, Quad LC (Blue), 12 fibers, Zirconia Ceramic Sleeve	5FUHD-2LL
Opt-X Evolve Adapter Plate, OM1 & OM2, Duplex SC (Beige), 6 fibers, Phosphor Bronze Sleeve	5FUHD-6IC
Opt-X Evolve Adapter Plate, OM3 & OM4, Duplex SC (Aqua), 6 fibers, Zirconia Ceramic Sleeve	5FUHD-6QC
Opt-X Evolve Adapter Plate, OS2, Duplex SC (Blue), 6 fibers, Zirconia Ceramic Sleeve	5FUHD-6LC
Opt-X Evolve Adapter Plate, 3 Duplex MTP Adapters (Black), keyed up to keyed up	5FUHD-6MB
Opt-X Evolve Adapter Plate, 3 Duplex MTP Adapters (Black), keyed up to keyed down	5FUHD-6MP
Opt-X Evolve Adapter Plate, blank (Black)	5FUHD-BLK

### OPT-X EVOLVE MTP CASSETTE OPTIONS

Fiber Type	Fiber Count	Connector Type (Front)	MTP Type (Rear)	Polarity
• OM2	• 12	• LC	• M1 (12F)	• Method A
• OM3	• 24	• MTP	• M2 (24F)	• Method B (Core)
• OM4	• 48			• Method B (Edge)
• OS2				• Method C

Configure your MTP Cassettes at [www.leviton.com/configurator](http://www.leviton.com/configurator) or call 800.722.2082.



# THE SMART CHOICE FOR A BETTER NETWORK

## High-performance connectivity backed by the industry's best service and support

We invent the industry's best technologies. We build them to last. And we stand behind every product and every installation – delivering industry-leading performance and unbeatable service and support – throughout the life of your structured cabling system. Add in the peace of mind that comes from working with a stable, century-old supplier and you get far and away the highest return on investment in the industry.

**Leviton Network Solutions Division Headquarters**  
[leviton.com/networksolutions](http://leviton.com/networksolutions)  
2222-222nd Street S.E., Bothell, WA 98021 USA

**Inside Sales**

T 800.722.2082  
E [insidesales@leviton.com](mailto:insidesales@leviton.com)

**Technical Support**

T 800.824.3005 / +1.425.486.2222  
E [appeng@leviton.com](mailto:appeng@leviton.com)

**International Inside Sales**

T +1.425.486.2222  
E [intl@leviton.com](mailto:intl@leviton.com)

**Leviton Corporate Headquarters**  
[leviton.com](http://leviton.com)  
201 N. Service Road, Melville, NY 11747 USA

**Customer Service**

T 800.323.8920 / +1.631.812.6000  
E [customerservice@leviton.com](mailto:customerservice@leviton.com)

### Leviton International Offices

**Asia / Pacific**

T +1.631.812.6228  
E [infoasean@leviton.com](mailto:infoasean@leviton.com)

**Canada**

T +1.514.954.1840  
E [pcservice@leviton.com](mailto:pcservice@leviton.com)

**Caribbean**

T +1.954.593.1896  
E [infocaribbean@leviton.com](mailto:infocaribbean@leviton.com)

**China**

T +852.2774.9876  
E [infochina@leviton.com](mailto:infochina@leviton.com)

**Colombia**

T +57.1.743.6045  
E [infocolombia@leviton.com](mailto:infocolombia@leviton.com)

**Europe**

T +33.6.8869.1380  
E [infoeurope@leviton.com](mailto:infoeurope@leviton.com)

**India / SAARC**

T +91.80.4322.5678  
E [infoindia@leviton.com](mailto:infoindia@leviton.com)

**Latin America**

T +52.55.5082.1040  
E [lsamarketing@leviton.com](mailto:lsamarketing@leviton.com)

**Mexico**

T +52.55.5082.1040  
E [lsamarketing@leviton.com](mailto:lsamarketing@leviton.com)

**Middle East & Africa**

T +971.4.886.4722  
E [lmeinfo@leviton.com](mailto:lmeinfo@leviton.com)

**South Korea**

T +82.2.3273.9963  
E [infokorea@leviton.com](mailto:infokorea@leviton.com)



### All Other International Inquiries

E [international@leviton.com](mailto:international@leviton.com)

## You might also be interested in...



### Fiber Optic Patch Cords

Find the right patch cord for any application, with multimode and single-mode cords available in LC, MTP, SC, ST, or hybrid options. Offerings also include options for faster delivery times and economy pricing.

[www.leviton.com/fiberassemblies](http://www.leviton.com/fiberassemblies)



### Opt-X<sup>®</sup> Unity 40/100G Fiber Optic System

Prepare for high speed applications with the Leviton Opt-X Unity 40/100G Fiber System — a single, simple connectivity solution that makes it easy to migrate to 40/100G speeds.

[www.leviton.com/unity](http://www.leviton.com/unity)



### Secure Connectivity Solutions

Prevent unauthorized changes with the Secure Keyed LC Fiber System and Secure RJ Copper System. The assemblies lock into ports and require a matching-color extraction tool to remove.

[www.leviton.com/secureconnectivity](http://www.leviton.com/secureconnectivity)