

# Overhead Infrastructure Platform

## Pathway Support, Routing, and Zero-U Patching



Leviton's Overhead Infrastructure Platform provides a fully independent pathway support for network lighting, power, cabling, and other infrastructure. Platforms can carry the load of cables and ladder trays while **FREEING UP RACK SPACE** by adding patching above cabinets or racks. Since cabinets and racks are not attached to the overhead infrastructure, power and cabling can be quickly disconnected without removing hardware.





## Components required for typical 8' section:

### Frame

- 2 Overhead Infrastructure Platform Kits (4 uprights, 2 crossbars)
- 2 Channel Attachment Bracket Kits (4 brackets)
- 2 10' steel channels (Unistrut® recommended, sold separately)

### Recommended Accessories

- 2 Sub-floor Mounting Kits (for raised floor)
- 2 Patch Panel Brackets
- 2 C-brackets (for mounting cable tray, ladder or raceway)

## Features

- Works with any cabinet, rack, cable tray, ladder or raceway
- System accessories require no rack unit space
- Enables offline cabinet build-out
- Ideal for high ceiling data centers
- Allows unobstructed access to overhead cabling. Makes frequent moves, adds, and changes easy.
- Faster deployment, decommissioning or replacement of server cabinets
- Reduced installation costs and fewer on-site problems
- Allows expansion without disruption of current operations
- Complies with TIA-569, cULus Listed, and meets ANSI STANDARD T1.336-2003 Tier 1 Universal Telecom Framework
- Includes industry-compliant bonding and grounding points
- Compatible with Leviton's Fiber Raceway System

## Platforms (Includes 2 uprights and 1 crossbar)

Description	Part No.
Overhead Infrastructure Platform, 36" D x 96" H	575-73096-36W
Overhead Infrastructure Platform, 36" D x 108" H	575-73108-36W
<b>A</b> Overhead Infrastructure Platform, 36" D x 120" H	575-73120-36W
Overhead Infrastructure Platform, 42" D x 96" H	575-73096-42W
Overhead Infrastructure Platform, 42" D x 108" H	575-73108-42W
Overhead Infrastructure Platform, 42" D x 120" H	575-73120-42W
Overhead Infrastructure Platform, 48" D x 96" H	575-73096-48W
Overhead Infrastructure Platform, 48" D x 108" H	575-73108-48W
Overhead Infrastructure Platform, 48" D x 120" H	575-73120-48W

- Recommended height for platforms is 1' taller than cabinets, at a minimum
- Two steel channels required for assembly (sold separately). Unistrut® recommended
- Maximum mounted equipment should not exceed 400 lbs when platforms are installed 8' apart, bearing upon two 102" H x 42" D frames joined by two sections of 1 5/8" x 1 5/8" steel channel

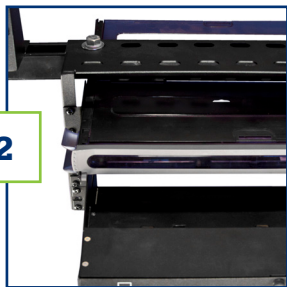
# THE OVERHEAD INFRASTRUCTURE PLATFORM SOLVES **THREE** MAIN ISSUES IN DATA CENTERS (DC):



1

## Time and Labor

Installing overhead-suspended ladder trays on high ceilings is cumbersome and time consuming. When ladder trays and wiring baskets are hung from the ceiling it is necessary to thread the cable and trunks through all of the ceiling supports, adding to the labor at the time of initial installation and whenever moves, adds, or changes (MACs) are made. Using Overhead Infrastructure Platforms can reduce installation time by 40% in a typical installation.



2

## Overhead Space and Access

In many data centers, access to the ceiling may be limited due to blockage by utility ducting and pipes, or because of ceiling height. Also, the roof structure may not allow the added weight from cables and ladder trays. The floor-mounted Overhead Infrastructure Platform can carry the load and avoid obstructions while freeing up rack space by adding patching above cabinets or racks.



3

## Swap-Out and Staging

Many data centers accomplish equipment changes or additions via an entire cabinet swap-out. With the Overhead Infrastructure Platform, racks and cabinets are not attached to the overhead infrastructure, allowing power and cabling to be quickly disconnected from the cabinet without removing hardware. Connections within the cabinet can be easily disconnected, making room for new cabinets to be rolled in and connected.

## Accessories\*

- **Channel Attachment Brackets** — left/right brackets mount to standard steel channel framing to span the pathway support
- **Frame Drill Template** — used to map out your uprights, custom to your support system
- **Sub Floor Mounting Kit** — plate for bottom of a raised floor tile accepts standard threaded rod
- **C-Bracket** — creates a two-tier mounting surface for ladder trays or wire baskets. Available in a variety of sizes: 6/6", 8/8", 12/8", 20/8", 20/18", 24/20", 30/24"
- **Patch Panel Bracket** — mounts on the steel channel above the cabinet and accepts standard 19-in patch panels or other fiber enclosures, providing up to 4U of additional patching capability

\* Steel channel, horizontal pathway and grounding products not included.

Description	Part No.
<b>B</b> Channel Attachment Bracket Kit (2 Included)	575-73000-001
<b>C</b> 36" Frame Drill Template	530-50000-036
42" Frame Drill Template	530-50000-042
48" Frame Drill Template	530-50000-048
<b>D</b> Sub-floor Mounting Kit (2 Included)	530-50000-006
6/6" Frame Extension Mounting C-Bracket	530-60606-001
<b>E</b> 8/8" Frame Extension Mounting C-Bracket	530-60808-001
12/8" Frame Extension Mounting C-Bracket	530-61208-001
20/8" Frame Extension Mounting C-Bracket	530-62008-001
20/18" Frame Extension Mounting C-Bracket	530-62018-001
24/12" Frame Extension Mounting C-Bracket	530-62412-001
24/20" Frame Extension Mounting C-Bracket	530-62420-001
30/24" Frame Extension Mounting C-Bracket	530-63024-001
<b>F</b> Patch Panel Bracket	530-50000-007

# THE SMART CHOICE FOR A BETTER NETWORK

## High-performance connectivity backed by the industry's best service and support

We invent the industry's best technologies. We build them to last. And we stand behind every product and every installation – delivering industry-leading performance and unbeatable service and support – throughout the life of your structured cabling system. Add in the peace of mind that comes from working with a stable, century-old supplier and you get far and away the highest return on investment in the industry.

### Leviton International Offices

#### Asia / Pacific

T +1.631.812.6228  
E infoasean@leviton.com

#### Canada

T +1.514.954.1840  
E pcservice@leviton.com

#### Colombia

T +57.1.743.6045  
E infocolombia@leviton.com

#### India / SAARC

T +91.80.4322.5678  
E infoindia@leviton.com

#### Latin America

T +52.55.5082.1040  
E lsamarketing@leviton.com

#### South Korea

T +82.2.3273.9963  
E infokorea@leviton.com

Leviton Network Solutions Division Headquarters  
[leviton.com/networksolutions](http://leviton.com/networksolutions)  
2222-222nd Street S.E., Bothell, WA 98021 USA

#### Inside Sales

T 800.722.2082  
E insidesales@leviton.com

#### Technical Support

T 800.824.3005 / +1.425.486.2222  
E appeng@leviton.com

#### International Inside Sales

T +1.425.486.2222  
E intl@leviton.com

Leviton Corporate Headquarters  
[leviton.com](http://leviton.com)

201 N. Service Road, Melville, NY 11747 USA

#### Customer Service

T 800.323.8920 / +1.631.812.6000  
E customerservice@leviton.com



### All Other International Inquiries

E international@leviton.com

## YOU MIGHT ALSO BE INTERESTED IN...



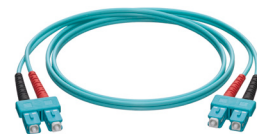
### Fiber Raceway System

This easy to install cable management system provides a dedicated path for critical network cabling. Connection components snap together tool-free, saving time and money.



### e2XHD Patching System

e2XHD fiber and copper cassettes quickly snap in and pull out of high density patch panels, making moves, adds, and changes easier than ever.



### Premium Series Fiber Patch Cords

Premium Series Patch Cords and Pigtails feature advanced polishing and assembly techniques. They are custom configurable and available for next-day shipping for rapid deployment.