



## Northern Fiber Jumper Cable ISO/IEC 11801, ETL Type CMP, C(ETL)CMP

**Part Number: NFJ8803C2RA3M**

Northern Fiber Jumper, LC-LC, OM3 2.0mm, Dup 2F, Riser, Aqua, 3 Meter

See Complete Part Number Legend & Example Below / Connector Color Chart Page 2

### Features:

- ◆ Connector's design complies with TIA-604-3-B (SC), TIA-604-10-B (LC), IEC 61754-4 (SC) and IEC 61754-20 (LC) standards
- ◆ OFNR PVC cable jacket
- ◆ Materials are compliant with RoHS 3 (2015/863), REACH (SVHC list release of January 15, 2019) and UL 94 V-0
- ◆ Qualified to Telcordia GR-326-CORE issue 4 and IEC 61300 standards

### Part # Legend / Example: Northern Fiber Jumper, LC-LC, Straight, OM3, 2.0mm, Dup 2F, OFNR, Aqua, 3 Meter

N	FJ	8	8	0	3	C	2	R	A	3	M
Northern	Fiber Jumper	Connector Legend 1	Connector Legend 2	Boot Legend	Fiber Type	Jacket Thickness	Cable Type	Flame Rating	Jacket Color	Length 3-digit Max	UOM
		0 = PIGTAIL	0 = PIGTAIL	<b>0 = STRAIGHT</b>	0 = OS2	B = 1.6MM	1 = Simp 1F	<b>R = OFNR</b>	1 = WHITE	<b>1-999</b>	F = FEET
		1 = MTRJ	1 = MTRJ		1 - OM1	<b>C = 2MM</b>	<b>2 = 2F zip</b>		P = OFNP		2 = BLACK
		5 = ST	5 = ST		2 = OM2	D = 3MM	3 = 2F Round DUPL	L = LSZH	3 = RED		
		6 = SC	6 = SC		<b>3 = OM3</b>				4 = L GREEN		
		7 = SC/APC	7 = SC/APC		4 = OM4		4 = 2F zip simp		5 = YELLOW		
		<b>8 = LC</b>	<b>8 = LC</b>		5 = OM5		5 = 2F round simp		6 = BLUE		
		9 = LC/APC	9 = LC/APC						7 = BROWN		
									8 = ORANGE		
								9 = GRAY			
								<b>A = AQUA</b>			
								R = ROSE			
								V = VIOLET			

**Note:** When specifying gender changing fiber jumpers, the lower value connector number goes first

### Optical Characteristics:

Item	Parameter		Reference
	Single Mode	Multimode	
Insertion loss	Random mated average ≤ 0.25dB; Random mated for 97% ≤ 0.50dB	Random mated average ≤ 0.25dB; Random mated for 97% ≤ 0.50dB	IEC 61300-3-34
	Against reference ≤ 0.3dB	Against reference ≤ 0.3dB	IEC 61300-3-4
Return loss	≥ 50dB (UPC)	≥ 35dB	IEC 61300-3-6

Note: Specification subject to change without notice

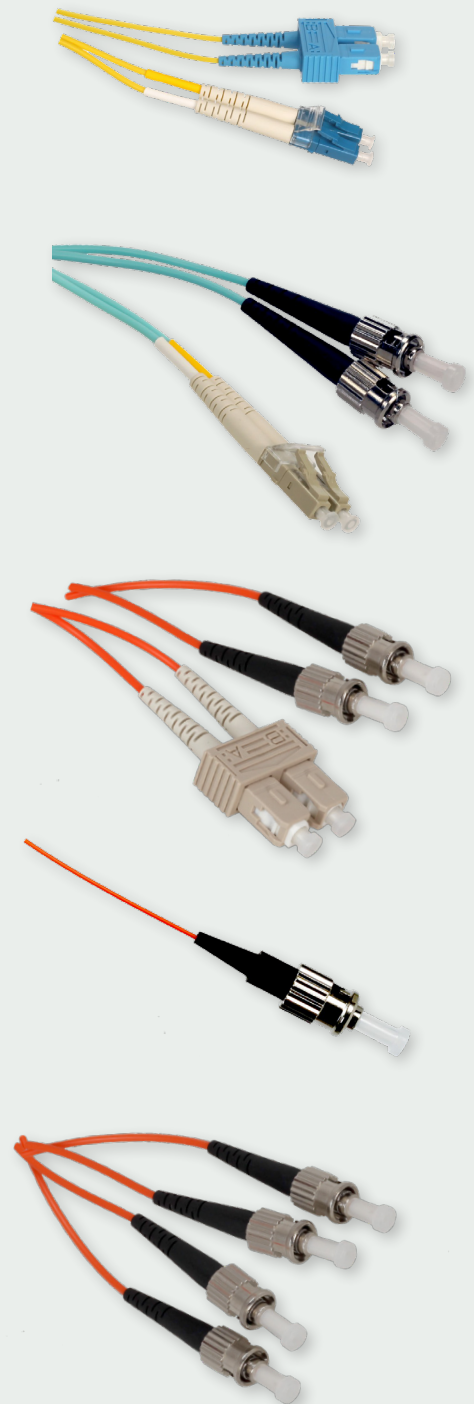
## Northern Fiber Jumper Cable

ISO/IEC 11801

ETL Type CMP, C(ETL)CMP

### Fiber Jumper Connector Colors:

Type	Mode	Connector / Boot Description
SC, LC	Single Mode Simplex	UPC: Blue connector, Blue Boot
	Single Mode Duplex	UPC: Blue connector, Blue and White Boots
	Multi Mode (OM1) Simplex	PC: Beige Connector, Black Boot
	Multi Mode (OM1) Duplex	PC: Beige Connector, Black and White Boots
	Multi Mode (OM3) Simplex	PC: Black Connector, Aqua Boot
	Multi Mode (OM3) Duplex	PC: Black Connector, Aqua and White Boots
Type	Mode	Boot Description
ST	Single Mode Simplex	UPC: Black Boot
	Single Mode Duplex	UPC: Black and White Boots
	Multi Mode (OM1) Simplex	PC: Black Boot
	Multi Mode (OM1) Duplex	PC: Black and White Boots
	Multi Mode (OM3) Simplex	PC: Black Boot
	Multi Mode (OM3) Duplex	PC: Black and White Boots



Note: Specification subject to change without notice