



Secure Infrastructure Solutions For
Wireless Networks



Product Catalog: Fall 2013

oberonwireless.com



ENCLOSURES & MOUNTS

	Suspended Ceiling Enclosures and Mounting Solutions for Wireless Access Points (WAPs) and DAS Remote Units	
3	Model 1052	Suspended Ceiling Enclosure for WAPs with Detachable Antennas
11	Model 1057	Suspended Ceiling Enclosure with ABS Dome
13	Model 1066	Suspended Ceiling Access Point Mount
14	Model 1068	Suspended Ceiling Access Point Mount
	Indoor “Hard-lid” Ceiling and Wall Enclosures and Mounting Solutions for Wireless Access Points and DAS Remote Units	
16	Model 1015	Non-Metallic Surface Mount Lock Box for Wireless APs
18	Model 1029	Right Angle Wall Mount Bracket for Wireless Access Points
19	Model 1030	“Hard-Lid” Ceiling or Wall, Surface Mount Enclosures
	Indoor/Outdoor NEMA Enclosures for Wireless Access Points and DAS Remote Units	
21	Model 1020	Compact Stadium NEMA Enclosure for Wireless Access Points
23	Model 1024	NEMA Enclosure for WAPs – Hinged Cover
	A/V, Multimedia Gateway, Wireless, and Networking Equipment Enclosures	
25	Model 1075-AP135	Suspended Ceiling Tile Insert Enclosure for Aruba Networks WAPs
27	Model 1075-WA	Multimedia Gateway and Wireless Access Point Ceiling Enclosures
29	Model 1076-AP135	Locking Recess Wall/Ceiling Mount for Aruba Networks APs
30	Model 1076-WA	Recess Wall Enclosure for Wireless Access Points
32	Model 1077-WA	Suspended Ceiling Enclosure for Wireless Access Points
34	Model 1078	Retrofit Doors for Model 105(X) Series Enclosures
	RETROFIT DOORS	
37	38-52-(XX) -old	Model 105X Series Enclosure Retrofit Doors
41	Appendix – Warranty	

Welcome to Oberon

Mounting Solutions and Enclosures for Securing Wireless, Networking and A/V equipment

Secure - Aesthetic - Convenient

Oberon’s product line includes locking Wi-Fi access point, DAS Remote, networking and A/V equipment enclosures for virtually every workspace. No other manufacturer provides such a complete line of products to secure your in-building wireless and networking equipment. Oberon has a solution for suspended ceiling, hard-lid ceiling, and wall-mounted equipment, indoors and outdoors, for classrooms, public spaces, hospitals, commercial offices, warehouses, and just about any other environment. Oberon’s products are designed to protect most manufacturers’ datacom/telecom equipment.

Enclosures are UL Listed and designed to satisfy national electric code for installation in the above-ceiling space. This includes wall-mounted locking enclosures, cut-away ceiling enclosures for hard-lid areas, and NEMA 4 enclosures for outdoor environments. The products are constructed of steel and aluminum and are electro-statically powder-coated for an attractive, extremely durable finish.

Oberon’s products improve wireless infrastructure physical security by allowing the wireless equipment to be “locked down” in otherwise open office spaces. Wireless coverage is improved using the ceiling-mounted enclosures as the enclosure door provides an effective back-plane for the antenna, thereby optimizing the antenna pattern for in-room coverage. Moves, adds, and changes are facilitated by permitting easy access by authorized personnel. In healthcare environments, equipment is serviced with the turn of a key, rather than lifting ceiling tiles. Oberon’s ceiling enclosures and antenna products are UL listed and preserve the integrity and safety of the ceiling system and air-handling space.

Model 1052-00

Suspended Ceiling Enclosure for WAPs with Detachable Antennas

The Model 1052-00 wireless LAN access point enclosure is a locking 2' x 2' suspended ceiling tile enclosure for wireless access points and DAS remote units with detachable antennas. This aesthetic, white powder-coated steel enclosure conveniently replaces a standard ceiling tile, and simplifies access point moves, adds, changes and maintenance. This model has openings in the door to mount up to seven external antennas. The 1052 series has interchangeable retrofit doors, allowing current owners to install new AP or antenna solutions from different vendors, simply by swapping doors.



Model 1052-00 shown with (4) optional Oberon 34-ZDUAL Antennas

Features

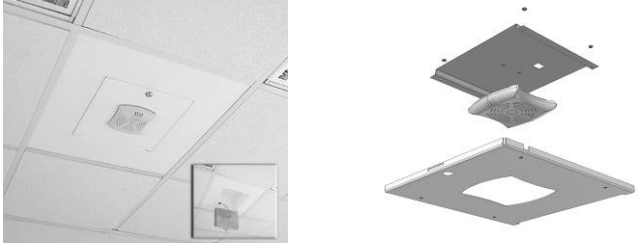
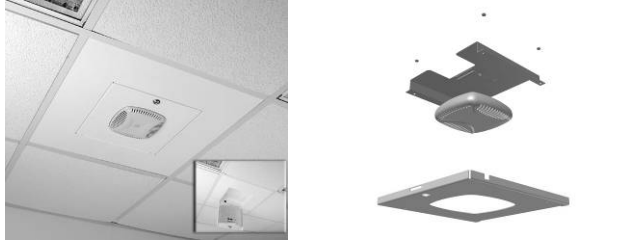




- 2' x 2' suspended ceiling tile-like enclosure designed to secure and protect most vendor's wireless access points, DAS remote units, and other networking gear 000
- Universal T-bar mounting bracket allows easy installation of most vendors' access points
- UL listed and designed to meet National Electric Code Paragraphs 300-22 and 300-23 for installation in the above ceiling space; OSHPD approved (OPA File No. 1638-10)
- Durable, attractive, textured powder coat finish matches many ceiling tiles
- Fully-hinged locking door, keyed alike
- Interchangeable doors permit simple migration to new access points and antennas
- Enclosure back-box is effective dust barrier to simplify ICRA procedure compliance



Specifications

- This is an all steel enclosure, so antennas must be mounted externally using optional bulkhead connectors (Oberon P/N 35-BULKHD-KIT), Oberon 34-ZDUAL antennas, or other thru-hole ceiling mounted antennas with <1" diameter stud
- Back-box is 16 ga. galvanized steel; door and flange are textured, white powder-coated steel. RoHS compliant
- Size: Flange is 23 ¾" x 23 ¾", back-box is 12 ½" x 12 ½" x 4 ½" deep
- Maximum weight to be installed inside the unit is 25 lbs.
- Enclosure must be supported by the building structure, independent of the suspended ceiling

Model 1052/1052 Configurations for Aruba Networks APs

<p>Model 1052-AP105</p>  <p>For Aruba Networks AP-135 access points</p>	<p>Model 1052-AP135</p>  <p>For Aruba Networks AP-135 access points</p>
<p>Model 1052-AN-ANT16</p>  <p>For Aruba Networks access points w/ detachable antennas (AP-60, AP-70, AP-120, AP-124)</p>	<p>Model 1052-DOME</p>  <p>For Aruba Networks' and other vendors' access points with <i>non-detachable</i> antennas (AP-100, AP-120, AP-130 series)</p>
<p>Model 1052-WAXL</p>  <p>For most vendor's wireless access points, DAS remote units, and other networking gear with dipole or body integrated antennas</p>	

Wireless APs not included. Other door styles are available. Please visit the Oberon website or contact your Oberon representative.

Includes

- (1) unit per carton
- (1) Internal universal access point mounting T-bar bracket
- (4) Hanger wires
- (1) cable egress fire stop kit ($\frac{3}{4}$ " trade size conduit connector, and fire block stop insert)
- (2) keys for lock
- (4) White cosmetic screw caps, and (4) #10 ceiling/wall attachment screws
- Installation Instructions
- Shipping Weight: 22 lbs.

Accessories

- P/N 34-ZDUAL-RPSMA- color matched dual band omni antenna with 18" pigtail and RPSMA connector
- P/N 34-ZDUAL-RPTNC - color matched dual band omni antenna with 18" pigtail and RPTNC connector
- P/N 34-BMANT24- 2.4 GHz color matched omni antenna with 12" pigtail and RPTNC connector
- P/N 34-BMANT5- 5 GHz band color matched omni antenna with 12" pigtail and RPTNC connector
- P/N 34-PATCH-RPTNCM- 2.4 GHz, 8 dB gain, directional antenna with 8" pigtail and RPTNC connector
- P/N 34-MULTI-CARRIER – multi-band, multi carrier 700 MHz/Cellular/PCS/Wi-Fi ceiling mounted antenna
- P/N 35-BLKHD-KIT-RPTNC – 18" jumper cable with RPTNC connectors on both ends, bulkhead connector and plastic ring designed to fit into $\frac{3}{4}$ " trade knockout. For mounting external antennas
- P/N 35-BLKHD-KIT-RPSMA – 18" jumper cable with RPSMA connectors on both ends, bulkhead connector and plastic ring designed to fit into $\frac{3}{4}$ " trade knockout. For mounting external antennas
- P/N 35-CBXJ2WH-A surface mount modular receptacle to terminate horizontal cable in the enclosure
- P/N 1790 – PoE interlock- disconnects power and notifies when enclosure door has been opened

Customer Print and Installation Instructions

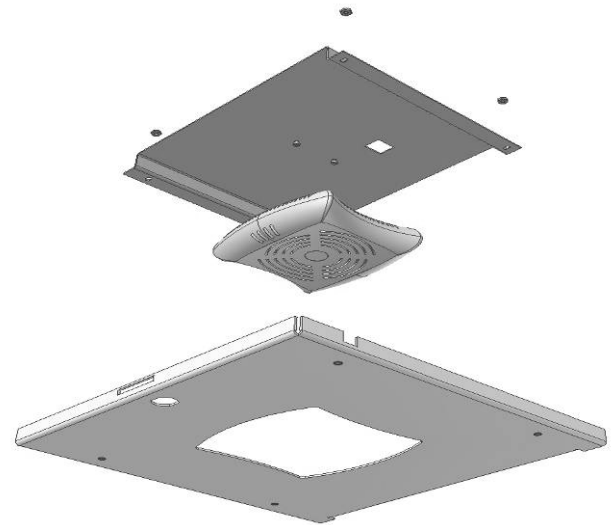
Visit www.oberonwireless.com

Rev. 8/2/2013

Model 1052-AP105

Suspended Ceiling enclosure for Aruba Networks AP105 WAP

Oberon's Model 1052-AP105 wireless LAN access point enclosure is a locking, 2' x 2' ceiling tile enclosure designed specifically to conveniently mount and secure the Aruba Networks AP-105 wireless access points. The enclosure is based on Oberon's popular 1052-AP105 universal wireless access point enclosure, with a door designed specifically for Aruba Networks AP105 wireless access point. No ceiling tile cuts are required for installation. Just mount the access point into the door, place the ceiling tile enclosure in the ceiling, secure the enclosure to the ceiling support structure, and the access point is conveniently and aesthetically secured in the ceiling. Upgrades to different styles of access points are achieved by simply unlocking and replacing the door.



1) Model 1052-AP105 shown with Aruba Networks AP105 access point (not included) 2) Exploded view of the door, access point, and bracket

Features

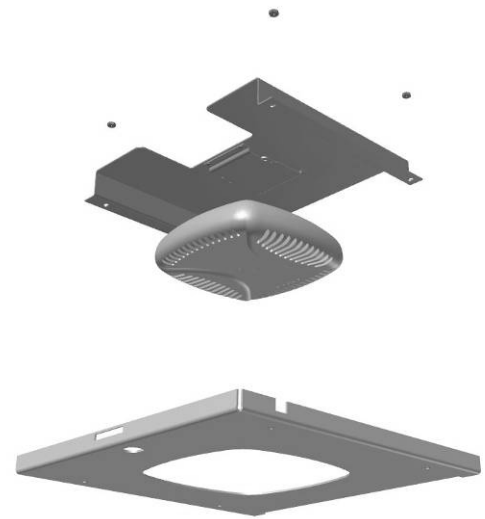
- Ceiling tile enclosure specifically designed for Aruba Networks AP-105 access points
- UL listed and designed to meet National Electric Code Paragraphs 300-22 and 300-23 for installation in the above ceiling space; OSHPD approved (OPA File No. 1638-10)
- Durable, attractive, textured powder coat finish matches many ceiling tiles
- Fully-hinged locking door, keyed alike
- Interchangeable doors permit simple migration to new access points and antennas
- Enclosure back-box is effective dust barrier to simplify ICRA procedure compliance



Model 1052-AP135

Suspended Ceiling enclosure for Aruba Networks AP135 WAP

Oberon's Model 1052-AP135 wireless LAN access point enclosure is a locking, 2' x 2' ceiling tile enclosure designed specifically to conveniently mount and secure the Aruba Networks AP-135 wireless access points. The enclosure is based on Oberon's popular 1052-00 universal wireless access point enclosure, with a door designed specifically for Aruba Networks AP135 wireless access point. No ceiling tile cuts are required for installation. Just mount the access point into the door, place the ceiling tile enclosure in the ceiling, secure the enclosure to the ceiling support structure, and the access point is conveniently and aesthetically secured in the ceiling. Upgrades to different styles of access points are achieved by simply unlocking and replacing the door.



1) Model 1052-AP135 shown with Aruba Networks AP135 access point (not included) 2) Exploded view of the door, access point, and bracket

Features

- Ceiling tile enclosure specifically designed for Aruba Networks AP-125 access points
- UL listed and designed to meet National Electric Code Paragraphs 300-22 and 300-23 for installation in the above ceiling space; OSHPD approved (OPA File No. 1638-10)
- Durable, attractive, textured powder coat finish matches many ceiling tiles
- Fully-hinged locking door, keyed alike
- Interchangeable doors permit simple migration to new access points and antennas
- Enclosure back-box is effective dust barrier to simplify ICRA procedure compliance



Model 1052-AN-ANT16

Suspended Ceiling Enclosures for WAPs with Detachable Antennas

The Model 1052-AN-ANT16 wireless LAN access point enclosure is a locking, 2' x 2' ceiling tile enclosure designed specifically for the Aruba Networks access points with *detachable* antennas). This aesthetic, white powder-coated steel enclosure has mounting features in the door for installation of the Aruba Networks AP-ANT-16 antenna, simplifying installation & optimizing wireless coverage. No ceiling tile cuts are required for installation. The 1052 series has interchangeable retrofit doors, allowing current owners to install new AP or antenna solutions from different vendors, simply by swapping doors



1052-AN-ANT16 shown with Aruba Networks AP120 and AP-ANT-16 802.11n, 3 element, dual band antenna (not included)

Features

- Ceiling tile enclosure specifically designed for Aruba Networks access points with connectors and detachable antennas (AP-60, AP-70, AP-120, AP-124, AP-114, AP-224)
- Mounting features on the door for the Aruba Networks AP-ANT-16 802.11n, 3 element, dual band antenna
- UL listed and designed to meet National Electric Code paragraphs 300-22 and 300-23 for use in the above-ceiling space; OSHPD approved
- Universal T-bar mounting bracket allows easy installation of most vendors' access points
- Durable, attractive, textured powder coat finish matches many ceiling tiles
- Fully-hinged locking door, keyed alike
- Interchangeable doors permit simple migration to new access points and antennas
- Enclosure back-box is effective dust barrier to simplify ICRA procedure compliance



Model 1052-DOME

Suspended Ceiling Enclosure for WAPs with Non-Detachable Antennas

The Model 1052-DOME wireless LAN access point enclosure is a locking, 2' x 2' suspended ceiling, plenum rated, enclosure designed for Aruba Network's, and other vendor's, access points with *non-detachable* antennas (AP-100, AP-110 AP-120, AP-130, AP-220 series). This aesthetic, white powder-coated steel enclosure has an impact resistant, RF transparent dome that extends only 4.5" below the ceiling plane. Access points attach to interior T-bar bracket. The 1052 series has interchangeable retrofit doors, allowing current owners to install new AP or antenna solutions from different vendors, simply by swapping doors



Model 1052-DOME shown with Aruba Networks AP-125 (not included)

Features

- Ceiling tile enclosure designed for Aruba Network's, and other vendor's, access points with integrated, or non-detachable antennas (such as AP-104/105, AP-114/115, AP-134/135, AP-225)
- UL listed and designed to meet National Electric Code Paragraphs 300-22 and 300-23 for installation in the above ceiling space; OSHPD approved (OPA File No. 1638-10)
- Universal T-bar mounting bracket allows easy installation of most vendors' access points
- Durable, attractive, textured powder coat finish matches many ceiling tiles
- Attractive, durable plastic dome is virtually transparent to wireless signals
- Fully-hinged locking door, keyed alike
- Interchangeable doors permit simple migration to new access points and antennas
- Enclosure back-box is effective dust barrier to simplify ICRA procedure compliance



Model 1052-WAXL

Suspended Ceiling Enclosure for WAPs with Dipole Antennas

The Model 1052-WAXL wireless LAN access point enclosure is a locking 2' x 2' suspended ceiling tile enclosure for wireless access points and DAS remote units with attached dipole, or body integrated, antennas. This aesthetic, white powder-coated steel enclosure conveniently replaces a standard ceiling tile, and simplifies access point moves, adds, changes and maintenance. This model has an impact resistant, RF transparent dome, which protrudes only 4" below the ceiling plane. The 1052 series has interchangeable retrofit doors, allowing current owners to install new WAP or antenna solutions, simply by swapping doors.



Features

- 2' x 2' suspended ceiling tile-like enclosure designed to secure and protect most vendor's wireless access points, DAS remote units, and other networking gear with dipole or body integrated antennas
- UL listed and designed to meet National Electric Code Paragraphs 300-22 and 300-23 for installation in the above ceiling space; OSHPD approved (OPA File No. 1638-10)
- Universal T-bar mounting bracket allows easy installation of most vendors' access points
- Durable, attractive, textured powder coat finish matches many ceiling tiles
- Durable plastic dome is virtually transparent to wireless signals
- Fully-hinged locking door, keyed alike
- Interchangeable doors permit simple migration to new access points and antennas
- Enclosure back-box is effective dust barrier to simplify ICRA procedure compliance



Model 1057-00

Suspended Ceiling Enclosure with ABS Dome

Oberon's Model 1057-00 suspended ceiling enclosure provides a secure, aesthetic, convenient mounting solution for wireless access points and DAS remote units from most vendors. The enclosure has a low profile, impact resistant ABS dome so that wireless access points with integrated or non-detachable antennas can be secured in otherwise unsecured spaces. The product is UL Listed and designed to satisfy National Electric Code (NEC) paragraphs 300-22 and 300-23 for installation in the air handling space. Locks are "keyed-alike" to simplify moves, adds, and changes.



Oberon Model 1057-00

Features

- 2' x 2' suspended ceiling tile wireless access point or DAS remote unit enclosure designed to accommodate wireless access points and DAS remote units from most vendors with integrated or non-detachable antennas
- UL listed and designed to meet National Electric Code Paragraphs 300-22 and 300-23 for installation in the above ceiling space; OSHPD approved (OPA File No. 1638-10)
- Universal T-bar mounting bracket allows easy installation of most vendors' access points
- Shallow back-box (2.7") simplifies installation in ceilings with little space above ceiling tiles
- Durable, attractive, textured powder coat finish matches many ceiling tiles
- Durable, attractive ABS plastic dome is virtually transparent to wireless signals
- Fully-hinged locking door, keyed alike
- Enclosure back-box is effective dust barrier to simplify ICRA procedure compliance



Specifications

- The enclosure back-box, door frame, and flange are steel, so WAP must be installed such that antennas, (or face of WAP if antennas are integrated) are largely within the ABS plastic dome. There is little impact on WAP coverage with antennas largely inside dome.
- Back-box is 16 ga. galvanized steel; door and flange are textured, white powder-coated steel. RoHS compliant
- Dome is 12" x 12" x 2", UL 94-5VA, impact resistant, RF transparent, textured white ABS plastic
- Size: Flange is 23 ¾" x 23 ¾", back-box is 18.6" x 18.6" x 2.7" deep. Total depth is 4.7"
- Maximum weight to be installed inside the unit is 25 lbs.
- De-rate AP upper operating temperature limit by 10°C when AP in the enclosure
- Enclosure must be supported by the building structure, independent of the suspended ceiling

Includes

- (1) unit per carton
- (1) Internal universal access point mounting T-bar bracket
- (4) Hanger wires
- (1) cable egress fire stop kit (¾" trade size conduit connector, and fire block stop insert)
- (2) keys for lock
- Installation Instructions
- Shipping Weight: Approximately 19 lbs.

Accessories

- P/N 35-CBXJ2WH-A surface mount modular receptacle to terminate horizontal cable in the enclosure
- P/N 1790 – PoE interlock- disconnects power and notifies when enclosure door has been opened

Customer Print and Installation Instructions

Visit www.oberonwireless.com

Rev. 10/01/2013

Model 1066-00

Suspended Ceiling Access Point Mount

The Model 1066-00 wireless access point ceiling mount is designed to provide a secure, convenient, and aesthetic mounting solution for the Aruba Networks AP-135 series 802.11n access points. This durable, white powder-coated steel 2' x 2' ceiling tile-like mount locks the access point in place with a patent pending locking mechanism. Access point moves, adds, and changes can be performed without removing the mount from the ceiling or lifting ceiling tiles. No ceiling tile cuts are required for installation.



Model 1066-00 shown with Aruba Networks AP-135 series Wireless Access Point (not included)

Features & Specifications:

- Locking ceiling mount designed specifically for aesthetic, secure mounting of the Aruba Networks AP-135 series 802.11n wireless access points
- UL listed and designed to meet NEC300-22 and 300-23 for plenum installations. OSHPD approved
- Attractive powder coat finish matches most ceiling tiles
- Patent pending locking mechanism, keyed alike, secures access point into the ceiling mount
- Steel flange and aluminum back-box create an effective dust barrier to simplify ICRA compliance
- Flange is 18 ga powder-coated steel, back-box is aluminum
- Size: 23 3/4" x 23 3/4" x 2" deep. Fits into standard (U.S.) 2' x 2' suspended ceiling systems
- Shipping Weight: approximately 10.5 lbs
- Mount must be supported by the building structure independent of the suspended ceiling

Model 1066-00 Includes:

- (1) cable egress fire stop kit (3/4" trade conduit connector and fire stop foam insert)
- (4) Hanger wires
- Mounting Instructions



Model 1068-00

Suspended Ceiling Access Point Mount

Oberon's Model 1068-00 universal wireless access point ceiling mount is designed to provide a secure, convenient, and aesthetic mounting solution for most vendors wireless access points. This aesthetic, white powder-coated steel 2' x 2' ceiling tile-like mount locks the access point in place with a patent pending locking mechanism. The access point is attached to a vendor model specific mounting plate, and the mounting plate is locked in place into the ceiling tile. Access point moves, adds, and changes can be performed without removing the mount from the ceiling. No ceiling tile cuts are required for installation. Vendor specific mounting plate sold separately.



Model 1068-00 shown without wireless Access Point and with Aruba Network's AP135

Features:

- Locking ceiling mount designed for secure, aesthetic, mounting of most vendor's wireless access points
- UL Listed and designed to meet NEC paragraphs 300-22 and 300-23 for plenum installations, OSHPD approved (OPA file # 1638)
- Attractive, durable powder-coated finish matches most ceiling tiles
- Patent pending locking mechanism, keyed alike, secures access point into the ceiling mount
- Interchangeable vendor specific mounting plates permit simple migration to new access points without lifting ceiling tiles
- Steel flange and aluminum back-box create an effective dust barrier to simplify ICRA compliance
- Safety tether keeps access point from falling out of mount when unlocked



Specifications:

- Flange is 18 ga powder-coated steel, back-box is aluminum
- Size: 23 ¾" x 23 ¾" x 2" deep. Fits into standard (U.S.) 2' x 2' suspended ceiling systems
- Mount must be supported by the building structure, independent of the suspended ceiling

Configurations

Contact your Oberon representative for the vendor specific mounting plates required. Plates are available for leading wireless access points. Plates sold separately.

The 68-XXXX is the Vendor Specific Mounting Plate number. These are attached to the access point/ DAS remote unit, which can then be locked into the 1068-00 ceiling mount. Select the appropriate mounting plate and order with the 1068-00.

ACCESS POINT/DAS REMOTE MANUFACTURER	ACCESS POINT / DAS REMOTE P/N	OBERON MOUNTING PLATE P/N	NOTES
Cisco	1140, 1260, 2600, 3500, 3600, 3700 series	68-CCOAP	Does not require Cisco mounting bracket
Aruba Networks	AP135	68-AP135	
Ruckus	AP7300	68-AP7300	
Corning MobileAccess VE	MobileAccess VE pod	68-COR-VE	

Includes

- (1) cable egress fire block kit (¾" Trade size conduit connector and fire block foam insert)
- (4) Hanger wires
- Mounting Instructions
- Shipping weight: approximately 10.5 lbs

Accessories

- P/N 35-CBXJ2WH-A surface mount modular receptacle to terminate horizontal cable in the enclosure

Customer Print and Installation Instructions

Visit www.oberonwireless.com

Rev. 10/01/2013

Model 1015

Non-Metallic Surface Mount Lock Box for Wireless APs

The Model 1015 is a compact non-metallic enclosure designed to secure and protect Wi-Fi access points in residence halls, hotels, retail locations and other open indoor venues. This rugged ABS enclosure is virtually transparent to wireless signals so access points with body integrated antennas or small detachable antennas may be protected. This enclosure's curved cover is aesthetically pleasing and is available in white (1015-00) or frosted, translucent (1015-C). Telecommunications outlet can be placed inside, and cable raceway or conduit can be conveniently terminated.



Model 1015-00 shown with wireless access point (not included)

Features and Specifications

- 11" x 11" x 4" wall, or hard lid ceiling, surface mount locking non-metallic enclosure
- Durable injection molded UL94-HB ABS material construction, RoHS compliant
- Universal T-bar mounting bracket allows easy installation of most vendors' access points
- Opening in back allows placement directly over telecommunications outlet
- Knockouts in sidewalls for conduit or cable raceway
- Fully-hinged locking cover, keyed alike. Stainless steel hinge
- ABS material is virtually transparent to wireless signals, and is paintable
- De-rate AP upper operating temperature limit by 10°C when AP in the enclosure



Configurations

MODEL 1015-00: White, textured ABS cover

MODEL 1015-C: frosted, translucent ABS cover. LEDs are visible through this cover

Includes

- (1) unit per carton
- (1) Internal universal access point mounting T-bar bracket
- (2) keys for lock
- Installation instructions
- Approximate shipping weight: 4 lbs.

Accessories

- P/N 35-CBXJ2WH-A surface mount modular receptacle to terminate horizontal cable in the enclosure

Customer Print and Installation Instructions

(see www.oberonwireless.com for most current documentation)

Rev. 10/01/2013

Model 1029-00

Right Angle Wall Mount Bracket for Wireless Access Points

Many wireless access point manufacturers recommend that the access point be mounted in a horizontal orientation to achieve best wireless coverage. Horizontal mounting may be difficult in hard lid and other environments where the access point is mounted on the wall. Oberon's Model 1029-00 wireless LAN access point wall mount bracket is designed to mount and secure access points from most manufacturers in areas where wall mounting may be required. This aesthetic, white powder coated steel mounting bracket is ideal for mounting the access point in the preferred horizontal orientation in residence halls, hotels, and other hard lid venues. Conduit, raceways, and cable can be securely terminated inside the enclosure to provide for a clean appearance. The access point can be locked in place using the manufacturer's locking features.



Features and Specifications:

- Designed to enable wireless access points to be mounted in preferred horizontal orientation
- Integrated T-bar segment accommodates access points from most vendors
- Knockouts on two sides and top for cable ingress
- Can be mounted directly over telecommunications outlet
- 2 part construction, textured white powder coated steel right angle bracket and cover
- Size: 9" x 6" wide x 5" tall
- Shipping weight: approximately 4lbs

rev 10/03/2013



Model 1030-00

“Hard-Lid” Ceiling or Wall, Surface Mount Enclosures

Oberon’s Model 1030-00 “hard lid” or wall mount enclosure provides a secure, aesthetic, convenient mounting solution for wireless access points from most vendors. The enclosure has a low profile impact resistant ABS dome so that wireless access points with integrated or non-detachable antennas can be secured in otherwise unsecured spaces. The product is UL listed and designed to satisfy National Electric Code (NEC) paragraphs 300-22 and 300-23 for installation in the air handling space. Locks are “keyed-alike” to simplify moves, adds, and changes.



Features

- 17” x 17” low profile steel and plastic surface mount enclosure designed to secure and protect most vendor’s wireless access points, DAS remote units, and other networking gear
- UL listed and designed to meet National Electric Code Paragraphs 300-22 and 300-23 for installation in the above ceiling space; OSHPD approved (OPA File No. 1638-10)
- Universal T-bar mounting bracket allows easy installation of most vendors’ wireless access points
- Durable, attractive, textured powder coat finish
- Durable, attractive ABS plastic is virtually transparent to wireless signals
- Fully-hinged locking door, keyed alike



Specifications

- Wireless access point enclosure designed to be surface mounted on “hard-lid” ceilings or walls.
- 17" x 17" x 1.7" back-box. Total depth of enclosure with dome is 3.7". Back box, door, and flange are textured, white powder-coated steel. RoHS compliant
- Dome is 12" x 12" x 2", UL 94-5VA, impact resistant, RF transparent, textured white ABS plastic
- Knockouts for ¾" trade conduit connectors and snap-in keystone jacks and connectors
- Knockouts in back-box for telecommunications outlets
- Maximum weight to be installed inside the unit is 25 lbs.
- De-rate upper operating temperature limit from +50°C to +40°C when AP in the enclosure
- If enclosure is in ceiling, it must be supported by the building ceiling structural system, not tile gridwork

Includes

- (1) unit per carton
- (1) Internal universal access point mounting T-bar bracket
- (2) keys for lock
- (1) ¾" trade conduit connector
- Installation Instructions
- Shipping Weight: Approximately 13 lbs.

Accessories

- P/N 35-CBXJ2WH-A surface mount modular receptacle to terminate horizontal cable in the enclosure

Customer Print and Installation Instructions

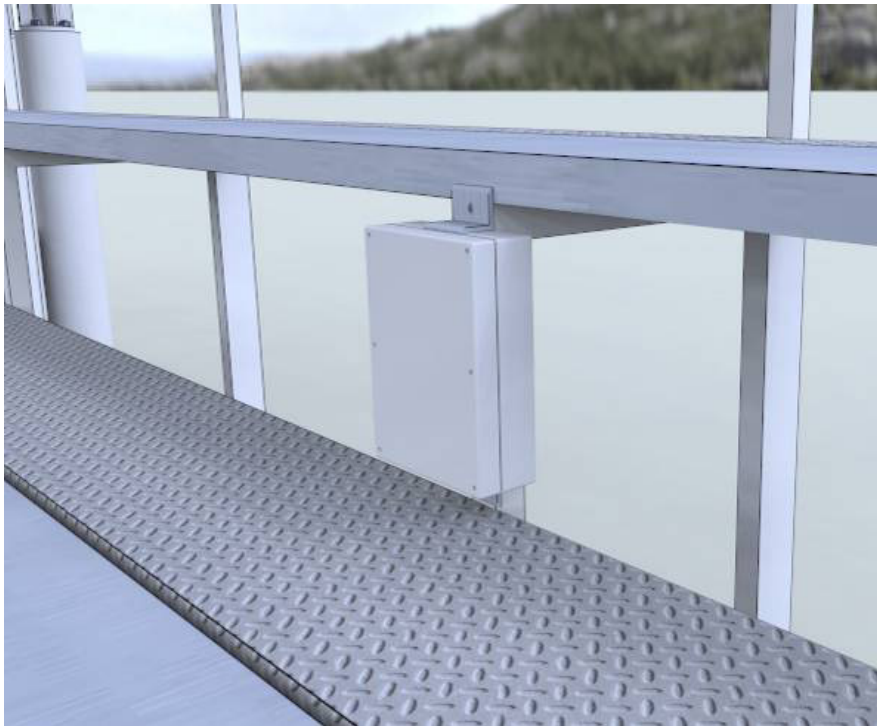
Visit www.oberonwireless.com

Rev. 10/01/2013

Model 1020-00

Compact Stadium NEMA Enclosure for Wireless Access Points

The Model 1020-00 is a compact NEMA 4 enclosure designed specifically to protect wireless access points in challenging environments such as stadiums and auditoriums. This rugged polycarbonate enclosure protects the access point from weather, pressure spray, spilling liquids, dust, and impacts, and is transparent to wireless signals, so access points with body integrated antennas or small detachable antennas may be protected. This plastic is paintable so it can be more effectively concealed where appearance is important. This is the smallest NEMA 4 enclosure for most access points and is ideal for under seating installation.



Features:

- Compact, rugged enclosure for installing access points in physically challenging environments. Ideal for under seating and riser installation
- Designed to NEMA 1, 2, 4, 4X, 12, and 13, and IEC529-IP66 specifications for use in indoor/outdoor wet, dirty, or corrosive environments. UV stabilized for exposure to direct sunlight.
- Virtually transparent to wireless signals
- Plastic is easily drilled and machined for custom cable ingress and installation. Enclosure is paintable.
- Cover attaches with six stainless steel screws, silicon sponge gasket material provides seal
- Sturdy right angle aluminum mounting brackets, interior WAP mounting plate



Specifications:

- UL listed to UL508. Light gray back-box and cover are UL94-HB rated PBT/PC blended plastic
- Cover screws must be torqued to 8 in-lbs. Cover screws are recessed into cover
- De-rate AP upper operating temperature limit by 11°C when AP in the enclosure
- Interior size: 11.5" x 8.8" x 3.1" deep. Other sizes are available, please contact your Oberon representative

Configurations

MODEL 1020-00: Includes internal universal access point mounting T-bar bracket

MODEL 1020-PS: Includes Cisco WAP mounting plate

Includes

- (1) unit per carton
- (1) Internal mounting plate or T-bar bracket
- Installation instructions
- Approximate shipping weight: 4 lbs.

Accessories

- P/N 35-CBXJ2WH-A surface mount modular receptacle to terminate horizontal cable in the enclosure
- P/N 35-CORD-KIT – Cord Grip Connector
- P/N 35-RJ45-KIT – Water tight RJ-45 Bulkhead connector

Customer Print and Installation Instructions

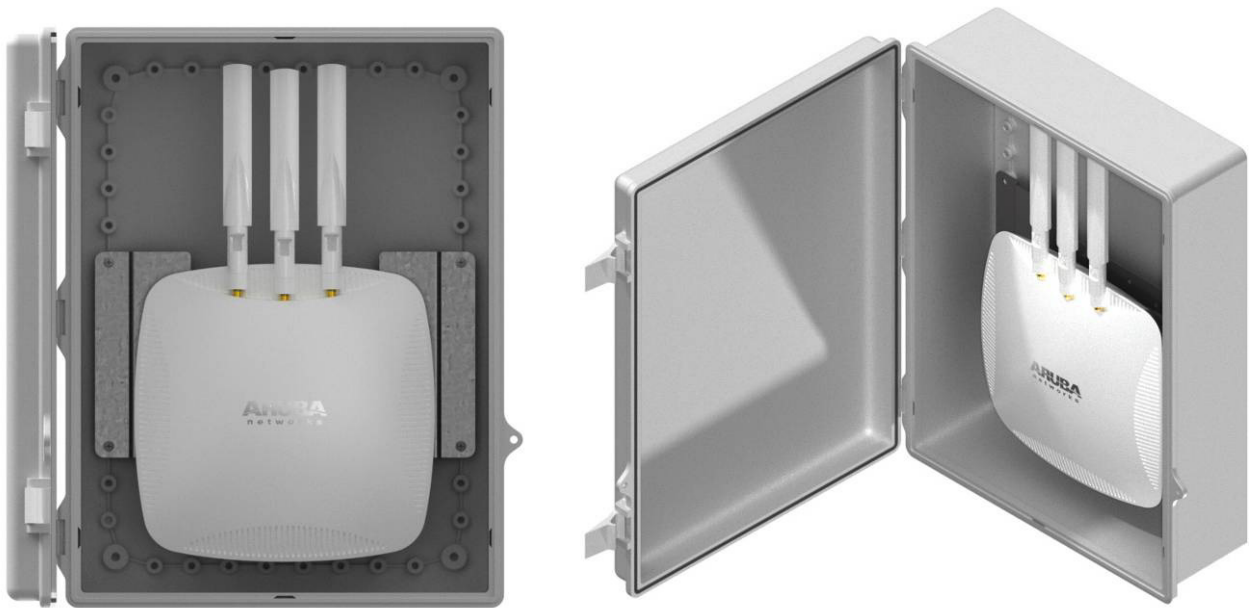
(see www.oberonwireless.com for most current documentation)

Rev. 10/01/2013

Model 1024-00

NEMA Enclosure for WAPs – Hinged Cover

The Model 1024-00 is a compact NEMA 4X enclosure designed to protect wireless LAN access points and other wireless equipment in challenging indoor/outdoor environments. This rugged polycarbonate enclosure protects the access point from weather, dust, and impacts, and is transparent to wireless signals, so access points with body integrated antennas or small detachable antennas may be protected. The enclosure has a hinged cover, molded-in padlock hasps for locking, and interior panel for attaching access points. Enclosure is paintable. Includes wall mounting hardware. Enclosures with clear covers are available. Please contact your Oberon representative.



Features

- Compact, low profile wireless access point enclosure for indoor and outdoor applications such as stadiums and public hotspots
- Designed to NEMA 3R, 4, 4X, 12, and 13, and IEC529-IP65 specifications for indoor/ outdoor wet, dirty, or corrosive environments. UV stabilized for exposure to direct sunlight
- Virtually transparent to wireless signals
- Universal T-bar mounting bracket allows easy installation of most vendors' access points
- Cover is hinged. Cover can be latched and locked with padlock (not included)
- Clear polycarbonate cover is available upon request. Please specify as “-C” in model number



Specifications:

- UL508 listed. Back box and cover are light gray UL94-5VA Polycarbonate/PBT blend. Clear cover is UL94V-0 Polycarbonate.
- Interior Dimensions: 14.8" x 10.8" x 5.25" deep. Exterior dimensions: 15.5" x 12" x 6"
- Wireless access point max. operating temperature should be de-rated by 9 °C in the 1024

Includes

- (4) stainless steel wall mounting brackets
- Interior universal T-bar mounting bracket for most vendors access points
- Installation Instructions
- Shipping Weight: Approximately 7 lbs

Accessories

- P/N 35-POLE-MOUNT-BRACKET- external mounting bracket to mount enclosure on pole
- P/N 35-BLKHD-KIT-RPTNC – 18" jumper cable with RPTNC connectors on both ends, bulkhead connector and plastic ring designed to fit into ¾" trade knockout. For mounting external antennas
- P/N 35-BLKHD-KIT-RPSMA – 18" jumper cable with RPSMA connectors on both ends, bulkhead connector and plastic ring designed to fit into ¾" trade knockout. For mounting external antennas
- P/N 35-NFBLKH- Type N female bulkhead connector
- P/N 35-CORD- Cord Grip Connector
- P/N 35-RJ45- RJ45 bulkhead connector

Customer Print and Installation Instructions

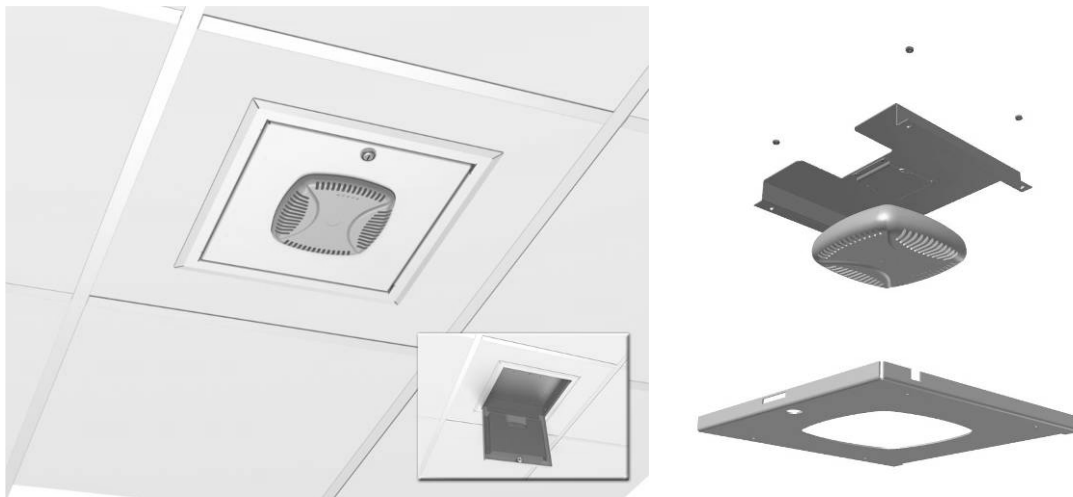
Visit www.oberonwireless.com

rev 10/02/2013

Model 1075-AP135

Suspended Ceiling Locking Mount for Aruba Networks WAPs

The Model 1075-AP135 wireless LAN access point mounting solution is a locking ceiling tile insert designed specifically to secure the Aruba Networks AP134/135. This aesthetic, white powder-coated enclosure has a bracket in the door to which the access point attaches. When the door is closed, the access point is locked in place. Installation requires a square opening to be cut into the ceiling tile or hard ceiling. The enclosure is supported by two backside tile bridges, and hanger wires attached to the building ceiling structural support. The door is interchangeable for new doors specific to different manufacturer's access points and antennas. This enclosure fits into a cutout in the ceiling tile, and is only 3" deep so it works where there is little overhead space above the suspended ceiling.



1) Model 1075-AP135 shown with Aruba Networks AP135 access point (not included)
2) Exploded view of the door, access point, and bracket

Features

- 15" x 15" ceiling enclosure designed for Aruba Networks AP135 wireless access point
- UL listed and designed to meet National Electric Code Paragraphs 300-22 and 300-23 for installation in the above ceiling space; OSHPD approved (OPA File No. 1638-10)
- Universal T-bar mounting bracket allows easy installation of most vendors' access points
- Durable, attractive, textured powder coat finish matches most ceiling tiles
- Durable, attractive, plastic dome is virtually transparent to wireless signals
- Fully-hinged locking door, keyed alike
- Shallow back box (3") simplifies installation in ceilings with little space above ceiling tiles
- Interchangeable doors permit simple migration to new access points and antennas
- Enclosure back box is effective dust barrier to simplify ICRA procedure compliance



Specifications

- Back-box is 16 ga. aluminum; door and flange are textured, white powder-coated steel. RoHS compliant
- Size: Flange is 15" x 15", back-box is 12 3/4" x 12 3/4" x 3" deep
- Knockouts for AC receptacle, (2) keystone jacks, (2) 3/4" trade conduit connector
- Maximum weight to be installed inside the unit is 25 lbs.
- Enclosure must be supported by the building structure, independent of the suspended ceiling

Model 1075 Configurations

Interchangeable doors allow the 107X Series ceiling enclosure to be customized to different vendor's product.

MODEL NUMBER	DESIGNED FOR	DESCRIPTION
107X-CP	Apple TV, other digital gateways, or wireless APs	Clear polycarbonate dome in the door passes wireless and IR signal, digital gateway inside
107X-WA	Wireless APs	Opaque white ABS dome in the door passes wireless signal, AP inside
107X-CCOAP	Cisco Access Points	Cisco AP is locked into door, fully exposing front of AP
107X-AN-AP135	Aruba Networks AP	Aruba Networks AP-135 is locked into door, exposing front of AP
107X-00	External antennas	External antennas mount on door, AP inside. MUST use Oberon 35-BLKHD-KIT, 34-ZDUAL antennas, or ceiling mount antennas

Includes

- (1) unit per carton
- (1) internal universal access point mounting T-bar bracket
- (4) Hanger wires, (2) tile bridges
- (1) cable egress fire stop kit (3/4" trade size conduit connector, and fire block stop insert)
- (2) keys for lock
- Installation Instructions
- Shipping Weight: Approximately 7 lbs.

Accessories

- P/N 35-CBXJ2WH-A surface mount modular receptacle to terminate horizontal cable in the enclosure

Customer Print and Installation Instructions

Visit www.oberonwireless.com

Rev. 10/03/2013

Model 1075-WA or CP

Suspended Ceiling Enclosure for Wireless Access Points

The Model 1075-WA or CP is a ceiling tile cut-in enclosure designed to secure wireless access points, digital media gateways, and other wireless components in the workspace. This aesthetic, white powder coated steel and aluminum enclosure has an impact resistant, RF transparent dome that extends only 2" below the ceiling plane sig. The –WA dome is a textured white ABS material, the – CP is a clear polycarbonate best suited for digital media gateways with an infrared control signal. Access points attach to an interior T-bar bracket. The 1075 series has interchangeable retrofit doors, allowing current owners to install new AP or antenna solutions from different vendors, simply by swapping doors, and without lifting ceiling tiles. This enclosure fits into a cutout in the ceiling tile, and is only 3" deep so it works where there is little overhead space above the suspended ceiling.



Model 1075-WA shown with Aruba Networks AP225 (not included)

Features

- 15" x 15" ceiling enclosure designed for wireless access points with body integrated and non-detachable antennas from most manufacturers
- UL listed and designed to meet National Electric Code Paragraphs 300-22 and 300-23 for installation in the above ceiling space; OSHPD approved (OPA File No. 1638-10)
- Universal T-bar mounting bracket allows easy installation of most vendors' access points
- Durable, attractive, textured powder coat finish matches most ceiling tiles
- Durable, attractive, dome (white ABS or clear polycarbonate) is virtually transparent to wireless signals
- Fully-hinged locking door, keyed alike
- Shallow back box (3") simplifies installation in ceilings with little space above ceiling tiles
- Interchangeable doors permit simple migration to new access points and antennas
- Enclosure back box is effective dust barrier to simplify ICRA procedure compliance



Specifications

- The enclosure back box, door frame, and flange are aluminum and steel, so WAP must be installed such that antennas (or face of WAP if antennas are integrated) are largely within the dome. There is very little impact on WAP coverage with antennas or AP face largely inside dome.
- Back-box is 16 ga. aluminum; door and flange are textured, white powder-coated steel. RoHS compliant
- Dome is 10" x 10" x 1 1/2". Textured white ABS (-WA) is UL 94-5VA classified, and clear polycarbonate (-CP) is UL 94-5VB classified
- Size: Flange is 15" x 15", back-box is 12 3/4" x 12 3/4" x 3" deep
- Knockouts for AC receptacle, (2) keystone jacks, (2) 3/4" trade conduit connector
- Maximum weight to be installed inside the unit is 25 lbs.
- De-rate upper operating temperature limit 10°C when AP in the enclosure
- Enclosure must be supported by the building structure, independent of the suspended ceiling

Model 1075 Configurations

Interchangeable doors allow the 107X Series ceiling enclosure to be customized to different vendor's product.

MODEL NUMBER	DESIGNED FOR	DESCRIPTION
107X-CP	Apple TV, other digital gateways, or wireless APs	Clear polycarbonate dome in the door passes wireless and IR signal, digital gateway inside
107X-WA	Wireless APs	Opaque white ABS dome in the door passes wireless signal, AP inside
107X-CCOAP	Cisco Access Points	Cisco AP is locked into door, fully exposing front of AP
107X-AN-AP135	Aruba Networks AP	Aruba Networks AP-135 is locked into door, exposing front of AP
107X-00	External antennas	External antennas mount on door, AP inside. MUST use Oberon 35-BLKHD-KIT, 34-ZDUAL antennas, or ceiling mount antennas

Includes

- (1) unit per carton
- (1) internal universal access point mounting T-bar bracket
- (4) Hanger wires, (2) Tile bridges
- (1) cable egress fire stop kit (3/4" trade size conduit connector, and fire stop foam insert)
- (2) keys for lock
- Installation Instructions
- Shipping Weight: Approximately 10 lbs.

Accessories

- P/N 35-CBXJ2WH-A surface mount modular receptacle to terminate horizontal cable in the enclosure

Customer Print and Installation Instructions

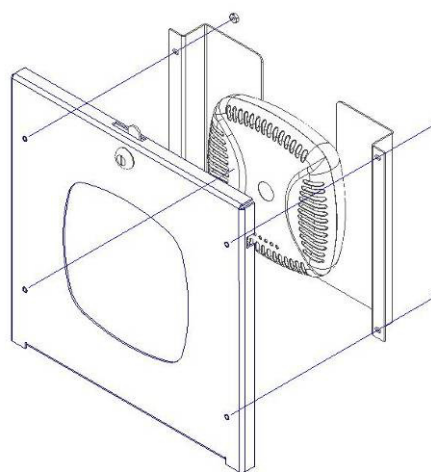
Visit www.oberonwireless.com

rev 10/03/2013

Model 1076-AP135

Locking Recess Wall/Ceiling Mount for Aruba Networks APs

The Model 1076-AP135 wireless LAN access point mounting solution is a locking, recessed wall or hard ceiling insert designed specifically to secure the Aruba Networks AP-135 series wireless access points while satisfying UL criteria for heat and visible smoke release in air-handling spaces. This aesthetic, white powder-coated all steel enclosure has a bracket in the door to which the access point is attached. When the door is closed, the access point is locked in place and the enclosure preserves the UL criteria. Installation requires a square opening to be cut into the wall or ceiling. The 15" square beveled flange conceals the opening in the wall. The enclosure is retained in place by two wall bridges. Interchangeable doors permit migration to different equipment in the future without removing enclosure from the wall.



Model 1076-AP135 shown with Aruba Networks AP135 wireless access point (not included)

Specifications:

- Recessed wall or ceiling enclosure designed to secure Aruba Networks wireless access points (WAPs)
- UL Listed and designed to meet NEC300-22 and 300-23 for plenum installations
- Construction: 16 ga. galvaneal back-box, textured white powder-coated 14 ga. steel door and flange
- Fully hinged locking door, keyed alike
- Size: Flange is 15" x 15", back-box is 12.75" x 12.75" x 3" deep
- Weight: 13lbs (not including access point or antennas)
- Enclosure must be supported by the wall bridges

Model 1076-CCOAP Includes:

- (2) Wall bridges
- (4) No. 8-32 hex nuts
- (1) fireblock cable egress kit
- Mounting Instructions



Model 1076-WA or CP

Recess Wall Enclosure for Wireless Access Points

The Model 1076-WA or CP is a recessed wall or hard ceiling enclosure with beveled flange, designed to secure wireless access points, digital media gateways, and other wireless components in the workspace. This aesthetic, white powder coated steel enclosure has an impact resistant, RF transparent dome that extends only 1 1/2" from the face. The -WA dome is a textured white ABS material, the -CP is a clear polycarbonate best suited for digital media gateways with an infrared control signal. Access points attach to an interior T-bar bracket. The 1076 series has interchangeable retrofit doors, allowing current owners to install new AP or antenna solutions from different vendors, simply by swapping doors. This enclosure is only 3" deep so it fits into standard walls



Model 1076-WA shown with Aruba Networks AP225 (not included)

Features

- Recessed wall or hard ceiling enclosure with 15" beveled flange, designed for wireless access points and digital media gateways with body integrated or non-detachable antennas from most manufacturers
- UL listed and designed to meet National Electric Code Paragraphs 300-22 and 300-23 for installation in the above ceiling space; OSHPD approved (OPA File No. 1638-10)
- Universal T-bar mounting bracket allows easy installation of most vendors' access points
- Durable, attractive, textured powder coat finish matches most ceiling tiles
- Durable, attractive, dome (white ABS or clear polycarbonate) is virtually transparent to wireless signals
- Fully-hinged locking door, keyed alike
- Shallow back box (3") simplifies installation in the wall or ceilings
- Interchangeable doors permit simple migration to new access points and antennas
- Enclosure back box is effective dust barrier to simplify ICRA procedure compliance



Specifications

- The enclosure back box, door frame, and flange are steel, so WAP must be installed such that antennas, (or face of WAP if antennas are integrated) are largely within the dome. There is very little impact on WAP coverage with antennas or AP face largely inside dome.
- Back-box is 16 ga. galvanized steel; door and flange are textured, white powder-coated steel. RoHS compliant
- Dome is 10" x 10" x 1 1/2". Textured white ABS (-WA) is UL 94-5VA classified, and clear polycarbonate (-CP) is UL 94-5VB classified
- Size: Flange is 15" x 15", back-box is 12 3/4" x 12 3/4" x 3" deep
- Knockouts for AC receptacle, (2) keystone jacks, (2) 3/4" trade conduit connector
- Maximum weight to be installed inside the unit is 25 lbs.
- De-rate upper operating temperature limit 10°C when AP in the enclosure
- Enclosure must be supported by the building structure, independent of the suspended ceiling

Model 1076 Configurations

Interchangeable doors allow the 107X Series ceiling enclosure to be customized to different vendor's product.

MODEL NUMBER	DESIGNED FOR	DESCRIPTION
107X-CP	Apple TV, other digital gateways, or wireless APs	Clear polycarbonate dome in the door passes wireless and IR signal, digital gateway inside
107X-WA	Wireless APs	Opaque white ABS dome in the door passes wireless signal, AP inside
107X-CCOAP	Cisco Access Points	Cisco AP is locked into door, fully exposing front of AP
107X-AN-AP135	Aruba Networks AP	Aruba Networks AP-135 is locked into door, exposing front of AP
107X-00	External antennas	External antennas mount on door, AP inside. MUST use Oberon 35-BLKHD-KIT, 34-ZDUAL antennas, or ceiling mount antennas

Includes

- (1) unit per carton
- (1) internal universal access point mounting T-bar bracket
- (4) Hanger wires, (2) Wall bridges
- (1) cable egress fire stop kit (3/4" trade size conduit connector, and fire stop foam insert)
- (2) keys for lock
- Installation Instructions
- Shipping Weight: Approximately 15 lbs.

Accessories

- P/N 35-CBXJ2WH-A surface mount modular receptacle to terminate horizontal cable in the enclosure

Customer Print and Installation Instructions

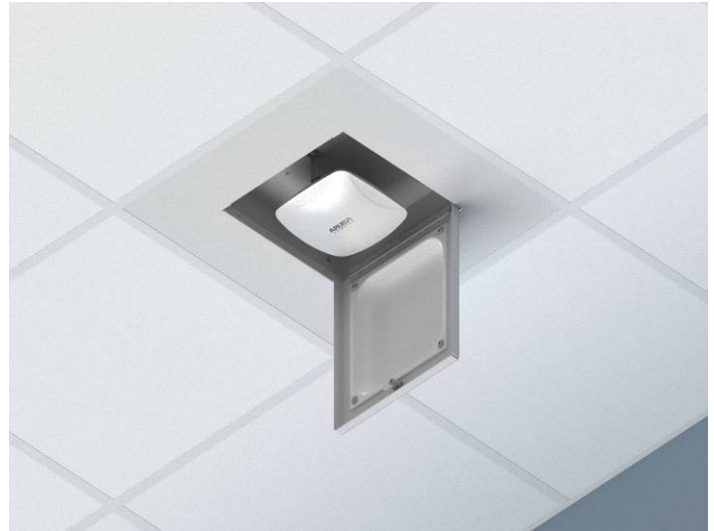
Visit www.oberonwireless.com

rev 10/03/2013

Model 1077-WA or CP

Suspended Ceiling Enclosure for Wireless Access Points

The Model 1077-WA or CP is a 2' x 2' ceiling enclosure designed to secure wireless access points, digital media gateways, and other wireless components in the workspace. This aesthetic, white powder coated steel and aluminum enclosure has an impact resistant, RF transparent dome that extends only 1 ½" below the ceiling plane. The -WA dome is a textured white ABS material, the -CP is a clear polycarbonate best suited for digital media gateways with an infrared control signal. Access points attach to an interior T-bar bracket. The 1077 series has interchangeable retrofit doors, allowing current owners to install new AP or antenna solutions from different vendors, simply by swapping doors, and without lifting ceiling tiles. This enclosure is only 3" deep so it works where there is little overhead space above the suspended ceiling.



Model 1077-WA shown with Aruba Networks AP225 (not included)

Features

- 2' x 2' suspended ceiling enclosure designed for wireless access points and digital media gateways with body integrated and non-detachable antennas from most manufacturers
- UL listed and designed to meet National Electric Code Paragraphs 300-22 and 300-23 for installation in the above ceiling space; OSHPD approved (OPA File No. 1638-10)
- Universal T-bar mounting bracket allows easy installation of most vendors' access points
- Durable, attractive, textured powder coat finish matches most ceiling tiles
- Durable, attractive, plastic dome (white ABS or clear polycarbonate) is virtually transparent to wireless signals
- Fully-hinged locking door, keyed alike
- Shallow back box (3") simplifies installation in ceilings with little space above ceiling tiles
- Interchangeable doors permit simple migration to new access points and antennas
- Enclosure back box is effective dust barrier to simplify ICRA procedure compliance



Specifications

- The enclosure back box, door frame, and flange are aluminum and steel, so WAP must be installed such that antennas, (or face of WAP if antennas are integrated) are largely within the dome. There is very little impact on WAP coverage with antennas or AP face largely inside dome.
- Back-box is 16 ga. aluminum; door and flange are textured, white powder-coated steel. RoHS compliant
- Dome is 10" x 10" x 1 ½". Textured white ABS dome (-WA) is UL 94-5VA classified, and clear polycarbonate dome (-CP) is UL 94-5VB classified .
- Size: Flange is 24" x 24", back-box is 12 ¾" x 12 ¾" x 3" deep
- Knockouts for AC receptacle, (2) keystone jacks, (2) ¾" trade conduit connector
- Maximum weight to be installed inside the unit is 25 lbs.
- De-rate upper operating temperature limit 10°C when AP in the enclosure
- Enclosure must be supported by the building structure, independent of the suspended ceiling

Model 1077 Configurations

Interchangeable doors allow the 107X Series ceiling enclosure to be customized to different vendor's product.

MODEL NUMBER	DESIGNED FOR	DESCRIPTION
107X-CP	Apple TV, other digital gateways, or wireless APs	Clear polycarbonate dome in the door passes wireless and IR signal, digital gateway inside
107X-WA	Wireless APs	Opaque white ABS dome in the door passes wireless signal, AP inside
107X-CCOAP	Cisco Access Points	Cisco AP is locked into door, fully exposing front of AP
107X-AN-AP135	Aruba Networks AP	Aruba Networks AP-135 is locked into door, exposing front of AP
107X-00	External antennas	External antennas mount on door, AP inside. MUST use Oberon 35-BLKHD-KIT, 34-ZDUAL antennas, or ceiling mount antennas

Includes

- (1) unit per carton
- (1) internal universal access point mounting T-bar bracket
- (4) Hanger wires
- (1) cable egress fire stop kit (¾" trade size conduit connector, and fire stop foam insert)
- (2) keys for lock
- Installation Instructions
- Shipping Weight: Approximately 14 lbs.

Accessories

- P/N 35-CBXJ2WH-A surface mount modular receptacle to terminate horizontal cable in the enclosure

Customer Print and Installation Instructions

Visit www.oberonwireless.com

rev 10/03/2013

Model 1078-AP135

Locking Recess Wall/Ceiling Mount for Aruba Networks APs

The Model 1078-AP135 wireless LAN access point mounting solution is a locking, recessed wall or hard ceiling insert designed specifically to secure the Aruba Networks AP135 series access points while satisfying UL criteria for heat and visible smoke release in air-handling spaces. This aesthetic, white powder-coated all steel enclosure has a bracket in the door to which the access point is attached. When the door is closed, the access point is locked in place and the enclosure preserves the UL criteria. Installation requires a square opening to be cut into the wall or ceiling. The enclosure has a "mud ring" so that it can be finished into the wall, and only the door is visible. The enclosure is retained in place by two wall bridges. Interchangeable doors permit migration to different equipment in the future without removing enclosure from the wall.



Model 1078-AP135 shown with Aruba Networks AP135 wireless access point (not included)

Specifications:

- Recessed wall or ceiling enclosure designed to secure Aruba Networks AP135 access points
- UL Listed and designed to meet NEC300-22 and 300-23 for plenum installations
- Construction: 16 ga. galvaneal back-box, textured white powder-coated 14 ga. steel door, and "mud ring" flange
- Fully hinged locking door, keyed alike
- Size: "mud ring" is 15" x 15", back-box is 12.75" x 12.75" x 3" deep
- Weight: 13lbs (not including access point or antennas)
- Enclosure must be supported by the wall bridges

Model 1078-AP135 Includes:

- (2) Wall bridges
- (4) No. 8-32 hex nuts
- (1) fireblock cable egress kit
- Mounting Instructions



Model 1078-WA or CP

Recess Wall Enclosure for Wireless Access Points

The Model 1078-WA or CP is a recessed wall or hard ceiling enclosure with “mud-ring” flange, designed to secure wireless access points, digital media gateways, and other wireless components in the workspace. This aesthetic, white powder coated steel enclosure has an impact resistant, RF transparent dome that extends only 1 ½” from the face. The –WA dome is a textured white ABS material, the –CP is a clear polycarbonate best suited for digital media gateways with an infrared control signal. Access points attach to an interior T-bar bracket. The 1076 series has interchangeable retrofit doors, allowing current owners to install new AP or antenna solutions from different vendors, simply by swapping doors. This enclosure is only 3” deep so it fits into standard walls.



Model 1078-WA shown with Aruba Networks AP225 (not included)

Features

- Recessed wall or hard ceiling enclosure with “mud ring” flange, designed for wireless access points and digital media gateways with body integrated or non-detachable antennas from most manufacturers. Mud ring permits enclosure to be nicely finished into the wall, revealing only the door
- UL listed and designed to meet National Electric Code Paragraphs 300-22 and 300-23 for installation in the above ceiling space; OSHPD approved (OPA File No. 1638-10)
- Universal T-bar mounting bracket allows easy installation of most vendors’ access points
- Durable, attractive, textured powder coat finish matches most ceiling tiles
- Durable, attractive, dome (white ABS or clear polycarbonate) is virtually transparent to wireless signals
- Fully-hinged locking door, keyed alike
- Shallow back box (3”) simplifies installation in the wall or ceilings
- Interchangeable doors permit simple migration to new access points and antennas
- Enclosure back box is effective dust barrier to simplify ICRA procedure compliance



Specification

- The enclosure back box, door frame, and flange are steel, so WAP must be installed such that antennas, (or face of WAP if antennas are integrated) are largely within the dome. There is very little impact on WAP coverage with antennas or AP face largely inside dome
- Back-box is 16 ga. galvanized steel; door and flange are textured, white powder-coated steel. RoHS compliant
- Dome is 10" x 10" x 1 ½". Textured white ABS dome (-WA) is UL 94-5VA classified, and clear polycarbonate dome (-CP) is UL 94-5VB classified Size: "mud ring" is 15" x 15", back box is 12.75" x 12.75" x 3" deep
- Knockouts for AC receptacle, (2) keystone jacks, (2) ¾" trade conduit connector
- Maximum weight to be installed inside the unit is 25 lbs.
- De-rate upper operating temperature limit 10°C when AP in the enclosure
- Enclosure must be supported by the building structure, independent of the suspended ceiling

Model 1078 Configurations

Interchangeable doors allow the 107X Series ceiling enclosure to be customized to different vendor's product.

MODEL NUMBER	DESIGNED FOR	DESCRIPTION
107X-CP	Apple TV, other digital gateways, or wireless APs	Clear polycarbonate dome in the door passes wireless and IR signal, digital gateway inside
107X-WA	Wireless APs	Opaque white ABS dome in the door passes wireless signal, AP inside
107X-CCOAP	Cisco Access Points	Cisco AP is locked into door, fully exposing front of AP
107X-AN-AP135	Aruba Networks AP	Aruba Networks AP-135 is locked into door, exposing front of AP
107X-00	External antennas	External antennas mount on door, AP inside. MUST use Oberon 35-BLKHD-KIT, 34-ZDUAL antennas, or ceiling mount antennas

Includes

- (1) unit per carton
- (1) internal universal access point mounting T-bar bracket
- (4) Hanger wires, (2) Wall bridges
- (1) cable egress fire stop kit (¾" trade size conduit connector, and fire stop foam insert)
- (2) keys for lock
- Installation Instructions
- Shipping Weight: Approximately 13 lbs.

Accessories

- P/N 35-CBXJ2WH-A surface mount modular receptacle to terminate horizontal cable in the enclosure

Customer Print and Installation Instructions

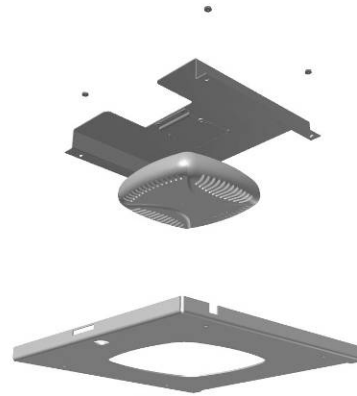
Visit www.oberonwireless.com

rev 10/03/2013

Model 38-52-AP135

Retrofit Doors for Model 105(X) Series Enclosures

Oberon's Model 1052-00 wireless LAN access point enclosure is a locking 2' x 2' ceiling tile enclosure originally designed for the Cisco 1242, Cisco 1232, and Aruba Networks AP-70 access points. For customers making the migration to the Aruba Networks AP135 802.11n wireless access point, Oberon has designed the 38-52-AP135 adaptor door so customers may install the new access point in the existing enclosure without removing the enclosure from the ceiling. The upgrade simply requires that the existing 1052-00 door is removed (three interior nuts), the new access point is attached to the adaptor door, and the adaptor door is attached to the enclosure. The upgrade maintains the enclosure's UL 50 design criteria, and provides the same level of physical security as previously provided. Upgrades are performed without accessing the air-handling space above the ceiling.



- 1) Model 1052-AP135 shown with Aruba Networks AP135 access point (not included)
- 2) Exploded view of the door, access point, and bracket

Specifications:

- Adaptor door designed to mount the Aruba Networks AP135 802.11n wireless access point into existing Oberon Model 1052-00 ceiling tile enclosures
- OSHPD approved OPA #1638
- With adaptor door properly installed, the assembly is UL listed and designed to meet National Electric Code paragraphs 300-22 and 300-23 for plenum installations
- Construction: Textured white powder-coated steel, 14 ga. door
- Fully-hinged locking door; keyed alike
- Adaptor door is attached to enclosure with (3) nuts

Model 38-52-AP135 Includes:

- 1 Unit per carton
- Adaptor door
- Assembly mount bracket and nuts
- (2) Keys for lock
- Installation instructions

Rev. 3/20/2013



Model 38-52-AN

Retrofit Doors for Model 105(X) Series Enclosures

Oberon’s Model 1052-00 wireless LAN access point enclosure is a locking 2’ x 2’ ceiling tile enclosure originally designed for the Cisco 1242, Cisco 1232, and Aruba Networks AP-70 access points. This adaptor door is designed specifically for the Aruba Networks AP-ANT-13B antennas. Oberon has designed this adaptor door so that customers may install new Aruba Networks access points with connectors in the existing enclosure, without removing the enclosure from the ceiling. The upgrade simply requires that the existing 1052-00 door is removed (three interior nuts), the new antenna is attached to the adaptor door, and the adaptor door is attached to the enclosure. The upgrade maintains the enclosure’s UL 50 design criteria, and provides the same level of physical security as previously provided. Upgrades are performed without accessing the air handling space above the ceiling.



Model 1052-00 shown with 38-52-AN door and Aruba Networks AP-ANT-13B dual band antennas (not included)

Specifications:

- OSHPD approved OPA #1638
- With adaptor door properly installed, the assembly is UL listed and designed to meet National Electric Code paragraphs 300-22 and 300-23 for plenum installations
- Construction: Textured white powder-coated steel, 14 ga. door
- Fully-hinged locking door; keyed alike
- Adaptor door is attached to enclosure with (3) nuts

Model 38-52-ANT16 Includes:

- 1 Unit per carton
- Adaptor door
- Assembly mount bracket and nuts
- (2) Keys for lock
- Installation instructions

Rev. 3/20/2013



Model 38-52-ANT16

Retrofit Doors for Model 105(X) Series Enclosures

Oberon's Model 1052-00 wireless LAN access point enclosure is a locking 2' x 2' ceiling tile enclosure originally designed for the Cisco 1242, Cisco 1232, and Aruba Networks AP-70 access points. This adaptor door is designed specifically for the Aruba Networks AP-ANT16 3 in 1 MIMO antenna. Oberon has designed this adaptor door so customers may install new Aruba Networks access points with connectors in the existing enclosure, without removing the enclosure from the ceiling. The upgrade simply requires that the existing 1052-00 door is removed (three interior nuts), the new antenna is attached to the adaptor door and the adaptor door is attached to the enclosure. The upgrade maintains the enclosure's UL 50 design criteria, and provides the same level of physical security as previously provided. Upgrades are performed without accessing the air-handling space above the ceiling.



Model 1052-00 shown with 38-52-ANT16 door and Aruba Networks AP-ANT-16 MIMO dual band antenna (not included)

Specifications:

- Ceiling tile enclosure door specifically designed for Aruba Networks AP-ANT16 antenna
- OSHPD approved OPA #1638
- With adaptor door properly installed, the assembly is UL listed and designed to meet National Electric Code paragraphs 300-22 and 300-23 for plenum installations
- Construction: Textured white powder-coated steel, 14 ga. door
- Fully-hinged locking door; keyed alike
- Adaptor door is attached to enclosure with (3) nuts

Model 38-52-ANT16 Includes:

- 1 Unit per carton
- Adaptor door
- Assembly mount bracket and nuts
- (2) Keys for lock
- Installation instructions

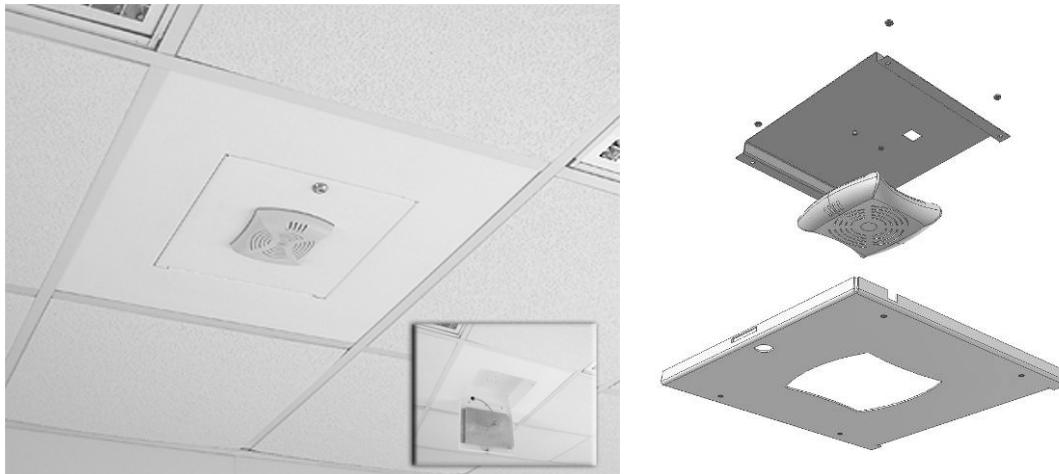
Rev. 3/21/2013



Model 38-52-AP105

Adaptor Doors

Oberon's Model 1052-00 wireless LAN access point enclosure is a locking 2' x 2' ceiling tile enclosure originally designed for the Cisco 1242, Cisco 1232, and Aruba Networks AP-70 access points. For customers making the migration to the Aruba Networks AP105 802.11n wireless access point, Oberon has designed the 38-52-AP105 adaptor door so customers may install the new access point in the existing enclosure without removing the enclosure from the ceiling. The upgrade simply requires that the existing 1052-00 door is removed (three interior nuts), the new access point is attached to the adaptor door, and the adaptor door is attached to the enclosure. The upgrade maintains the enclosure's UL 50 design criteria, and provides the same level of physical security as previously provided. Upgrades are performed without accessing the air-handling space above the ceiling.



- 1) Model 1052-AP105 shown with 38-52-AP105 and Aruba Networks AP105 access point (not included)
- 2) Exploded view of the door, access point, and bracket

Specifications:

- OSHPD approved OPA #1638
- With adaptor door properly installed, the assembly is UL listed and designed to meet National Electric Code paragraphs 300-22 and 300-23 for plenum installations
- Construction: Textured white powder-coated steel, 14 ga. door
- Fully-hinged locking door; keyed alike
- Adaptor door is attached to enclosure with (3) nuts

Model 38-52-AP105 Includes:

- 1 Unit per carton
- Adaptor door
- Assembly mount bracket and nuts
- (2) Keys for lock
- Installation instructions

Rev. 3/21/2013



Appendix– Warranty

Terms and Conditions

Sale of Equipment – Seller agrees to sell the equipment specified on any quotation, sales order, invoice, or packing slip to Buyer upon the terms and conditions stated below.

Shipment – Unless special arrangements are made, ownership of the goods and risk of damage/loss passes to Buyer when the freight carrier picks them up from Seller, and Buyer is responsible for filing any freight claims for damage or loss. If an item is received with freight damage, it is very important for the Buyer to note "Damaged Freight" on the carrier's bill before signing it.

Freight and Other Charges – Freight charges are prepaid by Seller and added to Buyer's invoice plus a service/handling charge. Sales tax will be charged as required by law.

Credit and Payment Terms – Standard credit terms are Net 30. Oberon accepts company checks, certified checks, Visa or MasterCard. Payments on past due invoices will be subject to a "Late Charge" in the amount of 1½% per month.

Returns and Exchanges – Returned hardware may be subject to a restocking fee of 20% for enclosure products and 10% for all other products. No returns will be accepted for customized orders, special cable order, etc. Returned units must be in original package, undamaged. No returns after 90 days. Customer shall insure return shipment for value of the product. Customer shall be responsible for legal and other fees associated with collection of payments for past due amounts.

Limited Warranty

Equipment manufactured by Seller – Seller warrants to Buyer that the equipment will be free of defects in materials and workmanship for a period of one (1) year from the date of shipment. This warranty shall not apply to any equipment, which is misused, or for any damage to the equipment resulting from improper installation or operation, vandalism, acts of God, or any other cause beyond reasonable control of the seller. This warranty shall be void if the equipment has been altered, tampered with, or repaired by a party other than the Seller or its authorized representative. In the event of equipment failure within the warranty period, Seller will repair or replace the defective equipment, at its option, provided that Buyer notifies Seller and obtains a RMA number prior to returning the equipment to Seller. Defective equipment must be returned, shipping prepaid, to the Seller's specified address. The warranty on repaired or replaced equipment will be the balance of the original Equipment Warranty. This Warranty Is In Lieu Of All Other Warranties, Express or Implied, Including, Without Limitation, Statutory Warranties or Warranty of Merchantability or Fitness for a Particular Purpose. Seller's sole liability and buyer's sole remedy hereunder will be repair or replacement of the Equipment as provided in this agreement.

Other Equipment – Seller will pass through to Buyer all original Manufacturers' Warranties that may apply to the equipment. Seller may, at its option, process warranty requests by the Buyer to the Original Manufacturer, or refer the Buyer to the Original Manufacturer. Seller is not responsible for any warranty-related issues.

Applications – By placing an order with Oberon, Buyer agrees to these terms and conditions regarding this order and any subsequent orders, and no modifications or other terms are binding on Buyer without prior written approval. Pennsylvania Law Applies.

Manufacturing and Support

Oberon's specialty is wireless and telecom enclosure and mounting solutions, and the products are designed and tested by an experienced technical staff with extensive wireless networking survey, design, and installation experience. Oberon's products have been tested with most of the industry-leading wireless networking vendor products.

As a product and custom design service vendor, we provide outstanding support to our market channel partners: the distributors, network designers, installers, and integrators responsible for enterprise wireless LAN installation. Our combination of patent-pending, innovative products and industry-experienced staff will provide the wireless infrastructure designer exceptional cost, performance, security, aesthetic, and installation value.

Since 1999, Oberon has been a leader in manufacturing solutions for conveniently installing and securing wireless network components

© 2013 Oberon, Inc. Copyright. All Rights Reserved. All text, images, graphics, and other materials contained in this catalog are subject to the copyright and other intellectual property rights of Oberon, Inc. These materials may not be reproduced, distributed, modified or reposted to other websites without the express written permission of Oberon, Inc.

Catalog last updated on 10/4/2013