

# Enterprise Security and Safety Solutions

Network infrastructure for security and safety systems.

**1** Network Security: Lock-in and Blockout Devices



**2** Raceway



**3** Abrasion Protection



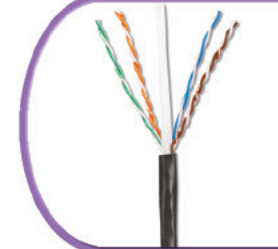
**4** Identification and Labeling Systems



**5** StrongHold™ Supports and Fasteners



**6** Copper Cabling Systems: Jacks, Patch Cords, Cable, Patch Panels



**7** Outside Plant Copper Cable



**8** StructuredGround™ Grounding Kits



**9** TakTy™ Hook and Loop Cable Ties

Scroll Down for Next Page

**PANDUIT**®

# Enterprise Security and Safety Solutions

Today's rapidly changing security marketplace leaves facility and IT managers wondering how to manage it all.

## Engagement Questions

- Are you interested in making the most of your security infrastructure investment?
  - Panduit's structured cabling system can shift your network from access point to IP camera in a moment's notice.
- Are you interested in maximizing your security system uptime?
  - J-hooks and other StrongHold™ Supports and Fasteners from Panduit install with ease to safely and securely route cabling to cameras, access control devices, and safety systems for speedy installation.
- Are moves, adds, and changes a common occurrence within your enterprise?
  - Panduit has a wide range of identification products to give technicians confidence they're making the right moves

## Top Product Listing

### 1 Network Security: Lock-in and Blockout Devices

Prevent unauthorized access to network connections.

Jack Module block-out device – PSL-DCJB

RJ45 plug lock-in device – PSL-DCPL

USB Type "A" blockout device – PSL-USBA

LC duplex adaptor blockout device – PSL-LCAB

SC adaptor blockout device – PSL-SCBD

### 2 Raceway

Route, protect, and conceal wiring within the Enterprise environment.

One-piece latching surface raceway – LD5IW6-A

Outlet box surface raceway – JBX3510IW-A

### 3 Abrasion Protection

Protect cabling in any environment.

Braided Expandable Sleeving – SE25P-MR0

Corrugated Loom Tubing – CLT50F-C20

Spiral Wrap – T75F-C

### 4 Identification and Labeling Systems

Meet communication labeling standards with a comprehensive line of labels and printers.

Hand-held printer with QWERTY keyboard – LS8EQ-KIT

Turn-Tell™ Label – R100X150V1C

### 5 StrongHold™ Supports and Fasteners

Reliable, high-quality solution for routing and securing cabling.

J-Hooks – JP2SBC50RB-L20

Conduit Clips – P16M24

Strut Clamps – PSCH16B

Bridle Rings – BR-2.0

### 6 Copper Cabling System

Category 6A, 6, and 5e solutions for demanding applications.

Jack, Category 6A, blue – CJ6X88TGBU

Jack, Category 6, blue – CJ688TGBU

Plug, field terminable – ISPS688FA

Cable, Category 6A, plenum – PUP6AM04BU-UG

Cable, Category 6, plenum – PUP6004BU-W

Patch Cord, Category 6A, 26 AWG – UTP6ASD7BU

Patch Cord, Category 6A, solid, plenum – UZPPBU25

Patch Cord, Category 6, 28 AWG – UTP28SP7BU

Patch Panel, Modular, 24-port – CPPL24WBLY

Patch Panel, Modular, 24-port shielded – CP24BLY

### 7 Outside Plant Copper Cable

Cable for exterior applications such as cameras.

Cable, Category 6, OSP – PU06C04BL-U

### 8 StructuredGround™ Grounding Kit

Route and support grounding conductors while bonding sections together to create electrical continuity.

RGCBNJ660P22

### 9 TakTy™ Hook and Loop Cable Ties

Quickly and easily bundle and manage cords and cables.

Hook and Loop Strip – HLS1.5S-X6

Hook and Loop Roll, 35' – TTS-35RX0

Plenum Rated Tie – HLTP2I-X0

Cinch Tie with Grommet – UGCTC3S-X0

Elastomeric Tie, 8.5" – ERT2M-C20