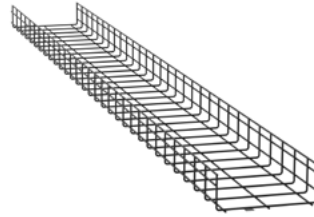


Panduit Wire Basket Cable Tray Routing System

specifications

The overhead cable tray routing system shall consist of pathway sections, splice connectors, sidewalls, waterfalls, mounting brackets, and accessories designed to route and manage copper, fiber optic, or power cables. The pathway sections shall be provided in the various widths: 4", 6", 8", 12", 18", 24". The baskets come in the various wall heights: 2", 4" and 6" heights. Trapeze, cantilever, and wall mount brackets are available to support the system. Baskets, accessories and components are available in black, electro zinc and white.



technical information

Material:	Black (BL) & White (WH): Steel wire, powder coated black or white Electro Zinc (EZ): Steel wire electro zinc plated
Approvals:	UL Classified for their suitability for use as Equipment Grounding Conductor in accordance with Sections 392.6(A) and 392.6(B) of the NFPA 70 National Electric Code with AMD 1-5 and NEMA VE1 Black and White: Complies with ASTM 510 Electro Zinc: ASTM B633 SC3, Type III

key features and benefits

Strength to weight ratio	The design of the Wire Basket Pathway Sections provides a greater strength to weight ratio than competitive wire basket; easier handling translates into faster installation
Grid pattern	The wire mesh grid pattern allows greater amounts of cables and QuickNet [®] Cassettes to pass grid openings without additional cutting, reducing installation time
Wire	Maintain better safe working load than those in the market with the use of less wires. Less wire means less cutting with aids in reducing the sharp edges
Waterfalls	Cable exit that provide proper bend radius control and are available in various sizes
Bend radius control intersection	Protects cables at intersections and can be easily attached
Splices	Various Splices available which include the following: expansion splice, tool-less splice and bolted splice

applications

The Panduit Wire Basket is designed to route and manage copper data cables, fiber optic, or power cables within data centers, connected buildings, and industrial automation applications. Innovative features provide quick, safe, and easy assembly for reduced installation costs and faster deployment.

Wire Basket Pathway Sections

Various Baskets in Black:	PWB*x**BL
Various Baskets in EZ:	PWB*x**EZ
Various Baskets in White:	PWB*x**WH

*: Height of Side Wall
**: Width of Basket

Splices

Bolted Kit:	PWBSPLBL(EZ)
Expansion:	PWBFESBL(EZ)
Push On:	PWBPSBL(EZ)

Tee Fitting

2" Sidewall:	PWBPF2x**BL (EZ,WH)
4" Sidewall:	PWBPF4x**BL (EZ,WH)
6" Sidewall:	PWBPF6x**BL (EZ,WH)

**: Width of Basket

Waterfall

Narrow Bottom:	PWBWFNBL (EZ, WH)
Wide Bottom:	PWBWFBL (EZ, WH)
12" Drop Out:	PWBDOKBL (EZ, WH)

SpillOut

2" Exit:	PWBSPJ2BL
4" Exit:	PWBSPJ4BL

Mounting Brackets

4" trapeze bracket:	PWBTB4BL (EZ, WH)
6" trapeze bracket:	PWBTB6BL (EZ, WH)
8" trapeze bracket:	PWBTB8BL (EZ, WH)
12" trapeze bracket:	PWBTB12BL (EZ,WH)
18" trapeze bracket:	PWBTB18BL (EZ, WH)
24" trapeze bracket:	PWBTB24BL (EZ, WH)
6"-12" trapeze hanging support:	PWBTBSEZ**
4" cantilever bracket:	PWBCB4BL (EZ, WH)
6" cantilever bracket:	PWBCB6BL (EZ, WH)
8" cantilever bracket:	PWBCB8BL (EZ, WH)
12" cantilever bracket:	PWBCB12BL (EZ,WH)
18" cantilever bracket:	PWBCB18BL (EZ, WH)
24" cantilever bracket:	PWBCB24BL (EZ, WH)

Additional Mounting Brackets

Vertical Wall Mount:	PWBWMBVBL (WH,EZ)
Narrow Wall Mount:	PWBWMNBL (WH, EZ)
Wide Wall Mount:	PWBWMWBL (WH, EZ)
Strut bracket:	PWBSCEZ

Intersection Bend Radius Control

2" high sidewall:	PWBIB2BL (EZ, WH)
4" high sidewall:	PWBIB4BL (EZ, WH)
6" high sidewall:	PWBIB6BL (EZ, WH)

Tray Liner

4" tray liner:	PWBTL4BL (PG, WH)
6" tray liner:	PWBTL6BL (PG,WH)
8" tray liner:	PWBTL8BL (PG,WH)
12" tray liner:	PWBTL12BL (PG, WH)
18" tray liner:	PWBTL18BL (PG, WH)
24" tray liner:	PWBTL24BL (PG,WH)

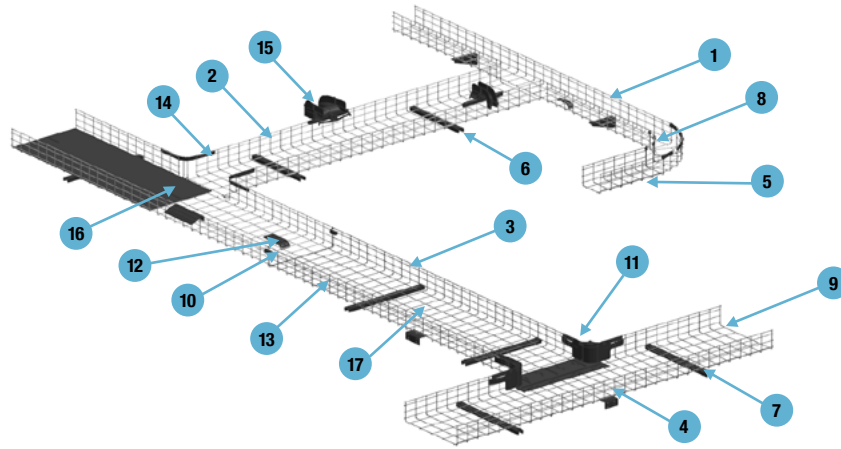
Divider Wall

2" divider wall:	PWBTL4BL (PG, WH)
4" divider wall:	PWBTDW4BL (PG,WH)
6" divider wall:	PWBTDW6BL (PG,WH)

Accessories

Manual cutting tool:	WGCT-M
Hydraulic cutting tool:	WGCT-A
Hardware kit:	WGHRDWKT**

Wire Basket Overhead Cable Tray Routing System



Pathway Sections



- 4" Width: PWBxX4**
- 6" Width: PWBxX6**
- 1 8" Width: PWBxX8**
- 2 12" Width: PWBxX12**
- 3 18" Width: PWBxX18**
- 4 24" Width: PWBxX24**

Mounting Brackets

Trapeze Brackets



- 4" Wide: PWBTB4**
- 6" Wide: PWBTB6**
- 5 8" Wide: PWBTB8**
- 6 12" Wide: PWBTB12**
- 18" Wide: PWBTB18**
- 7 24" Wide: PWBTB24**

Cantilever Brackets



- 8 4" Wide: PWBCB4**
- 6" Wide: PWBCB6**
- 8" Wide: PWBCB8**
- 12" Wide: PWBCB12**
- 18" Wide: PWBCB18**
- 24" Wide: PWBCB24**

Wall Mount Termination Brackets



- 9 Wide Wall Mount: PWBWMW**
- Narrow Wall Mount: PWBWMN**

Splice Connectors



- 10 50 PC Bolted Splice Kit: PWBSPL**
- 30 PC Expansion Splice: PWBFE**
- Splice: PWBPS**

** To be switched for BL- Black, EZ- Electro Zinc, WH- White

Tee Fittings



- 11 2" Sidewall: PWB2x12** (12" basket)
- 4" Sidewall: PWB4x12** (12" basket)
- 6" Sidewall: PWB6x12** (12" basket)

Waterfalls



- 12 Wide Waterfall: PWBWFW**
- 13 12" Waterfall: PWBDOK**
- Narrow Waterfall: PWBWFN**

Intersection Bend Radius Control



- 2" High Sidewall: PWBIB2**
- 14 4" High Sidewall: PWBIB4**
- 6" High Sidewall: PWBIB6**

Accessories



- 15 Spillout: PWBSPJ2BL, PWBSPJ4BL

Tray Liner



- 4" Tray Liner: PWBTL4BL (WH, PG)
- 6" Tray Liner: PWBTL6BL (WH, PG)
- 8" Tray Liner: PWBTL8BL (WH, PG)
- 12" Tray Liner: PWBTL12BL (WH, PG)
- 16 18" Tray Liner: PWBTL18BL (WH, PG)
- 24" Tray Liner: PWBTL24BL (WH, PG)

Divider Wall



- 17 2" Divider Wall: PWBDW2BL (WH, PG)
- 4" Divider Wall: PWBDW4BL (WH, PG)
- 6" Divider Wall: PWBDW6BL (WH, PG)

Wire Basket Overhead Cable Tray Routing System

how to order

1. Choosing the basket size

Part Number	Description
2" Basket	
PWB2x4**	Wire Basket 2"H x 4"W
PWB2x6**	Wire Basket 2"H x 6"W
PWB2x8**	Wire Basket 2"H x 8"W
PWB2x12**	Wire Basket 2"H x 12"W
PWB2x18**	Wire Basket 2"H x 18"W
PWB2x24**	Wire Basket 2"H x 24"W

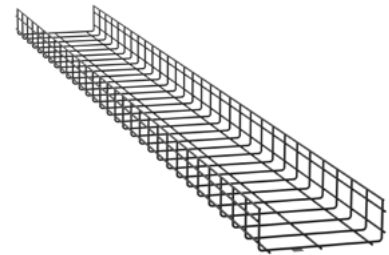
4" Basket

PWB4x4**	Wire Basket 4"H x 4"W
PWB4x6**	Wire Basket 4"H x 6"W
PWB4x8**	Wire Basket 4"H x 8"W
PWB4x12**	Wire Basket 4"H x 12"W
PWB4x18**	Wire Basket 4"H x 18"W
PWB4x24**	Wire Basket 4"H x 24"W

6" Basket

PWB6x6**	Wire Basket 6"H x 6"W
PWB6x8**	Wire Basket 6"H x 8"W
PWB6x12**	Wire Basket 6"H x 12"W
PWB6x18**	Wire Basket 6"H x 18"W
PWB6x24**	Wire Basket 6"H x 24"W

**Replace with BL- Black, EZ- Electro Zinc, and WH-White



2. Choosing a splice connection

Part Number	Description
Bolted Splice (50 Pieces)	
PWBSPLBL	Bolted Style Splice BL
PWBSPLEZ	Bolted Style Splice EZ
Push on Splice (50 Pieces)	
PWBPSEZ	Push-On Style Splice, EZ
PWBPSBL	Push-On Style Splice, BL
Expansion Splice (30 Pieces)	
PWBFES**	Expansion Splice Bar

**Replace with BL- Black, EZ- Electro Zinc, and WH-White

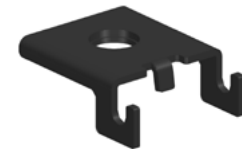
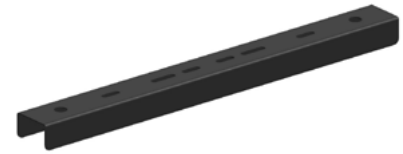


Wire Basket Overhead Cable Tray Routing System

how to order (continued)

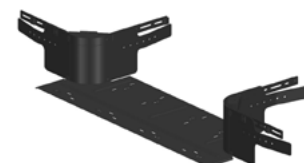
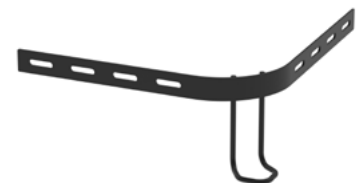
3. Choosing a Mounting Option

Part Number	Description
Trapeze Bracket (2 Pieces)	
PWBTB4**	Trapeze Bracket 4"
PWBTB6**	Trapeze Bracket 6"
PWBTB8**	Trapeze Bracket 8"
PWBTB12**	Trapeze Bracket 12"
PWBTB18**	Trapeze Bracket 18"
PWBTB24**	Trapeze Bracket 24"
Cantilever Bracket (2 Pieces)	
PWBCB4**	Cantilever Bracket 4"
PWBCB6**	Cantilever Bracket 6"
PWBCB8**	Cantilever Bracket 8"
PWBCB12**	Cantilever Bracket 12"
PWBCB18**	Cantilever Bracket 18"
PWBCB24**	Cantilever Bracket 24"
Vertical Wall Mount (2 Pieces)	
PBWBMBV**	Vertical Wall Mount Bracket
Termination Bracket (2 Pieces)	
PBWBMMN**	Narrow Wall Mount Termination Bracket (For 4" and 12" basket)
PBWBMMW**	Wide Wall Mount Termination Bracket (For 6",8",18" and 24" basket)
Strut (50 Pieces)	
PBWSCEZ	Strut Clip
Trapeze Hanging Clip (50 Pieces)	
PBWBTSBEZ	Trapeze Hanging Clip



4. Choosing an intersection

Part Number	Description
Radius Intersection (2 Pieces)	
PWBIB2**	Radius intersection 90 Brackets, 2" Height
PWBIB4**	Radius intersection 90 Brackets, 4" Height
PWBIB6**	Radius intersection 90 Brackets, 6" Height
Formed Tees	
PWBPF2Xx**	Formed Tee Fitting 2" Height x Basket Size
PWBPF4Xx**	Formed Tee Fitting 4" Height x Basket Size
PWBPF6Xx**	Formed Tee Fitting 6" Height x Basket Size



** Shall be replaced with BL = black, EZ= Electro Zinc, WH= White
 'x' -Shall be replaced with x= 4",6",8",12",18" and 24"
 "XX" - shall be replaced with BL=black, EZ= Electro Zinc , WH= White

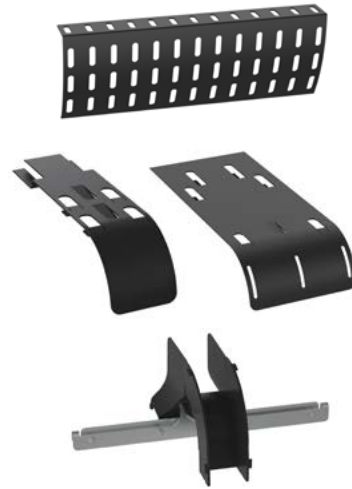
Wire Basket Overhead Cable Tray Routing System

how to order (continued)

5. Choosing a Waterfall

Part Number	Description
Drop Out Kit	
PWBDOK**	12" Drop Out Kit
Waterfall	
PWBWFN**	Narrow Bottom Waterfall
PWBFW**	Wide Waterfall
Spillover	
PWBSPJ2BL	Spillover Exit 2"
PWBSPJ4BL	Spillover Exit 4"

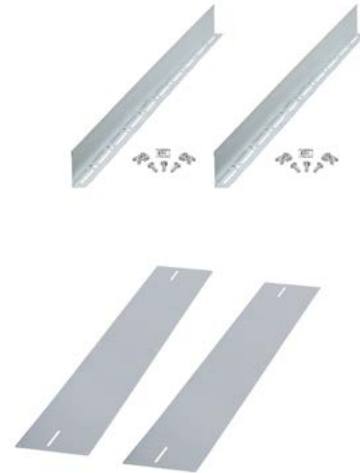
XX - shall be replaced with BL= Black, EZ= Electro Zinc, WH=White



6. Choose accessories

Part Number	Description
Divider Wall	
PWBW2**	Divider Wall 2" Height
PWBW4**	Divider Wall 4" Height
PWBW6**	Divider Wall 6" Height
Tray Liner	
PWBTL4**	Tray Liner 4" Wide
PWBTL6**	Tray Liner 6" Wide
PWBTL8**	Tray Liner 8" Wide
PWBTL12**	Tray Liner 12" Wide
PWBTL18**	Tray Liner 18" Wide
PWBTL24**	Tray Liner 24" Wide

**** - shall be replaced with BL=Black, PG= Pre-galvanized, WH= White

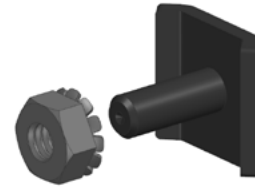


Wire Basket Overhead Cable Tray Routing System

how to order (continued)

7. Hardware

Part Number	Description
C-CLIP (50 Pieces)	To be used with Termination Brackets, Sweeps Cantilever, Trapeze, Radius Intersection and Cantilever
PWBHK**	Hardware Kit, Clip



WORLDWIDE SUBSIDIARIES AND SALES OFFICES

PANDUIT US/CANADA
Phone: 800.777.3300

PANDUIT EUROPE LTD.
London, UK
Phone: 44.20.8601.7200

PANDUIT SINGAPORE PTE. LTD.
Republic of Singapore
Phone: 65.6305.7575

PANDUIT JAPAN
Tokyo, Japan
Phone: 81.3.6863.6000

PANDUIT LATIN AMERICA
Guadalajara, Mexico
Phone: 52.33.3777.6000

PANDUIT AUSTRALIA PTY. LTD.
Victoria, Australia
Phone: 61.3.9794.9020

For a copy of Panduit product warranties, log on to www.panduit.com/warranty

PANDUIT[®]

For more information
Visit us at www.panduit.com
Contact Customer Service by email: cs@panduit.com
or by phone: 800.777.3300

© 2021 Panduit Corp.
ALL RIGHTS RESERVED.
FRSP33--WW-ENG
Replaces FRSP13--WW
11/2021