

5 Benefits of Having USB Ports on Your Rack PDUs



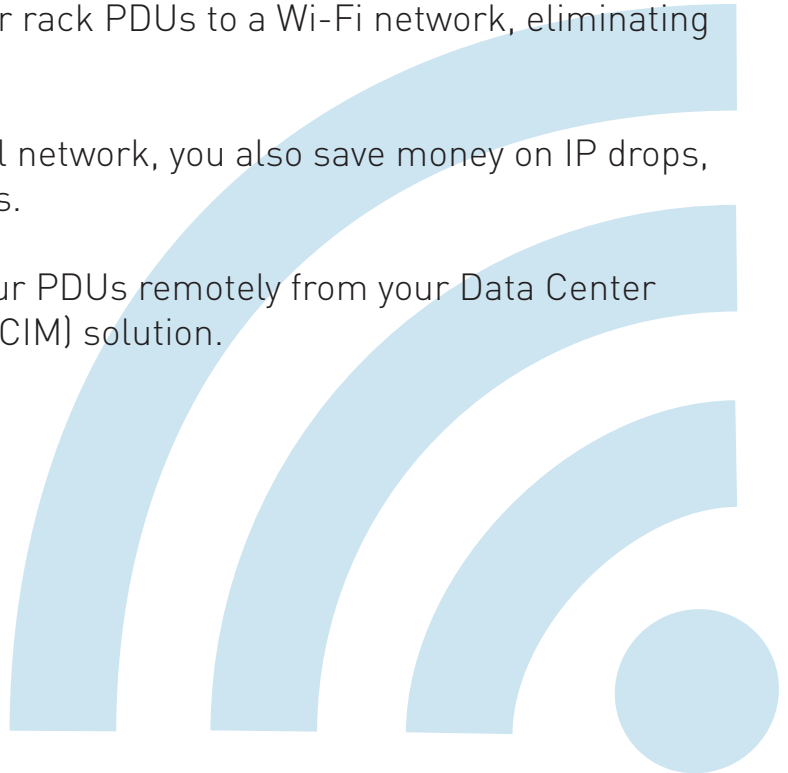
THE 5 REASONS

- 1 Connect Your PDUs to a Wi-Fi Network
- 2 Quick and Easy Setup and Upgrades
- 3 Cascade Multiple PDUs in a Rack
- 4 Secure Racks with USB Webcams
- 5 Turn your Tablet into a Remote Display

Reason 1.

Connect Your PDUs to a Wi-Fi Network

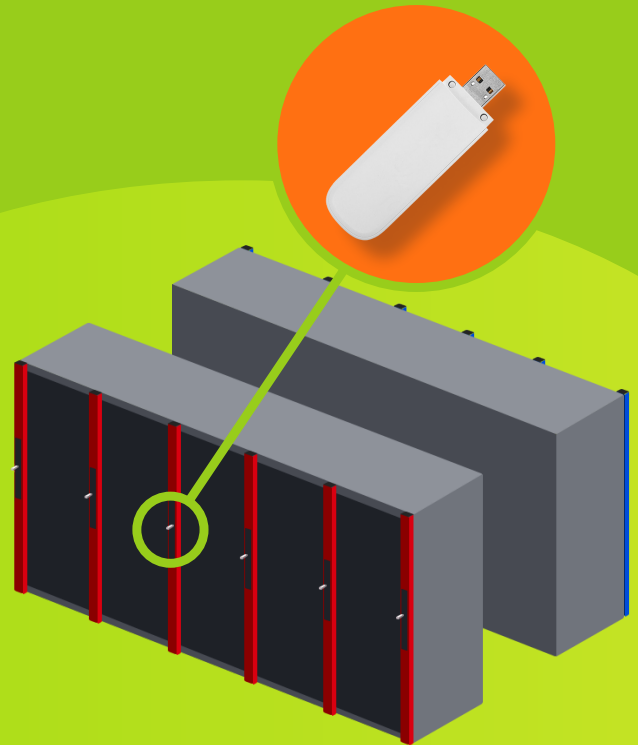
- USBs allow you to connect your rack PDUs to a Wi-Fi network, eliminating the expense of copper wiring.
- Since you don't need a physical network, you also save money on IP drops, Ethernet ports, and patch ports.
- Easily monitor and manage your PDUs remotely from your Data Center Infrastructure Management (DCIM) solution.



Reason 2.

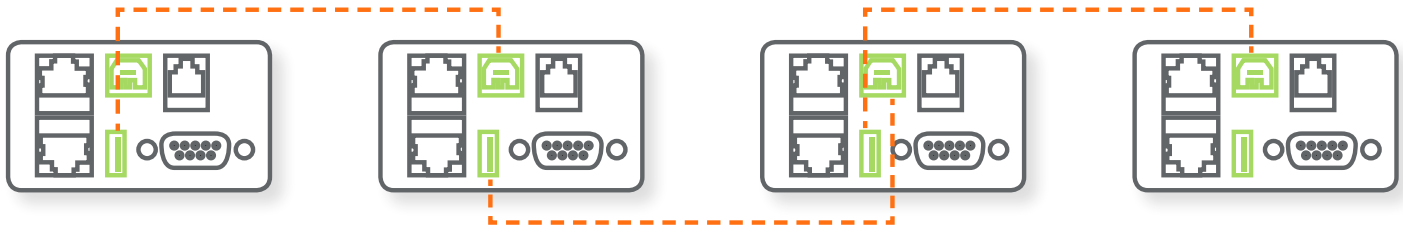
Quick and Easy Setup and Upgrades

- ➔ PDUs can be configured via USB flash drives in new data centers that don't have production ready network infrastructure.
- ➔ Preloaded USB Flash drives can be used to deploy and configure several rack PDUs at once; increasing your data center rollout speed.
- ➔ Firmware updates and configuration files can be delivered faster via multiple USB Flash drives vs. delivering updates programmatically via a single laptop.



Reason 3.

Cascade Multiple PDUs in a Rack

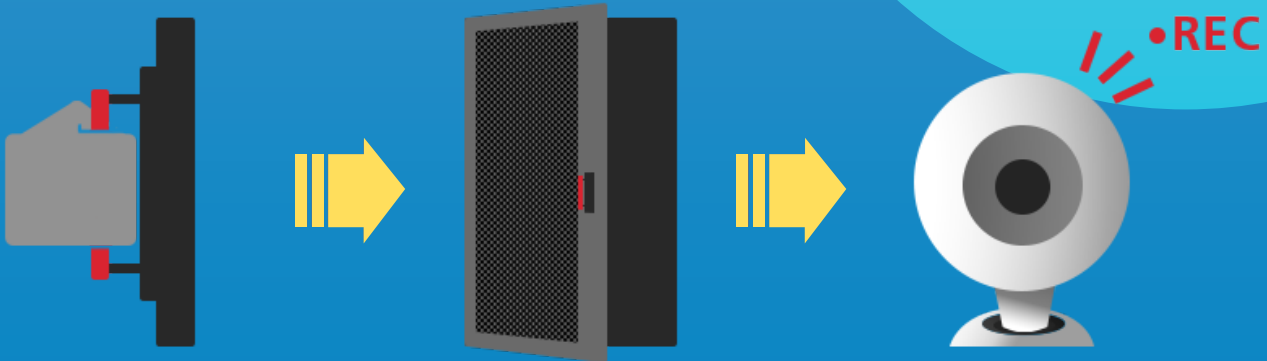


- ➡ USB PDU cascading allows you to connect multiple PDUs that can share networking connectivity.
- ➡ Another method of linking PDUs known as 'daisy chaining' requires master and slave PDUs; it increases complexity along with your spares inventory.
- ➡ Eliminates the need for a physical network and saves money on IP drops, Ethernet ports, and patch ports, making your data center a greener place.
- ➡ Even firmware can be upgraded through this "USB subnetwork."

Reason 4.

Secure Racks with USB Webcams

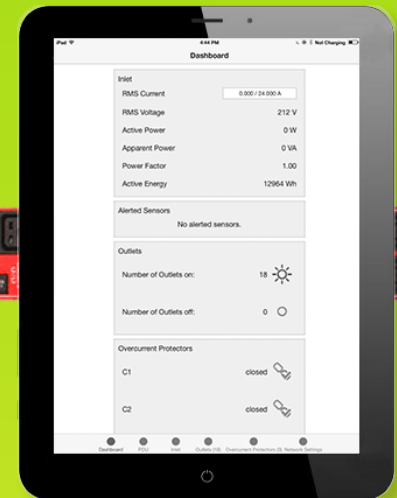
- USB ports that supply at least 500ma can power webcams that snap photos or stream video to a user when a rack door is opened.
- Webcams add a layer of physical security to your data center and help you identify erroneous device changes.







Reason 5.

Turn Your Tablet into a Remote Display

- Connect a tablet directly to the rack PDU via USB to view real-time power and environmental data, and even control outlets.
- Plug your device directly into the port via a USB cable without the need for an additional adapter.



So Much from a Simple Port

-  Eliminate the need for IP drops, Ethernet ports, patch ports, and copper wiring.
-  Reduce the number of man-hours needed to deploy and upgrade rack power distribution units.
-  Power and transfer data to and from small devices like webcams and Wi-Fi devices.
-  Easily connect to peripheral devices such as tablets for remote display and control.

Why Choose Raritan PDUs with USB Ports?

- Over 600 unique intelligent PDU models with single or three phase voltage, individual outlet level power metering, environmental monitoring, and support for high powered devices.
- Fully functional USB-A and USB-B ports. The USB-A port provides 500mA of power – enough for webcams, Wi-Fi antenna and other small devices.
- Raritan PDUs use USB 2.0, which is employed by virtually every popular device currently on the market.
- Cascading does NOT require a Slave PDU that is dependent on a Master PDU, so all PDUs continue to work even if another fails.
- When cascading, each PDU can retain a unique IP address, or the IP address or only the “master”, for firmware updates and configuration changes. Not so with daisy chaining.
- The greatest degree of customization on the market with PDUs that can be fully engineered to order (ETO) and created to fit perfectly in your data center.



How some of our customers use the iPDU USB



Uses USB for
Wi-Fi Networking



Uses USB for
Cascading



Uses USB for
Cascading



Uses USB for
USB Configuration



Uses USB for
Cascading

Next Steps:



Contact Us

Learn more from a product specialist.
(800) 724-8090



Explore

Discover more Intelligent
Rack PDU features.



Test Drive

Take a self-guided test drive
of one of our iPDU's.