

CAT 6A+ U/UTP

PREMIUM COPPER CABLING SYSTEM

CAT 6A+ U/UTP

This nCompass™ copper solution combines Superior Essex **10Gain® XP+** U/UTP cabling and Ortronics® Clarity® 6A connectivity to offer improved channel performance that exceeds industry standards. With this system, Alien Crosstalk (AXT) is negated, and the channel provides guaranteed 4 dB margin over AXT performance requirements. The system also provides bandwidth beyond TIA frequency specifications. **10Gain XP+** cables have a nominal 0.25 inch diameter which allows for higher cable density than other CAT 6A cable products. Together, the system offers the greatest mitigation of noise for better performance and a smaller cable for ease of installation for current 1G and future 10G needs. This solution complies to IEEE 802.3 standards to support Type 1 through Type 4 PoE applications.

SYSTEM BENEFITS

- 4 dB margin over Alien Crosstalk performance requirements in ANSI/TIA-568.2 and ISO/IEC 11801 Class Ea
- Superior Essex cable provides AXT suppression and industry-leading PSACR channel margins
- Ortronics® Clarity® connectivity is center tuned, ensuring the greatest possible mitigation of noise; improves the overall performance of the channel
- Backed by a Limited Lifetime Warranty
- Complies to IEEE 802.3 Type 1 through Type 4 PoE applications

CHANNEL MARGIN GUARANTEES

Parameter	Margin vs. TIA-568.2
Insertion Loss	3%
NEXT	4 dB
PSNEXT	5 dB
Return Loss	3 dB
ACRF	5 dB
PSACRF	6 dB
PSANEXT	4 dB
PSAACRF	4 dB
ACR	4 dB
PSACR	5 dB

NOTE: Margins supported over standards-compliant channels from 7 to 100 meters

CAT 6A+ U/UTP

PREMIUM COPPER CABLING SYSTEM



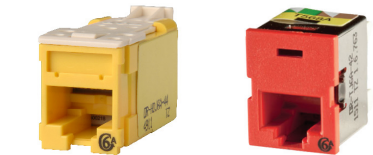
LEGRAND

CLARITY® CAT 6A U/UTP MODULAR JACKS

Description	Part Number
Clarity® Cat 6A High Density T568A/B Lacing Cap Jack	HDJ6A**

TJ6A is also approved for use in the shielded channel. Legrand recommends HDJ rear loading jack when using larger cables.
 *Note: Standard HDJ color is Fog White, requiring no tail code. For other colors, add tail code to end of manufacturer part number from chart below.

-00	-27	-36	-42	-43	-44	-45	-68	-88	-99
-----	-----	-----	-----	-----	-----	-----	-----	-----	-----



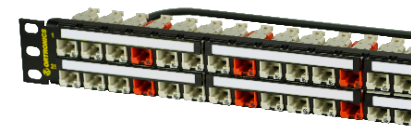
HDJ6A-44

TJ6A-42

FREQUENTLY PURCHASED WITH CLARITY® HDJ JACKS

Patch Panels	Part Number
HDJ High Density Unloaded Patch Panel, 1RU	PHxHJUyy*
HDJ Standard Density Unloaded Patch Panel, 2RU	PSxHJUyy*

x = A for angled, D for flat
 yy = Ports: 1RU (24), (48); 2RU (48), (72)
 *Standard color is Black, add -W for White



PHDHJU48

Workstation	Part Number
HDJ Single-Gang Faceplate	403HDJyy*

yy = 1 Port: (11), 2 Port: (12), 3 Port: (13), 4 Port: (14), 6 Port: (16)
 *Standard color is Fog White. Add (-88) for White, (-00) for Black or (-78) for Gray

HDJ Plastic Surface Mount Box	404HDJy*
-------------------------------	----------

y = Ports: (1), (2), (4)
 *Standard color is Fog White, add (-88) for White

Icons	Part Number
Colored Icon Insert, 25-Pack	PRTICON-xx*

*Standard color is Fog White, requiring no tail code. Replace XX with the color suffix shown chart below.

-00	-13	-27	-36	-42	-43	-44	-45	-68	-88	-99
-----	-----	-----	-----	-----	-----	-----	-----	-----	-----	-----

CLARITY® CAT 6A U/UTP PATCH PANELS

Description	24-Port	48-Port
HDJ High Density Loaded Angled Patch Panel T568A/B	PHA6AU24*	PHA6AU48*
HDJ High Density Loaded Flat Patch Panel T568A/B	PHD6AU24*	PHD6AU48*

*Standard color is Black, add -W for White

-00	-02	-03	-04	-05	-06	-07	-08	-09	-11
-----	-----	-----	-----	-----	-----	-----	-----	-----	-----



PHD6AU24

CLARITY® CAT 6A U/UTP PATCH CORDS

Description	Part Number
Clarity® Cat 6A 4 Pair U/UTP Patch Cord	MC6Ayy-xx

yy = Length: (01), (02), (03), (04), (05), (06), (07), (08), (09), (10), (11), (12), (13), (14), (15), (20) or (25) feet.
 xx = Patch Cord Color: choose from the colors below.

-00	-02	-03	-04	-05	-06	-07	-08	-09	-11
-----	-----	-----	-----	-----	-----	-----	-----	-----	-----



MC6A06-06

CAT 6A+ U/UTP

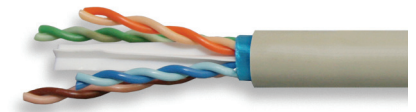
PREMIUM COPPER CABLING SYSTEM



SUPERIOR ESSEX

10GAIN® XP+ CAT 6A U/UTP CABLE

Listing	Part Number	Nom. Diameter in (mm)	Approx. Weight lb/kft (kg/km)	Package
CMR	6B-246-xA	0.275 (6.99)	31 (47)	1,000' BrakeBox®
CMR	6B-272-xA	0.275 (6.99)	31 (47)	1,000' reel
CMP	6B-246-xB	0.25 (6.35)	34 (50)	1,000' BrakeBox®
CMP	6B-272-xB	0.25 (6.35)	34 (50)	1,000' reel



x = Jacket Color. Choose from the colors below.



*Superior Essex copper cables provide EPDs, HPDs and Multi-Attribute Labels.

All information, content, data, specifications, packaging and part numbers detailed herein are subject to change. For the most up to date information, please visit www.ncompass-systems.com.