

# PoE Watchdog Maximizes Efficiency in IDS-100HP PoE Switches

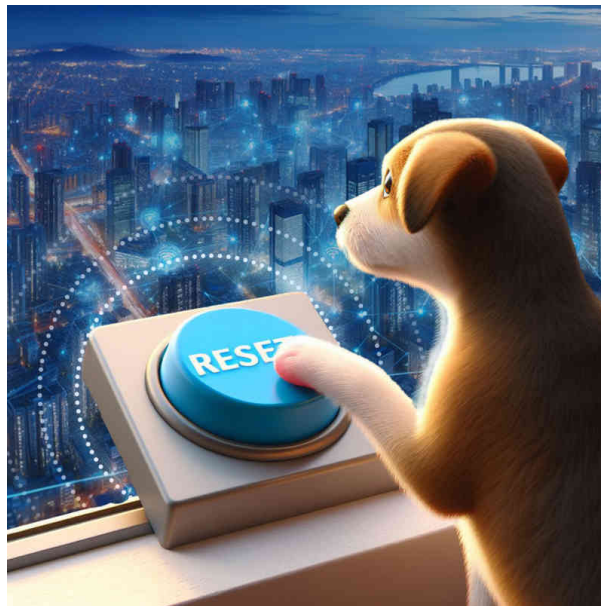
***Monitor and remotely reset PoE devices, like security cameras, with the PoE Watchdog function***

Efficiency, reliability, and cost-effectiveness are critical factors for companies seeking an optimal Power over Ethernet (PoE) device management solution. Unmanaged PoE switches traditionally offer plug-and-play simplicity, making them popular among small to mid-sized businesses. However, the lack of advanced management features has limited their potential. Thanks to innovative engineering, IDS-100HP unmanaged PoE switches are equipped with the PoE Watchdog function, delivering enhanced control and monitoring capabilities without compromising affordability. This article explores the benefits and implementation of PoE Watchdog while offering step-by-step instructions for configuring this feature on your IDS-100HP PoE switch.

## Understanding PoE Watchdog

PoE Watchdog is a powerful function that enables digital monitoring of connected PoE devices, including IP cameras, through routine checkups. By intermittently sending and receiving data packets, commonly known as pinging, the PoE Watchdog function verifies the working status of each connected PoE device.

The primary objective of PoE Watchdog is to ensure the uninterrupted performance of PoE devices. By systematically assessing the health of these devices, users can proactively identify and address potential issues before they disrupt critical operations. In addition, PoE Watchdog allows for effective troubleshooting by pinpointing the specific device that requires attention.



## Remote Reset Function

One particularly valuable feature of PoE Watchdog is its ability to reset PoE devices remotely. When the DIP switch for a port is set to ON, the Watchdog function will automatically reset PoE devices , eliminating the need for manual intervention.

This remote reset function saves users considerable time and effort, enabling them to avoid the cumbersome task of individually resetting each PoE device. Users can effortlessly perform device resets on multiple PoE devices simultaneously, enhancing efficiency and reducing downtime.

Traditionally, companies have turned to managed PoE switches to unlock this type of advanced feature. With an extensive array of features and more complex configuration options, managed switches come at a higher price point, making them less accessible for budget-conscious businesses. The PoE Watchdog functionality on IDS-100HP unmanaged PoE switches fuses affordability with advanced features to provide a cost-effective alternative to expensive managed switches. Implementing PoE Watchdog on your PoE switch enables you to maximize the potential of your PoE devices, ensuring a smooth and reliable workflow. With its simple DIP switch settings, this feature simplifies PoE device management and enhances overall efficiency. Embrace the power of PoE Watchdog and take your PoE system management to the next level.

## Perle IDS-100HP PoE Switches that Support PoE WatchDog

### IDS-108HP PoE (90W) Switches



- 8 x 10/100/1000 RJ45 Ethernet Ports
- 8 PoE ports supply up to 90 Watts PSE power
- Remotely detect and reboot unresponsive equipment
- QoS (Quality of Service) prioritized messages
- Resistance to vibrations and shocks

### IDS-110HP PoE (90W) Switches



- 2 x SFP slots supporting 100/1000Mbps Fiber
- 8 x 10/100/1000 RJ45 Ethernet Ports
- 8 PoE ports supply up to 90 Watts PSE power
- Remotely detect and reboot unresponsive equipment
- QoS (Quality of Service) prioritized messages
- Resistance to vibrations and shocks



## **IDS-114HP PoE (90W) Switches**

- 2 x SFP slots supporting 100/1000Mbps Fiber
- 4 x 10/100/1000 RJ45 Ethernet Ports
- 4 x 10/100/1000 PoE ports supply up to 90 Watts PSE power
- Remotely detect and reboot unresponsive equipment
- QoS (Quality of Service) prioritized messages
- Resistance to vibrations and shocks