



Smart Link Mapper OTDR Applications

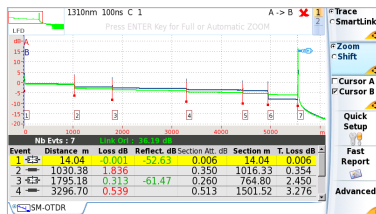
Turn any technician into an OTDR expert!

Smart Link Mapper (SLM) applications let any technician use an OTDR to optimize fiber networks for enduring performance!

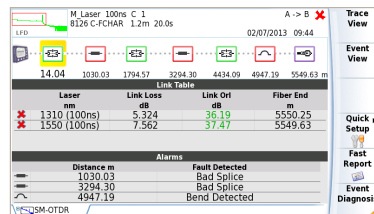
Four applications for T-BERD®/MTS OTDR platforms are available:

- SLM displays OTDR results in a simple, icon-based map view (SmartLink), providing a clear diagnostic of detected issues
- FTTA-SLM adds a fiber-to-the-antenna user interface and a specific algorithm for OTDR measurements in cell tower/rooftop environments
- FTTH-SLM adds a fiber-to-the-home interface and a specific algorithm for measurements through PON splitters
- CABLE-SLM provides a high-level view when commissioning optical fiber cables

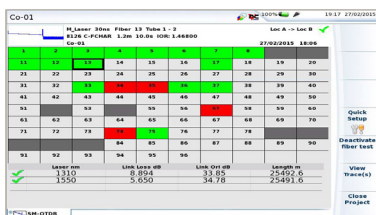
SLM applications are compatible with any point-to-point or point-to-multipoint network.



OTDR Trace view



SLM view



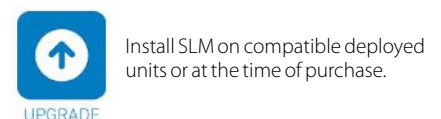
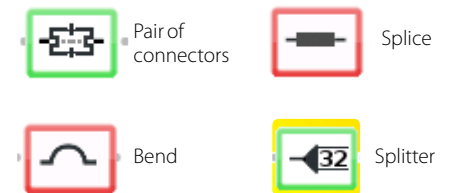
Cable view

Benefits

- Makes OTDR result interpretation quick and easy
- Immediately provides a clear diagnostic when a bad link element is detected
- Speeds testing time and improves reliability
- Reduces truck rolls, re-testing, and cable waste

Key Features

- Directly correlates SLM view results and OTDR traces
- Automatic pass/fail analysis
- Compatible with multimode and single-mode OTDR modules
- Available for all recent T-BERD/MTS-2000, -4000, -6000A OTDR platforms



Smart Link Mapper OTDR Applications

Turn any technician into an OTDR expert!

Enterprise/Access/Metro/Long and Very Long Haul

- Icon-based map view of OTDR links and events
- Essential summary table with Pass/Fail analysis
- Detection, identification, and clear diagnostics of issues

FTTA (cell tower/rooftop/DAS)

Includes all SLM features and benefits plus:

- Dedicated FTTA setup menus
- Auto selection of best acquisition parameters
- OTDR signal analysis based on FTTA applications
- Detection and identification of FTTA network elements along the fiber link

FTTH (point-to-point/ point-to-multipoint)

Includes all SLM features and benefits plus:

- Dedicated FTTH setup menus
- Discover mode: auto-detection and identification of PON splitter types
- OptiPulses: auto measurement with short and long pulsewidths to detect all events before and after the splitter(s)
- Pass/fail thresholds per ITU-T/IEEE PON standards

Multi-Fiber Testing and High-Count Cable Commissioning

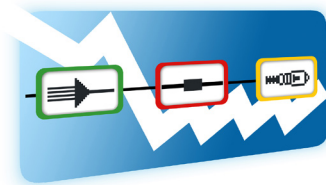
- Complete view for cable commissioning
- Manage testing with pre-configured setup
- Automation and consistency in managing an entire cable's commissioning
- Optimized workflow, from testing against expected procedures to direct reporting

Ordering Information

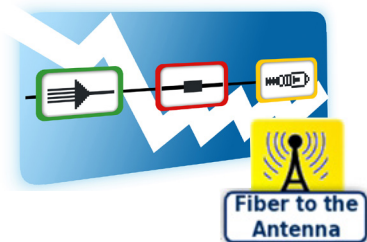
Application	Part Number	Application	Part Number
SLM	ESMARTLINK-xK	FTTA-SLM	ESMARTFTTA-xK
SLM upgrade	ESMARTLINKxKUPG	FTTA-SLM upgrade	ESMARTFTTAxKUPG
FTTH-SLM	ESMARTFTTH-xK	CABLE-SLM	ESMARTCABLE-xK
FTTH-SLM upgrade	ESMARTFTTHxKUPG	CABLE-SLM upgrade	ESMARTCABLExKUPG

In the part numbers, x=2 for T-BERD/MTS-2000; x=4 for T-BERD/MTS-4000; x=6 for T-BERD/MTS-6000 (with s/n >10,000)/-6000A.

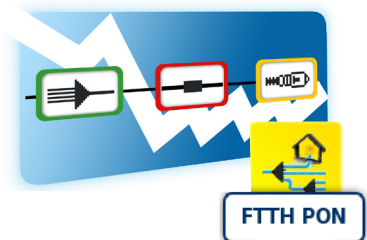
SLM



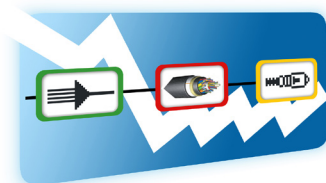
FTTA-SLM



FTTH-SLM



CABLE-SLM



North America
Latin America
Asia Pacific
EMEA

Toll Free: 1 855 ASK-JDSU
 Tel: +1 954 688 5660
 Tel: +1 800 223 7070
 Tel: +49 7121 86 2222

(1 855 275-5378)
 Fax: +1 954 345 4668
 Fax: +65 6602 8301
 Fax: +49 7121 86 1222