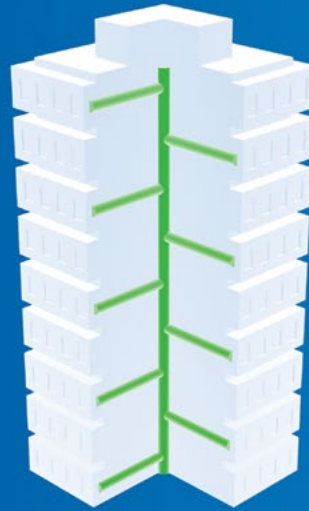


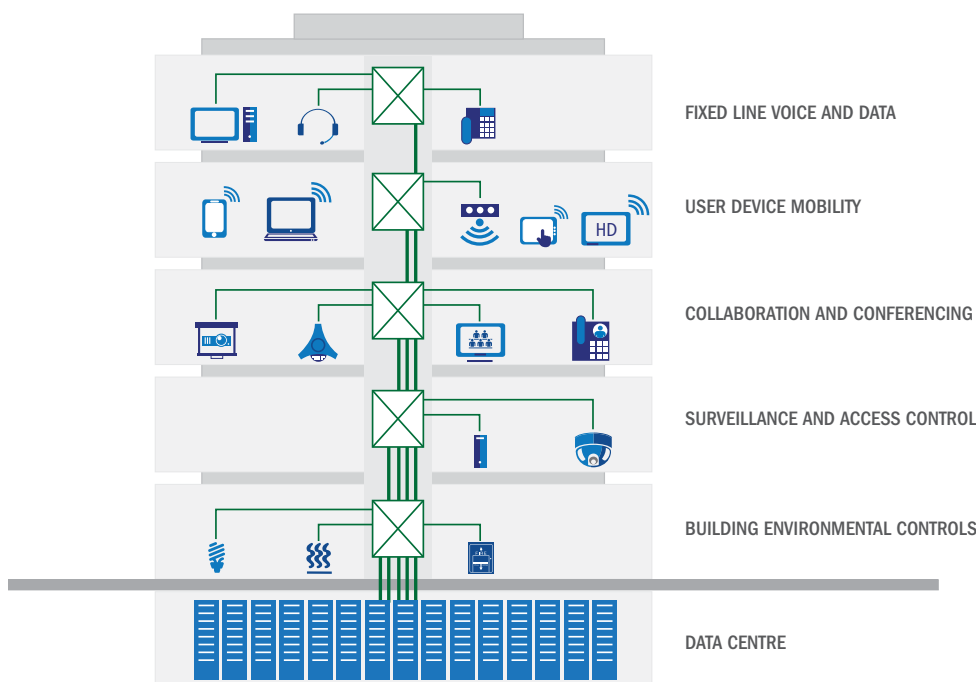
Does your network keep up with the demands of the modern workforce?



COMMERCIAL BUILDING NETWORK PERFORMANCE

More than ever before, a high-performance structured cabling system plays an essential role in operating a smart building. Versatile physical layer connectivity guides the creation of an open system platform, where the right media selection and cabling topology will increase your productivity.

A SMART BUILDING APPROACH



WHAT WE HEAR

Challenges from the various commercial building stakeholders are:



Keeping up with **EVOLVING TECHNOLOGIES**



AMORTISATION of cabling systems



Supporting multiple **APPLICATIONS**



Reducing network **DOWNTIME**



Coping with **INCREASING BANDWIDTH**

INTERNET OF THINGS

By 2020, **26 billion devices** will be connected to the Internet, adding **\$1.9 trillion** in global economic value through sales into diverse end markets.

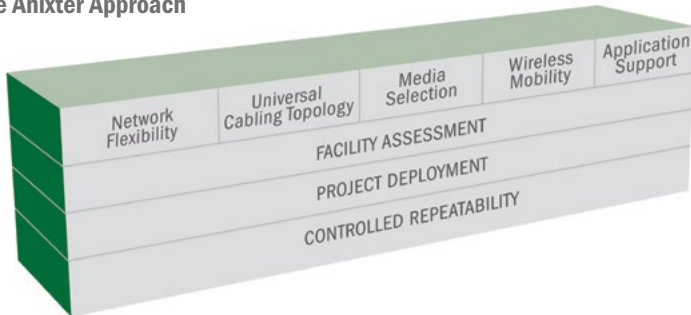
Source: Forbes. G. Press, Internet of Things By The Numbers: Market Estimates and Forecasts. 2015.

Infrastructure as a Platform
by Anixter

Infrastructure as a Platform by Anixter offers a standards-based, physical layer approach that provides a foundation to meet the high-performance networking demands of your commercial building.

VERSATILE PHYSICAL LAYER CONNECTIVITY

The Anixter Approach

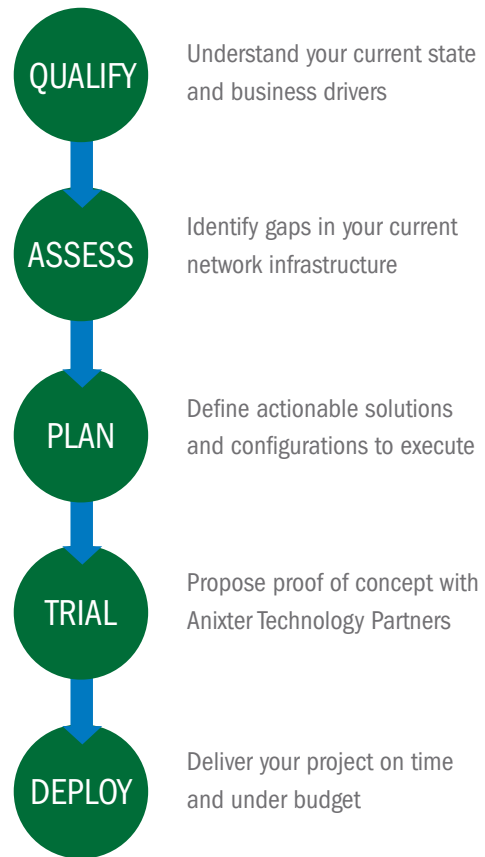


Anixter understands that in order to achieve a high-performance, future-ready structured cabling system, you need to consider the right combination of network architecture, performance, distance and density requirements.

- Network Flexibility**
 Apply open architecture designs to accommodate your performance requirements for a highly scalable network.
- Universal Cabling Topology**
 Determine the right choice for an open architecture environment by adopting commercial building wiring and building automation standards.
- Media Selection**
 Choose the appropriate physical media from twisted-pair, optical fibre and direct-attach cables to address high-speed bandwidth requirements.
- Wireless Mobility**
 Determine your migration path for Wi-Fi and in-building cellular connectivity to support a multi-screen environment.
- Application Support**
 Deploy scalable designs that can support multiple and varied applications over a high-performance, IP-based structured cabling system.

YOUR CONNECTIVITY PLATFORM

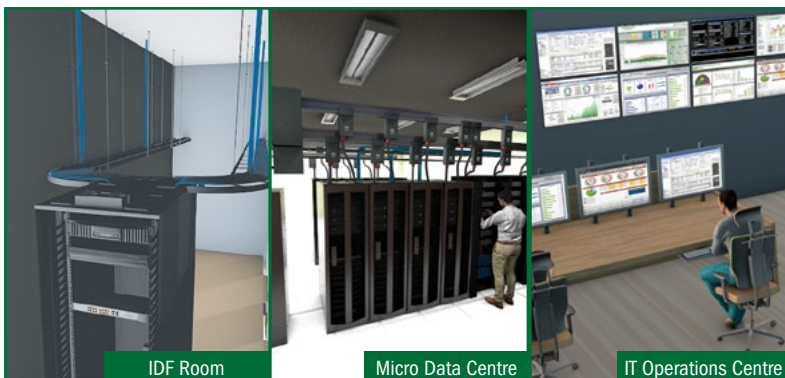
Anixter Engagement Process



You can further strengthen your protective measures and enable interoperability by leveraging our expertise in technology sourcing, inventory management, product enhancement, logistics and eCommerce tools.

PRODUCT SOLUTIONS

- Copper and fibre cabling infrastructure
- Vertical and horizontal cable management
- Copper and fibre patch panels
- Copper work area outlets
- Zone wiring and consolidation points
- Copper and fibre patch cords
- Preterminated fibre trunk cables
- Infrastructure certification testing equipment



FOR MORE INFORMATION VISIT ANIXTER.COM/COMMERCIALBUILDING-APAC

At Anixter, we enable the connected world. By building, connecting, protecting and powering valuable assets and critical infrastructures, we help to sustain and grow businesses and communities worldwide. We accomplish this by offering full-line solutions, technical intelligence, supply chain expertise and an unmatched global distribution network.