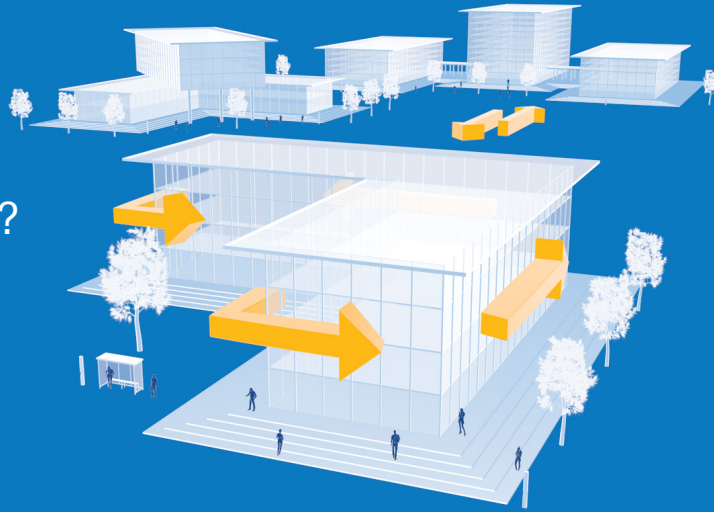


Is your campus ready for the benefits of an IoT environment?



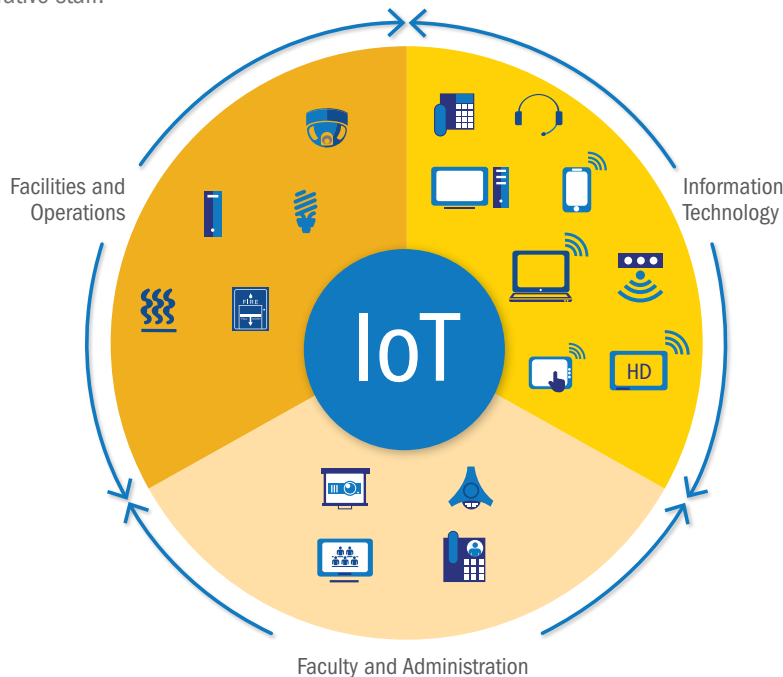
## HIGHER EDUCATION CIoT ENABLEMENT

Enabling the Campus Internet of Things (CIoT) allows you to analyze your environment and make real-time adjustments to improve productivity and efficiency.

In order to take advantage of the potential of IoT, facility owners and operators must often address the lack of interoperability and integration between existing infrastructure management tools and IT systems.

### FAMILIAR CHALLENGE: OPERATING IN SILOS

Infrastructure management systems between facilities and IT can operate in silos, whereby functions overlap but don't talk to each other, resulting in poor workflow practices. Higher education presents added complexity to this challenge, with additional key stakeholders, including faculty and administrative staff.



### WHAT WE HEAR

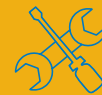
Challenges from the various higher education stakeholders are:



Facilities vs. IT **OWNERSHIP**



Supplier **INTEGRATION** competency



Maintaining university **INFRASTRUCTURE STANDARDS**



Justifying the cost of **EFFICIENCY**



Limitations of **EXISTING INFRASTRUCTURE**

**Infrastructure as a Platform**  
by Anixter



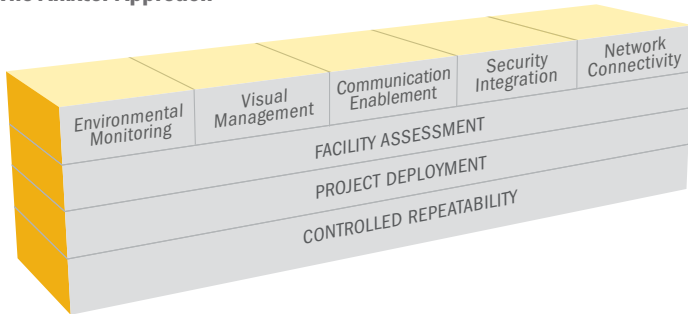
Students are arriving on campus with an average of **7 unique IoT devices.**

Source: Educause Review, The Internet of Things Is Here. 2016.

Infrastructure as a Platform by Anixter provides a comprehensive approach to maximizing the potential of a more integrated campus, which starts at the physical layers.

## THE FIVE SENSES OF A CONVERGED CAMPUS

### The Anixter Approach

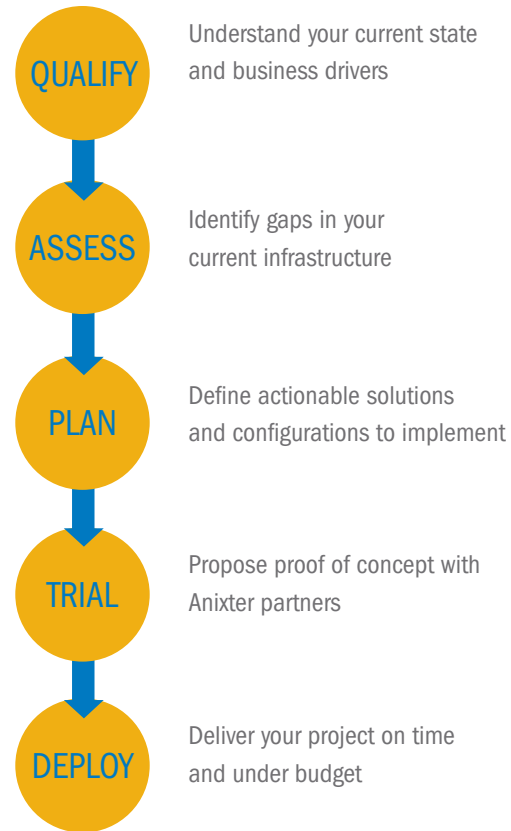


By defining the various elements that provide valuable information about your building, Anixter will tailor a solution that meets your specific challenges.

- Environmental Monitoring**  
 Use occupancy, intelligent lighting, power and temperature sensor technology to achieve optimal comfort and energy efficiency.
- Visual Management**  
 Support centralized management of content through integration of digital signage, projection technology and mobile devices.
- Communication Enablement**  
 Adopt a flexible wired and wireless network architecture to integrate voice, data and video experience.
- Security Integration**  
 Manage cyber concerns and create interoperability between video surveillance, access control and intrusion detection systems, intrusion detection, lighting, HVAC and other campus systems.
- Network Connectivity**  
 Provide a standards-based IP platform that can run multiple applications, and be remotely managed and measured.

## YOUR IoT ENABLEMENT PLATFORM

### Anixter Engagement Process



You can further enable interoperability by leveraging our expertise in technology sourcing, inventory management, product enhancement, logistics and e-commerce tools.

## PRODUCT SOLUTIONS

- Intelligent PDUs
- Inline power meters
- Asset collection services and software
- Intelligent patch panels
- Temperature and humidity sensors
- Power and thermal management software
- Video management software
- Video analytics
- Access control software
- Intelligent patching
- Intelligent LED lighting
- Occupancy sensors
- Eco-mode UPS
- Network cabling
- Network analysis tools
- Network management software
- Wireless: Wi-Fi and Distributed Antenna Systems (DAS)



FOR MORE INFORMATION VISIT [ANIXTER.COM/EDUCATION](https://www.anixter.com/education)

At Anixter, we enable the connected world. By building, connecting, protecting and powering valuable assets and critical infrastructures, we help to sustain and grow businesses and communities worldwide. We accomplish this by offering full-line solutions, technical intelligence, supply chain expertise and an unmatched global distribution network.