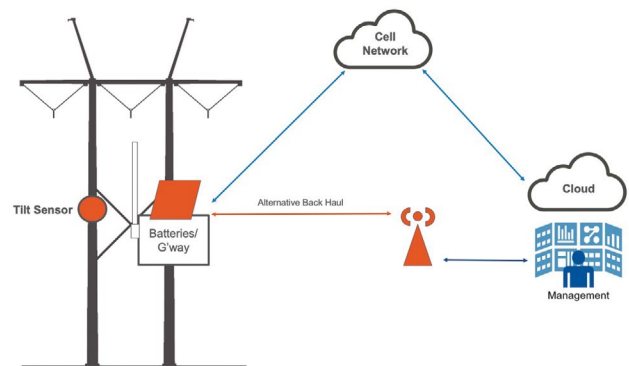


TRANSMISSION TOWER TILT SENSOR SOLUTION

When a transmission tower or utility pole goes down, every minute counts. Anixter's tilt sensor solution provides real-time alerts when a pole or tower is leaning or has fallen, including geolocation, so you can quickly begin the repair process and keep customers satisfied. The solution consists of a sensor for each pole or tower, wireless gateways with a cellular back-haul connection and a cloud-based dashboard application for monitoring sensor location, battery and tilt status.

Key Benefits:

- Designed to function in wet and windy conditions
- Can operate with a private or carrier network
- Uses LPWAN protocol, which enables a sensor battery lifetime of 5+ years
- Additional weather, water and temperature sensors can be added at any time



Dashboard

The cloud-based dashboard application monitors all tilt sensors and can alert you in real time when there is an issue.

- **Full software solution** – software-as-a-service dashboard and toolset for monitoring, alerts and analytics
- **Network health** – monitor network health to confirm all systems are operating efficiently
- **Manage data and create alerts** – delivers real-time geolocated email/SMS alerts
- **Reports and analytics** – management dashboard stores historical data and creates custom reports



Tilt Sensor

The easy-to-install sensor integrates remote monitoring status updates and real-time alerts. Track pole tilt over time, or when the pole tilt exceeds its threshold, the sensor activates and initiates an alert that is sent as a text message and/or email. A real-time, geolocated alert helps save time and maintenance costs with automated data collection. Additional water, weather and temperature sensors can be added at any time.

Specifications:

- Dimensions: 4.5 x 2.5 x 1.6 in.
- Weight: 125 grams
- Supply voltage: 6VDC
- Battery type: 3000 mAh
- Power consumption/battery life: 5.9 years
- Operating temperature range: -40°F to 176°F
- Operating frequency: 915 MHz
- Sensitivity/accuracy: 0.1° between 0-180°
- Enclosure: IP67
- Installation/attachment: Wood screw/metal clamp/magnet
- Antenna: Internal
- Security: 128 AES

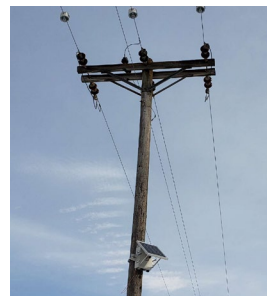


Gateway

The low-cost, scalable gateway provides networking to connect each sensor to the dashboard application. To facilitate rapid deployment, it is extremely compact and lightweight. With both the cellular modem and GPS antennas embedded internally, the gateway is ideal for network sites that require a small form factor and low power consumption. Rated IP67, it is designed for the most demanding outdoor installations.

Specifications:

- Operation voltage: 37-57VDC
- No damage voltage: +/- 60VDC
- Shutdown threshold: 32V typical, 30V minimum
- Start-up threshold: 36V typical, 37V max
- Power consumption: 1.5W typical, 25W max (approximately .3 Amps)
- Ground reference: positive or negative
- Power: PoE 802.3at or -48VDC (Type 2)
- With one battery, estimated at 9-hour backup time
- Dimensions: 5.67 x 11.1 x 3.62 in.
- DC power consumption: < 20 W
- Operating temperature: -40°C to 60°C
- Frequency duplex: 16 Rx/2 Tx (NA)
- Time duplex: 16 Rx/2 Tx (Int.)
- Tx power: 27 dBm
- Enclosure: Hard-ended carrier grade
- Antenna: Integrated GPS and 3G/4G
- Backhaul connectivity: ETH/3G/4G
- Input/output ports: DI, DO, AI, AO, RS-232, Wi-Fi, Bluetooth, USB2, USB3, fiber



Anixter's Technology Support Services team has the experience and solutions to help you meet your IoT goals.

Visit anixter.com/utilities for more information on Anixter's Utility Power Solutions or visit anixter.com/contact to get in touch with one of our Utility Power Solutions experts.

About Anixter: anixter.com/aboutus
Legal Statement: anixter.com/legalstatement

Anixter Inc. World Headquarters
 2301 Patriot Boulevard
 Glenview, Illinois 60026
 224.521.8000

20D0167NA © 2020 Anixter Inc.

1.800.ANIXTER | anixter.com

