



MINING SOLUTIONS

AGGREGATE | OPEN PIT | SHAFT | SUBSURFACE



THE ANIXTER DIFFERENCE

At Anixter, we help build, connect, power and protect valuable assets and critical infrastructures. From enterprise networks to industrial support and supplies to video surveillance applications and electric power transmission and distribution, we offer full-line solutions—and intelligence—that create reliable, resilient systems that can sustain your business and community. Through our unmatched global distribution network, supply chain management expertise and technical know-how, we drive efficiency and effectiveness to benefit your bottom line.

STAYING PROFITABLE

Keeping competitive and profitable in the volatile global mining industry requires companies to invest, build, upgrade and develop advanced capabilities. However, with historically low commodity prices, falling demand, declining grades, ever changing regulatory issues and increased physical and cybersecurity threats, implementing strategies to do more with less can seem challenging.

HOW WE CAN HELP

Whether you are reducing costs through operational excellence by optimizing your supply chain, increasing productivity or working capital efficiencies or you are advancing your safety practices and security strategies, Anixter can support you in many areas.

THREE PRIMARY DIFFERENTIATORS

- Technical expertise
- Cost-saving customized Supply Chain Solutions
- Global platform with local implementation

OUR SOLUTIONS HELP OUR CUSTOMERS

- Reduce costs
- Increase efficiencies
- Mitigate risk
- Improve quality
- Fulfill regulatory and sustainability requirements
- Gain financial leverage.



MINING CABLE

Demands for reliability combined with increasing safety standards make cable selection critical to mining performance. In open pit, shaft and subsurface applications, the reliable and safe powering of machinery is essential for continuous operations.

With the world's largest and broadest inventory of wire, cable and related products, we can help you meet the unique requirements of various mining applications.

- Longwall systems
- Mine power feeder
- Conveyors
- Pumps
- Shuttle cars
- Continuous mining
- Boreholes
- Shovel and dragline
- Shafts

COSTS ASSOCIATED WITH SPECIALTY WIRE AND CABLE

Specialty wire and cable is a highly engineered product with varied specifications based on unique applications, and as specialty products, they can be expensive and associated costs can mount due to limited inventory availability, long lead times and minimum order quantities. Although wire and cable is typically a small percentage of a project's bill of materials, it can represent a high percentage of cost.

Costs associated with specialty wire and cable:

- Expedited freight
- Scrap lengths due to minimum order quantities, cutting off the wrong reel, etc.
- Copper fluctuation
- Damaged, incorrect product
- Low inventory turns
- Unproductive labor in locating and handling material
- Safety

INCREASED EFFICIENCY AND REDUCED COSTS

As a world class specialist with over \$1 billion in inventory, innovative technical and engineering expertise and customized supply chain solutions Anixter is uniquely positioned to take cost and complexity out of our customers' product selection, sourcing and business processes. The result is capital efficiency, safety and compliance, risk mitigation and overall operational excellence.

- Inventory availability
- Cut to length
- Copper management
- Problem resolution
- Inventory buy-back or return programs
- Material management



ANIXTER TRAKR

Anixter Trakr™ is a tracking and inventory management tool that works by combining three technologies: GPS (GeoStamp), Bluetooth and data cloud storage. This solution provides users with greater visibility to intelligently manage their cable reel yards for greater efficiencies.

Anixter Trakr offers users several benefits:

- Optimizes field labor
- Improves safety
- Reduces excess inventory
- Increases efficiencies
- Completes more projects on time and under budget

SERVICES

LED LIGHTING

- Lower energy consumption
- Reduced operating costs
- Increased productivity and safety
- Accelerated ROI
- LC Certified Lighting Specialist support
- Takeoff and lighting design services

DISTRIBUTION EQUIPMENT

- Gear takeoffs and design services
- Renovate existing switchgear
- Retrofit old Magnum draw-out breakers
- Refurbish mining breakers
- Training and technical support
- Replacement breakers
- On-site inventory services

POWER SOLUTIONS

- Transmission and distribution
- Pole line hardware
- Substation packaging

KEY SUPPLIER PARTNERS

LIGHTING

- Acuity Brands
- Eaton Crouse-Hinds
- Eaton's Lighting Division
- Hubbell Killark
- Hubbell Lighting
- Philips Lighting

DISTRIBUTION EQUIPMENT

- ABB
- Eaton
- Siemens

POWER SOLUTIONS

- Cooper Power Systems
- GE/Prolec
- Hubble Power Systems
- Maclean Power Systems

ELECTRICAL SOLUTIONS

With electricity being a significant percentage of the total cost of operating a mine, most mining companies are focused increasingly on energy efficiency while some are focused on generating power cost effectively themselves. With our depth and breadth of engineering capabilities, electrical products, and our supply chain capabilities, we are able to support your needs whether they include generating or distributing power, capital or maintenance.

OUR PRODUCTS

- Lighting including lamps, fixtures, ballasts and controls
- Distribution equipment including switchgear, transformers and circuit breakers
- Control and automation equipment including motor control centers
- Wire, cable, conduit and raceway
- Boxes and enclosures
- Supplies including fuses, fittings, tools, test equipment and grounding
- Pole line hardware
- MRO and safety



SECURITY SOLUTIONS AND TECHNICAL CAPABILITIES

With specific requirements and challenges related to a secure, safe and compliant work environment, the mining industry is held to a higher standard than many others as a security breach can not only result in theft and downtime, but also loss of life.

However, meeting this standard is becoming less complex as security system technology is evolving from proprietary system architectures to open-platform architectures. This provides ways for mines to leverage their security investment for greater operating efficiencies, improved incident response times and reduced false alarms, which results in operational continuity and reduced risk. Our technical security experts can also help you enhance your investment in new security technologies by building in scalability and agility for future system updates as needs change over time.

MINING SAFETY AND SECURITY CHALLENGES

- Life safety
- Theft
- False alarms
- Maintenance costs
- Emergency response
- Contractor overbilling
- Compliance
- Change in excavation site
- Perimeter security
- Personnel and asset management
- Operations monitoring
- Proprietary legacy systems

TECHNICAL EXPERTISE

Anixter's engineers provide unique understanding and insight to customers across the mining industry. As the only distributor with a dedicated electrical engineering staff, we can help you select electrical and electronic, power, communications and security systems that provide system reliability and longevity as well as regulatory compliance.

TECHNICAL CERTIFICATIONS

- ASIS CPP (Certified Protection Professional)
- More than 90 BICSI RCDDs
- PSPs (Physical Security Professional Certification)
- CCNAs (Cisco Certified Network Associate)

CAPABILITIES

- Custom cable design
- Cable specification development, review or updating
- Codes and standards interpretation
- Cable sizing to meet environmental and load conditions
- Knowledge of cable chemical resistance characteristics
- Installation and rigging recommendations
- Routing and layout planning
- Damage and failure analysis
- On-site condition assessment, troubleshooting and termination training
- Custom training

INDUSTRY ASSOCIATION AND COMMITTEE MEMBERSHIPS

- Institute of Electrical and Electronics Engineers (IEEE)
- Member of CSA 96, 96.1, M421, 298
- Telecommunications Industry Association (TIA)
- International Organization for Standardization (ISO)
- Open Network Video Interface Forum (ONVIF)
- Building Industry Consulting Services International (BICSI)
- Security Industry Association (SIA)
- Control System Integrators Association (CSIA)

SECURITY SOLUTIONS SAFETY

- Emergency notification
- Fire and intrusion detection
- Mustering
- Contractor and visitor management

SECURITY

- Loss prevention
- Perimeter protection
- Intelligent identity management
- Multifactor authentication
- Electronic key management systems
- High-security restricted key systems

MONITORING

- Machine and vehicle management
- Asset management
- Process and operating analysis
- Alarm verification and management
- Security and surveillance

DEPLOYMENT

- Lifecycle management
- Hot swappable component design
- Serial number and IP address tracking
- DOA check

KEY SUPPLIER PARTNERS

- 2N
- Assa Abloy
- Bosch
- Exacq
- HID
- Honeywell
- Louroe
- Macurco
- Milestone

RISK MANAGEMENT

Whether you're migrating from analog to IP technologies, adding on to existing systems, or implementing new systems, our field based technical resources and national network

APPLICATIONS

- Voice, data and video
- Automation
- SCADA
- Worker safety
- Environmental monitoring
- Physical security
- Cybersecurity
- Stand-alone data center
- Network management
- Above ground and underground

SOLUTIONS

- Cabling: copper, fiber optic, leaky feeder coax
- Connectivity and cable management
- Physical support, e.g., racks and cabinets
- Heating and cooling
- Network hardware
- Power supply, distribution and management
- Wireless
- Outside plant
- Tools and test equipment
- Integrator referrals
- Zone boxes
- Cybersecurity software

KEY SUPPLIER PARTNERS

- APC
- Belden
- Cisco
- Corning Cable Systems
- Hirschmann, A Belden Brand
- Hoffman
- OCC
- SolaHD

COMMUNICATIONS SOLUTIONS

Communications is another area that demands reliability and maximum uptime as it affects worker safety, costs and efficiencies. From corporate to harsh environments, we can help you select the right high-performance network hardware, cabling, infrastructure and wireless solutions. As the originator of the cabling performance specifications that later became the ANSI-TIA Category standards, our technical experts can assist in the design and deployment of the most complex and time-sensitive solutions.

ANIXTER LEVELS FOR INDUSTRIAL ENVIRONMENTS

Technology and environment are the two main considerations to take into account when designing an industrial network in mines. When weighing factors such as redundancy, mean time to failure and network topology, new technologies allow you to create a robust and resilient industrial network infrastructure. Once the right network technology decisions have been made, Anixter's Levels for Industrial Environments will simplify the product selection and deliver performance, scalability and reliability for the harshest and most mission-critical systems.

LEVEL 1

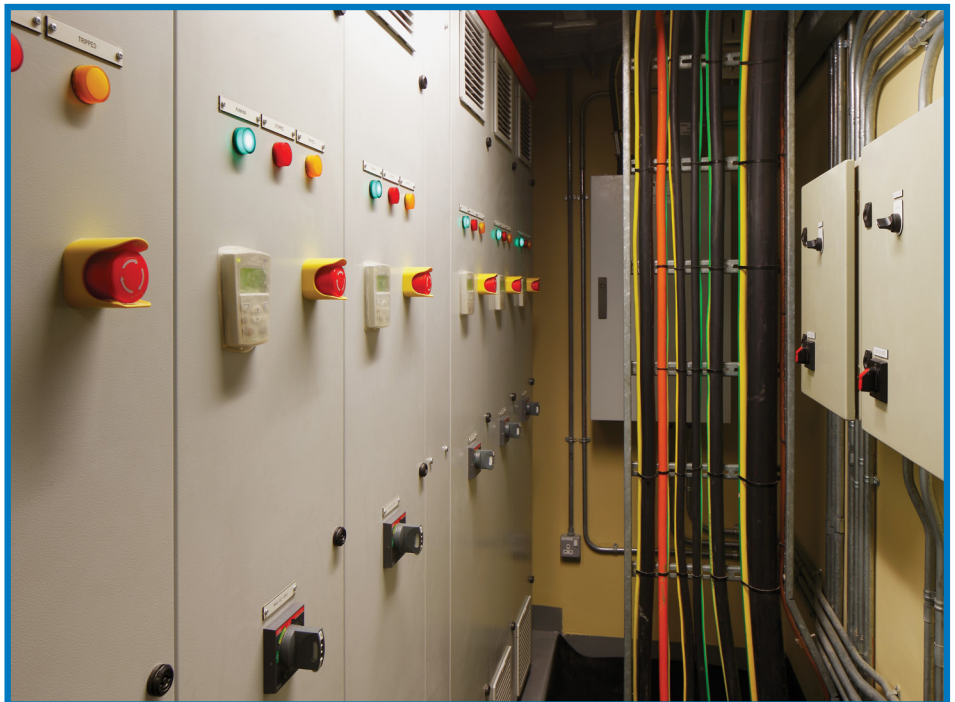
Controlled area located inside an industrial facility where cabling and components are secured from physical damage and protected from harsh environments

LEVEL 2

Inside an industrial facility where cabling and components are subjected to more extreme ambient temperatures, humidity and potential damage

LEVEL 3

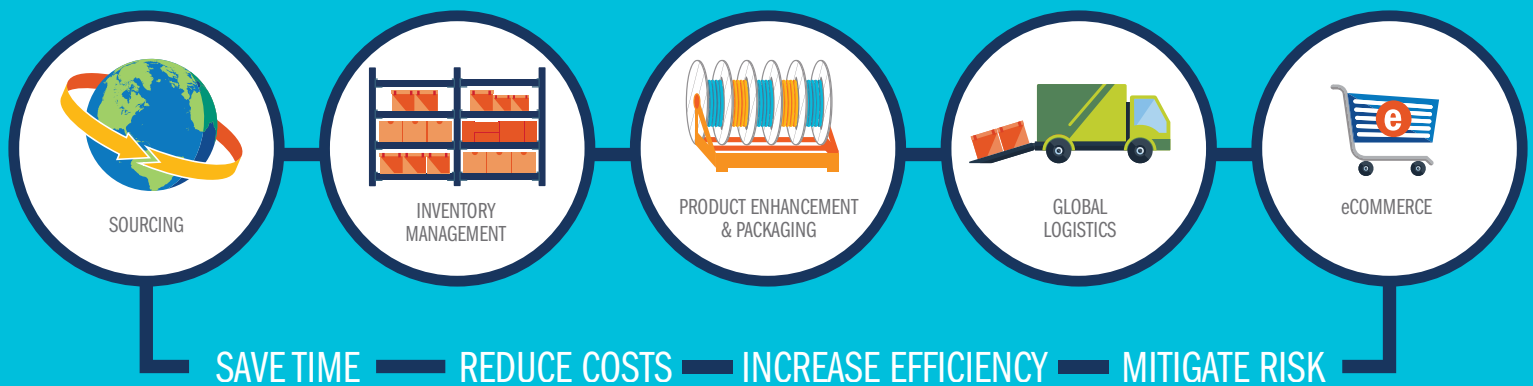
Harsh industrial and mechanical environments where cabling and components are exposed to varying temperatures, water, lubricants, humidity, dust and vibration



SUPPLY CHAIN SERVICES

Reducing costs, saving time, improving productivity and mitigating risks are our goals on every project.

With our customizable Supply Chain Solutions, you can eliminate costs, address sustainability requirements, enhance focus on your core competencies and stay competitive in the marketplace.



SOURCING

- Specification review
- Supplier management
- Part number rationalization
- Copper price risk mitigation

INVENTORY MANAGEMENT

- Forward provisioning
- On-site VMI
- Cable management
- Consignment
- Job-site trailers
- Laydown yards

PRODUCT ENHANCEMENT AND PACKAGING

- Cable preassembly
- Kitting
- Special packaging and labeling
- Asset tagging
- IP addressing
- MAC addressing
- Product DOA checks

GLOBAL LOGISTICS

- Lead time management
- Freight consolidation
- Inbound transit management
- Just-in-time delivery
- Import/export documentation

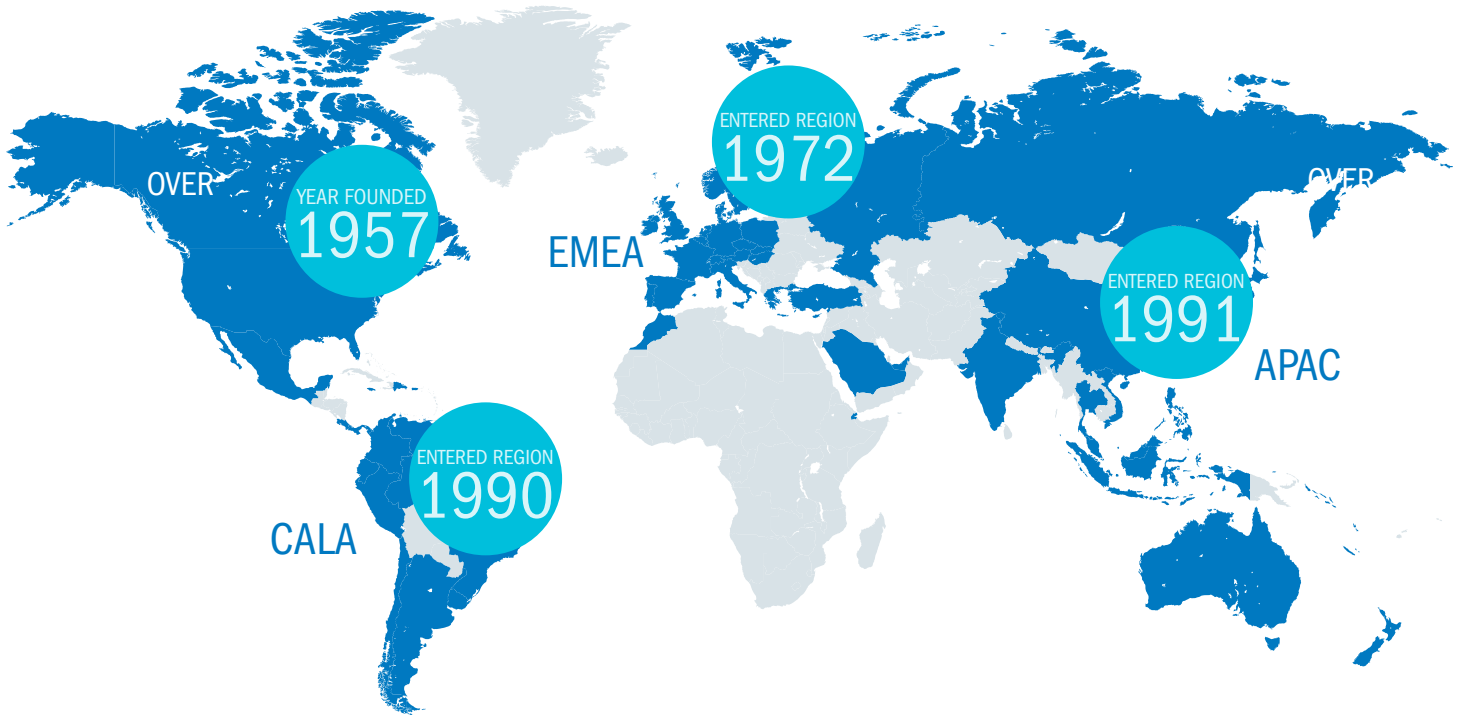
eCOMMERCE

- eAnixter pricing and order management
- e4u customer branded site
- eInvoicing, statements, reports
- EDI
- Punchout or roundtrip catalogs

While every customer has unique challenges, business needs and opportunities there is one common theme - a desire for increased efficiencies and productivity and a decrease in operational cost and working capital. Anixter's tailored Supply Chain Solutions will help you achieve those goals and provide a secure supply chain, accountability, flawless execution and an accelerated ROI.

CORPORATE SNAPSHOT

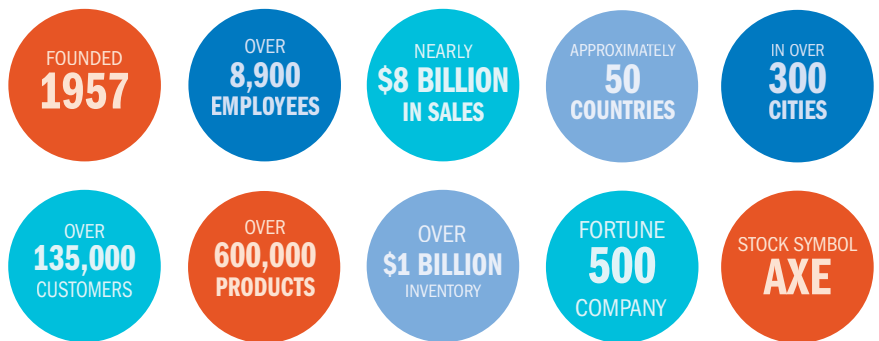
NORTH AMERICA



GLOBAL REACH. LOCAL ADVANTAGE.

With Anixter, you get a true local partner around the world. No other distributor of our kind can claim an in-country presence in approximately 50 countries and in over 300 cities.

We do business in more than 35 currencies and 30 languages, which means we are uniquely positioned to help facilitate your project in the local environment, reduce risks and keep costs down.



About Anixter: anixter.com/aboutus
Legal Statement: anixter.com/legalstatement

Anixter Inc. World Headquarters
 2301 Patriot Boulevard
 Glenview, Illinois 60026
 224.521.8000

16B6130 © 2018 Anixter Inc. · 12/18

1.800.ANIXTER | anixter.com



Products. Technology. Services. Delivered Globally.