

PRODUCT SOLUTIONS BRIEF
BERK-TEK

DATA CENTER NETWORK MIGRATION



Through our strong global partnerships and alliances with manufacturers such as Berk-Tek, we are able to present you with the following offering to meet your specific data center requirements.

OneReach™

Berk-Tek's OneReach™ System is an integrated power and data cable system. The components have been designed to work together seamlessly to make sure there is simple installation and ease of use and can extend PoE or PoE+ up to several thousand feet from the data center that supplies power and houses UPS devices.

CHALLENGE SOLVERS

- Combining optical fiber for long-distance data transmission and copper conductors in a single system extends PoE/PoE+ equipment to be located up to 3,850 ft. from the switch.
- Different design options are available for plenum or riser indoor, outdoor and indoor/outdoor installations. Armor option adds crush resistance and protection from rodent attacks.
- It makes installation easy with optional preterminated and factory-tested products arriving ready to install. Pigtails enable field termination when final run lengths are not known.
- It extends remote application options and performance with Gigabit Ethernet capability. It is ideal for IP cameras, VoIP security phones, wireless access points and other ESS devices.

THE ANIXTER APPROACH

High-Performance Structured Cabling

- **Network flexibility**
Apply designs to accommodate your performance requirements and highly scalable network architecture demands.
- **Media selection**
Choose the appropriate cabling media from twisted-pair, optical fiber and direct attached to address high-speed bandwidth requirements.

THE BERK-TEK SOLUTION

CABLE ASSEMBLY	CHASSIS SIZE	MODULE TYPE
Type Number AWG	2U 4U	Power Media Blanking panel

anixter.com/shopberktek



Now available with High PoE for up to 50 watts of remote power



WHAT WE HEAR

Data center stakeholders are dealing with a variety of challenges:



AMORTIZATION of cabling investment



Infrastructure **COMPLEXITY**



Restrictions of **LEGACY SYSTEMS**



SPEED of deployment



Pace of **INNOVATION**, adoption

Infrastructure as a Platform
by Anixter

Infrastructure as a Platform by Anixter offers a standards-based, physical layer approach that provides a foundation to meet the high-performance computing demands of your data center.

CONFIGURE

We help you discover and map your specific needs to the best solution.

- Power injector
- Cable assembly
- Remote PoE converter
- Power and media modules

BUNDLE

Your validated, preconfigured solutions are packaged and site ready.

- Wireless access points
- Security cameras
- Racks and cabinets
- UPS and PDU hardware

DEPLOY

Controlled, repeatable solutions are delivered on time and under budget.

- Custom packaging and labeling
- Time-sensitive delivery options
- Staged project shipping
- Tailored last-mile delivery

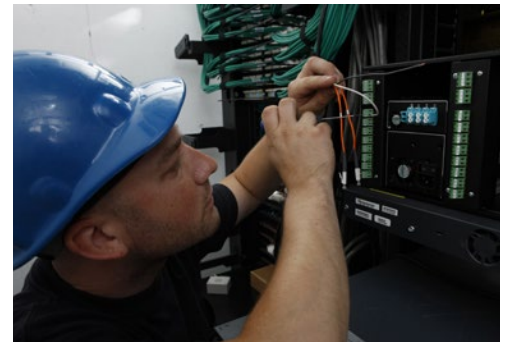
ONEREACH FEATURES

✓ SUPERIOR PERFORMANCE

- Supports Gigabit Ethernet
- OM3 optical fiber standard
- Armored cable configurations available
- CL3P-OF, dry rated or CL3R-OF, wet and dry rated

✓ INFRASTRUCTURE SIMPLIFIED

- Supports indoor, outdoor and mixed environments
- Uses standard LC connectors
- Combines control and communication in industrial pathways
- Supports single and multiport applications



One pathway. One pull. One solution.

> **FOR MORE DETAILS VISIT ANIXTER.COM/SHOPBERKTEK**

About Anixter: anixter.com/aboutus
Legal Statement: anixter.com/legalstatement

For over 30 years, Anixter has been the leading global, value-added distributor of physical layer communication infrastructure solutions for office, building and campus environments. As experts in large-scale project execution, we are a trusted supplier to leading communication integrator companies and have worked with many Fortune 500 companies.

1.800.ANIXTER | anixter.com

