

PRODUCT SOLUTIONS BRIEF
COMMSCOPE

DATA CENTRE NETWORK MIGRATION

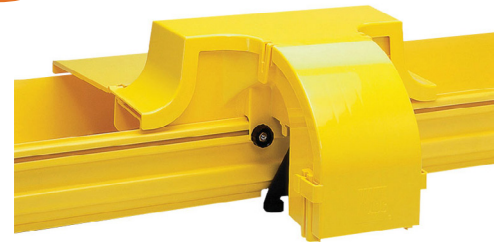


Through our strong global partnerships and alliances with manufacturers such as CommScope, we are able to present you with the following offering to meet your specific data centre requirements.

FiberGuide®

CommScope's FiberGuide is an overhead fibre cable management and raceway solution. It is designed to protect and route fibre optic patch cords, multifibre cable assemblies and intrafacility fibre cable (IFC) to and from fibre splice enclosures, fibre distribution frames and fibre optic terminal devices.

FiberGuide comprises a comprehensive set of products designed and manufactured specifically to provide total off-frame protection for your fibre optic cabling by making sure that a 2-inch (5 cm) minimum bend radius is maintained throughout the installation.



Features 38 support structures, over 75 fittings, multiple drop options and several other components to suit any application

CHALLENGE SOLVERS

- Provides bend radius protection, physical protection and segregation of fibre patch cords and cables
- Uses clearly defined cable routing paths to keep cables organised, using less space and avoiding the tangled mess of cables that can restrict airflow
- Includes Express Exit™ drops as well as toolless products including Snap-Fit junctions, snap-on covers and new hinged cover options save valuable time for installers
- Stands up to any challenge with 100 percent raceway reliability

THE ANIXTER APPROACH

High-Performance Structured Cabling

- **Network flexibility**
Apply designs to accommodate your performance requirements and highly scalable network architecture demands.
- **Cabling topology**
Determine the right choice for your computing requirements with careful consideration for end of row (EoR), middle of row (MoR), top of rack (ToR) or centralised cabling architectures.
- **Density demands**
Deploy scalable designs that accommodate for uncertain density requirements.

THE COMMSCOPE SOLUTION

RACEWAY COLOUR	SIZE	COMPONENTS
Black Yellow	Six different sizes	Junction Cover Downspout

anixter.com/shopCommScope/apac

COMMSCOPE®

WHAT WE HEAR

Data centre stakeholders are dealing with a variety of challenges:



AMORTISATION of cabling investment



Infrastructure **COMPLEXITY**



Restrictions of **LEGACY SYSTEMS**



SPEED of deployment



Pace of **INNOVATION**, adoption

Infrastructure as a Platform
by Anixter

Infrastructure as a Platform by Anixter offers a standards-based, physical layer approach that provides a foundation to meet the high-performance computing demands of your data centre.

CONFIGURE

We help you discover and map your specific needs to the best solution.

- System type and size
- System support kits
- Components
- Express Exit options

BUNDLE

Your validated, preconfigured solutions are packaged and site ready.

- Rapid fibre
- High-density equipment panels
- Racks and cabinets
- Fibre testing equipment

DEPLOY

Controlled, repeatable solutions delivered on time and under budget.

- Custom packaging and labelling
- Time-sensitive delivery options
- Staged project shipping
- Tailored last-mile delivery

FIBERGUIDE FEATURES

✓ NETWORK FLEXIBILITY

- 38 support structures
- Multiple drop options
- Over 75 fittings
- New drops with Express Exit added quickly

✓ DENSITY DEMANDS

- Provides segregation of fibre patch cords and cables
- Comes in a variety of sizes to support different densities
- Provides exceptional strength and durability for high fibre count applications
- Uses a straight section to support structure without drilling or cutting



Available in two colours, black and yellow

> FOR MORE DETAILS VISIT [ANIXTER.COM/SHOPCOMMSCOPE/APAC](https://www.anixter.com/shopcommscope/apac)

About Anixter: [anixter.com/aboutus](https://www.anixter.com/aboutus)

Legal Statement: [anixter.com/legalstatement](https://www.anixter.com/legalstatement)

For over 30 years, Anixter has been the leading global, value-added distributor of physical layer communication infrastructure solutions for office, building and campus environments. As experts in large-scale project execution, we are a trusted supplier to leading communication integrator companies and have worked with many Fortune 500 companies.

1.800.ANIXTER | [anixter.com](https://www.anixter.com)

