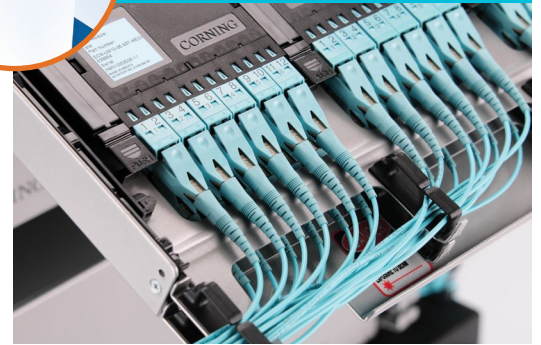


PRODUCT SOLUTIONS BRIEF
CORNING

DATA CENTRE NETWORK MIGRATION



Pretium EDGE® universal platform

Through our strong global partnerships and alliances with manufacturers such as Corning, we are able to present you with the following offering to meet your specific data centre requirements.

LANscape® Pretium EDGE® Solutions by Corning

Corning's Pretium EDGE Solutions are a scalable structured cabling platform that will seamlessly migrate to the evolving network technologies of the data centre.

Regardless if you need an indoor/outdoor preterminated solution for the MPOE or a modular, high-density solution for your SAN, Pretium EDGE Solutions components have been developed specifically for adaptation to each space within the data centre. With the Pretium EDGE solution, Corning has already solved the problems that you didn't even know you had.

CHALLENGE SOLVERS

- Migrates to meet evolving network requirements of 10G/40G/100G data rates while utilising 100 percent of the installed Pretium EDGE solution, minimising upgrade cost
- Provides easily accessible port access, reducing risk of downtime in critical data centre environments
- Offers a universal platform to provide network flexibility in support of the many applications in the data centre, including network monitoring, secure solutions and spine and leaf architecture designs
- Uses Corning® ClearCurve® bend-optimised optical fibre to enable a significant improvement with density and to provide reliability, even in the most challenging of scenarios

THE ANIXTER APPROACH

High-Performance Structured Cabling

- **Network flexibility**
Apply designs to accommodate your performance requirements and highly scalable network architecture demands.
- **Density demands**
Deploy scalable designs that accommodate for uncertain density requirements.
- **Cabling topology**
Determine the right choice for your computing requirements with careful consideration for end of row (EoR), middle of row (MoR), top of rack (ToR) or centralised cabling architectures.

THE CORNING SOLUTION

ENCLOSURES

Pretium EDGE housings

CABLE AND ASSEMBLIES

Pretium EDGE cabling
Pretium EDGE harnesses
Pretium EDGE jumpers

MODULES

Pretium EDGE modules

CORNING

WHAT WE HEAR

Challenges from various data centre stakeholders:



AMORTISATION of cabling investment



Infrastructure **COMPLEXITY**



Restrictions of **LEGACY SYSTEMS**



SPEED of deployment



Pace of **INNOVATION**, adoption

Infrastructure as a Platform
by Anixter

Infrastructure as a Platform by Anixter offers a standards-based, physical layer approach that provides a foundation to meet the high-performance computing demands of your data centre.

CONFIGURE

We help you discover and map your specific needs to the best solution.

- Pretium EDGE housings
- Pretium EDGE trunks
- Pretium EDGE modules
- Pretium EDGE connector panels

BUNDLE

Your validated, preconfigured solutions are packaged and site ready.

- Pretium EDGE solutions
- Pretium EDGE tap modules
- Racks and cabinets
- Fibre testing equipment

DEPLOY

Controlled, repeatable solutions are delivered on time and under budget.

- Custom packaging and labelling
- Time-sensitive delivery options
- Staged project shipping
- Tailored last-mile delivery

LANSCAPE® PRETIUM EDGE® FEATURES

✓ NETWORK FLEXIBILITY

- Multiple mounting options for custom cabinets and racks, and even overhead applications
- Shuttered adapters that provide dust protection
- Quick mounting system for one-person installation
- Housings that include integrated strain-relief for quick mounting of MTP trunks
- Keyed and colour connector options for visual network segregation
- Universal wiring to eliminate the need for field polarity management

✓ DENSITY DEMANDS

- 576 fibres in 4U housing for LC connectors
- 3456 fibres in a single 4U housing utilising MTP® technology
- Easily accessible port access for the most usable high-density solution available
- AO conversion modules that provide 100 percent fibre utilisation when deploying parallel optics
- Ultra low-loss performance with 0.35 dB modules
- Reduced cabling footprint for improved airflow



LANscape® Pretium EDGE® solution

> FOR MORE DETAILS VISIT [ANIXTER.COM/SHOPCORNING/APAC](https://www.anixter.com/shopcorning/apac)

About Anixter: [anixter.com/aboutus](https://www.anixter.com/aboutus)

Legal Statement: [anixter.com/legalstatement](https://www.anixter.com/legalstatement)

At Anixter, we enable the connected world. By building, connecting, protecting and powering valuable assets and critical infrastructures, we help to sustain and grow businesses and communities worldwide. We accomplish this by offering full-line solutions, technical intelligence, supply chain expertise and an unmatched global distribution network.

[anixter.com/asiapacific](https://www.anixter.com/asiapacific)



17T8695APAC © 2017 Anixter Inc.

Products. Technology. Services. Delivered Globally.