

PRODUCT SOLUTIONS BRIEF  
**CORNING**

**DATA CENTER NETWORK MIGRATION**

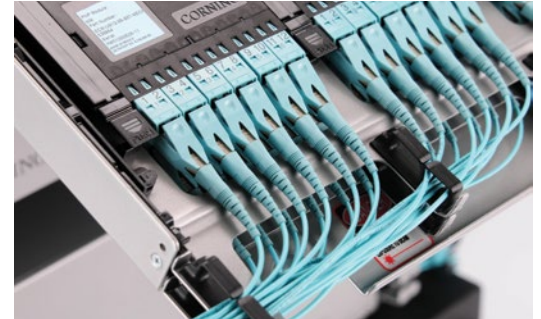


Through our strong global partnerships and alliances with manufacturers such as Corning, we are able to present you with the following offering to meet your specific data center requirements.

**LANscape® Pretium EDGE® Solutions by Corning**

Corning’s Pretium EDGE Solutions are a scalable structured cabling platform that will seamlessly migrate to the evolving network technologies of the data center.

Regardless if you need an indoor/outdoor preterminated solution for the MPOE or a modular, high-density solution for your SAN, Pretium EDGE Solutions components have been developed specifically for adaptation to each space within the data center. With the Pretium EDGE solution, Corning has already solved the problems that you didn’t even know you had.



Pretium EDGE® universal platform

**CHALLENGE SOLVERS**

- Migrates to meet evolving network requirements of 10G/40G/100G data rates while utilizing 100 percent of the installed Pretium EDGE solution, minimizing upgrade cost
- Provides easily accessible port access, reducing risk of downtime in critical data center environments
- Offers a universal platform to provide network flexibility in support of the many applications in the data center, including network monitoring, secure solutions and spine and leaf architecture designs
- Uses Corning® ClearCurve® bend-optimized optical fiber to enable a significant improvement with density and to provide reliability, even in the most challenging of scenarios

**THE ANIXTER APPROACH**

High-Performance Structured Cabling

- **Network flexibility**  
Apply designs to accommodate your performance requirements and highly scalable network architecture demands.
- **Density demands**  
Deploy scalable designs that accommodate for uncertain density requirements.
- **Cabling topology**  
Determine the right choice for your computing requirements with careful consideration for end-of-row (EoR), middle-of-row (MoR), top-of-rack (ToR) or centralized cabling architectures.

**THE CORNING SOLUTION**

| ENCLOSURES            | CABLE AND ASSEMBLIES   | MODULES              |
|-----------------------|--|----------------------|
| Pretium EDGE housings | Pretium EDGE cabling<br>Pretium EDGE harnesses<br>Pretium EDGE jumpers | Pretium EDGE modules |

[anixter.com/shopcorning](http://anixter.com/shopcorning)

**CORNING**

**WHAT WE HEAR**

Challenges from various data center stakeholders:



**AMORTIZATION** of cabling investment



Infrastructure **COMPLEXITY**



Restrictions of **LEGACY SYSTEMS**



**SPEED** of deployment



Pace of **INNOVATION**, adoption

**Infrastructure as a Platform**  
by Anixter

Infrastructure as a Platform by Anixter offers a standards-based, physical layer approach that provides a foundation to meet the high-performance computing demands of your data center.

## CONFIGURE

We help you discover and map your specific needs to the best solution.

- Pretium EDGE housings
- Pretium EDGE trunks
- Pretium EDGE modules
- Pretium EDGE connector panels

## BUNDLE

Your validated, preconfigured solutions are packaged and site ready.

- Pretium EDGE solutions
- Pretium EDGE tap modules
- Racks and cabinets
- Fiber testing equipment

## DEPLOY

Controlled, repeatable solutions are delivered on time and under budget.

- Custom packaging and labeling
- Time-sensitive delivery options
- Staged project shipping
- Tailored last-mile delivery

## LANDSCAPE PRETIUM EDGE FEATURES

### ✓ NETWORK FLEXIBILITY

- Multiple mounting options for custom cabinets and racks, and even overhead applications
- Shuttered adapters that provide dust protection
- Quick mounting system for one-person installation
- Housings that include integrated strain-relief for quick mounting of MTP trunks
- Keyed and color connector options for visual network segregation
- Universal wiring to eliminate the need for field polarity management

### ✓ DENSITY DEMANDS

- 576 fibers in 4U housing for LC connectors
- 3456 fibers in a single 4U housing utilizing MTP® technology
- Easily accessible port access for the most usable high-density solution available
- AO conversion modules that provide 100 percent fiber utilization when deploying parallel optics
- Ultra low-loss performance with 0.35 dB modules
- Reduced cabling footprint for improved airflow



LANscape Pretium EDGE solution

**> FOR MORE DETAILS VISIT [ANIXTER.COM/SHOPCORNING](https://www.anixter.com/shopcorning)**

**About Anixter:** [anixter.com/aboutus](https://www.anixter.com/aboutus)

**Legal Statement:** [anixter.com/legalstatement](https://www.anixter.com/legalstatement)

For over 30 years, Anixter has been the leading global, value-added distributor of physical layer communication infrastructure solutions for office, building and campus environments. As experts in large-scale project execution, we are a trusted supplier to leading communication integrator companies and have worked with many Fortune 500 companies.

1.800.ANIXTER | [anixter.com](https://www.anixter.com)

