

PRODUCT SOLUTIONS BRIEF
CORNING

DATA CENTER NETWORK MIGRATION

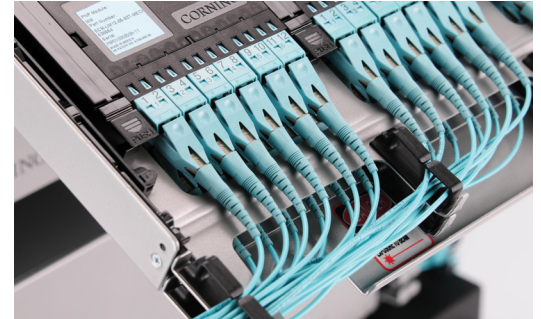


Through our strong global partnerships and alliances with manufacturers such as Corning, we are able to present you with the following offering to meet your specific data center requirements.

LANscape® Pretium EDGE® Solutions by Corning

Corning's Pretium EDGE Solutions are a scalable structured cabling platform that will seamlessly migrate to the evolving network technologies of the data center.

Regardless if you need an indoor/outdoor preterminated solution for the MPOE or a modular, high-density solution for your SAN, Pretium EDGE Solutions components have been developed specifically for adaptation to each space within the data center. With the Pretium EDGE solution, Corning has already solved the problems that you didn't even know you had.



Pretium EDGE® universal platform

CHALLENGE SOLVERS

- Migrates to meet evolving network requirements of 10G/40G/100G data rates while utilizing 100 percent of the installed Pretium EDGE solution, minimizing upgrade cost
- Provides easily accessible port access, reducing risk of downtime in critical data center environments
- Offers a universal platform to provide network flexibility in support of the many applications in the data center, including network monitoring, secure solutions and spine and leaf architecture designs
- Uses Corning® ClearCurve® bend-optimized optical fiber to enable a significant improvement with density and to provide reliability, even in the most challenging of scenarios

THE ANIXTER APPROACH

High-Performance Structured Cabling

- **Network flexibility**
Apply designs to accommodate your performance requirements and highly scalable network architecture demands.
- **Cabling topology**
Determine the right choice for your computing requirements with careful consideration for end of row (EoR), middle of row (MoR), top of rack (ToR) or centralized cabling architectures.
- **Density demands**
Deploy scalable designs that accommodate for uncertain density requirements.

THE CORNING SOLUTION

ENCLOSURES	CABLE AND ASSEMBLIES	MODULES
Pretium EDGE housings	Pretium EDGE cabling Pretium EDGE harnesses Pretium EDGE jumpers	Pretium EDGE modules

anixter.com/shopcorning

CORNING

WHAT WE HEAR

Challenges from various data center stakeholders:



AMORTIZATION of cabling investment



Infrastructure **COMPLEXITY**



Restrictions of **LEGACY SYSTEMS**



SPEED of deployment



Pace of **INNOVATION**, adoption

Infrastructure as a Platform
by Anixter

Infrastructure as a Platform by Anixter offers a standards-based, physical layer approach that provides a foundation to meet the high-performance computing demands of your data center.

CONFIGURE

We help you discover and map your specific needs to the best solution.

- Pretium EDGE housings
- Pretium EDGE trunks
- Pretium EDGE modules
- Pretium EDGE connector panels

BUNDLE

Your validated, preconfigured solutions are packaged and site ready.

- Pretium EDGE solutions
- Pretium EDGE tap modules
- Racks and cabinets
- Fiber testing equipment

DEPLOY

Controlled, repeatable solutions are delivered on time and under budget.

- Custom packaging and labeling
- Time-sensitive delivery options
- Staged project shipping
- Tailored last-mile delivery

LANSCAPE® PRETIUM EDGE® FEATURES

✓ NETWORK FLEXIBILITY

- Multiple mounting options for custom cabinets and racks, and even overhead applications
- Shuttered adapters that provide dust protection
- Quick mounting system for one-person installation
- Housings that include integrated strain-relief for quick mounting of MTP trunks
- Keyed and color connector options for visual network segregation
- Universal wiring to eliminate the need for field polarity management

✓ DENSITY DEMANDS

- 576 fibers in 4U housing for LC connectors
- 3456 fibers in a single 4U housing utilizing MTP® technology
- Easily accessible port access for the most usable high-density solution available
- AO conversion modules that provide 100 percent fiber utilization when deploying parallel optics
- Ultra low-loss performance with 0.35 dB modules
- Reduced cabling footprint for improved airflow



Lanscape® Pretium EDGE® solution

> FOR MORE DETAILS VISIT ANIXTER.COM/SHOPCORNING

About Anixter: anixter.com/aboutus

Legal Statement: anixter.com/legalstatement

For over 30 years, Anixter has been the leading, global, value-added distributor of physical layer communication infrastructure solutions for office, building and campus environments. As experts in large-scale project execution, we are a trusted supplier to leading communication integrator companies and have worked with many Fortune 500 companies.

1.800.ANIXTER | anixter.com

