

PRODUCT SOLUTIONS BRIEF  
CORNING

DATA CENTER NETWORK MIGRATION

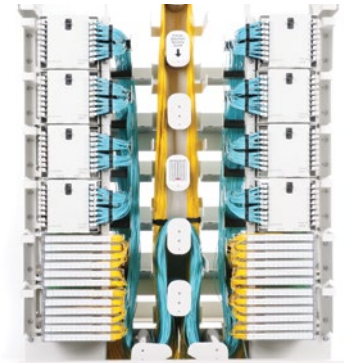


Through our strong global partnerships and alliances with manufacturers such as Corning, we are able to present you with the following offering to meet your specific data center requirements.

**Pretium® EDGE Enabled Enhanced Management Frame**

Corning's Pretium EDGE enabled Enhanced Management Frame (EMF) is designed for cross-connect applications in the main distribution area (MDA) of the data center. It is built from a modular platform that allows capacity scaling at both the housing and module.

The EMF can be used with several housing options, including MTP connectivity via Pretium EDGE housings. These housings accommodate the Pretium EDGE MTP to LC modules and MTP panels for rapid, dependable data center deployment.



Multiple interbay routing options allows for physical cabling media usage flexibility.

**CHALLENGE SOLVERS**

- User-friendly features such as in-bay jumper storage uses single-length jumpers for frame connections, which makes ordering easier.
- For application flexibility, the frame uses both Pretium EDGE and EMF housings to support in-frame splice, stubbed hardware and splitters/couplers for wavelength division multiplexing applications.
- Integrated horizontal jumper troughs eliminate the need for additional overhead pathways, which improves the speed of deployment and reduces cabling investment costs.
- Separate jumper storage and horizontal pathways eliminate jumper entanglement at vertical crossings, which helps to improve manageability.

**THE ANIXTER APPROACH**

High-Performance Structured Cabling

- **Network flexibility**  
Apply designs to accommodate your performance requirements and highly scalable network architecture demands.
- **Cabling topology**  
Determine the right choice for your computing requirements with careful consideration for end-of-row (EoR), middle-of-row (MoR), top-of-rack (ToR) or centralized cabling architectures.
- **Density demands**  
Deploy scalable designs that accommodate for uncertain density requirements.

**THE CORNING SOLUTION**

| EMF FRAME BAY                                                        | EMF HOUSINGS AND ACCESSORIES | EMF MODULES           |
|----------------------------------------------------------------------|------------------------------|-----------------------|
| Front panel cover<br>End cap<br>Storage unit<br>Rear jumper trough   | Empty<br>Fully populated     | MTP®<br>Pretium EDGE® |
| <a href="http://anixter.com/shopcorning">anixter.com/shopcorning</a> |                              |                       |

CORNING

**WHAT WE HEAR**

Challenges from various data center stakeholders:



**AMORTIZATION** of cabling investment



Infrastructure **COMPLEXITY**



Restrictions of **LEGACY SYSTEMS**



**SPEED** of deployment



Pace of **INNOVATION**, adoption

**Infrastructure as a Platform**  
by Anixter

Infrastructure as a Platform by Anixter offers a standards-based, physical layer approach that provides a foundation to meet the high-performance computing demands of your data center.

## CONFIGURE

We help you discover and map your specific needs to the best solution.

- Network bay frame
- EMF Pretium housing
- Trunks and modules
- Connector panels

## BUNDLE

Your validated, preconfigured solutions are packaged and site ready.

- Pretium EDGE solutions
- Pretium EDGE tap modules
- Racks and cabinets
- Network test equipment

## DEPLOY

Controlled, repeatable solutions are delivered on time and under budget.

- Custom packaging and labeling
- Time-sensitive delivery options
- Staged project shipping
- Tailored last-mile delivery

## PRETIUM EDGE ENABLED EMF FEATURES

### ✓ NETWORK FLEXIBILITY

- Integrated splice capability
- Keyed and color connector options for visual network segregation
- Individual 12-fiber modules that maximize scalability and modularity
- Housings that include integrated strain-relief for quick mounting of MTP trunks

### ✓ DENSITY DEMANDS

- Frame that supports 2,304 LC fiber terminations
- Easily accessible port access for the most usable high-density solution available
- Ultra low-loss performance with 0.35 dB modules
- EMF MTP housings reduce fiber trough build by 91%



EMF front-loading housing features modules that extend and retract independently to minimize connector disturbance.

**> FOR MORE DETAILS VISIT [ANIXTER.COM/SHOPCORNING](https://www.anixter.com/shopcorning)**

**About Anixter:** [anixter.com/aboutus](https://www.anixter.com/aboutus)  
**Legal Statement:** [anixter.com/legalstatement](https://www.anixter.com/legalstatement)

For over 30 years, Anixter has been the leading global, value-added distributor of physical layer communication infrastructure solutions for office, building and campus environments. As experts in large-scale project execution, we are a trusted supplier to leading communication integrator companies and have worked with many Fortune 500 companies.

1.800.ANIXTER | [anixter.com](https://www.anixter.com)

