

PRODUCT SOLUTIONS BRIEF

LEVITON

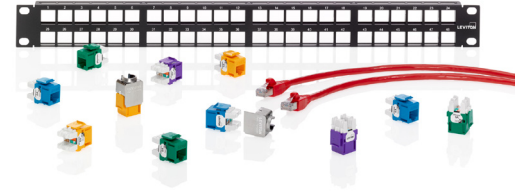
MICRO DATA CENTER NETWORK MIGRATION



Through our strong global partnerships and alliances with manufacturers such as Leviton, we are able to present you with the following offering to meet your specific data center requirements.

eXtreme® Enhanced Copper System

Leviton's eXtreme Enhanced Copper System pairs high-quality, guaranteed performance with a user-friendly design to support fast, easy installations. With enhanced performance and unmatched system longevity, the eXtreme copper system is well suited for an extensive range of enterprise and commercial networks.



High-quality, guaranteed performance and a user-friendly design supports fast, easy installations.

CHALLENGE SOLVERS

- The patented design minimizes alien crosstalk while supporting high-density applications, making this system a true multimedia solution, capable of handling voice, video and data up to 10 Gigabit Ethernet speeds.
- eXtreme UTP Patch Cords supports traditional density panels and switches while the snagless plug enables easy moves, adds and changes.
- Innovative cutting ledge and pair separation towers simplify punchdowns and support faster terminations.
- eXtreme Connectors are tested to stringent requirements to ensure performance is above the industry standard.
- Connectors are compatible with Fluke JackRapid™ Punchdown and Leviton Palm Tool for quick and easy terminations.

THE ANIXTER APPROACH

- **Network flexibility**
Apply designs to accommodate your performance requirements and highly scalable network architecture demands.
- **Cabling topology**
Determine the right choice for your computing requirements with careful consideration for end-of-row (EoR), middle-of-row (MoR), top-of-rack (ToR) or centralized cabling structures.
- **Media selection**
Choose the appropriate cabling media from twisted pair, optical fiber and direct attached to address high-speed bandwidth requirements.
- **Density demands**
Deploy scalable designs that accommodate for uncertain density requirements.

THE LEVITON SOLUTION

CATEGORIES	PATCH PANELS	CONNECTOR COLORS
Cat 6A Cat 6 Cat 5e	12, 24, 48 or 96 ports Flat Recessed flat Recessed angled	13 options

anixter.com/shopleviton



WHAT WE HEAR

Data center stakeholders are dealing with a variety of challenges:



AMORTIZATION of cabling investment



Infrastructure **COMPLEXITY**



Restrictions of **LEGACY SYSTEMS**



SPEED of deployment



Pace of **INNOVATION**, adoption

Infrastructure as a Platform
by Anixter

Infrastructure as a Platform by Anixter offers a standards-based, physical layer approach that provides a foundation to meet the high-performance computing demands of your data center.

CONFIGURE

We help you discover and map your specific needs to the best solution.

- Patch cords
- Patch panels
- Connectors
- Cabling

BUNDLE

Your validated, preconfigured solutions are packaged and site ready.

- UTP patch cords
- QuickPort connector
- Wall-mount wiring block kit
- Cassettes

DEPLOY

Controlled, repeatable solutions are delivered on time and under budget.

- Custom packaging and labeling
- Time-sensitive delivery options
- Staged project shipping
- Tailored last-mile delivery

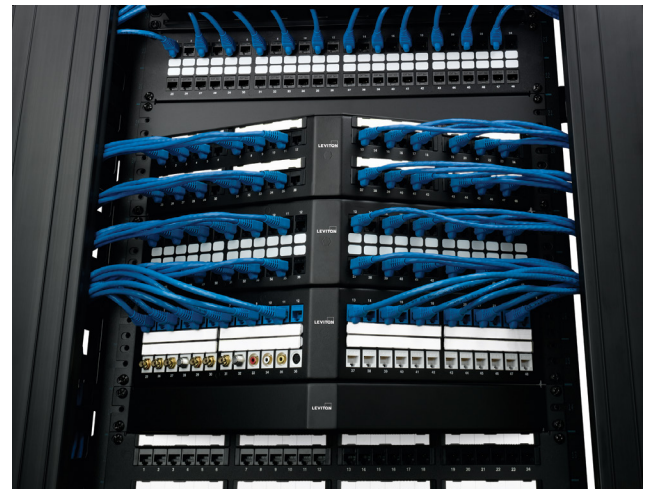
LEVITON EXTREME COPPER SYSTEM FEATURES

✓ NETWORK FLEXIBILITY

- Margin guarantees and third-party testing and verification for confidence in performance
- Thirteen color options for greater network planning flexibility
- Stranded conductors support long-term channel integrity for Cat 6A
- Retention Force Technology (RFT) protects against time damage and increases system longevity
- Cables improved insertion loss for stronger signal-to-noise ratio

✓ DENSITY DEMANDS

- Improved channel performance that exceeds industry standards
- Easy installation and available in a multitude of port densities to support high-speed applications
- Snagless design prevents tab breakage on Cat 5e, 6 and 6A patch cords
- Patented Cone of Silence provides additional alien crosstalk suppression for Cat 6A
- Guaranteed electrical performance that goes well beyond their 5e, 6 and 6A category ratings



A true multimedia solution, capable of handling voice, video, and data up to 10 Gigabit Ethernet speeds.

> FOR MORE DETAILS VISIT ANIXTER.COM/SHOPLEVITON

About Anixter: anixter.com/aboutus

Legal Statement: anixter.com/legalstatement

At Anixter, we enable the connected world. By building, connecting, protecting and powering valuable assets and critical infrastructures, we help to sustain and grow businesses and communities worldwide. We accomplish this by offering full-line solutions, technical intelligence, supply chain expertise and an unmatched global distribution network.

1.800.ANIXTER | anixter.com

