

PRODUCT SOLUTIONS BRIEF
TRIPP LITE

DATA CENTRE POWER OPTIMISATION



Through our strong global partnerships and alliances with manufacturers such as Tripp Lite, we are able to present you with the following offering to meet your specific data centre requirements.

3-Phase LX Platform Power Distribution Units

Tripp Lite's newest 3-phase PDUs have a built-in LX Platform interface that is HTML5-based, so it does not require Java. The interface supports complete remote access for power monitoring and email notifications via a secure web browser, SNMP, telnet or SSH. The touchscreen LCD can also generate a unique QR code to allow read-only access to the PDU via a mobile device. When used with optional EnviroSense2 sensors, the LX Platform interface and touchscreen LCD can provide monitoring of temperature, humidity and dry contact connections.



Built-In LX Platform Network Management Card allows remote access 24/7

CHALLENGE SOLVERS

- HTML5-based for greater browser compatibility without Java
- LCD touchscreen provides easy-to-navigate menus to view network data and load levels
- Provides real-time remote monitoring of voltage and load levels; switched models offer individual outlet control
- Support for PDU monitoring on a mobile device

THE ANIXTER APPROACH

- **Facility power**
Design scalable solutions that cater for data centre growth and flexibility.
- **Building distribution**
Adopt an integrated power solution that can be metered, monitored and designed for continuity.
- **Data hall distribution**
Consider highly efficient solutions that maximise power quality and minimise operational expenses.
- **Cabinet distribution**
Deploy intelligent PDUs that generate alert notifications that mitigate human error.
- **IT equipment**
Install as a minimum 208 v or 230 v inputs and universal locking cords to enhance efficiency and improve uptime.

THE TRIPP LITE SOLUTION

PDU TYPE	TOTAL OUTLETS		ACCESSORIES
Monitored	18	42	Software
Switched	24	45	Management Hardware
	30	48	Power Cords
	36		

anixter.com/shoptriplite/emea



Powering and Connecting
Your World

WHAT WE HEAR

Challenges from various data centre stakeholders:



Cannot gauge **CAPACITY** needs



Budgeting of unpredictable **IT REQUIREMENTS**



Lack of **TOTAL POWER CHAIN** visibility



PREVENTING accidental outages



PERFORMANCE vs. COST

Infrastructure as a Platform
by Anixter

Infrastructure as a Platform by Anixter provides a practical, configurable and integrated approach to retrofitting or building an intelligent power chain into your data centre environment.

CONFIGURE

We help you discover and map your specific needs to the best solution.

- Form Factor
- Input Voltage
- Plug Type
- Total Outlets and Types

BUNDLE

Your validated, preconfigured solutions are packaged and site ready.

- Racks
- UPS Systems
- KVMs
- Cables and Connectivity

DEPLOY

Controlled, repeatable solutions are delivered on time and under budget.

- Custom packaging and labelling
- Time-sensitive delivery options
- Staged project shipping
- Tailored last-mile delivery

TRIPP LITE 3-PHASE LX PLATFORM POWER DISTRIBUTION UNITS FEATURES

✓ 3-PHASE PDU DISTRIBUTES AND MONITORS NETWORK-GRADE POWER

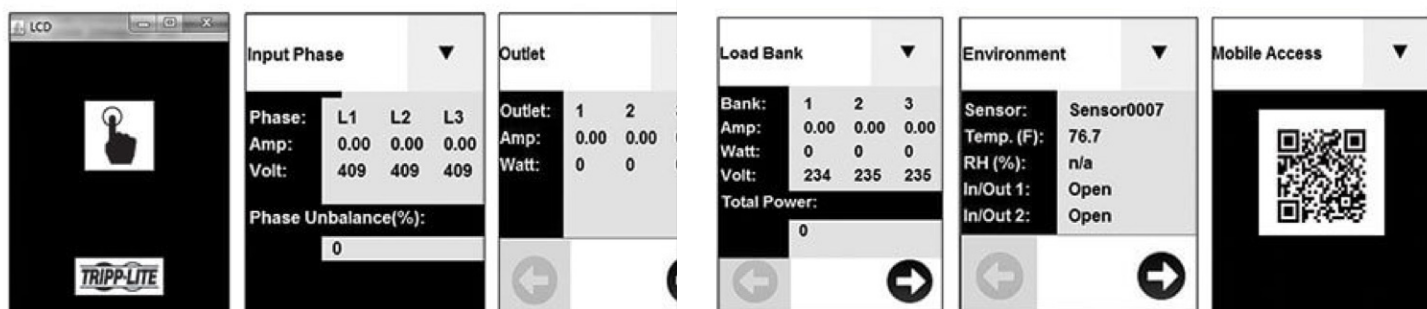
- Provides real-time remote monitoring of voltage and load levels via its built-in network interface
- Ideal for data centres, server rooms and high-density network closets

✓ COLOUR TOUCHSCREEN LCD OFFERS IMPORTANT DATA AT A GLANCE

- An easy-to-navigate colour touchscreen LCD reports network data, including IP address, input current level per phase, and output current per load bank with $\pm 1\%$ billing-grade accuracy

✓ EASY TO INSTALL VERTICALLY IN AN EIA-STANDARD 19 IN. RACK

- The OU PDU mounts vertically using the included toolless mounting buttons or the included rack-mounting brackets.



LCD touchscreen provides easy-to-navigate menus to view network data and load levels

> FOR MORE DETAILS VISIT [ANIXTER.COM/SHOPTRIPLITE/EMEA](https://www.anixter.com/shoptriplite/emea)

About Anixter: [anixter.com/aboutus](https://www.anixter.com/aboutus)

Legal Statement: [anixter.com/legalstatement](https://www.anixter.com/legalstatement)

[anixter.com/emea](https://www.anixter.com/emea)

Anixter International is a leading global distributor of Network & Security Solutions, Electrical & Electronic Solutions and Utility Power Solutions. We help build, connect, protect, and power valuable assets and critical infrastructures. From enterprise networks to industrial MRO supply to video surveillance applications to electric power distribution, we offer full-line solutions, and intelligence, that create reliable, resilient systems that sustain businesses and communities. Through our unmatched global distribution network along with our supply chain and technical expertise, we help lower the cost, risk and complexity of our customers' supply chains.