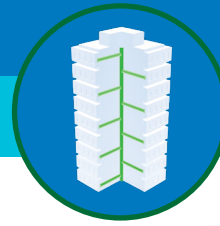


PRODUCT SOLUTIONS BRIEF  
**ALLIED TELESIS**

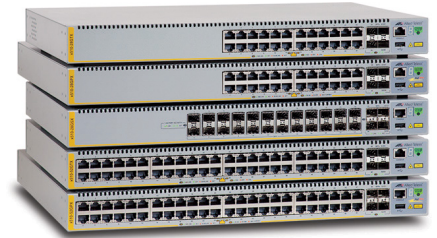
**COMMERCIAL BUILDING NETWORK PERFORMANCE**



Through our strong global partnerships and alliances with manufacturers such as Allied Telesis, we are able to present you with the following offering to meet your specific commercial building requirements.

**x510 Series Switch**

The Allied Telesis x510 Series switches are a high-performing and feature-rich choice for today's networks. They offer a versatile solution for embedded applications. With a choice of 24-port and 48-port models with 1/10Gigabit uplink ports, plus the power of Allied Telesis Virtual Chassis Stacking (VCStack™), the x510 Series is the ideal platform for building and integrated communications network for converged building services.



The x510 Series enables a future-proof network, with superior flexibility coupled with the ability to stack multiple units.

**CHALLENGE SOLVERS**

- Power over Ethernet Plus (PoE+)
  - Provides the capability to connect devices requiring more power (up to 30 watts) such as pan, tilt and zoom security cameras.
- Long-distance stacking
  - Allows a VCStack to be created over longer distances, perfect for a distributed network environment.
- Allied Telesis Management Framework (AMF)
  - A sophisticated suite of management tools that provide a simplified approach to network management.
  - Reduces complexity and delivers operational expenditure savings improving performance and reducing lifecycle costs

**THE ANIXTER APPROACH**

- **Network Flexibility**  
 Apply open architecture designs to accommodate your performance requirements for a highly scalable network.
- **Wireless Mobility**  
 Determine your migration path for Wi-Fi and in-building cellular connectivity to support a multi-screen environment.
- **Application Support**  
 Deploy scalable designs that can support multiple and varied applications over a high-performance, IP-based structured cabling system.

**THE ALLIED TELESIS SOLUTION**

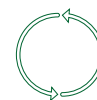
SWITCHES	SOFTWARE	ACCESSORIES
24 or 48 ports SFP or copper ports PoE+-enabled ports	x510 premium license 10G upgrade license AMF master license OpenFlow license	Power supplies SFP modules SFP+ modules

[anixter.com/shopalliedtelesis/apac](http://anixter.com/shopalliedtelesis/apac)



**WHAT WE HEAR**

Challenges from the various commercial building stakeholders are:



Keeping up with **EVOLVING TECHNOLOGIES**



**AMORTISATION** of cabling systems



Supporting multiple **APPLICATIONS**



Reducing network **DOWNTIME**



Coping with **INCREASING BANDWIDTH**

**Infrastructure as a Platform**  
by Anixter

Infrastructure as a Platform by Anixter offers a standards-based, physical layer approach that provides a foundation to meet the high-performance demands of your commercial building.

### CONFIGURE

We help you discover and map your specific needs to the best solution.

- PoE requirements
- Media type
- Density demands
- Software licenses

### BUNDLE

Your validated, preconfigured solutions are packaged and site ready.

- Switch
- Power supplies
- SFP and SFP+ modules
- Copper and fibre cabling

### DEPLOY

Controlled, repeatable solutions are delivered on time and under budget.

- Custom packaging and labelling
- Time-sensitive delivery options
- Staged project shipping
- Tailored last-mile delivery

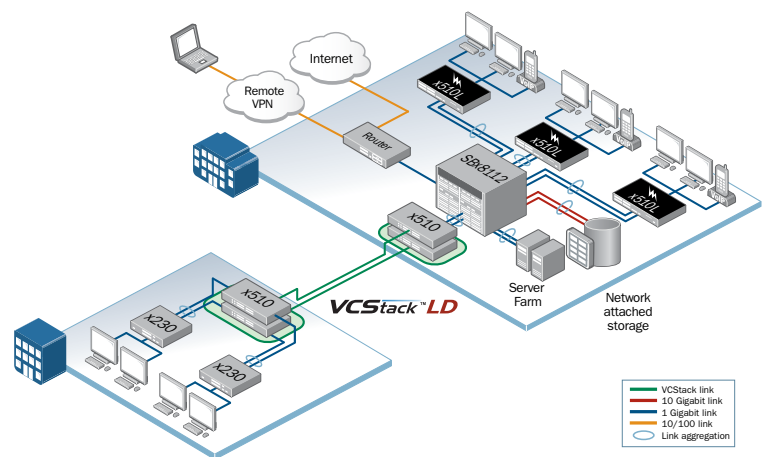
### ALLIED TELESIS X510 SERIES SWITCH FEATURES

#### ✓ KEEP UP WITH EVOLVING TECHNOLOGIES

- 1/10 gigabit uplink ports and a comprehensive IPv6 feature set
- Software Defined Networking (SDN) ready
- Supports OpenFlow v1.3

#### ✓ SUPPORT MULTIPLE APPLICATIONS

- The complete network can be managed as a single virtual device.
- AMF Guestnode allows third-party devices, such as IP phones and security cameras.
- Growing the network can be accomplished with plug-and-play simplicity.



Allied Telesis x510 Series switches are ideal for distribution solutions, where resiliency and flexibility are required.

**> FOR MORE DETAILS VISIT [ANIXTER.COM/SHOPALLIEDTELESIS/APAC](http://ANIXTER.COM/SHOPALLIEDTELESIS/APAC)**

**About Anixter:** [anixter.com/aboutus](http://anixter.com/aboutus)  
**Legal Statement:** [anixter.com/legalstatement](http://anixter.com/legalstatement)

At Anixter, we enable the connected world. By building, connecting, protecting and powering valuable assets and critical infrastructures, we help to sustain and grow businesses and communities worldwide. We accomplish this by offering full-line solutions, technical intelligence, supply chain expertise and an unmatched global distribution network.

[anixter.com/asiapacific](http://anixter.com/asiapacific)

